



15 JUN 2023

AD ELEV 539  
36 04 04S 146 57 29E

AERODROME CHART - Page 2  
**ALBURY, NSW (YMAY)**

AWIS 134.525	ATIS 115.6 133.85	TWR 123.25	SMC 121.8	CTAF+AFRU (AH) 123.25	FIA (AH) ML CEN 125.2	AFRU+PAL (AH) 123.25	Bearings are Magnetic Elevations in FEET AMSL
<b>RWY</b>	<b>AERODROME LIGHTING</b>						
	ABN : OCC W 6 SEC TAXIWAYS : BLUE EDGE ON TWY A,B,C,E, F AND J. BLUE REFLECTIVE EDGE ON TWY D. RL : AFRU+PAL 123.25 , SDBY (1 SEC DURING LVP , UPTO 15 SEC OT) PTBL IN EMERG						
<b>07</b> <sup>069</sup>	PAPI RIGHT SIDE 3.0° 51.6FT MIRL RTIL						
<sup>249</sup> <b>25</b>	PAPI LEFT SIDE 3.0° 51.4FT MIRL RTIL						

**NOTES**

1. PAPI RWY 25 NOT TO BE USED BEYOND 3NM FROM AD WHEN R368 ACT SFC-2200.
2. AWIS REQUIRES 1 SEC PULSE TO ACTIVATE.



## DME or GNSS ARRIVAL PROCEDURES ALBURY, NSW (YMAY) Page 2

30 NOV 2023

AWIS 134.525	ATIS 115.6 133.85	TWR 123.25	SMC 121.8	CTAF+AFRU (AH) 123.25	FIA (AH) ML CEN 125.2	AFRU+PAL (AH) 123.25	Bearings are Magnetic Elevations in FEET AMSL
-----------------	----------------------	---------------	--------------	--------------------------	--------------------------	-------------------------	--

25 NM MSA  
3400  
AY VOR of YMAY ARP  
R-025°  
R-225°  
5400

**DME USING AY DME  
REFERENCE WAYPOINT AY VOR**

AY VOR/DME 115.6

10 NM MSA 4200

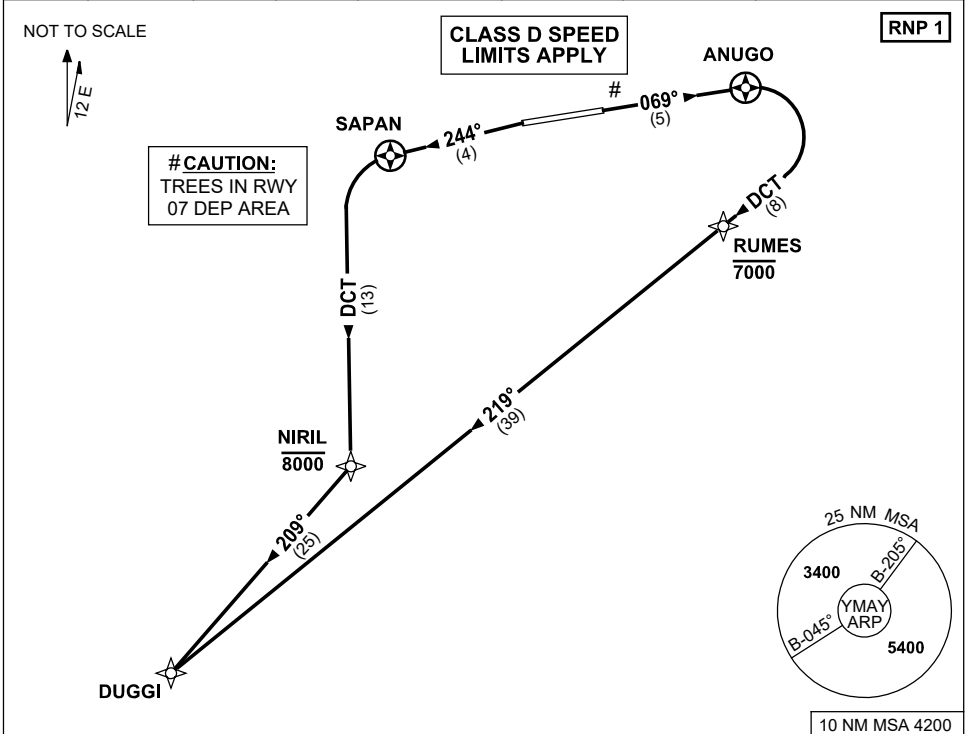
AD ELEV 539

<p><b>SECTOR D</b></p> <p>180° AY VOR 063°</p>	<p>VOR 3400 3260 2500 2300 MDA MAPt 239° 3400 3°</p>	<p><b>MISSED APPROACH:</b></p> <p>TURN AS APPROPRIATE, TRACK 239°. CLIMB TO 3400FT.</p> <p><b>NOTE:</b> PROC NOT AVBL WHEN R368 ACT UNLESS ADVISED BY ATC.</p>
NM TO AY VOR/DME	25    15    8    5    2    0	
<b>CIRCLING MINIMA</b>	<b>A,B: 2130-2.4    C: 2220-4.0    D: 2270-5.0</b>	
NM TO AY VOR/DME	5.5    5    4    3    2    1.9    1.7    1.5	
ALT (3° APCH PATH)	3400    3260    2940    2620    2300    2270    2220    2130	

**STANDARD INSTRUMENT DEPARTURES (SID)  
DUGGI ONE DEPARTURE (RNAV)  
ALBURY, NSW (YMAY)**

**30 NOV 2023**

AWIS 134.525	ATIS 115.6 133.85	TWR 123.25	SMC 121.8	CTAF+AFRU (AH) 123.25	FIA (AH) ML CEN 125.2	AFRU+PAL (AH) 123.25	Bearings are Magnetic Elevations in FEET AMSL
-----------------	----------------------	---------------	--------------	--------------------------	--------------------------	-------------------------	--



**DUGGI ONE DEPARTURE**

**RWY 07**

- GRAD 5.6% TO 2600ft THEN 3.3%
- Track 069° to ANUGO
- Turn RIGHT, track DCT to RUMES  
**Cross** RUMES AT or BLW 7000ft
- Track 219° to DUGGI

**NOTE:** PROC NOT AVBL WHEN R368 ACT UNLESS ADVISED BY ATC.

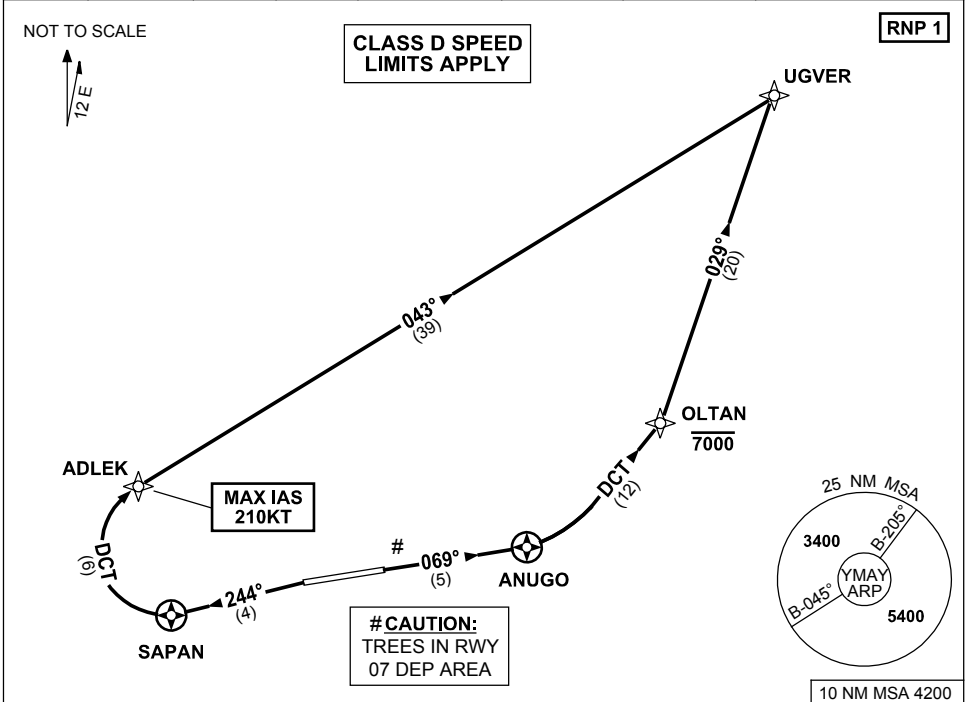
**RWY 25**

- GRAD 4.8% TO 1400ft THEN 3.3% (5.0% TO 2500ft)
- NOT BEFORE DER turn LEFT, track 244° to SAPAN
- Turn LEFT, track DCT to NIRIL  
**Cross** NIRIL AT or BLW 8000ft
- Turn RIGHT, track 209° to DUGGI

STANDARD INSTRUMENT DEPARTURES (SID)  
 UGVER ONE DEPARTURE (RNAV)  
**ALBURY, NSW (YMAY)**

30 NOV 2023

AWIS 134.525	ATIS 115.6 133.85	TWR 123.25	SMC 121.8	CTAF+AFRU (AH) 123.25	FIA (AH) ML CEN 125.2	AFRU+PAL (AH) 123.25	Bearings are Magnetic Elevations in FEET AMSL
-----------------	----------------------	---------------	--------------	--------------------------	--------------------------	-------------------------	--



**UGVER ONE DEPARTURE**

**RWY 07**

- GRAD 4.8% TO 1700ft THEN 3.3%
- Track 069° to ANUGO
- Turn LEFT, track DCT to OLTAN  
**Cross** OLTAN AT or BLW 7000ft
- Track 029° to UGVER

**RWY 25**

- GRAD 4.8% TO 1900ft THEN 3.3% (5.0% TO 2500ft)
- NOT BEFORE DER turn LEFT, track 244° to SAPAN
- Turn RIGHT, track DCT to ADLEK  
**MAX IAS** 210KT to ADLEK
- Track 043° to UGVER

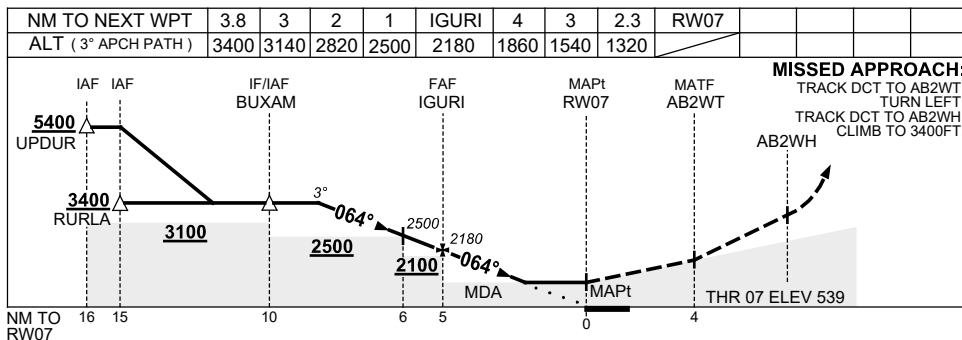
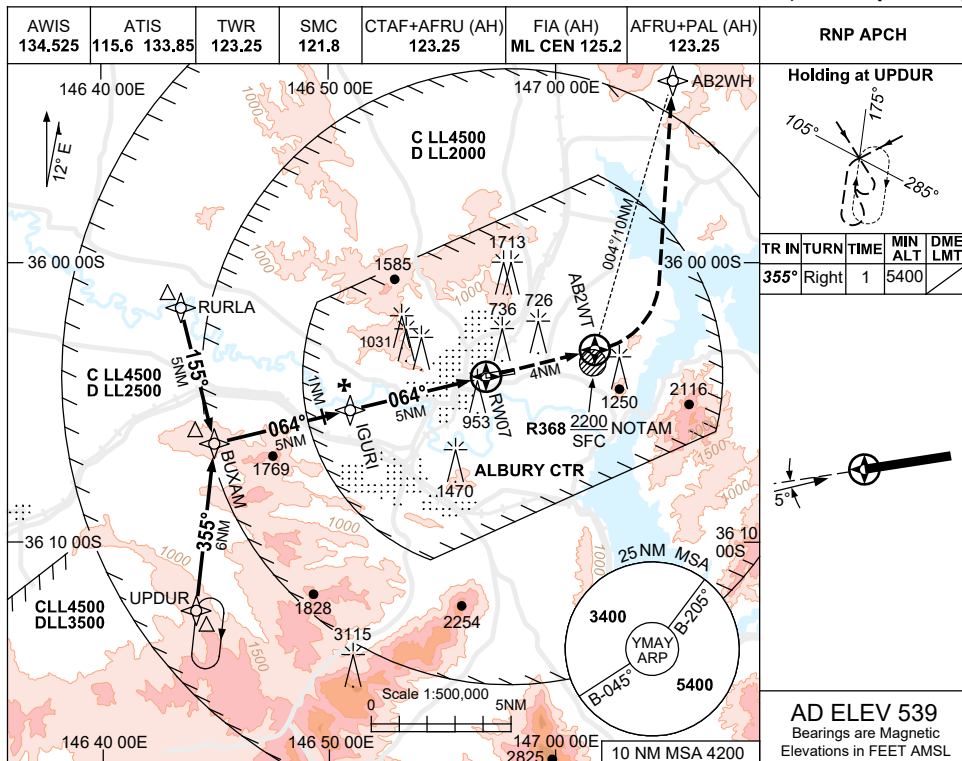
**NOTE:** PROC NOT AVBL WHEN R368 ACT UNLESS ADVISED BY ATC.

USE QNH

RNP Z RWY 07

ALBURY, NSW (YMAJ)

30 NOV 2023



**NOTES**

CATEGORY	A	B	C	D
LNAV	<b>1320 (781-4.5)</b>			
CIRCLING	<b>2050 (1511-2.4)</b>		<b>2220 (1681-4.0)</b>	<b>2270 (1731-5.0)</b>
ALTERNATE	(2011-4.4)		(2181-6.0)	(2231-7.0)

1. MAX IAS:  
INITIAL : 210KT.
2. **COLOUR:** SEE  
SPEC NOTICES.
3. PROC NOT AVBL  
WHEN **R368** ACT  
UNLESS ADVISED  
BY ATC.

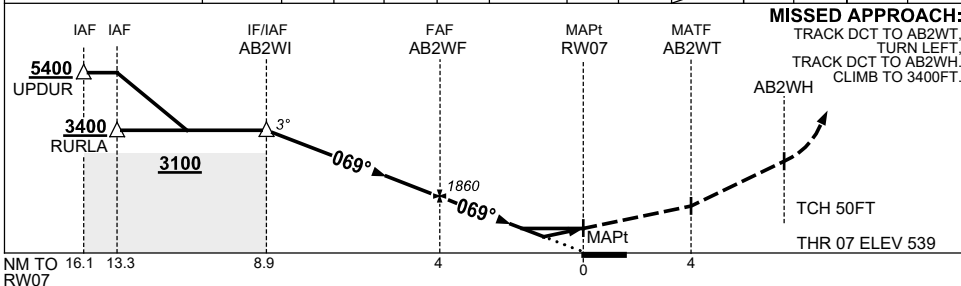
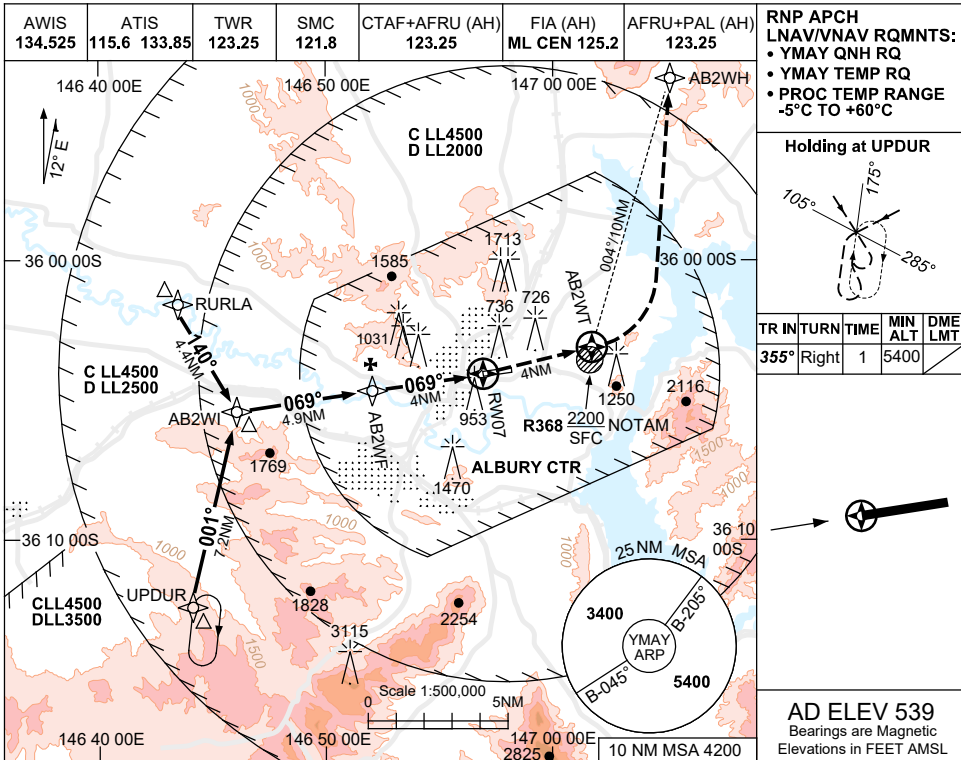
Changes: LNAV MINIMA, CIRCLING & ALTERNATE CAT C MINIMA, DIST-ALT TABLE, NEW LOGO.

MAYGN02-177

USE QNH RNP Y RWY 07 (LNAV/VNAV ONLY)

**ALBURY, NSW (YMAY)**

30 NOV 2023



**NOTES**

- MAX IAS: INITIAL : 210KT.
- COLOUR: SEE SPEC NOTICES.
- CIRCLING NOT AVBL WHEN R368 ACT.

CATEGORY	A	B	C	D
LNAV/VNAV		1220 (681-3.9)		
CIRCLING	2050 (1511-2.4)		2220(1681-4.0)	2270(1731-5.0)
ALTERNATE	(2011-4.4)		(2181-6.0)	(2231-7.0)

Changes: CIRCLING & ALTERNATE CAT C MINIMA, NEW LOGO.

MAYGN03-177

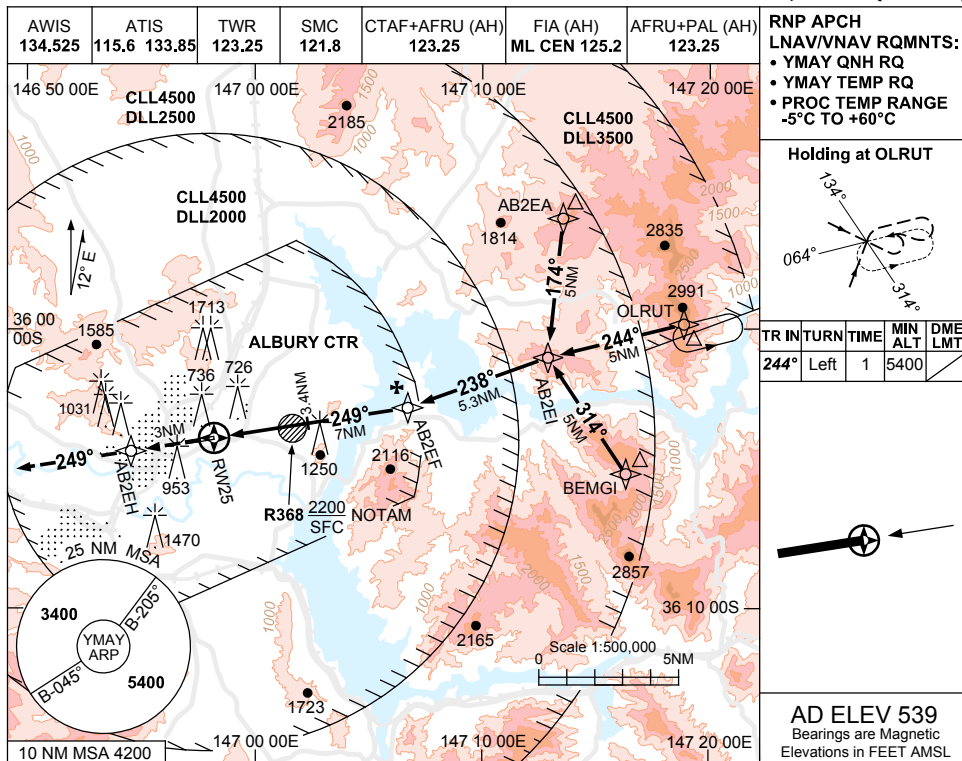


USE QNH

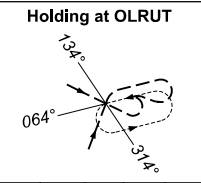
RNP RWY 25

ALBURY, NSW (YMAY)

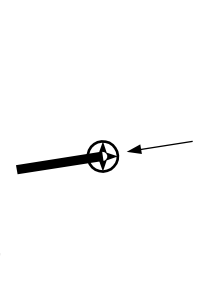
30 NOV 2023



RNP APCH  
LNAV/VNAV RQMNTS:  
• YMAY QNH RQ  
• YMAY TEMP RQ  
• PROC TEMP RANGE  
-5°C TO +60°C

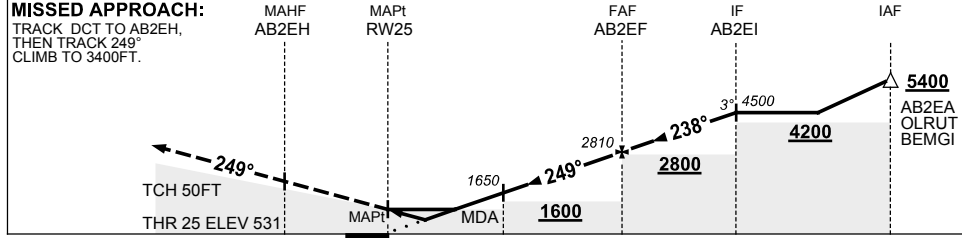


TR IN	TURN	TIME	MIN ALT	DME LMT
244°	Left	1	5400	



AD ELEV 539  
Bearings are Magnetic  
Elevations in FEET AMSL

NM TO NEXT WPT	RW25	1.6	2.2	3	3.4	4	5	6	AB2EF	1	2	3	4	AB2EI
ALT (3° APCH PATH)		1090	1270	1540	1650	1850	2170	2490	2810	3130	3450	3770	4080	4500



- NOTES**
- MAX IAS:  
INITIAL : 210KT.
  - COLOUR:** SEE SPEC NOTICES.
  - HLDG NOT CONTAINED IN CTA.
  - PROC NOT AVBL WHEN R368 ACT UNLESS ADVISED BY ATC.

CATEGORY	A	B	C	D
LNAV/VNAV		1090 (559-3.2)		
LNAV		1270 (739-4.2)		
CIRCLING	2050 (1511-2.4)	2220 (1681-4.0)		2270 (1731-5.0)
ALTERNATE	(2011-4.4)		(2181-6.0)	(2231-7.0)

Changes: CIRCLING & ALTERNATE CAT C MINIMA, Editorial.

MAYGN04-177

**STANDARD INSTRUMENT ARRIVAL (STAR)  
VEGRU ONE ARRIVAL (RNAV)  
ALBURY, NSW (YMAJ)**

**23 MAR 2023**

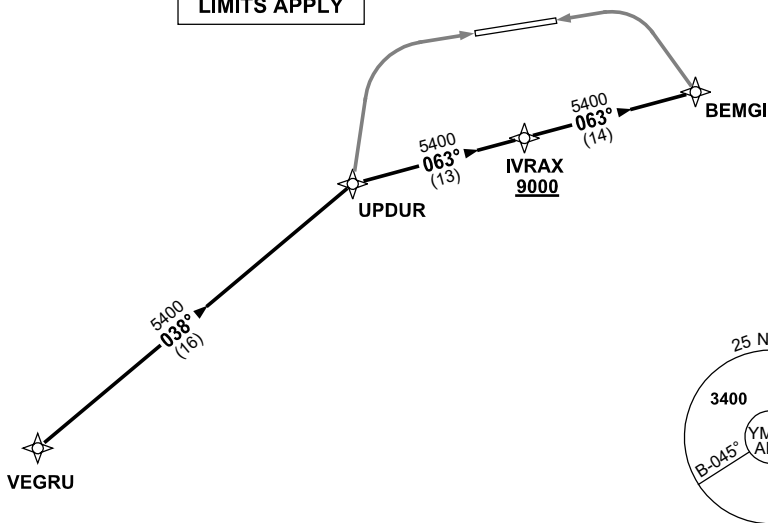
AWIS 134.525	ATIS 115.6 133.85	TWR 123.25	SMC 121.8	CTAF+AFRU (AH) 123.25	FIA (AH) ML CEN 125.2	AFRU+PAL (AH) 123.25	Bearings are Magnetic Elevations in FEET AMSL
-----------------	----------------------	---------------	--------------	--------------------------	--------------------------	-------------------------	--

NOT TO SCALE



**CLASS D SPEED  
LIMITS APPLY**

**RNP 1**



10 NM MSA 4200

**ARRIVAL: VEGRU ONE**

- From VEGRU track 038° to UPDUR

**RWY 07:**

- Track via RNP Z RWY 07 or RNP Y RWY 07 (LNAV/VNAV ONLY)

**NOTE:** PROC NOT AVBL WHEN R368 ACT UNLESS ADVISED BY ATC.

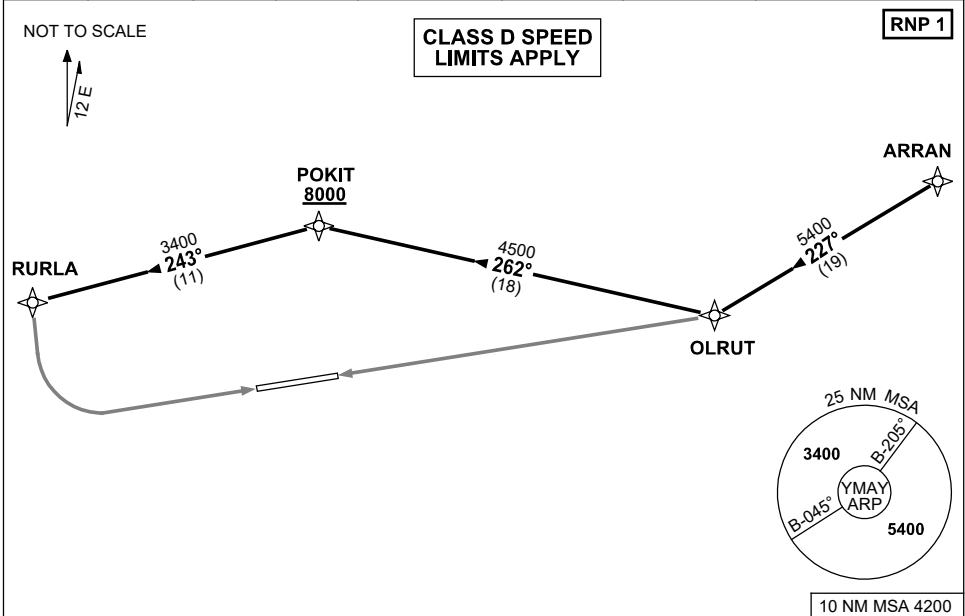
**RWY 25:**

- Track 063° to IVRAX  
    **Cross** IVRAX AT or ABV 9000ft
- Track 063° to BEMGI
- Track via RNP RWY 25

**STANDARD INSTRUMENT ARRIVAL (STAR)  
ARRAN ONE ARRIVAL (RNAV)  
ALBURY, NSW (YMAY)**

**23 MAR 2023**

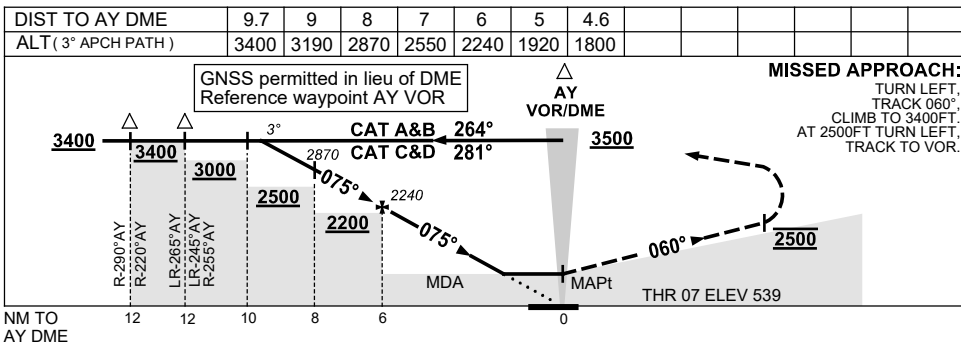
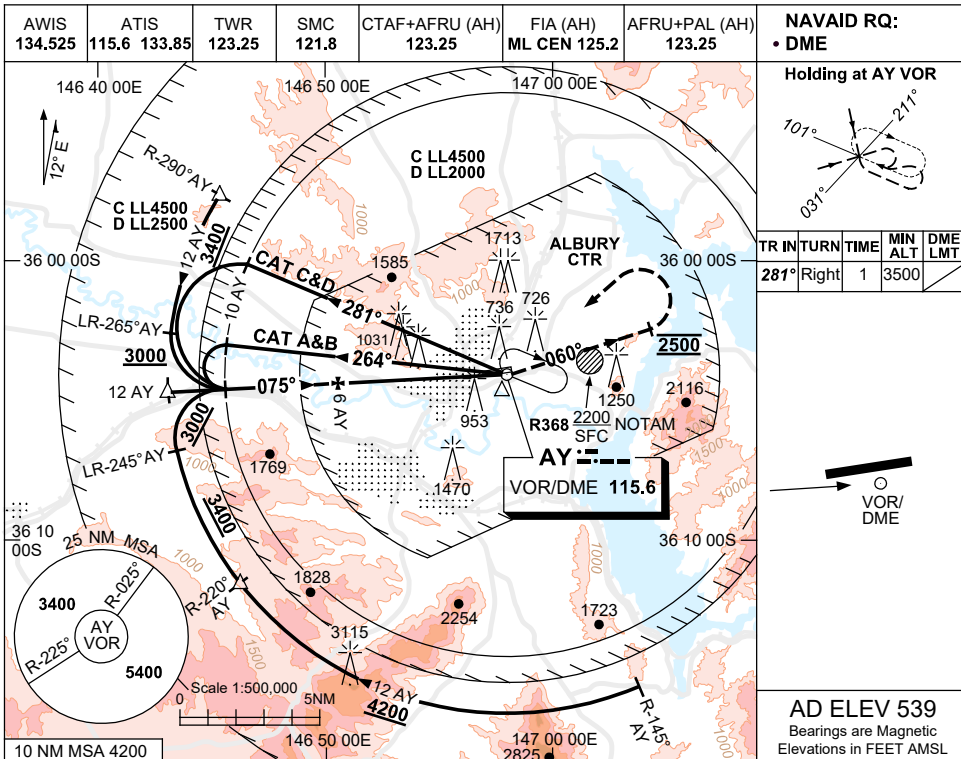
AWIS 134.525	ATIS 115.6 133.85	TWR 123.25	SMC 121.8	CTAF+AFRU (AH) 123.25	FIA (AH) ML CEN 125.2	AFRU+PAL (AH) 123.25	Bearings are Magnetic Elevations in FEET AMSL
-----------------	----------------------	---------------	--------------	--------------------------	--------------------------	-------------------------	--



USE QNH

VOR RWY 07  
**ALBURY, NSW (YMAV)**

30 NOV 2023



**NOTES**

CATEGORY	A	B	C	D
S-I VOR/DME	<b>1800 (1261-5.0)</b>			
CIRCLING	<b>2050 (1511-2.4)</b>	<b>2220 (1681-4.0)</b>	<b>2270 (1731-5.0)</b>	
ALTERNATE	(2011-4.4)	(2181-6.0)	(2231-7.0)	

1. COLOUR: SEE SPEC NOTICES.
2. CIRCLING NOT AVBL WHEN R368 ACT.

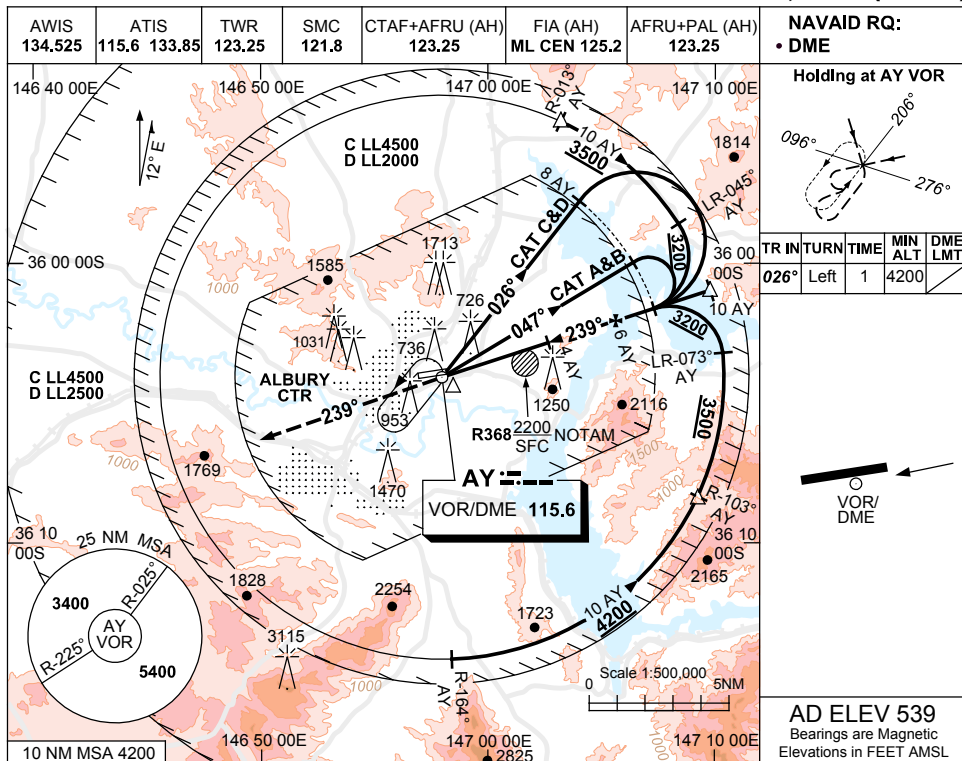
Changes: CIRCLING & ALTERNATE CAT C MINIMA, NEW LOGO.

MAYV001-177

USE QNH

VOR RWY 25  
**ALBURY, NSW (YMAJ)**

30 NOV 2023



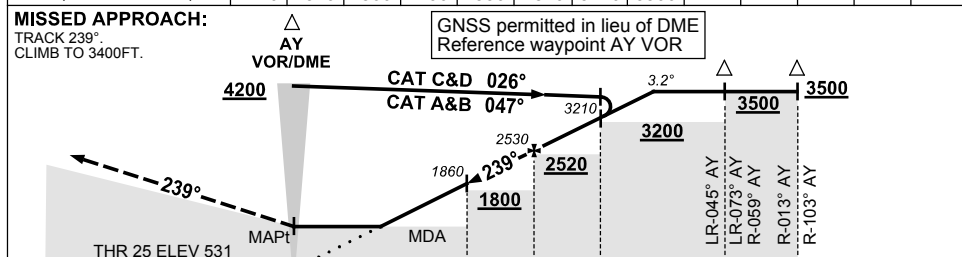
**NAVAID RQ:**  
 • DME

**Holding at AY VOR**

TR IN	TURN	TIME	MIN ALT	DME LMT
026°	Left	1	4200	

**AD ELEV 539**  
 Bearings are Magnetic  
 Elevations in FEET AMSL

DIST TO AY DME	2.3	3	4	5	6	7	8	8.9				
ALT (3.2° APCH PATH)	1270	1520	1860	2190	2530	2870	3210	3500				



NR TO AY DME

CATEGORY	A	B	C	D
S-I VOR/DME	1270 (739-4.2)			
CIRCLING	2050 (1511-2.4)	2220 (1681-4.0)	2270 (1731-5.0)	
ALTERNATE	(2011-4.4)		(2181-6.0)	(2231-7.0)

**NOTES**

- MAX IAS: BASETURN  
CAT C&D : 200KT.
- APCH PATH ANGLE DOES NOT COINCIDE WITH PAPI ON GLIDE SLOPE INDICATION.
- COLOUR: SEE SPEC NOTICES.
- PROC NOT AVBL WHEN R368 ACT UNLESS ADVISED BY ATC.

Changes: CIRCLING & ALTERNATE CAT C MINIMA, NEW LOGO.

MAYVO02-177

