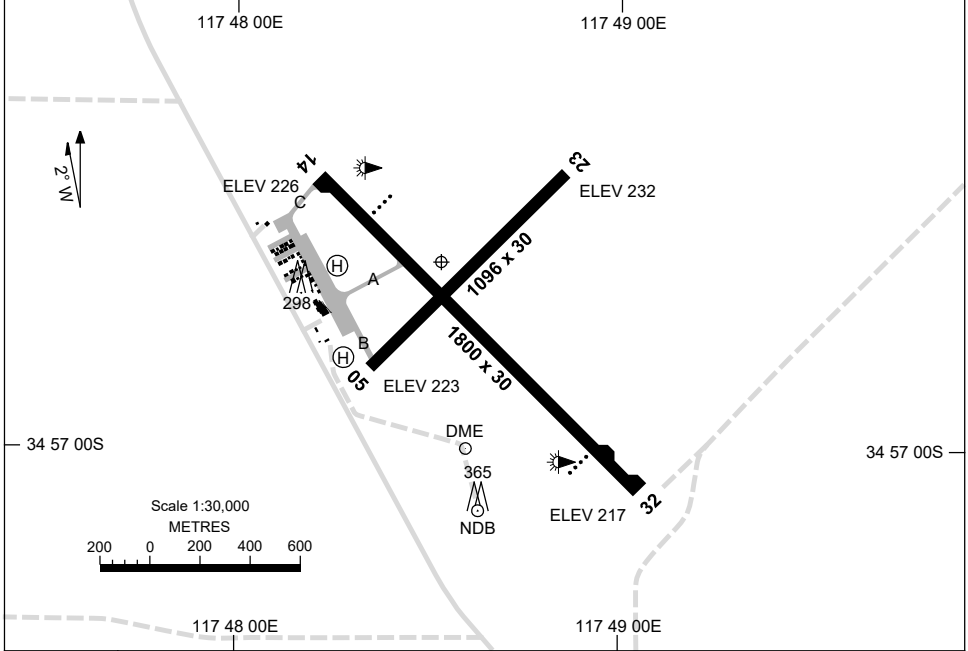


15 JUN 2023

AD ELEV 233
34 56 36S 117 48 32E

AERODROME CHART
ALBANY, WA (YABA)

AWIS * 122.125	FIA ML CEN 123.9	CTAF+AFRU 127.85	AFRU+PAL 127.85	Bearings are Magnetic Elevations in FEET AMSL
-------------------	---------------------	---------------------	--------------------	--



RWY	AERODROME LIGHTING	
		TAXIWAY : TWY A AND B BLUE EDGE RL : AFRU+PAL 127.85 , SDBY (15 SEC) , PTBL (PN 08 6820 3711)
14 ¹³⁷ ₃₁₇ 32	PAPI 3.0° 53FT LIRL PAPI 3.0° 49FT LIRL	
05 ⁰⁴⁷ ₂₂₇ 23	NIL NIL	

NOTES

* 1. AWIS REQUIRES ONE-SECOND PULSE TO ACTIVATE.

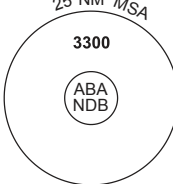
Changes: NOTES.

ABAAD01-175

DME or GNSS ARRIVAL PROCEDURES ALBANY, WA (YABA)


15 AUG 2019

AWIS 122.125	FIA ML CEN 123.9	CTAF+AFRU 127.85	AFRU+PAL 127.85		Bearings are Magnetic Elevations in FEET AMSL
-----------------	---------------------	---------------------	--------------------	--	--



25 NM MSA
3300
ABA NDB

**DME USING ABA DME
REFERENCE WAYPOINT ABA NDB**



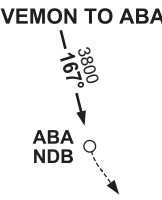
* NO CIRCLING

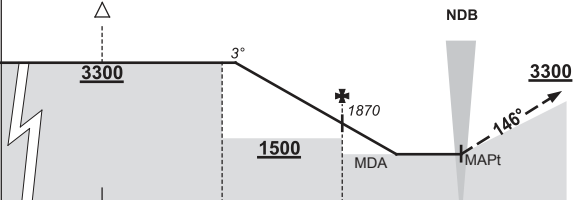
ABA	DME	NDB	240
		DME	109.7

* NO CIRCLING IN SECTOR E OF RWY 14/32 AND S OF RWY 05/23.

10 NM MSA 2100	AD ELEV 233
----------------	-------------

VEMON TO ABA

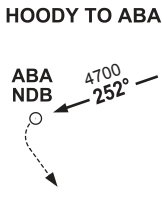


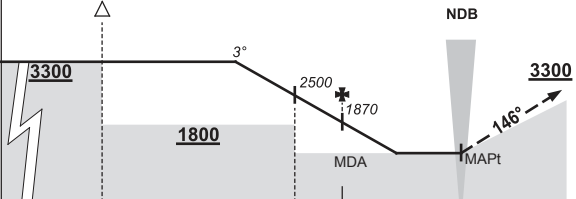


MISSED APPROACH:
TURN LEFT,
TRACK 146°.
CLIMB TO 3300FT.

NM TO ABA NDB	25	15	10	5	0									
CIRCLING MINIMA					A,B: 1120-2.4	C: 1170-4.0	D: 1290-5.0							
NM TO ABA NDB	9.5	9	8	7	6	5	4	3.2	3	2.7				
ALT (3° APCH PATH)	3300	3140	2820	2500	2190	1870	1550	1290	1230	1120				

HOODY TO ABA

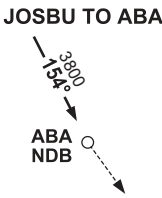


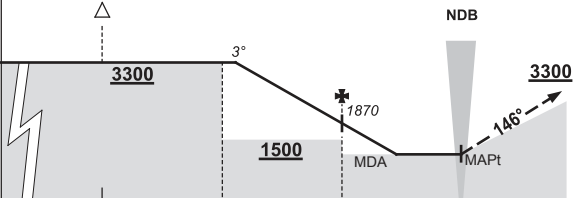


MISSED APPROACH:
TURN LEFT,
TRACK 146°.
CLIMB TO 3300FT.

NM TO ABA NDB	25	15	7	5	0									
CIRCLING MINIMA					A,B: 1120-2.4	C: 1170-4.0	D: 1290-5.0							
NM TO ABA NDB	9.5	9	8	7	6	5	4	3.2	3	2.8	2.7			
ALT (3° APCH PATH)	3300	3140	2820	2500	2190	1870	1550	1290	1230	1170	1120			

JOSBU TO ABA





MISSED APPROACH:
TURN LEFT,
TRACK 146°.
CLIMB TO 3300FT.

NM TO ABA NDB	25	15	10	5	0									
CIRCLING MINIMA					A,B: 1120-2.4	C: 1170-4.0	D: 1290-5.0							
NM TO ABA NDB	9.5	9	8	7	6	5	4	3.2	3	2.7				
ALT (3° APCH PATH)	3300	3140	2820	2500	2190	1870	1550	1290	1230	1120				

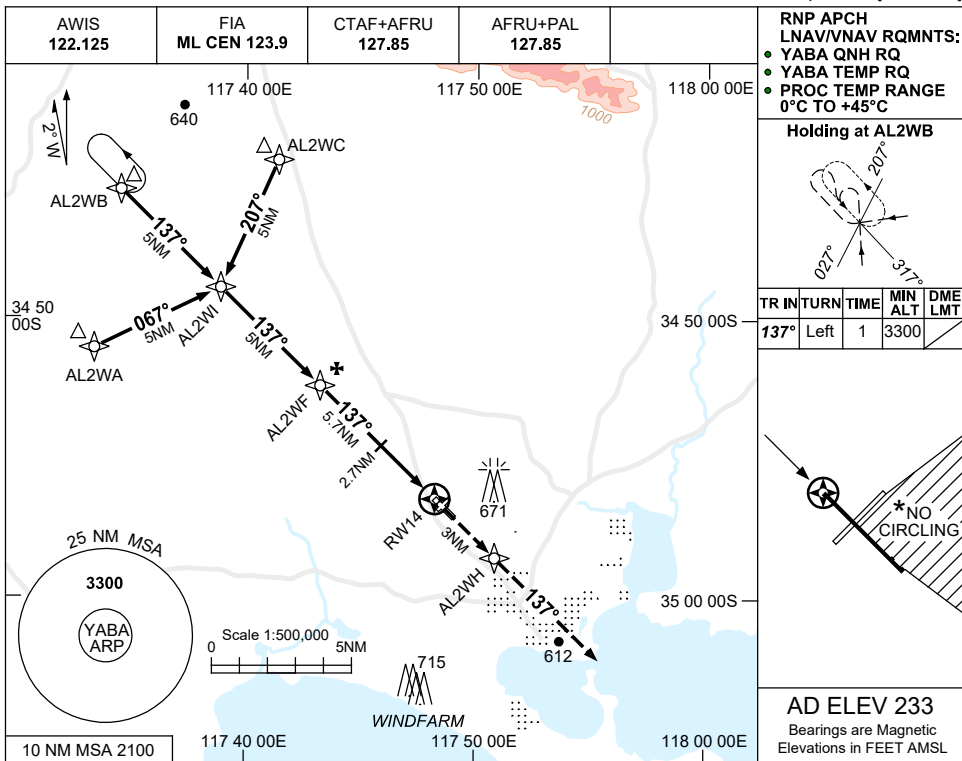
Changes: VEMON TRACK, Editorial.

ABADG01-160

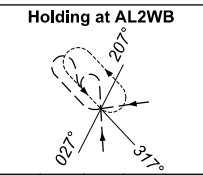
USE QNH

RNP RWY 14
ALBANY, WA (YABA)

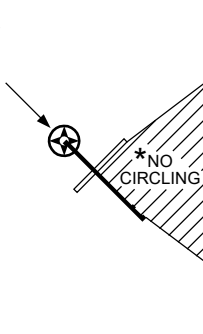
7 SEP 2023



RNP APCH
LNAV/VNAV RQMNTS:
● YABA QNH RQ
● YABA TEMP RQ
● PROC TEMP RANGE
0°C TO +45°C

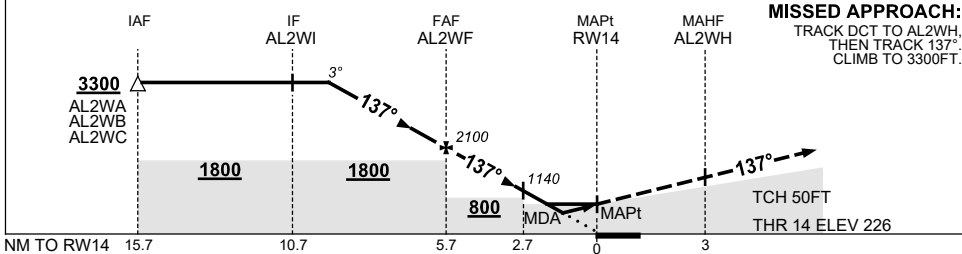


TR IN	TURN	TIME	MIN ALT	DME LMT
137°	Left	1	3300	



AD ELEV 233
Bearings are Magnetic
Elevations in FEET AMSL

NM TO NEXT WPT	3.8	3	2	1	AL2WF	4	3	2.7	2	1.4	0.8	RW14	
ALT (3° APCH PATH)	3300	3060	2740	2420	2100	1550	1230	1140	910	730	540		



MISSED APPROACH:
TRACK DCT TO AL2WH,
THEN TRACK 137°.
CLIMB TO 3300FT.

TCH 50FT
THR 14 ELEV 226

NOTES

- MAX IAS:
HOLDING : 210KT.
INITIAL : 210KT.
- NO CIRCLING IN
SECTOR EAST OF
RWY 14/32 & SOUTH
OF RWY 05/23.
- COLOUR: SEE
SPEC NOTICES.

CATEGORY	A	B	C	D
LNAV/VNAV	540 (314-1.7)			
LNAV	730 (504-2.9)			
CIRCLING *	1120 (887-2.4)	1170 (937-4.0)	1290 (1057-5.0)	
ALTERNATE	(1387-4.4)	(1437-6.0)	(1557-7.0)	

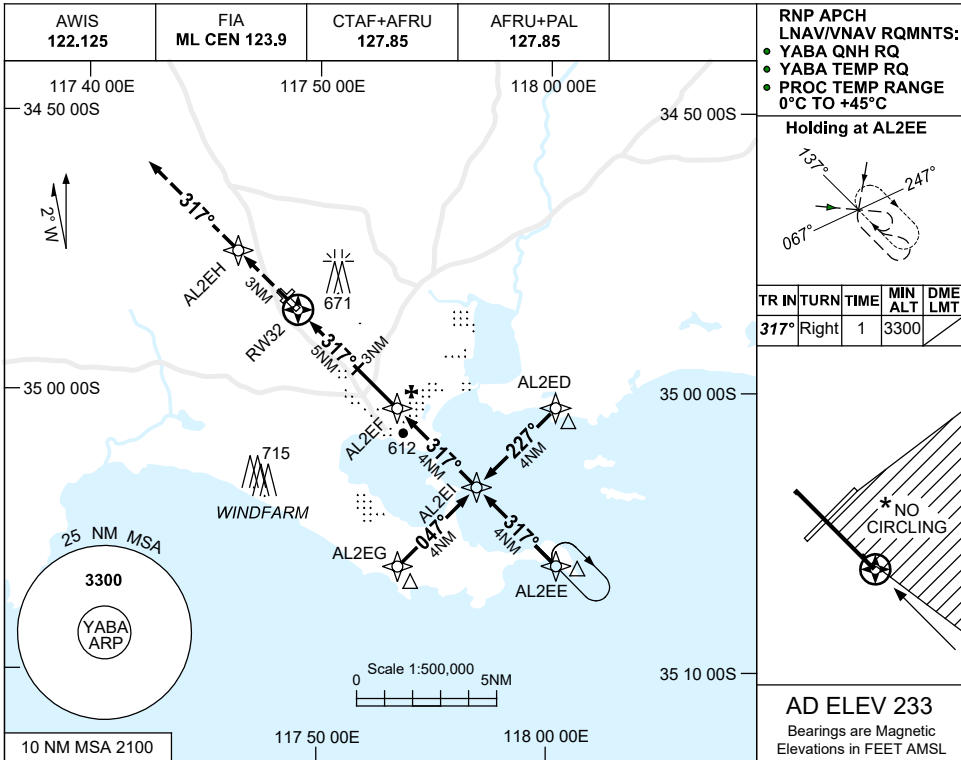
Changes: CHART TITLE, PBN SPECIFICATION BOX, Editorial.

ABAGN01-176

USE QNH

RNP RWY 32
ALBANY, WA (YABA)

7 SEP 2023



RNP APCH LNAV/VNAV RQMNTS:

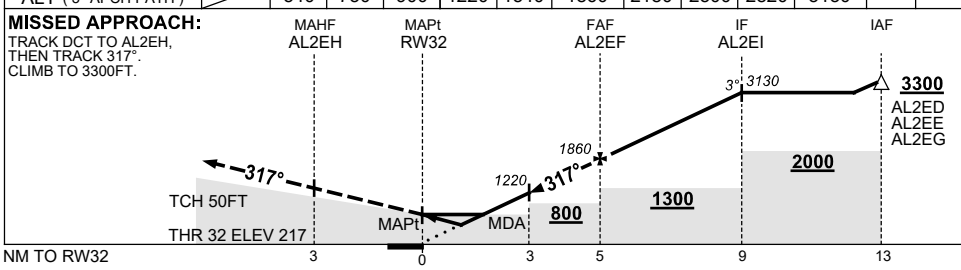
- YABA QNH RQ
- YABA TEMP RQ
- PROC TEMP RANGE 0°C TO +45°C

Holding at AL2EE

TR IN	TURN	TIME	MIN ALT	DME LMT
317°	Right	1	3300	

AD ELEV 233
Bearings are Magnetic
Elevations in FEET AMSL

NM TO NEXT WPT	RW32	0.9	1.5	2	3	4	AL2EF	1	2	3	AL2EI		
ALT (3° APCH PATH)		540	730	900	1220	1540	1860	2180	2500	2820	3130		



NOTES

1. MAX IAS:
HOLDING: 210KT.
INITIAL : 210KT.
- *2. NO CIRCLING IN SECTOR EAST OF RWY 14/32 & SOUTH OF RWY 05/23.
3. COLOUR: SEE SPEC NOTICES.

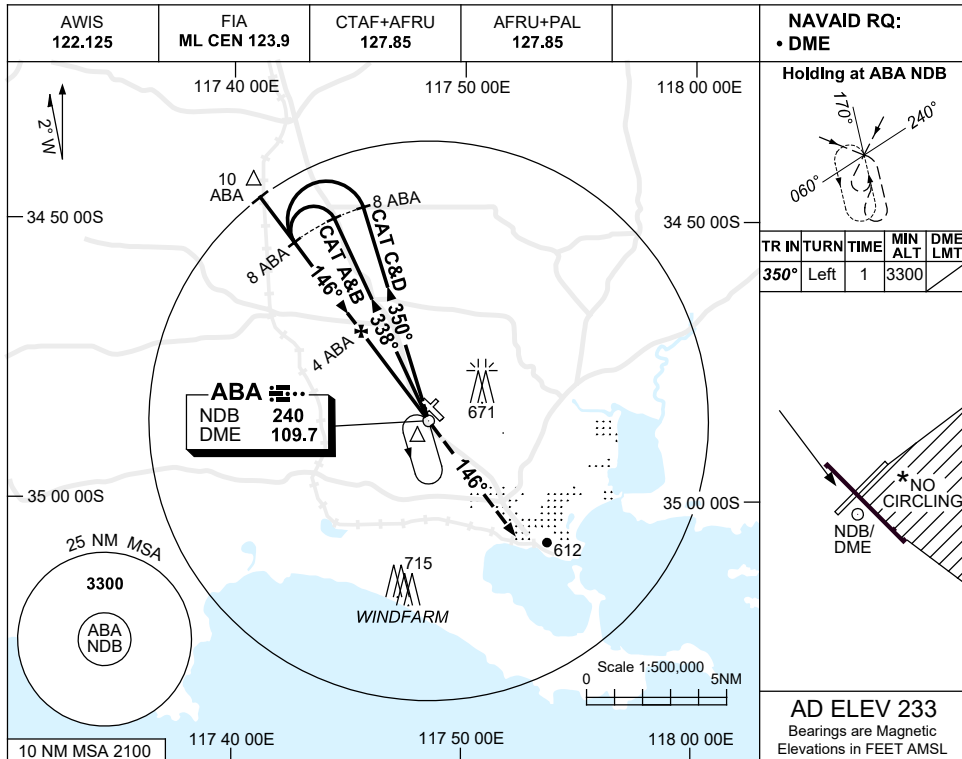
CATEGORY	A	B	C	D
LNAV/VNAV	540 (323-1.8)			
LNAV	730 (513-2.9)			
CIRCLING *	1120 (887-2.4)	1170 (937-4.0)	1290 (1057-5.0)	
ALTERNATE	(1387-4.4)		(1437-6.0)	(1557-7.0)

Changes: CHART TITLE, PBN SPECIFICATION BOX, Editorial. ABAGN02-176

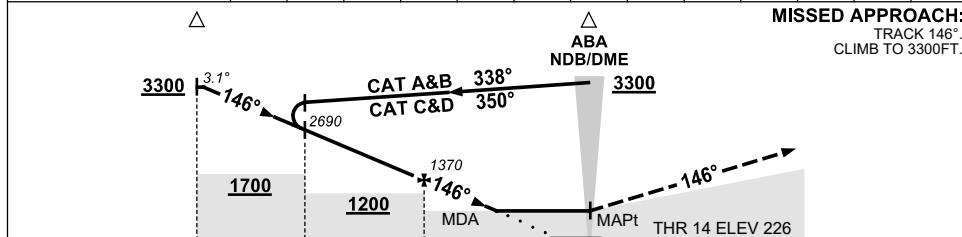
USE QNH

NDB-Y RWY 14
ALBANY, WA (YABA)

7 NOV 2019



DIST TO ABA DME	9.8	9	8	7	6	5	4	3	2.4				
ALT (3.1° APCH PATH)	3300	3020	2690	2360	2030	1700	1370	1040	850				



NOTES

- MAX IAS:
INITIAL : 210KT.
- * NO CIRCLING IN SECTOR EAST OF RWY 14/32 & SOUTH OF RWY 05/23.
- APCH PATH ANGLE DOES NOT COINCIDE WITH PAPI ON GLIDE SLOPE INDICATION.
- COLOUR: SEE SPEC NOTICES.

CATEGORY	A	B	C	D
S-I NDB/DME	850 (617-3.5)			
CIRCLING *	1120 (887-2.4)	1170 (937-4.0)	1290 (1057-5.0)	
ALTERNATE	(1387-4.4)	(1437-6.0)	(1557-7.0)	

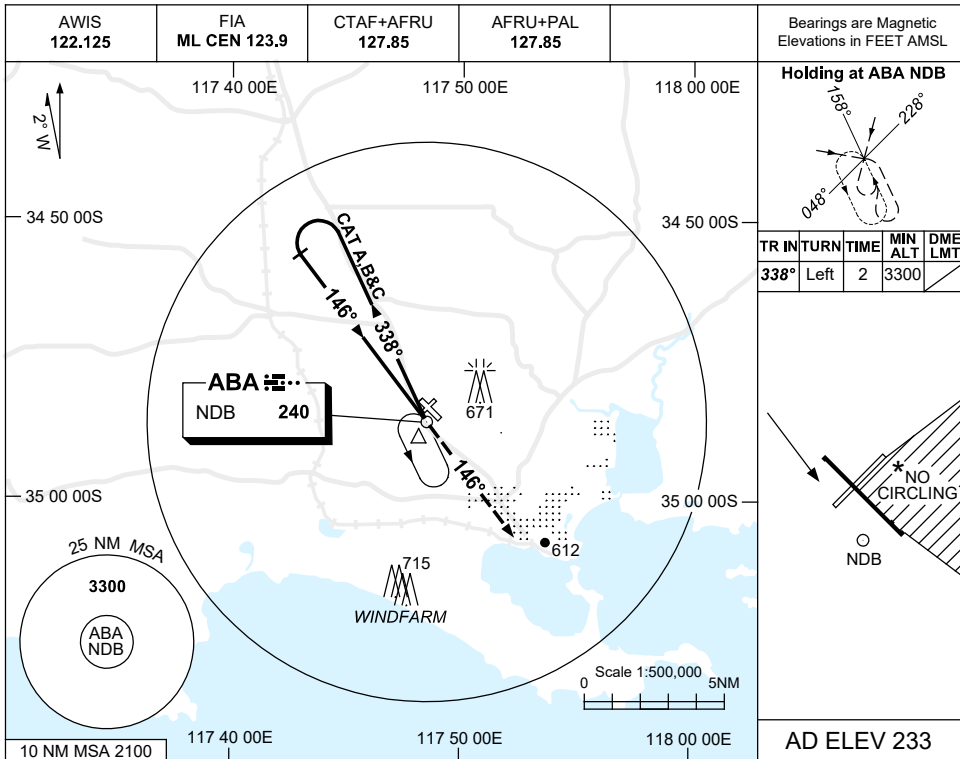
Changes: D136 & 500FT CONTOUR REMOVED.

ABANB01-161

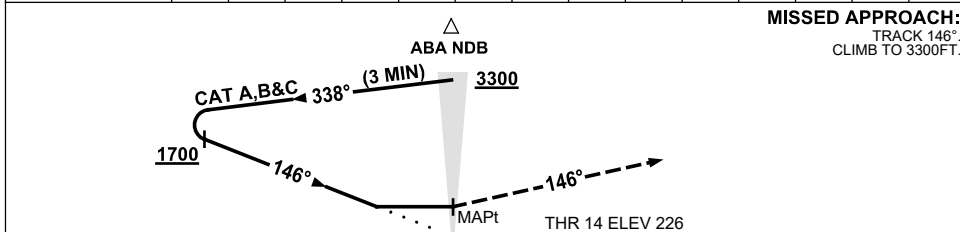
USE QNH

NDB-Z RWY 14
ALBANY, WA (YABA)

7 NOV 2019



DME DIST	NOT APPLICABLE									
ALT										



CATEGORY	A	B	C	D
S-I NDB	1120 (887-5.0)			NOT APPLICABLE
CIRCLING *	1120 (887-2.4)	1170 (937-4.0)		
ALTERNATE	(1387-4.4)	(1437-6.0)		

- NOTES**
- MAX IAS:
 INITIAL :
 CAT A&B 140KT.
 CAT C 210KT.
 - NO CIRCLING IN SECTOR EAST OF RWY 14/32 & SOUTH OF RWY 05/23.
 - COLOUR: SEE SPEC NOTICES.

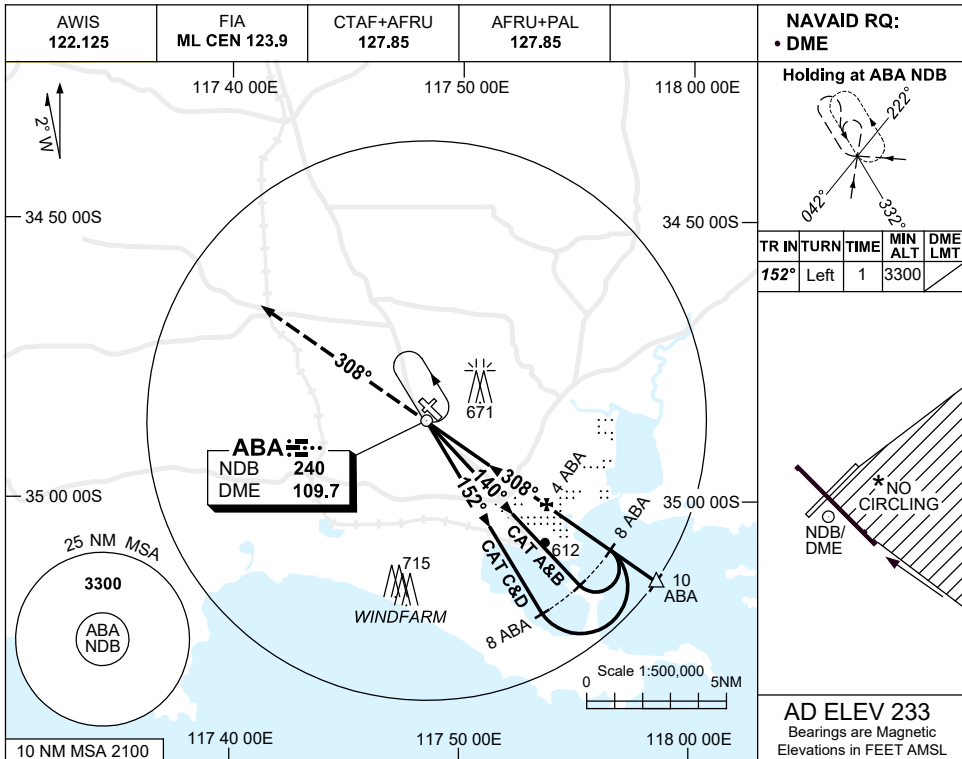
Changes: D136 & 500FT CONTOUR REMOVED.

ABANB02-161

USE QNH

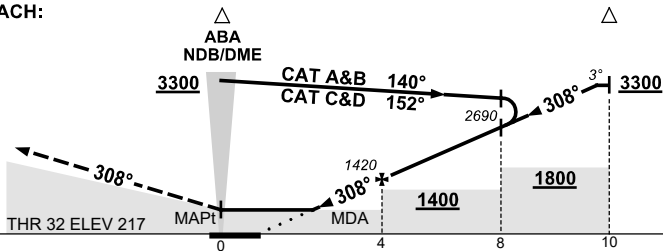
NDB RWY 32
ALBANY, WA (YABA)

7 NOV 2019



DIST TO ABA DME	2	3	4	5	6	7	8	9	9.9				
ALT (3° APCH PATH)	780	1100	1420	1740	2060	2370	2690	3010	3300				

MISSED APPROACH:
TRACK 308°
CLIMB TO 3300FT.



NM TO ABA DME

NOTES

1. MAX IAS:
INITIAL :
CAT A&B 140KT.
CAT C 210KT.
- *2. NO CIRCLING IN SECTOR EAST OF RWY 14/32 & SOUTH OF RWY 05/23.
3. COLOUR: SEE SPEC NOTICES.

CATEGORY	A	B	C	D
S-I NDB/DME	780 (563-3.1)			
CIRCLING *	1120 (887-2.4)	1170 (937-4.0)	1290 (1057-5.0)	
ALTERNATE	(1387-4.4)	(1437-6.0)	(1557-7.0)	

Changes: D136 & 500FT CONTOUR REMOVED.

ABANB03-161