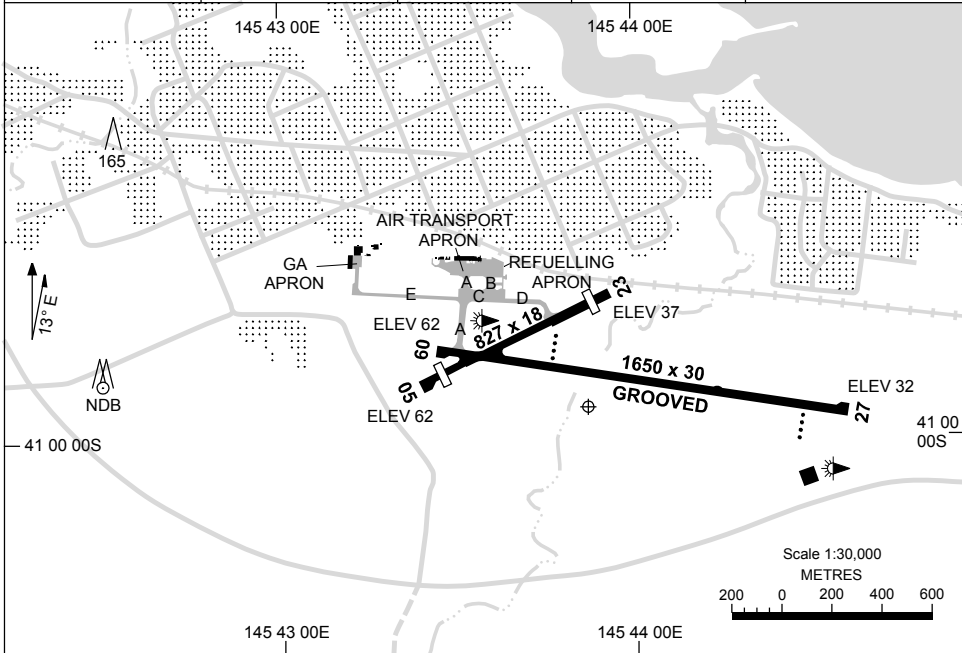


23 MAR 2023

AD ELEV 63  
40 59 56S 145 43 52E

**AERODROME CHART**  
**WYNYARD, TAS (YWYY)**

AWIS 133.35	FIA ML CEN 122.6	CTAF+AFRU 126.9	AFRU+PAL 126.9	Bearings are Magnetic Elevations in FEET AMSL
----------------	---------------------	--------------------	-------------------	--



AERODROME LIGHTING	
<b>RWY</b>	TAXIWAY : BLUE EDGE RL : AFRU+PAL 126.9, SDBY (6 SEC)
<b>09</b> <sup>086</sup> <b>27</b> <sup>266</sup>	PAPI 3.0° 41FT LIRL PAPI 3.0° 41FT LIRL
<b>05</b> <sup>051</sup> <b>23</b> <sup>231</sup>	NIL NIL

**NOTES**

1. AWIS REQUIRES 1 SEC PULSE TO ACTIVATE.

Changes: AD ELEV, RWY 09 THR ELEV, RWY 05 THR ELEV.

WYYAD01-174

**23 MAR 2023**

AWIS 133.35	FIA ML CEN 122.6	CTAF+AFRU 126.9	AFRU+PAL 126.9		Bearings are Magnetic Elevations in FEET AMSL
----------------	---------------------	--------------------	-------------------	--	--

**REFERENCE WAYPOINT WYY NDB**

\* NO CIRCLING SOUTH OF RWY 09/27 & RWY 05/23.

**AD ELEV 63**

**KII TO WYY**

**MISSED APPROACH:**  
TURN LEFT,  
TRACK 070°.  
CLIMB TO 3100FT.

NM TO WYY NDB	KII	15		9		5		0												
<b>CIRCLING MINIMA</b>					<b>A,B: 1180-2.4</b>		<b>C: 1270-4.0</b>		<b>D: N/A</b>											
NM TO WYY NDB	8.4	8	7	6	5	4	3	2.7												
ALT (3° APCH PATH)	3000	2870	2550	2230	1910	1600	1270	1180												

**IRSOM TO WYY**

**MISSED APPROACH:**  
TURN RIGHT,  
TRACK 340°.  
CLIMB TO 3100FT.

NM TO WYY NDB	DPO	15		9		5		0												
<b>CIRCLING MINIMA</b>					<b>A,B: 1180-2.4</b>		<b>C: 1270-4.0</b>		<b>D: N/A</b>											
NM TO WYY NDB	10.6	10	9	8	7	6	5	4	3	2.7										
ALT (3° APCH PATH)	3700	3500	3190	2870	2550	2230	1910	1600	1270	1180										

**SECTOR A**

**MISSED APPROACH:**  
TURN LEFT,  
TRACK 030°.  
CLIMB TO 3100FT.

NM TO WYY NDB	25	15		10		5		0												
<b>CIRCLING MINIMA</b>					<b>A,B: 1180-2.4</b>		<b>C: 1270-4.0</b>		<b>D: N/A</b>											
NM TO WYY NDB	8.4	8	7	6	5	4	3	2.7												
ALT (3° APCH PATH)	3000	2870	2550	2230	1910	1600	1270	1180												

Changes: AD ELEV.

WYYDG01-174

# GNSS ARRIVAL PROCEDURES WYNYARD, TAS (YWYY) Page 2

30 NOV 2023

AWIS 133.35	FIA ML CEN 122.6	CTAF+AFRU 126.9	AFRU+PAL 126.9		Bearings are Magnetic Elevations in FEET AMSL
----------------	---------------------	--------------------	-------------------	--	--

25 NM MSA

3100

WYY NDB

B-080° B-265°

5600

**REFERENCE WAYPOINT WYY NDB**

WYY NDB 302

\* NO CIRCLING

10 NM MSA 3100

\* NO CIRCLING SOUTH OF  
RWY 09/27 & RWY 05/23.

AD ELEV 63

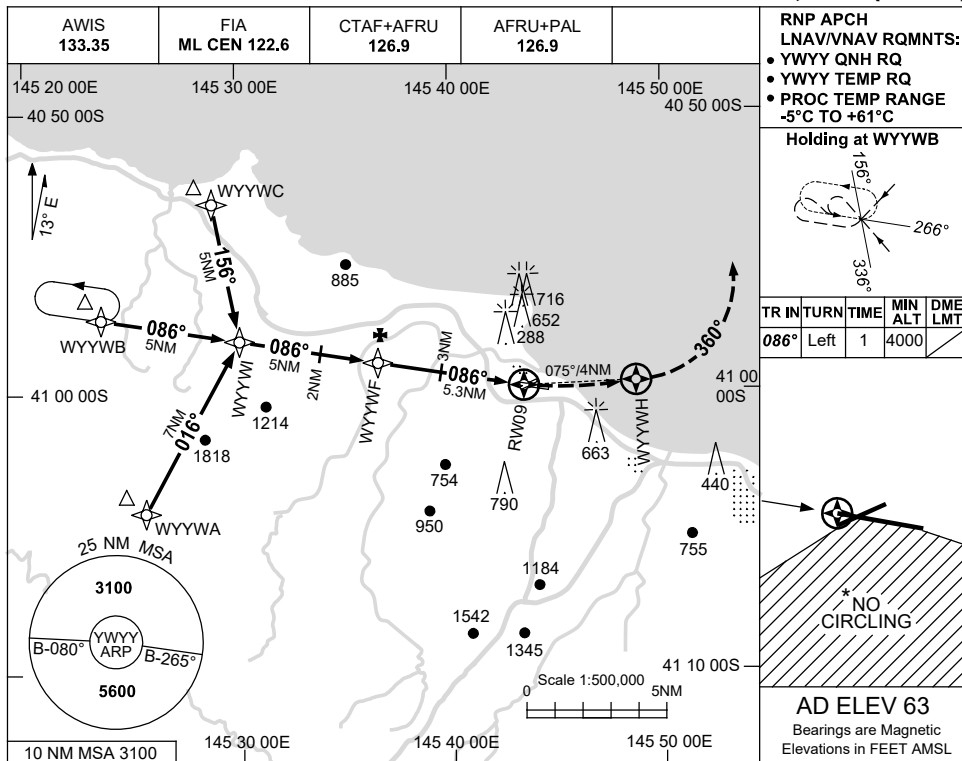
<p><b>MIKIS TO WYY NDB</b></p> <p>WYY NDB</p> <p>311°</p> <p>3300</p>	<p>NDB</p> <p>5600</p> <p>4100</p> <p>2700</p> <p>1800</p> <p>2380</p> <p>3100</p> <p>MDA</p> <p>MAPt</p>	<p><b>MISSED APPROACH:</b></p> <p>TRACK 311°.</p> <p>CLIMB TO 3100FT.</p>
NM TO WYY NDB	32 17 15 12 6 5 4 0	
<b>CIRCLING MINIMA</b>	A,B: 1400-2.4 C: 1400-4.0 D: N/A	
NM TO WYY NDB	15.1 14 13 12 11 10 9 8 7 6 5 4 3 2 1.9	
ALT (3° APCH PATH)	5600 5240 4930 4610 4290 3970 3650 3340 3020 2700 2380 2060 1750 1430 1400	

USE QNH

RNP RWY 09

WYNYARD, TAS (WYWW)

15 JUN 2023

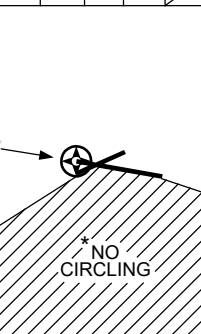


**RNP APCH LNAV/VNAV RQMNTS:**

- WYWW QNH RQ
- WYWW TEMP RQ
- PROC TEMP RANGE -5°C TO +61°C

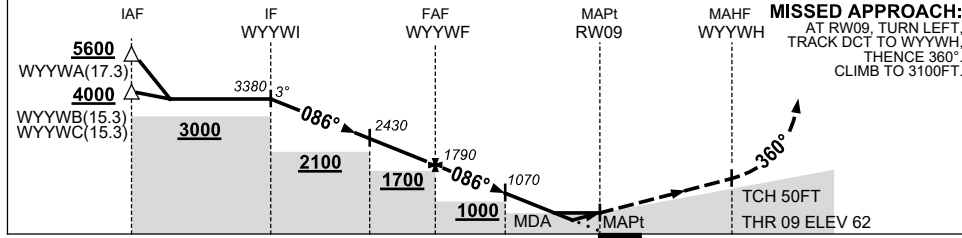
**Holding at WYWWB**

TR IN	TURN	TIME	MIN ALT	DME LMT
086°	Left	1	4000	



**AD ELEV 63**  
Bearings are Magnetic  
Elevations in FEET AMSL

NM TO NEXT WPT	WYWWI	4	3	2	1	WYWWF	4	3	2	1.9	1.3	RW09
ALT (3° APCH PATH)	3380	3060	2750	2430	2110	1790	1390	1070	750	730	530	



NOTES

CATEGORY	A	B	C	D
LNAV/VNAV		530 (468-2.6)		NOT APPLICABLE
LNAV		730 (667-3.8)		
CIRCLING *	1170 (1107-2.4)		1270(1207-4.0)	
ALTERNATE		(1607-4.4)	(1707-6.0)	

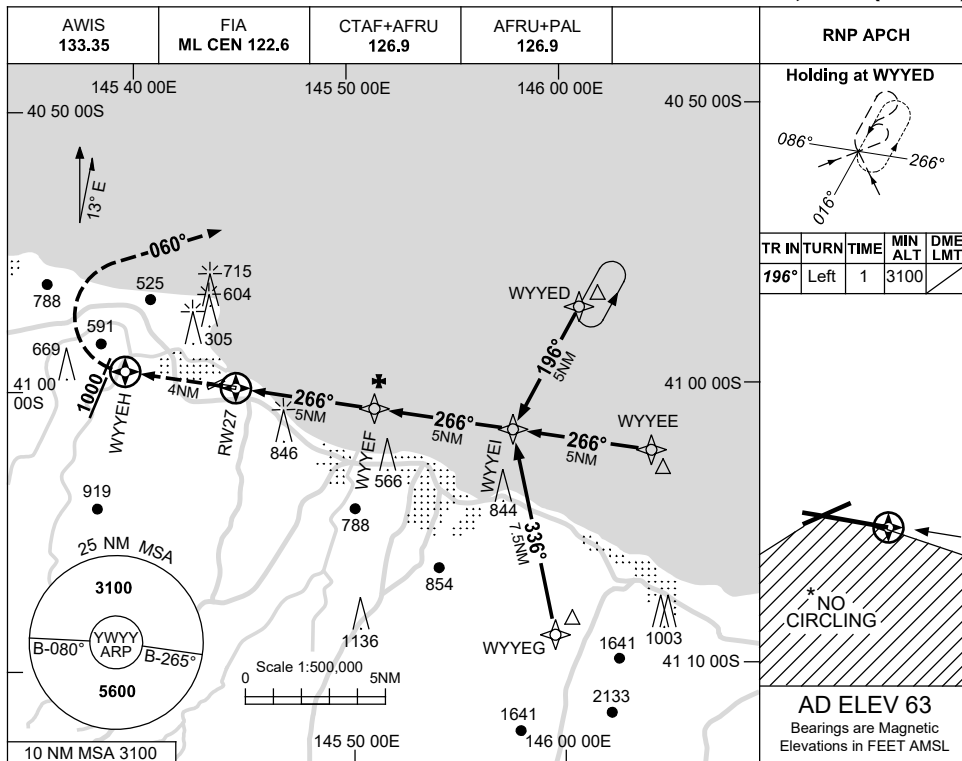
1. MAX IAS: INITIAL : 210KT.  
\*2. NO CIRCLING SOUTH OF RWY 09/27 & RWY 05/23.

Changes: CHART TITLE, PBN SPECIFICATION BOX, Editorial. WYWGN01-175

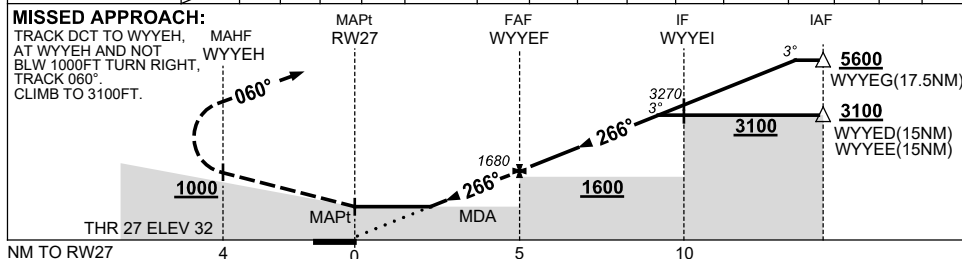
USE QNH

RNP RWY 27  
WYNYARD, TAS (YWYY)

15 JUN 2023



NM TO NEXT WPT	RW27	1.7	2	3	4	WYVEF	1	2	3	4	4.5	WYVEI	1	3	5	7.3
ALT (3° APCH PATH)		630	720	1040	1360	1680	1990	2310	2630	2950	3100	3270	3590	4220	4860	5600



NOTES

CATEGORY	A	B	C	D
LNAV	630 (598-3.4)			NOT APPLICABLE
CIRCLING *	1170 (1107-2.4)		1270 (1207-4.0)	
ALTERNATE	(1607-4.4)		(1707-6.0)	

- MAX IAS:  
INITIAL : 210KT.  
HOLD : 210KT.
- NO CIRCLING SOUTH OF RWY 09/27 & RWY 05/23.

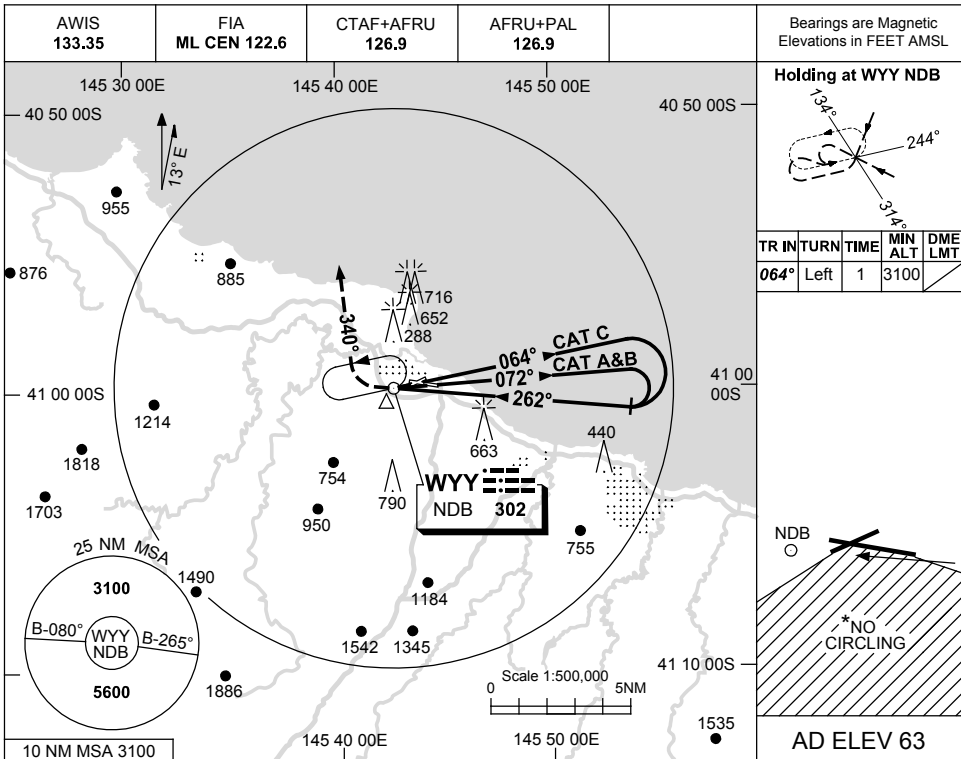
Changes: CHART TITLE, PBN SPECIFICATION BOX, Editorial.

WYVGN02-175

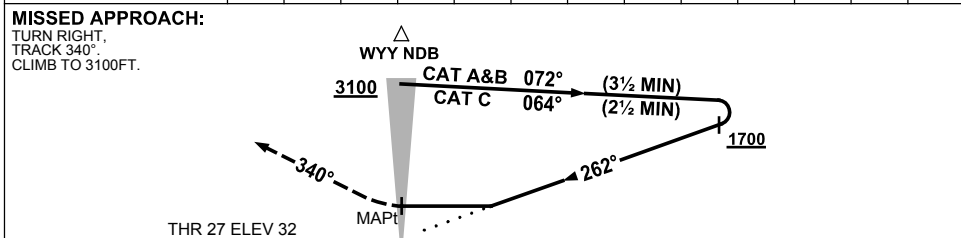
USE QNH

NDB RWY 27  
WYNYARD, TAS (YWYY)

23 MAR 2023



DIST BY DME		NOT APPLICABLE	
ALT			



NOTES

CATEGORY	A	B	C	D
S-I NDB	980 (948-5.0)			NOT APPLICABLE
CIRCLING*	1170 (1107-2.4)	1270 (1207-4.0)		
ALTERNATE	(1607-4.4)		(1707-6.0)	

1. MAX IAS:  
INITIAL :  
CAT C 210KT.
- \* 2. NO CIRCLING SOUTH OF RWY 09/27 & RWY 05/23.

Changes: AD ELEV.

WYNYB03-174