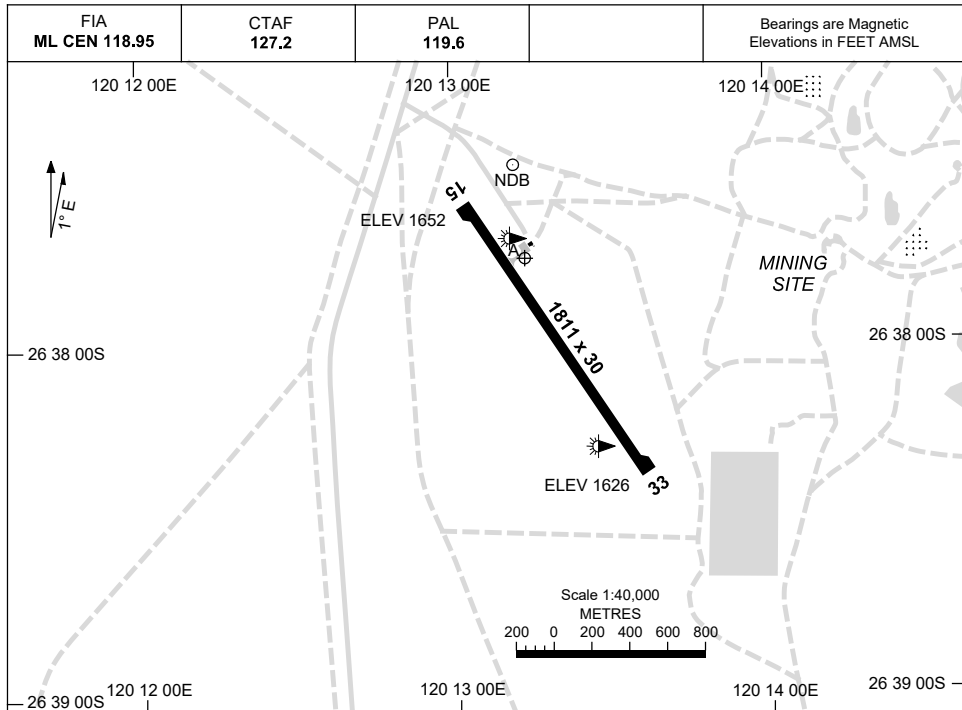


21 MAR 2024

AD ELEV 1652
26 37 45S 120 13 14E

AERODROME CHART
WILUNA, WA (YWLJ)



	AERODROME LIGHTING
RWY	TAXIWAY : BLUE EDGE RL : PAL 119.6 , SDBY (MANUAL ACT , 1 HR PN).
15 ¹⁴⁶ ₃₂₆ 33	LIRL LIRL

NOTES

1. FIA FREQ 118.95 AVBL IN CIRCUIT.
2. NIGHT OPS : EMERG ONLY UNLESS PRIOR PERMISSION OBTAINED FROM SHIRE OF WILUNA.
3. AWIS (PHONE) 08 6216 2641

Changes: AD ELEV, THR ELEV.

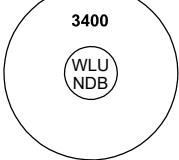
WLUD01-178

GNSS ARRIVAL PROCEDURES WILUNA, WA (YWLU)

21 MAR 2024

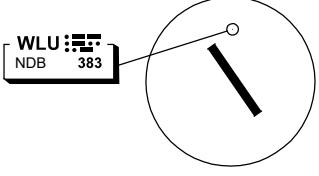
FIA ML CEN 118.95	CTAF 127.2	PAL 119.6	Bearings are Magnetic Elevations in FEET AMSL
-----------------------------	----------------------	---------------------	--

25 NM MSA

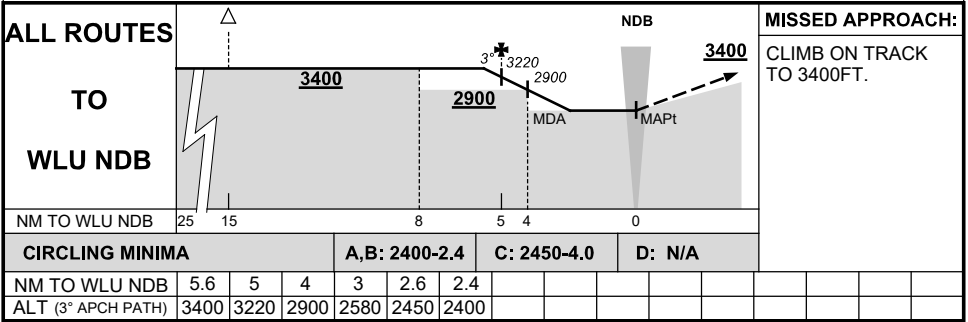


10 NM MSA 3300

REFERENCE WAYPOINT WLU NDB
AWIS (PHONE) 08 6216 2641



AD ELEV 1652



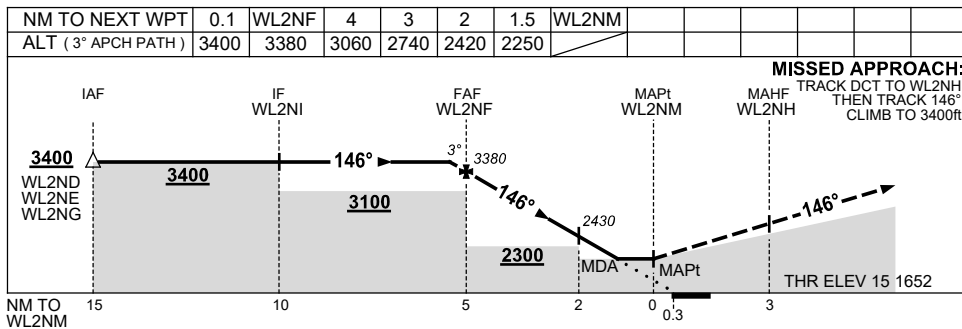
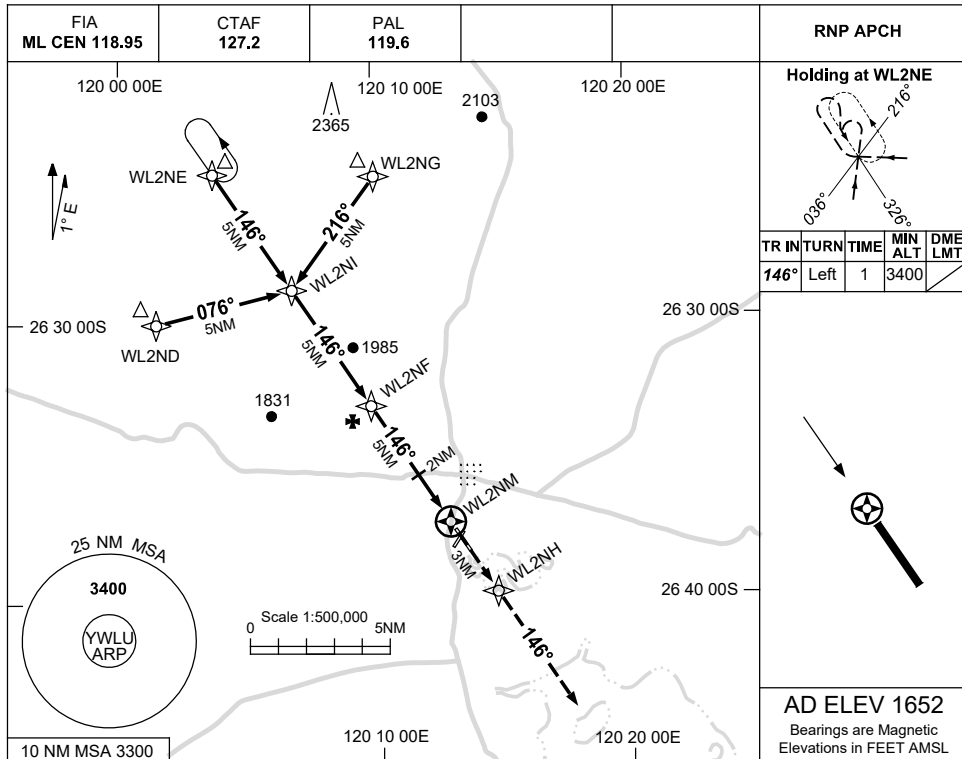
Changes: AD ELEV.

WLUDG01-178

USE QNH

RNP RWY 15
WILUNA, WA (YWLU)

21 MAR 2024



NOTES

CATEGORY	A	B	C	D
LNAV	2250 (598-3.4)			NOT APPLICABLE
CIRCLING	2290 (638-2.4)	2450 (798-4.0)		
ALTERNATE	(1138-4.4)		(1298-6.0)	

- MAX IAS:
INITIAL : 210KT.
HOLDING : 190KT.
- AWIS (PHONE):
08 6216 2641

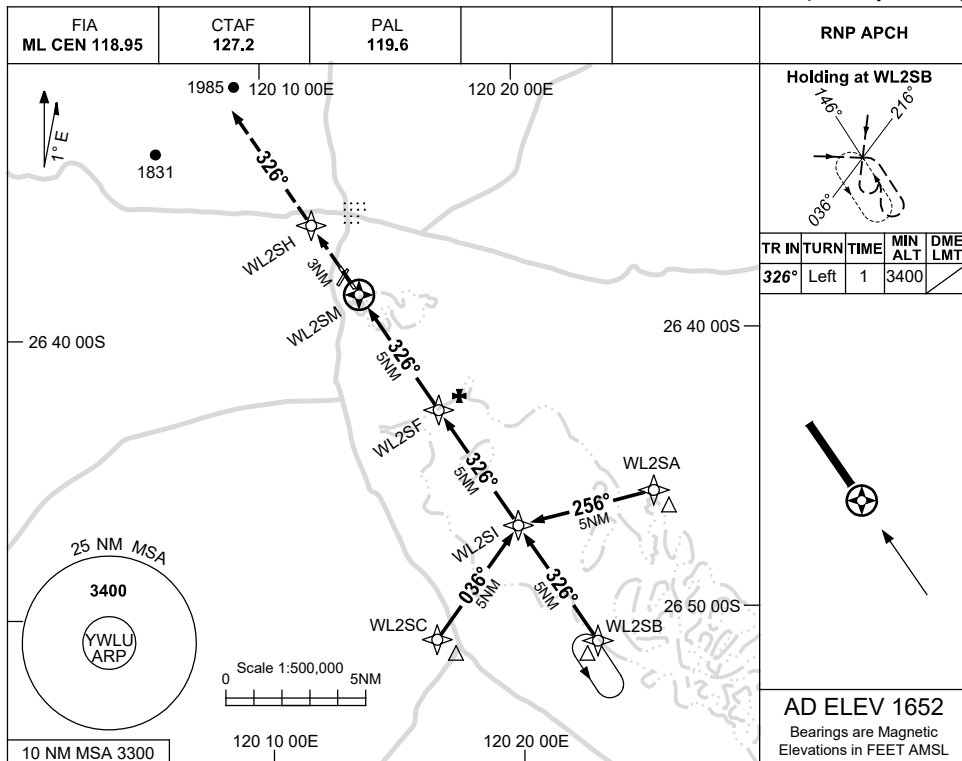
Changes: AD ELEV, THR ELEV, WPT NAMING CONVENTION, Editorial.

WLUGN01-178

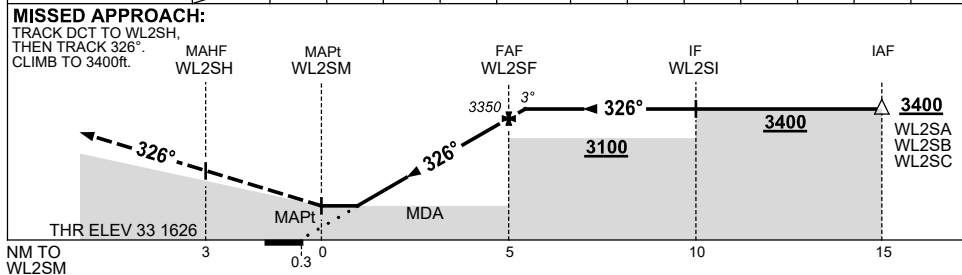
USE QNH

RNP RWY 33
WILUNA, WA (YWLU)

21 MAR 2024



NM TO NEXT WPT	WL2SM	1.5	2	3	4	WL2SF	0.1					
ALT (3° APCH PATH)		2250	2400	2720	3040	3350	3400					



NOTES

CATEGORY	A	B	C	D
LNAV	2250 (624-3.5)			NOT APPLICABLE
CIRCLING	2290 (638-2.4)		2450 (798-4.0)	
ALTERNATE	(1138-4.4)		(1298-6.0)	

1. MAX IAS: INITIAL : 210KT.
2. AWIS (PHONE): 08 6216 2641

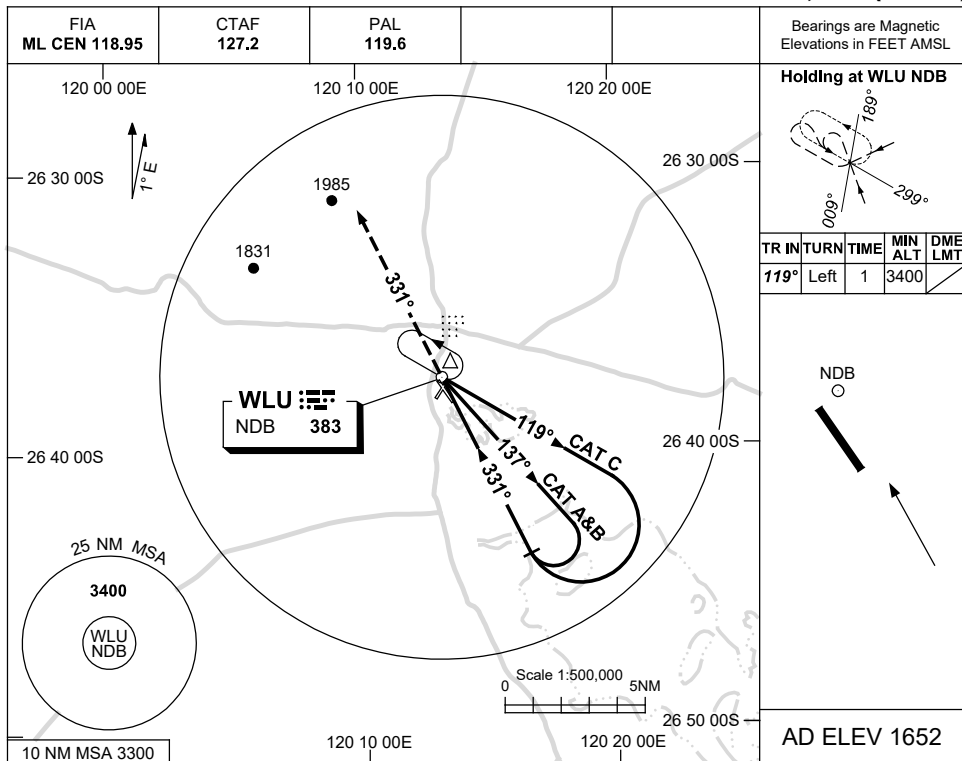
Changes: AD ELEV, THR ELEV, WPT NAMING CONVENTION, Editorial.

WLUGN02-178

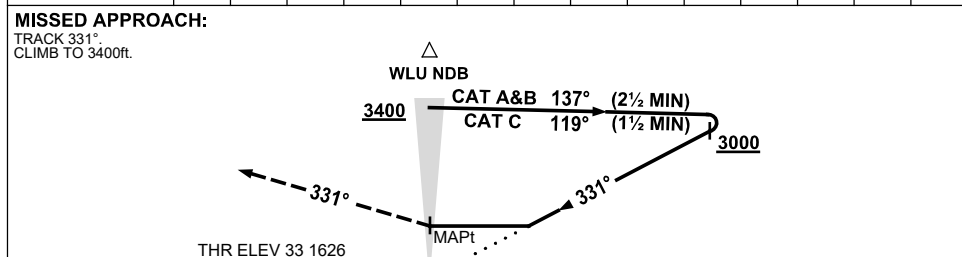
USE QNH

NDB RWY 33
WILUNA, WA (YWLU)

21 MAR 2024



DME DIST	NOT APPLICABLE									
ALT										



NM TO WLU NDB

NOTES

CATEGORY	A	B	C	D
S-I NDB	2250 (624-3.5)			NOT APPLICABLE
CIRCLING	2290 (638-2.4)	2450 (798-4.0)		
ALTERNATE	(1138-4.4)		(1298-6.0)	

1. MAX IAS:
INITIAL :
CAT C 210KT.
2. AWIS (PHONE):
08 6216 2641

Changes: AD ELEV, THR ELEV, INBD TR, NOTE 1.

WLUNB01-178