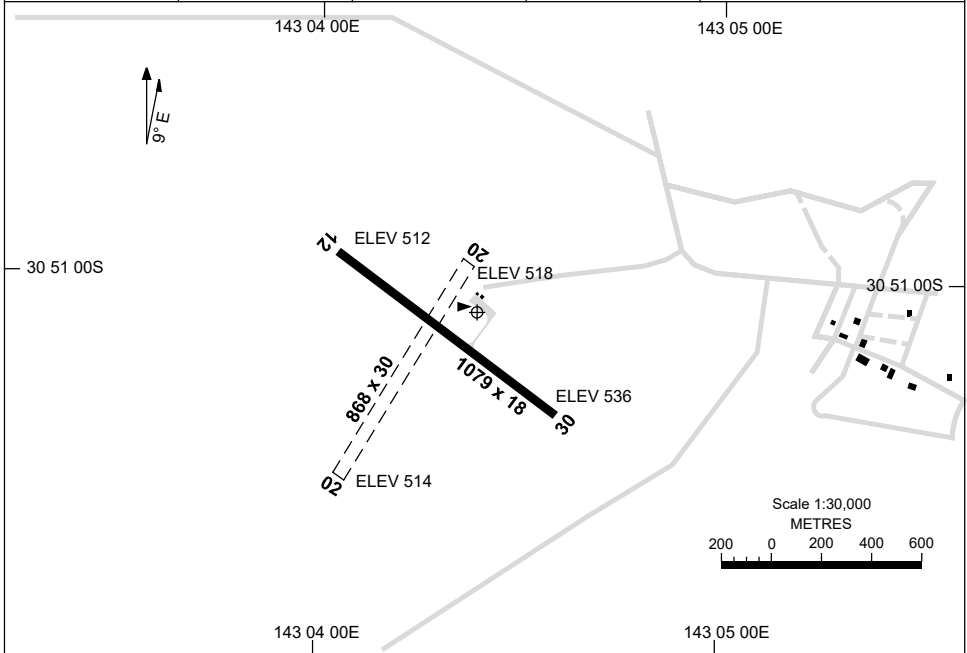


7 SEP 2023

AD ELEV 536
30 51 05S 143 04 24E

AERODROME CHART
WHITE CLIFFS, NSW (YWHC)

AWIS 128.45	FIA ML CEN 124.9	CTAF 126.7	PAL 120.05	Bearings are Magnetic Elevations in FEET AMSL
----------------	---------------------	---------------	---------------	--



RWY		AERODROME LIGHTING	
		TAXIWAY : BLUE EDGE RL : PAL 120.05, SDBY (15 MIN PN) for MEDI FLIGHTS only	
12	117	LIRL	
297	30	LIRL	
02	NIL	NIL	
NIL	20	NIL	

NOTES

1. AWIS PHONE 02 9353 6458.
2. ML CEN FIA 124.9 AVBL ABV 3500FT.

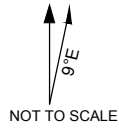
Changes: NOTES.

WHCAD01-176

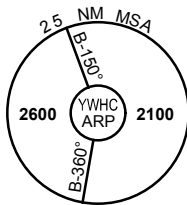
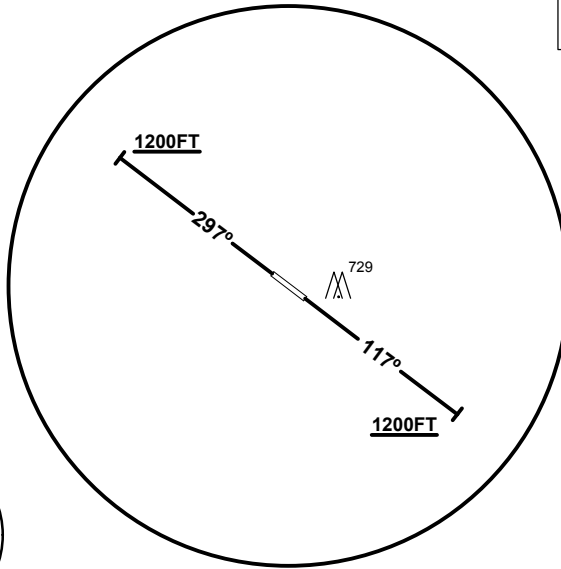
STANDARD INSTRUMENT DEPARTURE
WHITE CLIFFS ONE DEPARTURE
WHITE CLIFFS, NSW (YWHC)

21 MAY 2020

AWIS 128.45	FIA ML CEN 124.9	CTAF 126.7	PAL 120.05	BRG are MAG ELEV in FEET AMSL
----------------	---------------------	---------------	---------------	----------------------------------



SPEED
MAX IAS 250KT
BELOW 10,000FT



10 NM MSA 2000

WHITE CLIFFS ONE DEPARTURE

RWY 12

- GRAD 3.8% to 1200FT thence 3.3%
- Track 117°
- At or above 1200FT turn as required
- Continue climb to 2600FT
- Intercept flight plan route

RWY 30

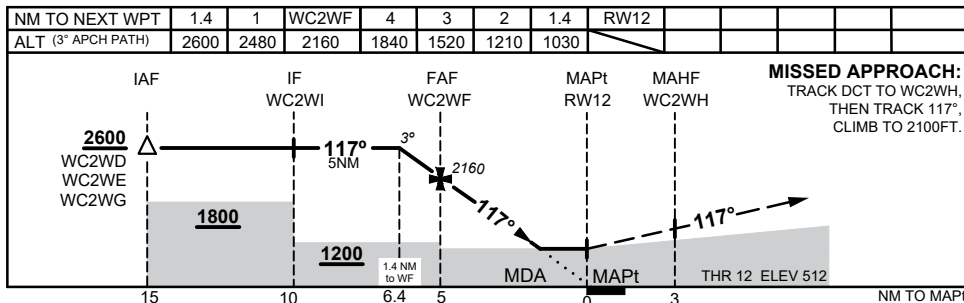
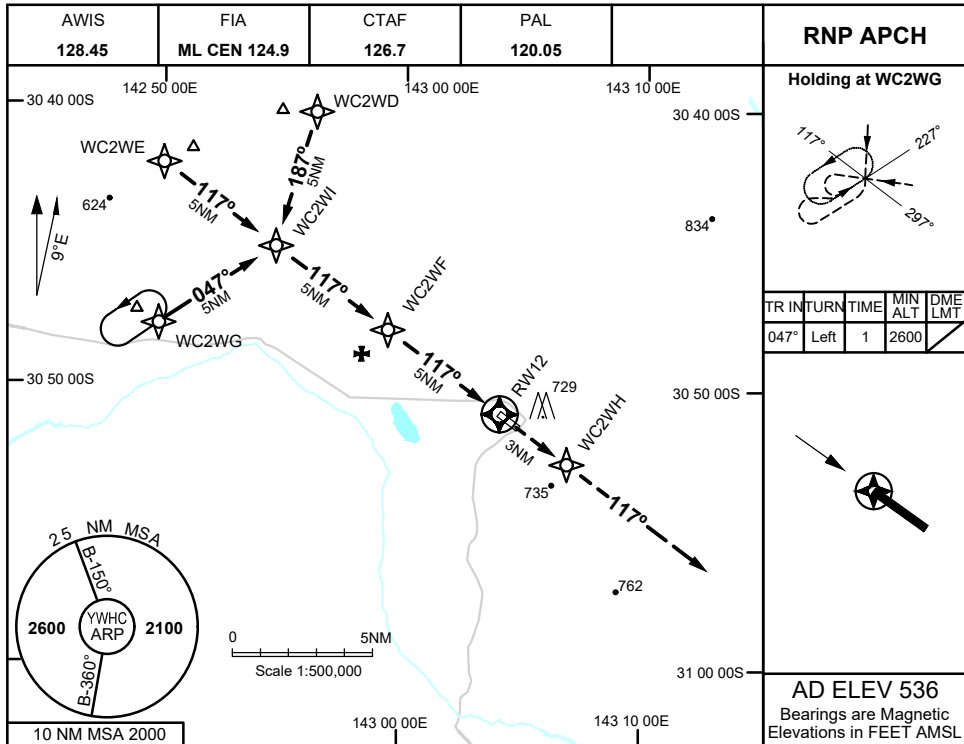
- GRAD 3.3%
- Track 297°
- At or above 1200FT turn as required
- Continue climb to 2600FT
- Intercept flight plan route

NOTES

- NIL -



1 DEC 2022



CATEGORY	A	B	C	D
LNAV	1030 (518 - 2.9)			NOT APPLICABLE
CIRCLING	1270 (734 - 2.4)		1370 (834 - 4.0)	
ALTERNATE	(1234 - 4.4)		(1334 - 6.0)	

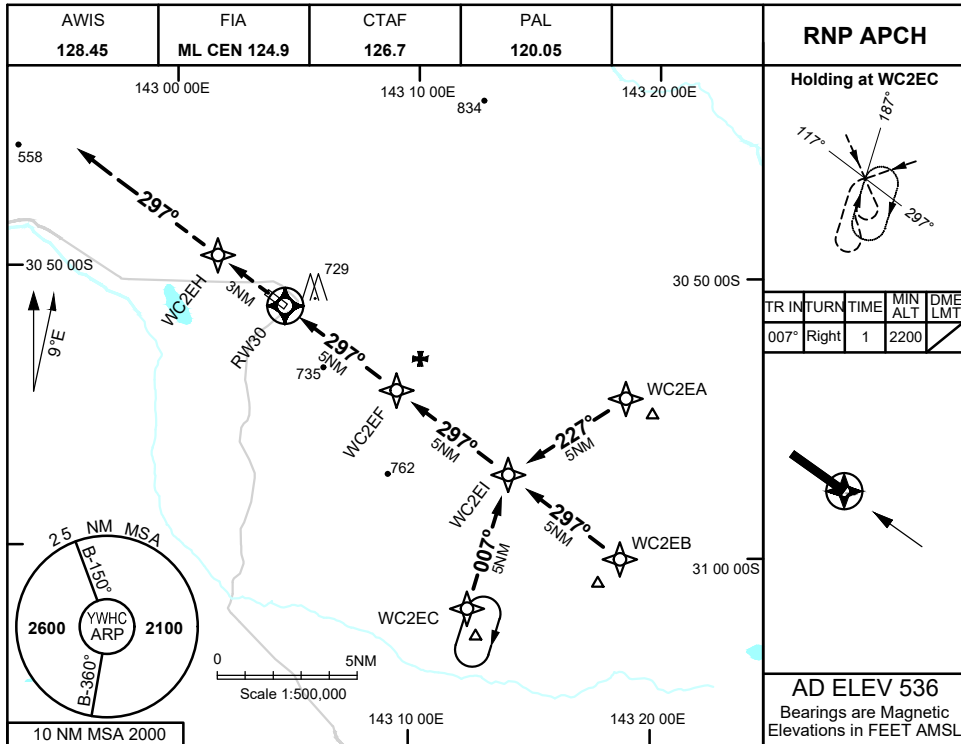
NOTES
1. MAX IAS:
INITIAL : 210KTS

Changes: CHART TITLE, WPT IDENTs, HOLDING SECTORS, Editorial

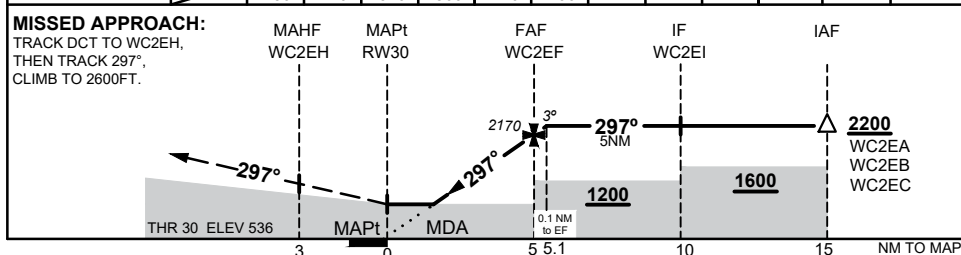
WHCGN01-173



1 DEC 2022



NM TO NEXT WPT	RW30	1.7	2	3	4	WC2EF	0.1					
ALT (3° APCH PATH)		1130	1220	1540	1860	2170	2200					



CATEGORY	A	B	C	D
LNAV	1130 (594 - 3.4)			NOT APPLICABLE
CIRCLING	1270 (734 - 2.4)		1370 (834 - 4.0)	
ALTERNATE	(1234 - 4.4)		(1334 - 6.0)	

NOTES
 1. MAX IAS:
 INITIAL : 210KTS

Changes: CHART TITLE, WPT IDENTS, Editorial

WHCGN02-173

