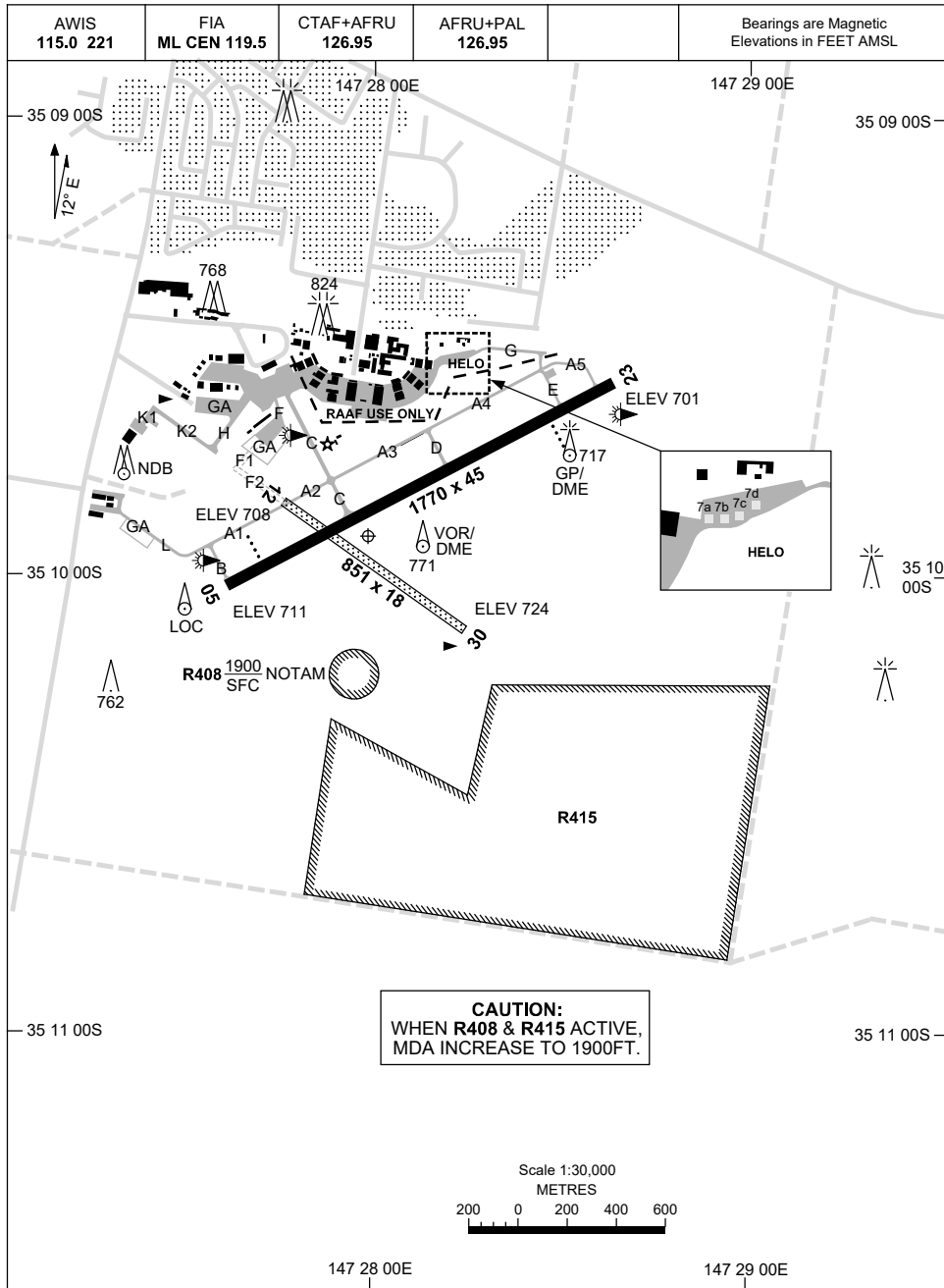


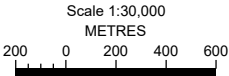
2 DEC 2021

AD ELEV 724
35 09 55S 147 27 59E

AERODROME CHART - Page 1
WAGGA WAGGA, NSW (YSWG)



CAUTION:
WHEN R408 & R415 ACTIVE,
MDA INCREASE TO 1900FT.



Changes: REVISED CHART, CHART TITLE, TWY A5 EXTENDED, TWY LABELS, Editorial.

SWGAD01-169

2 DEC 2021

AD ELEV 724
35 09 55S 147 27 59E

AERODROME CHART - Page 2
WAGGA WAGGA, NSW (YSWG)

AWIS 115.0 221	FIA ML CEN 119.5	CTAF+AFRU 126.95	AFRU+PAL 126.95		Bearings are Magnetic Elevations in FEET AMSL
RWY	AERODROME LIGHTING				
	ABN : ALT W/G 8 SEC TAXIWAYS : BLUE EDGE TWY C RL : AFRU+PAL 126.95 , SDBY (15 SEC) , PTBL PN (ARO: 02 6938 3161)				
05 ⁰⁵⁰	PAPI 3.0° 51FT LIRL (HN ONLY)				
²³⁰ 23	PAPI 3.0° 51FT LIRL (HN ONLY)				
12 ¹¹⁴	NIL				
²⁹³ 30	NIL				

NOTES

Changes: NEW CHART, ABN FLASH TIME.

SWGAD02-169

24 MAR 2022



PARKING POSITION INFORMATION

STAND	CO-ORDINATES	ELEV (ft)	CAPACITY	HYDRANT FUEL	DOCKING SYSTEM
1	35 09 35.23S 147 27 41.22E	743	DH8D	TANKER	PILOT/MARSHALLER
2	35 09 34.96S 147 27 42.63E	745	DH8D	TANKER	PILOT/MARSHALLER
3	35 09 34.45S 147 27 44.01E	744	DH8D	TANKER	PILOT/MARSHALLER
4	35 09 33.08S 147 27 45.32E	743	DH8D	TANKER	PILOT/MARSHALLER
5	35 09 33.77S 147 27 48.01E	745	DH8D	TANKER	PILOT
6	35 09 35.42S 147 27 47.75E	746	DH8D	TANKER	PILOT

Changes: ALL BAY ACFT CAPACITY, HYDRANT FUEL.



DME or GNSS ARRIVAL PROCEDURES WAGGA WAGGA, NSW (YSWG)

17 JUN 2021

AWIS 115.0 221	FIA ML CEN 119.5	CTAF+AFRU 126.95	AFRU+PAL 126.95		Bearings are Magnetic Elevations in FEET AMSL
-------------------	---------------------	---------------------	--------------------	--	--

25 NM MSA
3100
4200
R-020°/B-200°
R-175°/B-355°

**DME USING WG DME
REFERENCE WAYPOINT WG VOR**

R408
DEMOLITION SFC
1900FT NOTAM
3.5 NM
* NO CIRCLING

10 NM MSA 3000

WG NDB 221

WG VOR/DME 115.0

AD ELEV 724

* NO CIRCLING IN SECTOR SOUTH OF RWY 05/23 AND RWY 12/30 BEYOND 3.5NM.

AY TO WG

3600
013°
3000
WG VORor NDB

VOR or NDB

MISSED APPROACH:
TRACK 013°. CLIMB TO 4200FT.

CAUTION:
WHEN R408 ACTIVE, CAT A, B & C MDA INCREASE TO 1900FT

NM TO WG VOR	25	15	10	5	4	3	2	1.4	1.3										
CIRCLING MINIMA				A,B: 1780-2.4		C: 1810-4.0		D: 2010-5.0											
NM TO WG VOR	7	6	5	4	3	2	1.4	1.3											
ALT (3° APCH PATH)	3600	3280	2960	2640	2320	2010	1810	1780											

COR TO WG

3200
036°
3000
WG VORor NDB

VOR or NDB

MISSED APPROACH:
TURN LEFT, TRACK 350°. CLIMB TO 4200FT.

CAUTION:
WHEN R408 ACTIVE, CAT A, B & C MDA INCREASE TO 1900FT

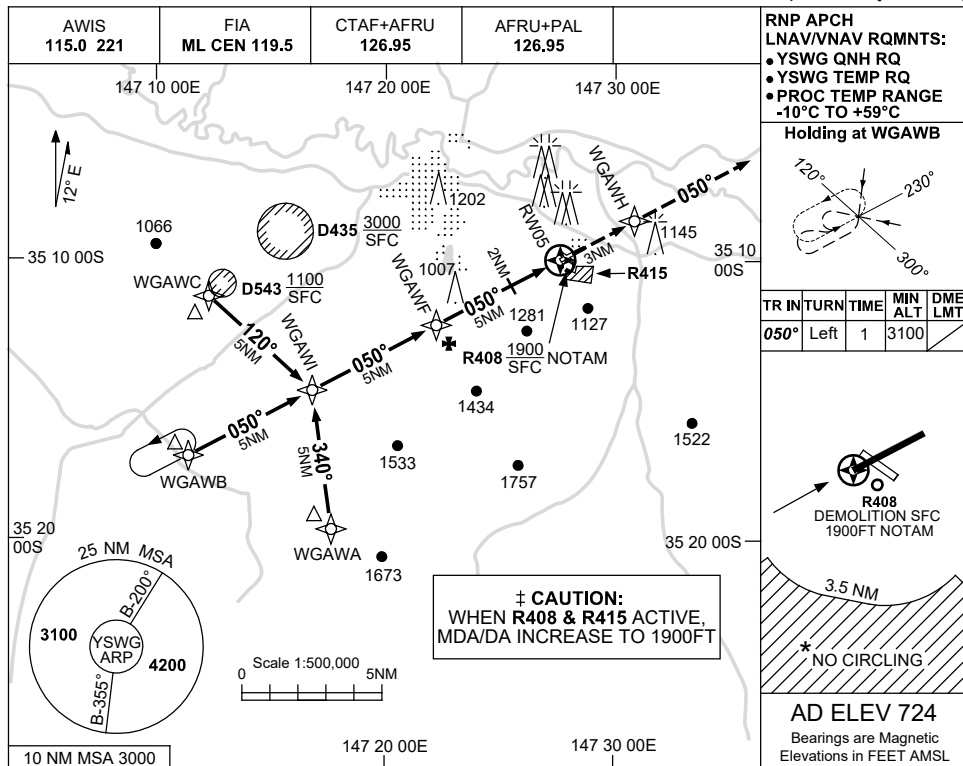
NM TO WG VOR	25	15	10	5	4	3	2	1.6	1.3										
CIRCLING MINIMA				A,B: 1710-2.4		C: 1810-4.0		D: 2010-5.0											
NM TO WG VOR	6	5	4	3	2.2	2	1.6	1.3											
ALT (3° APCH PATH)	3200	2890	2570	2250	2010	1930	1810	1710											

USE QNH

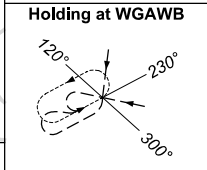
RNP RWY 05

23 MAR 2023

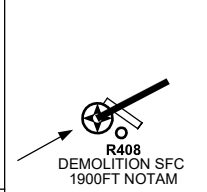
WAGGA WAGGA, NSW (YSWG)



RNP APCH
LNAV/VNAV RQMNTS:
• YSWG QNH RQ
• YSWG TEMP RQ
• PROC TEMP RANGE
-10°C TO +59°C

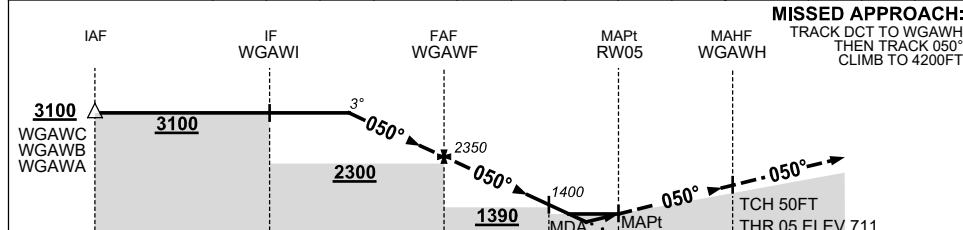


TR	IN	TURN	TIME	MIN ALT	DME LMT
050°	Left	1	3100		



AD ELEV 724
Bearings are Magnetic
Elevations in FEET AMSL

NM TO NEXT WPT	2.3	2	1	WGAWF	4	3	2	1.8	0.9	RW05
ALT (3° APCH PATH)	3100	2990	2670	2350	2030	1720	1400	1340	1050	



MISSED APPROACH:
TRACK DCT TO WGAWH,
THEN TRACK 050°,
CLIMB TO 4200FT.

NM TO RW05: 15, 10, 5, 2, 0, 3

CATEGORY	A	B	C	D
LNAV/VNAV	±	1050 (339-1.9)		
LNAV	±	1340 (629-3.6)		
CIRCLING *	±	1710 (986-2.4)	1810 (1086-4.0)	2010 (1286-5.0)
ALTERNATE		(1486-4.4)	(1586-6.0)	(1786-7.0)

- NOTES**
- MAX IAS:
INITIAL : 210KT.
 - NO CIRCLING IN SECTOR SOUTH OF RWY 05/23 AND RWY 12/30 BEYOND 3.5NM.

Changes: CHART TITLE, PBN SPECIFICATION BOX.

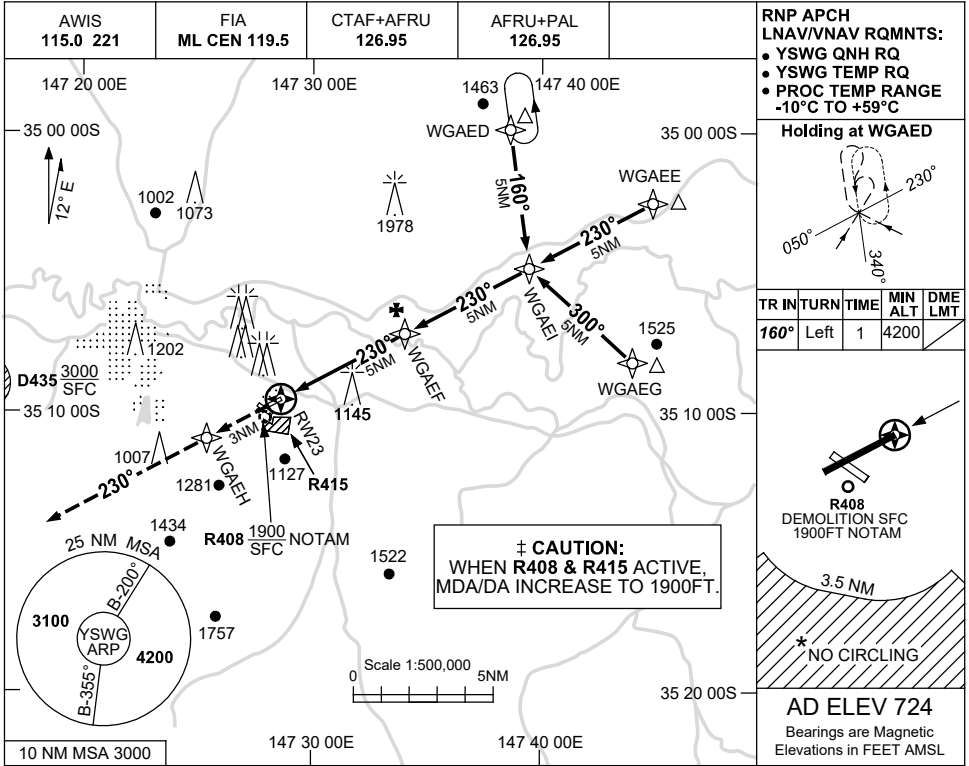
SWGGN01-174

USE QNH

RNP RWY 23

23 MAR 2023

WAGGA WAGGA, NSW (YSWG)



RNP APCH LNAV/VNAV RQMTS:

- YSWG QNH RQ
- YSWG TEMP RQ
- PROC TEMP RANGE -10°C TO +59°C

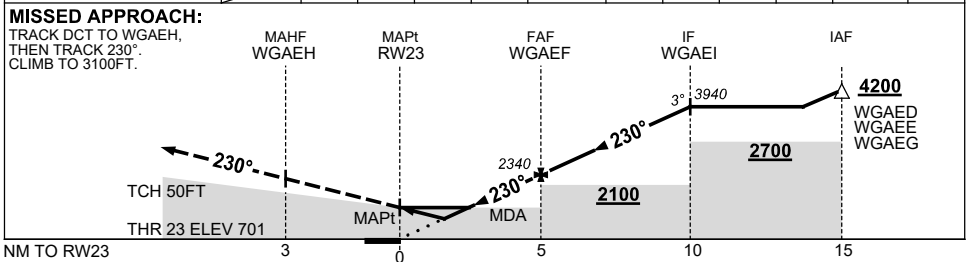
Holding at WGAED

TR	IN	TURN	TIME	MIN ALT	DME LMT
160°	Left	1	4200		

R408 DEMOLITION SFC 1900FT NOTAM

AD ELEV 724
Bearings are Magnetic
Elevations in FEET AMSL

NM TO NEXT WPT	RW23	1.6	2.3	3	4	WGAEF	1	2	3	4	WGAEI
ALT (3° APCH PATH)		1250	1470	1710	2020	2340	2660	2980	3300	3620	3940



NOTES

CATEGORY	A	B	C	D
LNAV/VNAV	±	1250 (549-3.1)		
LNAV	±	1470 (769-4.4)		
CIRCLING *	±	1710 (986-2.4)	1810 (1086-4.0)	2010 (1286-5.0)
ALTERNATE		(1486-4.4)	(1586-6.0)	(1786-7.0)

1. MAX IAS: INITIAL : 210KT.
- * 2. NO CIRCLING IN SECTOR SOUTH OF RWY 05/23 AND RWY 12/30 BEYOND 3.5NM.

Changes: CHART TITLE, PBN SPECIFICATION BOX.

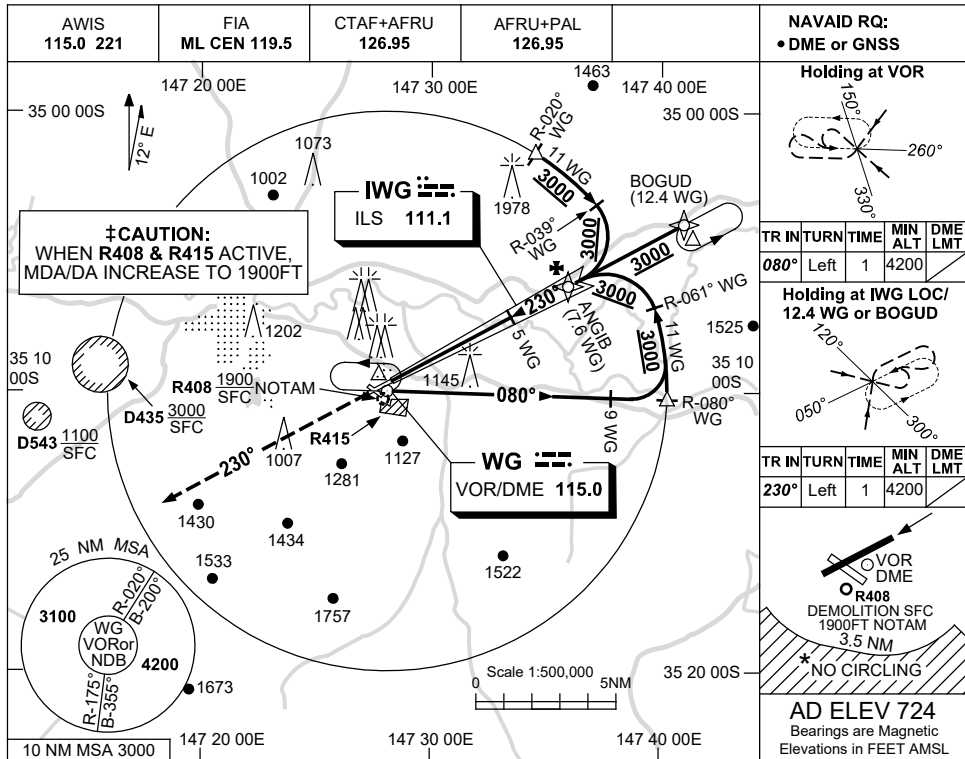
SWGGN02-174

USE QNH

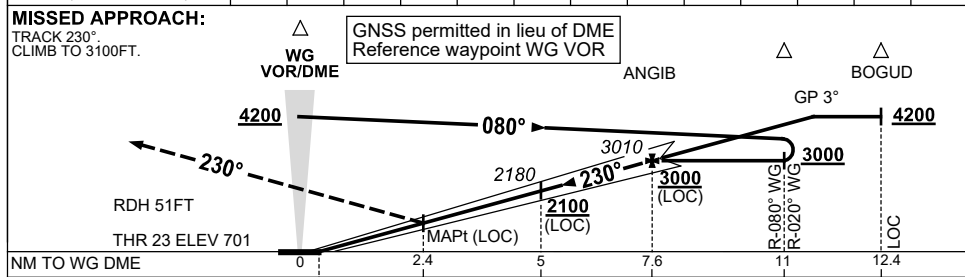
ILS-Y or LOC-Y RWY 23

WAGGA WAGGA, NSW (YSWG)

17 JUN 2021



DIST TO WG DME	2.8	3	4	5	6	7	7.6	8	9	10	11.4		
ALT (3° APCH PATH)	1470	1540	1860	2180	2490	2810	3010	3130	3450	3770	4200		



NM TO WG DME	0	2.4	5	7.6	11	12.4
NM TO THR 23	0	1.9	4.5	7.1	10.5	11.9

NOTES

- MAX IAS: INITIAL : 210KT.
- NO CIRCLING IN SECTOR SOUTH OF RWY 05/23 AND RWY 12/30 BEYOND 3.5NM.

CATEGORY	A	B	C	D
S-I ILS/DME	‡	1010(309) 1.7 (VIS 1.5 WITH ACTUAL QNH)		
S-I LOC/DME	‡	1470 (769-4.4)		
CIRCLING *	‡	1710 (986-2.4)	1810 (1086-4.0)	2010(1286-5.0)
ALTERNATE		(1486-4.4)	(1586-6.0)	(1786-7.0)

Changes: FROM SUP H124/20.

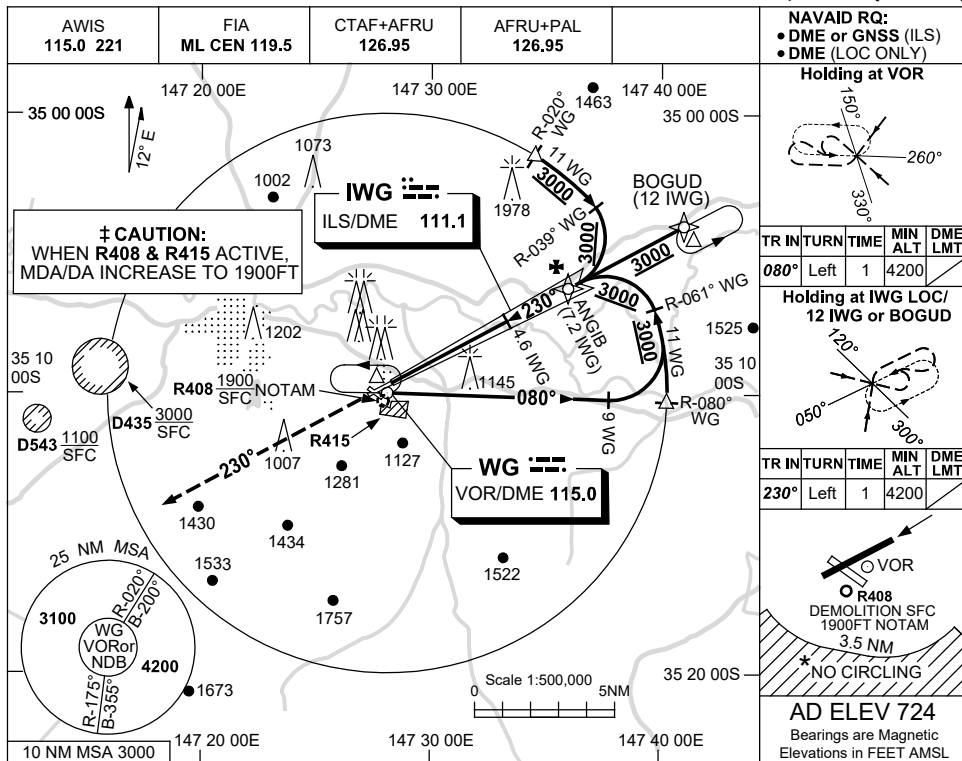
SWGII01-167

USE QNH

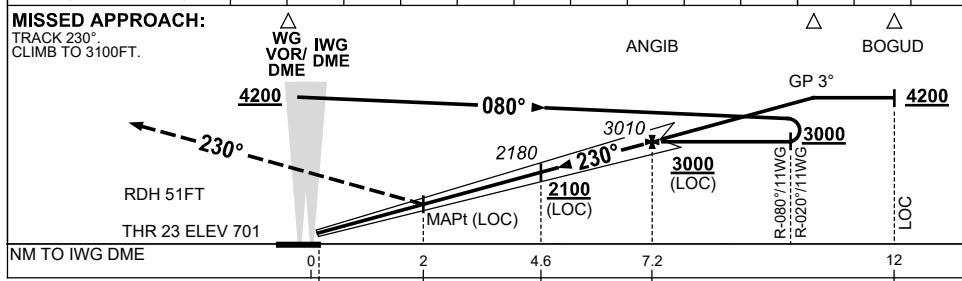
ILS-Z or LOC-Z RWY 23

17 JUN 2021

WAGGA WAGGA, NSW (YSWG)



DIST TO IWG DME	2.4	3	4	4.6	6	7	7.2	8	9	10	11		
ALT (3° APCH PATH)	1470	1660	1980	2180	2620	2930	3010	3250	3570	3890	4200		



NM TO IWG DME	0	2	4.6	7.2	12
NM TO THR 23	0	1.9	4.5	7.1	11.9

CATEGORY	A	B	C	D
S-I ILS/DME	‡	1010 (309) 1.7 (VIS 1.5 WITH ACTUAL QNH)		
S-I LOC/DME	‡	1470 (769-4.4)		
CIRCLING *	‡	1710 (986-2.4)	1810 (1086-4.0)	2010 (1286-5.0)
ALTERNATE		(1486-4.4)	(1586-6.0)	(1786-7.0)

- NOTES**
- MAX IAS: INITIAL : 210KT.
 - NO CIRCLING IN SECTOR SOUTH OF RWY 05/23 AND RWY 12/30 BEYOND 3.5NM.

Changes: FROM SUP H124/20.

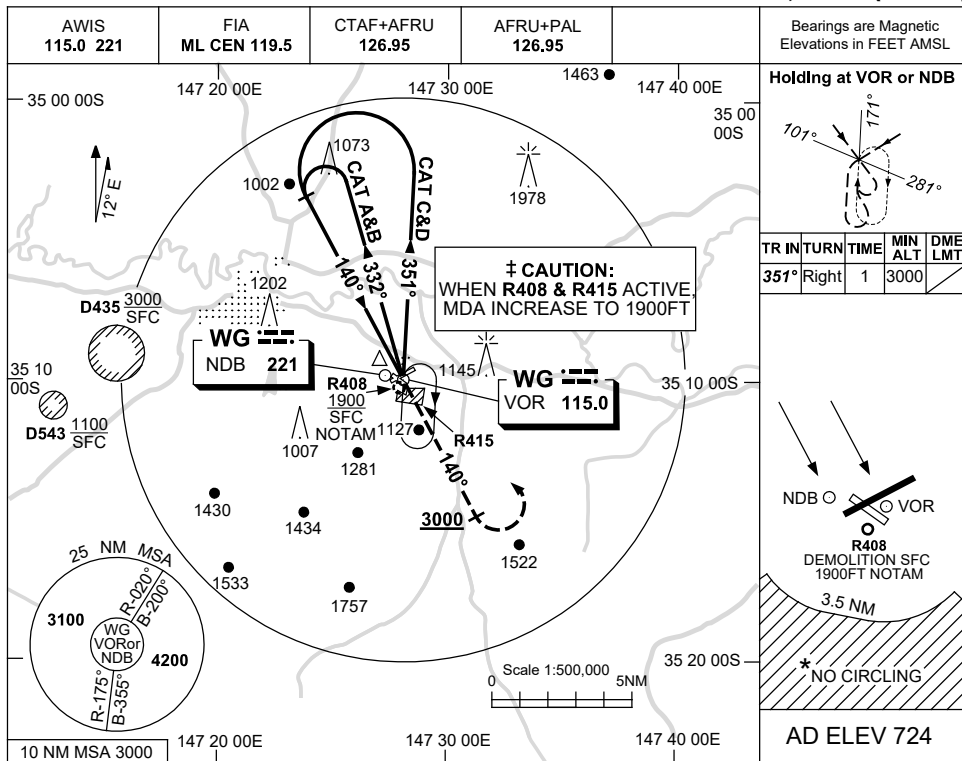
SWGII02-167

USE QNH

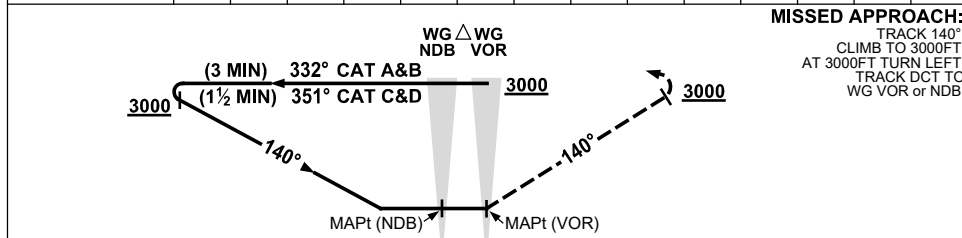
NDB-A or VOR-A

WAGGA WAGGA, NSW (YSWG)

17 JUN 2021



DME DIST	NOT APPLICABLE
ALT	



NOTES

1. MAX IAS :
HOLDING: 230KT.
INITIAL :
CAT A&B 140KT.
CAT C&D 210KT.
- * 2. NO CIRCLING IN SECTOR SOUTH OF RWY 05/23 AND RWY 12/30 BEYOND 3.5NM.

CATEGORY	A	B	C	D
CIRCLING *	‡ 1710 (986-2.4)	1810 (1086-4.0)	2010 (1286-5.0)	
ALTERNATE	(1486-4.4)	(1586-6.0)	(1786-7.0)	

Changes: FROM SUP H124/20.

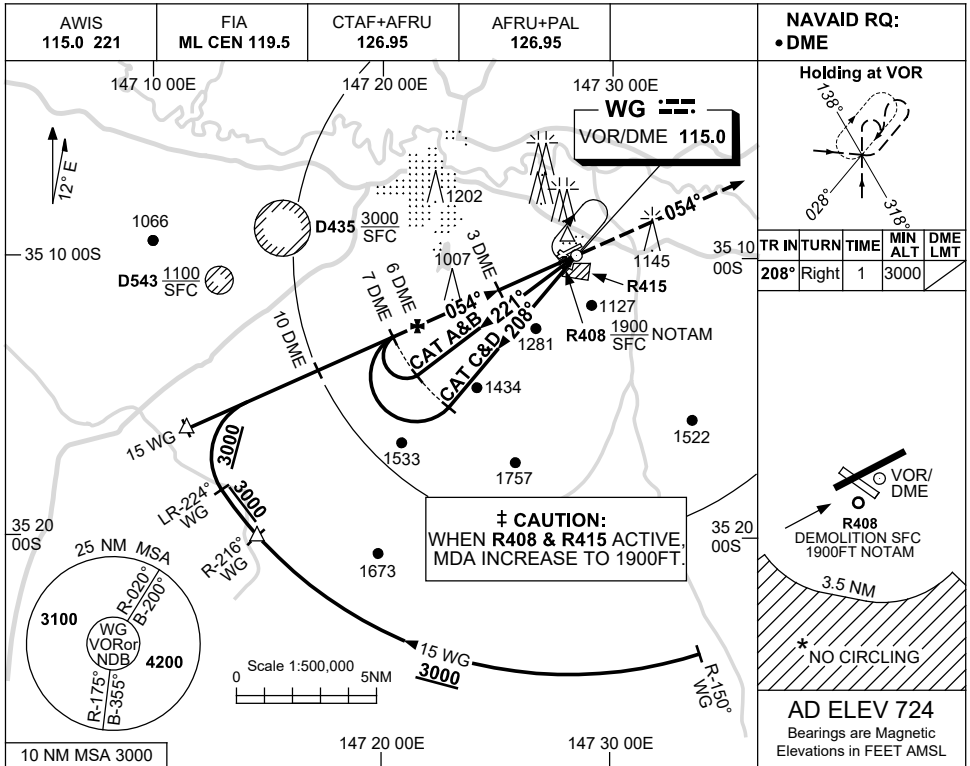
SWGNB01-167

USE QNH

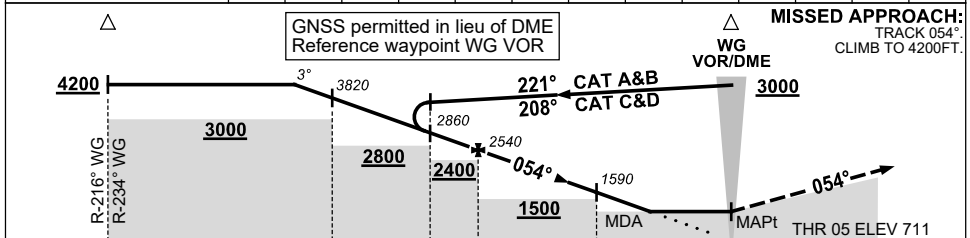
VOR RWY 05

17 JUN 2021

WAGGA WAGGA, NSW (YSWG)



NM TO WG DME	11.2	11	10	9	8	7	6	5	4	3	2.2	
ALT (3° APCH PATH)	4200	4140	3820	3500	3180	2860	2540	2230	1910	1590	1340	



NM TO WG DME

NOTES

CATEGORY	A	B	C	D
S-I VOR/DME ‡	1340 (629-3.6)			
CIRCLING *	1710 (986-2.4)		1810 (1086-4.0)	2010 (1286-5.0)
ALTERNATE	(1486-4.4)		(1586-6.0)	(1786-7.0)

- 1. MAX IAS: INITIAL : 210KT.
- * 2. NO CIRCLING IN SECTOR SOUTH OF RWY 05/23 AND RWY 12/30 BEYOND 3.5NM.

Changes: FROM SUP H124/20.

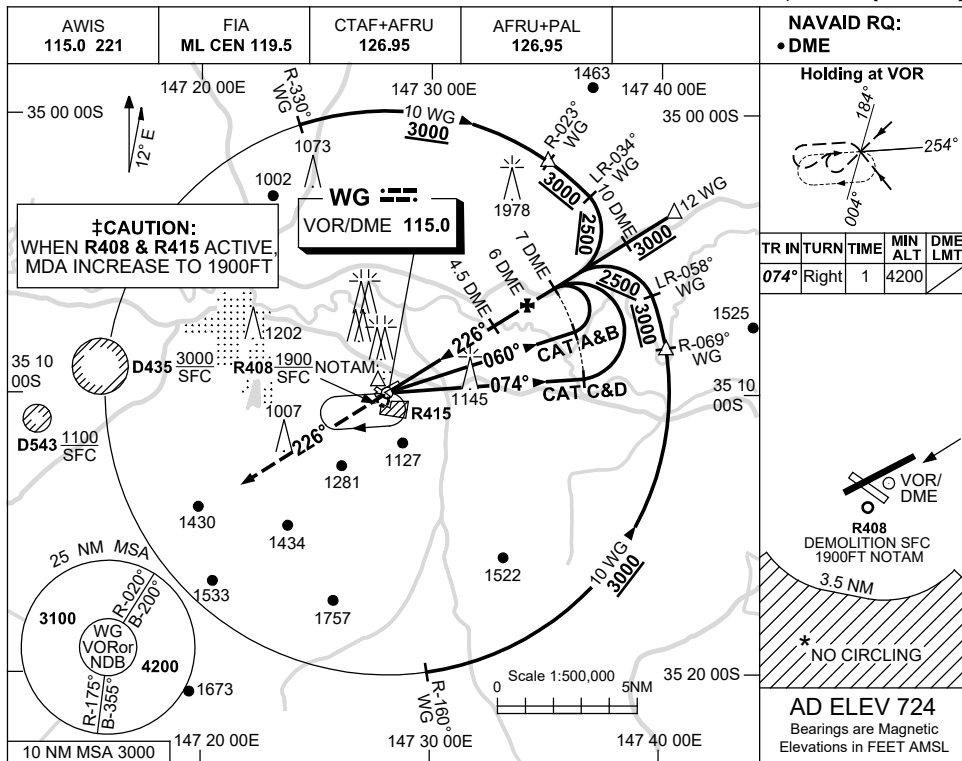
SWGVO01-167

USE QNH

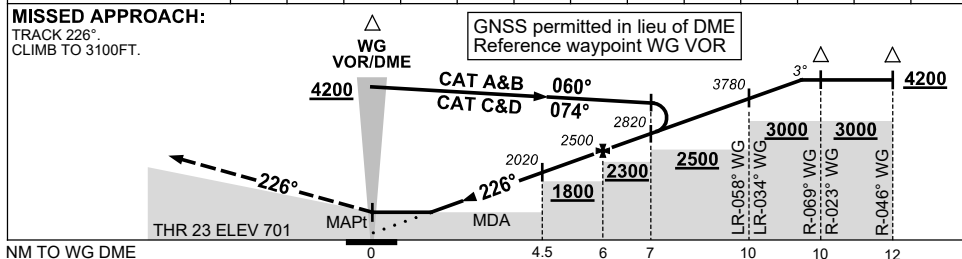
VOR RWY 23

17 JUN 2021

WAGGA WAGGA, NSW (YSWG)



NM TO WG DME	2.8	3	4	4.5	5	6	7	8	9	10	11.3		
ALT (3° APCH PATH)	1500	1550	1870	2020	2180	2500	2820	3140	3460	3780	4200		



NOTES

CATEGORY	A	B	C	D
S-I VOR/DME ‡		1500 (799-4.6)		
CIRCLING *	‡ 1710 (986-2.4)	1810 (1086-4.0)	2010 (1286-5.0)	
ALTERNATE	(1486-4.4)	(1586-6.0)	(1786-7.0)	

1. MAX IAS: INITIAL : 210KT.
- * 2. NO CIRCLING IN SECTOR SOUTH OF RWY 05/23 AND RWY 12/30 BEYOND 3.5NM.

Changes: FROM SUP H124/20.

SWGVO02-167