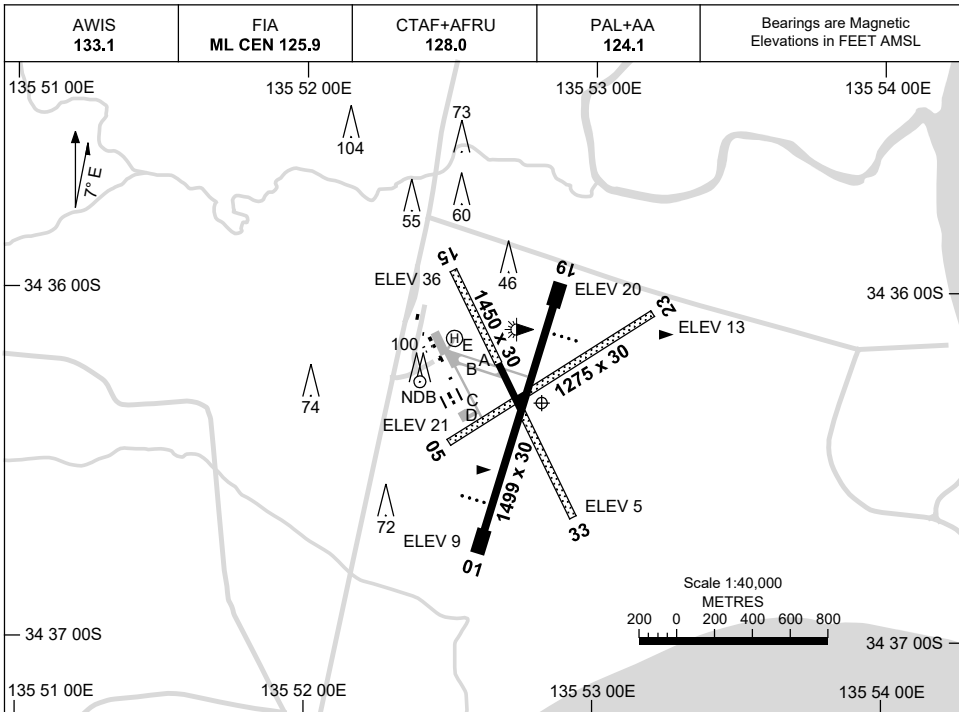


8 SEP 2022

AD ELEV 36
34 36 19S 135 52 49E

AERODROME CHART
PORT LINCOLN, SA (YPLC)



AERODROME LIGHTING	
RWY	TAXIWAY : BLUE EDGE ON TWY A, B AND E RL : PAL+AA 124.1 , SDBY (15 SEC)
01 ⁰¹⁰ 190 19	PAPI 3.0° 45FT LIRL PAPI 3.0° 45FT LIRL
05 ⁰⁵¹ 231 23	NIL NIL
15 ¹⁴⁷ 327 33	LIRL LIRL
NOTES	

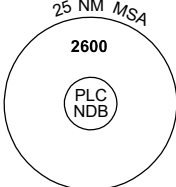
Changes: TWY D AND E ADDED, TWY LIGHTING, HLS, COORD FORMAT, NOTES.

PLCAD01-172

GNSS ARRIVAL PROCEDURES PORT LINCOLN, SA (YPLC)

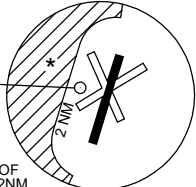
16 JUN 2022

AWIS 133.1	FIA ML CEN 125.9	CTAF+AFRU 128.0	PAL+AA 124.1	Bearings are Magnetic Elevations in FEET AMSL
---------------	---------------------	--------------------	-----------------	--



10 NM MSA 2600

REFERENCE WAYPOINT PLC NDB

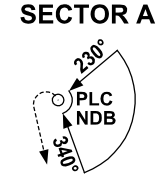


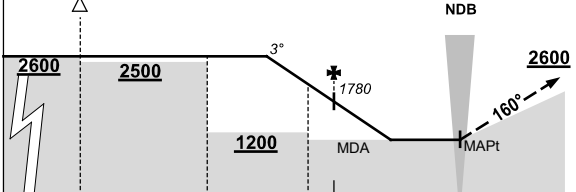
PLC **NDB 389**

* NO CIRCLING WEST OF
RWY 01/19 BEYOND 2NM.

AD ELEV 36

SECTOR A



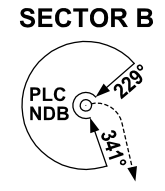


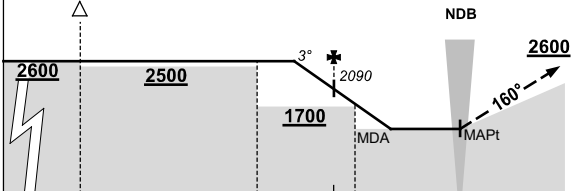
MISSED APPROACH:

TRACK 160°.
CLIMB TO 2600FT.

NM TO PLC NDB	25	15	10	6	5	0											
CIRCLING MINIMA	A,B: 1040-2.4		C: 1210-4.0		D: N/A												
NM TO PLC NDB	7.6	7	6	5	4	3	2.7										
ALT (3° APCH PATH)	2600	2420	2100	1780	1460	1140	1040										

SECTOR B





MISSED APPROACH:

TRACK 160°.
CLIMB TO 2600FT.

NM TO PLC NDB	25	15	8	5	4	0										
CIRCLING MINIMA	A,B: 1370-2.4		C: 1370-4.0		D: N/A											
NM TO PLC NDB	6.6	6	5	4	3	2.8										
ALT (3° APCH PATH)	2600	2410	2090	1770	1450	1370										

Changes: PAL+AA, Editorial.

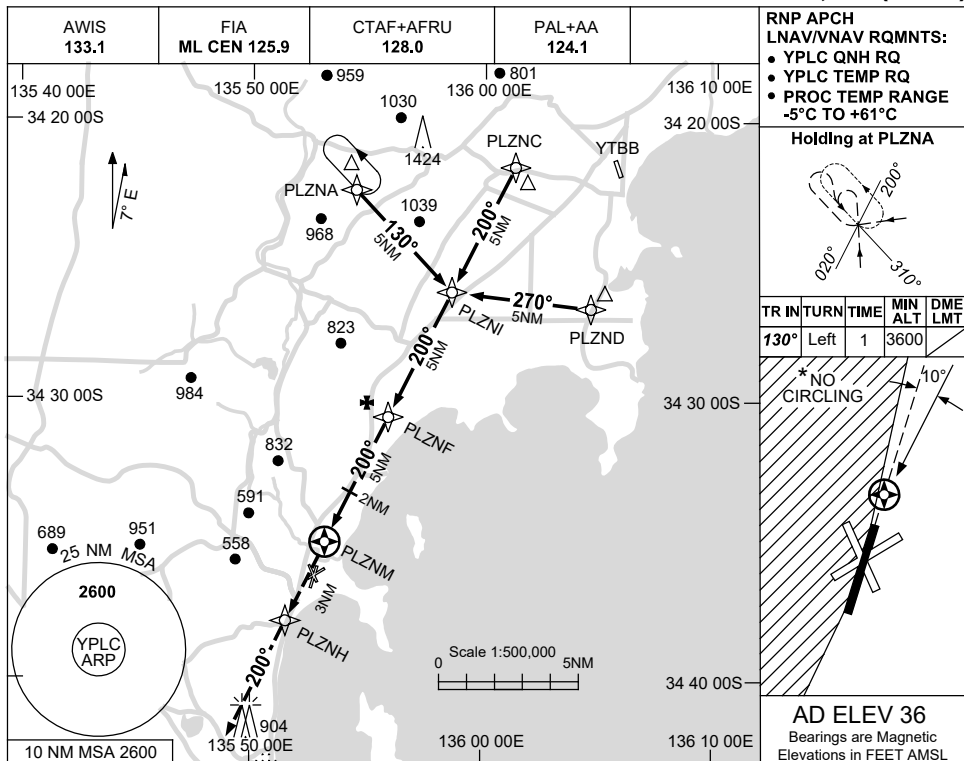


USE QNH

RNP RWY 19

PORT LINCOLN, SA (YPLC)

1 DEC 2022



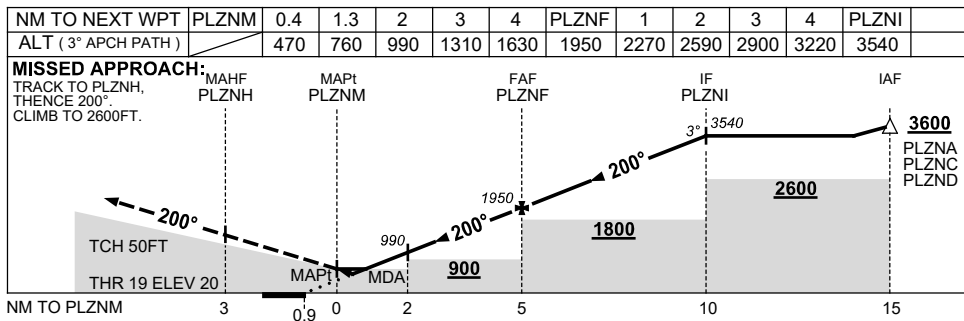
RNP APCH LNAV/VNAV RQMNTS:

- YPLC QNH RQ
- YPLC TEMP RQ
- PROC TEMP RANGE -5°C TO +61°C

Holding at PLZNA

TR	IN	TURN	TIME	MIN ALT	DME LMT
130°	Left	1	3600		

AD ELEV 36
Bearings are Magnetic Elevations in FEET AMSL



NOTES

CATEGORY	A	B	C	D
LNAV/VNAV		470 (450-2.5)		NOT APPLICABLE
LNAV		760 (740-4.2)		
CIRCLING*	1040 (1004-2.4)	1210 (1174-4.0)		
ALTERNATE	(1504-4.4)	(1674-6.0)		

- MAX IAS:
HOLDING: 210KT.
INITIAL : 210KT.
- NO CIRCLING WEST OF RWY 01/19.
- HOLDING AND INITIAL OVER-LIES TUMBY BAY RNP PROC.

Changes: CHART TITLE, PBN SPECIFICATION BOX.

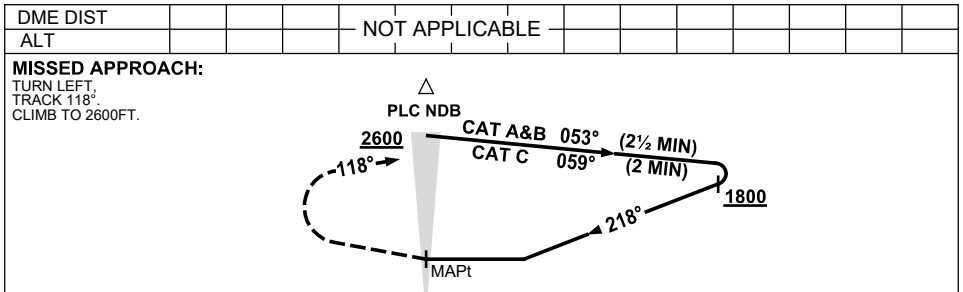
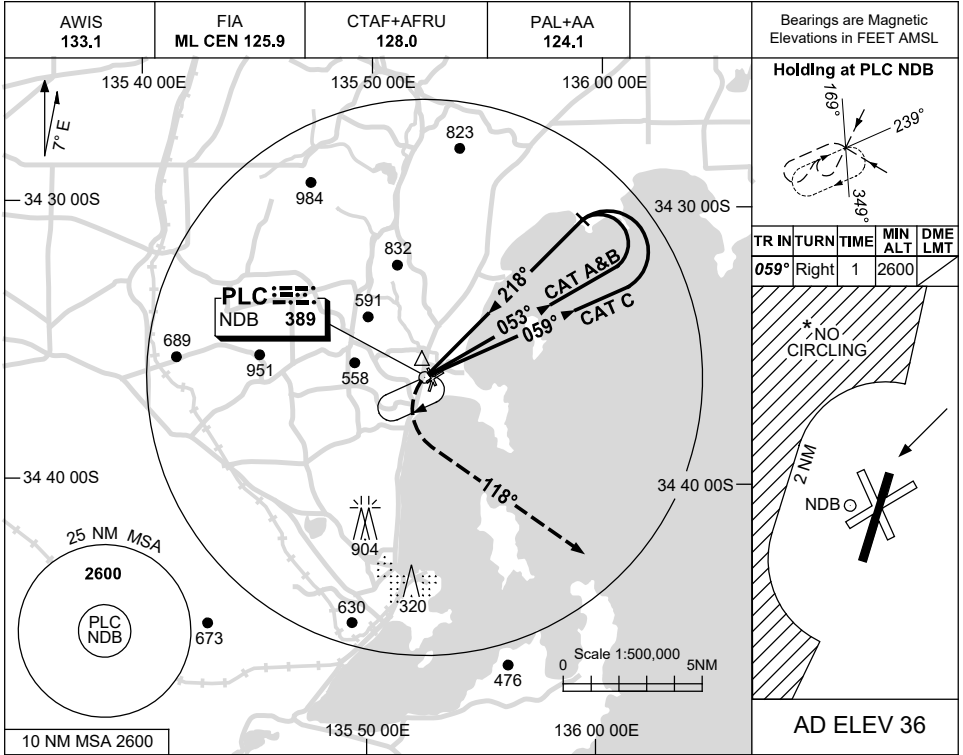
PLCGN01-173

USE QNH

NDB-A

16 JUN 2022

PORT LINCOLN, SA (YPLC)



NOTES

CATEGORY	A	B	C	D
CIRCLING *	1040 (1004-2.4)		1210 (1174-4.0)	
ALTERNATE	(1504-4.4)		(1674-6.0)	

1. MAX IAS:
INITIAL :
CAT C 180KT.
- *2. NO CIRCLING WEST OF RWY 01/19 BEYOND 2NM.

Changes: PAL+AA.

PLCNB01-171