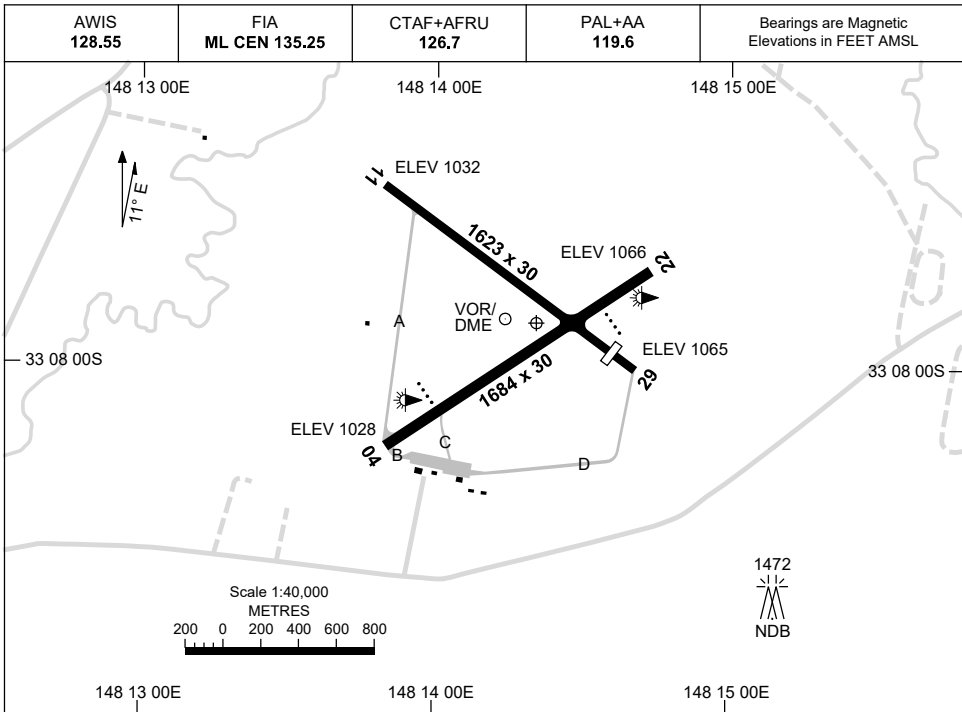


24 MAR 2022

AD ELEV 1069
33 07 53S 148 14 21E

AERODROME CHART
PARKES, NSW (YPKS)



	AERODROME LIGHTING	
RWY	TAXIWAY : BLUE EDGE RUNWAY : PAL+AA 119.6 , SDBY (1 MINUTE)	
04 <small>044</small>	PAPI 3.0° 48FT LIRL RTIL	
<small>224</small> 22	PAPI 3.0° 48FT LIRL RTIL	
11 <small>114</small>	NIL	
<small>294</small> 29	NIL	

NOTES

1. AWIS FREQ RQ 1 SEC TRANSMIT PULSE TO ACTIVATE.
2. FIA FREQ 135.25 AVBL IN CIRCUIT AREA.

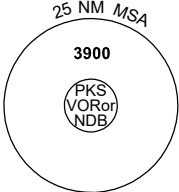
Changes: PAL+AA, NOTE 2 DELETED, Editorial.

PKSAD01-170

DME or GNSS ARRIVAL PROCEDURES PARKES, NSW (YPKS)

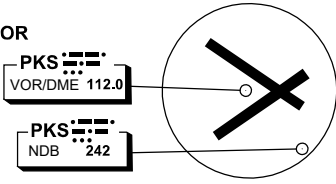
24 MAR 2022

AWIS 128.55	FIA ML CEN 135.25	CTAF+AFRU 126.7	PAL+AA 119.6	Bearings are Magnetic Elevations in FEET AMSL
----------------	----------------------	--------------------	-----------------	--



25 NM MSA
3900
PKS
VOR or
NDB

**DME USING PKS DME
REFERENCE WAYPOINT PKS VOR**

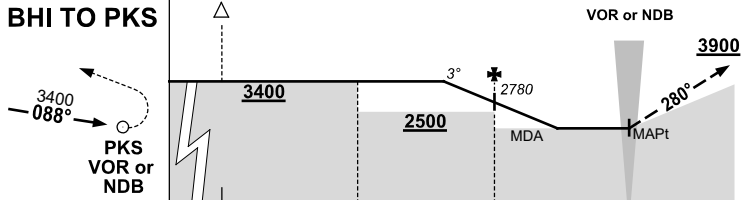


PKS VOR/DME 112.0
PKS NDB 242

10 NM MSA 3800

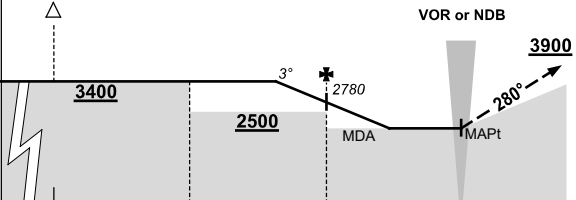
AD ELEV 1069

BHI TO PKS



3400
088°
PKS
VOR or
NDB

VOR or NDB



3900
280°

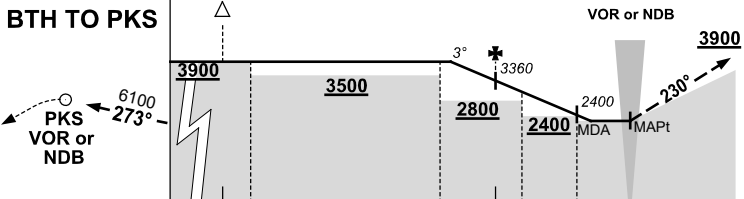
MISSED APPROACH:

TURN LEFT,
TRACK 280°. CLIMB TO 3900FT.

MAX IAS IN MAP
TURN 180KT.

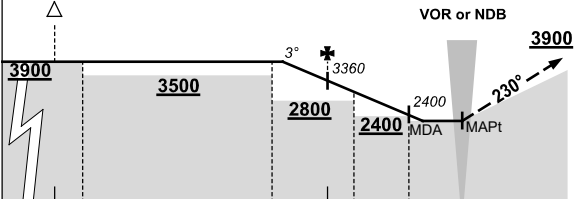
NM TO PKS VOR	25	15	10	5	0								
CIRCLING MINIMA	A,B: 2070-2.4				C: 2370-4.0		D: N/A						
NM TO PKS VOR	6.9	6	5	4	3.7	3	2.7						
ALT (3° APCH PATH)	3400	3100	2780	2460	2370	2150	2070						

BTH TO PKS



6100
273°
PKS
VOR or
NDB

VOR or NDB



3900
230°

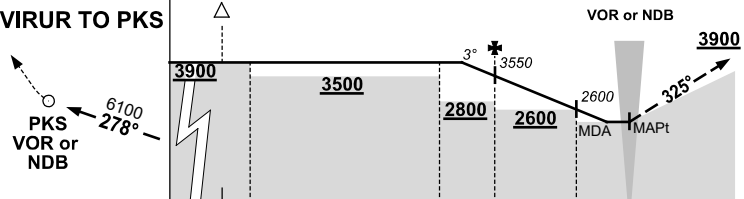
MISSED APPROACH:

TURN LEFT,
TRACK 230°. CLIMB TO 3900FT.

NOTE:
1. DME COVERAGE NOT AVBL AT 3900FT BEYOND 26 NM FM VOR.

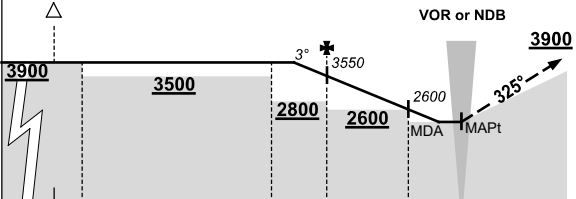
NM TO PKS VOR	27	15	14	7	5	4	2	0					
CIRCLING MINIMA	A,B: 2240-2.4				C: 2370-4.0		D: N/A						
NM TO PKS VOR	6.7	6	5	4	3	2	1.9	1.5					
ALT (3° APCH PATH)	3900	3670	3360	3040	2720	2400	2370	2240					

VIRUR TO PKS



6100
278°
PKS
VOR or
NDB

VOR or NDB



3900
325°

MISSED APPROACH:

TURN RIGHT,
TRACK 325°. CLIMB TO 3900FT.

NOTE:
1. DME COVERAGE NOT AVBL AT 3900FT BEYOND 22 NM FM VOR.

NM TO PKS VOR	27	15	14	7	5	2	0						
CIRCLING MINIMA	A,B: 2240-2.4				C: 2370-4.0		D: N/A						
NM TO PKS VOR	6.1	6	5	4	3	2	1.3	1	0.9				
ALT (3° APCH PATH)	3900	3870	3550	3230	2920	2600	2370	2280	2240				

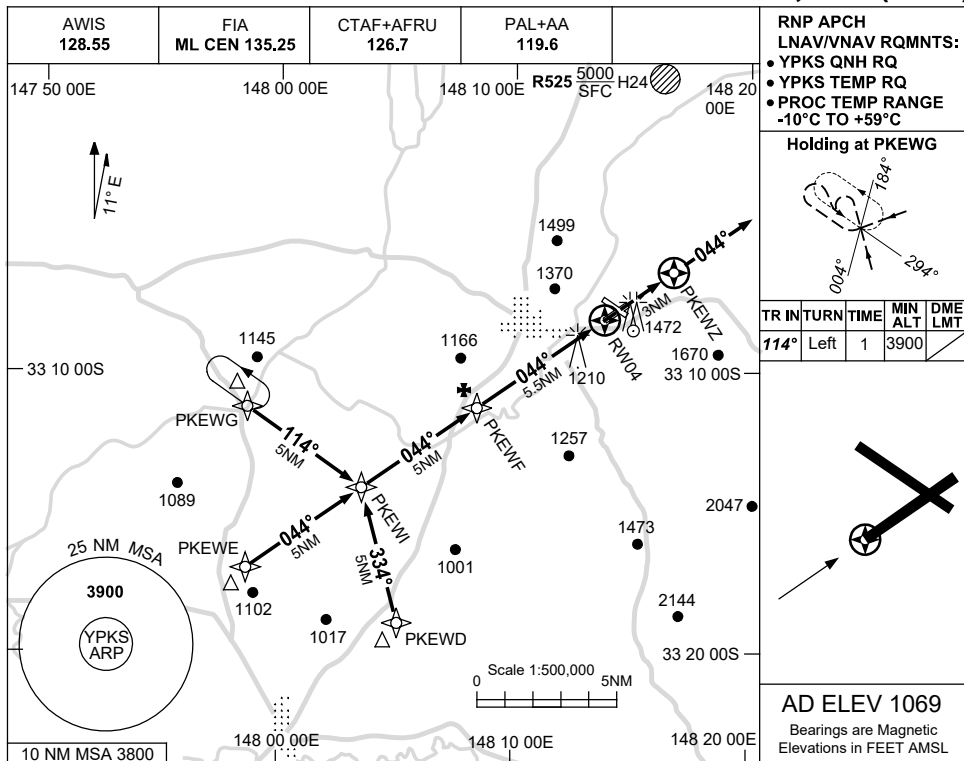
Changes: MINIMA, DIST/ALT TABLE, PAL+AA.

PKSDG01-170

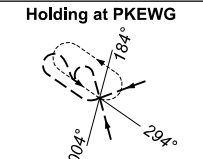
USE QNH

RNP RWY 04
PARKES, NSW (YPKS)

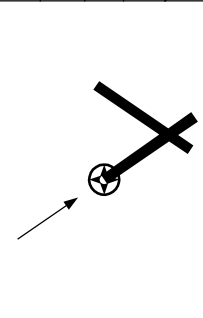
15 JUN 2023



RNP APCH
 LNAV/VNAV RQMNTS:
 • YPKS QNH RQ
 • YPKS TEMP RQ
 • PROC TEMP RANGE
 -10°C TO +59°C

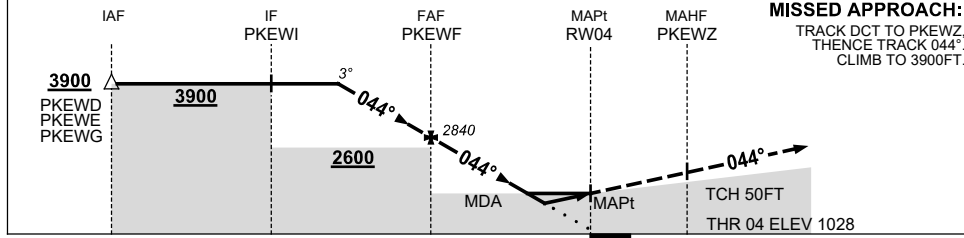


TR	IN	TURN	TIME	MIN ALT	DME LMT
114°	Left	1	3900		



AD ELEV 1069
 Bearings are Magnetic
 Elevations in FEET AMSL

NM TO NEXT WPT	3.3	3	2	1	PKEWF	4	3	2	1.8	1.1	RWY04		
ALT (3° APCH PATH)	3900	3800	3480	3160	2840	2350	2030	1720	1660	1440			



MISSED APPROACH:
 TRACK DCT TO PKEWZ,
 THENCE TRACK 044°,
 CLIMB TO 3900FT.

NOTES

CATEGORY	A	B	C	D
LNAV/VNAV		1440 (412-2.3)		NOT APPLICABLE
LNAV		1660 (632-3.6)		
CIRCLING	2070 (1001-2.4)		2370 (1301-4.0)	
ALTERNATE		(1501-4.4)	(1801-6.0)	

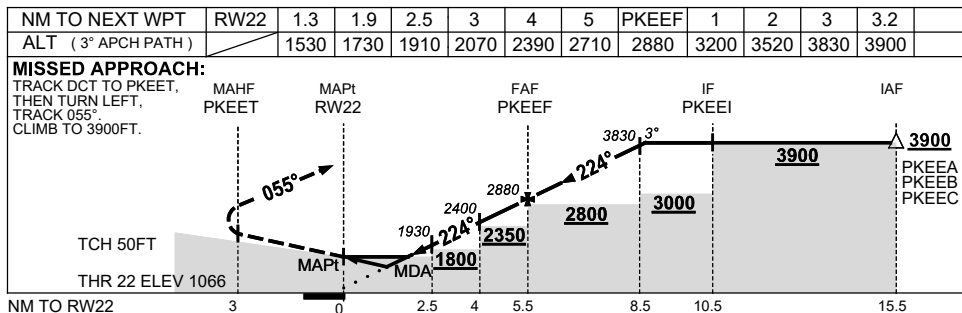
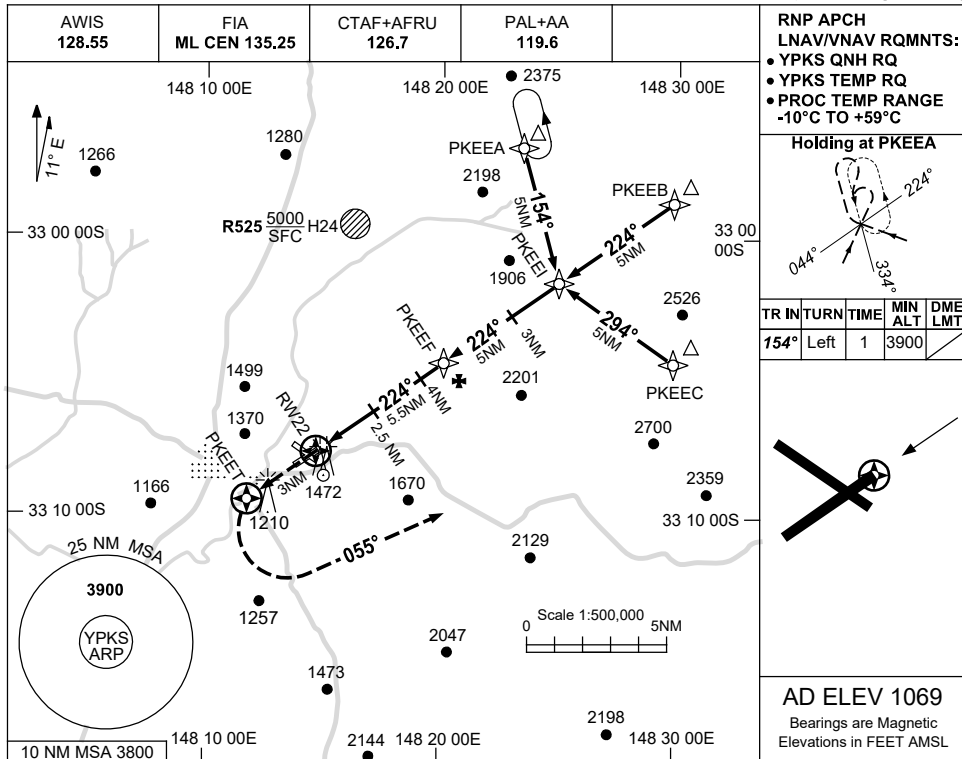
1. MAX IAS:
 INITIAL : 230KT.

Changes: CHART TITLE, PBN SPECIFICATION BOX, Editorial. PKSGN01-175

USE QNH

RNP RWY 22
PARKES, NSW (YPKS)

15 JUN 2023



NOTES

CATEGORY	A	B	C	D
LNAV/VNAV		1530 (464-2.6)		NOT APPLICABLE
LNAV		1730 (661-3.8)		
CIRCLING	2070 (1001-2.4)		2370 (1301-4.0)	
ALTERNATE		(1501-4.4)	(1801-6.0)	

1. MAX IAS:
 INITIAL : 230KT.

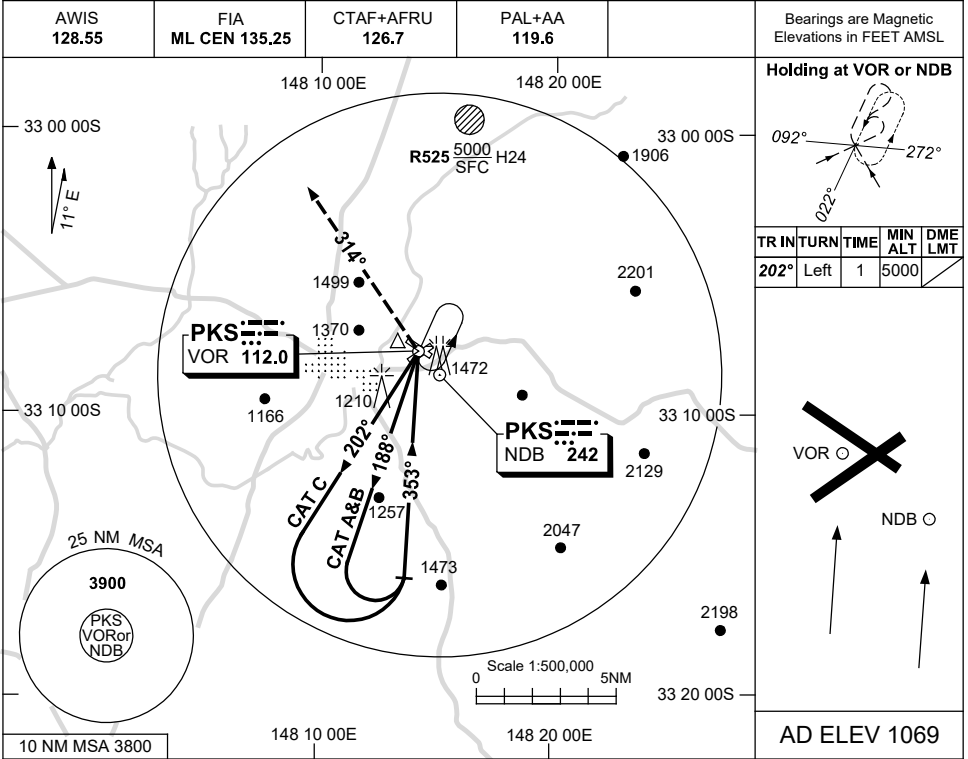
Changes: CHART TITLE, PBN SPECIFICATION BOX, Editorial.

PKSGN02-175

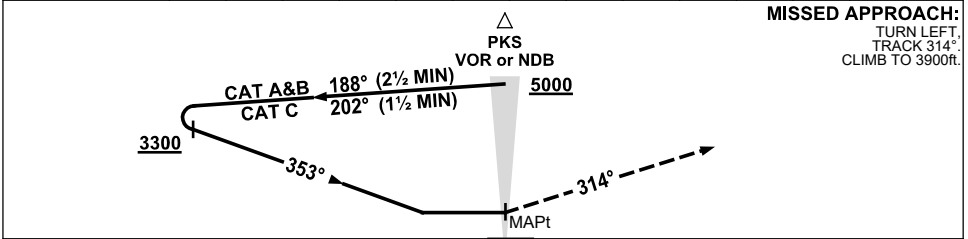
USE QNH

NDB-A or VOR-A
PARKES, NSW (YPKS)

21 MAR 2024



DME DIST	NOT APPLICABLE									
ALT										



NOTES

CATEGORY	A	B	C	D
				NOT APPLICABLE
CIRCLING	2070 (1001-2.4)		2370 (1301-4.0)	
ALTERNATE	(1501-4.4)		(1801-6.0)	

1. MAX IAS:
 INITIAL : 120KT.
 CAT A&B : 180KT.
 CAT C : 180KT.

Changes: REVISED PROC, Editorial.

PKSNB01-178