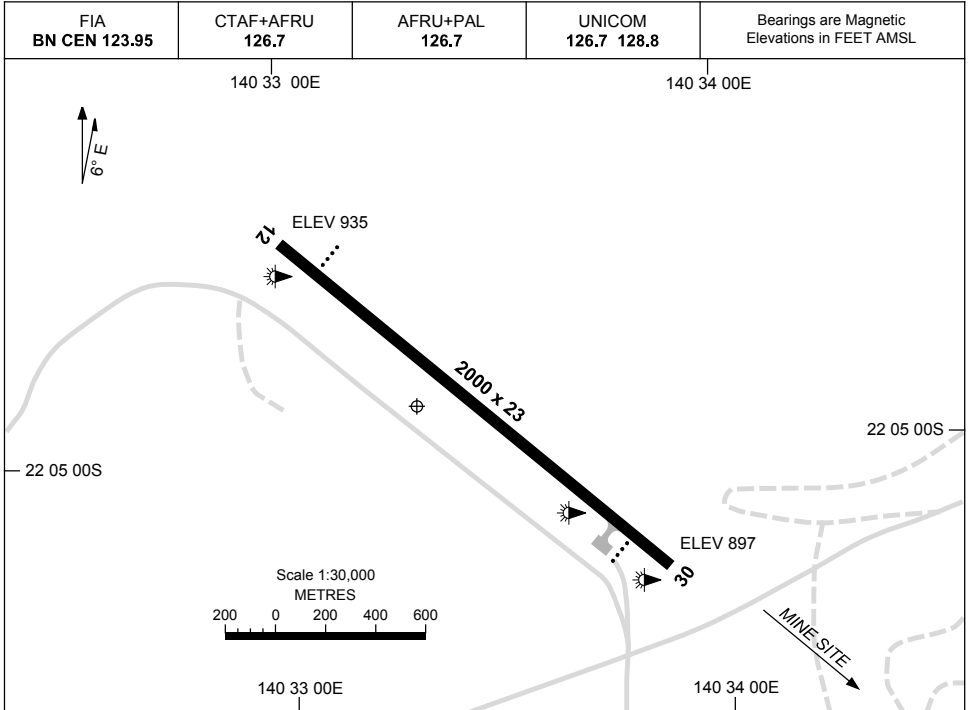


15 JUN 2023

AD ELEV 935  
22 04 54S 140 33 24E

AERODROME CHART  
**OSBORNE MINE, QLD (YOSB)**



	<b>AERODROME LIGHTING</b>
<b>RWY</b>	TAXIWAY : BLUE EDGE RL : AFRU+PAL 126.7 , SDBY (30 SEC) , PTBL (EMERG ONLY, 90 MIN PN. CTC AD MGR: 07 4748 0337/0307)
<b>12</b> <sup>126</sup>	PAPI 3.0° 45FT LIRL PTBL
<sup>306</sup> <b>30</b>	PAPI 3.0° 45FT LIRL PTBL

**NOTES**

1. ALL PILOTS ARE RQ TO BCST THEIR INTENTIONS INBOUND ON PRIMARY UNICOM FREQ 126.7. SECONDARY UNICOM FREQ 128.8

Changes: RWY BRG.

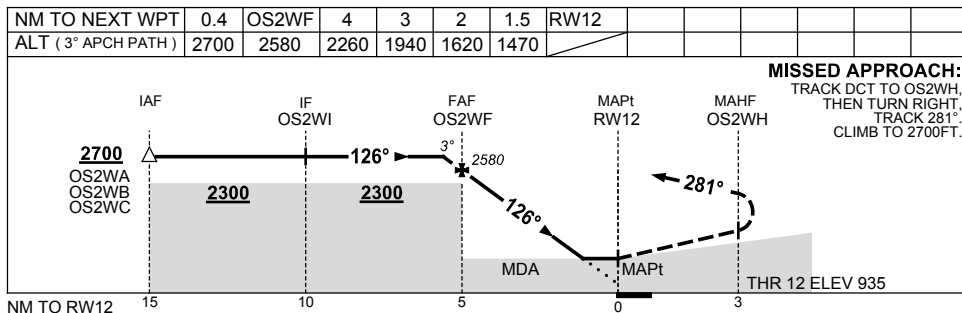
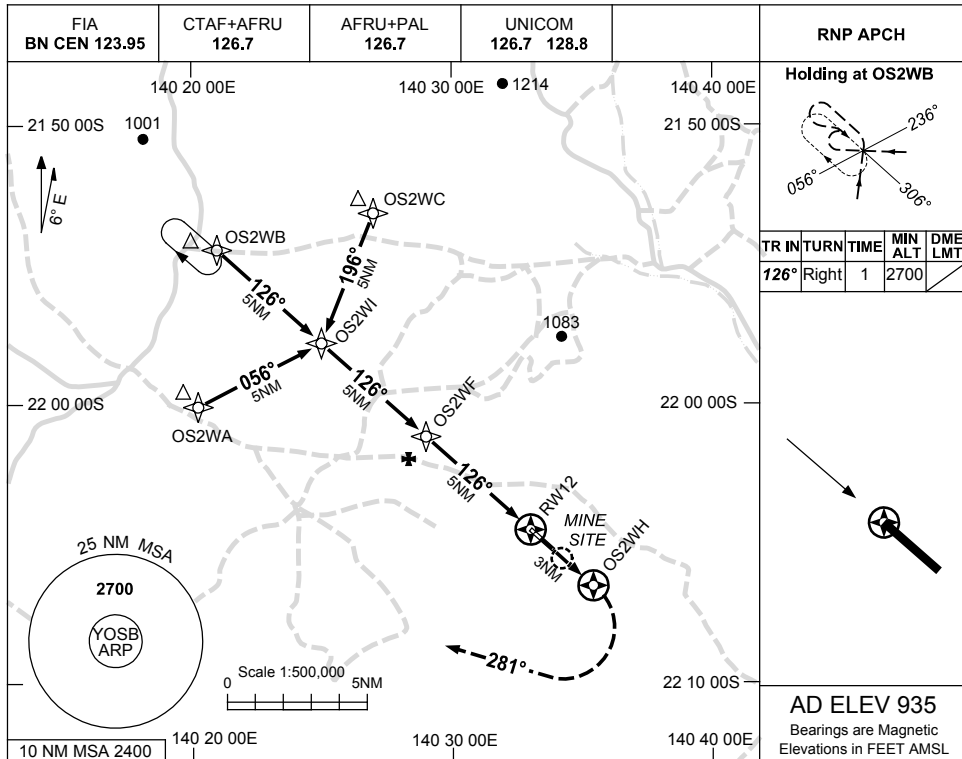
OSBAD01-175

USE QNH

RNP RWY 12

**OSBORNE MINE, QLD (YOSB)**

15 JUN 2023



**NOTES**

- MAX IAS:  
INITIAL : 210KT.

CATEGORY	A	B	C	D
LNAV	1470 (535-3.0)			NOT APPLICABLE
CIRCLING	1530 (595-2.4)	1680 (745-4.0)		
ALTERNATE	(1095-4.4)		(1245-6.0)	

Changes: MINIMA, MAG VAR, WPT NAMING CONVENTION.

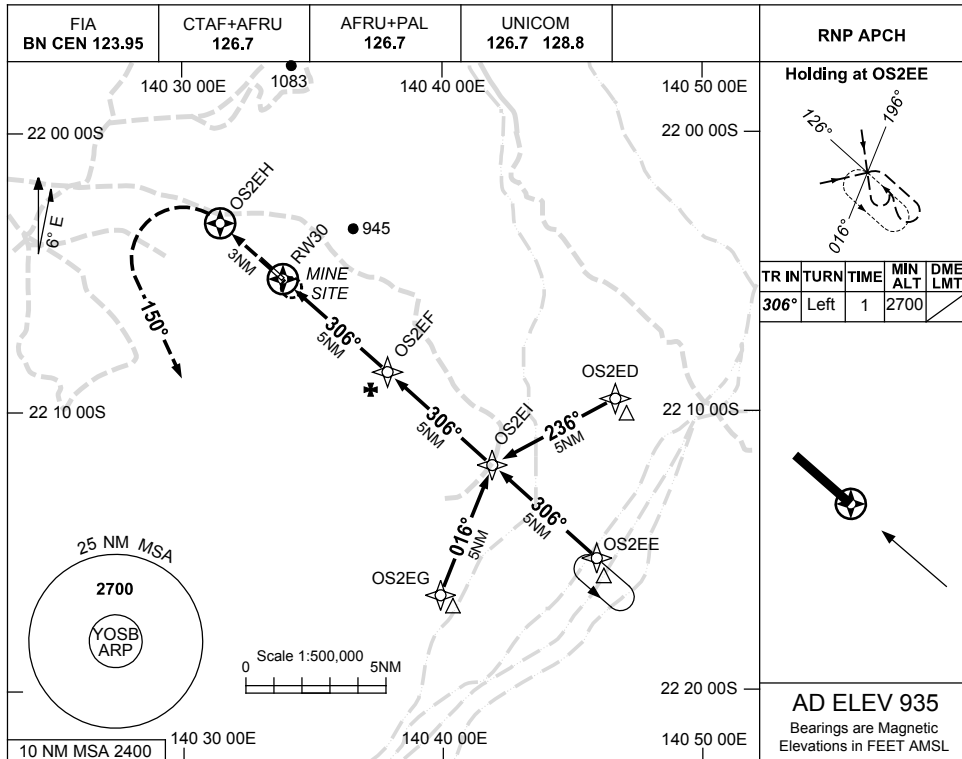
OSBGN01-175

USE QNH

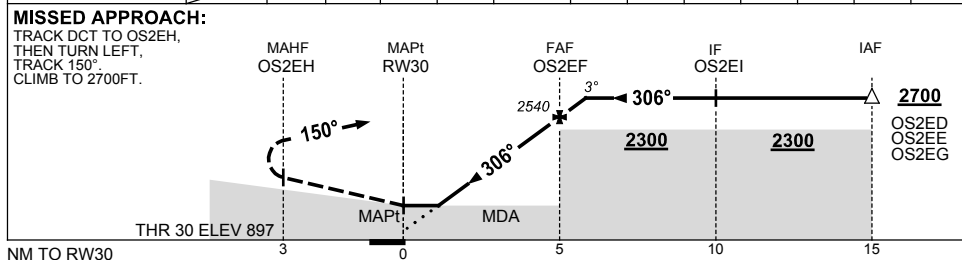
RNP RWY 30

**OSBORNE MINE, QLD (YOSB)**

15 JUN 2023



NM TO NEXT WPT	RW30	1.6	2	3	4	OS2EF	0.5						
ALT (3° APCH PATH)		1470	1580	1900	2220	2540	2700						



**NOTES**

1. MAX IAS:  
INITIAL : 210KT.

CATEGORY	A	B	C	D
LNAV	1470 (573-3.3)			NOT APPLICABLE
CIRCLING	1530 (595-2.4)	1680 (745-4.0)		
ALTERNATE	(1095-4.4)		(1245-6.0)	

Changes: MINIMA, MAG VAR, WPT NAMING CONVENTION.

OSBGN02-175