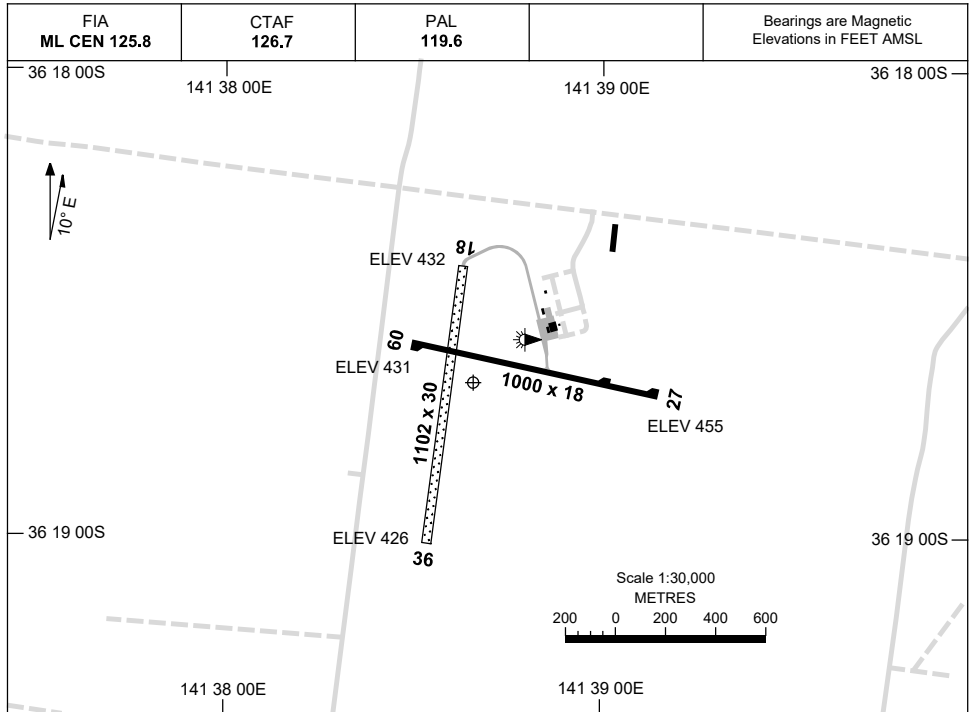


21 MAR 2024

AD ELEV 455
36 18 40S 141 38 40E

AERODROME CHART
NHILL, VIC (YNHL)



	AERODROME LIGHTING
RWY	TWY : BLUE EDGE RL : PAL 119.6 , PTBL IN EMERG
09 <small>093</small> 273 27	LIRL PTBL LIRL PTBL
18 <small>177</small> 357 36	RTIL PTBL RTIL PTBL

NOTES

1. AWIS (PHONE) 03 8470 3218
2. FIA FREQ 125.8 AVBL CIRCUIT AREA.
3. RWY 09/27 AND 18/36 PTBL LIGHTING AVBL DURING EMERG ONLY.

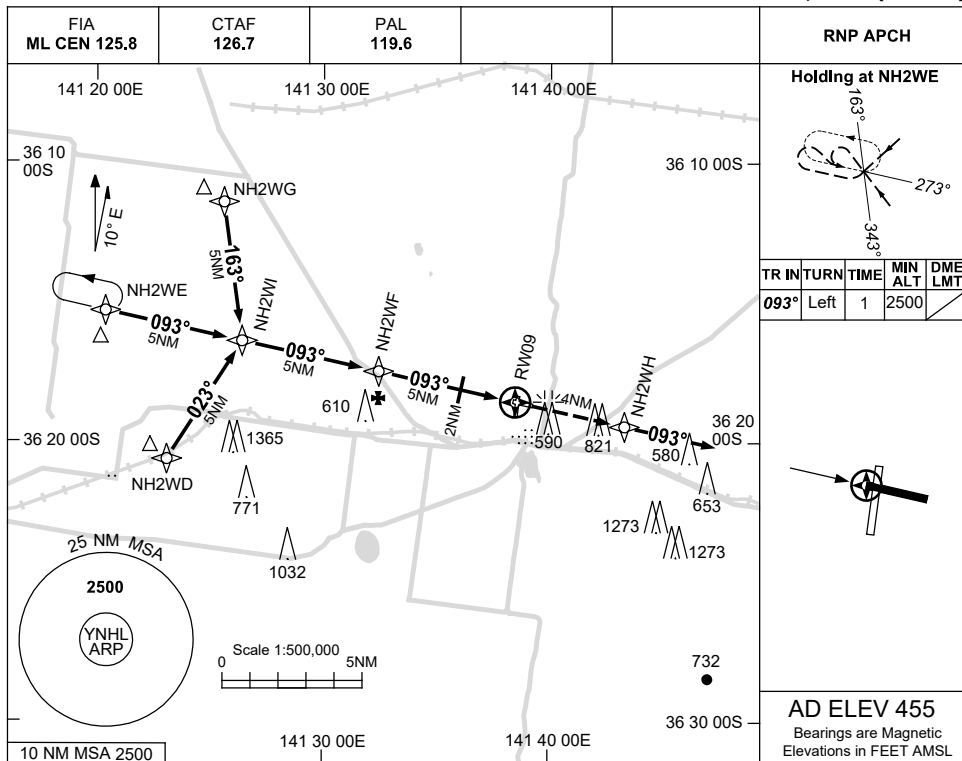
Changes: AD ELEV, THR ELEV, Editorial.

NHLAD01-178

USE QNH

RNP RWY 09
NHILL, VIC (YNHL)

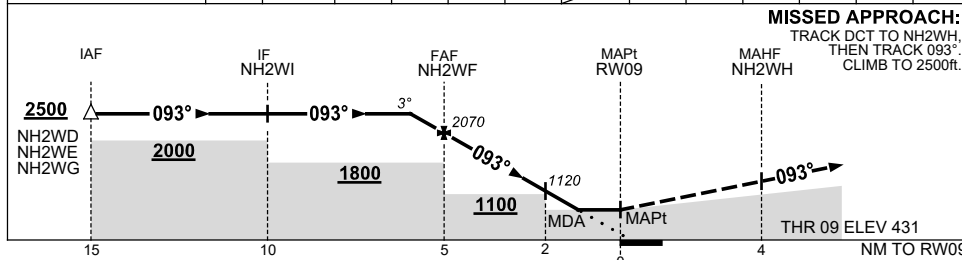
21 MAR 2024



TR IN	TURN	TIME	MIN ALT	DME LMT
093°	Left	1	2500	

AD ELEV 455
Bearings are Magnetic
Elevations in FEET AMSL

NM TO NEXT WPT	1.3	NH2WF	4	3	2	1.4	RW09
ALT (3° APCH PATH)	2500	2070	1750	1440	1120	940	



MISSED APPROACH:
TRACK DCT TO NH2WH,
THEN TRACK 093°.
CLIMB TO 2500ft.

NOTES

CATEGORY	A	B	C	D
LNAV	940 (509-2.9)			NOT APPLICABLE
CIRCLING	1220 (765-2.4)		1320 (865-4.0)	
ALTERNATE	(1265-4.4)		(1365-6.0)	

- MAX IAS: INITIAL : 210KT.
- AWIS (PHONE) 03 8470 3218

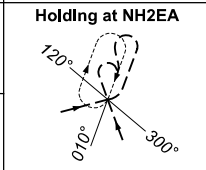
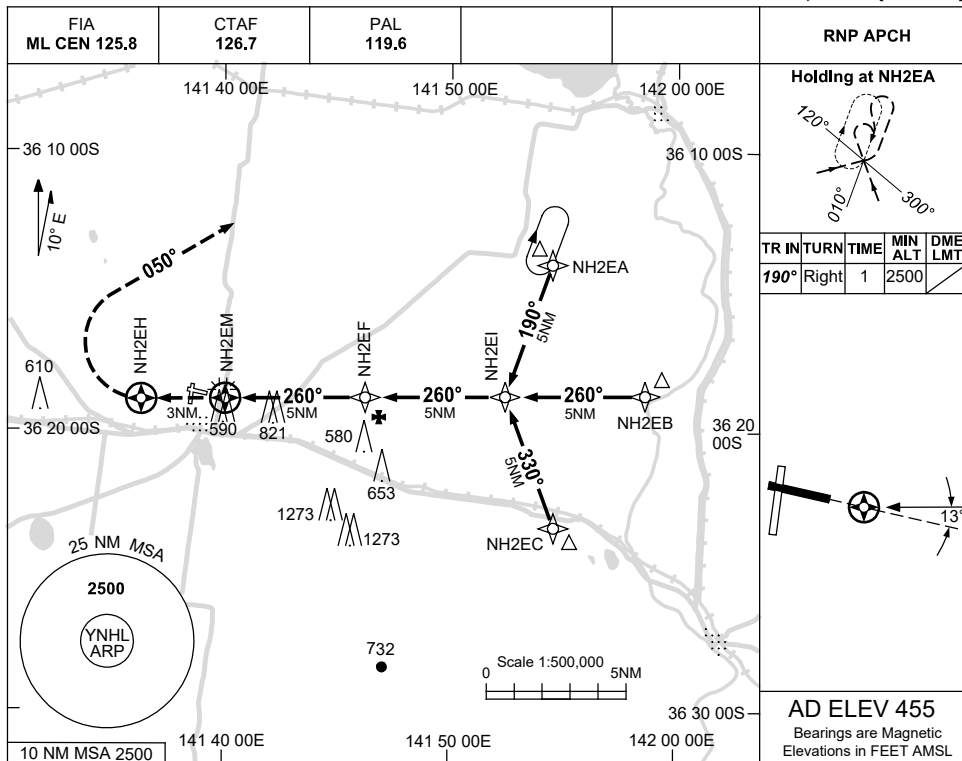
Changes: THR ELEV, MINIMA, FINAL SEGMENT MINIMUM ALT, WPT NAMING CONVENTION, Editorial.

NHLGN01-178

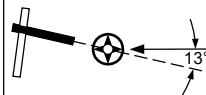
USE QNH

RNP RWY 27
NHILL, VIC (YNHL)

21 MAR 2024

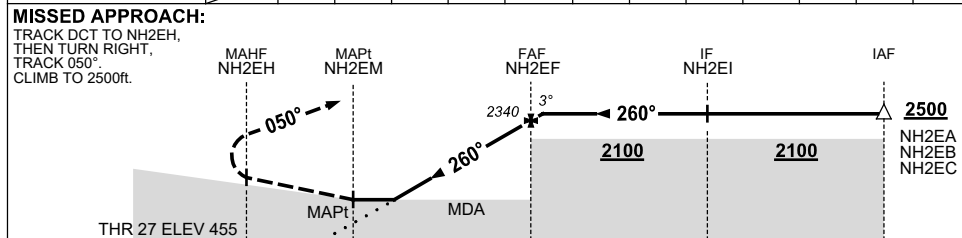


TR	IN	TURN	TIME	MIN	DME
				ALT	LMT
190°	Right	1		2500	



AD ELEV 455
Bearings are Magnetic
Elevations in FEET AMSL

NM TO NEXT WPT	NH2EM	1	2	3	4	NH2EF	0.5			
ALT (3° APCH PATH)		1070	1380	1700	2020	2340	2500			



NOTES

- MAX IAS: INITIAL : 210KT.
- AWIS (PHONE) 03 8470 3218

CATEGORY	A	B	C	D
LNAV	1070 (615-3.5)			NOT APPLICABLE
CIRCLING	1220 (765-2.4)		1320 (865-4.0)	
ALTERNATE	(1265-4.4)		(1365-6.0)	

Changes: THR ELEV, MINIMA, DIST/ALT TABLE, WPT NAMING CONVENTION, Editorial.

NHLGN02-178