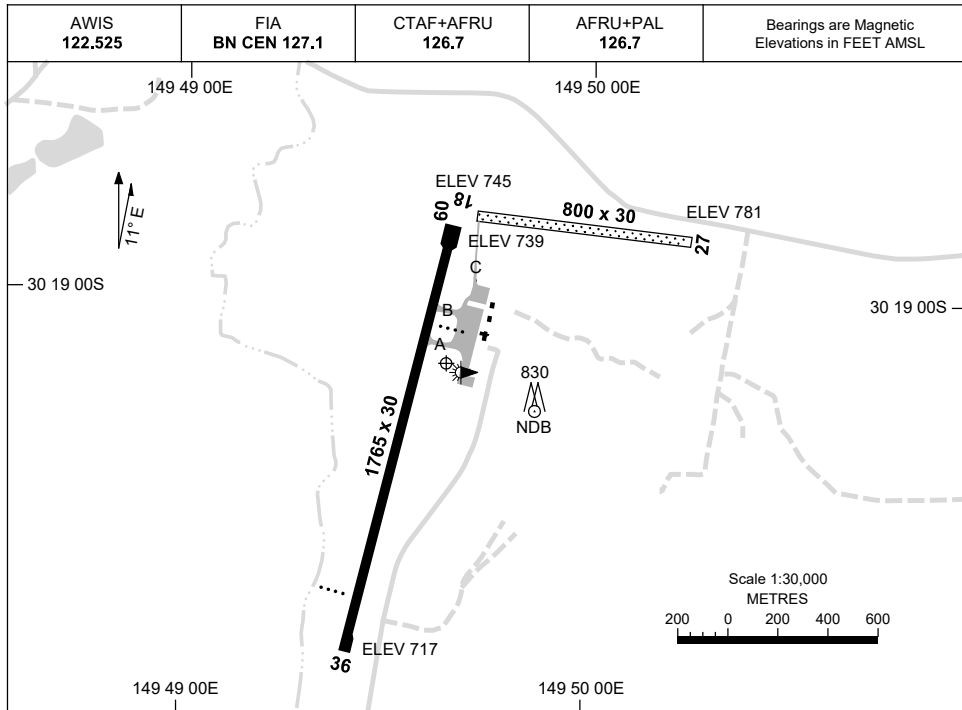


07 SEP 2023

AD ELEV 782  
30 19 09S 149 49 38E

AERODROME CHART  
**NARRABRI, NSW (YNBR)**



	<b>AERODROME LIGHTING</b>	
<b>RWY</b>	TAXIWAY : BLUE EDGE TWY A & B RL : AFRU+PAL 126.7, SDBY (15 SEC)	
<b>18</b> <sup>182</sup> <b>002 36</b>	PAPI 3.0° 30FT LIRL	
<b>09</b> <sup>085</sup> <b>265 27</b>	NIL	

**NOTES**

1. AWIS REQUIRES 1 SECOND TRANSMIT PULSE TO ACTIVATE.

# GNSS ARRIVAL PROCEDURES NARRABRI, NSW (YNBR)

23 MAR 2023

AWIS 122.525	FIA BN CEN 127.1	CTAF+AFRU 126.7	AFRU+PAL 126.7		Bearings are Magnetic Elevations in FEET AMSL
-----------------	---------------------	--------------------	-------------------	--	--

25 NM MSA  
NBR NDB 5500  
B-215°  
B-275°

**REFERENCE WAYPOINT NBR NDB**

10 NM MSA 5600

AD ELEV 782

**SECTOR A**

**MISSED APPROACH:**  
CLIMB ON TRACK TO 5500FT.

NM TO NBR NDB	25	19	15	13	11	9	7	6	4	0						
<b>CIRCLING MINIMA</b>	A,B: 1650-2.4				C: 1680-4.0		D: N/A									
NM TO NBR NDB	16.5	15	13	12	11	10	9	8	7	6	5	4	3	2	1.3	1.2
ALT (3° APCH PATH)	6500	6040	5400	5080	4760	4440	4130	3810	3490	3170	2850	2530	2220	1900	1680	1650

**SECTOR B**

**MISSED APPROACH:**  
CLIMB ON TRACK TO 5500FT.

NM TO NBR NDB	25	18	15	13	10	8	6	5	4	0					
<b>CIRCLING MINIMA</b>	A,B: 1650-2.4				C: 1680-4.0		D: N/A								
NM TO NBR NDB	17.4	16	15	13	11	10	9	8	7	6	5	4	3	2.3	2.2
ALT (3° APCH PATH)	6500	6050	5730	5090	4460	4140	3820	3500	3180	2870	2550	2230	1910	1680	1650

**SECTOR C**

**MISSED APPROACH:**  
TURN AS APPROPRIATE, TRACK 280°. CLIMB TO 5500FT.

NM TO NBR NDB	25	16	15	8	5	4	0								
<b>CIRCLING MINIMA</b>	A,B: 1650-2.4				C: 1680-4.0		D: N/A								
NM TO NBR NDB	14.7	14	13	12	11	10	9	8	7	6	5	4	3	2.7	2.6
ALT (3° APCH PATH)	5500	5260	4950	4630	4310	3990	3670	3350	3040	2720	2400	2080	1760	1680	1650

Changes: AD ELEV, RWY 09/27.

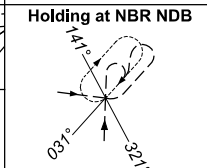
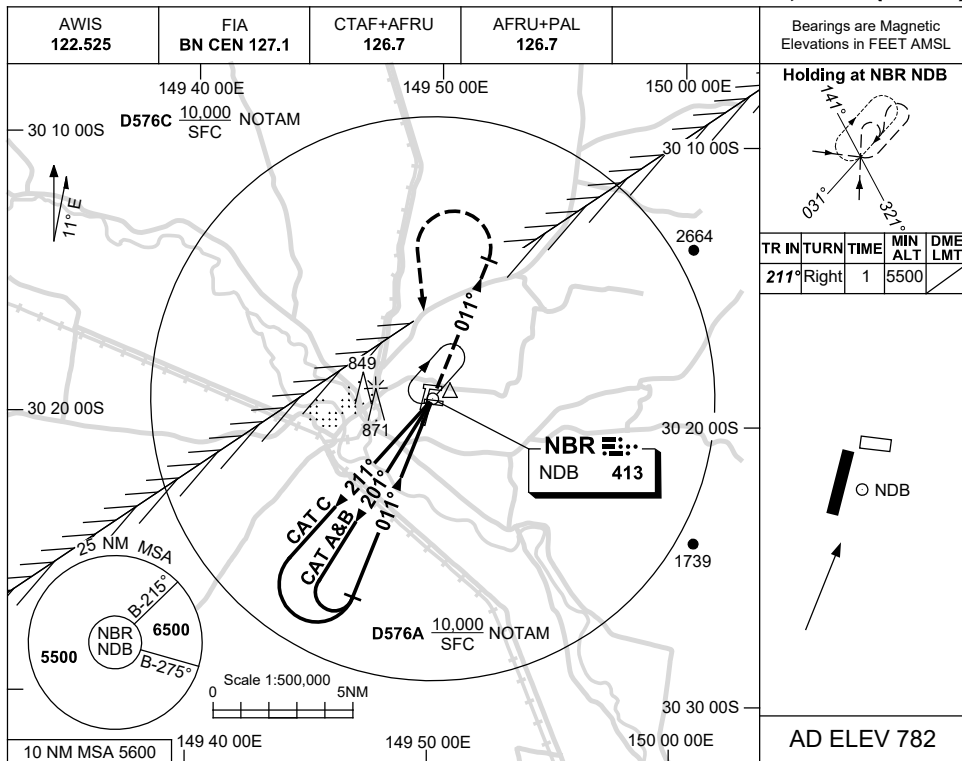
NBRDG01-174



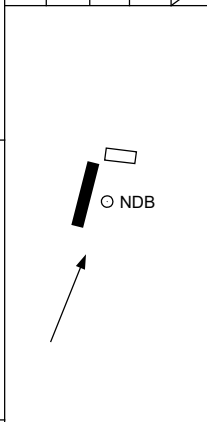
USE QNH

NDB RWY 36  
NARRABRI, NSW (YNBR)

21 MAR 2024

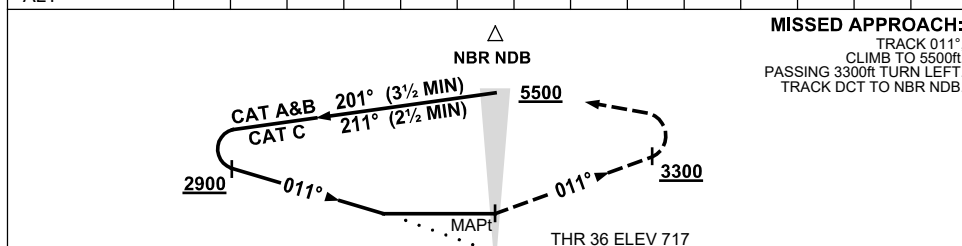


TR	IN	TURN	TIME	MIN	DME
				ALT	LMT
211°	Right		1	5500	



AD ELEV 782

DME DIST	NOT APPLICABLE									
ALT										



**NOTES**

CATEGORY	A	B	C	D
S-I NDB	1630 (913-5.0)			NOT APPLICABLE
CIRCLING	1650 (868-2.4)	1680 (898-4.0)		
ALTERNATE	(1368-4.4)		(1398-6.0)	

1. MAX IAS:  
INITIAL :  
CAT C : 210KT.

Changes: D576A & C ADDED, Editorial.

NBRNB01-178