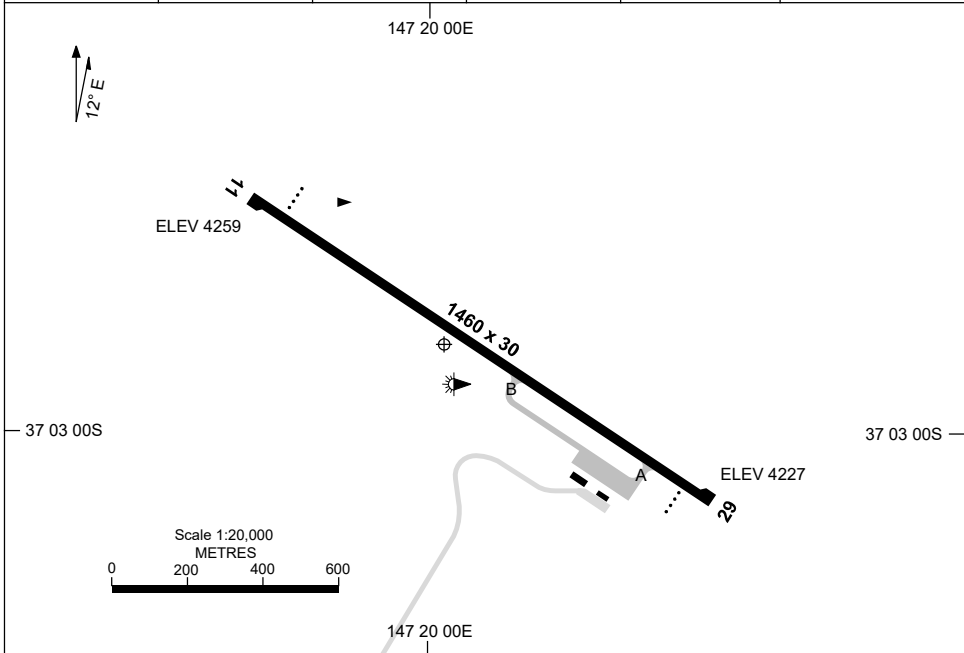


21 MAR 2024

AD ELEV 4260
37 02 54S 147 20 03E

AERODROME CHART
MOUNT HOTHAM, VIC (YHOT)

AWIS 128.05	FIA ML CEN 125.2	CTAF+AFRU 126.75	APP ESL 123.3		Bearings are Magnetic Elevations in FEET AMSL
----------------	---------------------	---------------------	------------------	--	--



RWY	AERODROME LIGHTING	
	TAXIWAY : BLUE EDGE RL : MANUAL , SDBY (15 SEC)	
11 ¹¹¹	PAPI 3.9° 42FT LIRL RTIL (PN)	
²⁹¹ 29	PAPI 3.0° 41FT LIRL RTIL (PN)	

NOTES

1. AWIS REQUIRES 1 SECOND TRANSMIT PULSE TO ACTIVATE.
2. FIA FREQ 125.2 AVBL 6,500ft.

Changes: TWY, Editorial.

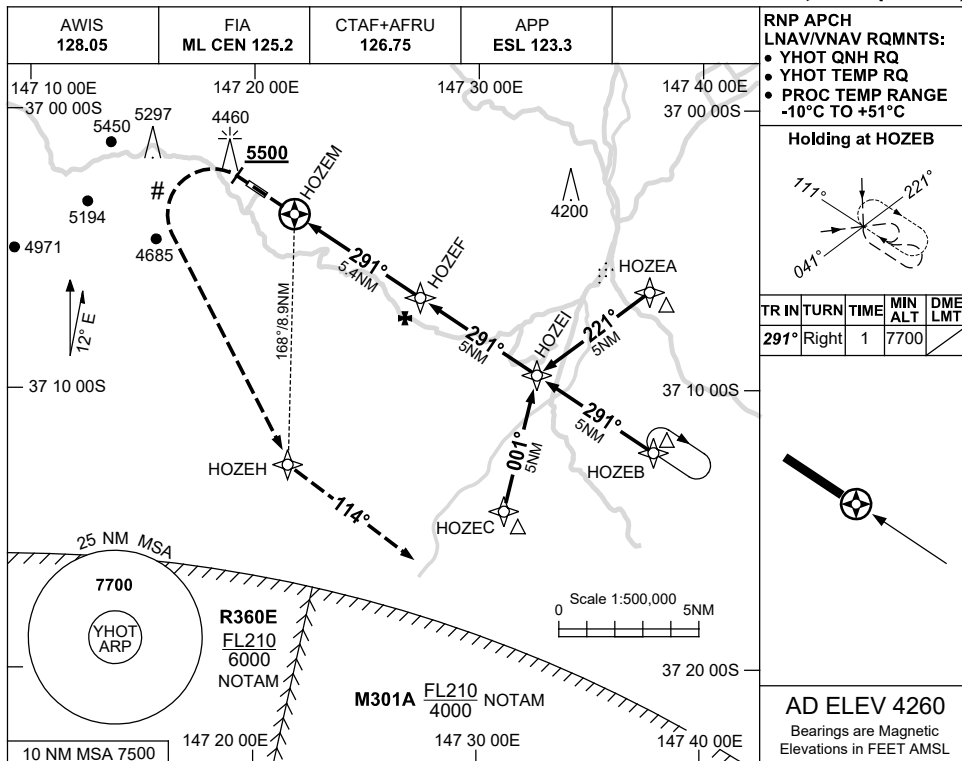
HOTAD01-178

USE QNH

RNP RWY 29

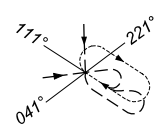
30 NOV 2023

MOUNT HOTHAM, VIC (YHOT)

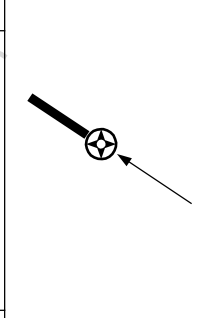


RNP APCH
LNAV/VNAV RQMNTS:
• YHOT QNH RQ
• YHOT TEMP RQ
• PROC TEMP RANGE
-10°C TO +51°C

Holding at HOZEB



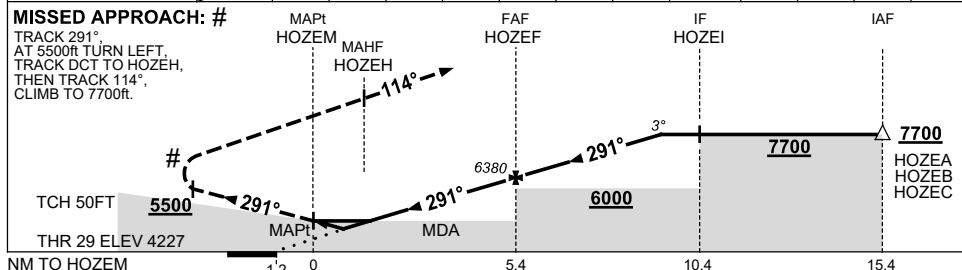
TR IN	TURN	TIME	MIN ALT	DME LMT
291°	Right	1	7700	



AD ELEV 4260

Bearings are Magnetic
Elevations in FEET AMSL

NM TO NEXT WPT	HOZEM	0.1	0.4	0.7	1	2	3	4	HOZEF	1	2	3	4.1
ALT (3° APCH PATH)		4700	4800	4890	4990	5300	5620	5940	6380	6700	7020	7330	7700



CATEGORY	A		B		C		D
	Alt	Dist	Alt	Dist	Alt	Dist	
LNAV/VNAV (2.5% MAP)	4890	(663-3.8)	4890	(663-3.8)	5880	(1620-4.0)	NOT APPLICABLE
LNAV/VNAV # (3.3% MAP)	4700	(473-2.7)	4700	(473-2.7)	5880	(1620-4.0)	
LNAV (2.5% MAP)	4990	(763-4.4)	4990	(763-4.4)	5880	(1620-4.0)	
LNAV # (3.3% MAP)	4800	(573-3.3)	4800	(573-3.3)	5880	(1620-4.0)	
CIRCLING	5450	(1190-2.4)	5880	(1620-4.0)	5880	(1620-4.0)	
ALTERNATE		(1690-4.4)		(2120-6.0)		(2120-6.0)	

- NOTES**
- MAX IAS:
INITIAL : 210KT
MAP TURN: 210KT.
 - MIN MAP GRAD 3.3%
TO 5500FT, THEN 2.5%.
 - HLDG NOT AVBL WHEN
M301A ACTIVE.

Changes: R359E/F DELETED, R360E, M301A, Editorial.

HOTGN01-177