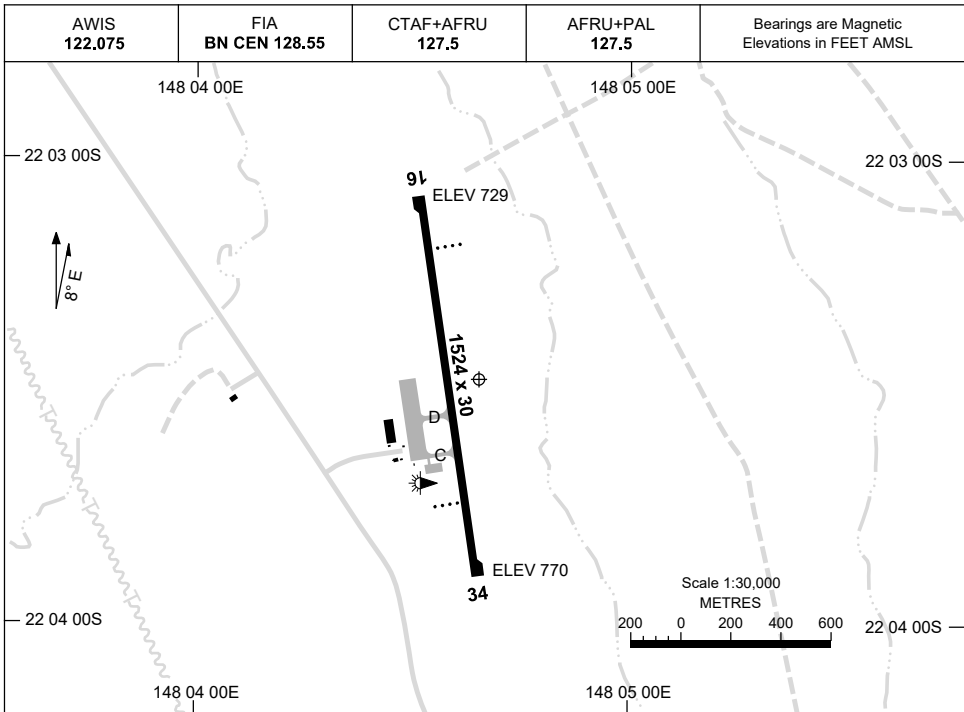


30 NOV 2023

AD ELEV 770  
22 03 28S 148 04 39E

AERODROME CHART  
**MORANBAH, QLD (YMRB)**



<b>RWY</b>	<b>AERODROME LIGHTING</b>
	RL : AFRU+PAL 127.5 , SDBY
<b>16</b> <sup>163</sup>	PAPI 3.0° 48FT LIRL RTIL
<sup>343</sup> <b>34</b>	PAPI 3.0° 48FT LIRL RTIL

**NOTES**

1. AWIS RQ 1 SEC PULSE TO ACTIVATE.
2. FIA FREQ 128.55 AVBL CIRCUIT AREA.  
FOR ON GROUND COM USE BN CEN 118.45.

Changes: SWITCHOVER TIME REMOVED, PAPI HEIGHT, Editorial.

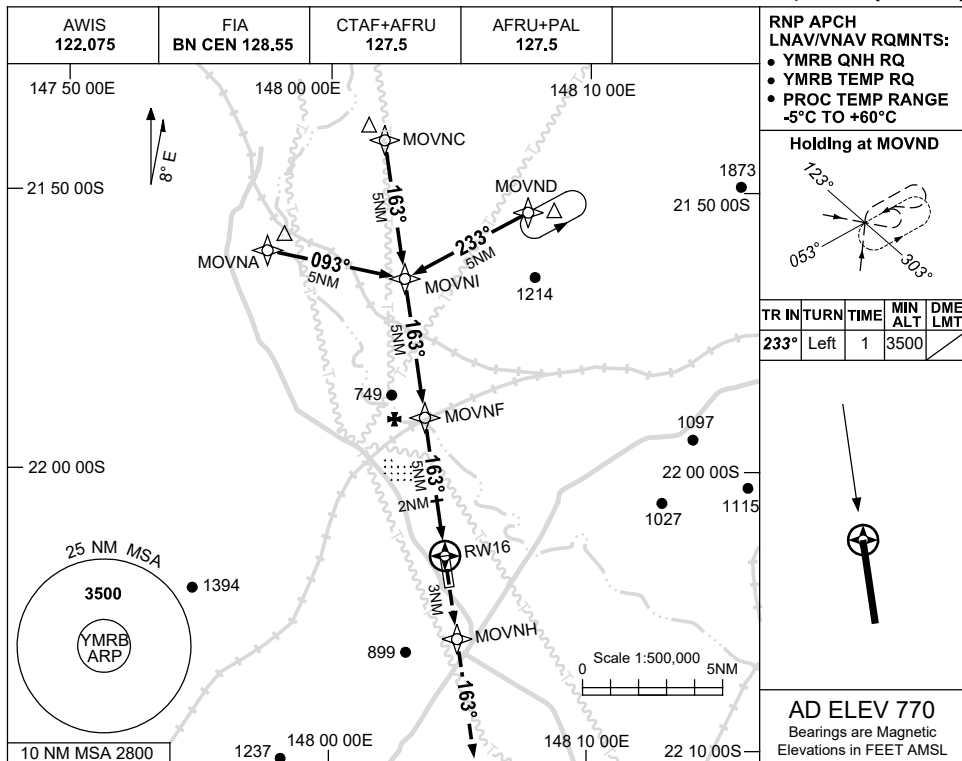
MRBAD01-177

USE QNH

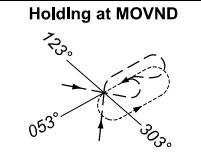
RNP RWY 16

24 MAR 2022

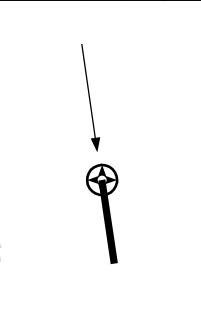
MORANBAH, QLD (YMRB)



RNP APCH  
LNAV/VNAV RQMNTS:  
• YMRB QNH RQ  
• YMRB TEMP RQ  
• PROC TEMP RANGE  
-5°C TO +60°C

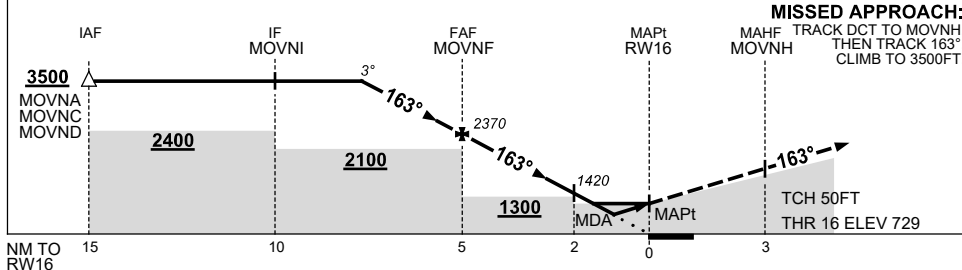


TR	TURN	TIME	MIN ALT	DME LMT
233°	Left	1	3500	



**AD ELEV 770**  
Bearings are Magnetic  
Elevations in FEET AMSL

NM TO NEXT WPT	3.6	3	2	1	MOVNF	4	3	2	1.5	0.9	RW16		
ALT (3° APCH PATH)	3500	3330	3010	2690	2370	2050	1730	1420	1250	1060			



**MISSED APPROACH:**  
TRACK DCT TO MOVNH.  
THEN TRACK 163°. CLIMB TO 3500FT.

TCH 50FT  
THR 16 ELEV 729

**NOTES**

- MAX IAS:  
INITIAL : 210KT.
- BLASTING OPS  
WITHIN 5NM OF AD.

CATEGORY	A	B	C	D
LNAV/VNAV		1060 (331-1.8)		NOT APPLICABLE
LNAV		1250 (521-2.9)		
CIRCLING	1580 (810-2.4)		1680 (910-4.0)	
ALTERNATE	(1310-4.4)		(1410-6.0)	

Changes: CHART TITLE, PBN SPECIFICATION BOX.

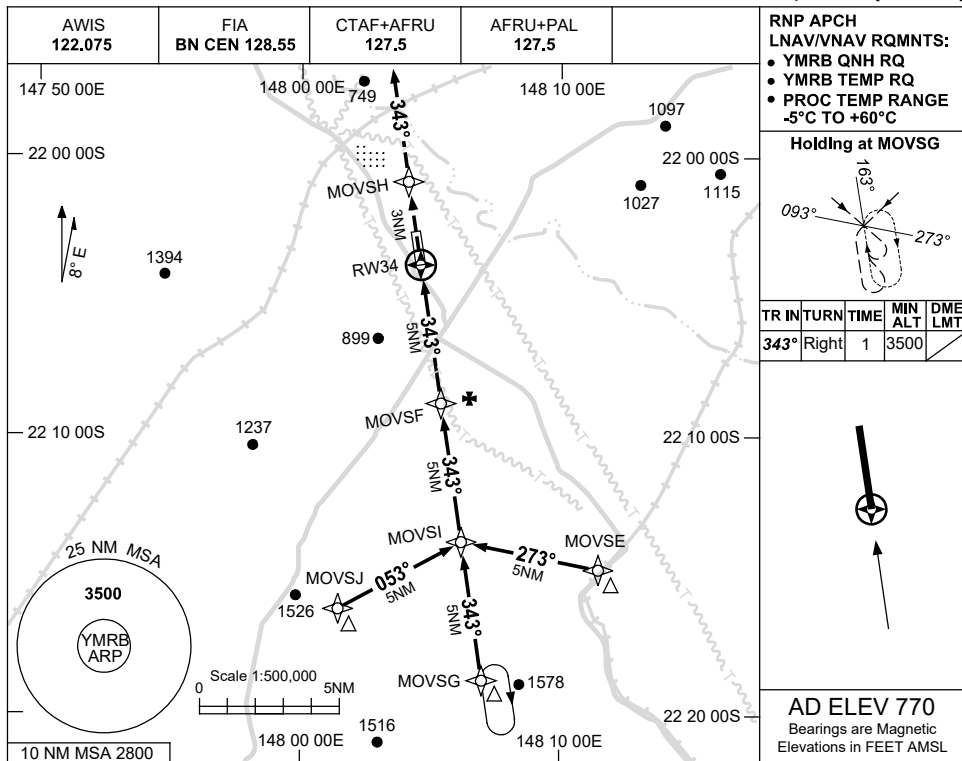
MRBGN01-170

USE QNH

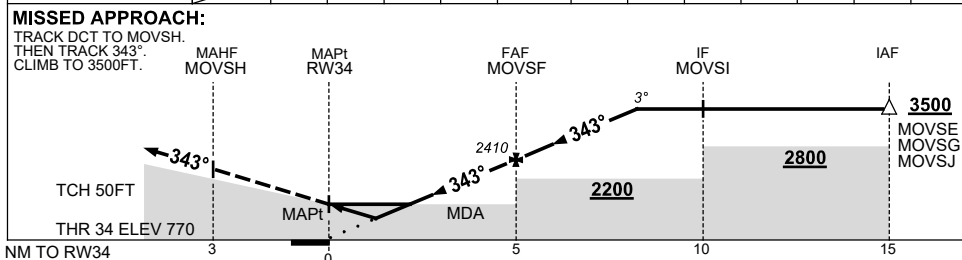
RNP RWY 34

24 MAR 2022

MORANBAH, QLD (YMRB)



NM TO NEXT WPT	RW34	0.9	1.9	3	4	MOVSF	1	2	3	3.5			
ALT (3° APCH PATH)		1120	1440	1780	2090	2410	2730	3050	3370	3500			



**NOTES**

CATEGORY	A	B	C	D
LNAV/VNAV		<b>1120</b> (350-2.0)		<b>NOT APPLICABLE</b>
LNAV		<b>1440</b> (670-3.8)		
CIRCLING	<b>1580</b> (810-2.4)		<b>1680</b> (910-4.0)	
ALTERNATE	(1310-4.4)		(1410-6.0)	

1. MAX IAS:  
INITIAL : 210KT.
2. BLASTING OPS  
WITHIN 5NM OF AD.

Changes: CHART TITLE, PBN SPECIFICATION BOX.

MRBGN02-170