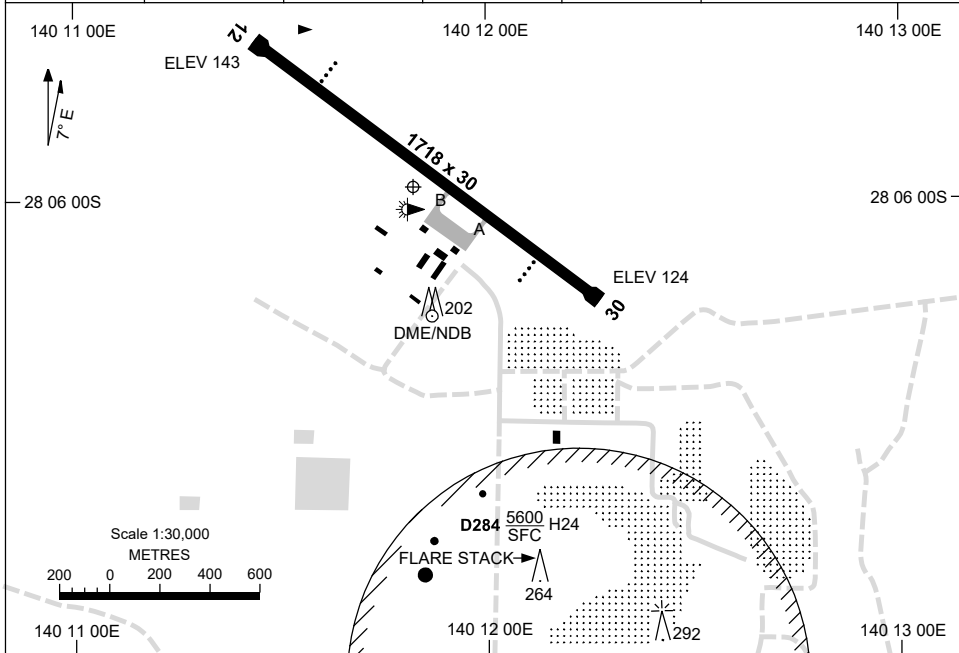


30 NOV 2023

AD ELEV 143
28 05 58S 140 11 49E

AERODROME CHART
MOOMBA, SA (YOOM)

AWIS 128.55	FIA ML CEN 119.5	CTAF+AFRU 126.7	PAL+AA 120.6	Bearings are Magnetic Elevations in FEET AMSL
----------------	---------------------	--------------------	-----------------	--



AERODROME LIGHTING

RWY	TAXIWAY : BLUE EDGE (TWY A & B) RL : PAL+AA 120.6 , SDBY (9 SEC) , PTBL (EMERG ONLY, 60MIN PN)
------------	---

12 ¹²⁰	PAPI 3.0° 52FT LIRL
³⁰⁰ 30	PAPI 3.0° 52FT LIRL

--	--

NOTES

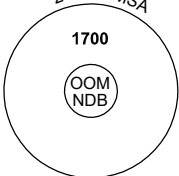
1. ALL OPS - ADVISE ADO 20MIN PN ON 126.4.

DME or GNSS ARRIVAL PROCEDURES MOOMBA, SA (YOOM)

30 NOV 2023

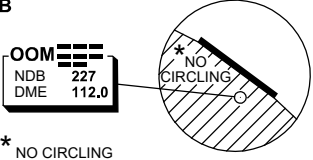
AWIS 128.55	FIA ML CEN 119.5	CTAF+AFRU 126.7	PAL+AA 120.6		Bearings are Magnetic Elevations in FEET AMSL
----------------	---------------------	--------------------	-----------------	--	--

25 NM MSA



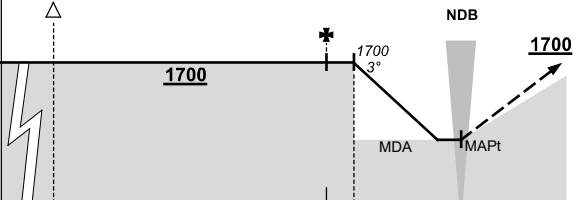
10 NM MSA 1500

**DME USING OOM DME
REFERENCE WAYPOINT OOM NDB**



* NO CIRCLING
SOUTH OF
RWY 12/30.

AD ELEV 143

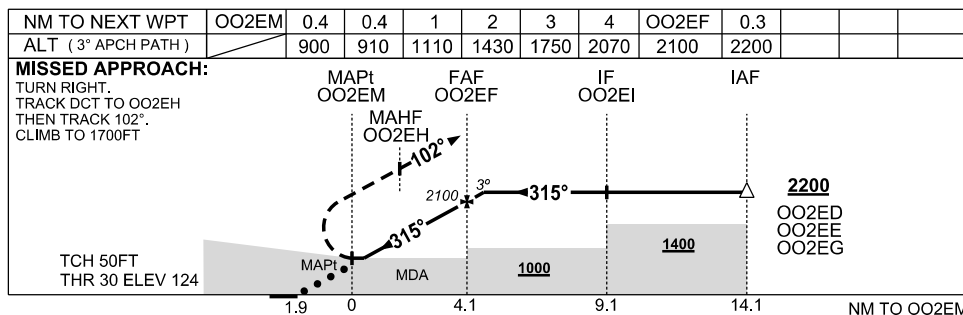
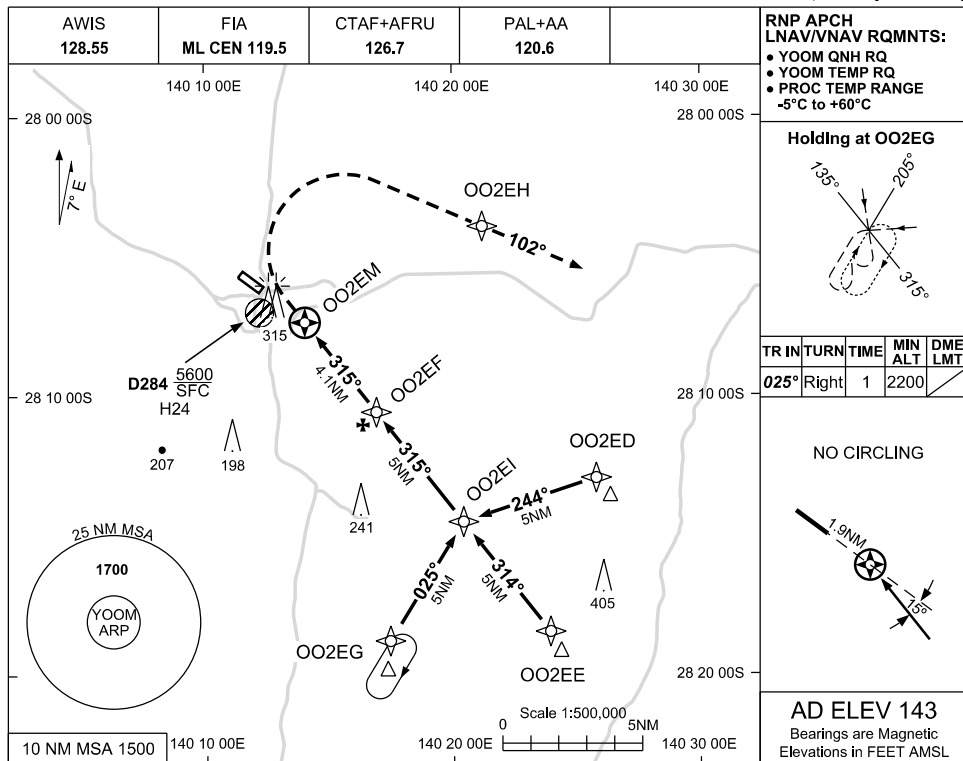
ALL ROUTES TO OOM NDB											<p>MISSED APPROACH: CLIMB ON TRACK TO 1700FT.</p> <p>CAUTION: PROCEDURE DOES NOT REMAIN CLEAR OF D284.</p>									
	NM TO OOM NDB	25	15	5	4	0														
CIRCLING MINIMA				A,B: 740-2.4	C: 840-4.0	D: N/A														
NM TO OOM NDB	4	3	2	1.3	1															
ALT (3° APCH PATH)	1700	1380	1060	840	740															

Changes: UNICOM REMOVED.

USE QNH

RNP RWY 30
MOOMBA, SA (YOOM)

30 NOV 2023



NOTES

CATEGORY	A	B	C	D
LNAV/VNAV		910 (786-4.5)		NOT AUTHORISED
LNAV		900 (776-4.4)		
CIRCLING	NOT AUTHORISED		NOT AUTHORISED	
ALTERNATE	(1097-4.4)		(1197-6.0)	

1. MAX IAS:
INITIAL : 210KT
MAP TURN: 210KT

Changes: UNICOM REMOVED, EDITORIAL.

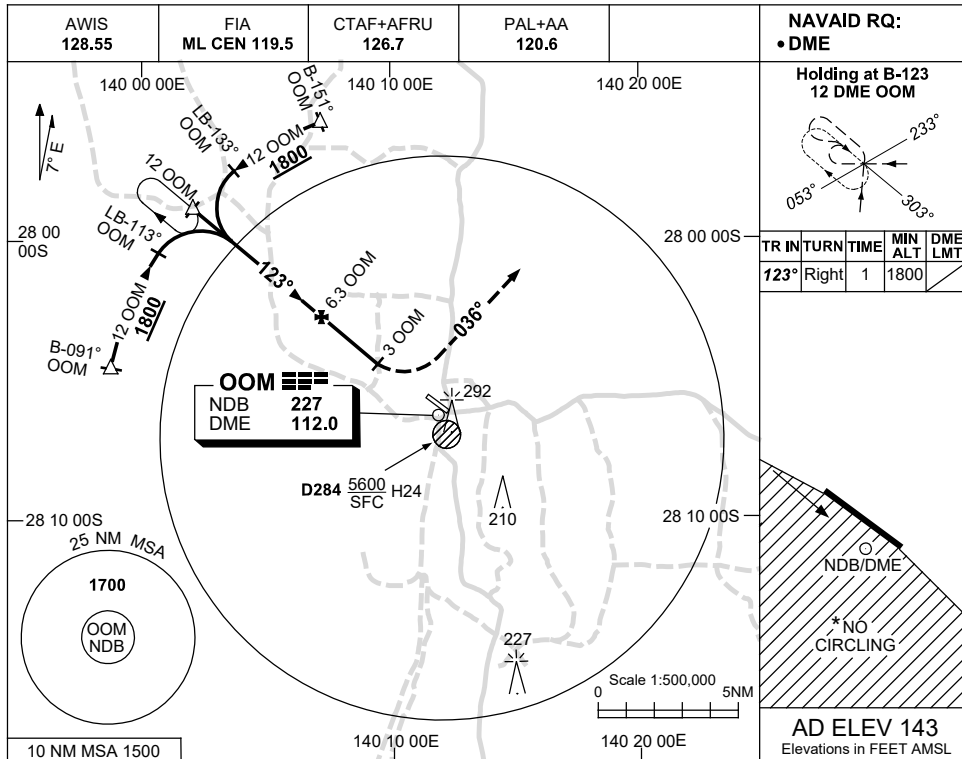
OOMGN02-177

USE QNH

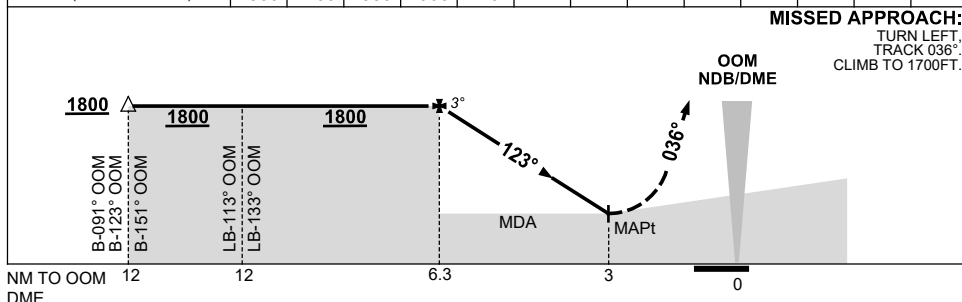
NDB-A

30 NOV 2023

MOOMBA, SA (YOOM)



NM TO OOM DME	6.3	6	5	4	3								
ALT (3° APCH PATH)	1800	1700	1380	1060	740								



NOTES

CATEGORY	A	B	C	D
			NOT APPLICABLE	
CIRCLING *	740 (597-5.6)			
ALTERNATE	(1097-7.6)			

1. MAX IAS:
MAP TURN: 140KT.

*2. NO CIRCLING STH OF RWY 12/30.

Changes: UNICOM REMOVED, Editorial.

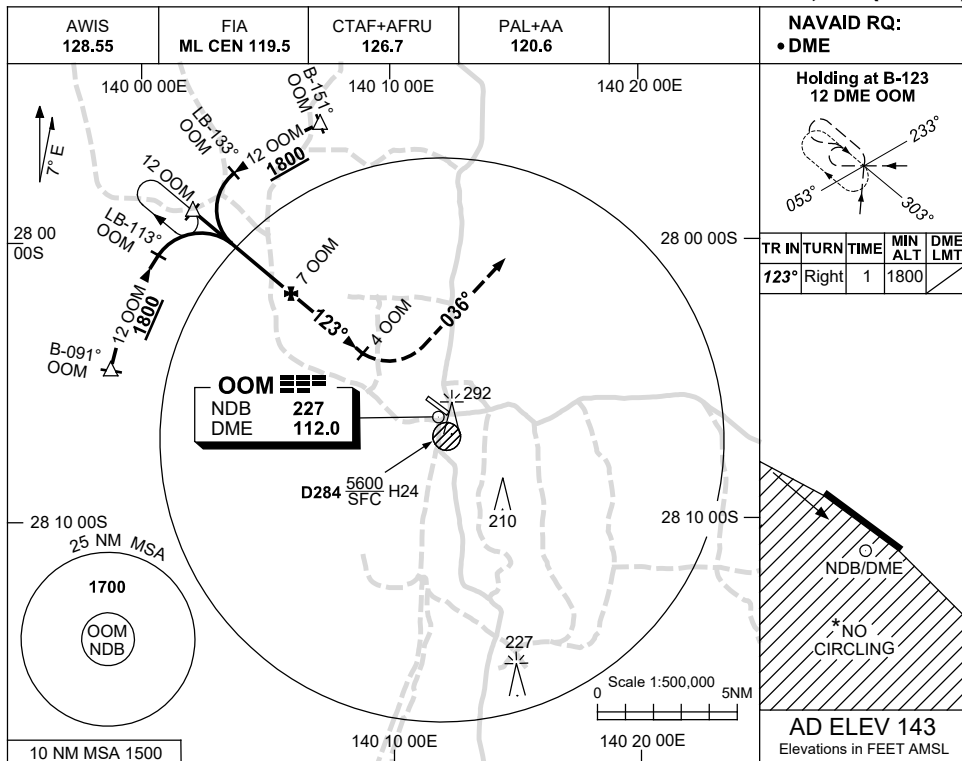
OOMNB01-177

USE QNH

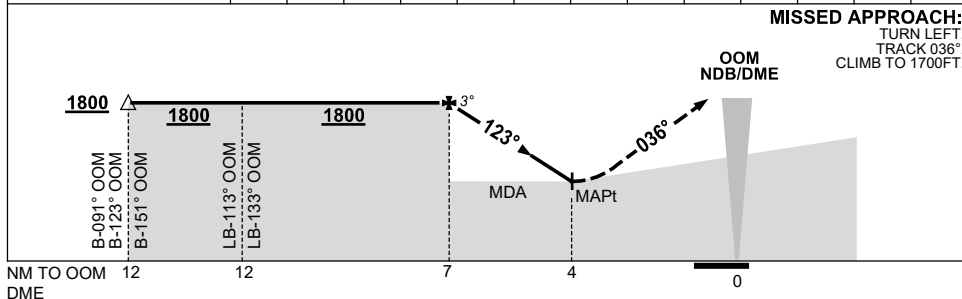
NDB-B

30 NOV 2023

MOOMBA, SA (YOOM)



NM TO OOM DME	7	6	5	4									
ALT (3° APCH PATH)	1800	1480	1160	840									



NOTES

CATEGORY	A	B	C	D
	NOT APPLICABLE			NOT APPLICABLE
CIRCLING *			840 (697-7.5)	
ALTERNATE			(1197-8.0)	

1. MAX IAS:
INITIAL : 210KT.
MAP TURN: 180KT.
- * 2. NO CIRCLING STH OF RWY 12/30.

Changes: UNICOM REMOVED, Editorial.

OOMNB02-177