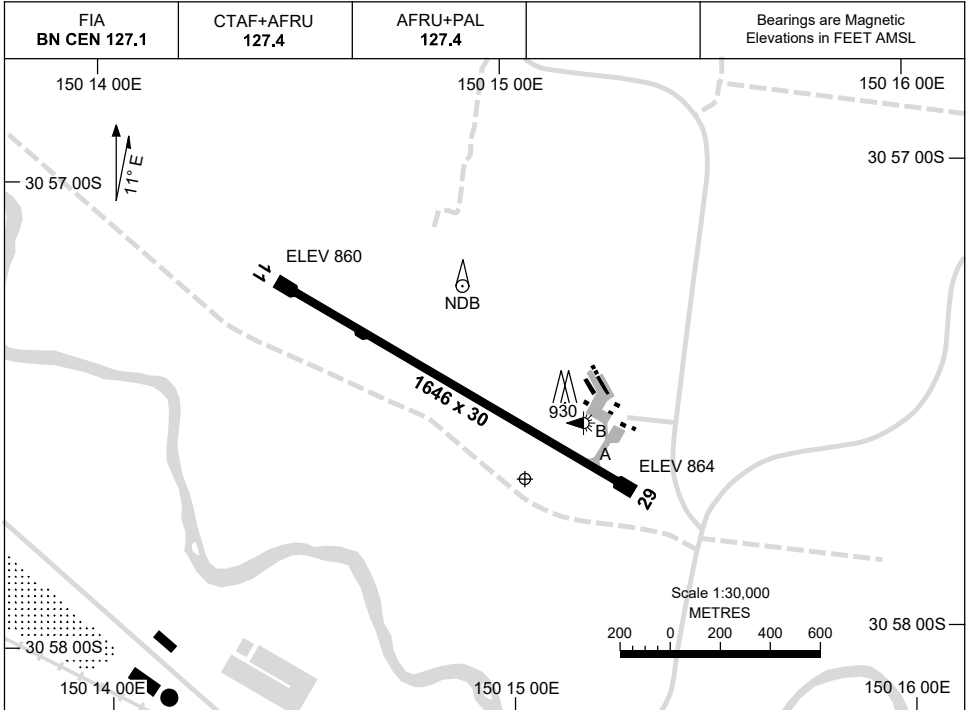


15 JUN 2023

AD ELEV 864
30 57 40S 150 15 02E

AERODROME CHART
GUNNEDAH, NSW (YGDH)



RWY	AERODROME LIGHTING	
	TAXIWAY : GREEN CL, BLUE EDGE RL : AFRU+PAL 127.4	
11 ¹¹²	LIRL	
²⁹² 29	LIRL	

NOTES

1. AWIS (PHONE) 02 9353 6425

Changes: RWY17/35 DCMSD, TWY DESIGNATORS AND BLUE EDGE.

GDHAD01-175

GNSS ARRIVAL PROCEDURES GUNNEDAH, NSW (YGDH)

15 JUN 2023

FIA BN CEN 127.1	CTAF+AFRU 127.4	AFRU+PAL 127.4		Bearings are Magnetic Elevations in FEET AMSL
---------------------	--------------------	-------------------	--	--

25 NM MSA
4200 GDH NDB 4800
B-185°
B-375°

REFERENCE WAYPOINT GDH NDB
AWIS (PHONE) 02 9353 6425

GDH NDB 407

* NO CIRCLING SOUTH OF RWY 11/29.

10 NM MSA 4100

AD ELEV 864

SECTOR A

MISSED APPROACH:
TURN RIGHT,
TRACK 300°. CLIMB TO 4200FT.

NM TO GDH NDB	25	15	13	10	9	7	6	5	4	3	2.2	2.1				
CIRCLING MINIMA				A,B: 1770-2.4		C: 1800-4.0		D: N/A								
NM TO GDH NDB	11.7	11	10	9	8	7	6	5	4	3	2.2	2.1				
ALT (3° APCH PATH)	4800	4600	4290	3970	3650	3330	3010	2690	2370	2060	1800	1770				

SECTOR B

MISSED APPROACH:
CLIMB ON TRACK
TO 4800FT.

NM TO GDH NDB	25	15	13	8	6	4	3	0								
CIRCLING MINIMA				A,B: 2030-2.4		C: 2030-4.0		D: N/A								
NM TO GDH NDB	10.6	10	9	8	7	6	5	4	3	1.9						
ALT (3° APCH PATH)	4800	4610	4290	3980	3660	3340	3020	2700	2380	2030						

SECTOR C

MISSED APPROACH:
TURN AS APPROPRIATE
TRACK 130°. CLIMB TO 4800FT.

NM TO GDH NDB	25	15	14	11	9	7	6	4	0							
CIRCLING MINIMA				A,B: 1770-2.4		C: 1800-4.0		D: N/A								
NM TO GDH NDB	11.6	11	10	9	8	7	6	5	4	3	2.2	2.1				
ALT (3° APCH PATH)	4800	4600	4280	3960	3650	3330	3010	2690	2370	2050	1800	1770				

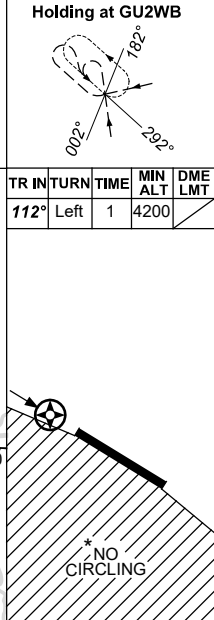
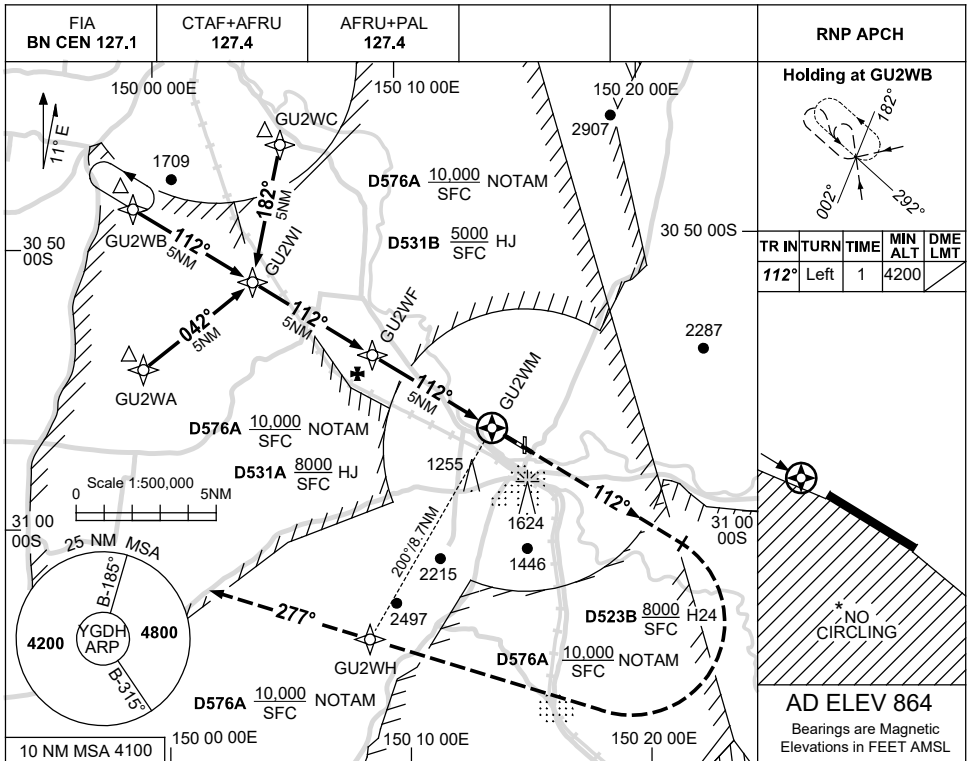
Changes: RWY17/35 DCMSD.

GDHDG01-175

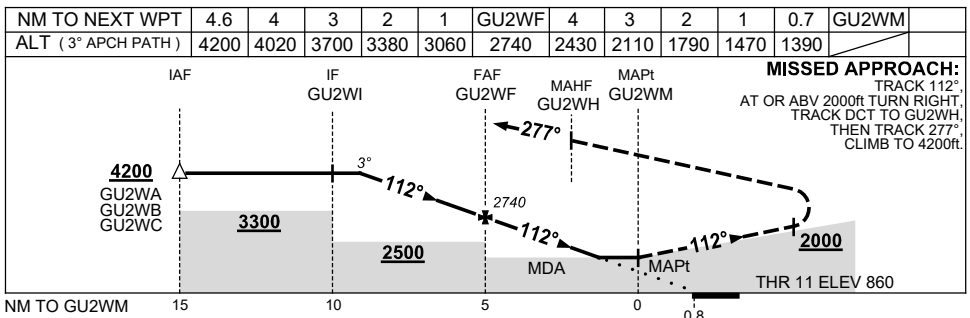
USE QNH

RNP RWY 11
GUNNEDAH, NSW (YGDH)

21 MAR 2024



AD ELEV 864
 Bearings are Magnetic
 Elevations in FEET AMSL



CATEGORY	A	B	C	D
LNAV	1390 (526-3.0)			NOT APPLICABLE
CIRCLING*	1770 (906-2.4)	1800 (936-4.0)		
ALTERNATE	(1406-4.4)	(1436-6.0)		

- NOTES**
- MAX IAS: INITIAL : 210KT.
 - * NO CIRCLING SOUTH OF RWY 11/29.
 - AWIS (PHONE) 02 9353 6425

Changes: D576A, D523B, D531A & D531B ADDED, Editorial.

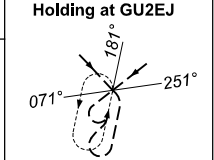
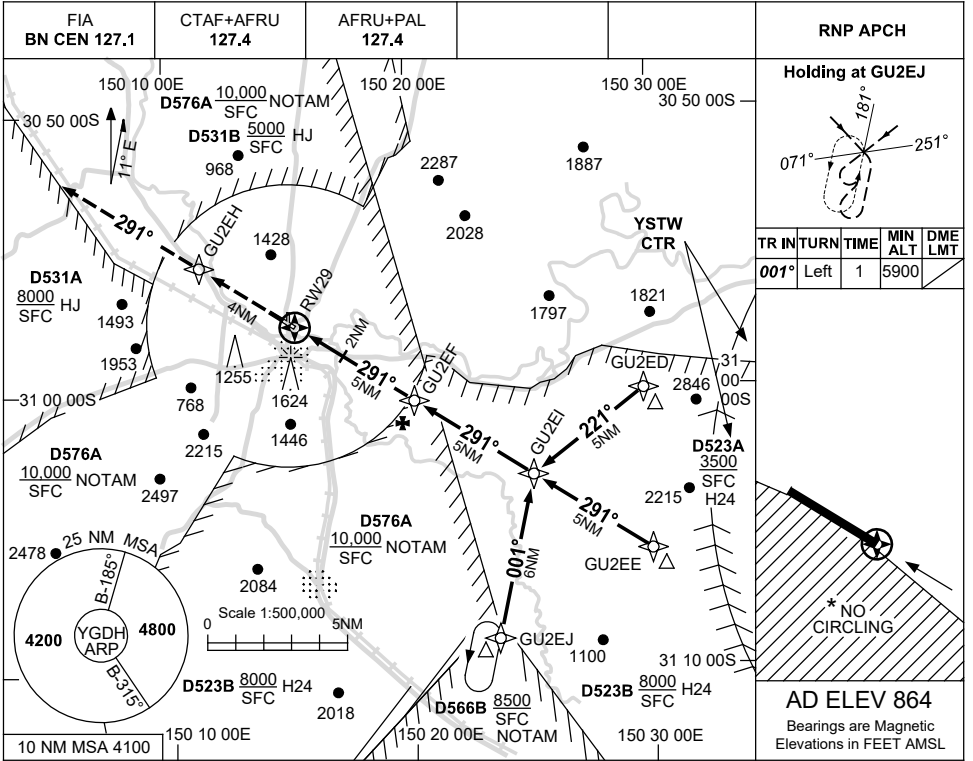
GDHGN01-178

USE QNH

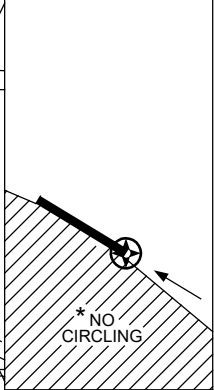
RNP RWY 29

GUNNEDAH, NSW (YGDH)

21 MAR 2024



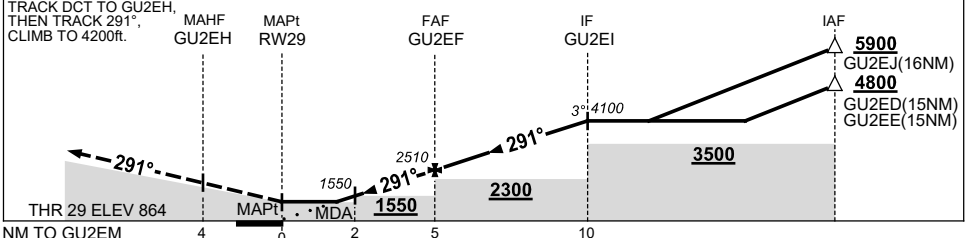
TR	IN	TURN	TIME	MIN ALT	DME LMT
001°	Left	1	5900		



AD ELEV 864
Bearings are Magnetic
Elevations in FEET AMSL

NM TO NEXT WPT	RW29	1.4	2	3	4	GU2EF	1	2	3	4	GU2EI		
ALT (3° APCH PATH)	1370	1550	1870	2190	2510	2820	3140	3460	3780	4100			

MISSED APPROACH:



NOTES

- MAX IAS: INITIAL : 210KT.
- NO CIRCLING S OF RWY 11/29.
- AWIS (PHONE) 02 9353 6425.
- HOLDING OVERLIES YQDI RNP W PROC.

CATEGORY	A	B	C	D
LNAV	1370 (506-2.9)			NOT APPLICABLE
CIRCLING *	1770 (906-2.4)	1800 (936-4.0)		
ALTERNATE	(1406-4.4)		(1436-6.0)	

Changes: D576A & D566B ADDED, Editorial.

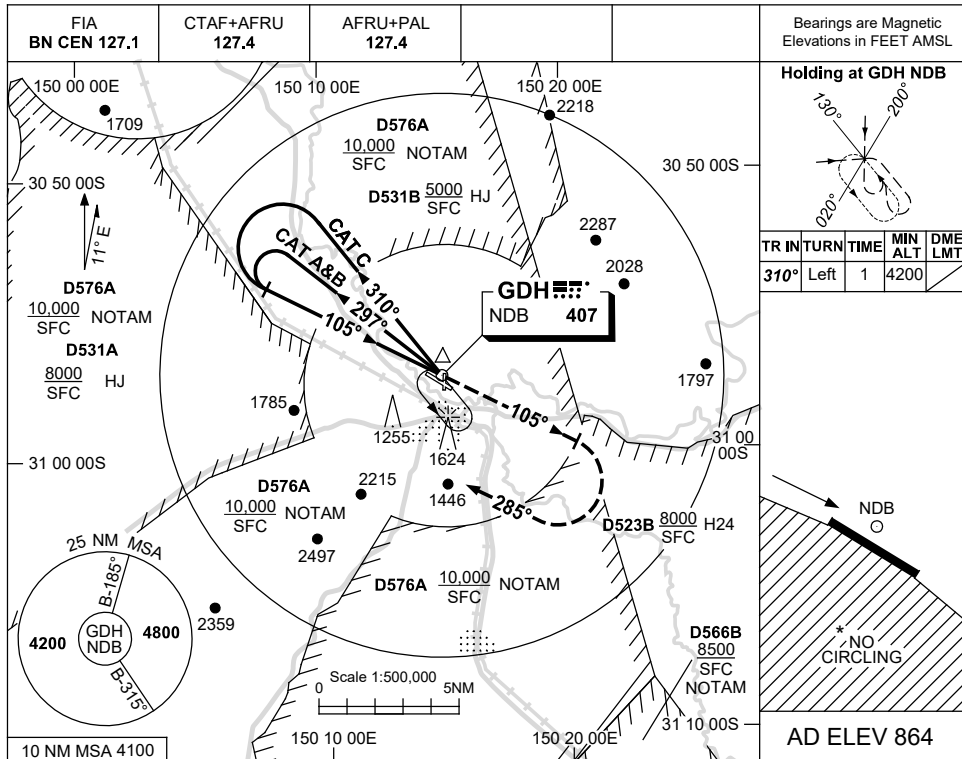
GDHGN02-178



USE QNH

NDB RWY 11
GUNNEDAH, NSW (YGDH)

21 MAR 2024



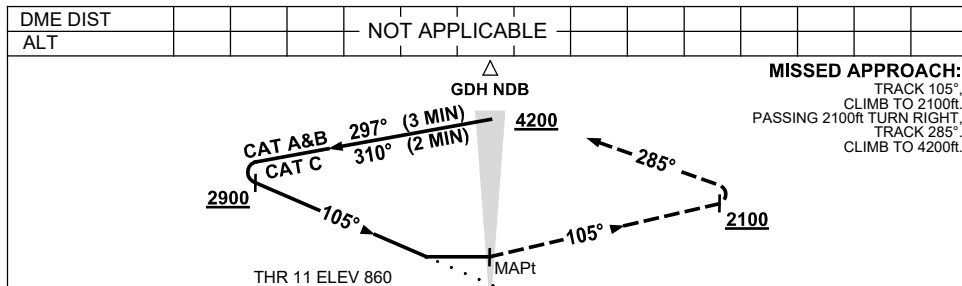
Bearings are Magnetic
 Elevations in FEET AMSL

Holding at GDH NDB

TR IN	TURN	TIME	MIN ALT	DME LMT
310°	Left	1	4200	

AD ELEV 864

* NO CIRCLING



CATEGORY	A	B	C	D
S-I NDB	1770 (906-5.0)			NOT APPLICABLE
CIRCLING*	1770 (906-2.4)	1800 (936-4.0)		
ALTERNATE	(1406-4.4)	(1436-6.0)		

- NOTES**
- MAX IAS:
 INITIAL :
 CAT C 210KT.
 HOLDING: 160KT.
 - NO CIRCLING SOUTH OF RWY 11/29.
 - AWIS (PHONE)
 02 9353 6425

Changes: D576A, D566B, D523B, D531A & D531B ADDED, Editorial.

GDHNB01-178