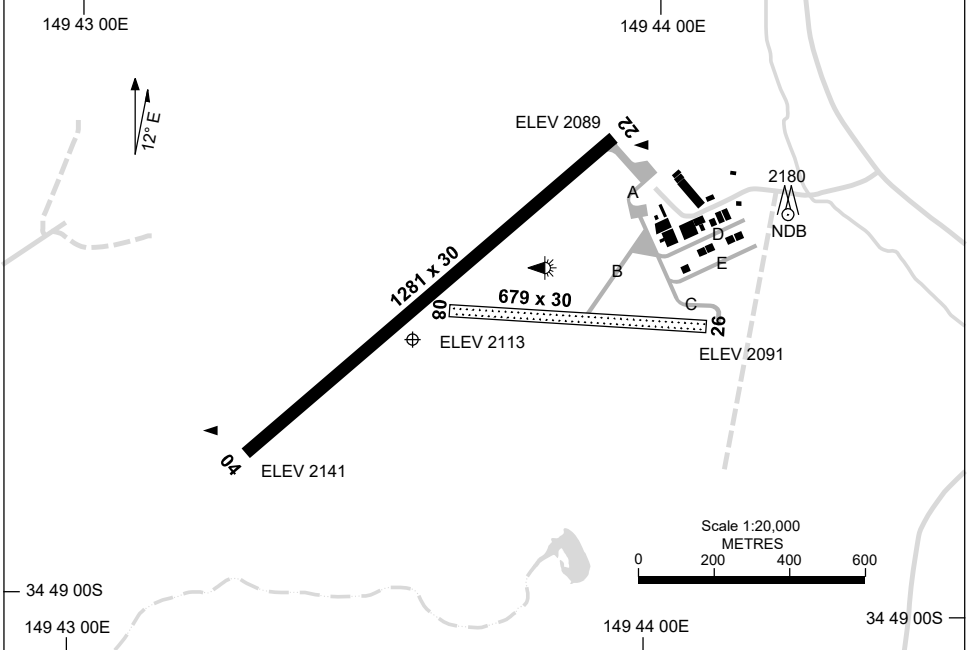


15 JUN 2023

AD ELEV 2141
34 48 37S 149 43 35E

AERODROME CHART
GOULBURN, NSW (YGLB)

AWIS 136.3	FIA ML CEN 121.2 (E) 124.1 (W)	CTAF+AFRU 127.15	PAL+AA 119.6	Bearings are Magnetic Elevations in FEET AMSL
---------------	--------------------------------------	---------------------	-----------------	--



RWY		AERODROME LIGHTING
		TAXIWAY : BLUE EDGE RL : PAL+AA 119.6
04 ⁰³⁵	LIRL	
²¹⁵ 22	LIRL	
08 ⁰⁸⁰	NIL	
²⁶⁰ 26	NIL	

NOTES

- FIA FREQ 121.2 ON GROUND.
- AWIS RQ 1 SEC PULSE TO ACT.

Changes: NOTES.

GLBAD01-175

GNSS ARRIVAL PROCEDURES GOULBURN, NSW (YGLB)

15 JUN 2023

AWIS 136.3	FIA ML CEN 121.2 (E) 124.1 (W)	CTAF+AFRU 127.15	PAL+AA 119.6		Bearings are Magnetic Elevations in FEET AMSL
---------------	--------------------------------------	---------------------	-----------------	--	--

REFERENCE WAYPOINT GLB NDB

GLB NDB

407

* NO CIRCLING NORTH OF RUNWAY 04/22.

AD ELEV 2141

SECTOR A

MISSED APPROACH:

TURN LEFT,
TRACK 236°. CLIMB TO 4700FT.

NM TO GLB NDB	25	15	12	8	6	5	2	0											
CIRCLING MINIMA	A,B: 3290-2.4			C: 3520-4.0			D: N/A												
NM TO GLB NDB	5.5	5	4	3	2	1.7	1												
ALT (3° APCH PATH)	4700	4560	4240	3920	3600	3520	3290												

SECTOR B

MISSED APPROACH:

TURN AS APPROPRIATE,
TRACK 270°. CLIMB TO 4700FT.

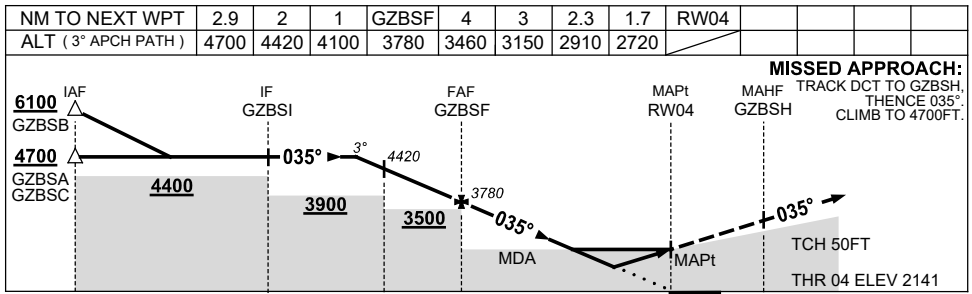
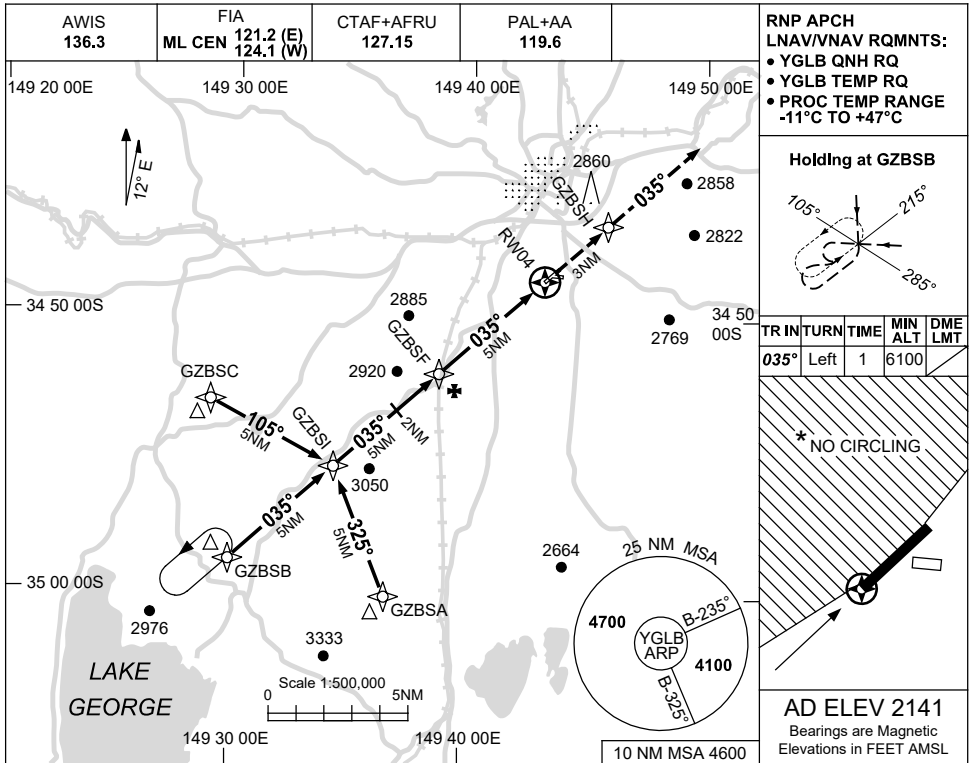
NM TO GLB NDB	25	15	11	7	5	4	2	0											
CIRCLING MINIMA	A,B: 3500-2.4			C: 3520-4.0			D: N/A												
NM TO GLB NDB	5.8	5	4	3	2	1.7													
ALT (3° APCH PATH)	4800	4560	4240	3920	3600	3500													

Changes: GFY OPS NOTE REMOVED. GLBDG01-175

15 JUN 2023

USE QNH

RNP RWY 04
GOULBURN, NSW (YGLB)



CATEGORY	A	B	C	D
LNAV/VNAV		2720 (579-3.3)		NOT APPLICABLE
LNAV		2910 (769-4.4)		
CIRCLING *	3290 (1149-2.4)		3520 (1379-4.0)	
ALTERNATE	(1649-4.4)		(1879-6.0)	

- NOTES**
- MAX IAS:
INITIAL : 220KT.
 - * 2. NO CIRCLING N OF RWY 04/22.

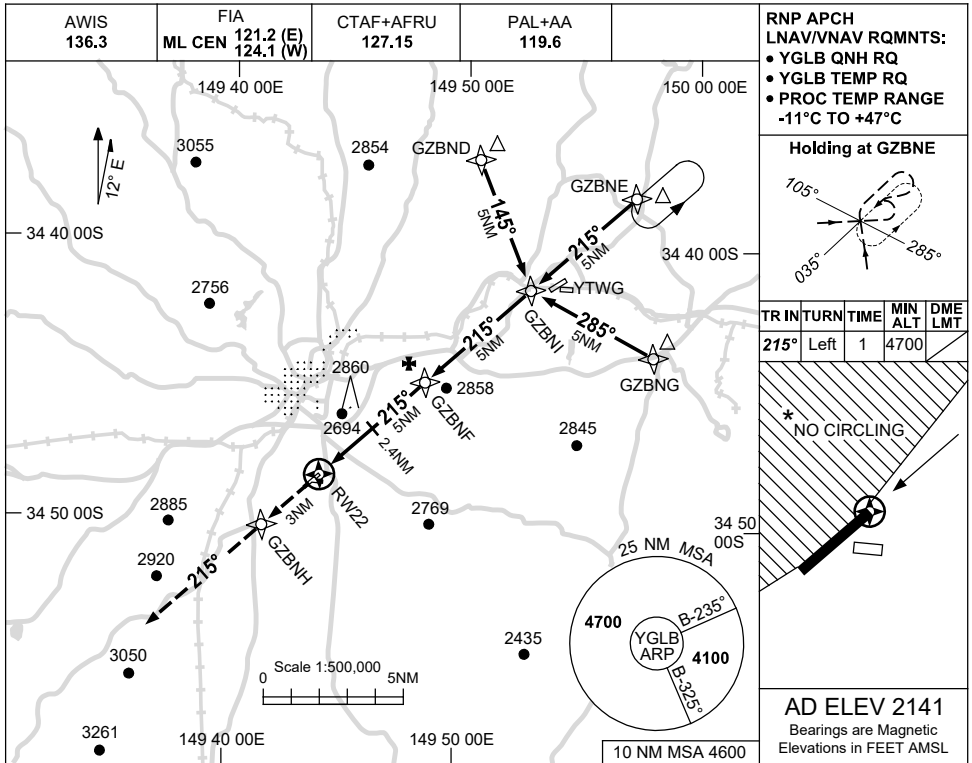
Changes: GZBSB HOLD ALT.

GLBGN01-175

15 JUN 2023

USE QNH

RNP RWY 22
GOULBURN, NSW (YGLB)



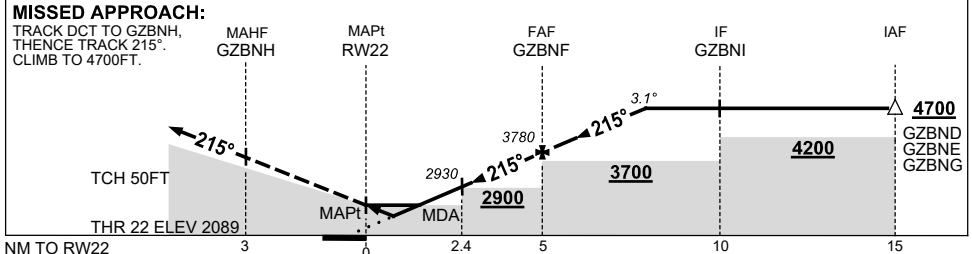
RNP APCH
LNAV/VNAV RQMTS:
• YGLB QNH RQ
• YGLB TEMP RQ
• PROC TEMP RANGE
-11°C TO +47°C

Holding at GZBNE

TR IN	TURN	TIME	MIN ALT	DME LMT
215°	Left	1	4700	

AD ELEV 2141
Bearings are Magnetic
Elevations in FEET AMSL

NM TO NEXT WPT	RW22	1.2	2	2.4	3	4	GZBNF	1	2	2.8			
ALT (3.1° APCH PATH)		2520	2810	2930	3130	3460	3780	4110	4440	4700			



CATEGORY	A	B	C	D
LNAV/VNAV	2520 (431-2.4)			NOT APPLICABLE
LNAV	2810 (721-4.0)			
CIRCLING *	3290 (1149-2.4)		3520 (1379-4.0)	
ALTERNATE	(1649-4.4)		(1879-6.0)	

- NOTES**
1. MAX IAS: INITIAL : 210KT.
 - * 2. NO CIRCLING N OF RWY 04/22.

Changes: GFY OPS SYMBOL REMOVED, Editorial.

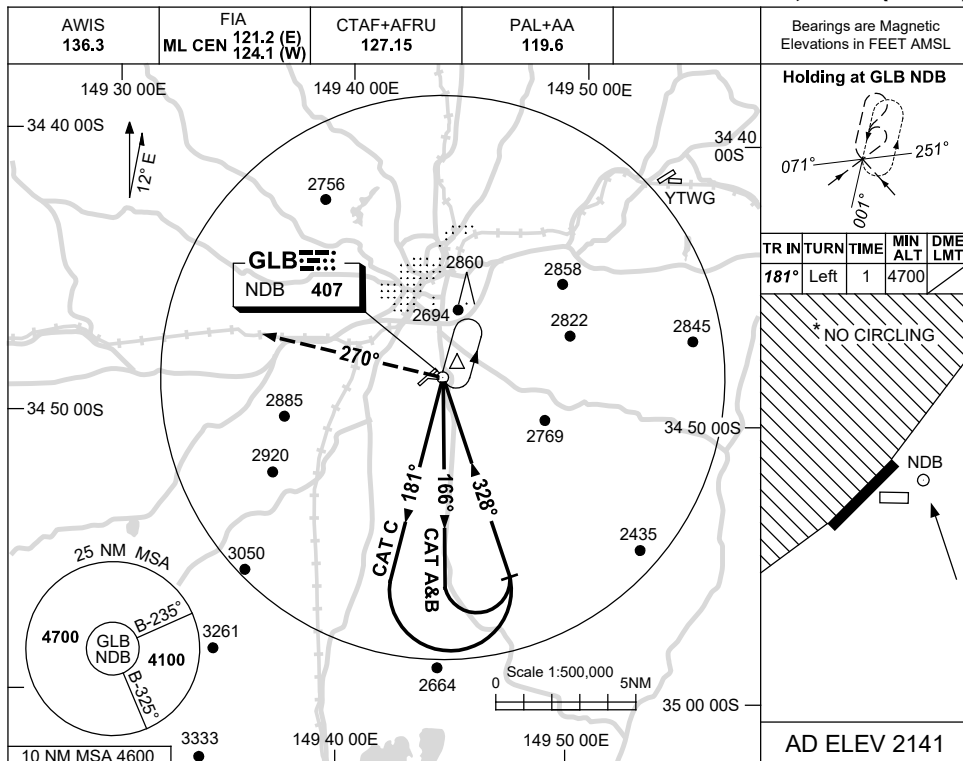
GLBGN02-175

USE QNH

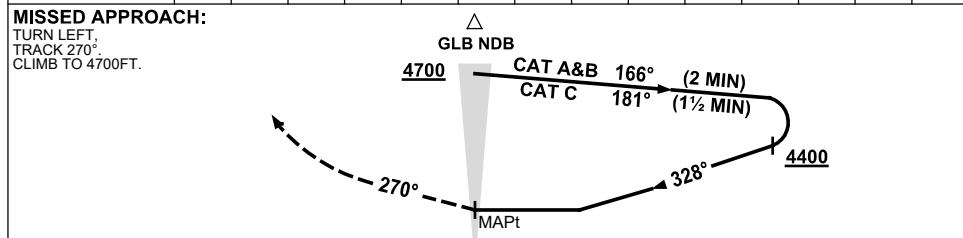
NDB-A

15 JUN 2023

GOULBURN, NSW (YGLB)



DME DIST			NOT APPLICABLE					
ALT								



NOTES

1. MAX IAS:
INITIAL : 210KT.
MAP TURN : 210KT.
- * 2. NO CIRCLING N
OF RWY 04/22.

CATEGORY	A	B	C	D
CIRCLING *	3290 (1149-2.4)		3520 (1379-4.0)	NOT APPLICABLE
ALTERNATE	(1649-4.4)		(1879-6.0)	

Changes: WINCH AND GFY OPS SYMBOL REMOVED.

GLBNB01-175