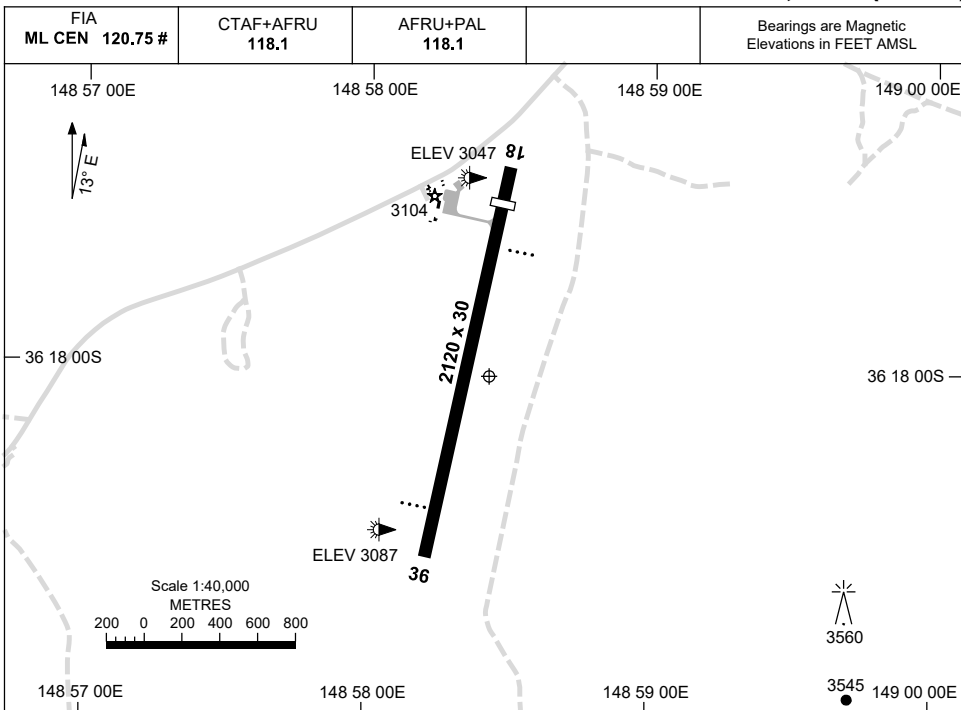


23 MAR 2023

AD ELEV 3106
36 18 02S 148 58 26E

AERODROME CHART
COOMA-SNOWY MOUNTAINS, NSW (YCOM)



	AERODROME LIGHTING
RWY	ABN : FLG W 10 SEC TAXIWAYS : BLUE EDGE RL : AFRU+PAL 118.1 , SDBY (10 SEC)
18 <small>180</small>	PAPI 3.0° 40FT LIRL
<small>360</small> 36	PAPI 3.0° 40FT LIRL

NOTES

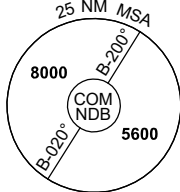
1. OBSTRUCTION HAZARD BEACONS EAST AND NORTH OF AD
2. AWIS (PHONE) 02 9353 6414
3. # ML FIA 120.75 AVBL IN CIRCUIT AREA. FOR ON GROUND COM USE ML CEN 119.4.

Changes: FIA, NOTE 4 DELETED.

COMAD01-174

23 MAR 2023

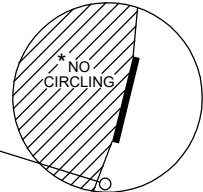
FIA ML CEN 120.75	CTAF+AFRU 118.1	AFRU+PAL 118.1			Bearings are Magnetic Elevations in FEET AMSL
----------------------	--------------------	-------------------	--	--	--



**DME USING COM DME
REFERENCE WAYPOINT COM NDB**

AWIS (PHONE) 02 9353 6414

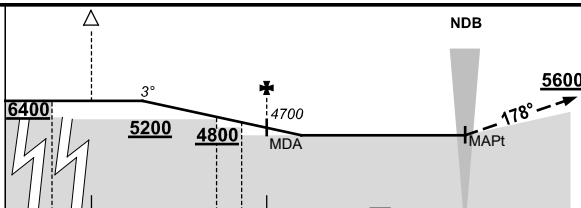
COM	293
NDB	293
DME	114.0



* NO CIRCLING WEST OF RWY 18/36.

AD ELEV 3106

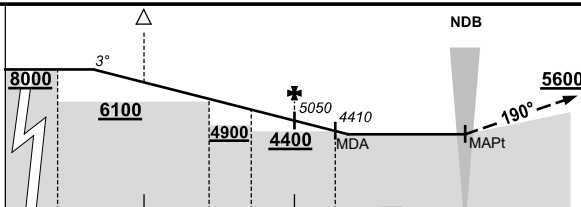
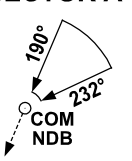
CB TO COM



MISSED APPROACH:
TRACK 178°,
CLIMB TO 5600FT.

NM TO COM NDB	27	19	15	10	9	8	3.8	0							
CIRCLING MINIMA	A,B: 4330-5.0		C: 4330-5.0		D: 4330-5.0										
NM TO COM NDB	13.3	13	12	11	10	9	8	7	6.8						
ALT (3° APCH PATH)	6400	6290	5970	5660	5340	5020	4700	4380	4330						

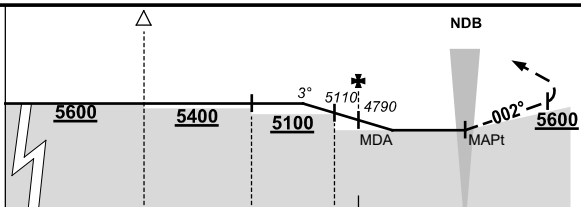
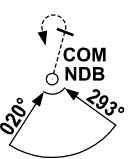
SECTOR A



MISSED APPROACH:
TRACK 190°,
CLIMB TO 5600FT.

NM TO COM NDB	25	19	15	12	10	8	6	3.8	0						
CIRCLING MINIMA	A,B: 4250-5.0		C: 4250-5.0		D: 4250-5.0										
NM TO COM NDB	17.3	17	16	15	14	13	12	11	10	9	8	7	6	5.5	
ALT (3° APCH PATH)	8000	7920	7600	7280	6960	6640	6320	6010	5690	5370	5050	4730	4410	4250	

SECTOR B



MISSED APPROACH:
TRACK 002°,
CLIMB TO 5600FT,
THEN TURN LEFT
TO NDB.

NM TO COM NDB	25	15	10	6	5	0	2.7								
CIRCLING MINIMA	A,B: 4250-5.0		C: 4250-5.0		D: 4250-5.0										
NM TO COM NDB	7.5	7	6	5	4	3.3									
ALT (3° APCH PATH)	5600	5430	5110	4790	4470	4250									

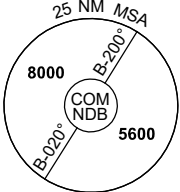
Changes: FIA

COMDG01-174

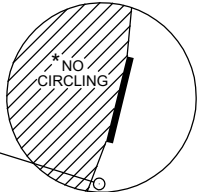
DME or GNSS ARRIVAL PROCEDURES COOMA-SNOWY MOUNTAINS, NSW (YCOM) Page 2

23 MAR 2023

FIA ML CEN 120.75	CTAF+AFRU 118.1	AFRU+PAL 118.1			Bearings are Magnetic Elevations in FEET AMSL
----------------------	--------------------	-------------------	--	--	--



**DME USING COM DME
REFERENCE WAYPOINT COM NDB**
AWIS (PHONE) 02 9353 6414



10 NM MSA 5700

* NO CIRCLING WEST OF RWY 18/36.

AD ELEV 3106

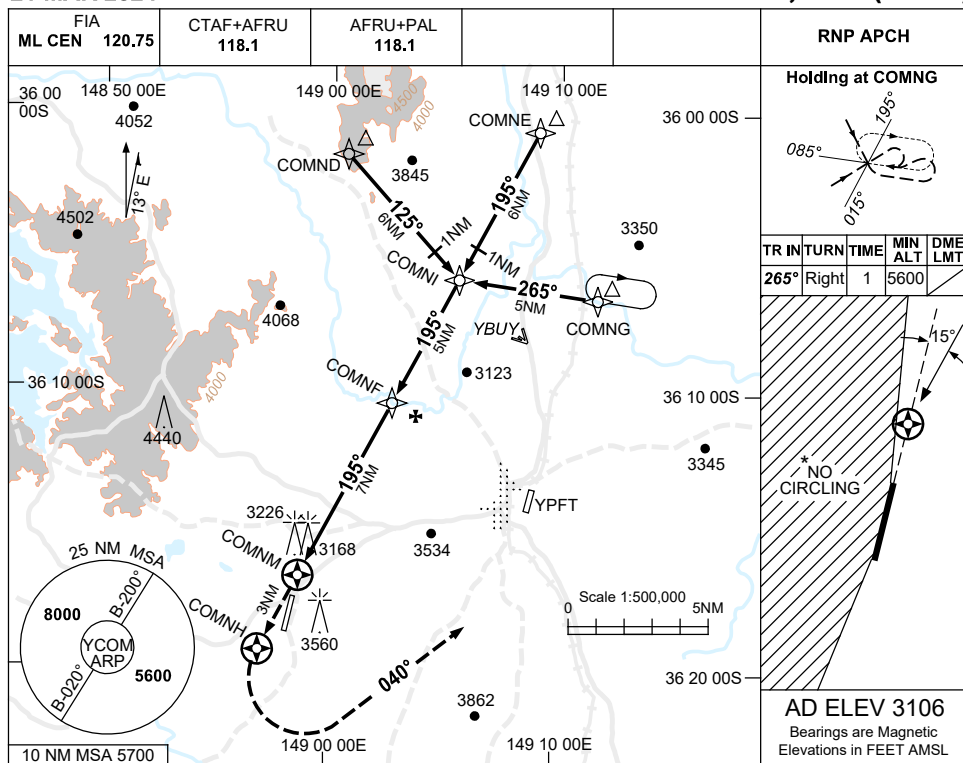
SECTOR C											MISSED APPROACH: TRACK 075°, CLIMB TO 5600FT.			
NM TO COM NDB	24	17	15	12	8	5	0							
CIRCLING MINIMA	A,B: 4250-5.0			C: 4250-5.0			D: 4250-5.0							
NM TO COM NDB	11.8	11	10	9	8	7	6	5	4	3	2	1	0	
ALT (3° APCH PATH)	8000	7760	7440	7120	6800	6480	6160	5840	5530	5210	4890	4570	4250	



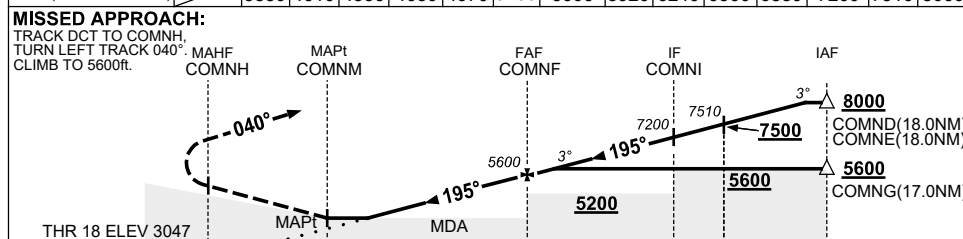
USE QNH COOMA-SNOWY MOUNTAINS, NSW (YCOM)

RNP RWY 18

21 MAR 2024



NM TO NEXT WPT	COMNM	1.4	2	3	4	5	6	COMNF	1	2	3	4	COMNI	1	2.5
ALT (3° APCH PATH)		3830	4010	4330	4650	4970	5280	5600	5920	6240	6560	6880	7200	7510	8000



NOTES

1. MAX IAS:
INITIAL : 210KT.
- * 2. NO CIRCLING WEST OF RWY 18/36.
3. AWIS (PHONE)
02 9353 6414
4. COLOUR: SEE SPEC NOTICES.
5. CAUTION:
INITIAL SEGMENTS OVERLAY YPFT RNP N.

CATEGORY	A	B	C	D
LNAV	3830 (783-4.5)			NOT APPLICABLE
CIRCLING *	4060 (954-2.4)		4160 (1054-4.0)	
ALTERNATE	(1454-4.4)		(1554-6.0)	

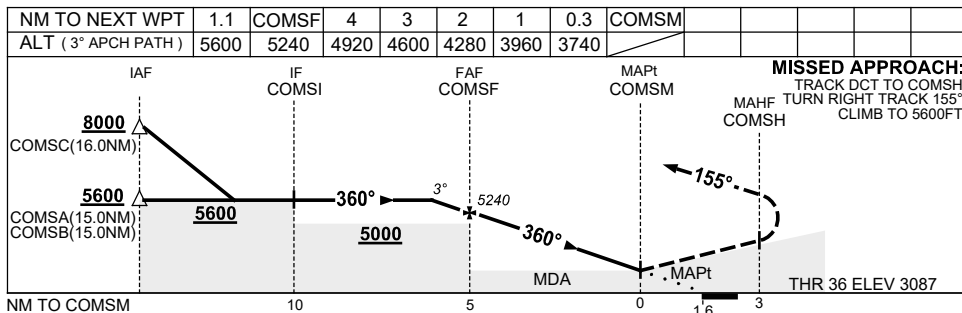
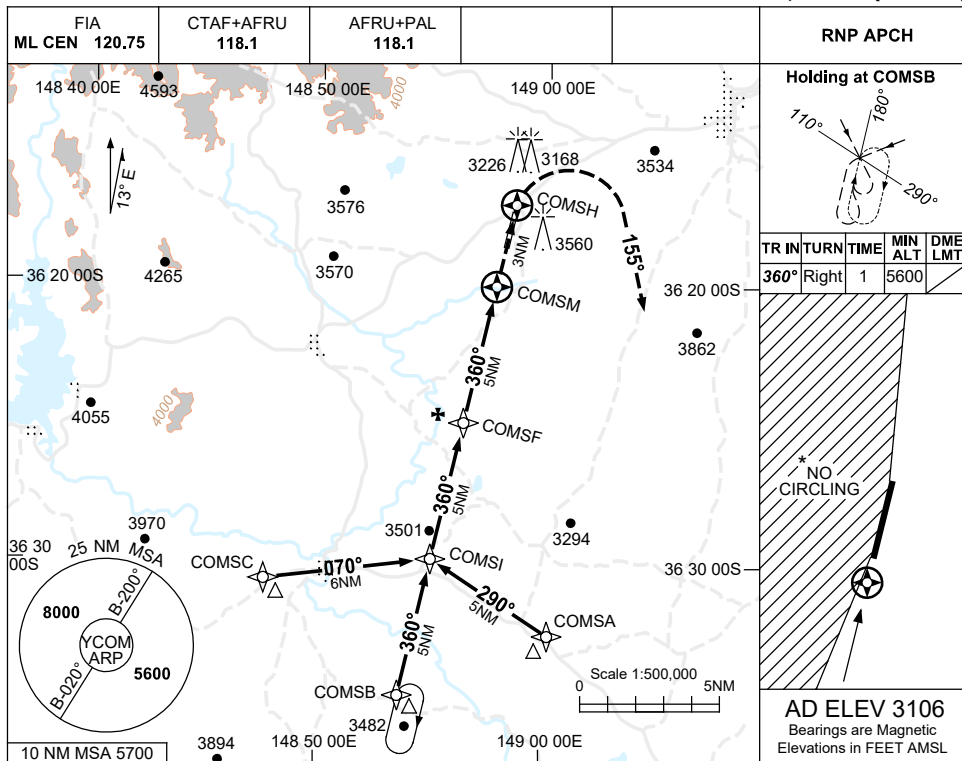
Changes: GLIDING SYMBOL REMOVED, Editorial.

COMGN01-178

USE QNH COOMA-SNOWY MOUNTAINS, NSW (YCOM)

RNP RWY 36

23 MAR 2023



NOTES

1. MAX IAS:
INITIAL : 210KT.
MAP TURN: 175KT.
- * 2. NO CIRCLING WEST OF RWY 18/36.
3. AWIS (PHONE)
02 9353 6414
4. COLOUR: SEE SPEC NOTICES.

CATEGORY	A	B	C	D
LNAV	3740 (653-3.7)			NOT APPLICABLE
CIRCLING *	4060 (954-2.4)		4160 (1054-4.0)	
ALTERNATE	(1454-4.4)		(1554-6.0)	

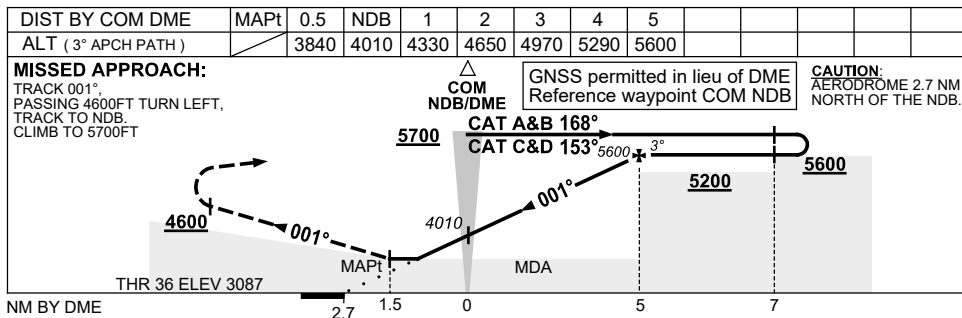
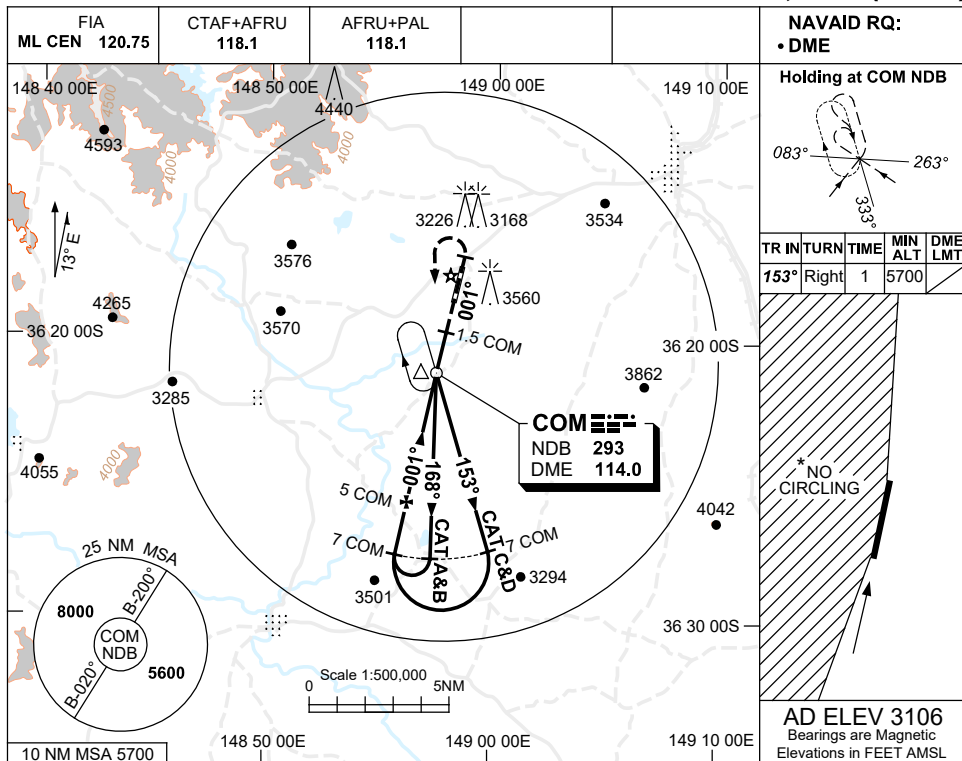
Changes: CHART TITLE, PBN SPECIFICATION BOX, FIA.

COMGN02-174

USE QNH
COOMA-SNOWY MOUNTAINS, NSW (YCOM)

NDB-Z RWY 36

23 MAR 2023



CATEGORY	A	B	C	D
S-I NDB/DME	3840 (753-4.3)			
CIRCLING *	4060 (954-2.4)		4160 (1054-5.0)	
ALTERNATE	(1454-4.4)		(1554-7.0)	

- NOTES**
- MAX IAS:
INITIAL : 210KT.
 - NO CIRCLING WEST OF RWY 18/36.
 - AWIS (PHONE)
02 9353 6414
 - COLOUR: SEE SPEC NOTICES.

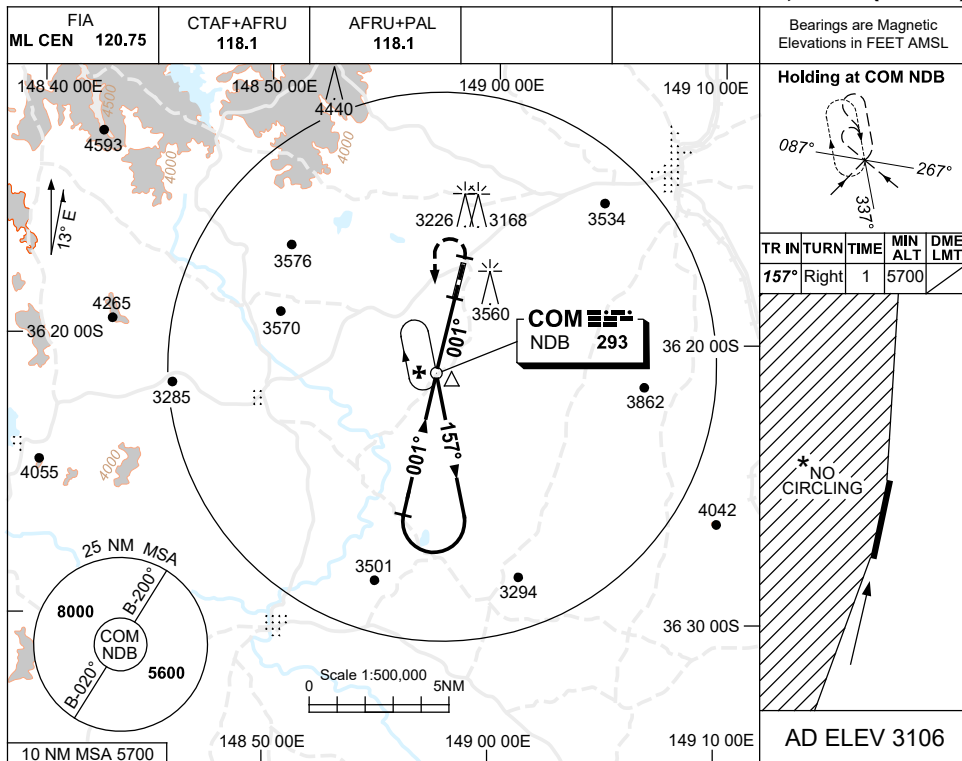
Changes: FIA.

COMNB01-174

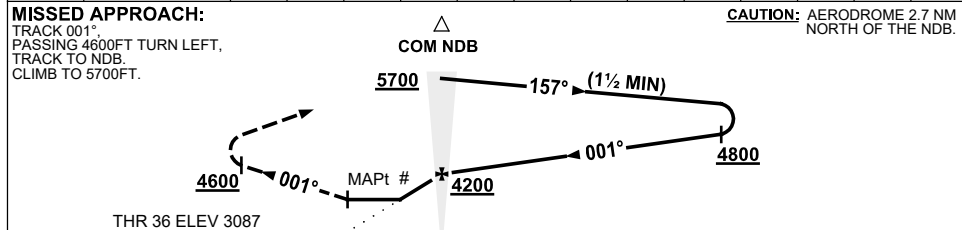
USE QNH
COOMA-SNOWY MOUNTAINS, NSW (YCOM)

NDB-Y RWY 36

23 MAR 2023



NDB	GS (KNOTS)	60	70	80	90	100	110	120	130				
to MAPt	TIME (MIN:SEC)	2:45	2:22	2:04	1:50	1:39	1:30	1:23	1:17				



NOTES

CATEGORY	A	B	D
S-I NDB	3940 (853-4.2)		NOT APPLICABLE
CIRCLING *	4060 (954-2.4)		
ALTERNATE	(1454-4.4)		

*1. NO CIRCLING WEST OF RWY 18/36.
#2. GRADIENT AFTER FAF 6.4% (390FT/NM).
3. AWIS (PHONE) 02 9353 6414
4. COLOUR: SEE SPEC NOTICES.

Changes: FIA

COMNB02-174