

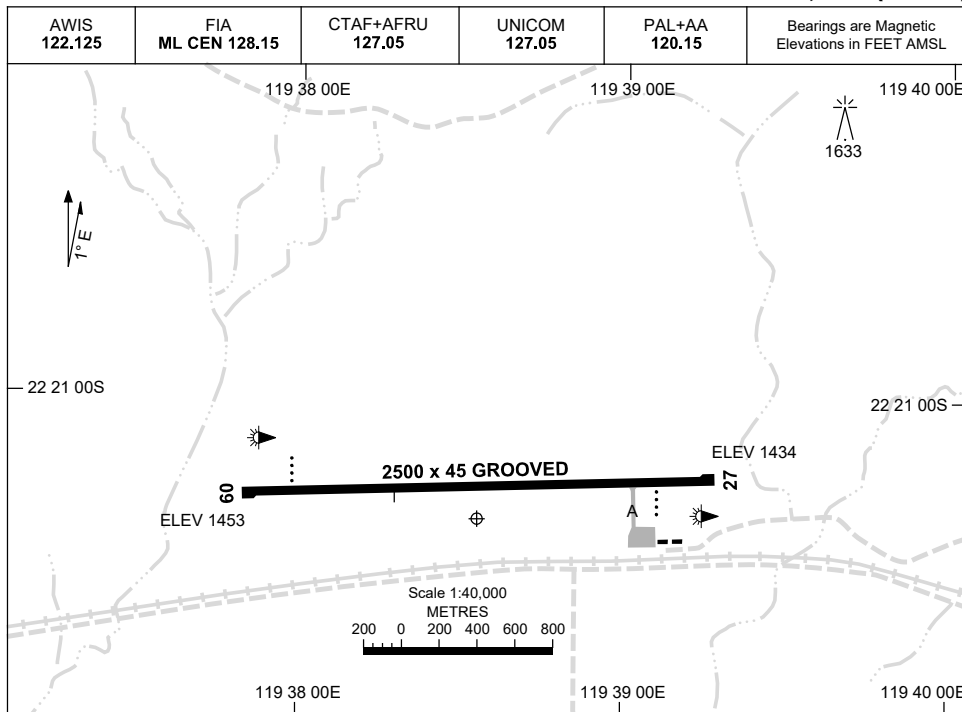
23 MAR 2023

AD ELEV 1454

AERODROME CHART - Page 1

22 21 21S 119 38 33E

CHRISTMAS CREEK, WA (YCHK)



	AERODROME LIGHTING
RWY	TAXIWAY : BLUE EDGE RL : PAL+AA 120.15 , SDBY (42 SEC)
09 <small>087</small>	PAPI 3.0° 53FT LIRL
<small>267</small> 27	PAPI 3.0° 53FT LIRL

NOTES

1. **CAUTION:** FORTESCUE DAVE FORREST (YDFD) AD 12NM TO WEST.
2. **CAUTION:** YDFD IS IN CLOSE PROXIMITY AND THE APCH/DEP TRACK CROSS CLOSE TO THE GROUND. DUE TO TERRAIN SCHIELDING, VHF CONTACT WITH ACFT ON OR CLOSE TO THE GROUND AT YDFD IS NOT POSSIBLE.
3. CTAF+AFRU NOT AVBL ON GROUND.
CONFIRMATION BY UNICOM.
4. FIA FREQ 128.15 AVBL IN CIRCUIT AREA

Changes: THR ELEV, NOTES AND SDBY SWITCHOVER TIME.

CHKAD01-174

24 MAR 2022

AD ELEV 1454

22 21 21S 119 38 33E

AERODROME CHART - Page 2

CHRISTMAS CREEK, WA (YCHK)

AWIS 122.125	FIA ML CEN 128.15	CTAF+AFRU 127.05	UNICOM 127.05	PAL+AA 120.15	Bearings are Magnetic Elevations in FEET AMSL
-----------------	----------------------	---------------------	------------------	------------------	--

OPERATING PROCEDURES

CAUTION: Procedure overlaps Fortescue Dave Forrest (YDFD) procedures. Fortescue Dave Forrest (YDFD) and Christmas Creek (YCHK) are considered one aerodrome for the purposes of aircraft separation.

The following conditions apply to this procedure:

Crews must be familiar with both YDFD and YCHK aerodrome environment and normal broadcast procedures apply.
In IMC or at night aircraft should not commence an approach until previous aircraft is assured of a landing.

Arriving Aircraft coordinate intention with FIA ML CEN prior to entering the arrival corridor for Fortescue Dave Forrest (YDFD) and Christmas Creek (YCHK).

West landing Configuration

Broadcast intentions for Christmas Creek (YCHK) and Fortescue Dave Forrest (YDFD) UNICOM 127.05 prior to leaving Newman and prior to reaching MILAL. If required hold at MILAL at or above 12,000FT. Depart MILAL on track 348° to DUGOV. Depart DUGOV to appropriate IAF.

East landing Configuration

Broadcast intentions for Christmas Creek (YCHK) and Fortescue Dave Forrest (YDFD) UNICOM 127.05 prior to leaving GUVNA for VEPEK. If required hold at VEPEK at or above 7,000FT. Depart VEPEK to appropriate IAF.

Changes: PAL+AA.

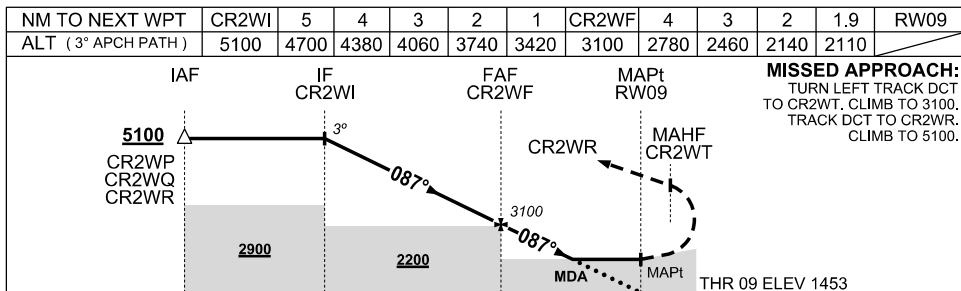
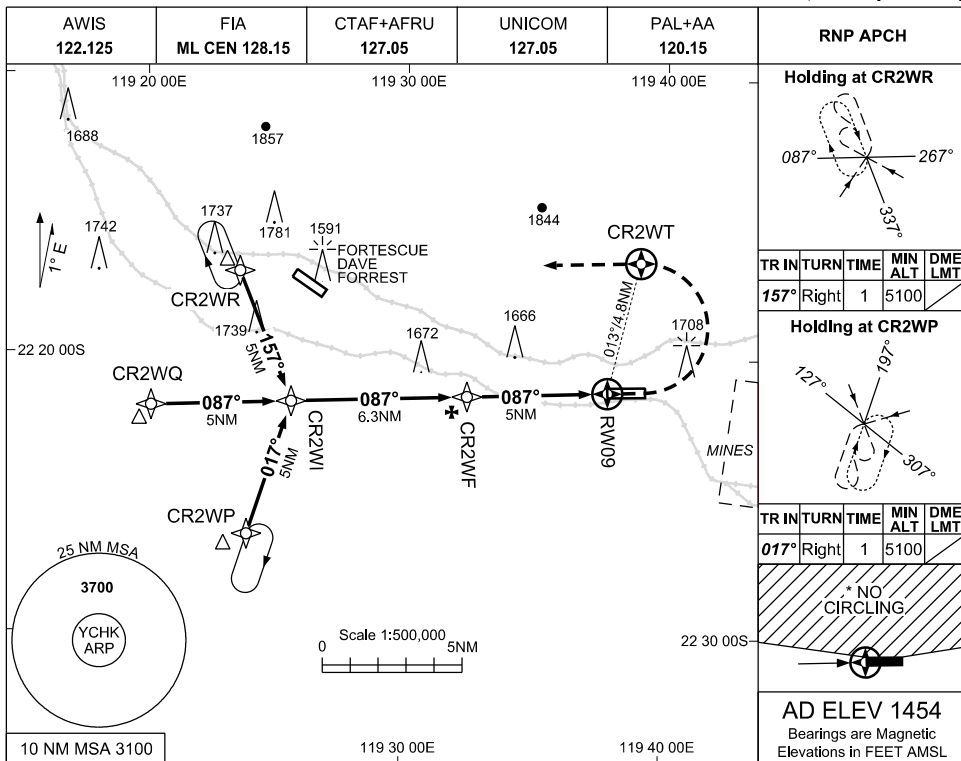
CHKAD02-170

USE QNH

RNP RWY 09

30 NOV 2023

CHRISTMAS CREEK, WA (YCHK)



CATEGORY	A	B	C	D
LNAV	2110 (656-3.7)			
* CIRCLING	2140 (686-2.4)		2260 (806-4.0) 2260 (806-5.0)	
ALTERNATE	(1186-4.4)		(1306-6.0) (1306-7.0)	

NOTES

- MAX IAS: 210KT
INITIAL: 210KT
MAP TURN: 195KT
HOLDING: 210KT
CAT D
CIRCLING: 185KT
- NO CIRCLING N OF RWY 09/27.
- CAUTION:** PROC OVERLAID BY PROCS AT YDF. AIRCRAFT SEPARATION IS NOT ASSURED.

Changes: CHART TITLE, EDITORIAL

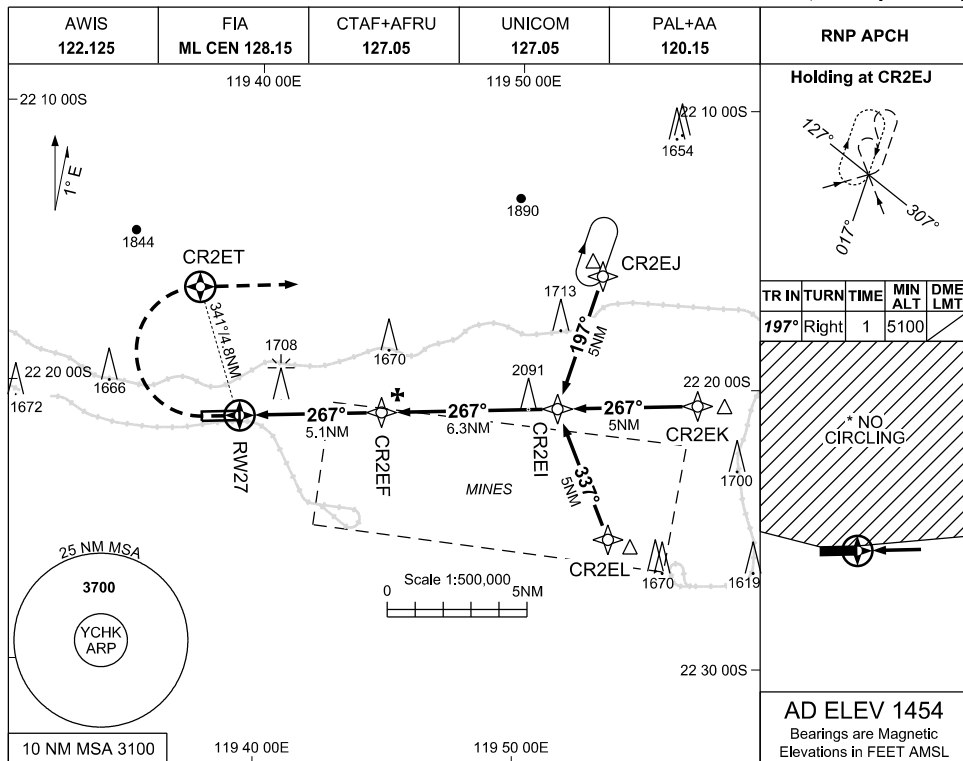
CHKGN01-177

USE QNH

RNP RWY 27

30 NOV 2023

CHRISTMAS CREEK, WA (YCHK)



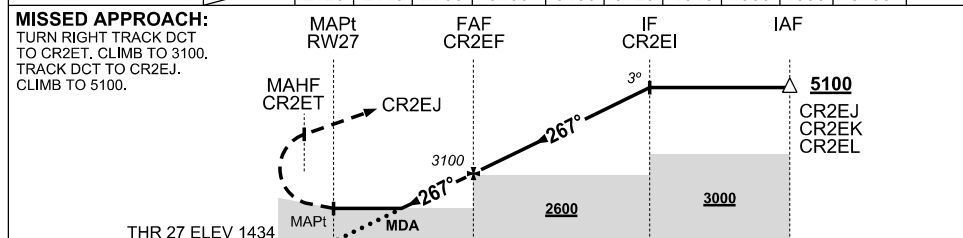
TR	INTURN	TIME	MIN ALT	DME LMT
197°	Right	1	5100	

* NO CIRCLING

AD ELEV 1454

Bearings are Magnetic Elevations in FEET AMSL

NM TO NEXT WPT	RW27	2.0	3	4	CR2EF	1	2	3	4	5	CR2EI
ALT (3° APCH PATH)		2120	2440	2760	3100	3400	3720	4040	4360	4680	5100



NM TO RW27 0 5.1 11.4 16.4

NOTES

- MAX IAS: 210KT
INITIAL: 210KT
MAP TURN: 195KT
HOLDING: 210KT
CAT D
CIRCLING: 185KT
- NO CIRCLING N OF RWY 09/27.
- CAUTION: PROC OVERLaid BY PROCS AT YDF. AIRCRAFT SEPARATION IS NOT ASSURED.

CATEGORY	A	B	C	D
LNAV	2120 (686-3.9)			
* CIRCLING	2140(686-2.4)	2260 (806-4.0)	2260 (806-5.0)	
ALTERNATE	(1186-4.4)	(1306-6.0)	(1306-7.0)	

Changes: CHART TITLE, EDITORIAL

CHKGN02-177

