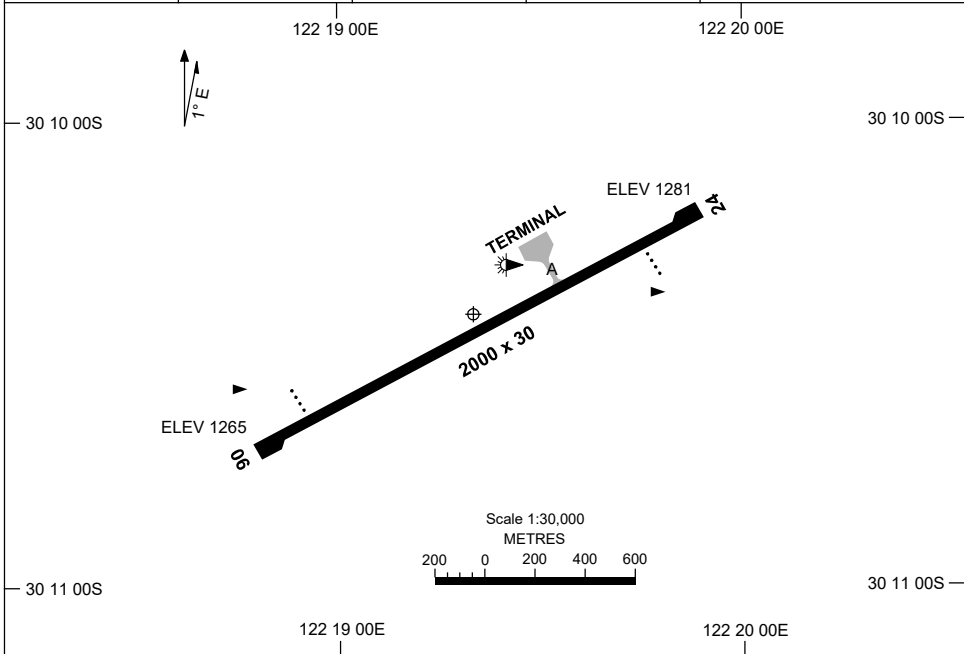


30 NOV 2023

AD ELEV 1291  
30 10 25S 122 19 20E

AERODROME CHART  
**CAROSUE DAM, WA (YSCD)**

FIA ML CEN 125.75	CTAF+AFRU 126.7	UNICOM 126.7		Bearings are Magnetic Elevations in FEET AMSL
----------------------	--------------------	-----------------	--	--



RWY	AERODROME LIGHTING	
		RL : SDBY, PTBL (EMERG ONLY - 120 MIN PN ARO : 08 6229 9014)
<b>06</b> <sup>061</sup>	PAPI 3.0° LEFT SIDE 48.5FT	
<sup>241</sup> <b>24</b>	PAPI 3.0° LEFT SIDE 48.5FT	

**NOTES**

- MANUAL ACTIVATION OF PAPI (30 MIN PN HJ)
- NO MAINS PWR AVBL - PAPI PWR SUPPLIED BY GENERATORS.

Changes: UNICOM ADDED, Editorial.

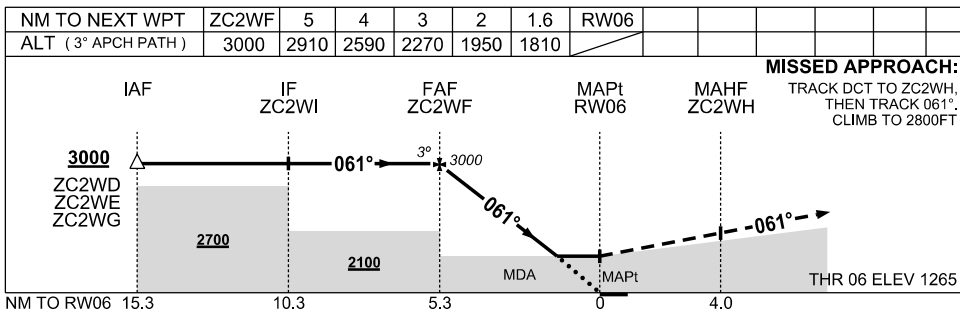
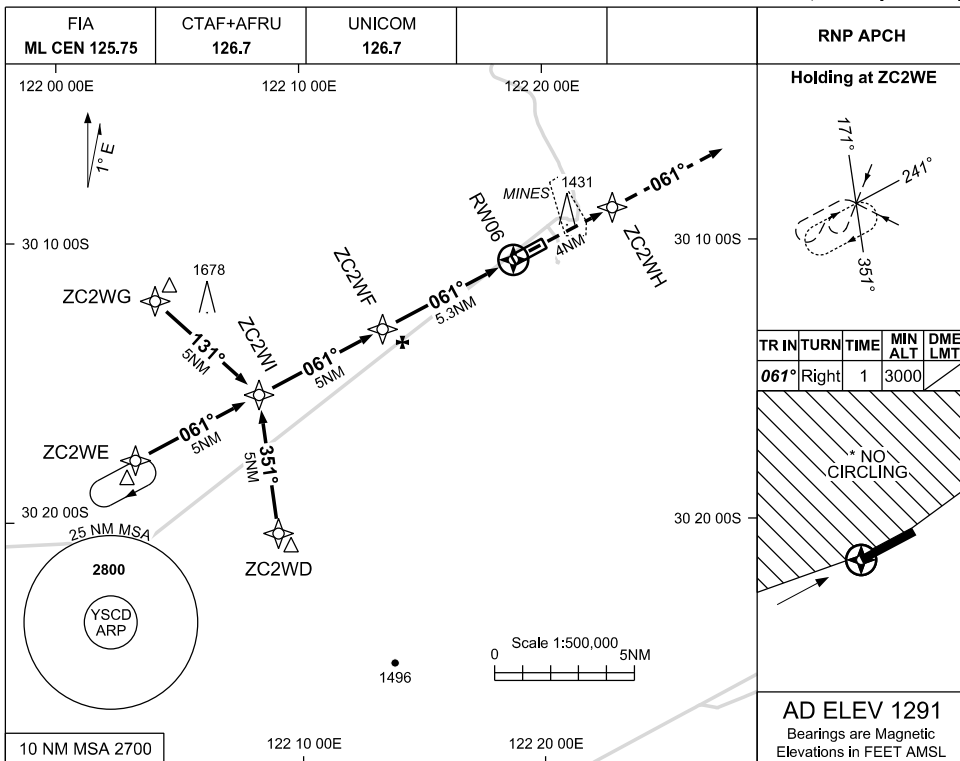
SCDAD01-177

USE QNH

RNP RWY 06

30 NOV 2023

CAROSUE DAM, WA (YSCD)



NOTES

CATEGORY	A	B	C	D
LNAV	1810 (545-3.1)			NOT APPLICABLE
CIRCLING *	1920 (629-2.4)		2020 (729-4.0)	
ALTERNATE	(1129-4.4)		(1229-6.0)	

- 1. MAX IAS:  
INITIAL : 210KT
- \*2. NO CIRCLING  
NORTH OF  
RWY 06/24

Changes: UNICOM ADDED, EDITORIAL.

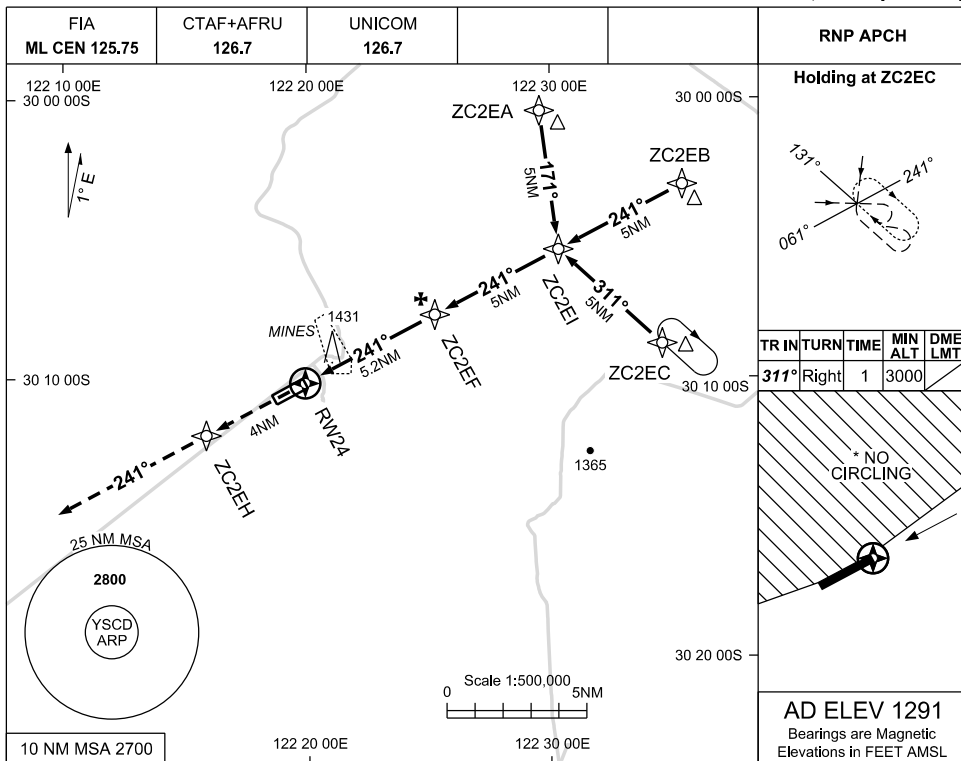
SCDGN01-177

USE QNH

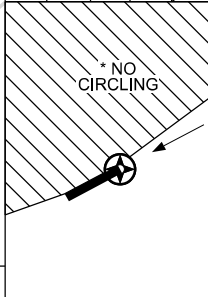
RNP RWY 24

**CAROSUE DAM, WA (YSCD)**

30 NOV 2023



TR	TURN	TIME	MIN ALT	DME LMT
311°	Right	1	3000	



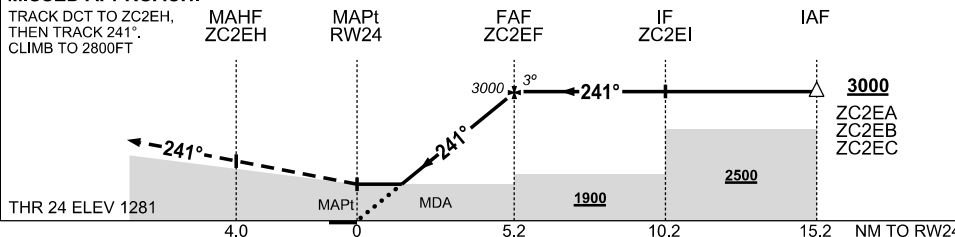
**AD ELEV 1291**

Bearings are Magnetic Elevations in FEET AMSL

NM TO NEXT WPT	RW24	1.6	2	3	4	5	ZC2EF			
ALT (3° APCH PATH)		1830	1970	2290	2600	2920	3000			

**MISSED APPROACH:**

TRACK DCT TO ZC2EH, THEN TRACK 241°. CLIMB TO 2800FT



**NOTES**

CATEGORY	A	B	C	D
LNAV	1830 (549-3.1)			NOT APPLICABLE
CIRCLING *	1920 (629-2.4)		2020 (729-4.0)	
ALTERNATE	(1129-4.4)		(1229-6.0)	

- 1. MAX IAS: INITIAL : 210KT
- \*2. NO CIRCLING NORTH OF RWY 06/24

Changes: UNICOM ADDED, EDITORIAL.

SCDGN02-177