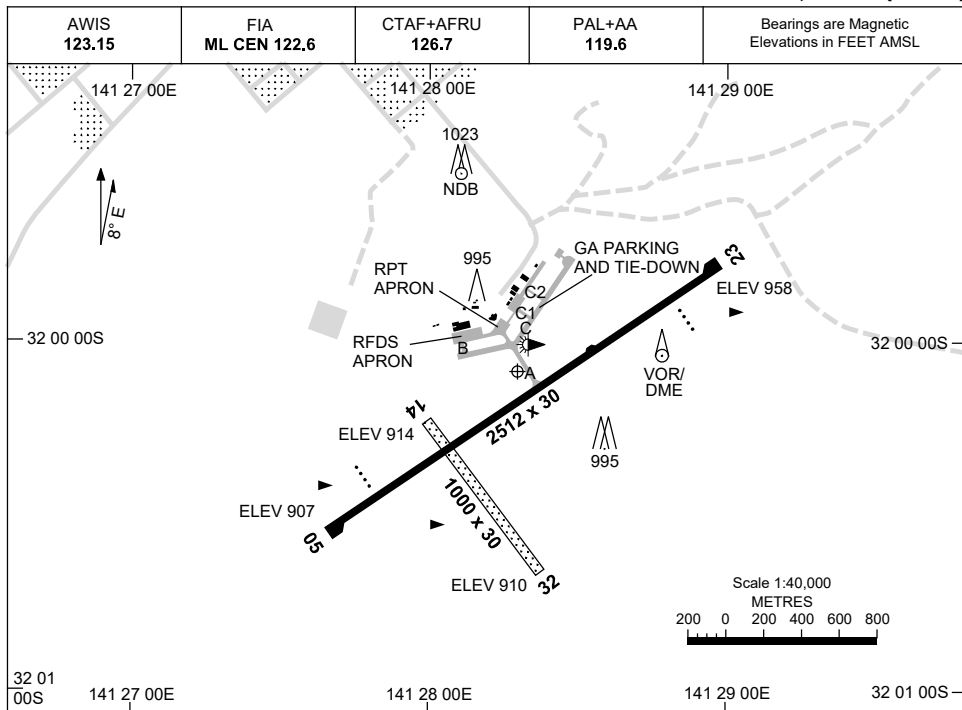


8 SEP 2022

AD ELEV 959
32 00 05S 141 28 18E

AERODROME CHART
BROKEN HILL, NSW (YBHI)



	AERODROME LIGHTING
RWY	TAXIWAY : BLUE EDGE ON TWY A, B, C AND C1 RL : PAL+AA 119.6 , SDBY , PTBL (EMERG ONLY, 90 MIN PN)
05 ⁰⁴⁷	PAPI 3.0° 47FT LIRL PTBL
227 23	PAPI 3.0° 47FT LIRL PTBL
14 ¹³⁴	PTBL
314 32	PTBL

NOTE

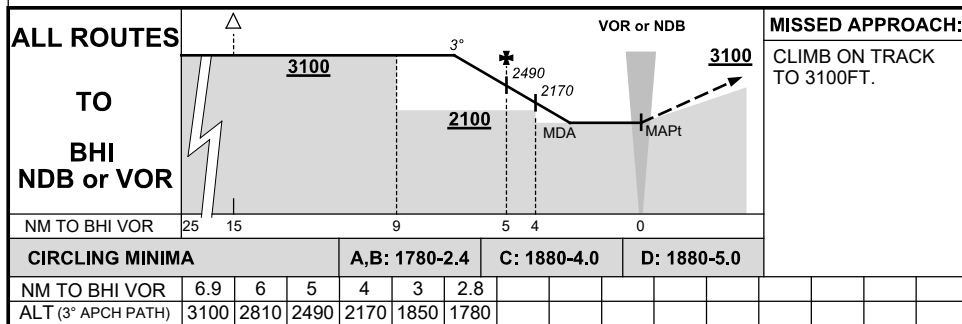
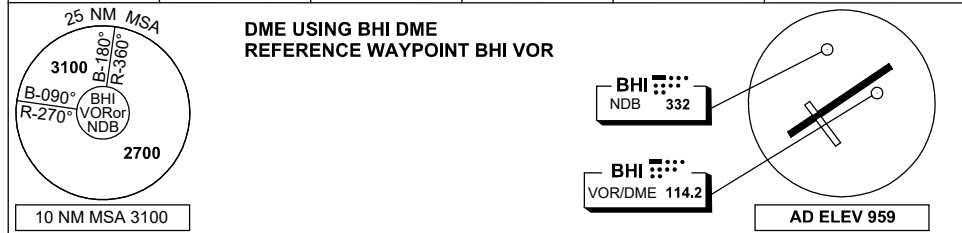
Changes: PTBL LIGHTING PN

BHIAD01-172

DME or GNSS ARRIVAL PROCEDURES BROKEN HILL, NSW (YBHI)

16 JUN 2022

AWIS 123.15	FIA ML CEN 122.6	CTAF+AFRU 126.7	PAL+AA 119.6		Bearings are Magnetic Elevations in FEET AMSL
----------------	---------------------	--------------------	-----------------	--	--

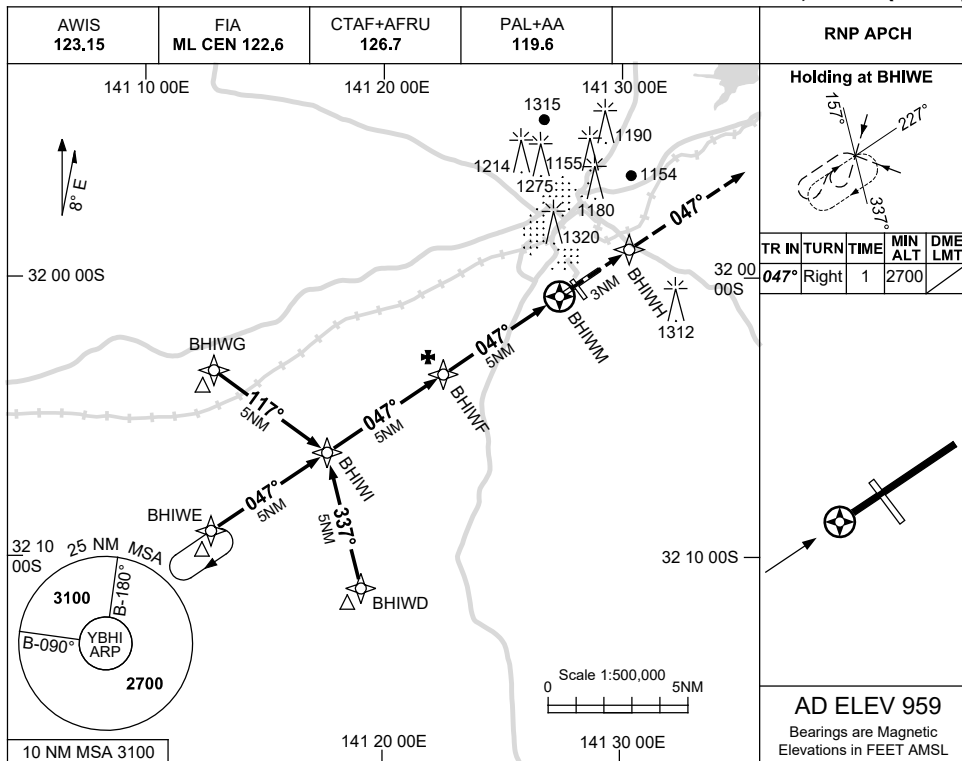


USE QNH

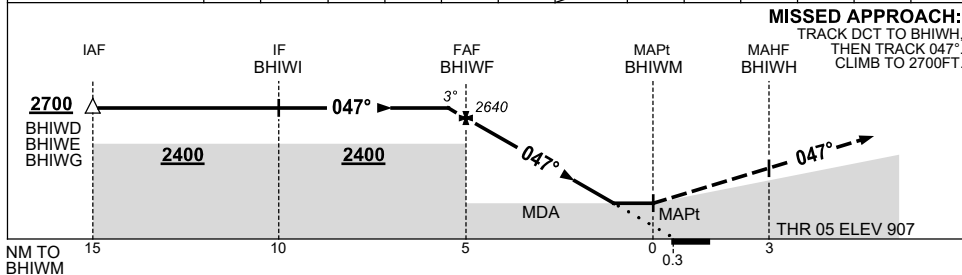
RNP RWY 05

1 DEC 2022

BROKEN HILL, NSW (YBHI)



NM TO NEXT WPT	0.2	BHIWF	4	3	2	1.3	BHIWM						
ALT (3° APCH PATH)	2700	2640	2320	2000	1680	1470							



NOTES

CATEGORY	A	B	C	D
LNAV	1470 (563-3.2)			
CIRCLING	1720 (761-2.4)	1880 (921-4.0)	1880 (921-5.0)	
ALTERNATE	(1261-4.4)	(1421-6.0)	(1421-7.0)	

1. MAX IAS:
INITIAL : 210KT.

Changes: CHART TITLE, PBN SPECIFICATION BOX.

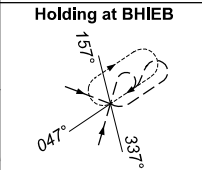
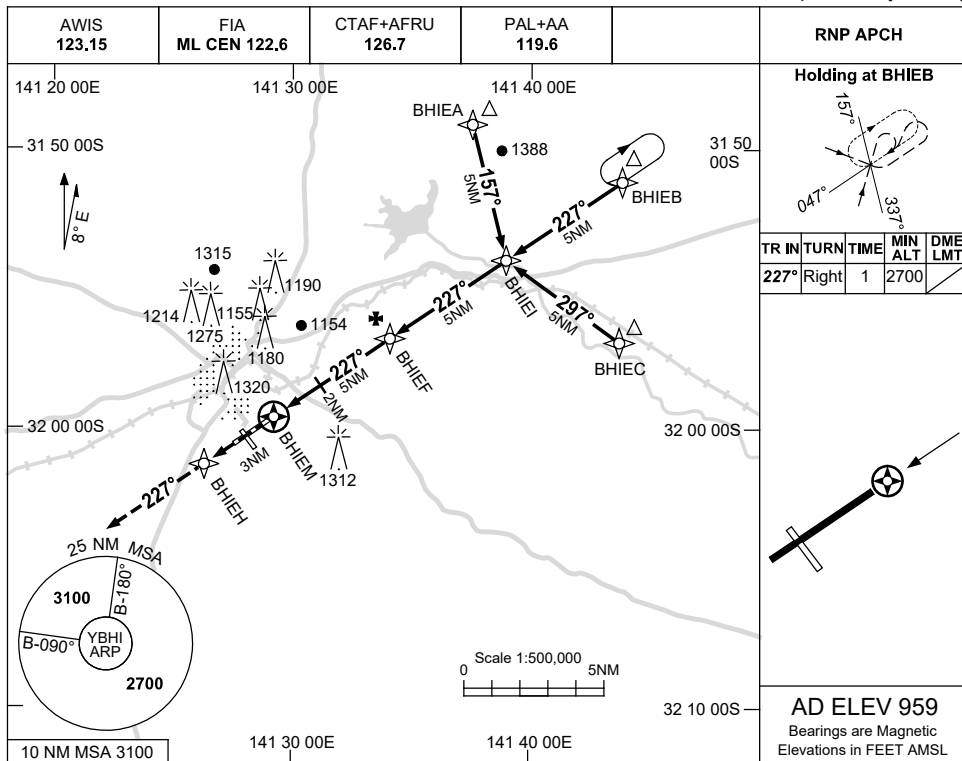
BHIGN01-173

USE QNH

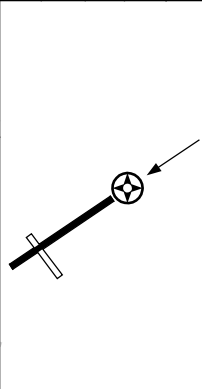
RNP RWY 23

BROKEN HILL, NSW (YBHI)

1 DEC 2022

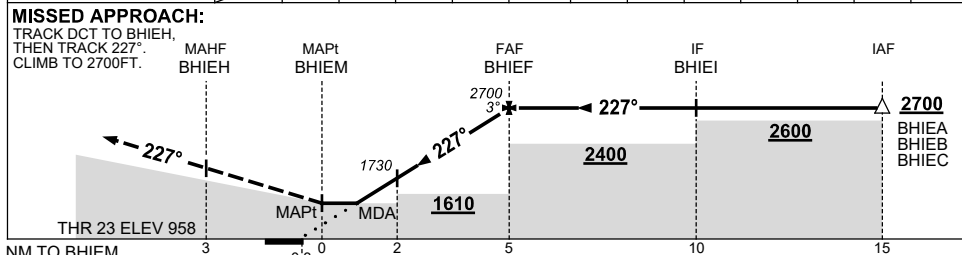


TR	IN	TURN	TIME	MIN ALT	DME LMT
227°	Right	1		2700	



AD ELEV 959
Bearings are Magnetic
Elevations in FEET AMSL

NM TO NEXT WPT	BHIEM	1.4	2	3	4	BHIIEF				
ALT (3° APCH PATH)		1540	1730	2050	2370	2700				



NOTES

CATEGORY	A	B	C	D
LNAV	1540 (581-3.3)			
CIRCLING	1720 (761-2.4)	1880 (921-4.0)	1880 (921-5.0)	
ALTERNATE	(1261-4.4)	(1421-6.0)	(1421-7.0)	

1. MAX IAS:
INITIAL : 210KT.

Changes: CHART TITLE, PBN SPECIFICATION BOX.

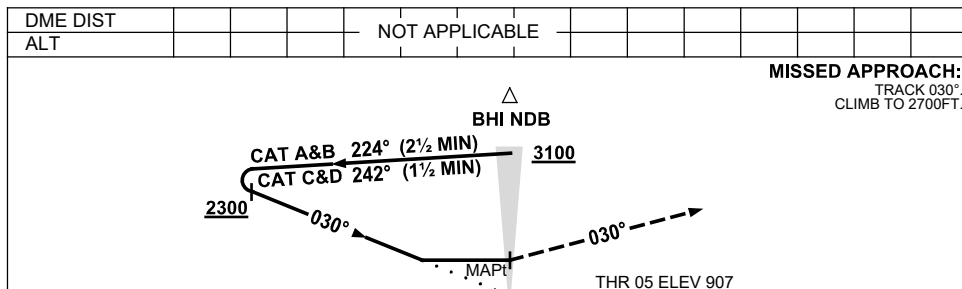
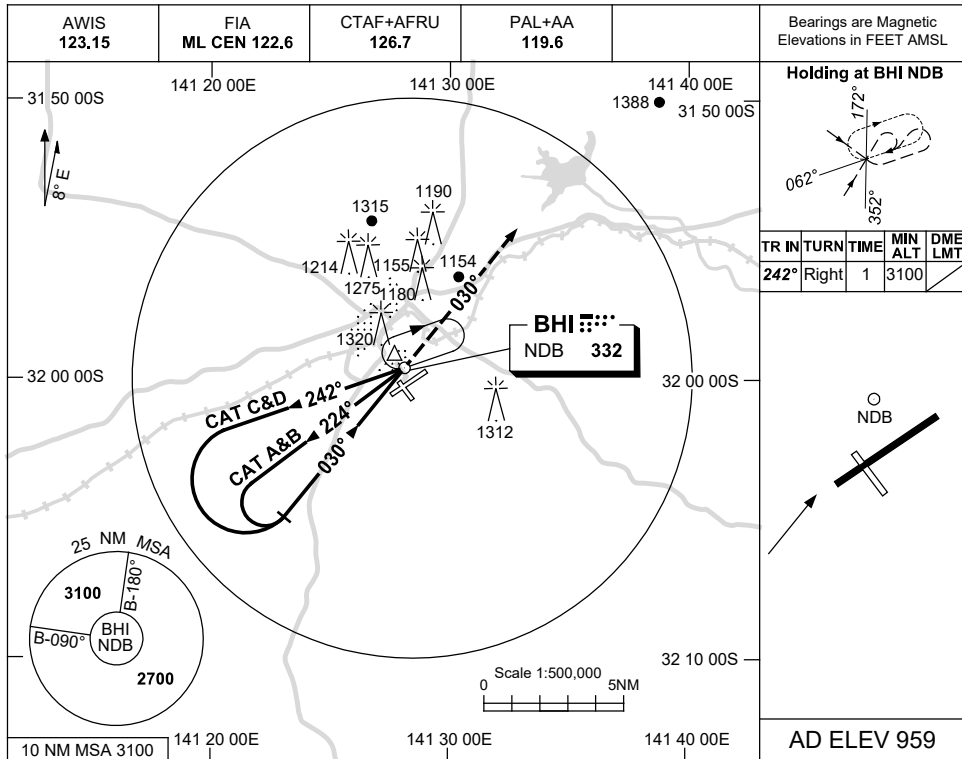
BHIGN02-173

USE QNH

NDB RWY 05

BROKEN HILL, NSW (YBHI)

16 JUN 2022



NOTES

CATEGORY	A	B	C	D
S-I NDB	1580 (673-3.8)		NOT APPLICABLE	
CIRCLING	1720 (761-2.4)		1880 (921-4.0)	1880 (921-5.0)
ALTERNATE	(1261-4.4)		(1421-6.0)	(1421-7.0)

- MAX IAS:
BASE TURN :
CAT C&D 210KT.

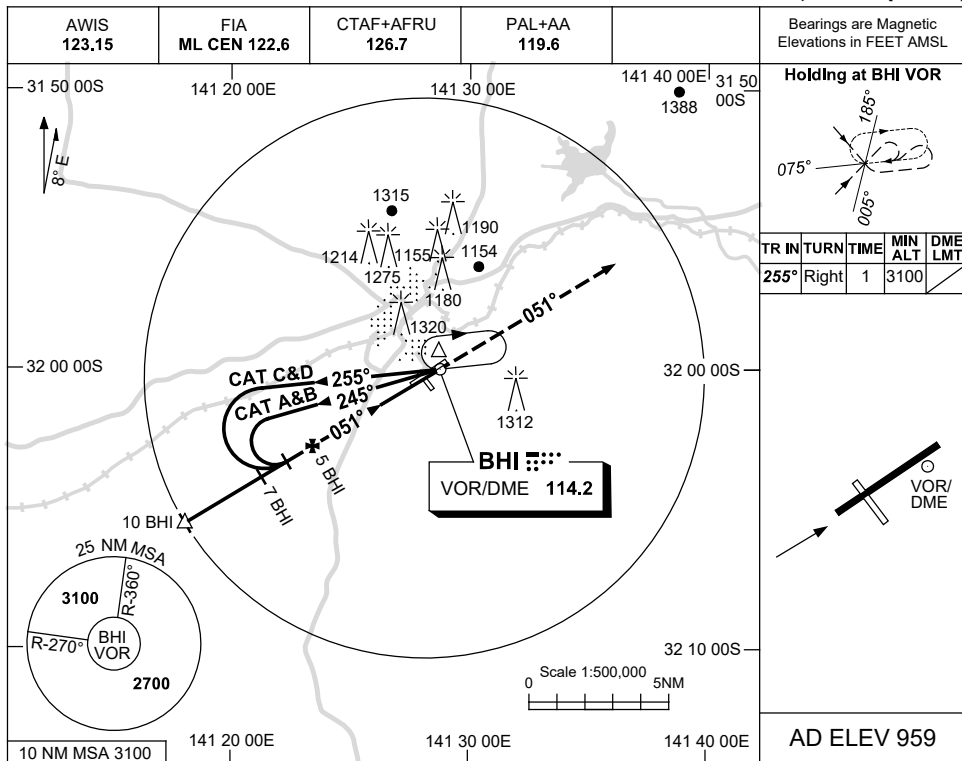
Changes:PAL+AA.

BHINB01-171

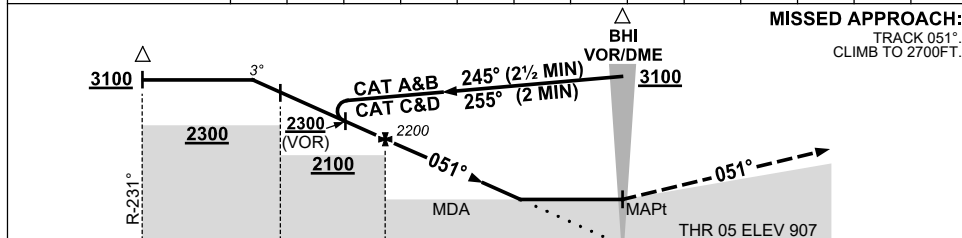
USE QNH

VOR RWY 05
BROKEN HILL, NSW (YBHI)

16 JUN 2022



DIST TO BHI DME	7.8	7	6	5	4	3	2.9						
ALT (3° APCH PATH)	3100	2840	2520	2200	1890	1570	1530						



NM TO BHI DME	10	7	5	0			
---------------	----	---	---	---	--	--	--

NOTES

CATEGORY	A	B	C	D
S-I VOR		1580 (673-3.8)		
S-I VOR/DME		1530 (623-3.5)		
CIRCLING	1720 (761-2.4)		1880 (921-4.0)	1880 (921-5.0)
ALTERNATE	(1261-4.4)		(1421-6.0)	(1421-7.0)

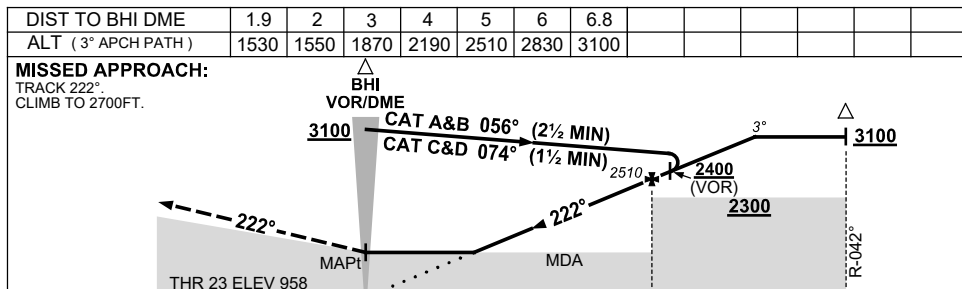
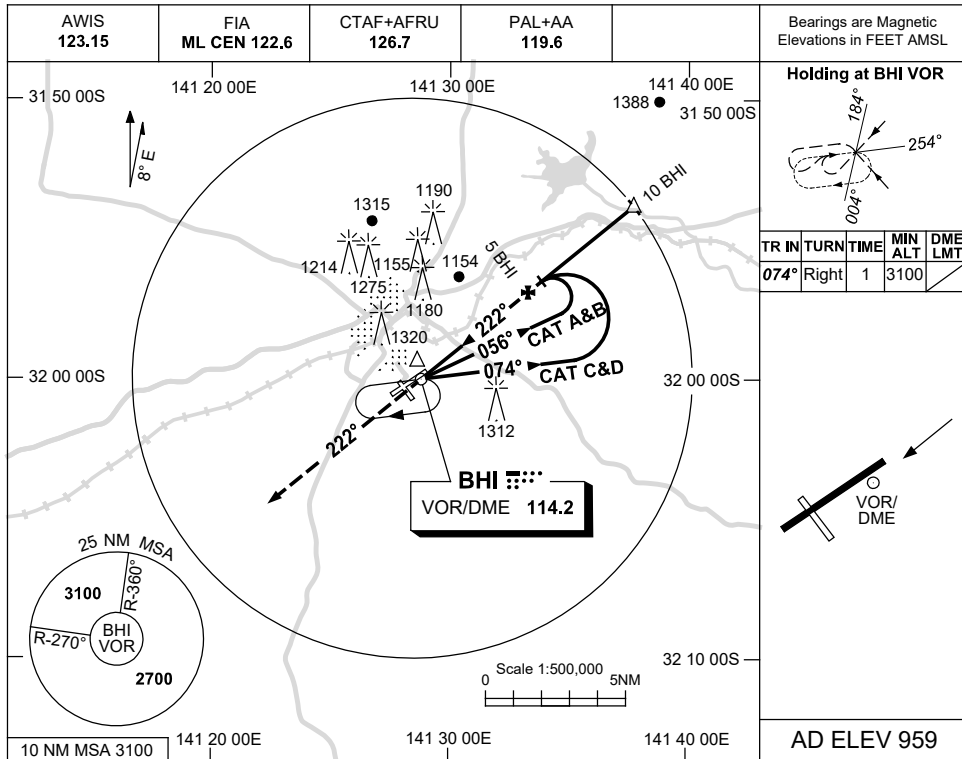
Changes: PAL+AA. BHIVO01-171

USE QNH

VOR RWY 23

BROKEN HILL, NSW (YBHI)

16 JUN 2022



NOTES

CATEGORY	A	B	C	D
S-I VOR		1710 (751-4.3)		
S-I VOR/DME		1530 (571-3.2)		
CIRCLING	1720 (761-2.4)		1880 (921-4.0)	1880 (921-5.0)
ALTERNATE	(1261-4.4)		(1421-6.0)	(1421-7.0)

1. MAX IAS:
BASE TURN: 210KT
2. SCALLOPING MAY OCCUR ON FINAL.

Changes: PAL+AA.

BHIVO02-171