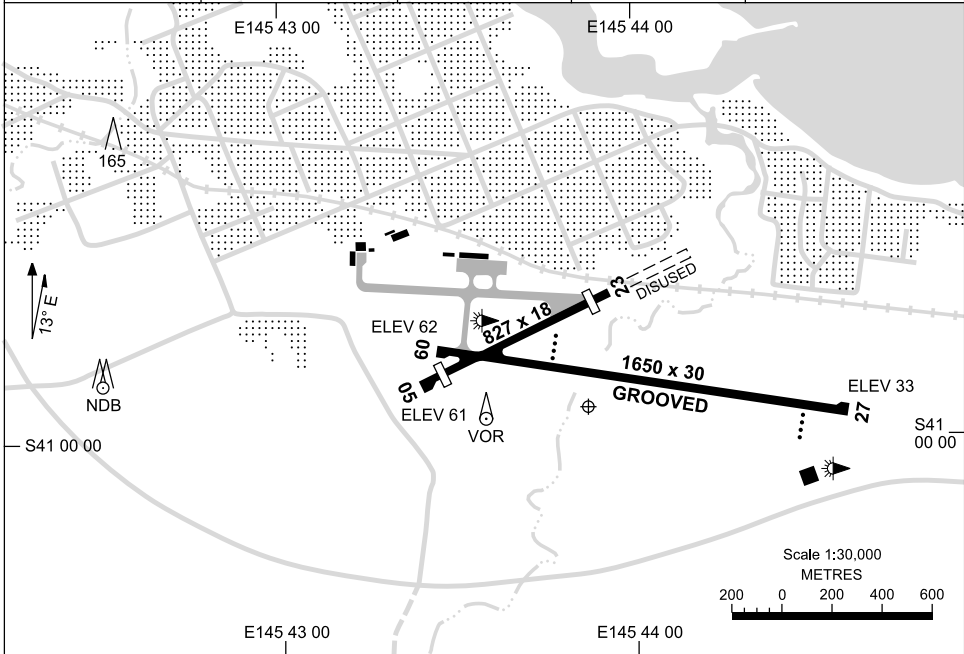


25 AUG 2011

AD ELEV 62
S40 59 56 E145 43 52

AERODROME CHART
WYNYARD, TAS (YWYY)

FIA ML CEN 122.6	AWIS 115.8 302	CTAF+AFRU 126.9	PAL 126.9	Bearings are Magnetic Elevations in FEET AMSL
---------------------	-------------------	--------------------	--------------	--



RWY		AERODROME LIGHTING
		TAXIWAY : SIDELINE BLUE RL : PILOT ACTIVATED 126.9
09 ⁰⁸⁶		PAPI 3.0° 41FT LIRL
266 27		PAPI 3.0° 41FT LIRL
05 ⁰⁵²		NIL
232 23		NIL

NOTES

- RIGHT HAND CIRCUITS RWYS 23 & 27.
- CAUTION:** OLD RWY 08 NOW E/W TWY, CAN BE MISTAKEN FOR RWY 09.
- RWY 05/23 LIMITED TO ACFT BLW 5700KG.
- RWY 23 DEP IN STRONG SW WINDS EXPECT DOWNDRAFTS AND MOD TO SEV TURB.

Changes: AFRU, PAL.

WYYAD01-128

GPS ARRIVAL PROCEDURES WYNYARD, TAS (WYYY) Page 1

25 AUG 2011

FIA ML CEN 122.6	AWIS 115.8 302	CTAF+AFRU 126.9	PAL 126.9	Bearings are Magnetic Elevations in FEET AMSL
---------------------	-------------------	--------------------	--------------	--

25 NM MSA

3000

R-260° WYYY R-085°
B-080° VOR B-265°

5500

GPS REFERENCE WAYPOINT WYY VOR

WYYY NDB 302

WYYY VOR 115.8

NO CIRCLING

10 NM MSA 3100

* NO CIRCLING SOUTH OF
RWY 09/27 & RWY 05/23.

AD ELEV 62

KII TO WYY

3000

2100

1500

MDA

3000

115°

WYY VOR or NDB

VOR or NDB

3°

1910

MDA

MAPt

070°

MISSED APPROACH:

TURN LEFT,
TRACK 070°. CLIMB TO 3000FT.

NM FM VOR	KII	15																	
CIRCLING MINIMA			A,B: 1170-2.4			C: 1270-4.0			D: N/A										
NM FM VOR	8.4	8	7	6	5	4	3	2.7											
ALT (3° APCH PATH)	3000	2870	2550	2230	1910	1600	1270	1170											

DPO TO WYY

3700

2000

1500

MDA

3000

275°

WYY VOR or NDB

VOR or NDB

3°

1910

MDA

MAPt

340°

MISSED APPROACH:

TURN RIGHT,
TRACK 340°. CLIMB TO 3000FT.

NM FM VOR	DPO	15																	
CIRCLING MINIMA			A,B: 1170-2.4			C: 1270-4.0			D: N/A										
NM FM VOR	10.6	10	9	8	7	6	5	4	3	2.7									
ALT (3° APCH PATH)	3700	3500	3190	2870	2550	2230	1910	1600	1270	1170									

SECTOR A

3000

1700

1300

MDA

3000

155°

WYY VOR or NDB

VOR or NDB

3°

1910

MDA

MAPt

030°

MISSED APPROACH:

TURN LEFT,
TRACK 030°. CLIMB TO 3000FT.

NM FM VOR	25	15																	
CIRCLING MINIMA			A,B: 1170-2.4			C: 1270-4.0			D: N/A										
NM FM VOR	8.4	8	7	6	5	4	3	2.7											
ALT (3° APCH PATH)	3000	2870	2550	2230	1910	1600	1270	1170											

WYYDG01-128



GPS ARRIVAL PROCEDURES WYNYARD, TAS (YWYY) Page 2

25 AUG 2011

FIA ML CEN 122.6	AWIS 115.8 302	CTAF+AFRU 126.9	PAL 126.9	Bearings are Magnetic Elevations in FEET AMSL
---------------------	-------------------	--------------------	--------------	--

25 NM MSA

10 NM MSA 3100

GPS REFERENCE WAYPOINT WYY VOR (CONTINUED)

AD ELEV 62

IRONS TO WYY

MISSED APPROACH:

TRACK 312°.
CLIMB TO 3000FT.

NM FM VOR	32	17	15	12	6	5	4	0							
CIRCLING MINIMA	A,B: 1400-2.4			C: 1400-4.0			D: N/A								
NM FM VOR	14.8	14	13	12	11	10	9	8	7	6	5	4	3	2	1.9
ALT (3° APCH PATH)	5500	5240	4930	4610	4290	3970	3650	3340	3020	2700	2380	2060	1750	1430	1400

DME ARRIVAL PROCEDURE USING DPO DME (116.3)

DPO TO WYY

MISSED APPROACH:

TURN RIGHT,
TRACK 340°.
CLIMB TO 3000FT.

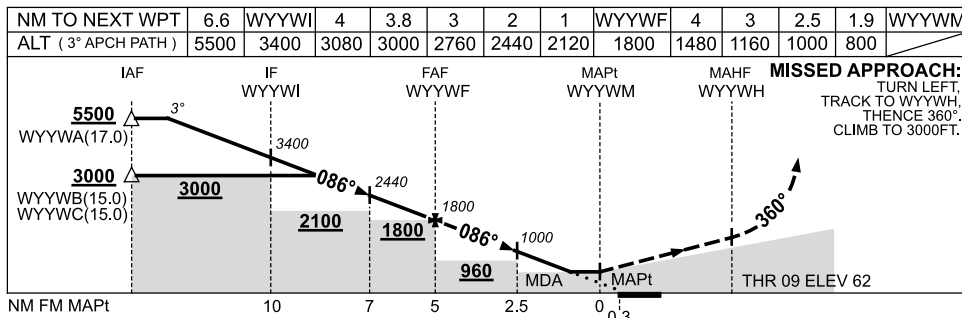
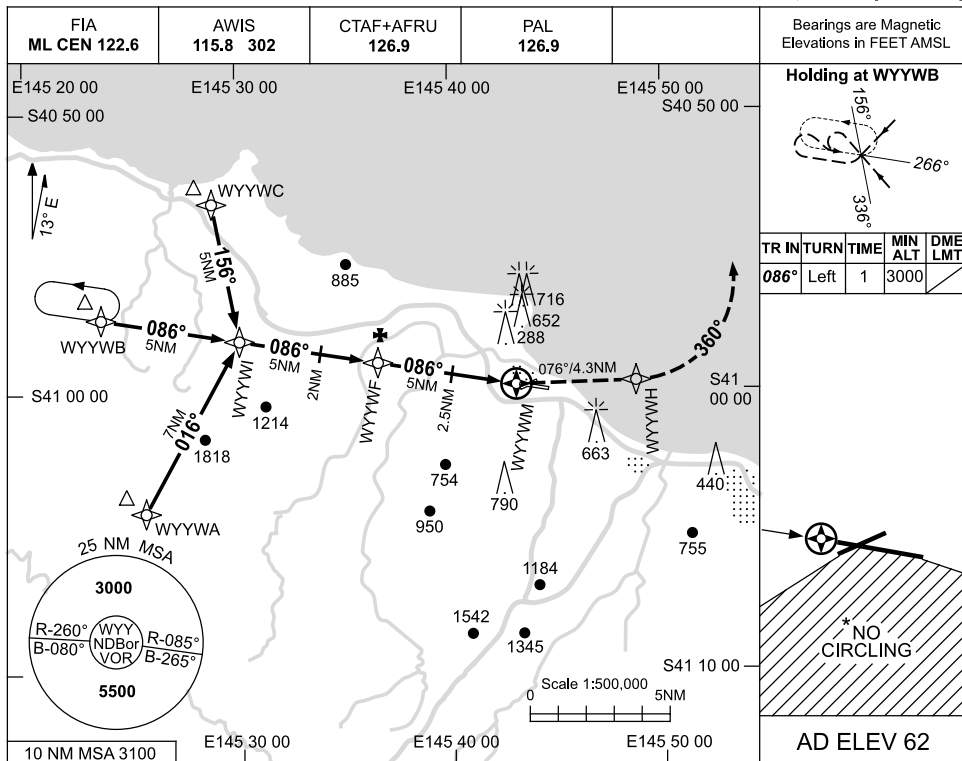
NM FM VOR	0	19	25	29	34										
CIRCLING MINIMA	A,B: 1170-2.4			C: 1270-4.0			D: N/A								
DME FM DPO	23.4	24	25	26	27	28	29	30	31	31.3					
ALT (3° APCH PATH)	3700	3500	3190	2870	2550	2230	1910	1600	1270	1170					

WYYDG02-128

USE QNH

RNAV_(GNSS) RWY 09
WYNYARD, TAS (WYNY)

25 AUG 2011



NOTES

CATEGORY	A	B	C	D
S-I GNSS	800 (738-4.1)			NOT APPLICABLE
CIRCLING *	1170 (1108-2.4)		1270 (1208-4.0)	
ALTERNATE	(1608-4.4)		(1708-6.0)	

1. MAX IAS:
INITIAL : 210KT.
- *2. NO CIRCLING SOUTH OF RWY 09/27 & RWY 05/23.

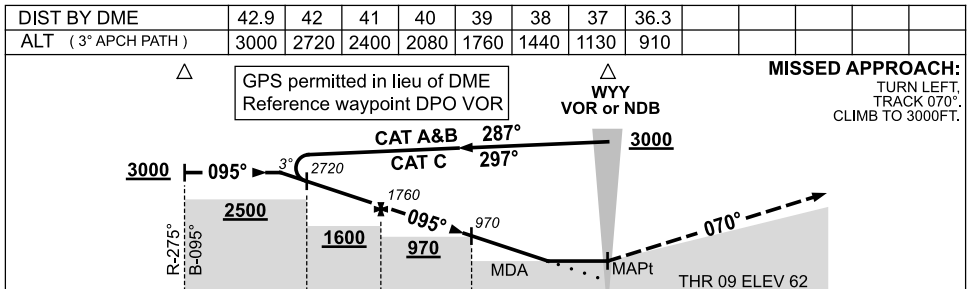
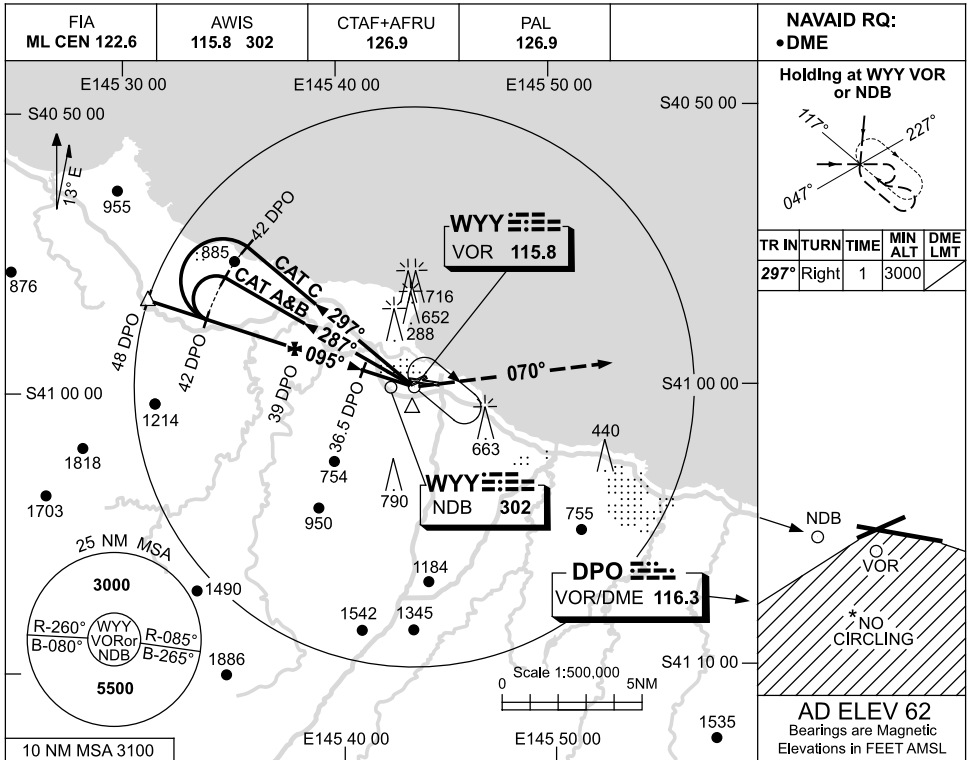
Changes: AFRU, PAL.

WYNYG01-128

USE QNH

NDB or VOR RWY 09
WYNYARD, TAS (YWYY)

25 AUG 2011



CATEGORY	A	B	C	D
S-I VOR/DME or NDB/DME	910 (848-4.8)			NOT APPLICABLE
CIRCLING *	1170 (1108-2.4)		1270 (1208-4.0)	
ALTERNATE	(1608-4.4)		(1708-6.0)	

NOTES
 1. MAX IAS: INITIAL : 210KT.
 *2. NO CIRCLING SOUTH OF RWY 09/27 & RWY 05/23.

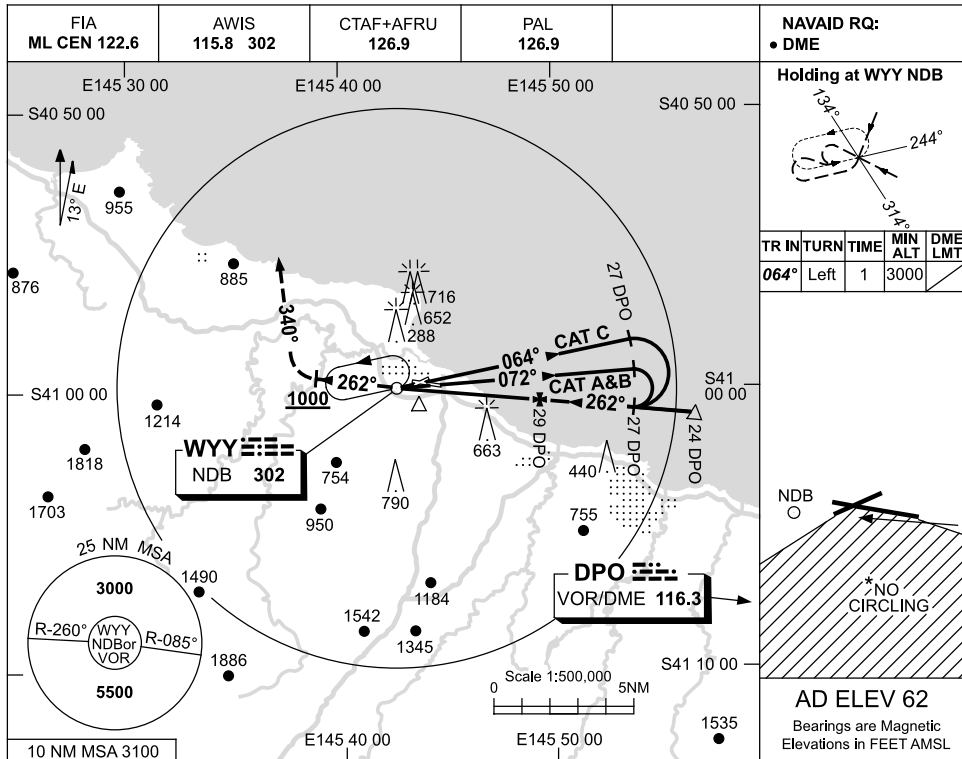
Changes: AFRU, PAL.

WYYNB01-128

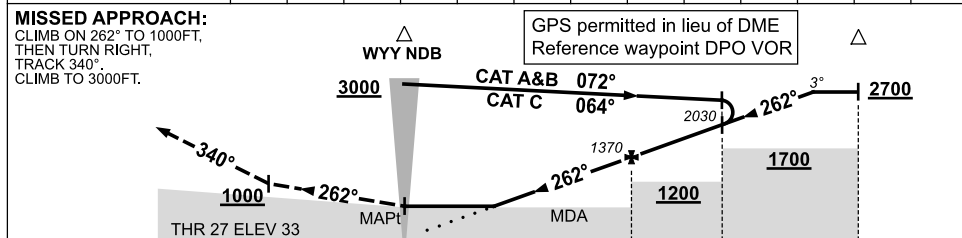
USE QNH

NDB-Z RWY 27
WYNYARD, TAS (YWYY)

25 AUG 2011



DIST BY DME	30.3	29.8	29	28	27	26	25				
ALT (3° APCH PATH)	960	1100	1370	1700	2030	2360	2700				



NM BY DME FROM DPO

NOTES

CATEGORY	A	B	C	D
S-I NDB/DME	960 (927-5.0)			NOT APPLICABLE
CIRCLING*	1170 (1108-2.4)		1270 (1208-4.0)	
ALTERNATE	(1608-4.4)		(1708-6.0)	

1. MAX IAS:
 INITIAL :
 CAT A&B 140KT.
 CAT C 210KT.
- * 2. NO CIRCLING SOUTH OF RWY 09/27 & RWY 05/23.

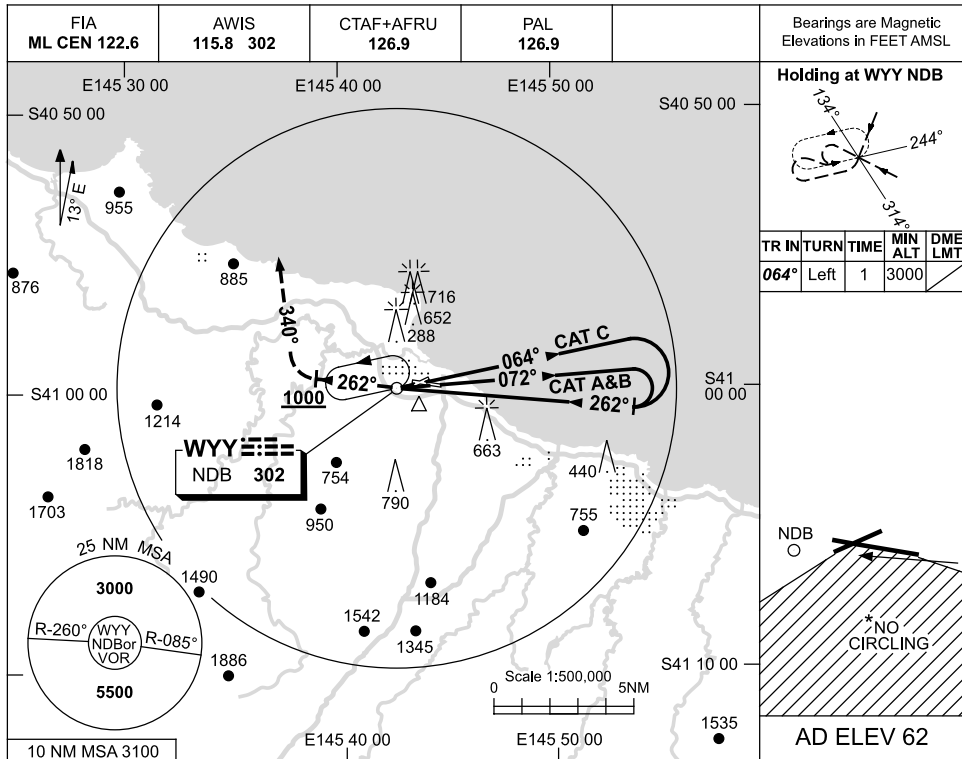
Changes: AFRU, PAL.

WYNYNB02-128

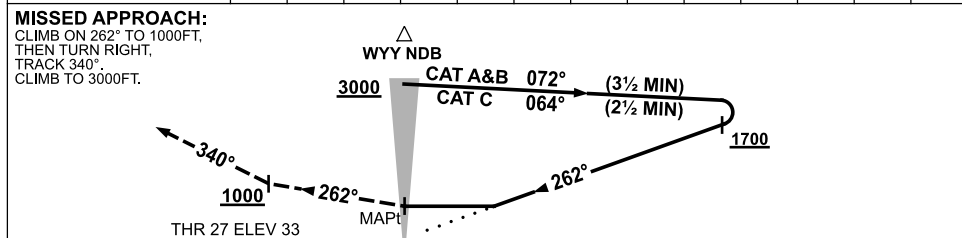
USE QNH

NDB-Y RWY 27
WYNYARD, TAS (YWYY)

25 AUG 2011



DIST BY DME					NOT APPLICABLE
ALT					



NOTES

CATEGORY	A	B	C	D
S-I NDB	1100 (1067-5.0)			NOT APPLICABLE
CIRCLING*	1170 (1108-2.4)	1270 (1208-4.0)		
ALTERNATE	(1608-4.4)	(1708-6.0)		

1. MAX IAS:
 INITIAL :
 CAT A&B 140KT.
 CAT C 210KT.
- * 2. NO CIRCLING SOUTH OF RWY 09/27 & RWY 05/23.

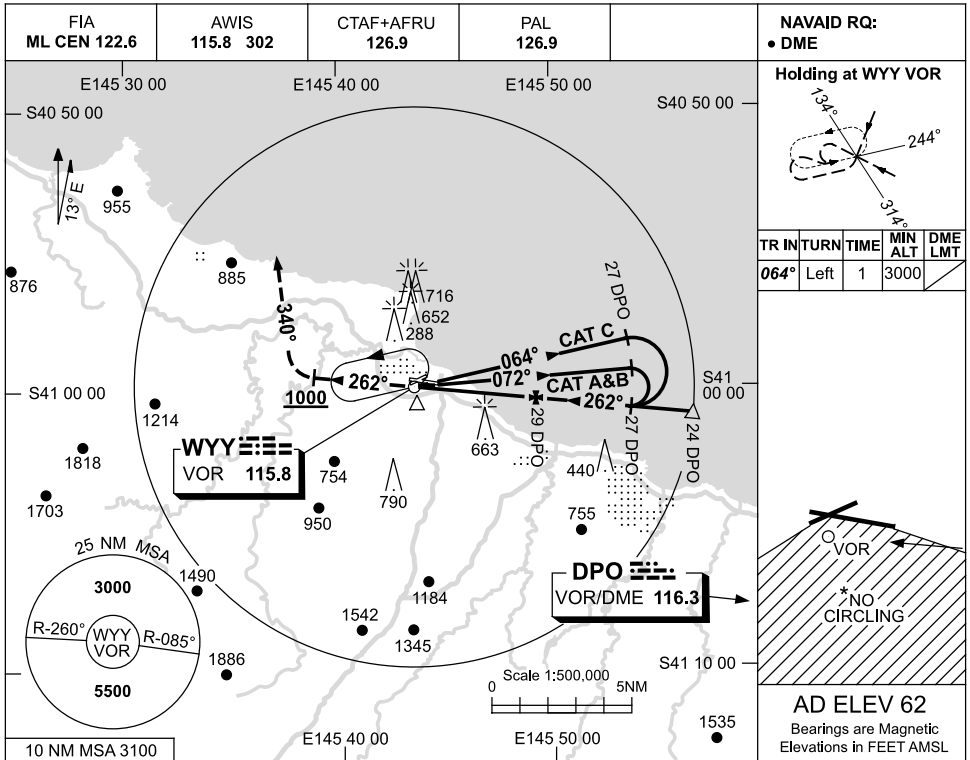
Changes: AFRU, PAL.

WYNYNB03-128

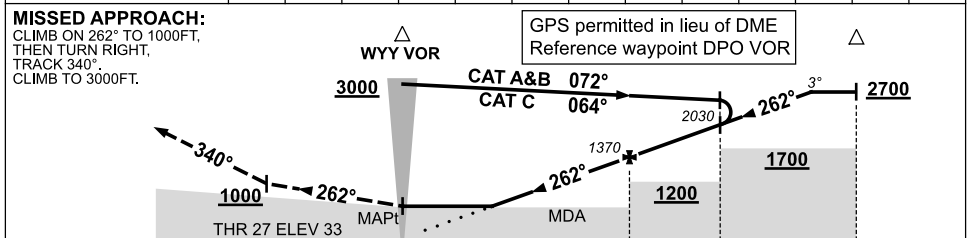
USE QNH

VOR-Z RWY 27
WYNYARD, TAS (YWYY)

25 AUG 2011



DIST BY DME	31	29.8	29	28	27	26	25				
ALT (3° APCH PATH)	720	1100	1370	1700	2030	2360	2700				



NOTES

CATEGORY	A	B	C	D
S-I VOR/DME	720 (687-3.8)			NOT APPLICABLE
CIRCLING*	1170 (1108-2.4)		1270 (1208-4.0)	
ALTERNATE	(1608-4.4)		(1708-6.0)	

1. MAX IAS:
 INITIAL :
 CAT A&B 140KT.
 CAT C 210KT.
- * 2. NO CIRCLING SOUTH OF RWY 09/27 & RWY 05/23.

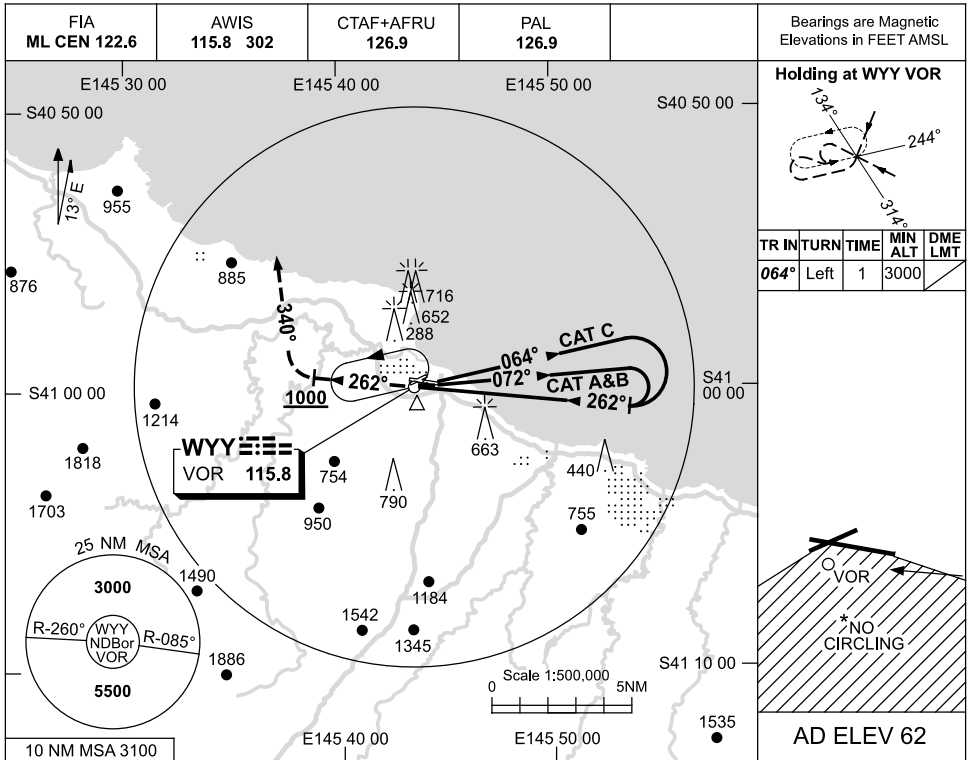
Changes: AFRU, PAL.

WYVVO02-128

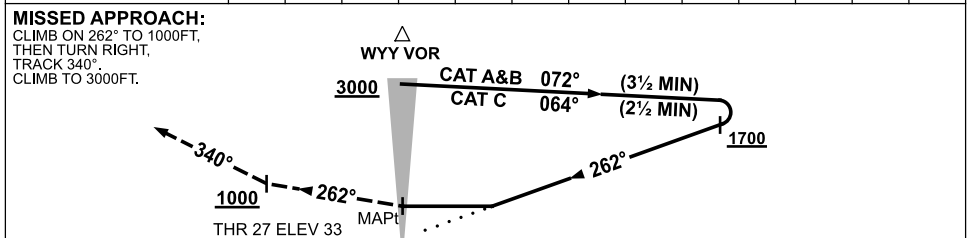
USE QNH

VOR-Y RWY 27
WYNYARD, TAS (YWYY)

25 AUG 2011



DIST BY DME					NOT APPLICABLE
ALT					



NOTES

CATEGORY	A	B	C	D
S-I VOR	1100 (1067-5.0)			NOT APPLICABLE
CIRCLING*	1170 (1108-2.4)	1270 (1208-4.0)		
ALTERNATE	(1608-4.4)	(1708-6.0)		

1. MAX IAS:
 INITIAL :
 CAT A&B 140KT.
 CAT C 210KT.
- * 2. NO CIRCLING SOUTH OF RWY 09/27 & RWY 05/23.

Changes: AFRU, PAL.

WYVVO03-128