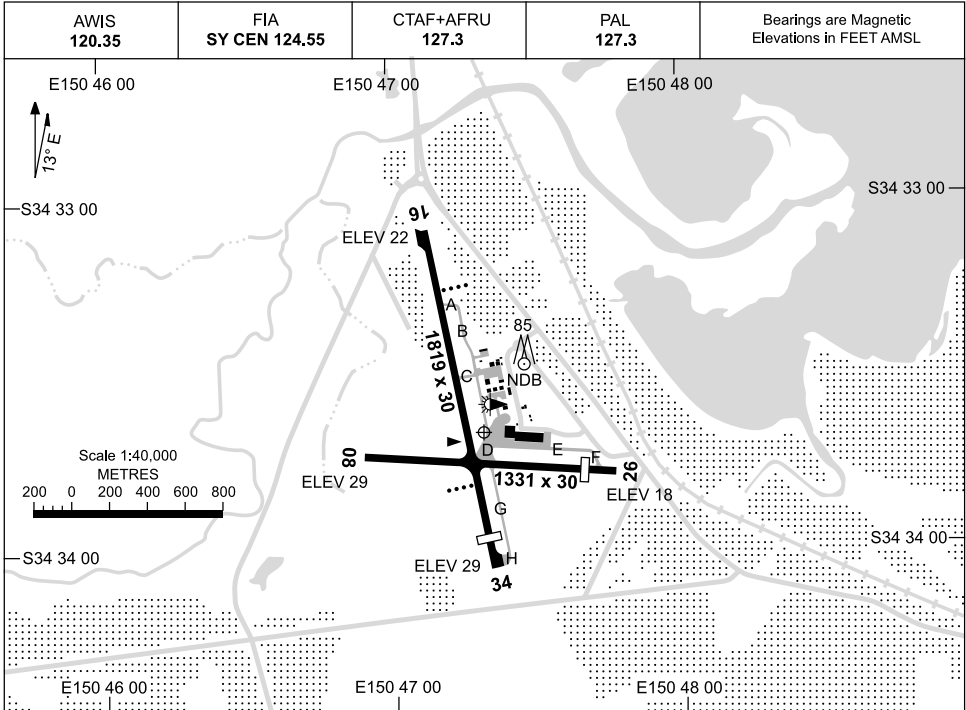


17 NOV 2011

AD ELEV 31
S34 33 40 E150 47 19

AERODROME CHART
WOLLONGONG, NSW (YWOL)



	AERODROME LIGHTING
RWY	TAXIWAY : SIDELINE BLUE TWY D, B BTN C AND D ONLY. RL : AFRU+PAL 127.3
16 <small>157</small>	PAPI LEFT SIDE 3.7° 69FT LIRL
<small>337</small> 34	PAPI LEFT SIDE 3.4° 53FT LIRL
08 <small>081</small>	NIL
<small>261</small> 26	NIL

NOTES	<ol style="list-style-type: none"> 1. RIGHT HAND CIRCUITS RWY 26 AND 34. 2. RWY 34 PAPI OFFSET 5 DEG WEST. 3. NIGHT OPS RPT OR ACFT ABV 5700KG MTOW REQUIRE CASA APPROVAL. 4. - ULTRALIGHT ACFT TRAINING <ul style="list-style-type: none"> - PJE OPS 500M N OF WOLLONGONG LIGHT HOUSE, EXIT HEIGHT UP TO FL140 - PJE OPS 1000M N OF WOLLONGONG LIGHT HOUSE, EXIT HEIGHT UP TO FL140. 5. AWIS (PHONE) 02 4256 0312 6. AWIS 120.35 ACTIVATED BY 1 SEC TRANSMISSION.
--------------	---------------------------------------------------------------------------------------------------------------------------------------------------------------------------------------------------------------------------------------------------------------------------------------------------------------------------------------------------------------------------------------------------------------------------------------------------------------------------------------------------------------------------------------------------------------------

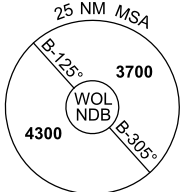
Changes: NOTE 6, NOTE 7, PTBL REMOVED, AWIS (PHONE), LOGO, Editorial.

WOLAD01-129

GPS ARRIVAL PROCEDURES WOLLONGONG, NSW (YWOL)

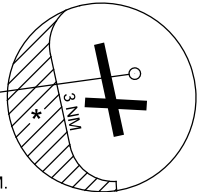
17 NOV 2011

AWIS 120.35	FIA SY CEN 124.55	CTAF+AFRU 127.3	PAL 127.3		Bearings are Magnetic Elevations in FEET AMSL
----------------	----------------------	--------------------	--------------	--	--------------------------------------------------



GPS REFERENCE WAYPOINT WOL NDB

AWIS (PHONE) 02 4256 0312



* NO CIRCLING WEST OF RWAY 16/34 BEYOND 3NM.

10 NM MSA 4300

AD ELEV 31

SECTOR A

MISSED APPROACH:

TURN LEFT,
TRACK 090°.
CLIMB TO 3700FT.

NOTE:
MAX IAS IN TURN
160KT.

NM FM NDB	25	15	7	5	4	0								
CIRCLING MINIMA	A,B: 1840-2.4			C: 1940-4.0		D: N/A								
NM FM NDB	7	6	5	4	3	2	1.4	1.1						
ALT (3° APCH PATH)	3700	3380	3070	2750	2430	2110	1930	1830						

SECTOR B

MISSED APPROACH:

TURN LEFT,
TRACK 090°.
CLIMB TO 3700FT.

NOTE:
MAX IAS IN TURN
160KT.

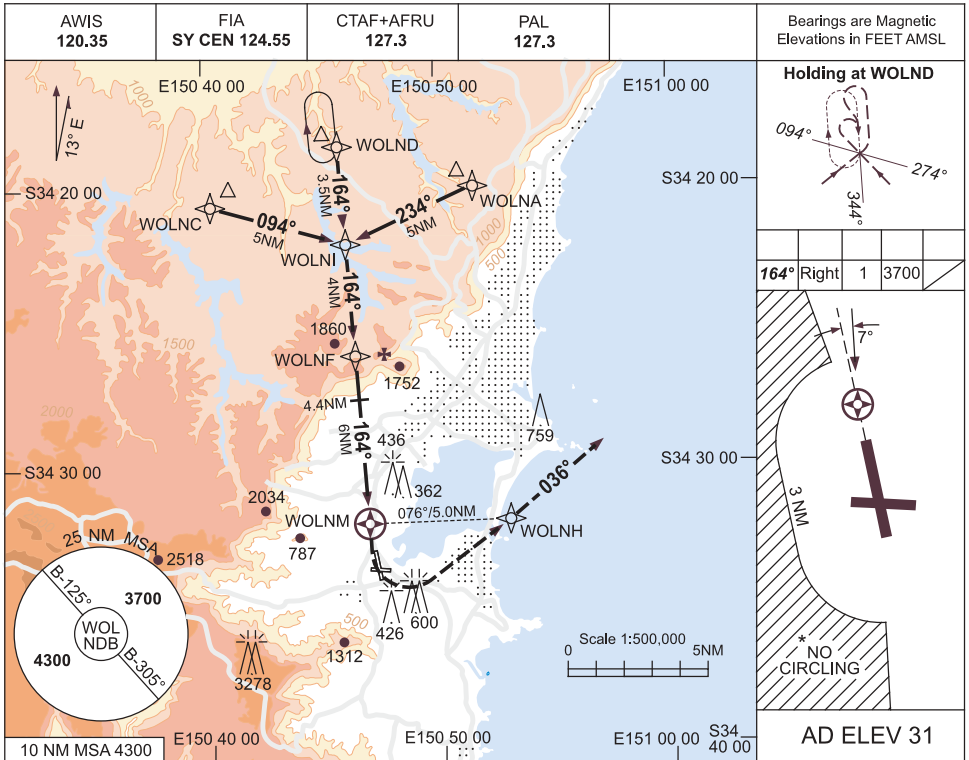
NM FM NDB	25	16	10	6	5	3	2	0						
CIRCLING MINIMA	A,B: 1840-2.4			C: 1940-4.0		D: N/A								
NM FM NDB	6.7	6	5	4	3	2	1.1	1	0.8					
ALT (3° APCH PATH)	3700	3480	3160	2840	2520	2200	1930	1890	1830					

WOLDG01-129

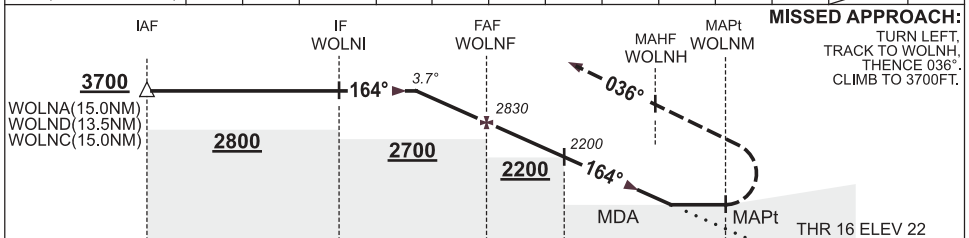
USE QNH

RNAV (GNSS) RWY 16
WOLLONGONG, NSW (YWOL)

17 NOV 2011



NM TO NEXT WPT	2.2	1	WOLNF	5	4.4	4	3.7	3.5	3	2	1.1	WOLNM
ALT (3.7° APCH PATH)	3700	3220	2830	2430	2200	2040	1930	1830	1650	1250	910	



NM FM MAPt		10	6	4.4	0	1.0
------------	--	----	---	-----	---	-----

CATEGORY	A	B	C	D
S-I GNSS	910 (888-5.0)		CIRCLING ONLY	NOT APPLICABLE
CIRCLING *	1840 (1809-2.4)		1940 (1909-4.0)	
ALTERNATE	(2309-4.4)		(2409-6.0)	

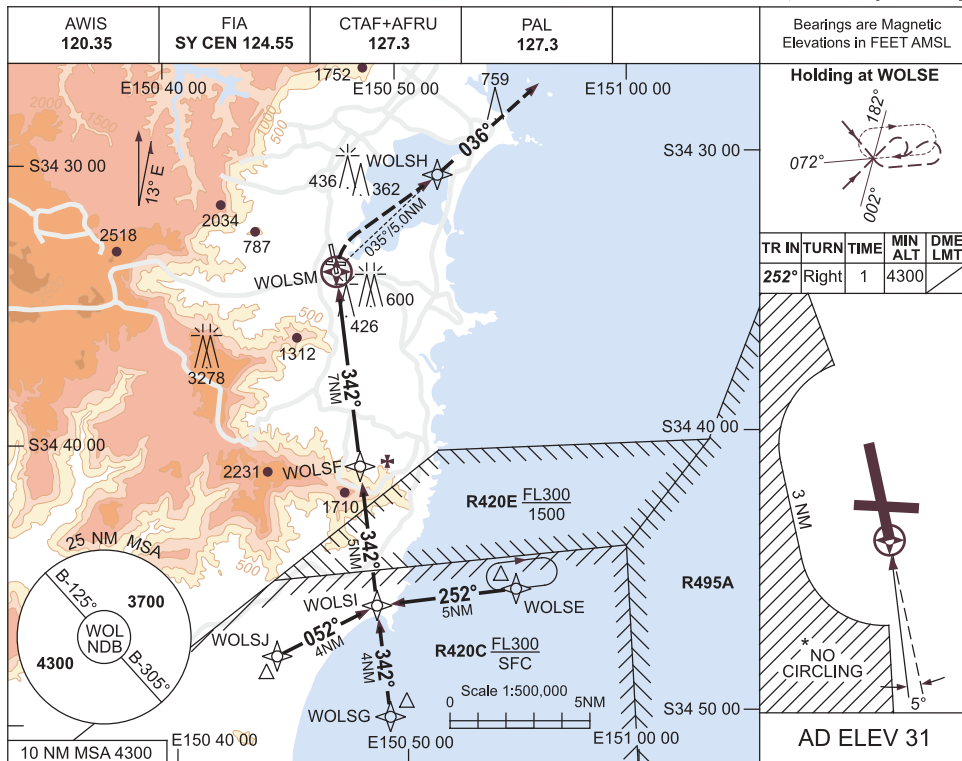
- NOTES**
- MAX IAS : **HOLDING : 190KT. MAP TURN: 190KT.**
 - NO CIRCLING WEST OF RWY 16/34 BEYOND 3NM.
 - APCH PATH ANGLE DOES NOT COINCIDE WITH PAPI ON GLIDE SLOPE INDICATION.
 - AWIS (PHONE) 02 4256 0312
 - COLOUR: SEE SPEC NOTICES.

Changes: AWIS (PHONE), LOGO, Editorial. WOLGN01-129

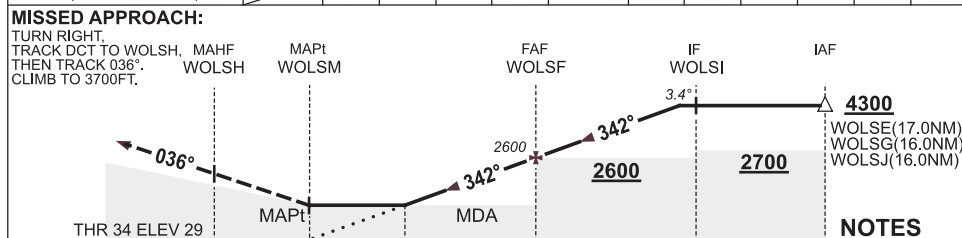
USE QNH

RNAV (GNSS) RWY 34
WOLLONGONG, NSW (YWOL)

17 NOV 2011



NM TO NEXT WPT	WOLSM	3.5	4	5	6	WOLSF	1	2	3	4	4.7
ALT (3.4° APCH PATH)		1340	1520	1880	2240	2600	2960	3320	3680	4040	4300



NM FM MAPt

1. ATC CLR RQ THRU R420. (NOWRA APP 123.5)
2. MAX IAS:
 INITIAL : 200KT.
 MAP TURN : 190KT.
- * 3. NO CIRCLING WEST OF RWY 16/34 BEYOND 3NM.
4. PROC ALIGNED WITH PAPI.
5. AWIS (PHONE)
 02 4256 0312
6. COLOUR: SEE SPEC NOTICES.

CATEGORY	A	B	C	D
S-I GNSS	1340 (1309-5.0)			NOT APPLICABLE
CIRCLING *	1840 (1809-2.4)		1940 (1909-4.0)	
ALTERNATE	(2309-4.4)		(2409-6.0)	

Changes: AWIS (PHONE), LOGO, Editorial.

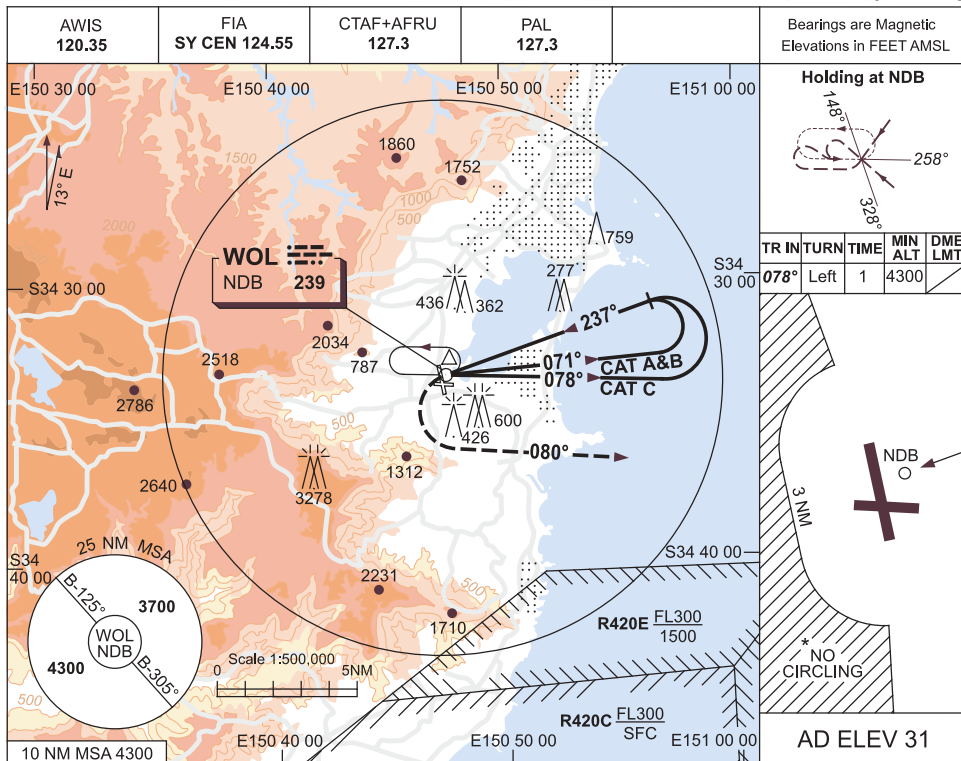
WOLGN02-129

USE QNH

NDB-A

WOLLONGONG, NSW (YWOL)

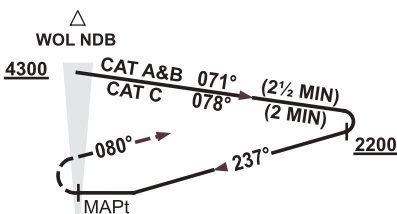
17 NOV 2011



DME DIST	NOT APPLICABLE									
ALT										

MISSED APPROACH:

TURN LEFT,
TRACK 080°.
CLIMB TO 3700FT.



NOTES

1. MAX IAS :
HOLDING : 180KT.
INITIAL :
CAT A&B : 140KT.
CAT C : 180KT.
MAP TURN: 180KT.
- * 2. NO CIRCLING WEST OF RWY 16/34 BEYOND 3NM.
3. AWIS (PHONE)
02 4256 0312
4. COLOUR: SEE SPEC NOTICES.

CATEGORY	A	B	C	D
				NOT APPLICABLE
CIRCLING *	1840 (1809-2.4)		1940 (1909-4.0)	
ALTERNATE	(2309-4.4)		(2409-6.0)	

Changes: AWIS (PHONE), LOGO, Editorial.

WOLNB01-129