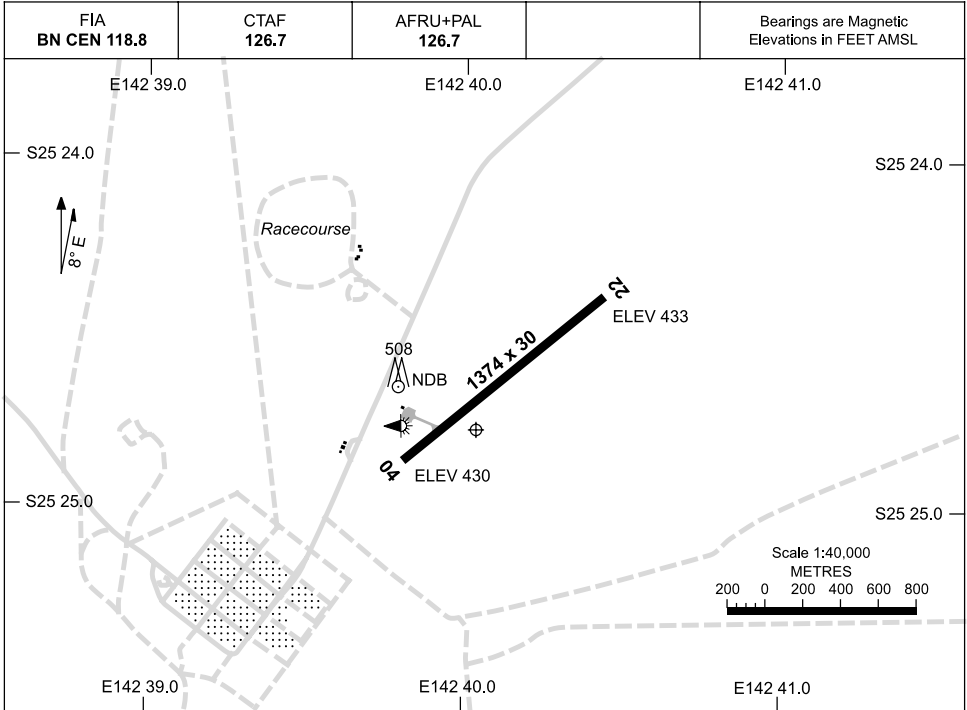


20 NOV 2008

AD ELEV 452
S25 24.8 E142 40.0

AERODROME CHART
WINDORAH, QLD (YWDH)



| | |
|--|---------------------------|
| | AERODROME LIGHTING |
| RWY | RL : AFRU+PAL 126.7 |
| 04 <small>042</small> 222 22 | LIRL |
| | |

NOTES

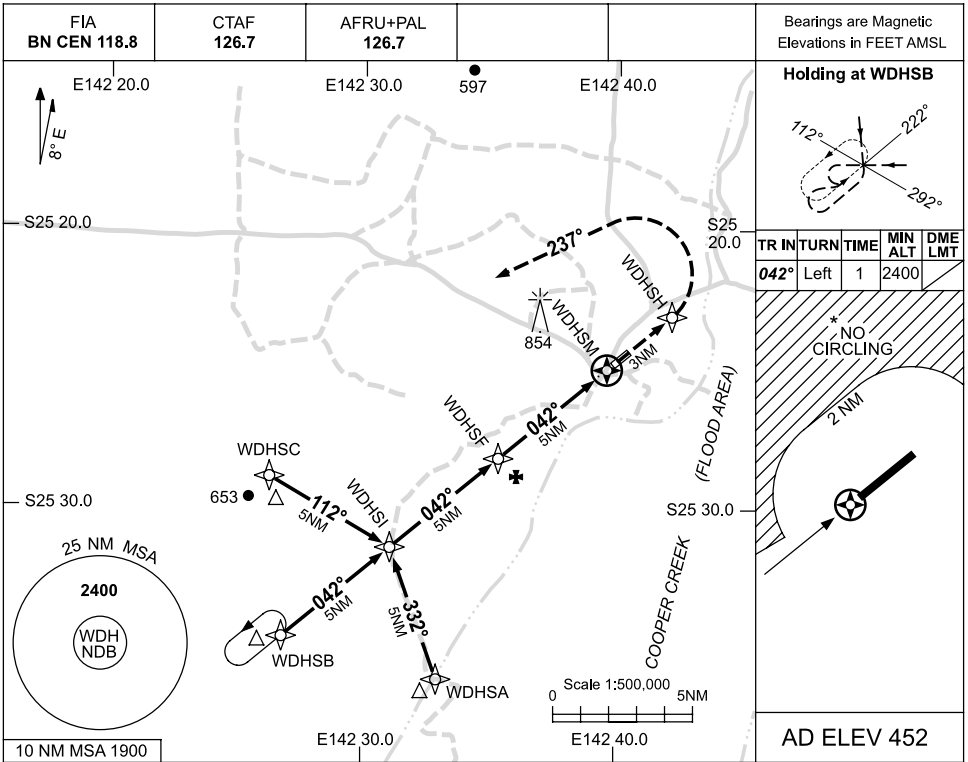
Changes: Editorial.

WDHAD01-117

USE QNH

RNAV (GNSS) RWY 04
WINDORAH, QLD (YWDH)

20 NOV 2008



Bearings are Magnetic
Elevations in FEET AMSL

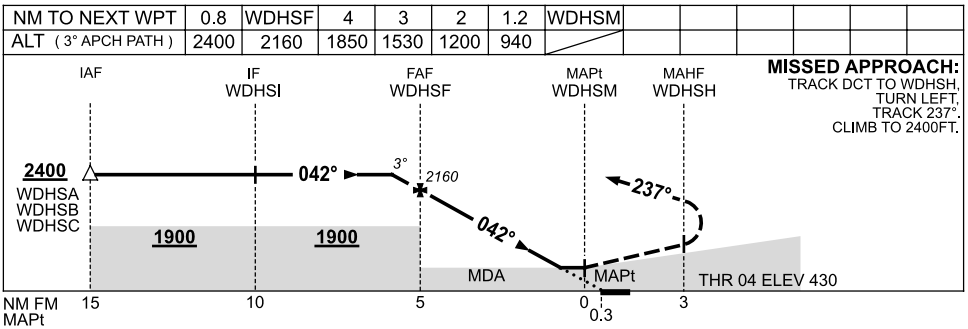
Holding at WDHSM

| TR | IN | TURN | TIME | MIN ALT | DME LMT |
|------|------|------|------|---------|---------|
| 042° | Left | 1 | 2400 | | |

* NO CIRCLING

2 NM

AD ELEV 452



NOTES

- 1. MAX IAS: INITIAL : 210KT.
- * 2. NO CIRCLING NORTH OF RWY 04/22 BEYOND 2NM.

| CATEGORY | A | B | C | D |
|------------|----------------|---|----------------|----------------|
| S-I GNSS | 940 (510-2.9) | | | NOT APPLICABLE |
| CIRCLING * | 1060 (608-2.4) | | 1160 (708-4.0) | |
| ALTERNATE | (1108-4.4) | | (1208-6.0) | |

Changes: PROC NAME, Editorial.

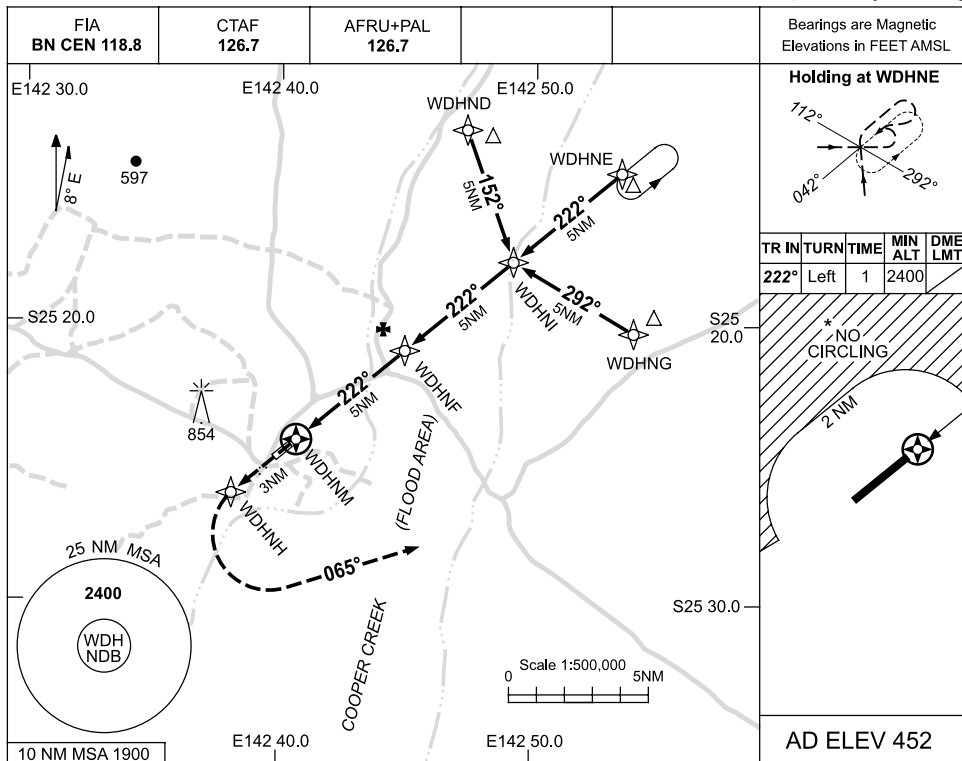
WDHGN01-117

USE QNH

RNAV_(GNSS)RWY 22

WINDORAH, QLD (YWDH)

20 NOV 2008



Bearings are Magnetic
Elevations in FEET AMSL

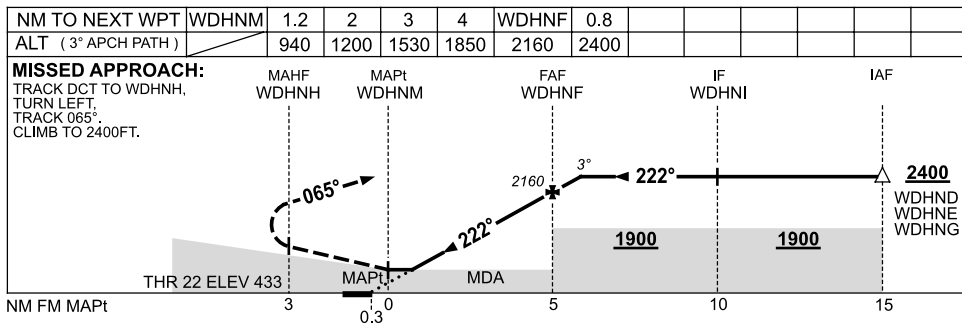
Holding at WDHNE

| TR | IN | TURN | TIME | MIN ALT | DME LMT |
|------|------|------|------|---------|---------|
| 222° | Left | 1 | | 2400 | |

* NO CIRCLING

2 NM

AD ELEV 452



NOTES

- MAX IAS: INITIAL : 210KT.
- NO CIRCLING NORTH OF RWY 04/22 BEYOND 2NM.

| CATEGORY | A | B | C | D |
|------------|----------------|---|----------------|----------------|
| S-I GNSS | 940 (507-2.9) | | | NOT APPLICABLE |
| CIRCLING * | 1060 (608-2.4) | | 1160 (708-4.0) | |
| ALTERNATE | (1108-4.4) | | (1208-6.0) | |

Changes: PROC NAME, Editorial.

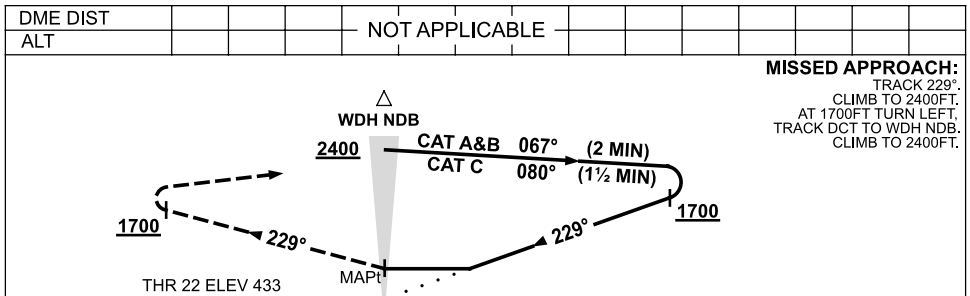
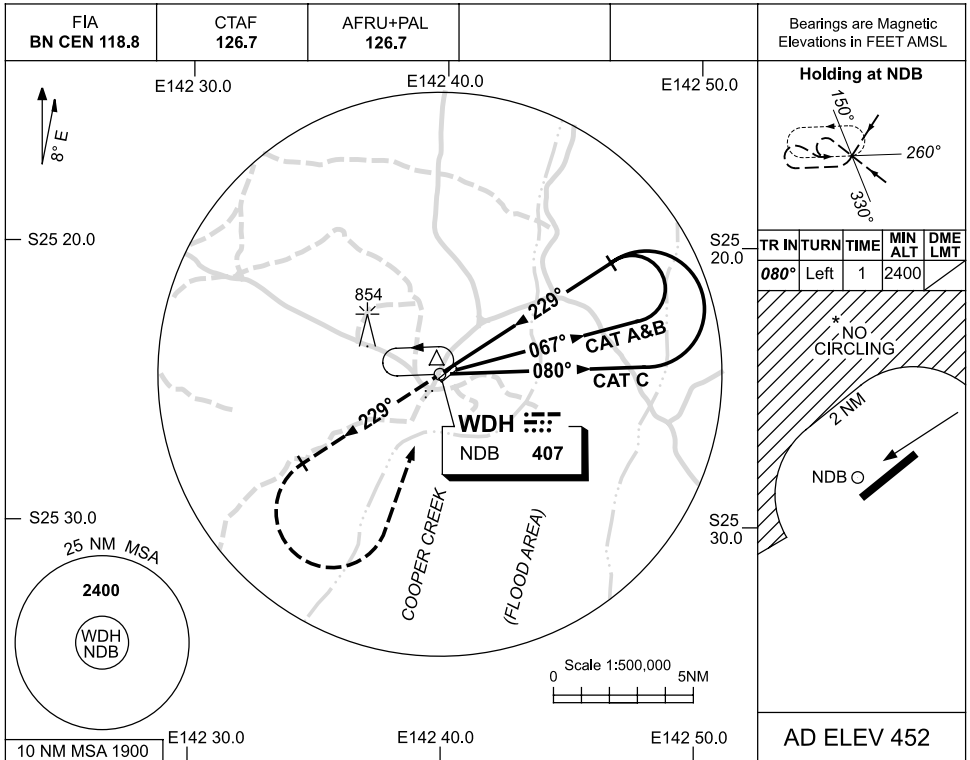
WDHGN02-117



USE QNH

NDB RWY 22
WINDORAH, QLD (YWDH)

20 NOV 2008



| CATEGORY | A | B | C | D |
|------------|-----------------------|---|-----------------------|-----------------------|
| S-I NDB | 990 (557-3.1) | | | NOT APPLICABLE |
| CIRCLING * | 1060 (608-2.4) | | 1160 (708-4.0) | |
| ALTERNATE | (1108-4.4) | | (1208-6.0) | |

NOTES

- MAX IAS: INITIAL : 210KT.
- * 2. NO CIRCLING NORTH OF RWY 04/22 BEYOND 2NM.

Changes: PROC NAME, Editorial.

WDHNB01-117