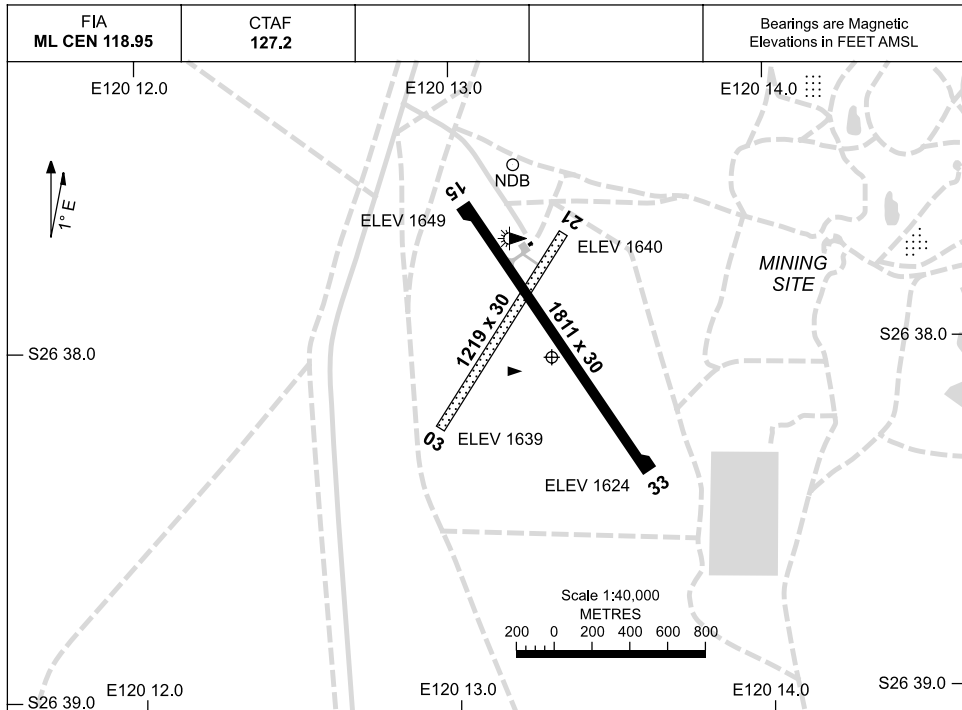


5 JUN 2008

AD ELEV 1649
S26 37.8 E120 13.2

AERODROME CHART
WILUNA, WA (YWLU)



	AERODROME LIGHTING	
RWY	RL : MAN (24HR PN)	
15 <small>145</small> <small>325</small> 33	LIRL	
03 <small>032</small> <small>212</small> 21	NIL	

NOTES

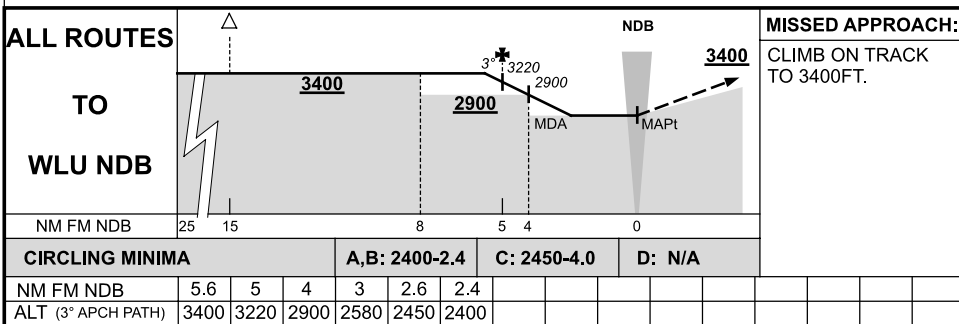
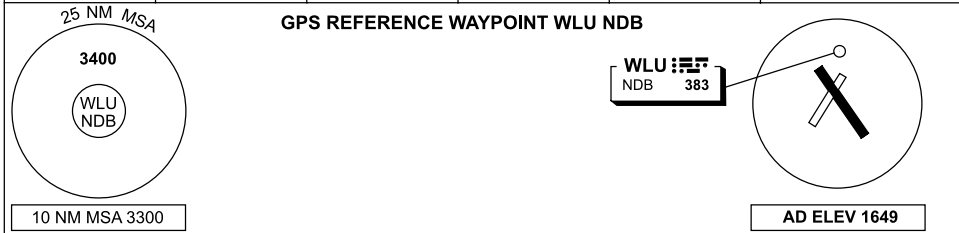
Changes: WDI, RWY BRG.

WLUA01-115

GPS ARRIVAL PROCEDURES WILUNA, WA (YWLU)

5 JUN 2008

FIA ML CEN 118.95	CTAF 127.2				Bearings are Magnetic Elevations in FEET AMSL
----------------------	---------------	--	--	--	--

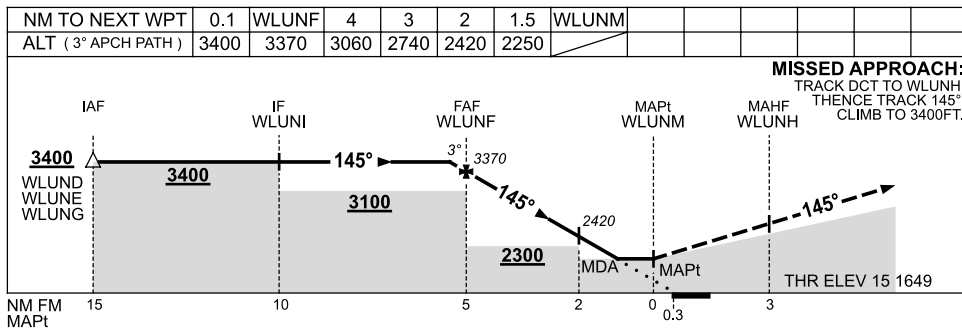
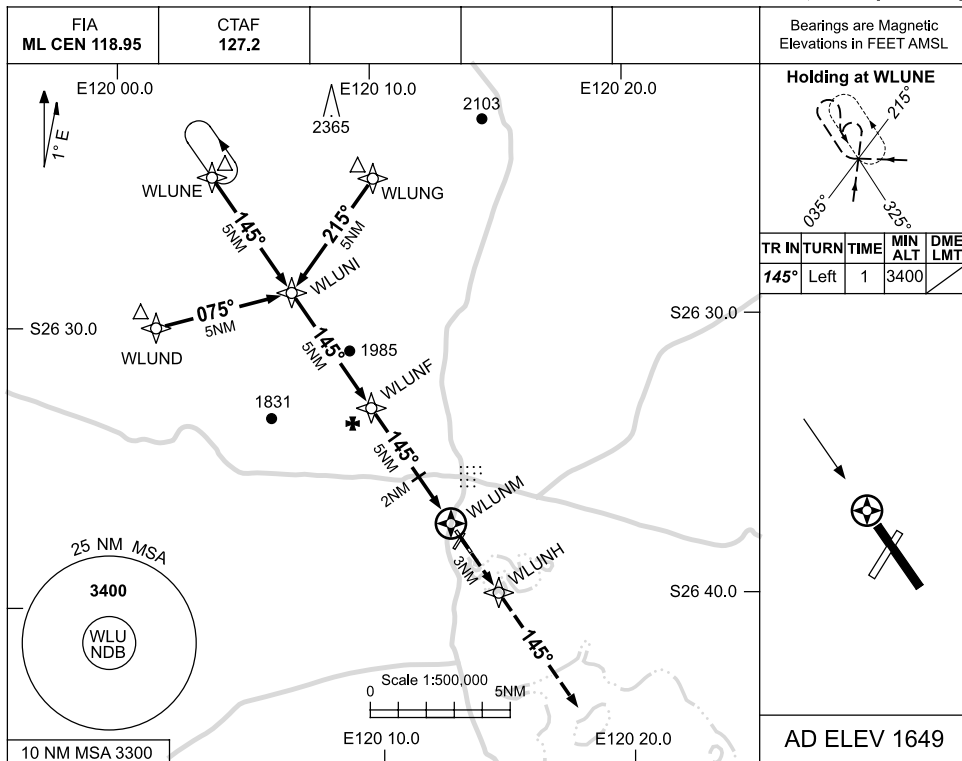


WLUDG01-115

USE QNH

RNAV (GNSS) RWY 15
WILUNA, WA (YWLU)

5 JUN 2008



NOTES

CATEGORY	A	B	C	D
S-I GNSS	2250 (601-3.3)			NOT APPLICABLE
CIRCLING	2290 (641-2.4)		2450 (801-4.0)	
ALTERNATE	(1141-4.4)		(1301-6.0)	

1. MAX IAS:
INITIAL : 210KT.

Changes: PROC NAME, TRACK, Editorial.

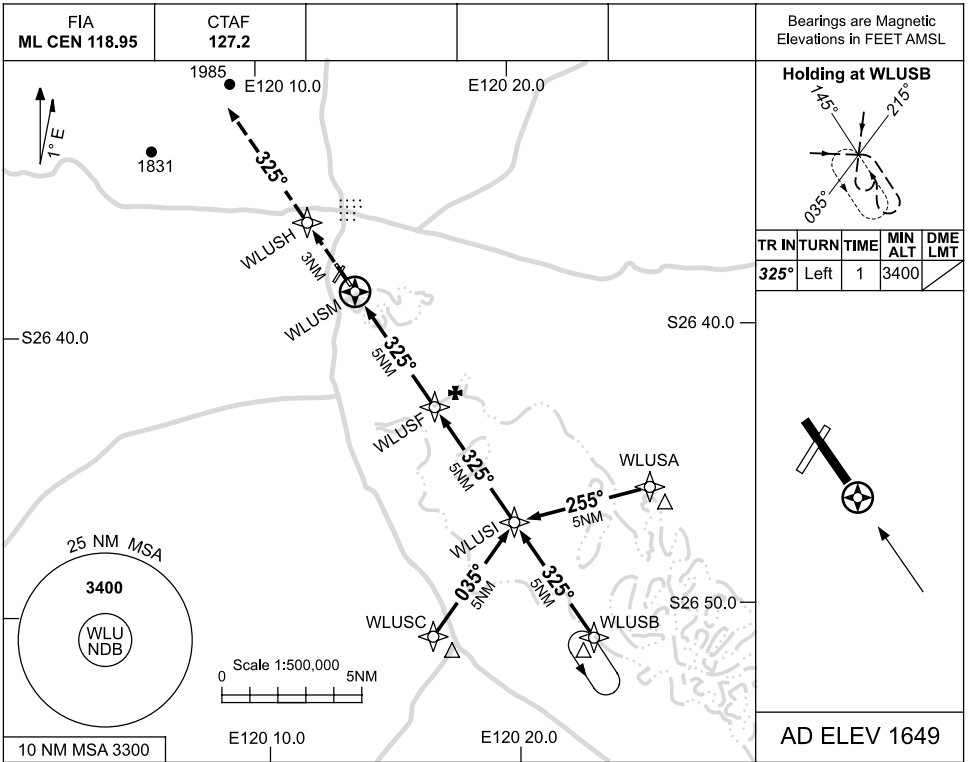
WLUGN01-115



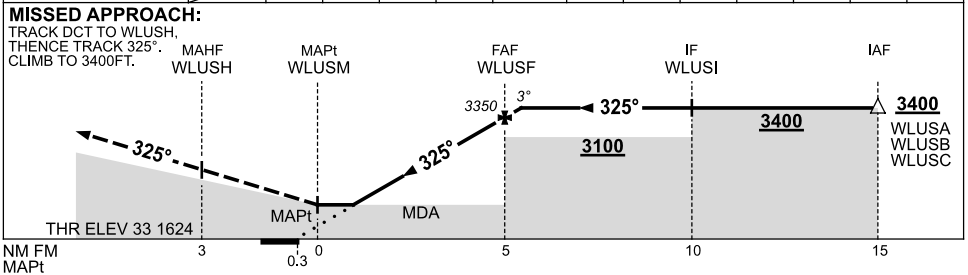
USE QNH

RNAV (GNSS) RWY 33
WILUNA, WA (YWLU)

5 JUN 2008



NM TO NEXT WPT	WLUSM	1.5	2	3	4	WLUSF	0.2					
ALT (3° APCH PATH)		2250	2390	2710	3030	3350	3400					



NOTES

1. MAX IAS:
 INITIAL : 210KT.

CATEGORY	A	B	C	D
S-I GNSS	2250 (626-3.5)			NOT APPLICABLE
CIRCLING	2290 (641-2.4)		2450 (801-4.0)	
ALTERNATE	(1141-4.4)		(1301-6.0)	

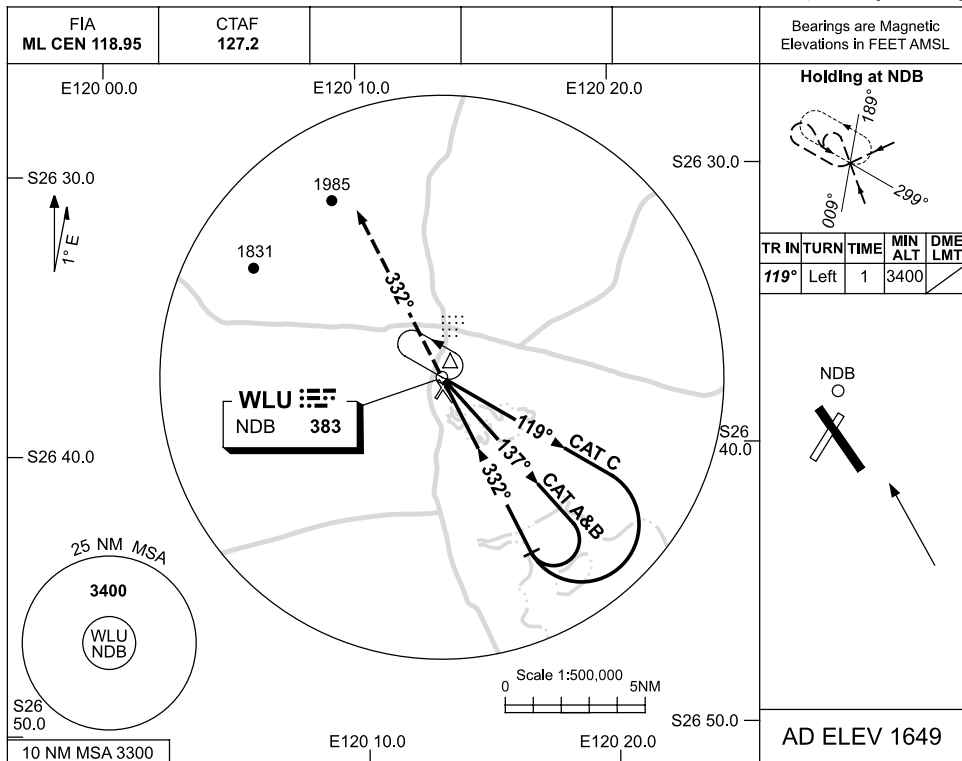
Changes: PROC NAME, TRACK, Editorial.

WLUGN02-115

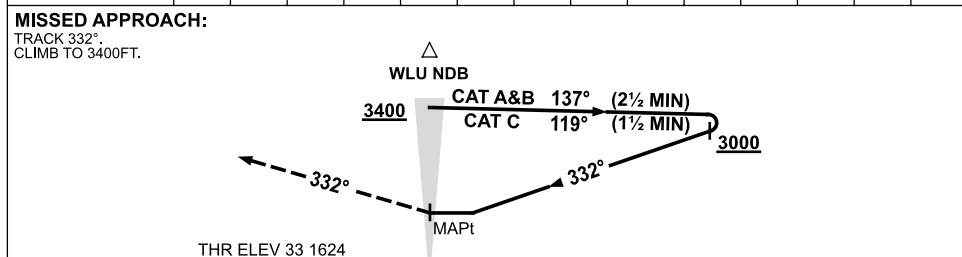
USE QNH

NDB RWY 33
WILUNA, WA (YWLU)

5 JUN 2008



DME DIST	NOT APPLICABLE								
ALT									



NM FROM NDB

NOTES

CATEGORY	A	B	C	D
S-I NDB	2250 (626-3.5)			NOT APPLICABLE
CIRCLING	2290 (641-2.4)	2450 (801-4.0)		
ALTERNATE	(1141-4.4)		(1301-6.0)	

1. MAX IAS:
INITIAL :
CAT A&B 140KT.
CAT C 210KT.

Changes: PROC NAME.

WLUNB01-115