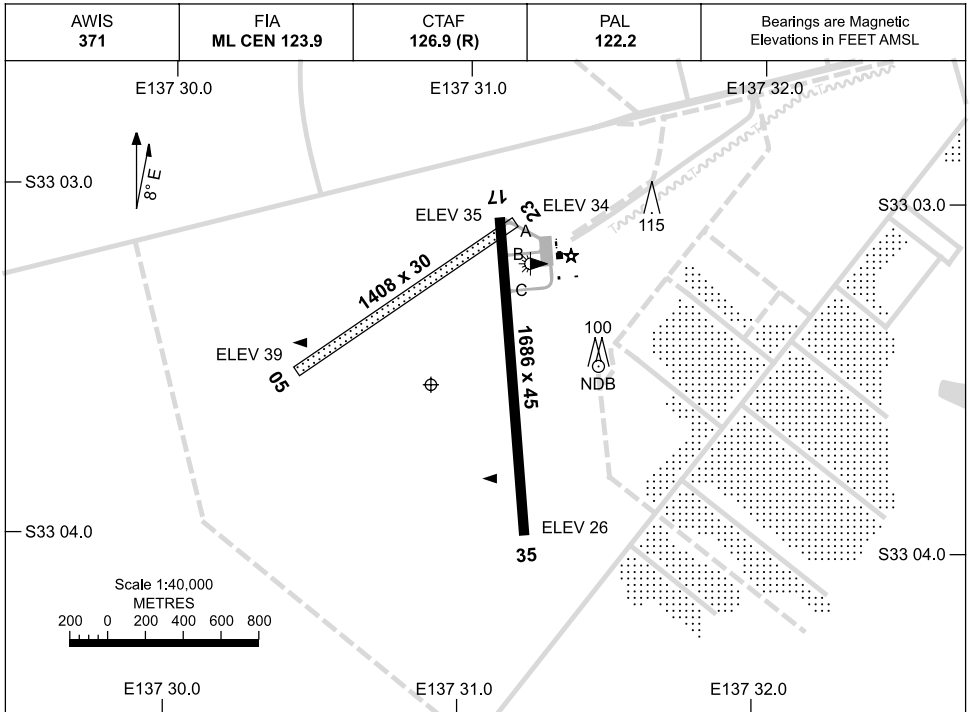


12 MAR 2009

AD ELEV 41
S33 03.5 E137 30.9

AERODROME CHART
WHYALLA, SA (YWHA)



	AERODROME LIGHTING
RWY	ABN : ALT WG TAXIWAY : CENTRELINE GREEN RL : PILOT ACTIVATED 122.2 ; SDBY ; PTBL
17 <small>167</small> 35 <small>347</small>	LIRL
05 <small>047</small> 23 <small>227</small>	PTBL BY ARRANGEMENT

NOTES

FOR ON GROUND COMS CONTACT FLIGHTWATCH 134.9

Changes: AWIS, CTAF (R), Editorial.

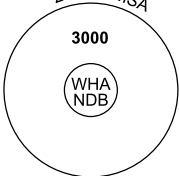
WHAAD01-118

GPS ARRIVAL PROCEDURES WHYALLA, SA (YWHA)

12 MAR 2009

AWIS 371	FIA ML CEN 123.9	CTAF 126.9 (R)	PAL 122.2		Bearings are Magnetic Elevations in FEET AMSL
-------------	---------------------	-------------------	--------------	--	--

25 NM MSA



10 NM MSA 1900

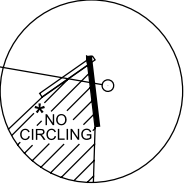
GPS REFERENCE WAYPOINT WHA NDB

WHA

NDB


371

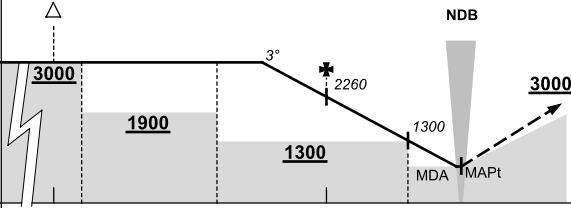
* NO CIRCLING IN SECTOR WEST OF RWY 17/35 AND STH OF RWY 05/23.



AD ELEV 41

SECTOR A



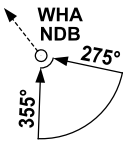


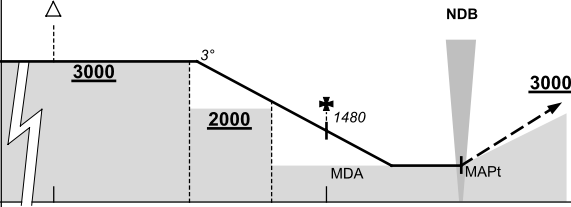
MISSED APPROACH:

CLIMB ON TRACK TO 3000FT.

NM FM NDB	25	15	14	9	5	2	0								
CIRCLING MINIMA	A,B: 710-2.4			C: 1220-4.0			D: N/A								
NM FM NDB	7.3	7	6	5	4	3	2	1.7	0.1						
ALT (3° APCH PATH)	3000	2890	2580	2260	1940	1620	1300	1220	710						

SECTOR B





MISSED APPROACH:

CLIMB ON TRACK TO 3000FT.

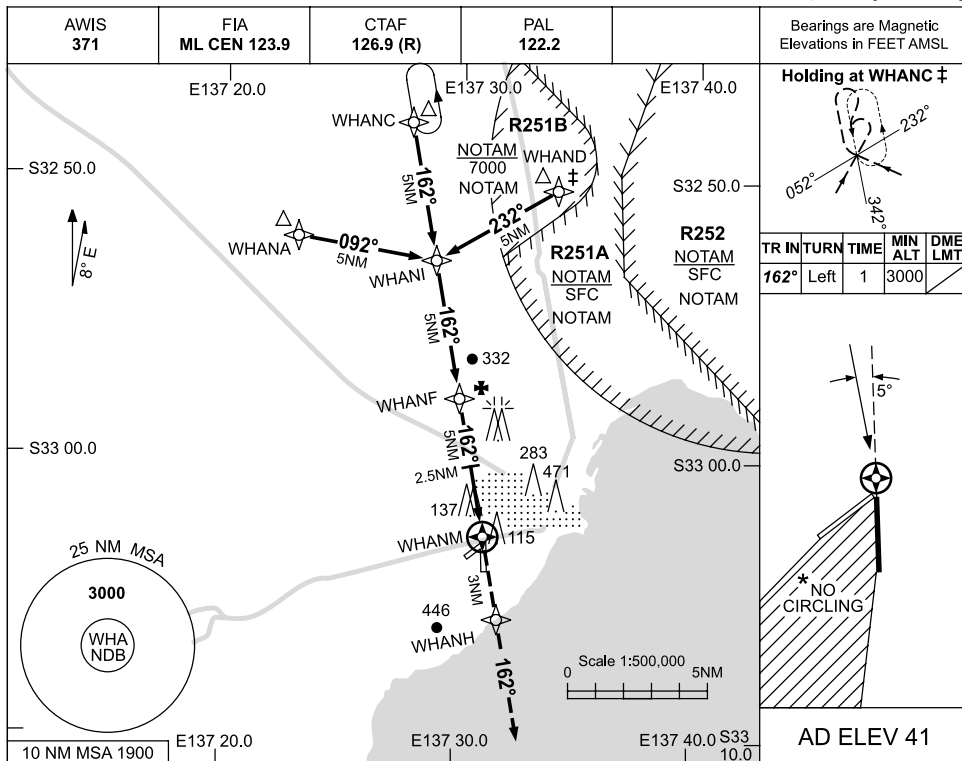
NM FM NDB	25	15	10	7	5	0									
CIRCLING MINIMA	A,B: 710-2.4			C: 1220-4.0			D: N/A								
NM FM NDB	9.8	9	8	7	6	5	4.2	3	2.6						
ALT (3° APCH PATH)	3000	2750	2430	2110	1800	1480	1220	840	710						

WHADG01-118

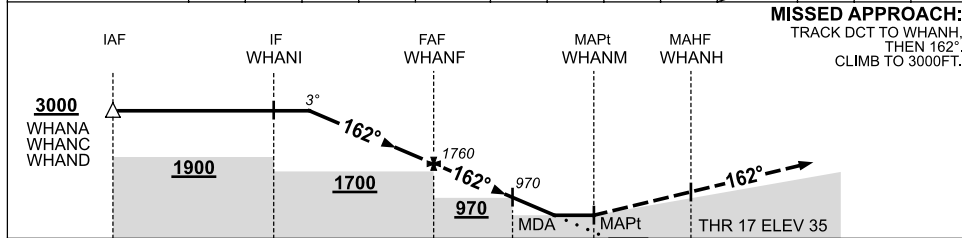
USE QNH

RNAV_(GNSS)RWY 17
WHYALLA, SA (YWHA)

19 NOV 2009



NM TO NEXT WPT	3.9	3	2	1	WHANF	4	3	2	1.3	WHANM		
ALT (3° APCH PATH)	3000	2720	2400	2080	1760	1450	1130	810	600			



CATEGORY	A	B	C	D
S-I GNSS	600 (559-3.4)			
CIRCLING *	710 (669-2.4)		1220 (1179-4.0)	
ALTERNATE	(1169-4.4)		(1679-6.0)	

- NOTES**
- MAX IAS:
HOLDING: 210KT.
INITIAL : 210KT.
 - NO CIRCLING IN SECTOR WEST OF RWY 17/35 AND STH OF RWY 05/23.
 - HOLDING AND LEFT OFFSET (WHAND) INITIAL NOT AVBL WHEN R251 ACT BLW 3000FT.

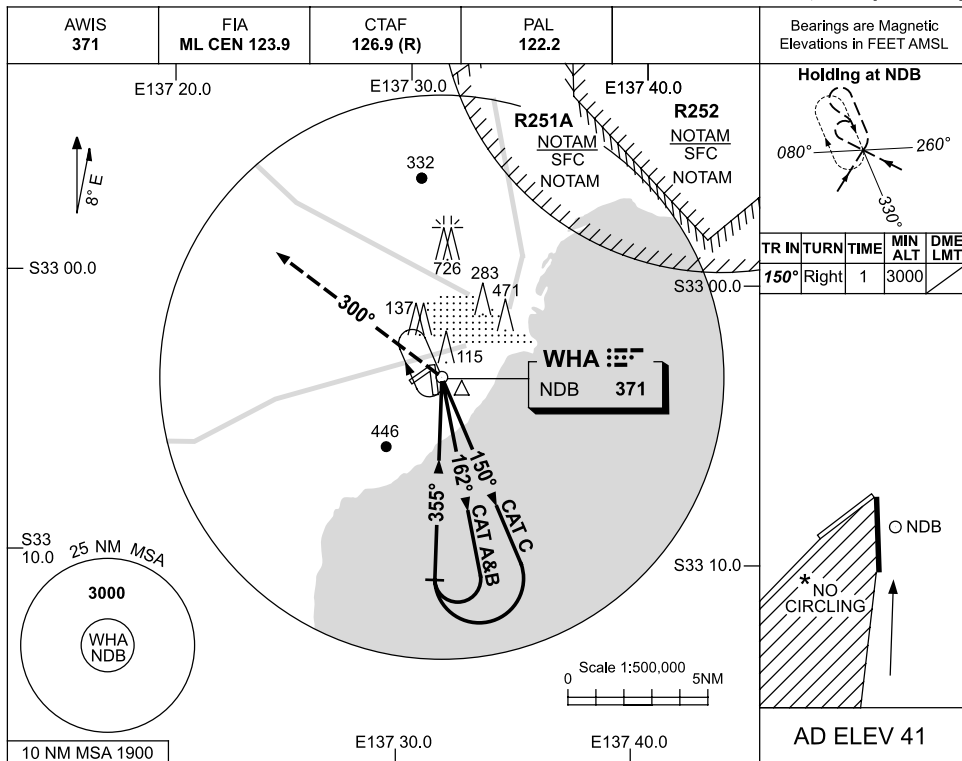
Changes: R251A, R251B, R252.

WHAGN01-121

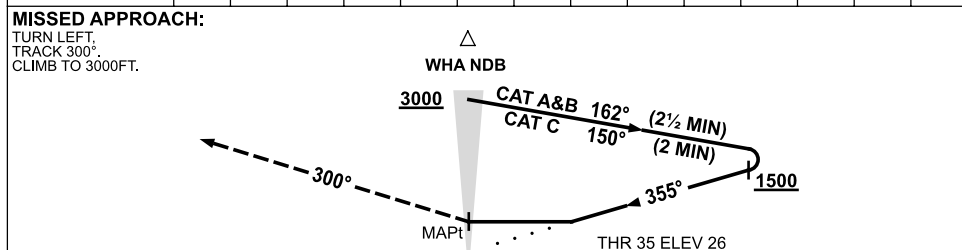
USE QNH

NDB RWY 35
WHYALLA, SA (YWHA)

19 NOV 2009



DME DIST	NOT APPLICABLE									
ALT										



NOTES

CATEGORY	A	B	C	D
S-I NDB	600 (574-3.2)			NOT APPLICABLE
CIRCLING *	710 (669-2.4)	1220 (1179-4.0)		
ALTERNATE	(1169-4.4)		(1679-6.0)	

1. MAX IAS:
INITIAL : 220KT.
- * 2. NO CIRCLING IN
SECTOR WEST OF
RWY 17/35 AND
STH OF RWY 05/23.
3. HOLDING NOT AVBL
WHEN R251 ACT.

Changes: R251A, R252.

WHANB01-121