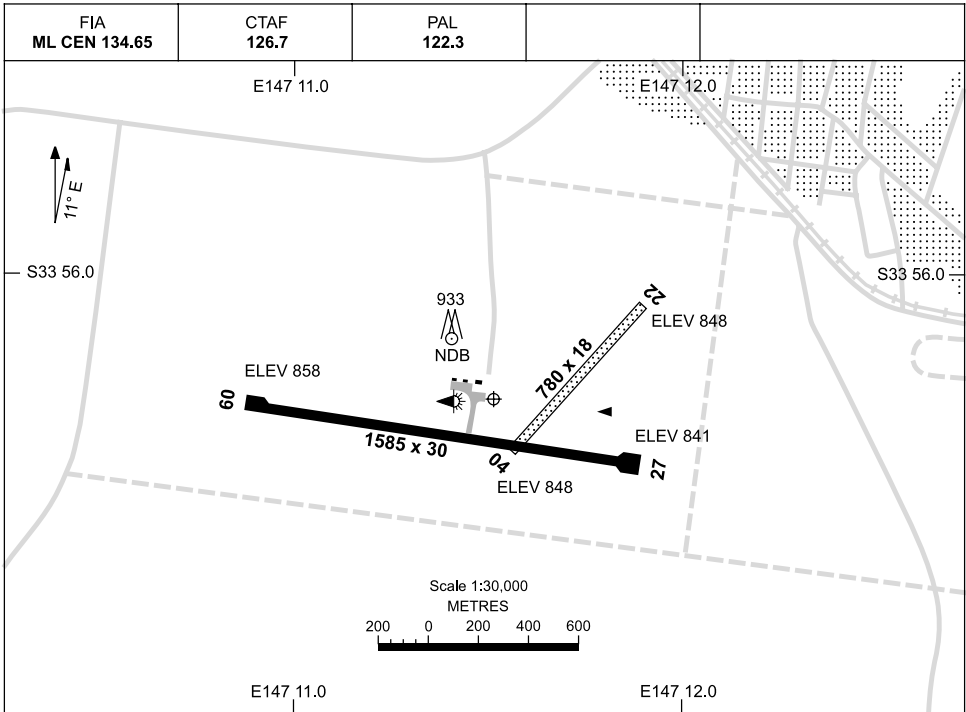


4 JUN 2009

AD ELEV 859
S33 56.2 E147 11.5

AERODROME CHART
WEST WYALONG, NSW (YWWL)



AERODROME LIGHTING

| RWY | Lighting Description |
|---|--|
| | TAXIWAY : SIDELINE BLUE RL : PILOT ACTIVATED 122.3 ; PTBL PN OR EMERG |
| 09 ⁰⁸⁷ 267 27 | LIRL LIRL |
| 04 ⁰³⁰ 210 22 | NIL NIL |

NOTES

1. AWIS (PHONE) 02 6972 3564

Changes: NOTE 1, Editorial.

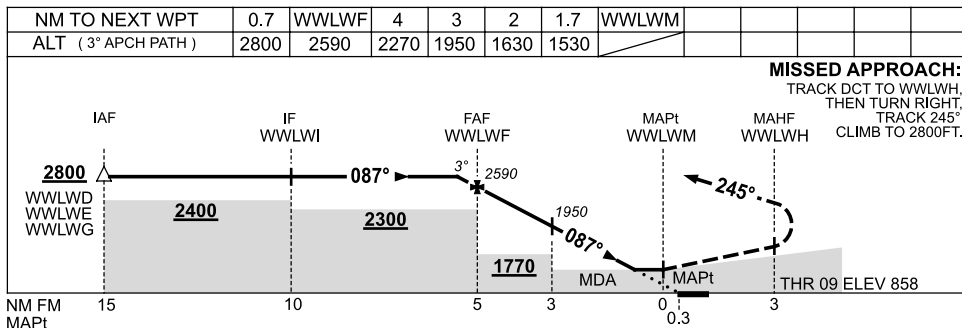
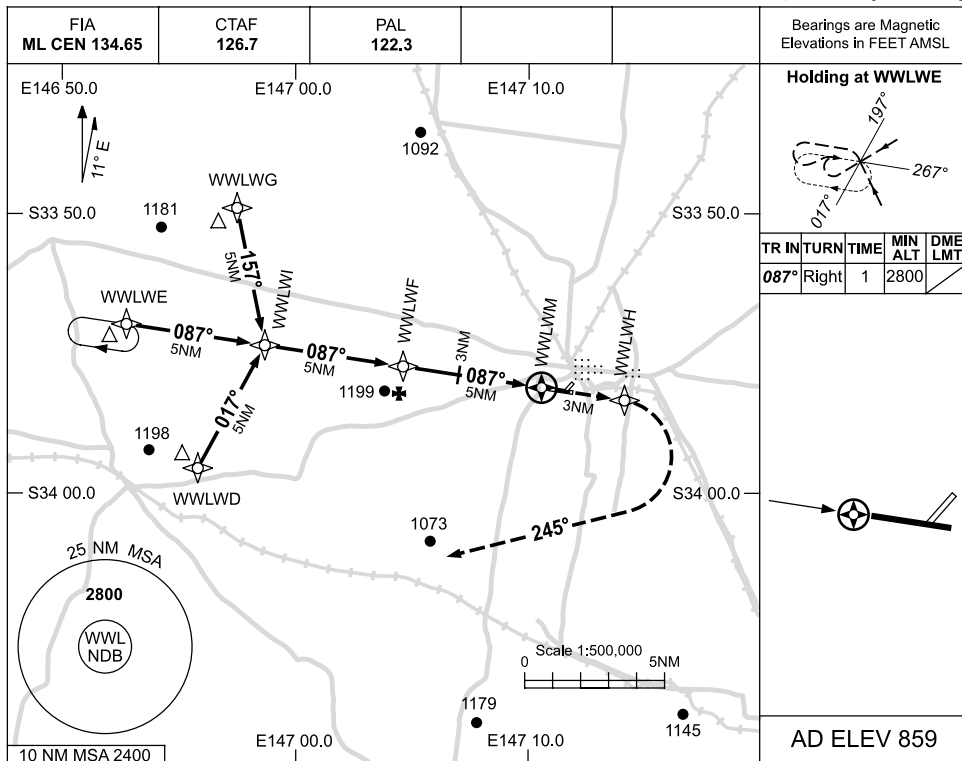
WWLAD01-119

USE QNH

RNAV (GNSS) RWY 09

WEST WYALONG, NSW (YWWL)

4 JUN 2009



NOTES

| CATEGORY | A | B | C | D |
|-----------|-----------------------|---|-----------------------|-----------------------|
| S-I GNSS | 1530 (671-3.8) | | | NOT APPLICABLE |
| CIRCLING | 1580 (721-2.4) | | 1680 (821-4.0) | |
| ALTERNATE | (1221-4.4) | | (1321-6.0) | |

1. MAX IAS:
INITIAL : 210KT.
2. AWIS (PHONE)
02 6972 3564

Changes: NOTE 2, Editorial.

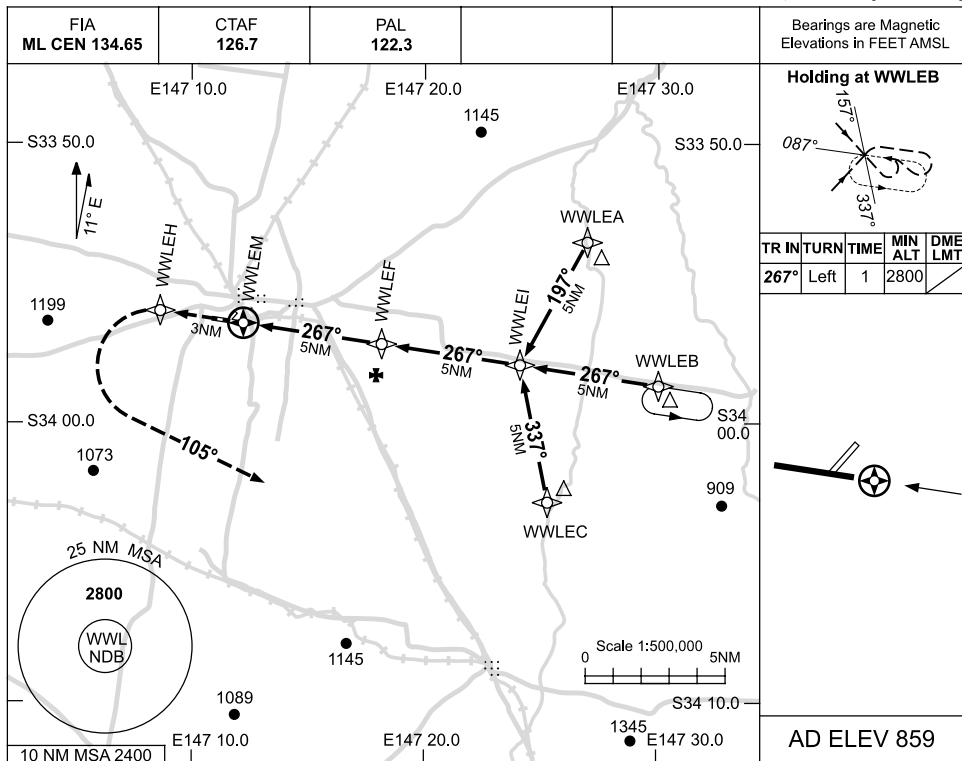
WWLGN01-119



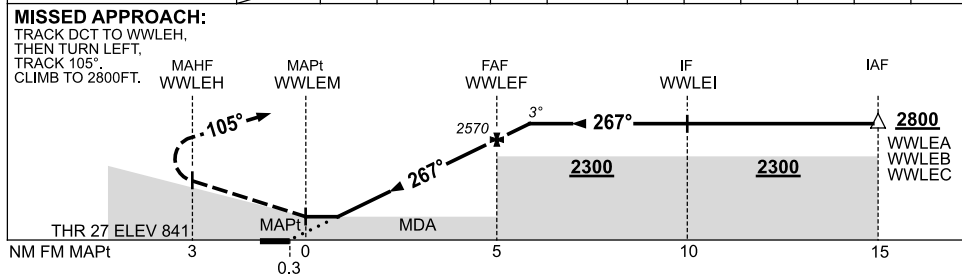
USE QNH

RNAV (GNSS) RWY 27
WEST WYALONG, NSW (YWWL)

4 JUN 2009



| | | | | | | | | | | |
|--------------------|-------|------|------|------|------|-------|------|--|--|--|
| NM TO NEXT WPT | WWLEM | 1.3 | 2 | 3 | 4 | WWLEF | 0.7 | | | |
| ALT (3° APCH PATH) | | 1400 | 1610 | 1930 | 2250 | 2570 | 2800 | | | |



NOTES

| CATEGORY | A | B | C | D |
|-----------|-----------------------|---|-----------------------|-----------------------|
| S-I GNSS | 1400 (559-3.1) | | | NOT APPLICABLE |
| CIRCLING | 1580 (721-2.4) | | 1680 (821-4.0) | |
| ALTERNATE | (1221-4.4) | | (1321-6.0) | |

1. MAX IAS: INITIAL : 210KT.
2. AWIS (PHONE) 02 6972 3564

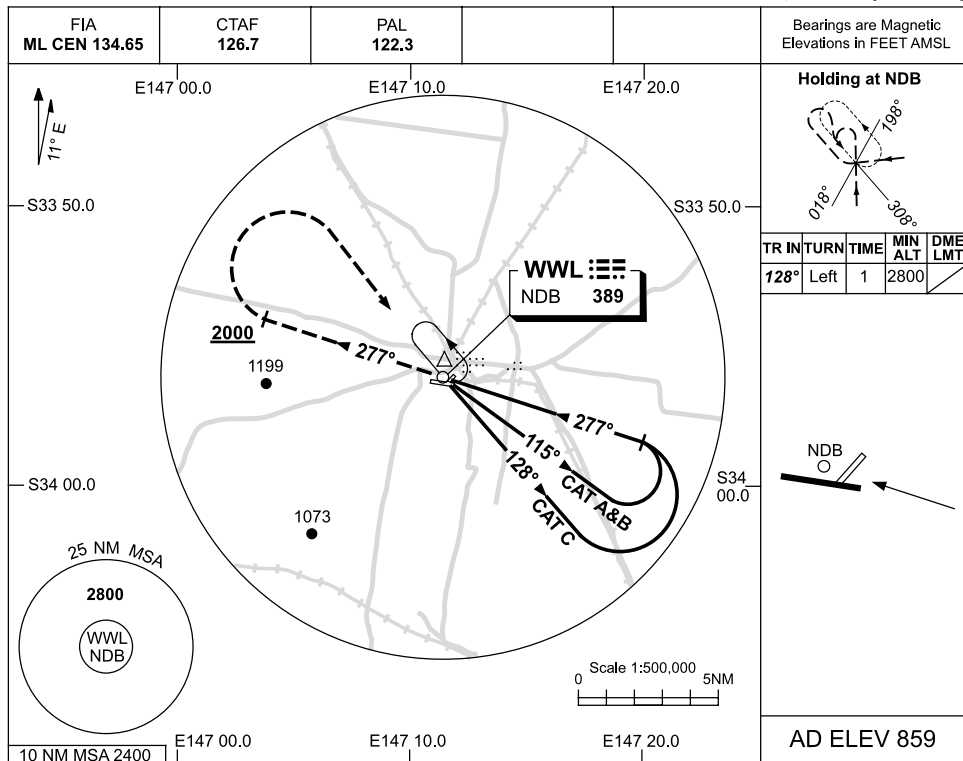
Changes: NOTE 2, Editorial.

WWLGN02-119

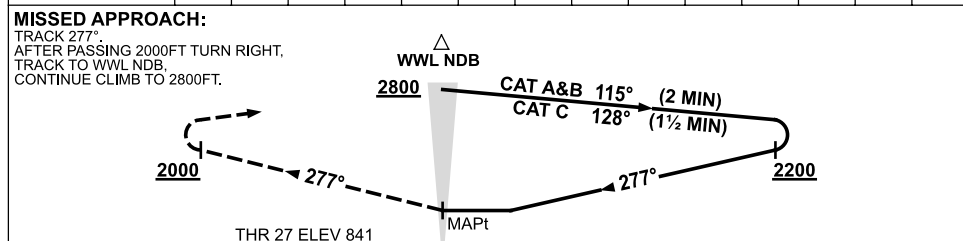
USE QNH

NDB RWY 27
WEST WYALONG, NSW (WWWL)

4 JUN 2009



| | | | | | |
|----------|----------------|--|--|--|--|
| DME DIST | NOT APPLICABLE | | | | |
| ALT | | | | | |



NOTES

| CATEGORY | A | B | C | D |
|-----------|-----------------------|-----------------------|------------|----------------|
| S-I NDB | 1450 (609-3.4) | | | NOT APPLICABLE |
| CIRCLING | 1580 (721-2.4) | 1680 (821-4.0) | | |
| ALTERNATE | (1221-4.4) | | (1321-6.0) | |

1. MAX IAS:
INITIAL : 210KT.
2. AWIS (PHONE)
02 6972 3564

Changes: NOTE 2.

WWLNB01-119