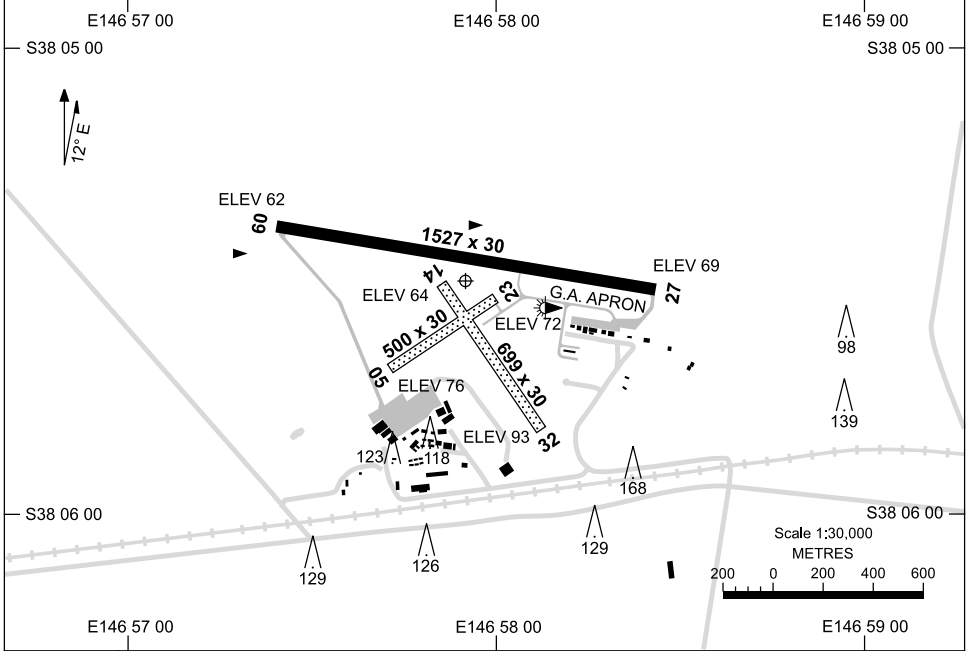


17 NOV 2011

AD ELEV 93  
S38 05 30 E146 57 55

**AERODROME CHART**  
**WEST SALE, VIC (YWSL)**

ATIS (ESL) * <b>125.4 350</b>	APP (ESL) * <b>123.3</b>	ACD (ESL) * <b>133.6</b>	FIA <b>ML CEN 124.0</b>	CTAF+AFRU * <b>118.3</b>	PAL <b>119.6</b>	Bearings are Magnetic Elevations in FEET AMSL
----------------------------------	-----------------------------	-----------------------------	----------------------------	-----------------------------	---------------------	--



<b>AERODROME LIGHTING</b>	
<b>RWY</b>	TAXIWAY : SIDELINE BLUE RL : PILOT ACTIVATED 119.6 , PTBL
<b>09</b> <sup>087</sup> <b>27</b> <sup>267</sup>	LIRL
<b>05</b> <sup>044</sup> <b>23</b> <sup>224</sup>	NIL
<b>14</b> <sup>133</sup> <b>32</b> <sup>313</sup>	NIL

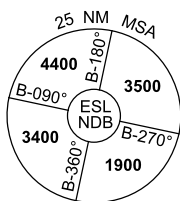
**NOTES**

- \* 1. REFER TO ERSA FOR AVAILABILITY.
- 2. RIGHT HAND CCTS RWY 05, 09 AND 14.
- 3. WESTERN TWY AVBL TO ACFT BELOW 5700KG.

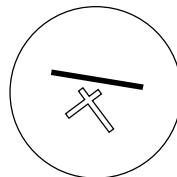
## DME or GPS ARRIVAL PROCEDURES WEST SALE, VIC (YWSL)

17 NOV 2011

ATIS (ESL)* 125.4 350	APP (ESL)* 123.3	ACD (ESL)* 133.6	FIA ML CEN 124.0	CTAF+AFRU* 118.3	PAL 119.6	Bearings are Magnetic Elevations in FEET AMSL
--------------------------	---------------------	---------------------	---------------------	---------------------	--------------	--

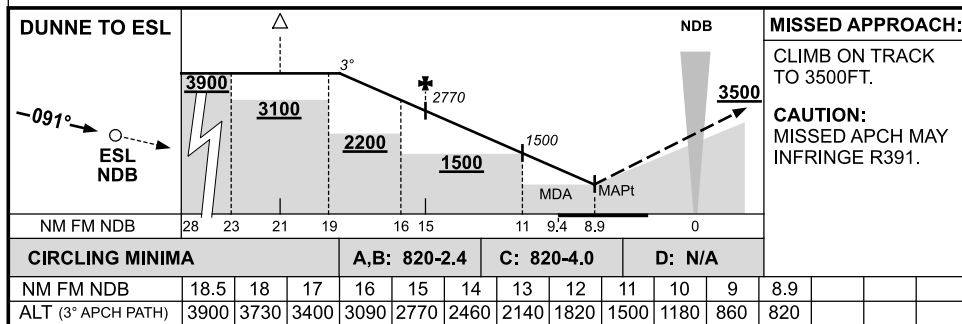


**DME USING ESL DME 113.5 (82X)  
GPS REFERENCE WAYPOINT ESL NDB (350)**



\* REFER TO ERSA FOR AVAILABILITY

AD ELEV 93



WSLDG01-129

**STANDARD INSTRUMENT DEPARTURES (SID)  
WEST SALE ONE DEPARTURE - RWYS 09 & 27  
WEST SALE, VIC (YWSL)**

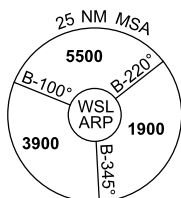
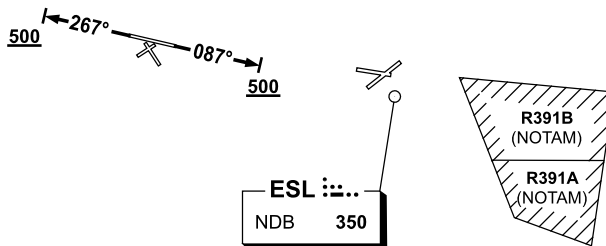
17 NOV 2011

ATIS (ESL)* 125.4 350	APP (ESL)* 123.3	ACD (ESL)* 133.6	FIA ML CEN 124.0	CTAF+AFRU* 118.3	PAL 119.6	Bearings are Magnetic Elevations in FEET AMSL
--------------------------	---------------------	---------------------	---------------------	---------------------	--------------	--

**\* REFER TO ERSA FOR AVAILABILITY**



NOT TO SCALE



GRAD=3.3%

**WEST SALE ONE DEPARTURE**

**RWY 09**

- GRAD=3.3%.
- Track 087°
- At 500FT turn to assigned heading
- Contact EAST SALE APPROACH on 123.3 for radar vectors

**RWY 27**

- GRAD=3.3%.
- Track 267°
- At 500FT turn to assigned heading
- Contact EAST SALE APPROACH on 123.3 for radar vectors

**COMMUNICATION FAILURE PROCEDURE**

On recognition of communication failure

- Squawk 7600
- Maintain last assigned vector for two minutes and, if necessary, climb to minimum safe altitude to maintain terrain clearance, then
- Proceed in accordance with the latest ATC route clearance acknowledge

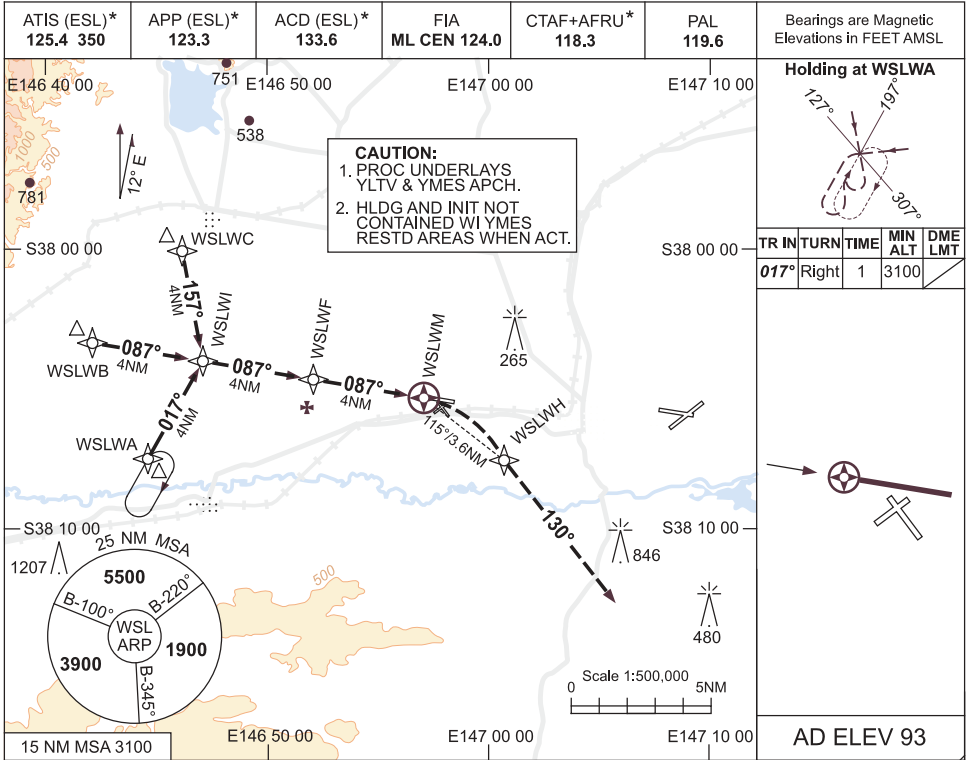
Changes: ATIS, AFRU, LOGO, Editorial.

WSLDP01-129

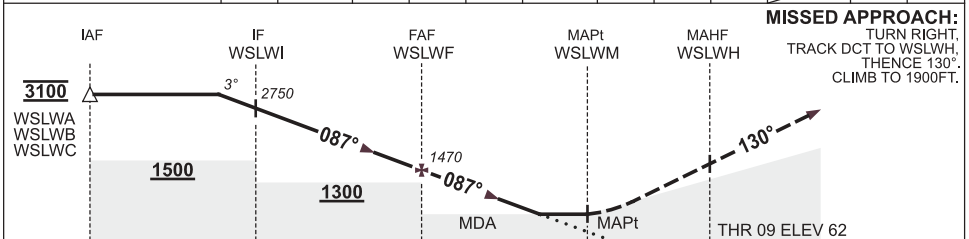
USE QNH

RNAV (GNSS) RWY 09  
**WEST SALE, VIC (YWSL)**

17 NOV 2011



NM TO NEXT WPT	1.1	WLSWI	3	2	1	WLSWF	3	2	1.4	WSLWM		
ALT (3° APCH PATH)	3100	2750	2430	2110	1790	1470	1150	830	630			



CATEGORY	A	B	C	D
S-I GNSS‡	630 (568-3.2)			NOT APPLICABLE
CIRCLING‡	820 (727-2.4)		820 (727-4.0)	
ALTERNATE	(1227-4.4)		(1227-6.0)	

**NOTES**

1. MAX IAS:  
HOLDING: 210KT,  
INITIAL : 200KT.
2. AWY CLR RQ DRG  
YMES ATS HR.
- \* 3. REFER TO ERSA  
FOR AVAILABILITY.
- ‡ 4. MDA MAY BE REDUCED  
BY 100FT USING YMES  
QNH.
5. COLOUR : SEE  
SPEC NOTICES.

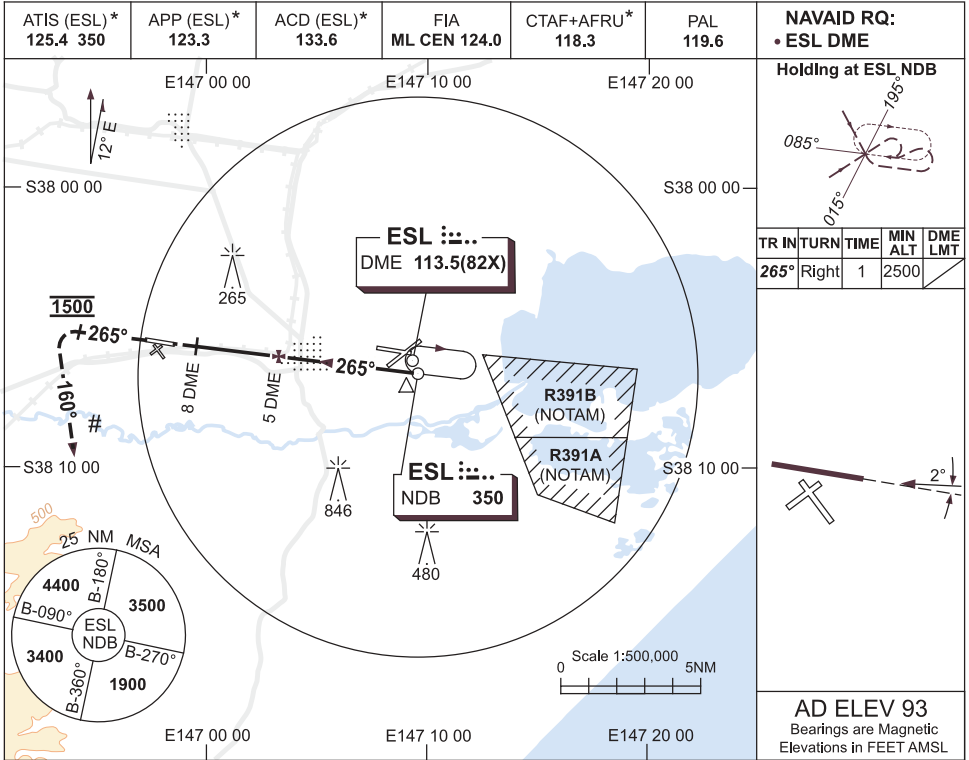
Changes: ATIS, AFRU, LOGO, Editorial.

WSLGN01-129

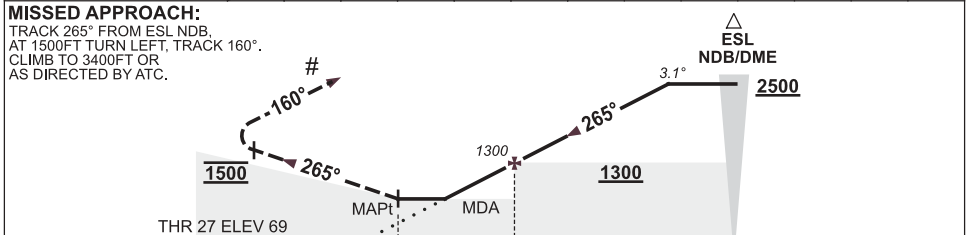
USE QNH

NDB-Y RWY 27  
WEST SALE, VIC (YWSL)

17 NOV 2011



DIST BY DME	MAPt	7	6	5	4	3	2	1.4				
ALT (3.1° APCH PATH)		640	970	1300	1630	1960	2290	2500				



DME DIST	8.6	5	0
THR 27 ELEV 69			
MAPt			
MDA			
ESL NDB/DME			<b>2500</b>

**NOTES**

1. MAX IAS:  
HOLDING: 210KT.
- \* 2. REFER TO ERSA  
FOR AVAILABILITY.
- ‡ 3. MDA MAY BE REDUCED  
BY 100FT USING YMES  
QNH.
- # 4. YYRM RNAV (GNSS)  
RWY 27 PROC IS  
20NM TO THE SOUTH.
5. COLOUR : SEE  
SPEC NOTICES.

CATEGORY	A	B	C	D
S-I NDB/DME‡	<b>640 (571-3.2)</b>			NOT APPLICABLE
CIRCLING‡	<b>820 (727-2.4)</b>		<b>820 (727-4.0)</b>	
ALTERNATE	<b>(1227-4.4)</b>		<b>(1227-6.0)</b>	

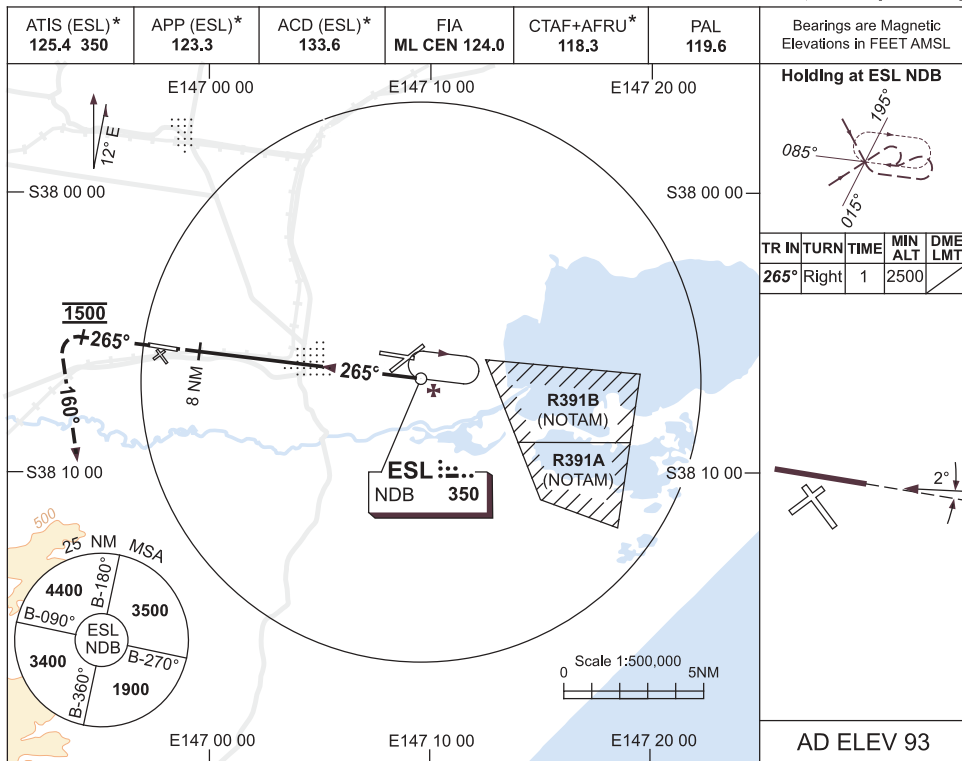
Changes: ATIS, AFRU, LOGO, Editorial.

WLSLNB01-129

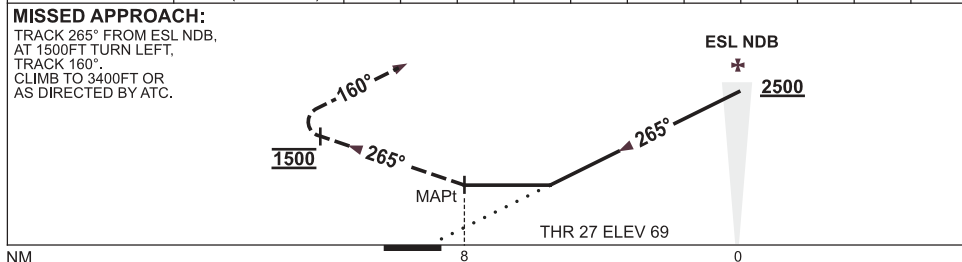
USE QNH

NDB-Z RWY 27  
WEST SALE, VIC (YWSL)

17 NOV 2011



NDB to MAPt	GS (KNOTS)	40	60	80	100	120	140	160				
	TIME (MIN:SEC)	12:00	8:00	6:00	4:48	4:00	3:26	3:00				



**NOTES**

CATEGORY	A	B	C	D	*1. REFER TO ERSA FOR AVAILABILITY. ‡ 2. MDA MAY BE REDUCED BY 100FT USING YMES QNH. 3. COLOUR : SEE SPEC NOTICES.
S-I NDB ‡	<b>820 (751-4.3)</b>		NOT APPLICABLE		
CIRCLING ‡	<b>820 (727-2.4)</b>				
ALTERNATE	<b>(1227-4.4)</b>				

Changes: ATIS, AFRU, LOGO, Editorial.

WLSNB02-129