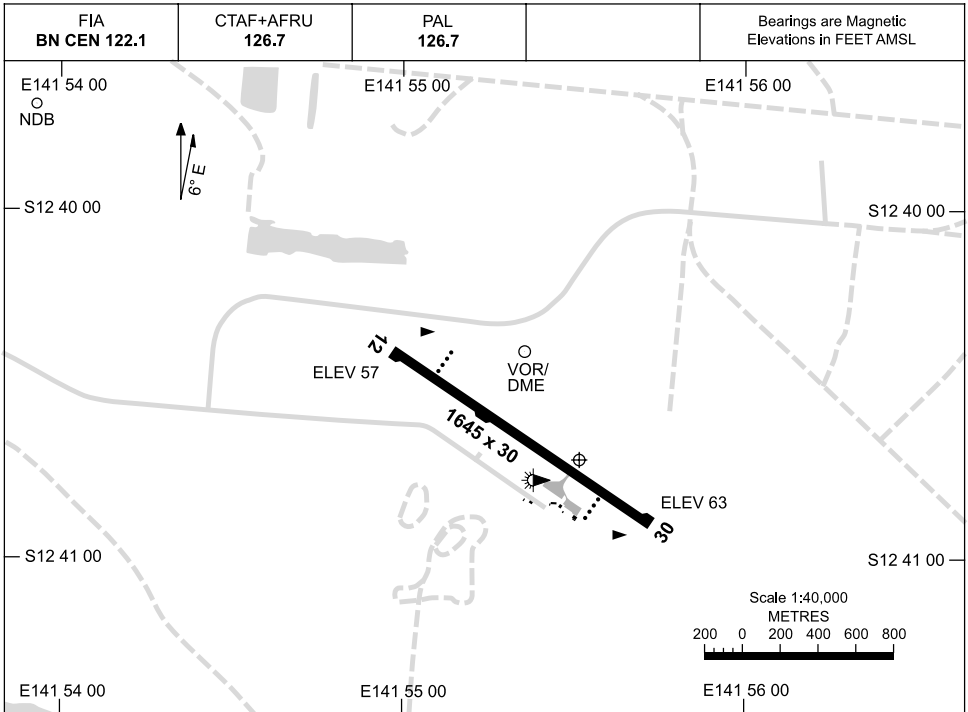


25 AUG 2011

AD ELEV 63  
S12 40 43 E141 55 31

AERODROME CHART  
**WEIPA, QLD (YBWP)**



	<b>AERODROME LIGHTING</b>
<b>RWY</b>	TAXIWAY : SIDELINE BLUE RL : PILOT ACTIVATED 119.6 , SDBY , PTBL
<b>12</b> <sup>118</sup>	PAPI LEFT SIDE 3.0° 45FT LIRL
<sup>298</sup> <b>30</b>	PAPI LEFT SIDE 3.0° 46FT LIRL

**NOTES**

1. AWIS (PHONE) 07 4069 9692

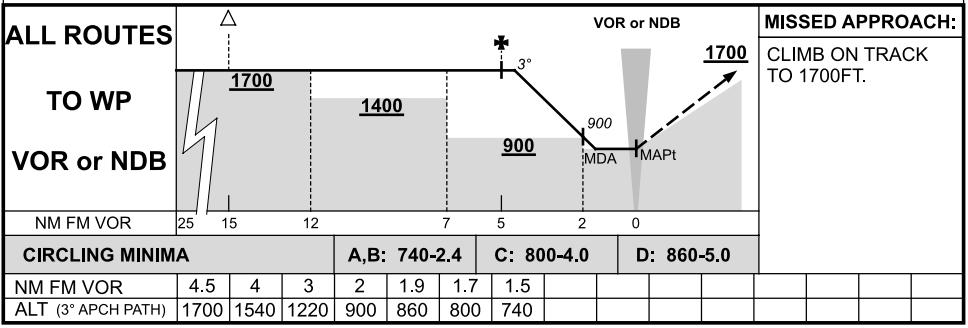
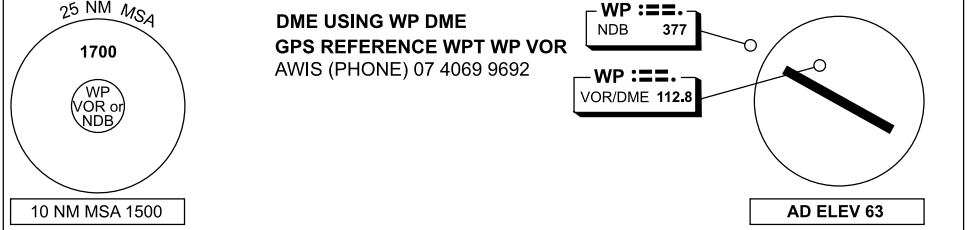
Changes: PAL.

BWPAD01-128

# DME or GPS ARRIVAL PROCEDURES WEIPA, QLD (YBWP)

25 AUG 2011

FIA BN CEN 122.1	CTAF+AFRU 126.7	PAL 126.7			Bearings are Magnetic Elevations in FEET AMSL
---------------------	--------------------	--------------	--	--	--



BWPDG01-128

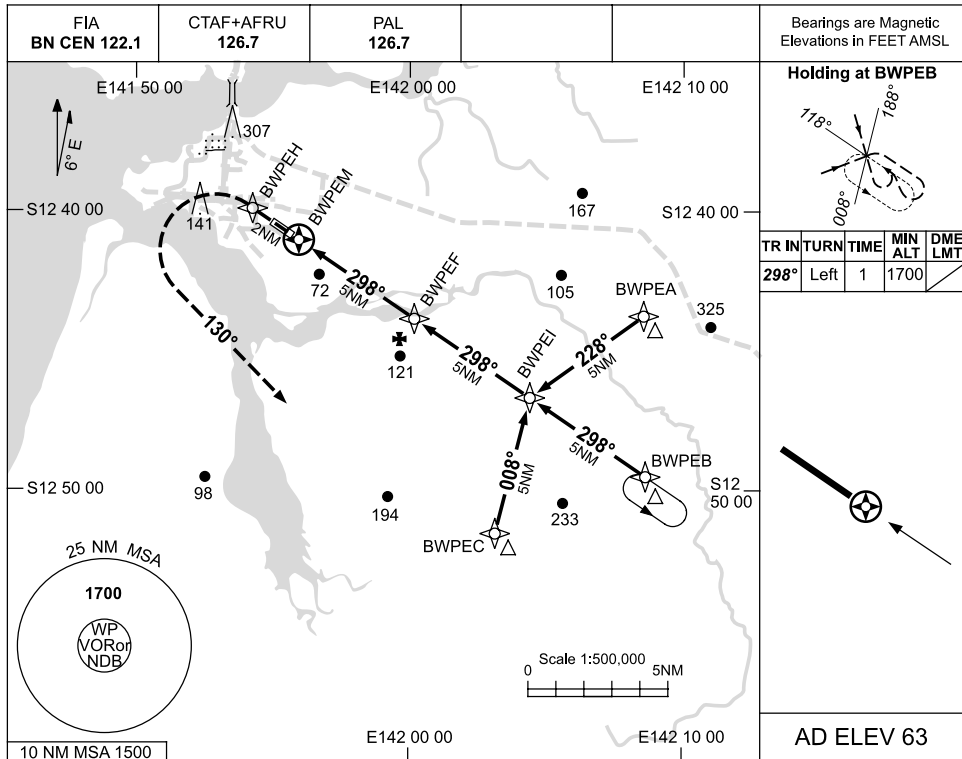




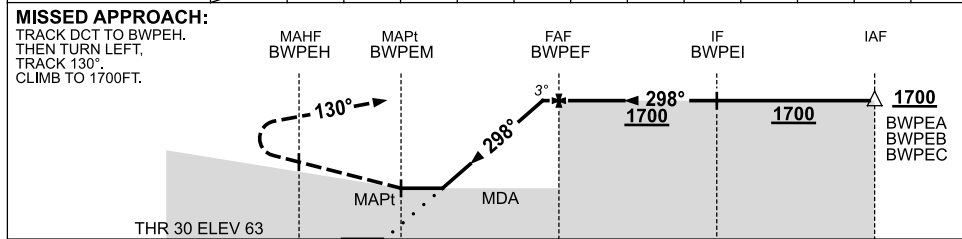
USE QNH

RNAV<sup>(GNSS)</sup> RWY 30  
WEIPA, QLD (YBWP)

25 AUG 2011



NM TO NEXT WPT	BWPEM	1.3	2	3	4	4.7				
ALT (3° APCH PATH)		610	840	1160	1480	1700				



**NOTES**

1. MAX IAS: INITIAL :210KT.
2. AWIS (PHONE) 07 4069 9692

CATEGORY	A	B	C	D
S-I GNSS	<b>610 (547-3.1)</b>			
CIRCLING	<b>740 (677-2.4)</b>	<b>800 (737-4.0)</b>	<b>860 (797-5.0)</b>	
ALTERNATE	(1177-4.4)	(1237-6.0)	(1297-7.0)	

Changes: PAL.

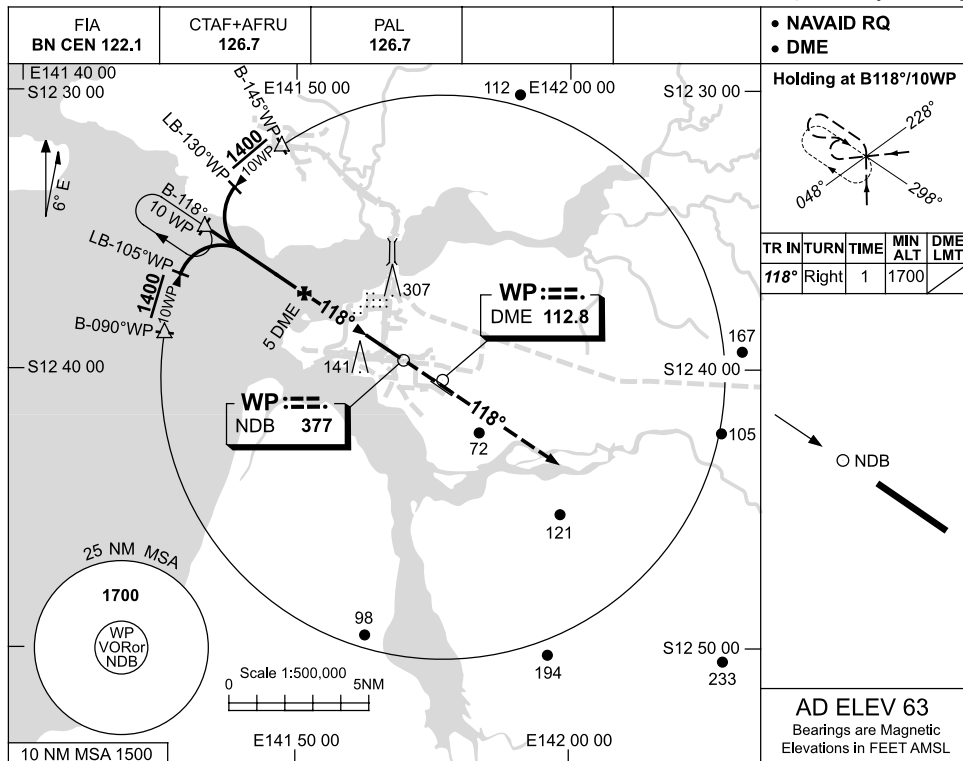
BWPGN02-128



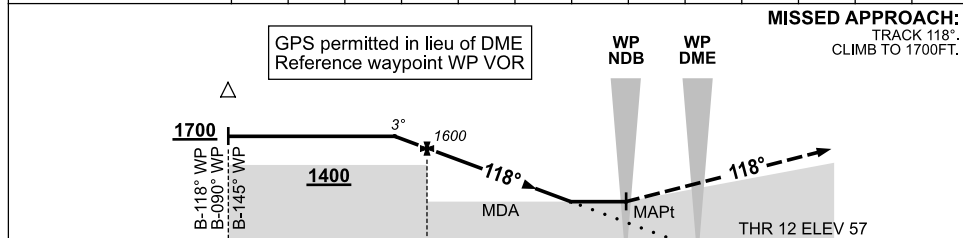
USE QNH

NDB-Z RWY 12  
WEIPA, QLD (YBWP)

25 AUG 2011



DIST BY DME	5.3	5	4	3	2	1.9	1.7						
ALT (3° APCH PATH)	1700	1600	1280	960	640	600	550						



NM BY DME

CATEGORY	A	B	C	D
S-I NDB/DME	<b>550 (487-2.7)</b>			
CIRCLING	<b>740 (677-2.4)</b>	<b>800 (737-4.0)</b>	<b>860 (797-5.0)</b>	
ALTERNATE	(1177-4.4)	(1237-6.0)	(1297-7.0)	

**NOTES**

1. MAX IAS:  
INITIAL : 210KT.
2. AWIS (PHONE)  
07 4069 9692

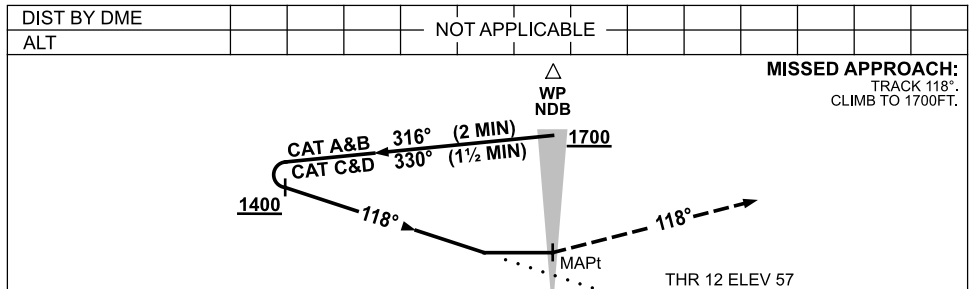
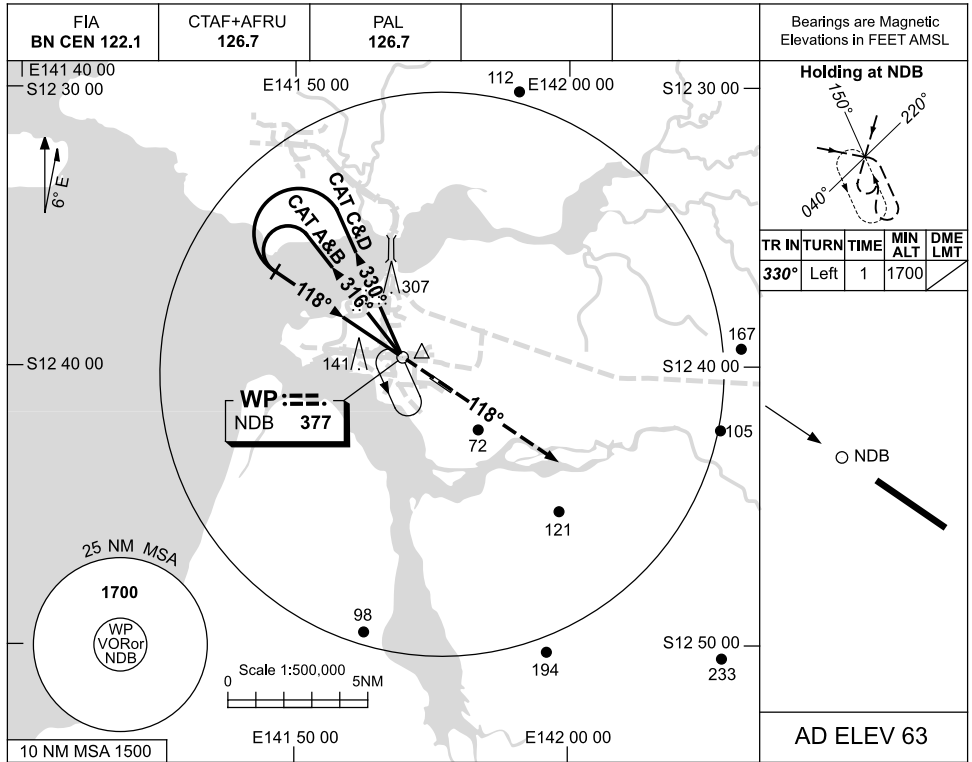
Changes: PAL.

BWPNB01-128

USE QNH

NDB-Y RWY 12  
WEIPA, QLD (YBWP)

25 AUG 2011



**NOTES**

CATEGORY	A	B	C	D
S-I NDB	<b>600 (537-3.0)</b>			
CIRCLING	<b>740 (677-2.4)</b>	<b>800 (737-4.0)</b>	<b>860 (797-5.0)</b>	
ALTERNATE	(1177-4.4)	(1237-6.0)	(1297-7.0)	

1. MAX IAS:  
INITIAL : 210KT.
2. AWIS (PHONE)  
07 4069 9692

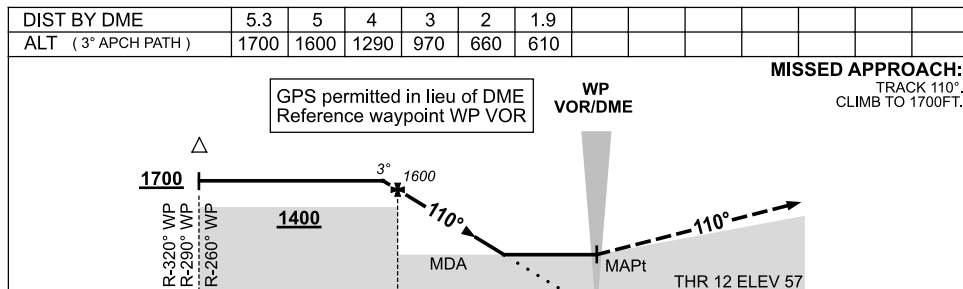
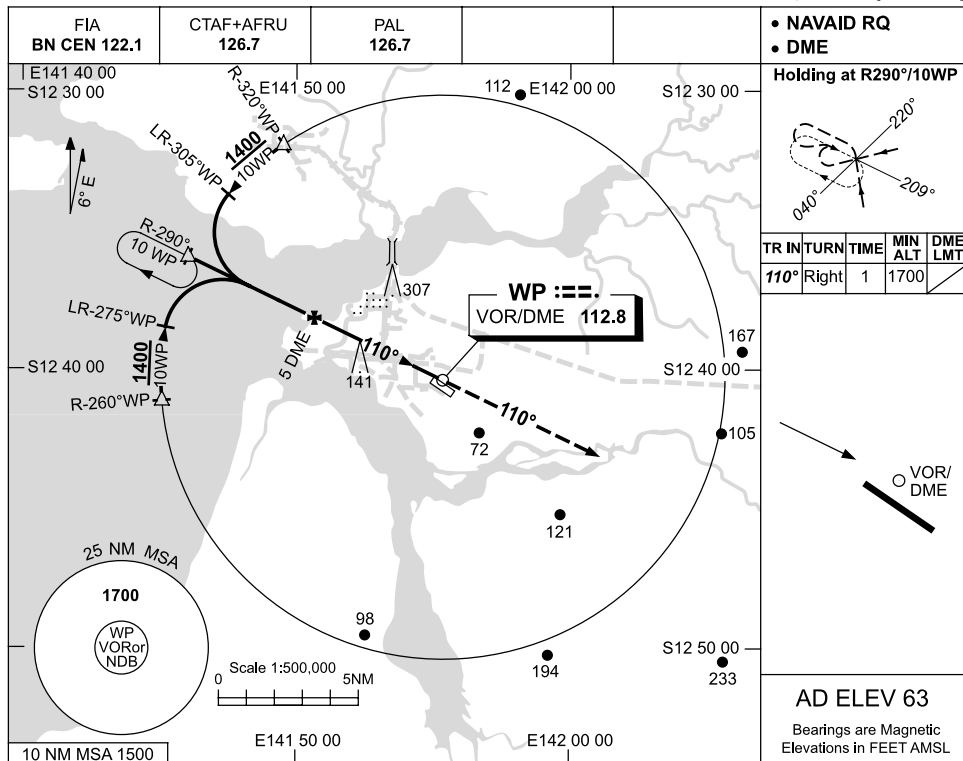
Changes: PAL.

BWPNB02-128

USE QNH

VOR-Z RWY 12  
WEIPA, QLD (YBWP)

25 AUG 2011



CATEGORY	A	B	C	D
S-I VOR/DME	<b>610 (547-3.0)</b>			
CIRCLING	<b>740 (677-2.4)</b>	<b>800 (737-4.0)</b>	<b>860 (797-5.0)</b>	
ALTERNATE	(1177-4.4)	(1237-6.0)	(1297-7.0)	

**NOTES**

- MAX IAS:  
INITIAL : 210KT.
- AWIS (PHONE)  
07 4069 9692

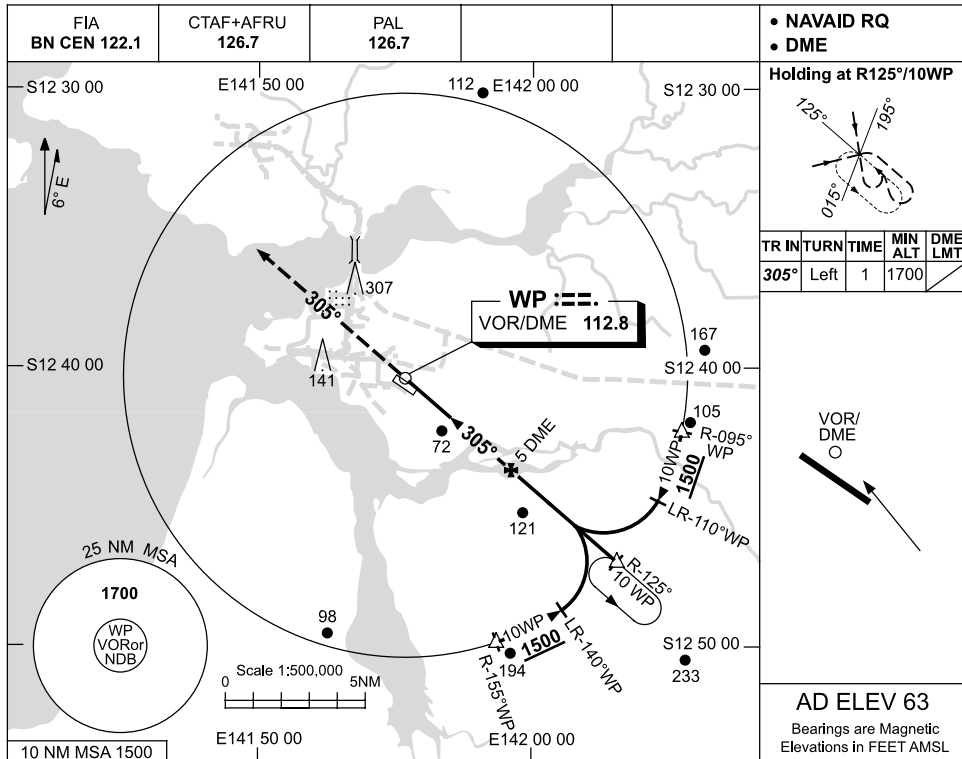
Changes: PAL.

BWPVO01-128

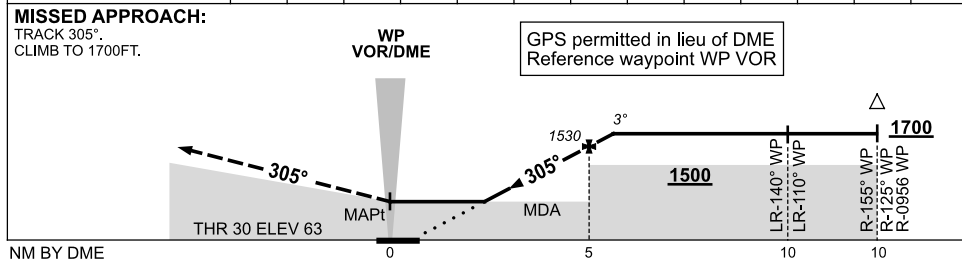
USE QNH

VOR-Z RWY 30  
WEIPA, QLD (YBWP)

25 AUG 2011



DIST BY DME	2.1	2.5	3	4	5	5.5				
ALT (3° APCH PATH)	610	740	890	1210	1530	1700				



**NOTES**

CATEGORY	A	B	C	D
S-I VOR/DME	<b>610 (547-3.0)</b>			
CIRCLING	<b>740 (677-2.4)</b>	<b>800 (737-4.0)</b>	<b>860 (797-5.0)</b>	
ALTERNATE	(1177-4.4)	(1237-6.0)	(1297-7.0)	

- MAX IAS: INITIAL : 210KT.
- AWIS (PHONE) 07 4069 9692

Changes: PAL.

BWPVO02-128



