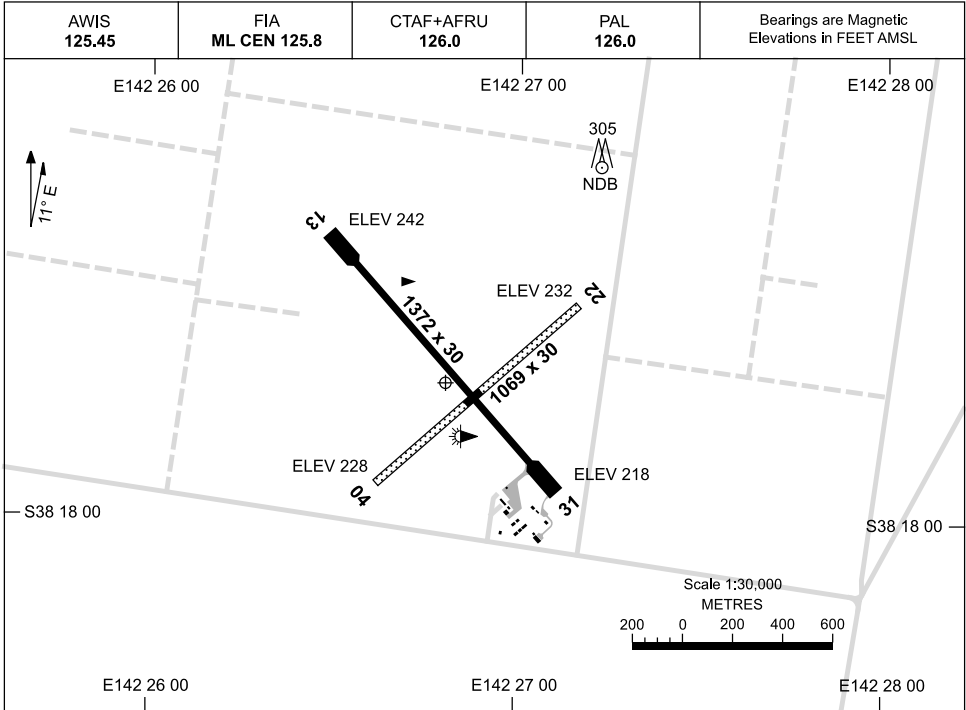


17 NOV 2011

AD ELEV 242
S38 17 43 E142 26 48

AERODROME CHART
WARRNAMBOOL, VIC (YWBL)



AERODROME LIGHTING	
RWY	TAXIWAY : SIDELINE BLUE RL : PILOT ACTIVATED 126.0 , SDBY PWR (20 MIN PN)
13 ¹²⁷	LIRL
³⁰⁷ 31	LIRL
04 ⁰³⁷	NIL
²¹⁷ 22	NIL

NOTES

1. AWIS (PHONE) 03 5565 9415
2. PAL+AFRU REQUIRES THREE ONE-SECOND PULSES TO ACTIVATE.

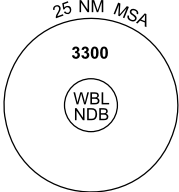
Changes: LOGO.

WBLAD01-129

GPS ARRIVAL PROCEDURES WARRNAMBOOL, VIC (YWBL)

17 NOV 2011

AWIS 125.45	FIA ML CEN 125.8	CTAF+AFRU 126.0	PAL 126.0		Bearings are Magnetic Elevations in FEET AMSL
-----------------------	----------------------------	---------------------------	---------------------	--	--



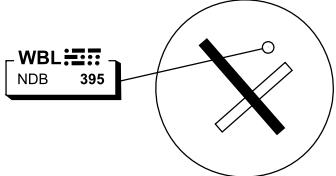
25 NM MSA

3300

WBL NDB

GPS REFERENCE WAYPOINT WBL NDB

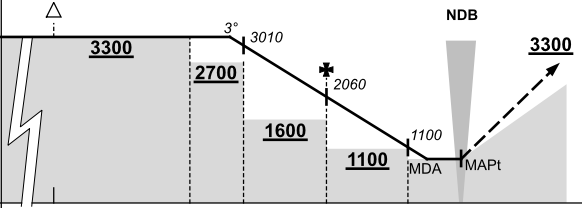
AWIS (PHONE) 03 5565 9415



WBL NDB 395

10 NM MSA 1900

AD ELEV 242

ALL TRACKS TO WBL NDB											<p>MISSED APPROACH:</p> <p>TURN AS REQUIRED, TRACK 270°. CLIMB TO 3300FT.</p>			
	NM FM NDB	25	15	10	8	5	2	0						
CIRCLING MINIMA			A,B: 850-2.4			C: 1070-4.0			D: N/A					
NM FM NDB	8.9	8	7	6	5	4	3	2	1.9	1.2				
ALT (3° APCH PATH)	3300	3010	2690	2370	2060	1740	1420	1100	1070	850				

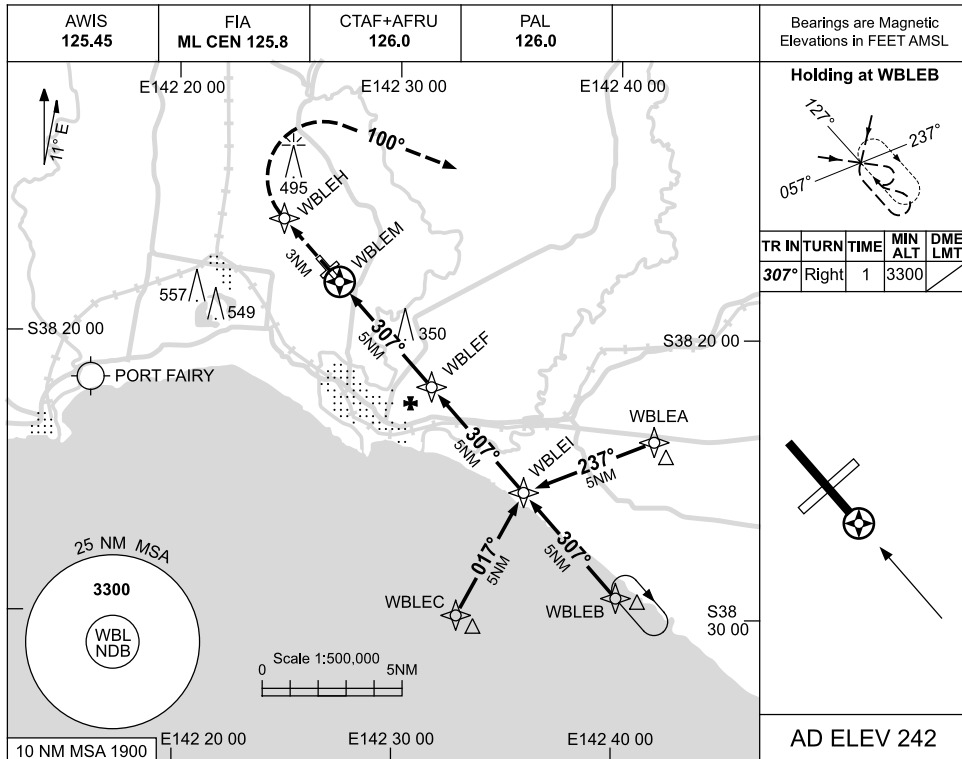
WBLDG01-129

USE QNH

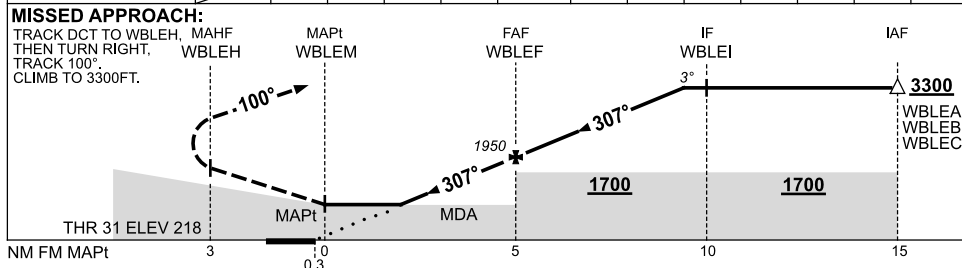
RNAV (GNSS) RWY 31

WARRNAMBOOL, VIC (YWBL)

17 NOV 2011



NM TO NEXT WPT	WBLEM	1.2	2	3	4	WBLEF	1	2	3	4	4.3		
ALT (3° APCH PATH)		730	990	1310	1630	1950	2260	2580	2900	3220	3300		



NOTES

1. MAX IAS:
INITIAL : 210KT.
2. AWIS (PHONE)
03 5565 9415

CATEGORY	A	B	C	D
S-I GNSS	730 (512-2.9)			NOT APPLICABLE
CIRCLING	850 (608-2.4)		1070 (828-4.0)	
ALTERNATE	(1108-4.4)		(1328-6.0)	

Changes: PORT FAIRY ALA, LOGO, Editorial.

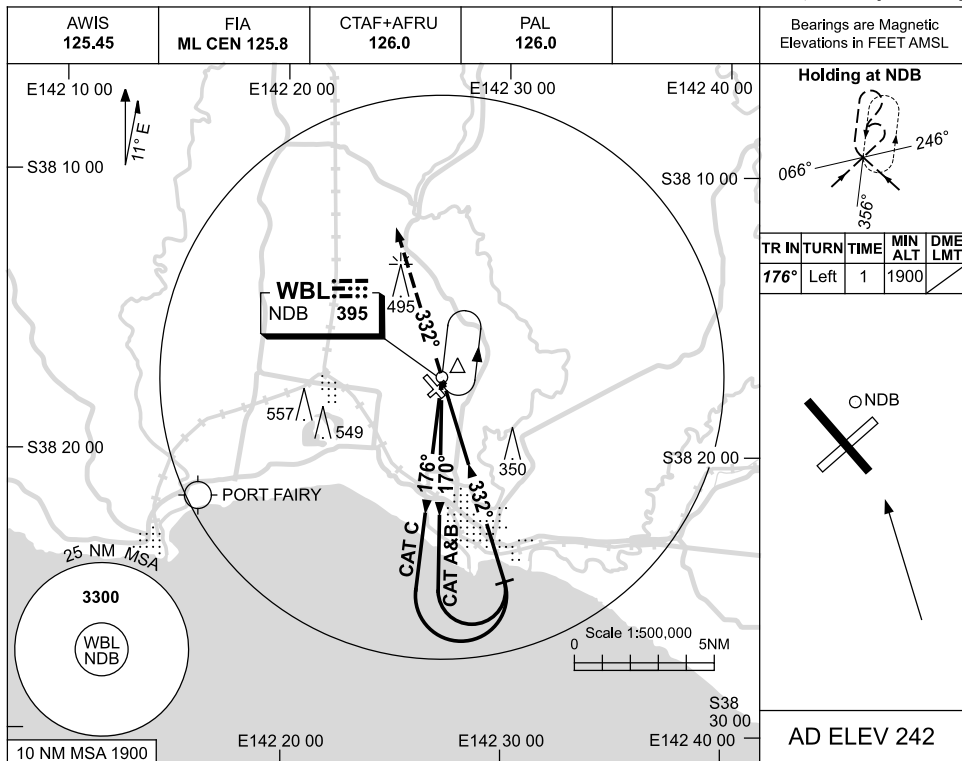
WBLGN01-129

USE QNH

NDB-A

WARRNAMBOOL, VIC (YWBL)

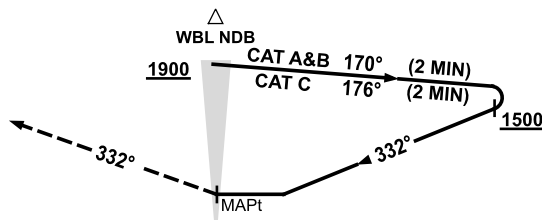
17 NOV 2011



DME DIST	NOT APPLICABLE									
ALT										

MISSED APPROACH:

TRACK 332°
CLIMB TO 1900FT.



NOTES

CATEGORY	A	B	C	D
				NOT APPLICABLE
CIRCLING	850 (608-2.4)		1070 (828-4.0)	
ALTERNATE	(1108-4.4)		(1328-6.0)	

1. MAX IAS:
INITIAL : 210KT.
2. AWIS (PHONE)
03 5565 9415

Changes: PORT FAIRY ALA, LOGO, Editorial.

WBLNB01-129