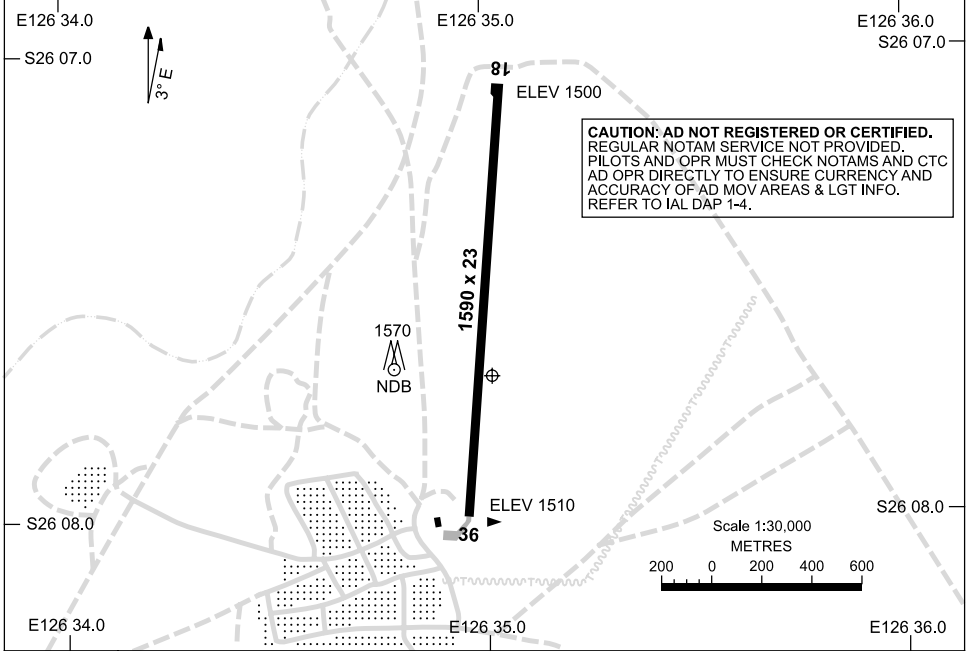


12 MAR 2009

AD ELEV 1510  
S26 07.7 E126 35.0

**AERODROME CHART**  
**WARBURTON, WA (YWBR)**

FIA ML CEN 130.9	CTAF 127.1	PAL 119.65	Bearings are Magnetic Elevations in FEET AMSL
---------------------	---------------	---------------	--



<b>RWY</b>	<b>AERODROME LIGHTING</b>
	RL : PAL 119.65 ; PTBL PN
<b>18</b> <small>181</small> <small>001</small> <b>36</b>	LIRL

**NOTES**

Changes: CAUT NOTE, TURNING NODE, Editorial.

WBRAD01-118

# GPS ARRIVAL PROCEDURES WARBURTON, WA (YWBR)

12 MAR 2009

FIA ML CEN 130.9	CTAF 127.1	PAL 119.65			Bearings are Magnetic Elevations in FEET AMSL
---------------------	---------------	---------------	--	--	--

**GPS REFERENCE WAYPOINT WBR NDB**

25 NM MSA  
3300  
WBR NDB

**CAUTION: AD NOT REGISTERED OR CERTIFIED.**  
REGULAR NOTAM SERVICE NOT PROVIDED.  
PILOTS AND OPR MUST CHECK NOTAMS AND CTC  
AD OPR DIRECTLY TO ENSURE CURRENCY AND  
ACCURACY OF AD MOV AREAS & LGT INFO.  
REFER TO IAL DAP 1-4.

WBR NDB 218

\* NO CIRCLING

10 NM MSA 3200

\* NO CIRCLING EAST  
OF RWY 18/36.

AD ELEV 1510

**ALL TRACKS  
TO  
WBR NDB**

**MISSED APPROACH:**  
CLIMB ON TRACK  
TO 3300FT.

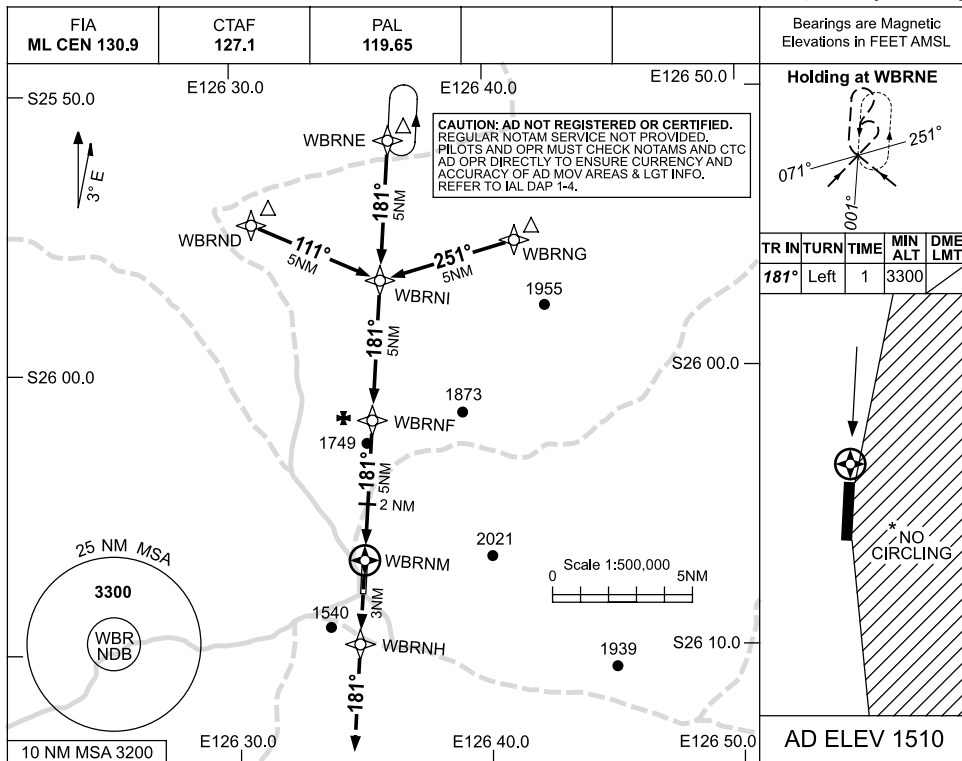
NM FM NDB	25	15	5	2	0													
<b>CIRCLING MINIMA</b>				<b>A,B: 2120-2.4</b>	<b>C: 2350-4.0</b>	<b>D: N/A</b>												
NM FM NDB	4.5	4	3	2	1.5	0.8												
ALT (3° APCH PATH)	3300	3140	2820	2500	2350	2120												

WBRDG01-118

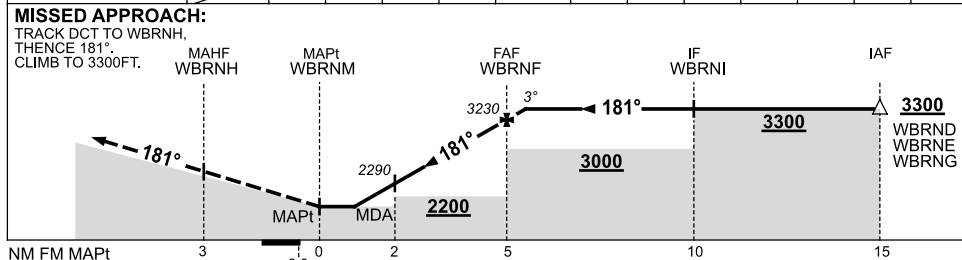
USE QNH

RNAV-N<sup>(GNSS)</sup>  
**WARBURTON, WA (YWBR)**

12 MAR 2009



NM TO NEXT WPT	WBRNM	1.4	2	3	4	WBRNF	0.2				
ALT (3° APCH PATH)		2120	2290	2600	2920	3230	3300				



**NOTES**

CATEGORY	A	B	C	D
CIRCLING *	2120 (610-2.4)		2350 (840-4.0)	
ALTERNATE	(1110-4.4)		(1340-6.0)	

1. MAX IAS:  
INITIAL : 210KT.
- \* 2. NO CIRCLING EAST  
OF RWY 18/36.

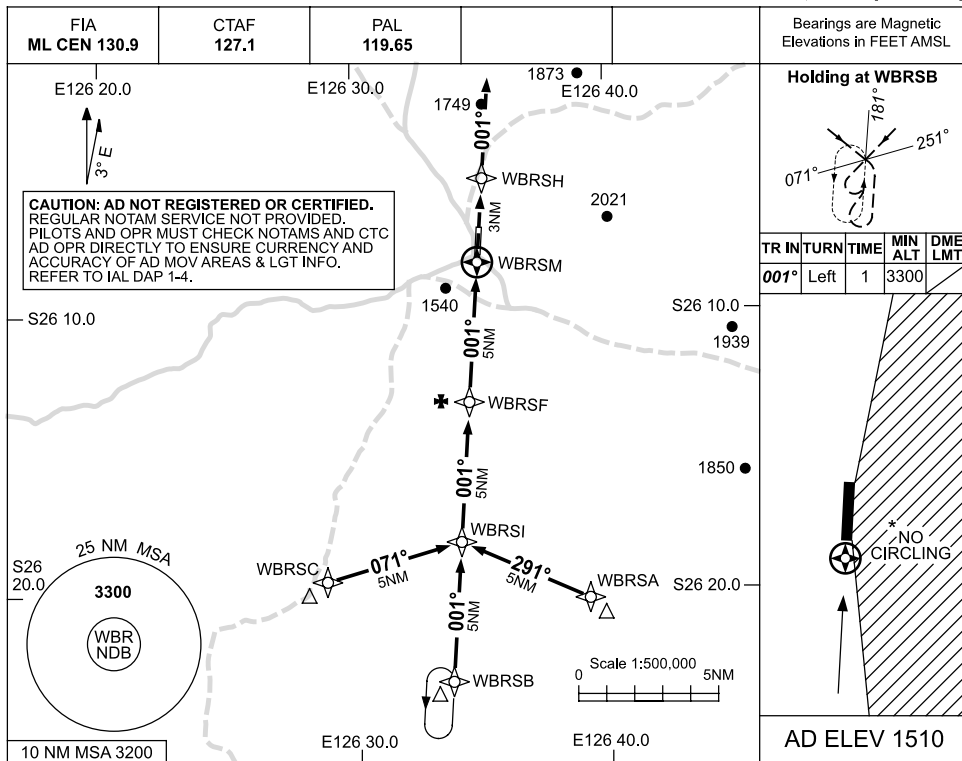
Changes: PROC NAME, CAUT NOTE, Editorial.

WBRGN01-118

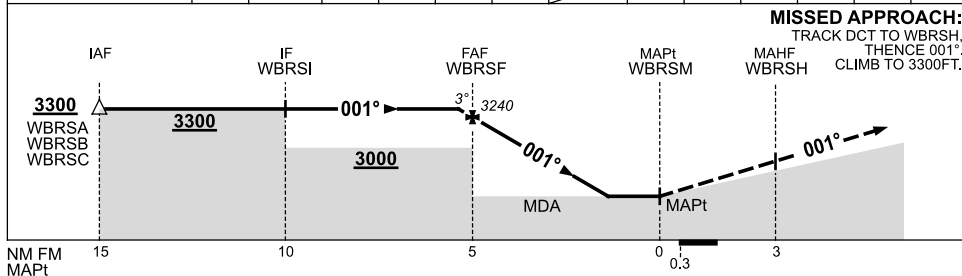
USE QNH

RNAV-S (GNSS)  
**WARBURTON, WA (YWBR)**

12 MAR 2009



NM TO NEXT WPT	0.2	WBRSF	4	3	2	1.5	WBRSM				
ALT (3° APCH PATH)	3300	3240	2910	2590	2280	2120					



**NOTES**

CATEGORY	A	B	C	D
				NOT APPLICABLE
CIRCLING *	2120 (610-2.4)		2350 (840-4.0)	
ALTERNATE	(1110-4.4)		(1340-6.0)	

- 1. MAX IAS:  
INITIAL : 210KT.
- \*2. NO CIRCLING EAST  
OF RWY 18/36.

Changes: PROC NAME, CAUT NOTE, Editorial.

WBRGN02-118

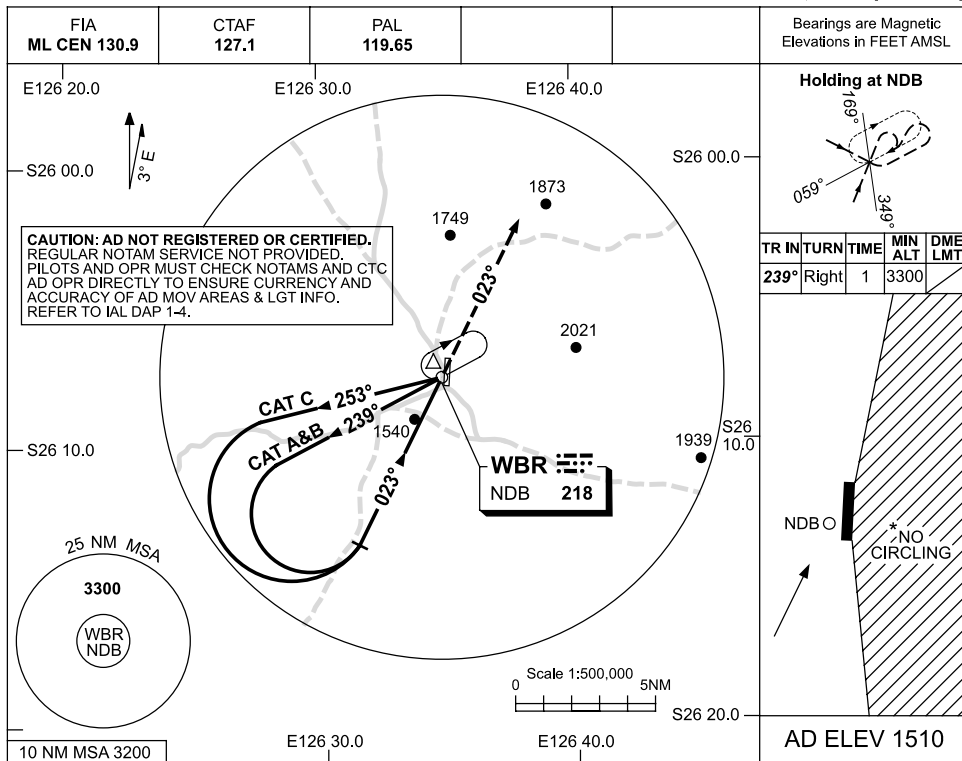


USE QNH

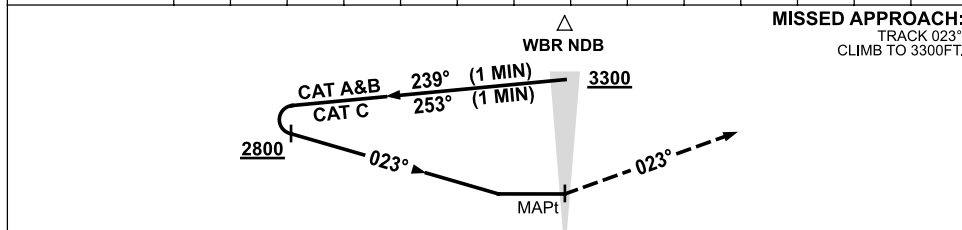
NDB-A

**WARBURTON, WA (YWBR)**

12 MAR 2009



DME DIST	NOT APPLICABLE									
ALT										



**NOTES**

CATEGORY	A	B	C	D
CIRCLING *	<b>2120</b> (610-2.4)		<b>2350</b> (840-4.0)	
ALTERNATE	(1110-4.4)		(1340-6.0)	
	NOT APPLICABLE			

- 1. MAX IAS: INITIAL : 210KT.
- \* 2. NO CIRCLING EAST OF RWY 18/36.

Changes: PROC NAME, CAUT NOTE, Editorial.

WBRNB01-118