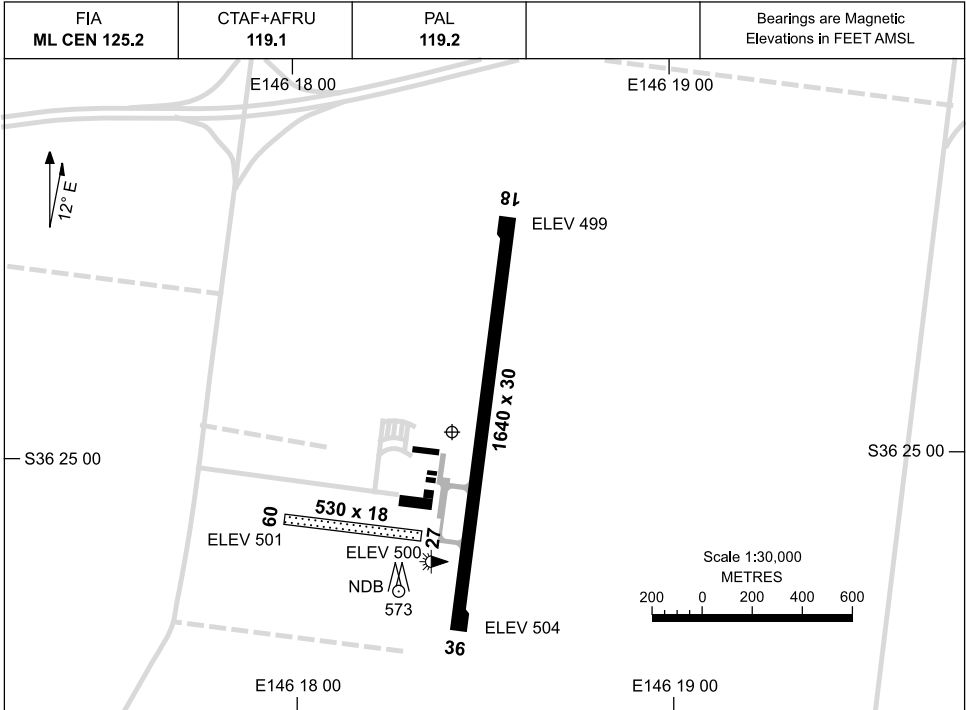


17 NOV 2011

AD ELEV 504  
S36 24 57 E146 18 25

AERODROME CHART  
**WANGARATTA, VIC (YWGT)**



**AERODROME LIGHTING**

<b>RWY</b>	TAXIWAY : SIDELINE BLUE RL : PILOT ACTIVATED 119.2
<b>18</b> <sup>177</sup>	LIRL
357 <b>36</b>	LIRL
<b>09</b> <sup>086</sup>	NIL
266 <b>27</b>	NIL

**NOTES**

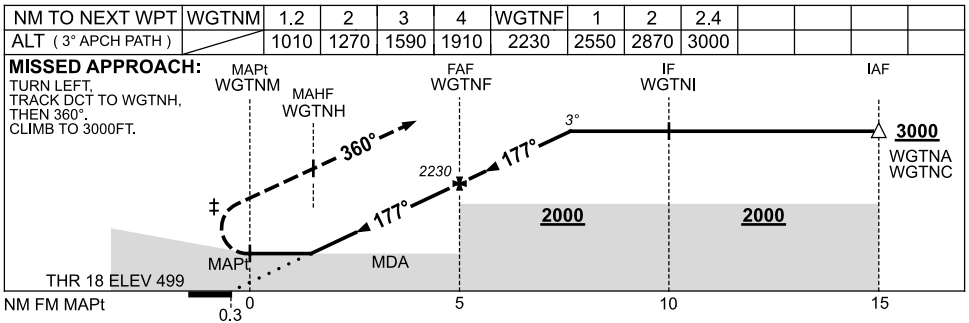
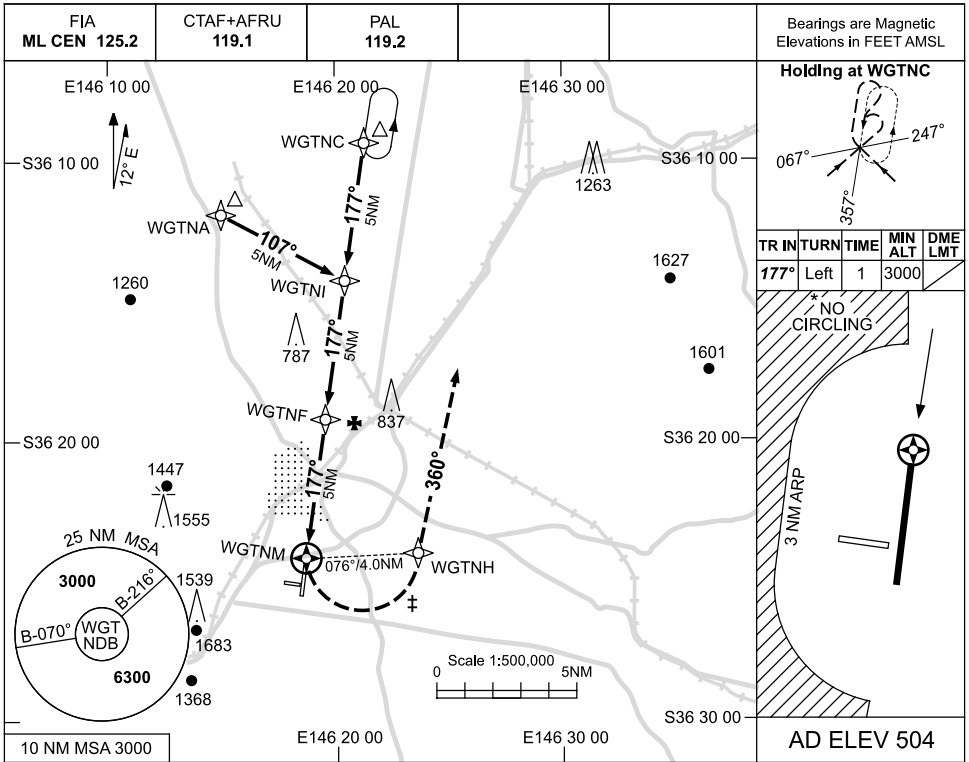
AWIS (PHONE) 03 5722 3713

USE QNH

RNAV<sub>(GNSS)</sub> RWY 18

WANGARATTA, VIC (YWGT)

17 NOV 2011



**NOTES**

- 1. MAX IAS:  
INITIAL : 210KT.  
‡ MAP TURN: 180KT.
- \* 2. NO CIRCLING WEST OF RWY 18/36 BEYOND 3 NM.
- 3. AWIS (PHONE)  
03 5722 3713

CATEGORY	A	B	C	D
S-I GNSS	1010 (506-2.8)			NOT APPLICABLE
CIRCLING *	1170 (666-2.4)		1350 (846-4.0)	
ALTERNATE	(1166-4.4)		(1346-6.0)	

Changes: LOGO.

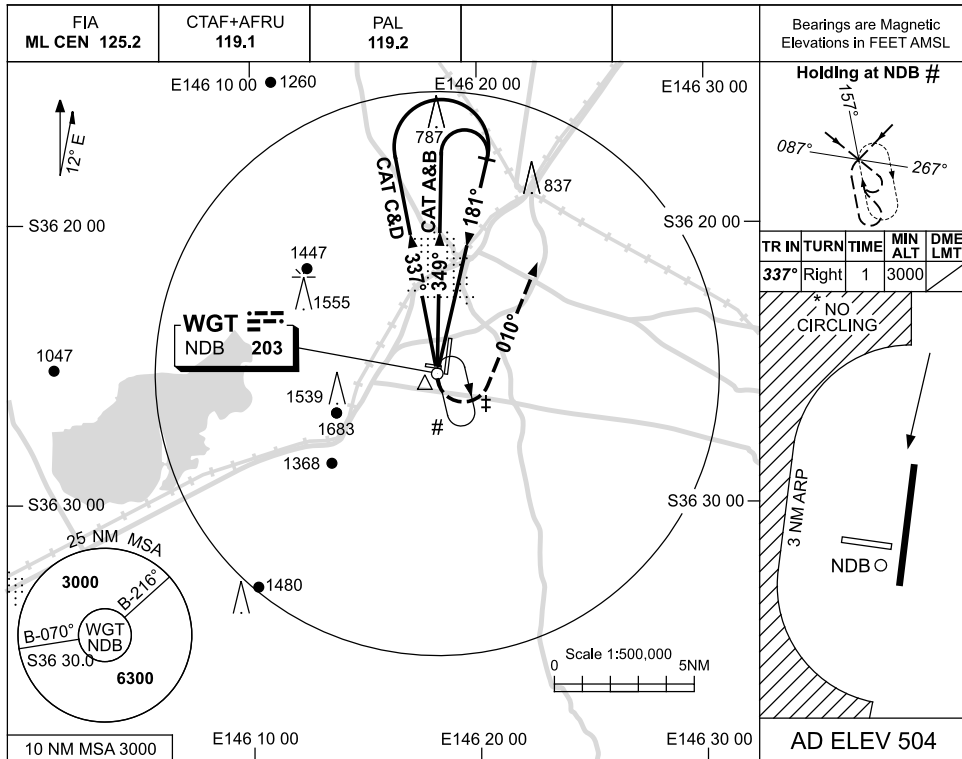
WGTGN01-129

USE QNH

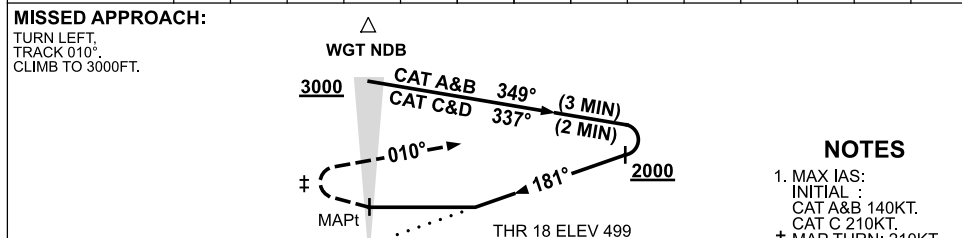
NDB RWY 18

WANGARATTA, VIC (YWGT)

17 NOV 2011



DME DIST	NOT APPLICABLE				
ALT					



**NOTES**

1. MAX IAS:  
INITIAL : CAT A&B 140KT.  
CAT C 210KT.  
‡ MAP TURN: 210KT.
- \* 2. NO CIRCLING WEST OF RWY 18/36 BEYOND 3 NM.
- #3. YBLA RNAV RWY 26 HOLDING, INITIAL AND INTERMEDIATE SEGMENTS INFRINGE HOLDING PATTERN TOLERANCES.
4. AWIS (PHONE) 03 5722 3713

CATEGORY	A	B	C	D
S-I NDB	<b>1100</b> (596-3.3)			
CIRCLING *	<b>1170</b> (666-2.4)	<b>1350</b> (846-4.0)	<b>1350</b> (846-5.0)	
ALTERNATE	(1166-4.4)	(1346-6.0)	(1346-7.0)	

Changes: LOGO, Editorial.

WGNTNB01-129