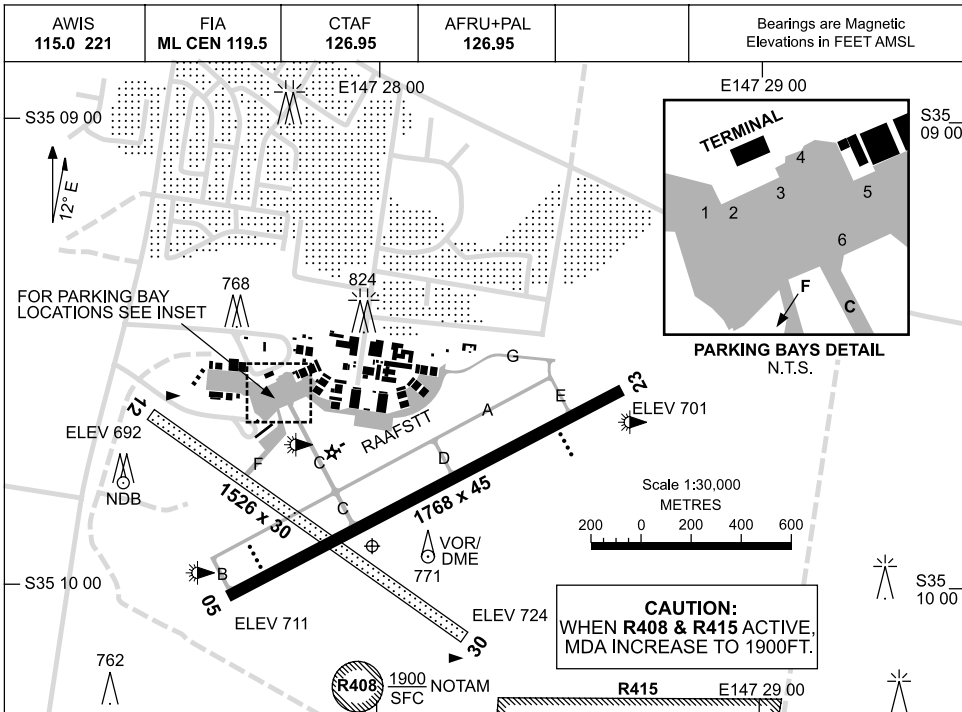


25 AUG 2011

AD ELEV 724
S35 09 55 E147 27 59

AERODROME CHART
WAGGA WAGGA, NSW (YSWG)



		AERODROME LIGHTING	
RWY		ABN : ALT W/G	
		TAXIWAYS : SIDELINE BLUE	
		RL : AFRU+PAL 126.95 , SDBY , PTBL	
05	<i>050</i>	PAPI LEFT SIDE 3.0° 51FT LIRL (HN ONLY)	
<i>230</i>	23	PAPI LEFT SIDE 3.0° 51FT LIRL (HN ONLY)	
12	<i>114</i>	NIL	
<i>294</i>	30	NIL	

NOTES

1. TWY A NOT AVAILABLE TO ACFT ABV 13500KG MTOW.
2. TWY G AVAILABLE TO MIL ACFT ONLY.
3. TWY B & E NOT AVAILABLE TO ACFT ABV 5700KG.
4. PARKING BAYS 1 TO 4 AVBL FOR RPT ACFT ONLY.
5. ACFT ARE NOT PERMITTED TO TRANSIT THE RAAFSTT TARMAC AREAS. ACCESS TO TWY G IS VIA TWY A ONLY.

Changes: ARP COORD.

SWGAD01-128

DME or GPS ARRIVAL PROCEDURES WAGGA WAGGA, NSW (YSWG)

10 MAR 2011

AWIS 115.0 221	FIA ML CEN 119.5	CTAF 126.95	AFRU+PAL 126.95	Bearings are Magnetic Elevations in FEET AMSL
-------------------	---------------------	----------------	--------------------	--

**DME USING WG DME
GPS REFERENCE WAYPOINT WG VOR**

WG
NDB 221

WG
VOR/DME 115.0

* NO CIRCLING IN SECTOR SOUTH OF RWY 05/23 AND RWY 12/30 BEYOND 3.5NM.

AD ELEV 724

AY TO WG

MISSED APPROACH:
TRACK 013°. CLIMB TO 4700FT.

CAUTION:
WHEN R408 ACTIVE, CAT A, B & C MDA INCREASE TO 1900FT

NM FM VOR	25	15	10	5	4	3	2	1.4	1.3						
CIRCLING MINIMA	A,B: 1780-2.4			C: 1810-4.0		D: 2010-5.0									
NM FM VOR	7	6	5	4	3	2	1.4	1.3							
ALT (3° APCH PATH)	3600	3280	2960	2640	2320	2010	1810	1780							

COR TO WG

MISSED APPROACH:
TURN LEFT, TRACK 350°. CLIMB TO 4700FT.

CAUTION:
WHEN R408 ACTIVE, CAT A, B & C MDA INCREASE TO 1900FT

NM FM VOR	25	15	10	5	4	3	2	1.6	1.3						
CIRCLING MINIMA	A,B: 1710-2.4			C: 1810-4.0		D: 2010-5.0									
NM FM VOR	6	5	4	3	2.2	2	1.6	1.3							
ALT (3° APCH PATH)	3200	2890	2570	2250	2010	1930	1810	1710							

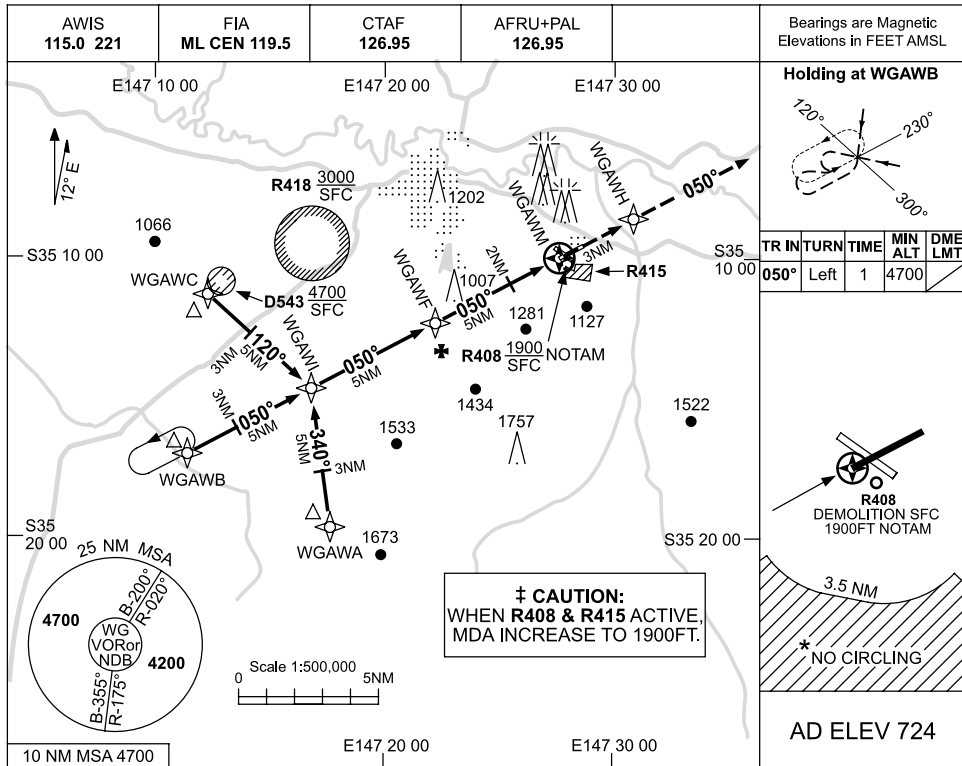


USE QNH

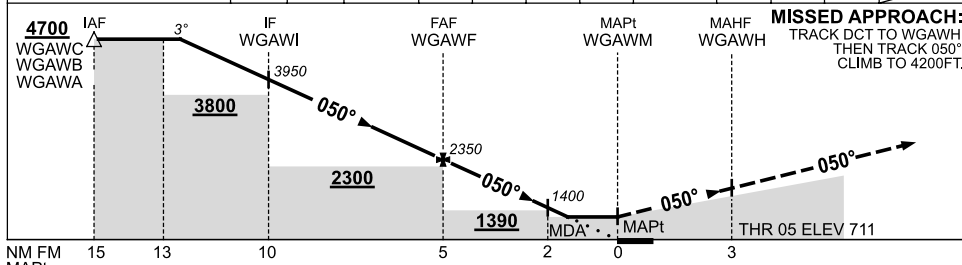
RNAV-Z RWY 05

10 MAR 2011

WAGGA WAGGA, NSW (YSWG)



NM TO NEXT WPT	2.4	1	WGAWI	4	3	2	1	WGAWF	4	3	1.8	WGAWM
ALT (3° APCH PATH)	4700	4260	3950	3630	3310	2990	2670	2350	2030	1720	1340	



NOTES

1. MAX IAS:
INITIAL : 210KT.
- *2. NO CIRCLING IN SECTOR SOUTH OF RWY 05/23 AND RWY 12/30 BEYOND 3.5NM.

CATEGORY	A	B	C	D
S-I GNSS	±	1340 (629-3.6)		
CIRCLING *	±	1710 (986-2.4)	1810 (1086-4.0)	2010 (1286-5.0)
ALTERNATE		(1486-4.4)	(1586-6.0)	(1786-7.0)

Changes: REVISED PROC.

SWGGN01-126

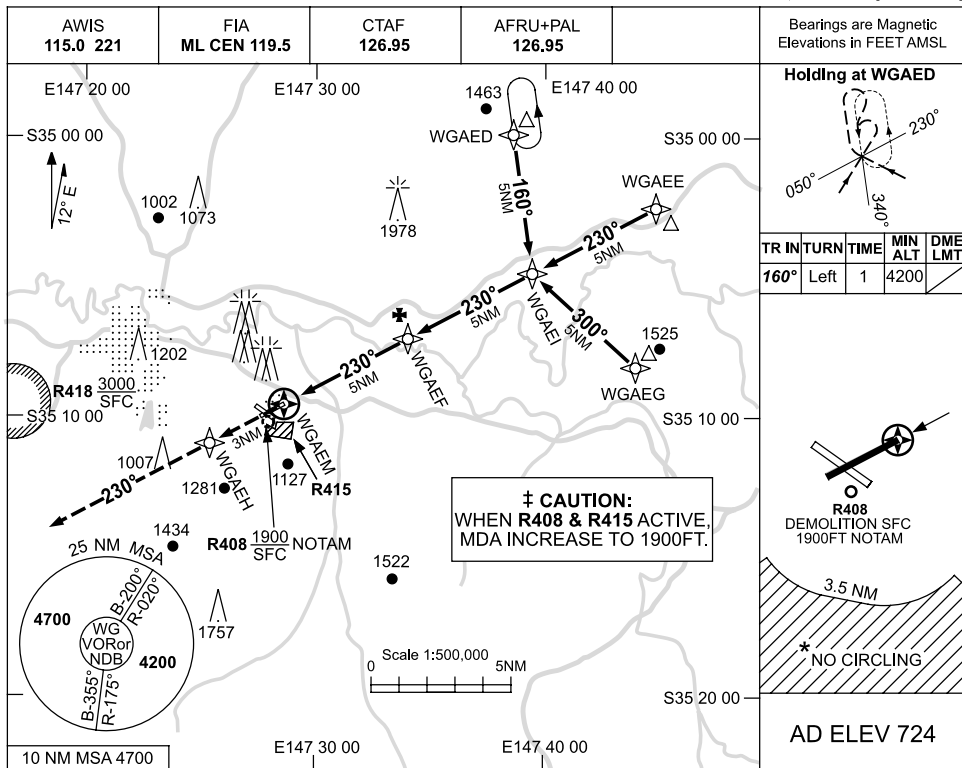


USE QNH

RNAV-Z RWY 23

10 MAR 2011

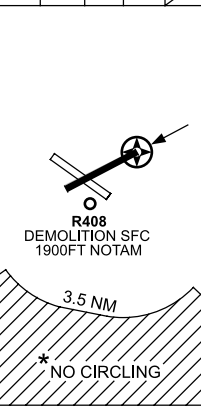
WAGGA WAGGA, NSW (YSWG)



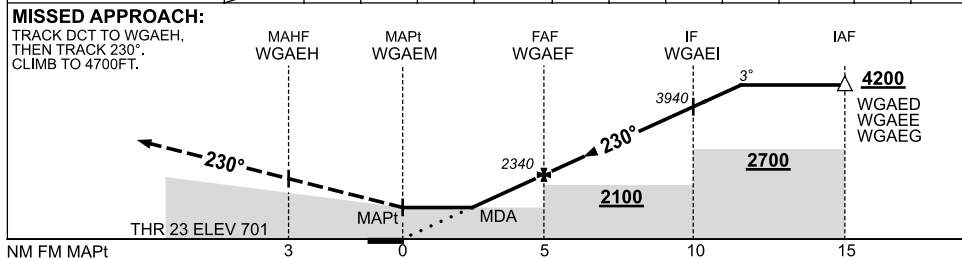
Bearings are Magnetic Elevations in FEET AMSL

Holding at WGAED

TR	IN	TURN	TIME	MIN ALT	DME LMT
160°	Left	1	4200		



NM TO NEXT WPT	WGAEM	2.3	3	4	WGAEF	1	2	3	4	WGAEI	0.8
ALT (3° APCH PATH)		1480	1710	2020	2340	2660	2980	3300	3620	3940	4200



NOTES

CATEGORY	A	B	C	D
S-I GNSS	‡	1470 (769-4.4)		
CIRCLING *	‡	1710 (986-2.4)	1810 (1086-4.0)	2010 (1286-5.0)
ALTERNATE		(1486-4.4)	(1586-6.0)	(1786-7.0)

- 1. MAX IAS: INITIAL : 210KT.
- * 2. NO CIRCLING IN SECTOR SOUTH OF RWY 05/23 AND RWY 12/30 BEYOND 3.5NM.

Changes: REVISED PROC.

SWGGN02-126

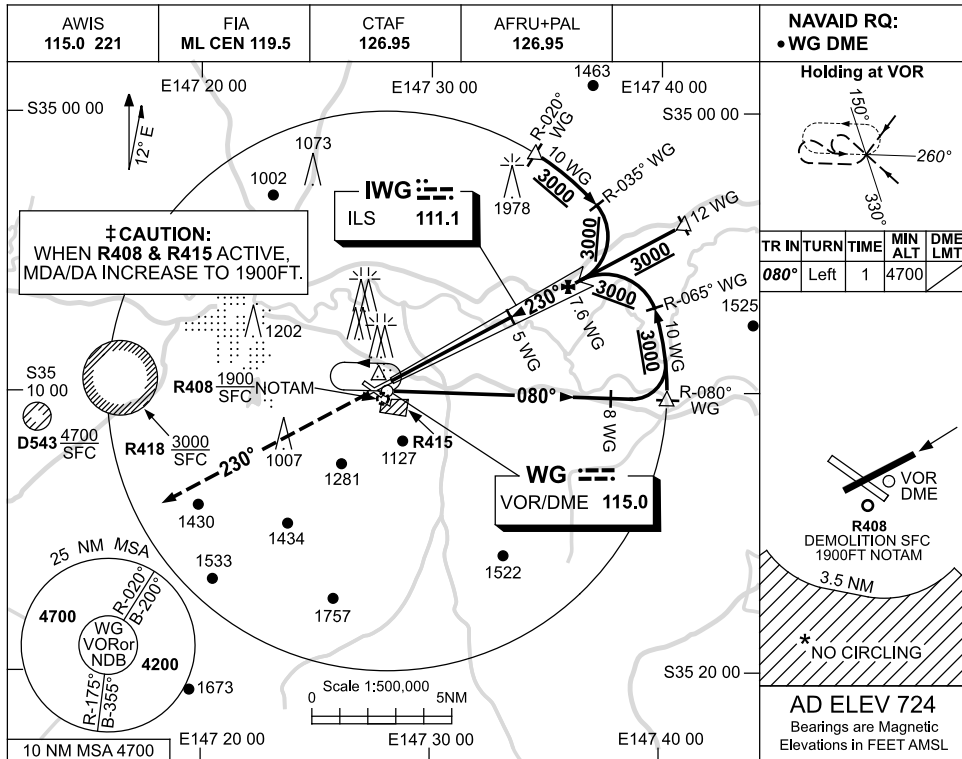


USE QNH

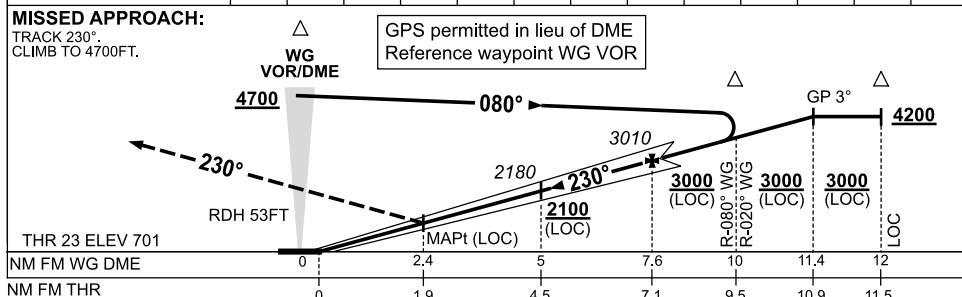
ILS-Y or LOC-Y RWY 23

WAGGA WAGGA, NSW (YSWG)

2 JUN 2011



DIST BY WG DME	2.8	3	4	5	6	7	8	9	10	11.4			
ALT (3° APCH PATH)	1470	1540	1860	2180	2490	2810	3130	3450	3770	4200			



- NOTES**
- * 1. NO CIRCLING IN SECTOR SOUTH OF RWY 05/23 AND RWY 12/30 BEYOND 3.5NM.
 - 2. MAX IAS: INITIAL : 210KT.
 - # 3. CAT D VIS 1.7 WITH ACTUAL QNH

CATEGORY	A	B	C	D
S-I ILS/DME	‡ 1030 (329)	1.8 (VIS 1.5 WITH ACTUAL QNH)		1110 (409) 2.3 #
S-I LOC/DME	‡	1470 (769-4.4)		
CIRCLING *	‡ 1710 (986-2.4)		1810 (1086-4.0)	2010 (1286-5.0)
ALTERNATE	(1486-4.4)		(1586-6.0)	(1786-7.0)

Changes: NOTES.

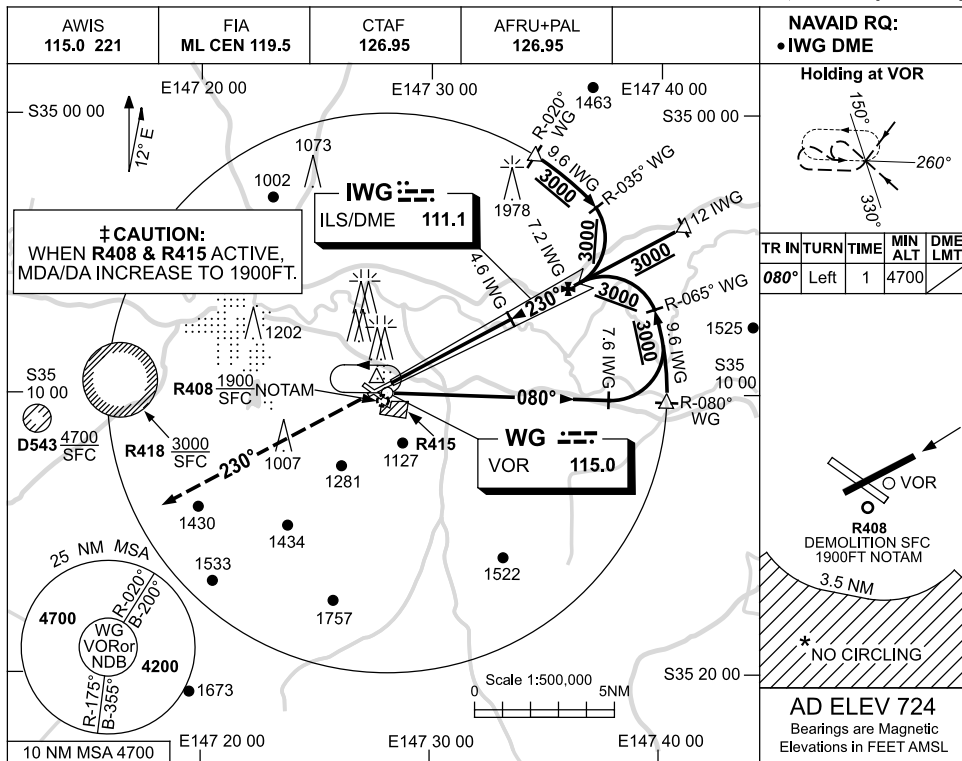
SWGII01-127

USE QNH

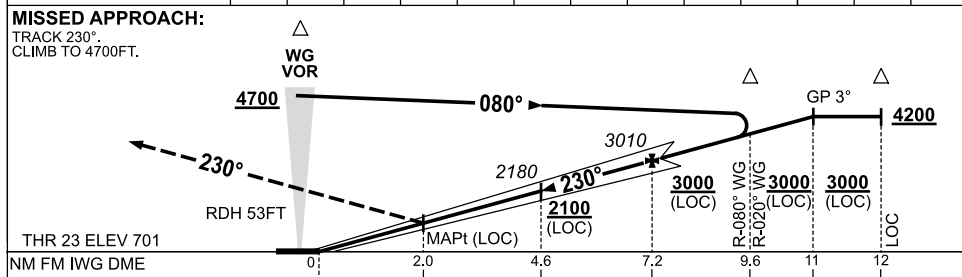
ILS-Z or LOC-Z RWY 23

2 JUN 2011

WAGGA WAGGA, NSW (YSWG)



DIST BY IWG DME	2.4	3	4	4.6	6	7	8	9	10	11			
ALT (3° APCH PATH)	1470	1660	1980	2180	2620	2930	3250	3570	3890	4200			



CATEGORY	A	B	C	D
S-I ILS/DME	‡ 1030 (329)	1.8 (VIS 1.5 WITH ACTUAL QNH)	1110 (409)	2.3#
S-I LOC/DME	‡	1470 (769-4.4)		
CIRCLING *	‡ 1710 (986-2.4)	1810 (1086-4.0)	2010 (1286-5.0)	
ALTERNATE	(1486-4.4)	(1586-6.0)	(1786-7.0)	

- NOTES**
- * 1. NO CIRCLING IN SECTOR SOUTH OF RWY 05/23 AND RWY 12/30 BEYOND 3.5NM.
 - 2. MAX IAS: INITIAL : 210KT.
 - # 3. CAT D VIS 1.7 WITH ACTUAL QNH

Changes: NOTES.

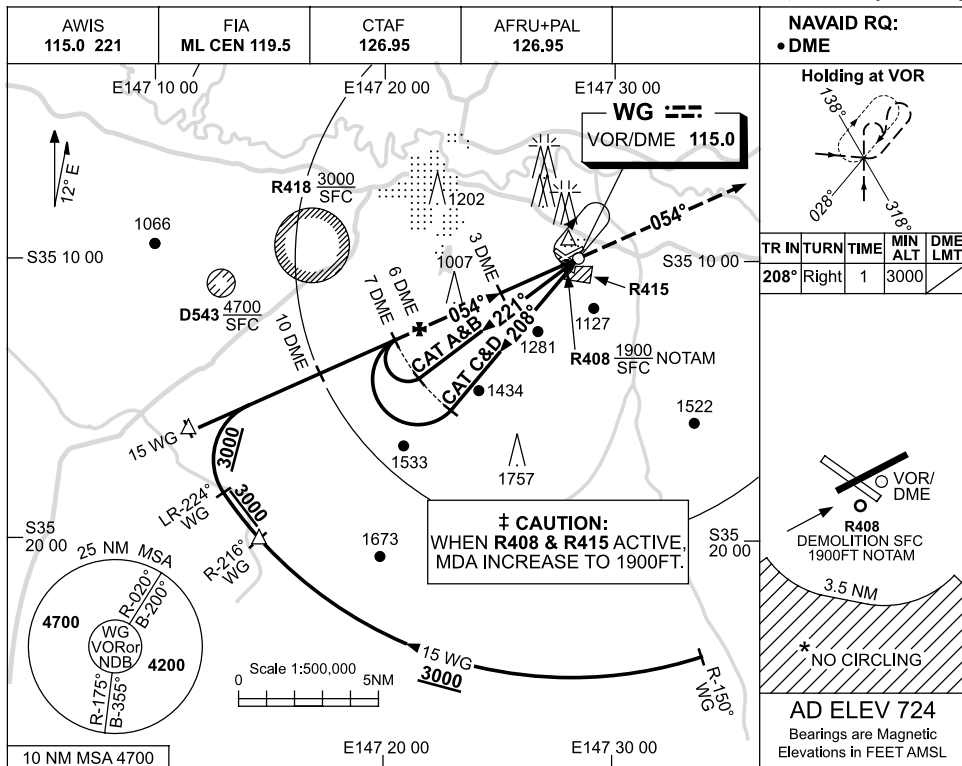
SWGII02-127

USE QNH

VOR RWY 05

10 MAR 2011

WAGGA WAGGA, NSW (YSWG)



NAVAID RQ:
• DME

Holding at VOR

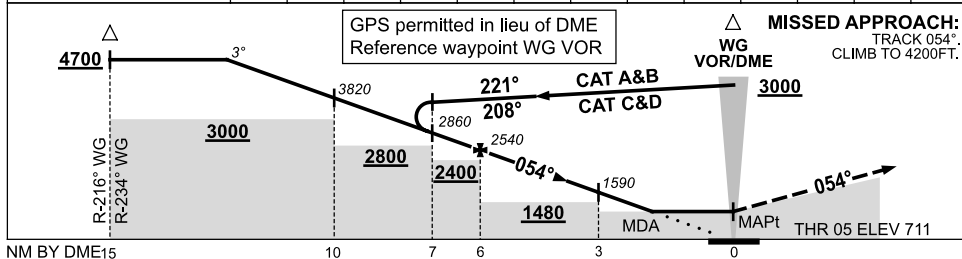
TR	IN	TURN	TIME	MIN ALT	DME LMT
208°	Right		1	3000	

⚠ CAUTION:
WHEN R408 & R415 ACTIVE,
MDA INCREASE TO 1900FT.

* NO CIRCLING

AD ELEV 724
Bearings are Magnetic
Elevations in FEET AMSL

DIST BY DME	12.8	12	11	10	9	8	7	6	5	4	3	2.2
ALT (3° APCH PATH)	4700	4450	4140	3820	3500	3180	2860	2540	2230	1910	1590	1340



NOTES

CATEGORY	A	B	C	D
S-I VOR/DME ‡	1340 (629-3.6)			
CIRCLING *	‡ 1710 (986-2.4)	1810 (1086-4.0)	2010 (1286-5.0)	
ALTERNATE	(1486-4.4)	(1586-6.0)	(1786-7.0)	

- MAX IAS:
INITIAL : 210KT.
- * NO CIRCLING IN SECTOR SOUTH OF RWY 05/23 AND RWY 12/30 BEYOND 3.5NM.

Changes: REVISED PROC.

SWGVO01-126

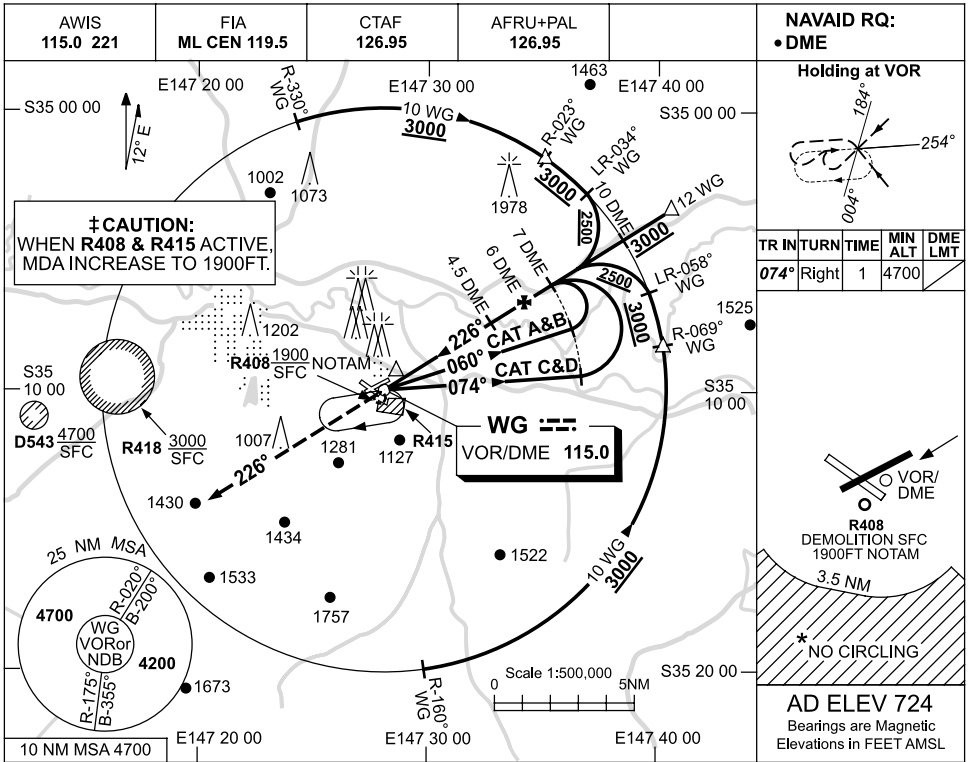


USE QNH

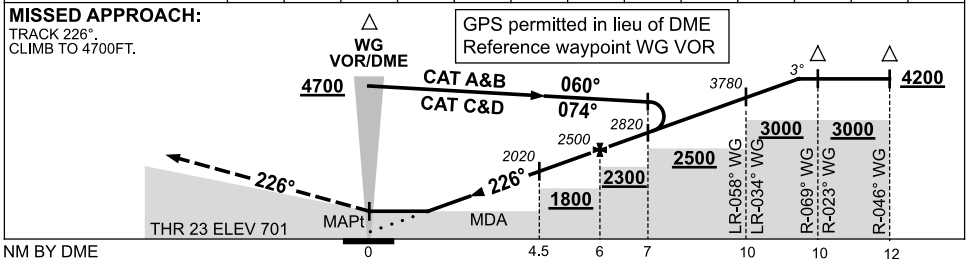
VOR RWY 23

10 MAR 2011

WAGGA WAGGA, NSW (YSWG)



DIST BY DME	2.8	3	4	4.5	5	6	7	8	9	10	11.3	
ALT (3° APCH PATH)	1500	1550	1870	2020	2180	2500	2820	3140	3460	3780	4200	



CATEGORY	A	B	C	D
S-I VOR/DME ‡	1500 (799-4.6)			
CIRCLING *	‡ 1710 (986-2.4)	1810 (1086-4.0)	2010 (1286-5.0)	
ALTERNATE	(1486-4.4)	(1586-6.0)	(1786-7.0)	

NOTES

- MAX IAS : INITIAL : 210KT.
- * 2. NO CIRCLING IN SECTOR SOUTH OF RWY 05/23 AND RWY 12/30 BEYOND 3.5NM.

Changes: REVISED PROC.

SWGVO02-126