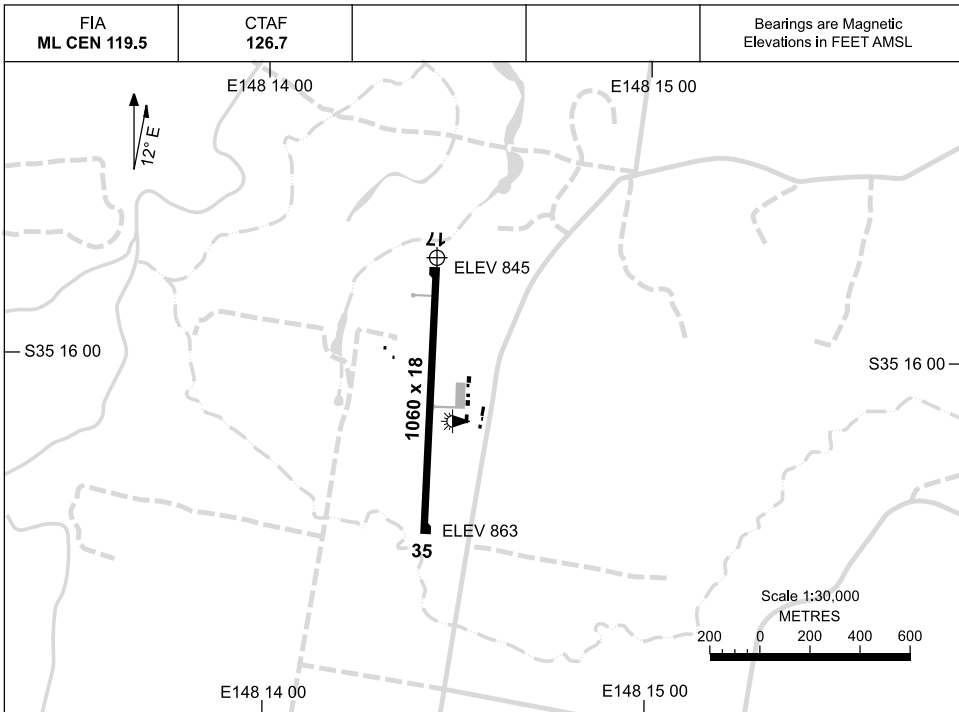


26 AUG 2010

AD ELEV 863
S35 15 46 E148 14 27

AERODROME CHART
TUMUT, NSW (YTMU)



	AERODROME LIGHTING
RWY	RL : EMERG ONLY
17 <small>170</small>	NIL
<small>350</small> 35	NIL

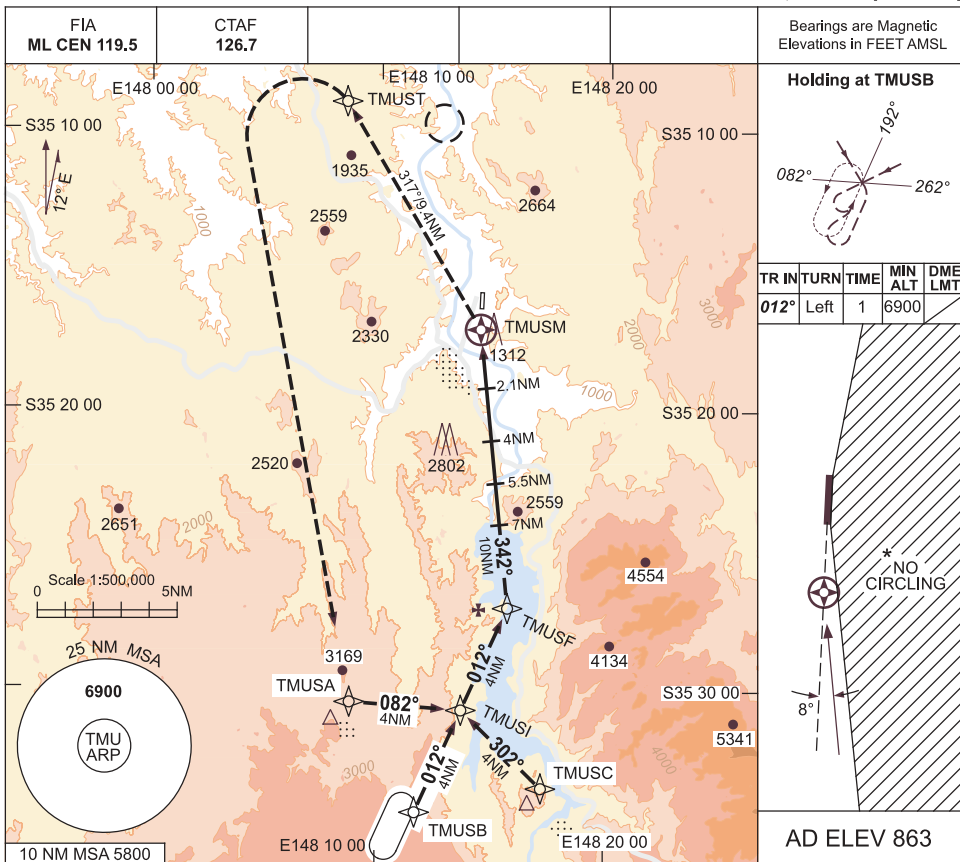
NOTES

1. GLIDING OPS HJ, JF.
2. HANG GLIDING OPS HJ.

USE QNH

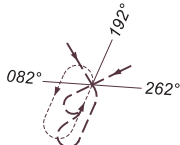
RNAV-S (GNSS)
TUMUT, NSW (YTMU)

26 AUG 2010



Bearings are Magnetic
Elevations in FEET AMSL

Holding at TMUSB

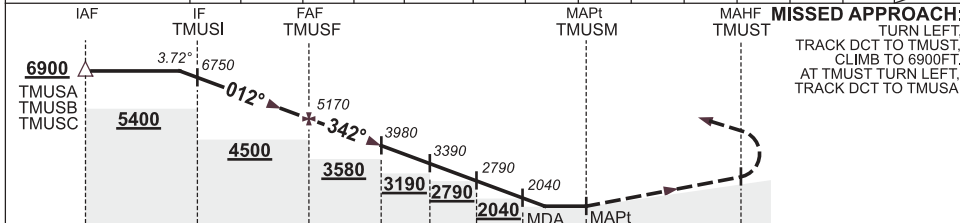


TR IN	TURN	TIME	MIN ALT	DME LMT
012°	Left	1	6900	



AD ELEV 863

NM TO NEXT WPT	0.4	TMUSI	2	1	TMUSF	9	8	7	5.5	4	3	2	1.8	TMUSM
ALT (3.72° APCH PATH)	6900	6750	5960	5560	5170	4770	4380	3980	3390	2790	2400	2000	1900	



MISSED APPROACH:
TURN LEFT, TRACK DCT TO TMUST, CLIMB TO 6900FT. AT TMUST TURN LEFT, TRACK DCT TO TMUSA.

NM FM MAPt 18 14 10 7 5.5 4 2.1 0.7 9.4

NOTES

- * 1. NO CIRCLING EAST OF RWY 17/35.
- 2. COLOUR: SEE SPEC NOTICES.

CATEGORY	A	B	C	D
CIRCLING *	1900 (1037-2.0)	2130 (1267-2.4)	NOT APPLICABLE	
ALTERNATE	(1537-4.0)	(1767-4.4)	NOT APPLICABLE	

Changes: TOPO, CO-ORD FORMAT, CONTOURS, NOTE 2.

TMUGN01-124

