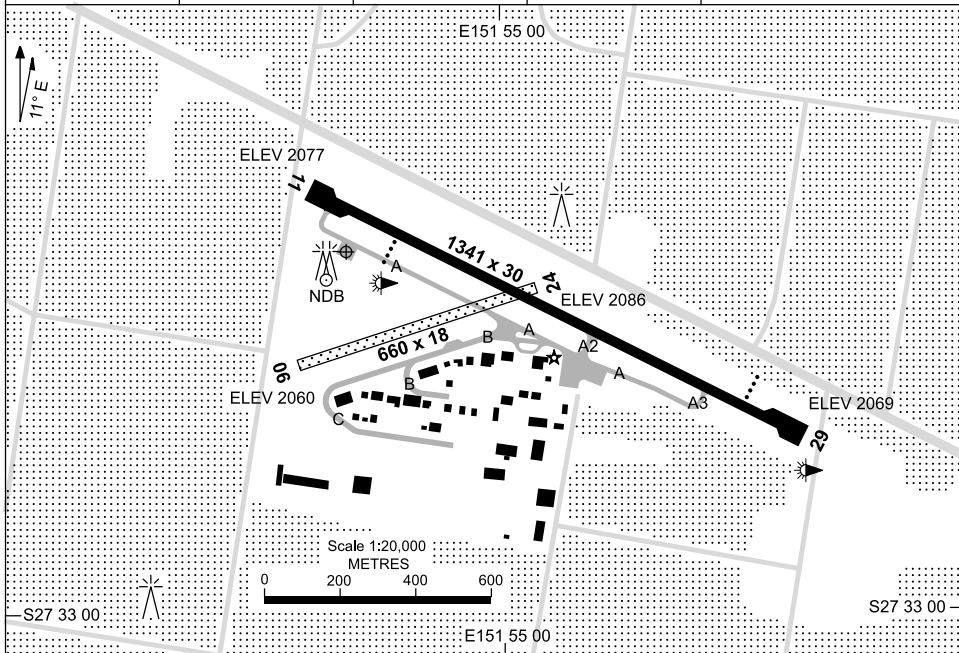


AD ELEV 2086
S27 32 29 E151 54 45

AERODROME CHART
TOOWOOMBA, QLD (YTWB)

8 MAR 2012

AWIS 127.05 386	FIA BN CEN 121.2	CTAF+AFRU 127.65	PAL 122.4	Bearings are Magnetic Elevations in FEET AMSL
--------------------	---------------------	---------------------	--------------	--



AERODROME LIGHTING

RWY	ABN : ALTN W/G 5 SEC TAXIWAY : CENTRELINE GREEN (TWY A, B) RL : PILOT ACTIVATED 122.4 , SDBY
11 ¹⁰⁶ 286 29	PAPI RIGHT SIDE 3.0° 45FT RTIL LIRL PAPI RIGHT SIDE 3.0° 45FT RTIL LIRL
06 ⁰⁶² 242 24	NIL NIL

NOTES

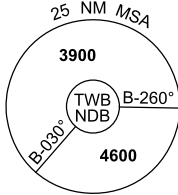
- CAUTION** : RWY 11/29 - ACFT ON OPPOSITE ENDS OF RWY MAY NOT BE ABLE TO SEE ONE ANOTHER.
- ACFT DEP TO WEST : SEE ERSa FOR OaKEY COM PROC.
- PJE OPS HJ.
- RWY 11/29 LENGTH INCLUDES RESA (LDA 1221M)

Changes: RWY 11/29.

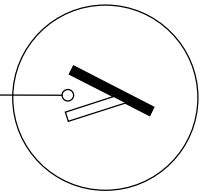
TWBAD01-130

8 MAR 2012

AWIS 127.05 386	FIA BN CEN 121.2	CTAF+AFRU 127.65	PAL 122.4		Bearings are Magnetic Elevations in FEET AMSL
--------------------	---------------------	---------------------	--------------	--	--



REFERENCE WAYPOINT TWB NDB



10 NM MSA 3700

AD ELEV 2086

SECTOR A

MISSED APPROACH:
TURN LEFT,
TRACK 090°.
CLIMB TO 4600FT.

NOTE:
MAX IAS IN TURN
160KT.

NM FM NDB	25	15	9	5	2	0														
CIRCLING MINIMA	A,B: 2960-2.4			C: 3060-4.0		D: N/A														
NM FM NDB	6.7	6	5	4	3	2	1.9	1.6												
ALT (3° APCH PATH)	4600	4370	4050	3740	3420	3100	3060	2960												

SECTOR B

MISSED APPROACH:
TURN RIGHT,
TRACK 090°.
CLIMB TO 4600FT.

NOTE:
MAX IAS IN TURN
160KT.

NM FM NDB	25	15	7	5	2	0														
CIRCLING MINIMA	A,B: 2960-2.4			C: 3060-4.0		D: N/A														
NM FM NDB	6.7	6	5	4	3	2	1.9	1.6												
ALT (3° APCH PATH)	4600	4370	4050	3740	3420	3100	3060	2960												

SGE TO TWB

MISSED APPROACH:
TRACK 068°.
CLIMB TO 3900FT.

NM FM NDB	25	15	7	5	0															
CIRCLING MINIMA	A,B: 2960-2.4			C: 3060-4.0		D: N/A														
NM FM NDB	5.6	5	4	3	2.7															
ALT (3° APCH PATH)	3900	3700	3380	3060	2960															

TWBDG01-130

GNSS ARRIVAL PROCEDURES TOOWOOMBA, QLD (YTWB) PAGE 2

8 MAR 2012

AWIS 127.05 386	FIA BN CEN 121.2	CTAF+AFRU 127.65	PAL 122.4		Bearings are Magnetic Elevations in FEET AMSL
--------------------	---------------------	---------------------	--------------	--	--

25 NM MSA

3900

TWB NDB

B-260°

4600

B-030°

REFERENCE WAYPOINT TWB NDB

TWB NDB 386

10 NM MSA 3700

AD ELEV 2086

<p>OK TO TWB</p> <p>121°</p> <p>TWB NDB</p>	<p>NDB</p> <p>3900</p> <p>3100</p> <p>3730</p> <p>3100</p> <p>MDA</p> <p>MAPt</p> <p>4600</p> <p>3°</p> <p>7 5 3 0</p>	<p>MISSED APPROACH:</p> <p>TRACK 121°.</p> <p>CLIMB TO 4600FT.</p>
NM FM NDB	OK	
CIRCLING MINIMA		A,B: 2960-2.4 C: 3060-4.0 D: N/A
NM FM NDB	5.5	5 4 3 2.9 2.6
ALT (3° APCH PATH)	3900	3730 3420 3100 3060 2960

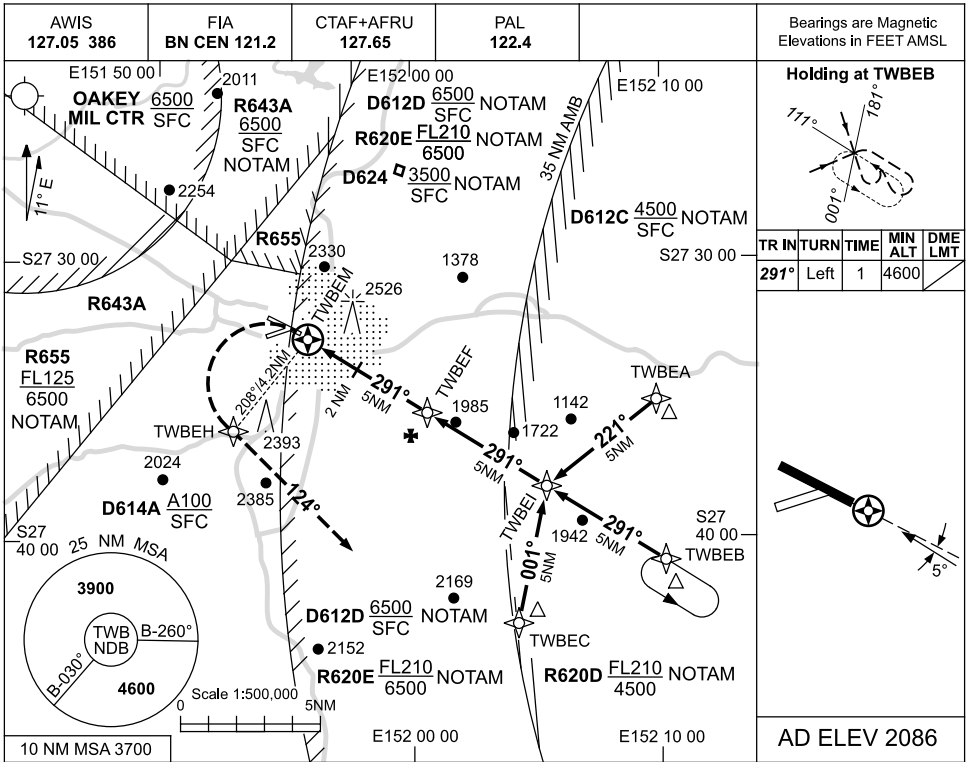
TWBDG02-130

USE QNH

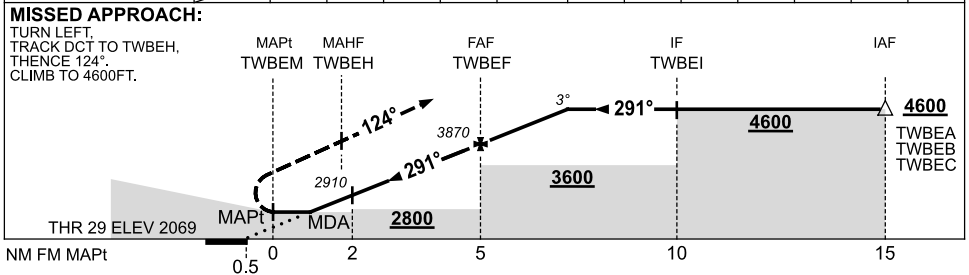
RNAV (GNSS) RWY 29

TOOWOOMBA, QLD (YTWB)

17 NOV 2011



NM TO NEXT WPT	TWBEM	1.3	2	3	4	TWBEF	1	2	2.3			
ALT (3° APCH PATH)		2700	2910	3230	3550	3870	4190	4500	4600			



NOTES

CATEGORY	A	B	C	D
S-I GNSS	2700 (631-3.6)			NOT APPLICABLE
CIRCLING	2960 (874-2.4)		3060 (974-4.0)	
ALTERNATE	(1374-4.4)		(1474-6.0)	

1. MAX IAS :
HOLDING : 210KT.
INITIAL : 210KT.
MAP TURN: 180KT.
2. INITIAL APPROACH AND MISSED APPROACH SEGMENTS WITHIN **R620D** AIRSPACE.

Changes: LOGO, D624.

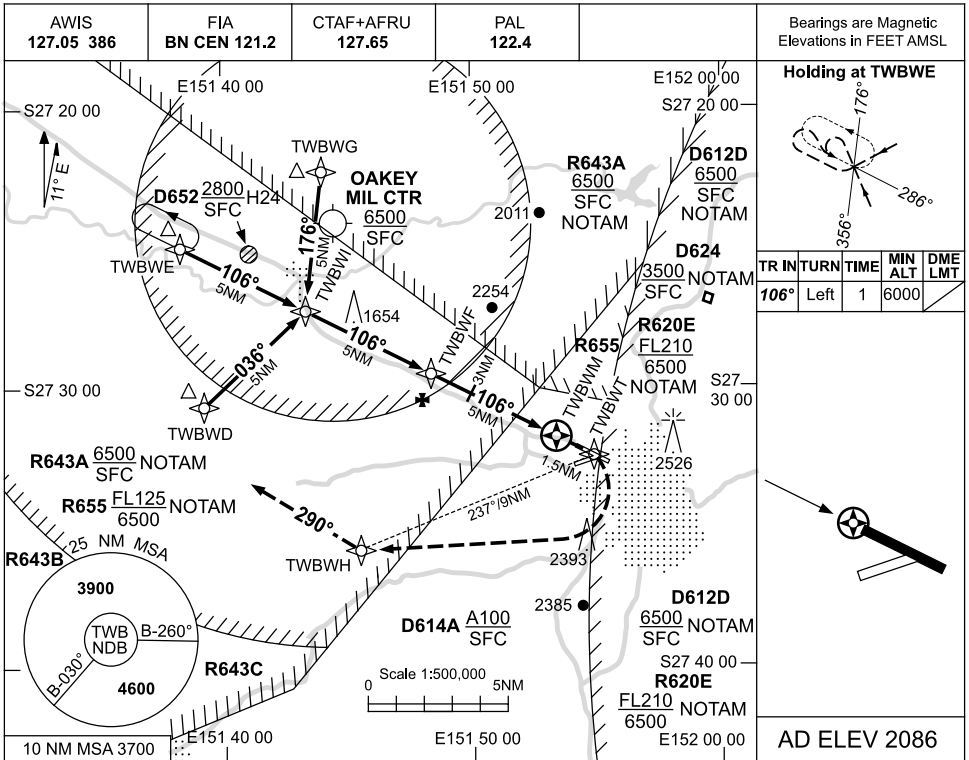
TWBG01-129

USE QNH

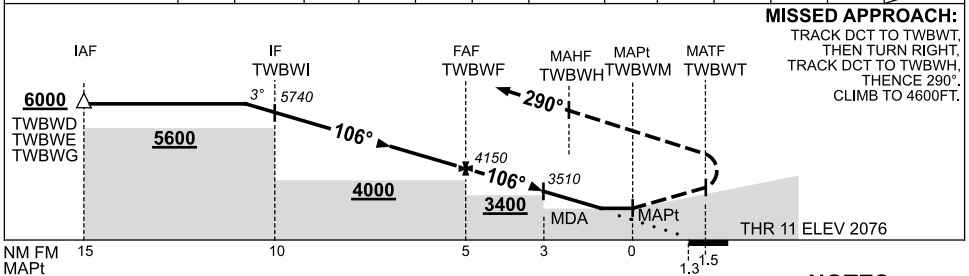
RNAV (GNSS) RWY 11

17 NOV 2011

TOOWOOMBA, QLD (YTWB)



NM TO NEXT WPT	0.9	TWBWI	4	3	2	1	TWBWF	4	3	2	1	0.3	TWBWM
ALT (3° APCH PATH)	6000	5740	5420	5100	4790	4470	4150	3830	3510	3190	2880	2640	



NOTES

1. MAX IAS:
INITIAL : 210KT.
2. PROC INFRINGES YBOK
CTR & R AREAS WHEN
ACT. ACFT MUST OBTAIN
CLEARANCE BEFORE
COMMENCING PROC.
3. PROC OVERLAYS YBOK
RNAV (GNSS) RWY 14.

CATEGORY	A	B	C	D
S-I GNSS	2640 (564-3.2)			NOT APPLICABLE
CIRCLING	2960 (874-2.4)	3060 (974-4.0)		
ALTERNATE	(1374-4.4)	(1474-6.0)		

Changes: LOGO, D624.

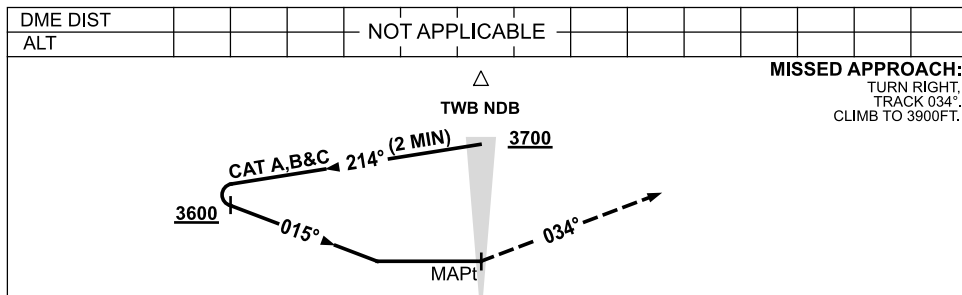
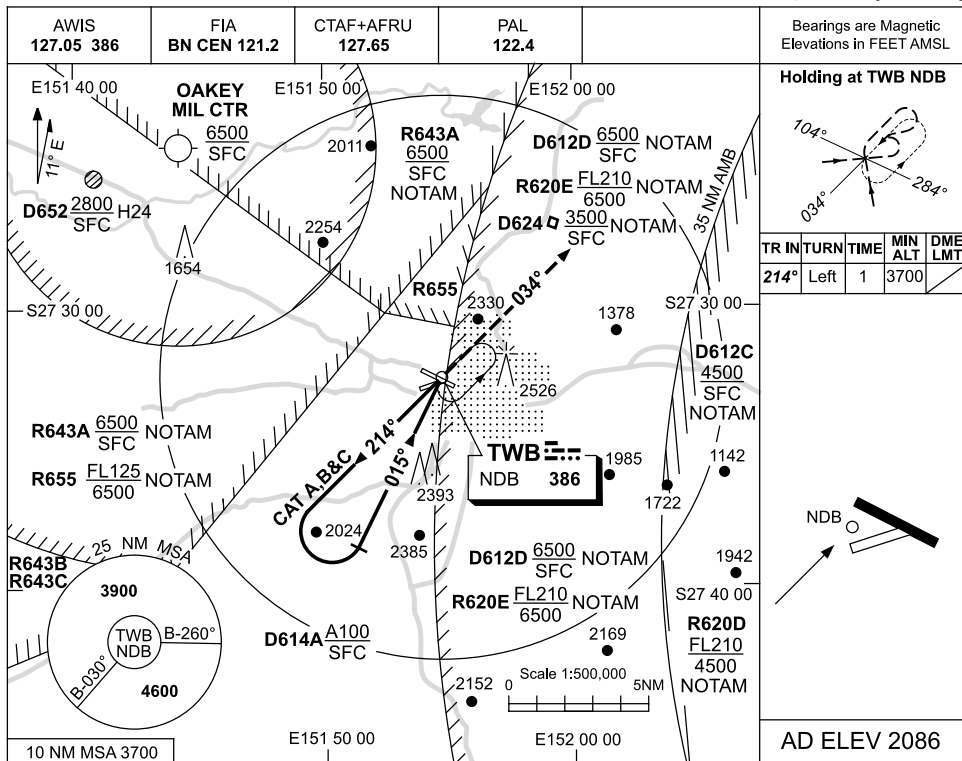
TWBGN02-129

USE QNH

NDB-A

TOOWOOMBA, QLD (YTWB)

17 NOV 2011



NOTES

CATEGORY	A	B	C	D
CIRCLING	2960 (874-2.4)		3060 (974-4.0)	NOT APPLICABLE
ALTERNATE	(1374-4.4)		(1474-6.0)	

- MAX IAS :
HOLDING: 180KT.
INITIAL : 160KT.

Changes: LOGO, D624.

TWBNB01-129