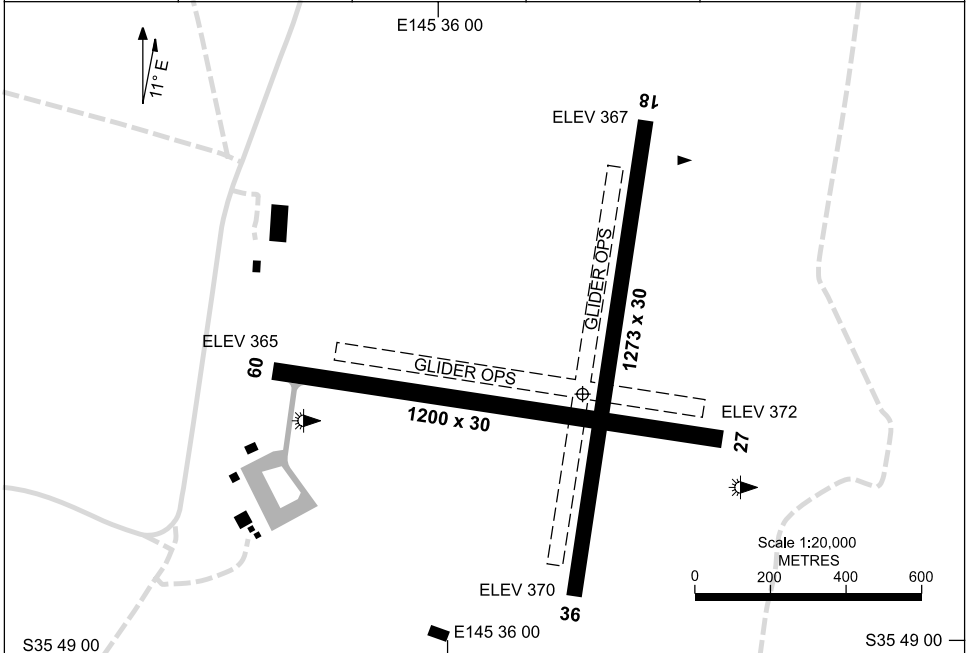


2 JUN 2011

AD ELEV 372
S35 48 39 E145 36 15

**AERODROME CHART
TOCUMWAL, NSW (YTOC)**

FIA ML CEN 118.6	CTAF 122.9	AFRU+PAL 122.9		Bearings are Magnetic Elevations in FEET AMSL
---------------------	---------------	-------------------	--	--



RWY		AERODROME LIGHTING
		TAXIWAYS : SIDELINE BLUE RL : AFRU+PAL 122.9
09 ⁰⁸⁷	LIRL	
²⁶⁷ 27	LIRL	
18 ¹⁷⁷	NIL	
³⁵⁷ 36	NIL	

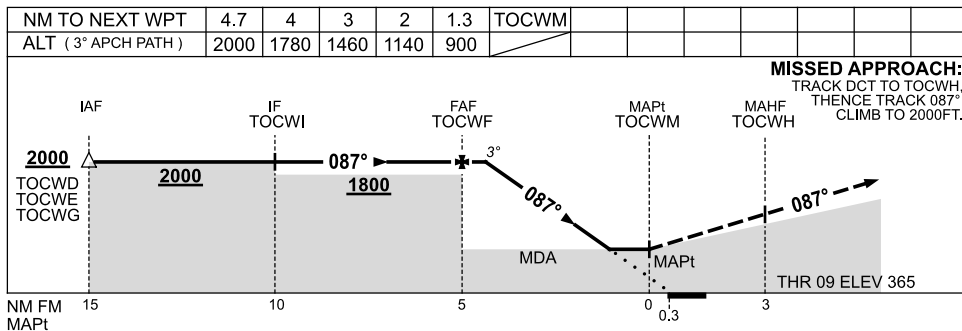
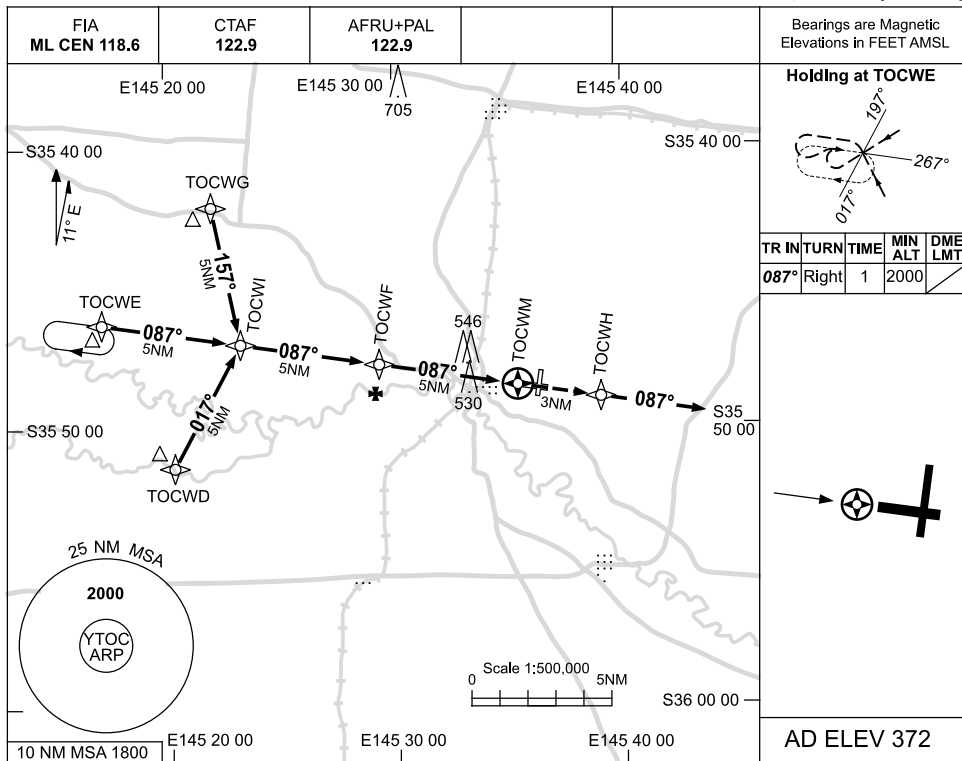
NOTES
GLIDING OPS HJ. SEE ERSA

USE QNH

RNAV_(GNSS)RWY 09

25 AUG 2011

TOCUMWAL, NSW (YTOC)



NOTES

CATEGORY	A	B	C	D
S-I GNSS	900 (528-3.0)			NOT APPLICABLE
CIRCLING	990 (618-2.4)		1090 (718-4.0)	
ALTERNATE	(1118-4.4)		(1218-6.0)	

- MAX IAS:
INITIAL : 210KT.

Changes: 10NM MSA, CIRCLING ALT, ALTERNATE ALT, SEGMENT ALT.

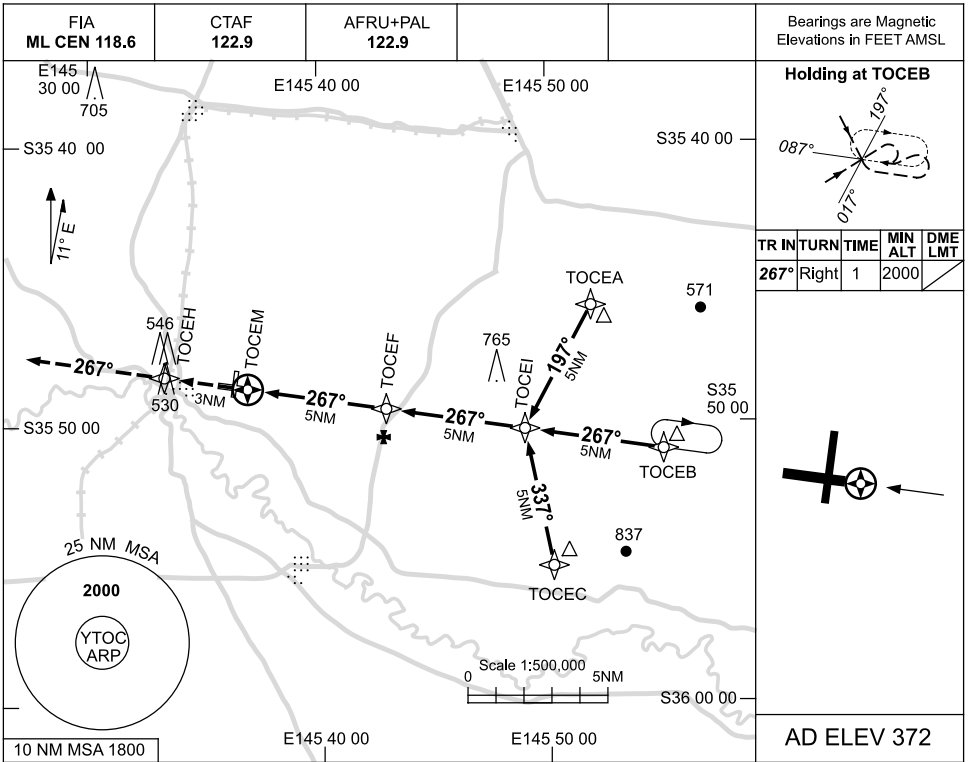
TOCGN01-128



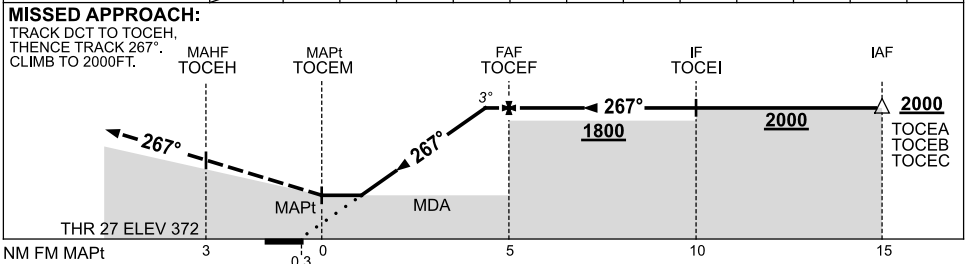
USE QNH

RNAV (GNSS) RWY 27
TOCUMWAL, NSW (YTOC)

25 AUG 2011



NM TO NEXT WPT	TOCEM	1.4	2	3	4	4.7				
ALT (3° APCH PATH)		940	1140	1460	1780	2000				



NOTES

CATEGORY	A	B	C	D
S-I GNSS	940 (568-3.2)			NOT APPLICABLE
CIRCLING	990 (618-2.4)	1090 (718-4.0)		
ALTERNATE	(1118-4.4)		(1218-6.0)	

1. MAX IAS:
 INITIAL : 210KT.

Changes: CIRCLING ALT, ALTERNATE ALT, 765FT TWR, 10NM MSA, MDA, DIST ALT TABLE.

TOCGN02-128