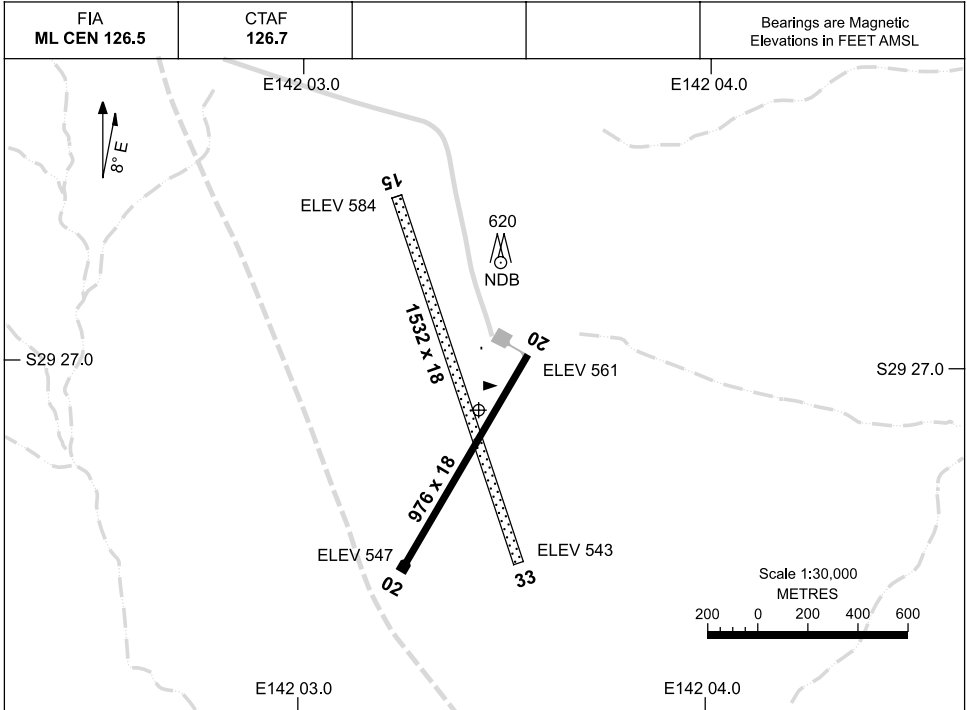


19 NOV 2009

AD ELEV 584
S29 27.1 E142 03.5

AERODROME CHART
TIBOOBURRA, NSW (YTIB)



	AERODROME LIGHTING	
RWY	RL : PTBL , PN EMERG ONLY	
02 <small>022</small> <small>202</small> 20	PTBL	
15 <small>153</small> <small>333</small> 33	NIL	

NOTES

1. BEWARE OF UNSERVICABLE STRIPS LOCATED 1NM NW AND SE OF TOWN.
2. AWIS (PHONE) 08 8091 3439

Changes: AWIS PHONE NO.

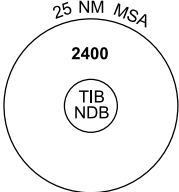
TIBAD01-121

GPS ARRIVAL PROCEDURES TIBOOBURRA, NSW (YTIB)

19 NOV 2009

Bearings are Magnetic
Elevations in FEET AMSL

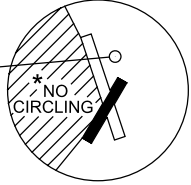
FIA ML CEN 126.5	CTAF 126.7				
---------------------	---------------	--	--	--	--



25 NM MSA
2400
TIB NDB

GPS REFERENCE WAYPOINT TIB NDB
AWIS (PHONE) 08 8091 3439

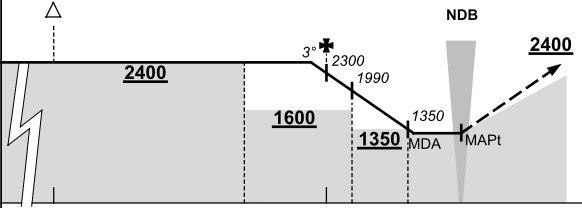
TIB ...
NDB 200



* NO CIRCLING WEST
OF RWY 02 AND 15.

10 NM MSA 2200

AD ELEV 584

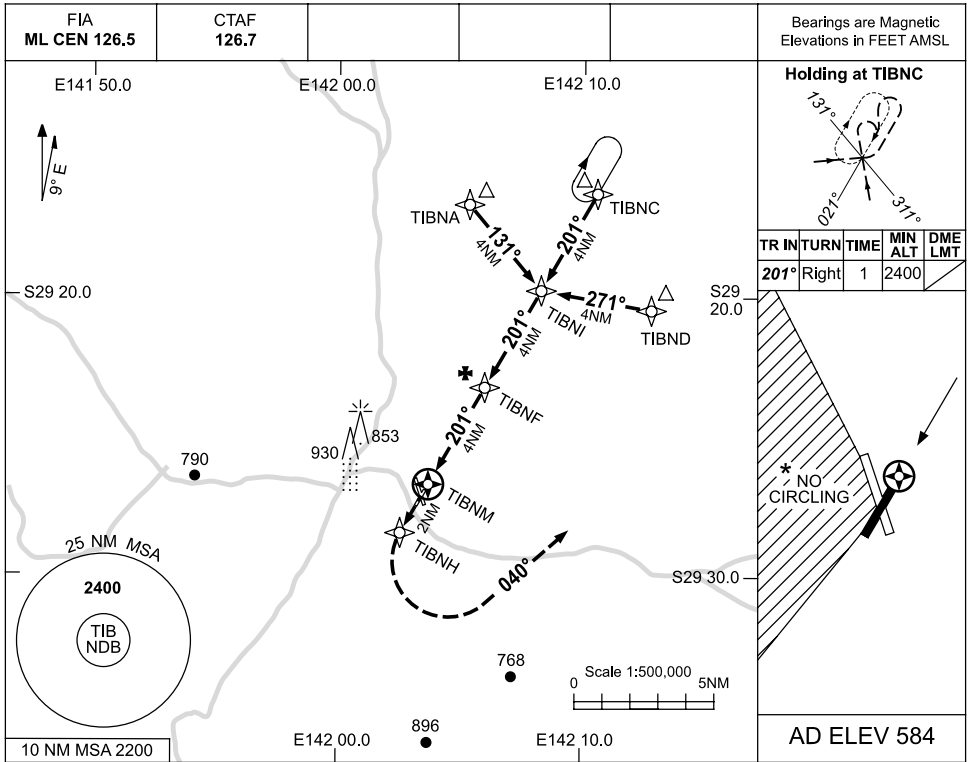
ALL TRACKS TO TIB NDB	△							<p>MISSED APPROACH: CLIMB ON TRACK TO 2400FT.</p>
	NM FM NDB	25	15	8	5	4	2	0
CIRCLING MINIMA			A,B: 1330-2.4		C: 1350-4.0		D: N/A	
NM FM NDB	5.3	5	4	3	2	1.9		
ALT (3° APCH PATH)	2400	2300	1990	1670	1350	1330		

TIBDG01-121

USE QNH

RNAV (GNSS) RWY 20
TIBOOBURRA, NSW (YTIB)

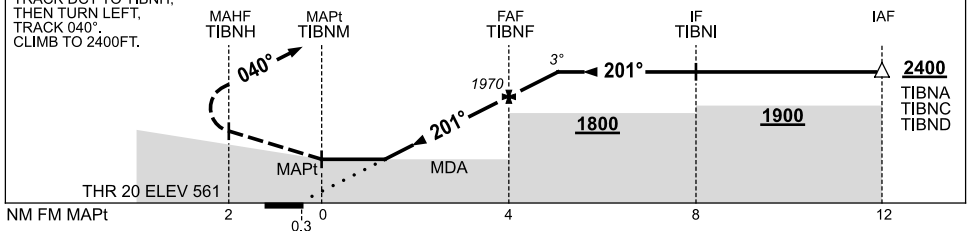
19 NOV 2009



NM TO NEXT WPT	TIBNM	1.4	2	3	TIBNF	1	1.3						
ALT (3° APCH PATH)		1140	1330	1650	1970	2290	2400						

MISSED APPROACH:

TRACK DCT TO TIBNH,
 THEN TURN LEFT,
 TRACK 040°.
 CLIMB TO 2400FT.



NOTES

CATEGORY	A	B	C	D
S-I GNSS	1140 (579-3.3)			NOT APPLICABLE
CIRCLING *	1250 (666-2.4)		1350 (766-4.0)	
ALTERNATE	(1166-4.4)		(1266-6.0)	

1. MAX IAS:
INITIAL : 210KT.
- * 2. NO CIRCLING WEST OF RWY 02 AND 15.
3. AWIS (PHONE)
08 8091 3439

Changes: AWIS PHONE NO.

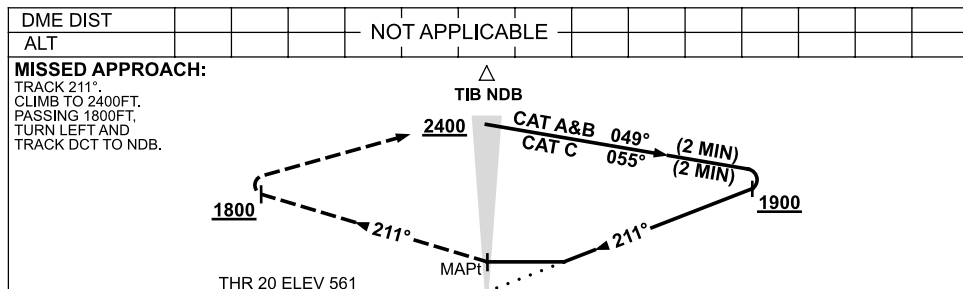
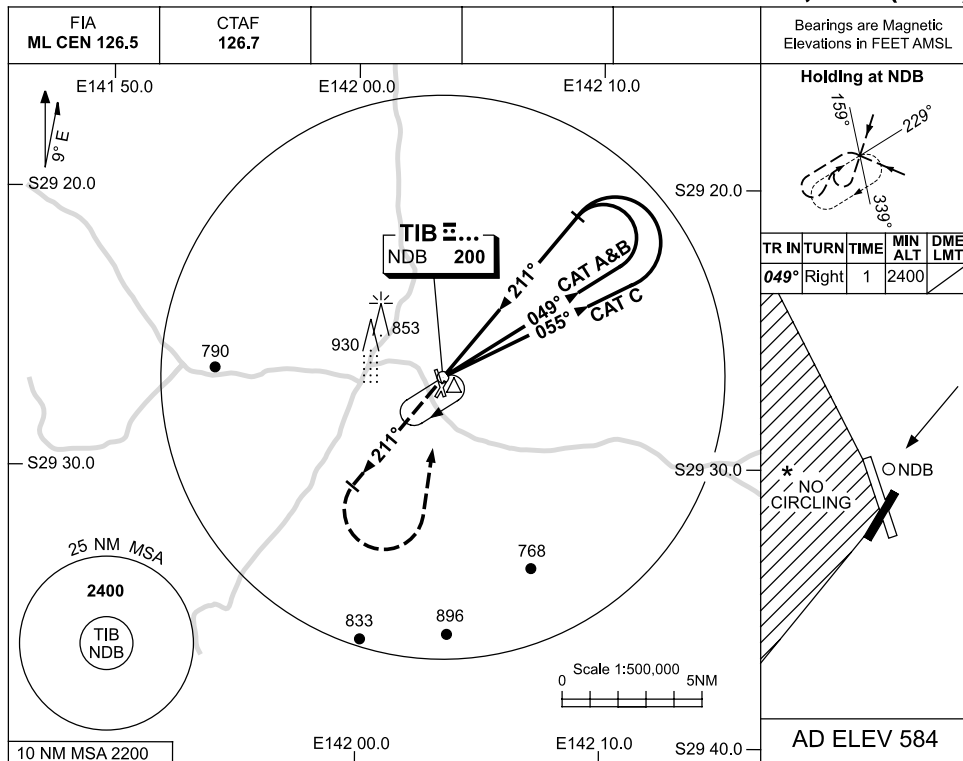
TIBGN01-121

USE QNH

NDB RWY 20

19 NOV 2009

TIBOOBURRA, NSW (YTIB)



NOTES

CATEGORY	A	B	C	D
S-I NDB	1250 (689-3.9)			NOT APPLICABLE
CIRCLING *	1250 (666-2.4)	1350 (766-4.0)		
ALTERNATE	(1166-4.4)		(1266-6.0)	

1. MAX IAS: INITIAL : 210KT.
- * 2. NO CIRCLING WEST OF RWY 02 AND 15.
3. AWIS (PHONE) 08 8091 3439

Changes: AWIS PHONE NO, Editorial.

TIBNB01-121