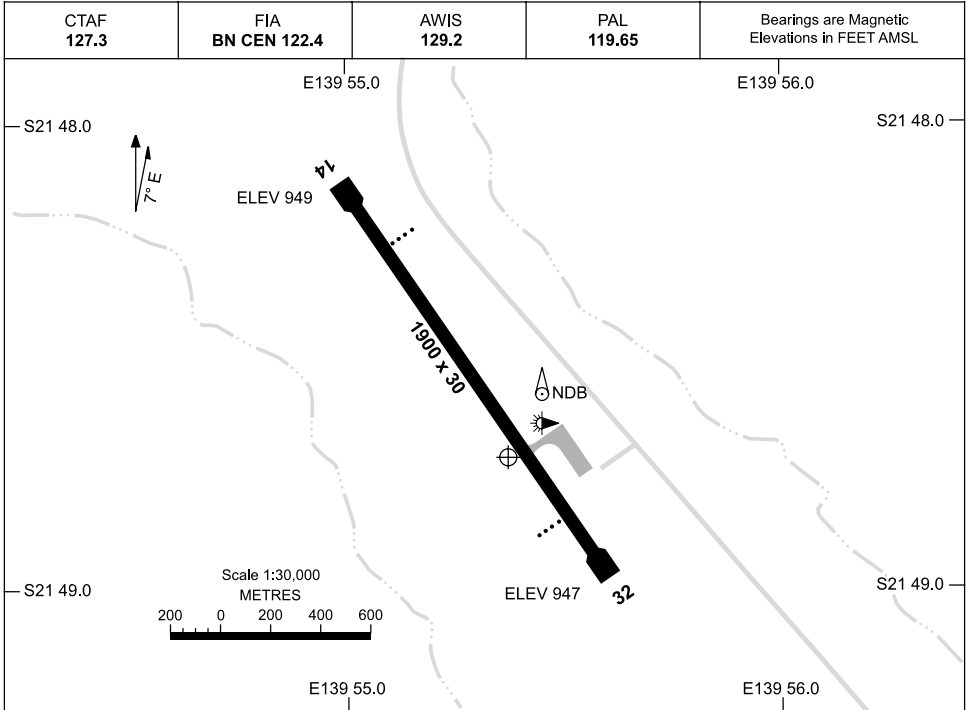


12 MAR 2009

AD ELEV 949
S21 48.7 E139 55.4

AERODROME CHART
THE MONUMENT, QLD (YTMO)



	AERODROME LIGHTING
RWY	TAXIWAY : SIDELINE BLUE RL : PAL 119.65 ; PTBL PN ; SDBY 15MIN PN
14 ¹⁴⁰ 320 32	PAPI 3.0° 49FT LIRL PAPI 3.0° 49FT

NOTES

Changes: RWY BRG, Editorial.

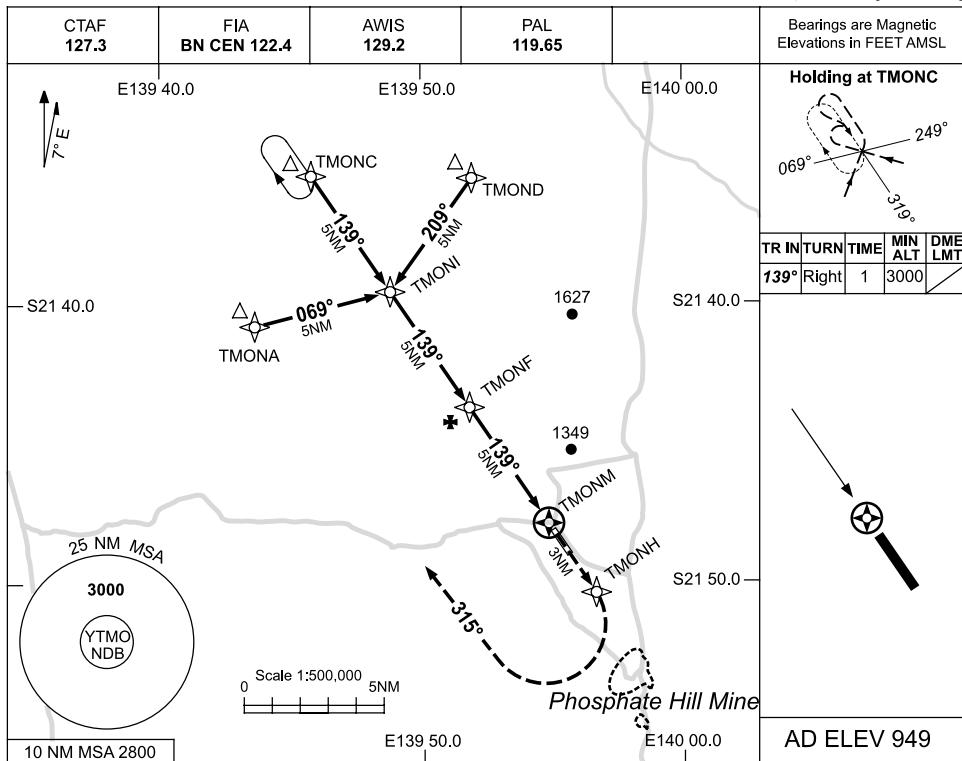
TMOAD01-118

USE QNH

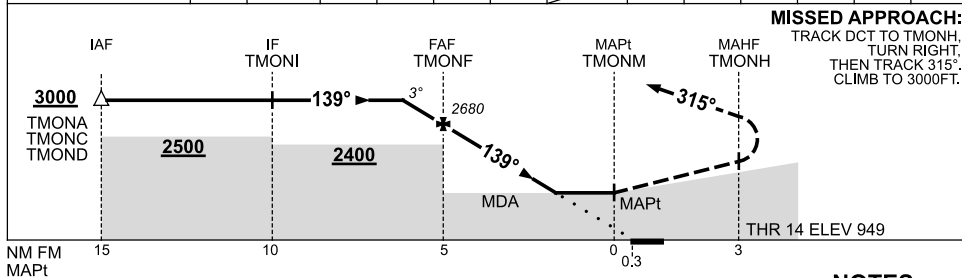
RNAV_(GNSS)RWY 14

12 MAR 2009

THE MONUMENT, QLD (YTMO)



NM TO NEXT WPT	1	TMONF	4	3	2.4	1.6	TMONM				
ALT (3° APCH PATH)	3000	2680	2360	2040	1840	1600					



NOTES

CATEGORY	A	B	C	D
S-I GNSS	1600 (651-3.7)			NOT APPLICABLE
CIRCLING	1840 (891-2.4)		2010 (1061-4.0)	
ALTERNATE	(1391-4.4)		(1561-6.0)	

1. MAX IAS:
INITIAL : 210KT.

Changes: PROC NAME, Editorial.

TMOGN01-118

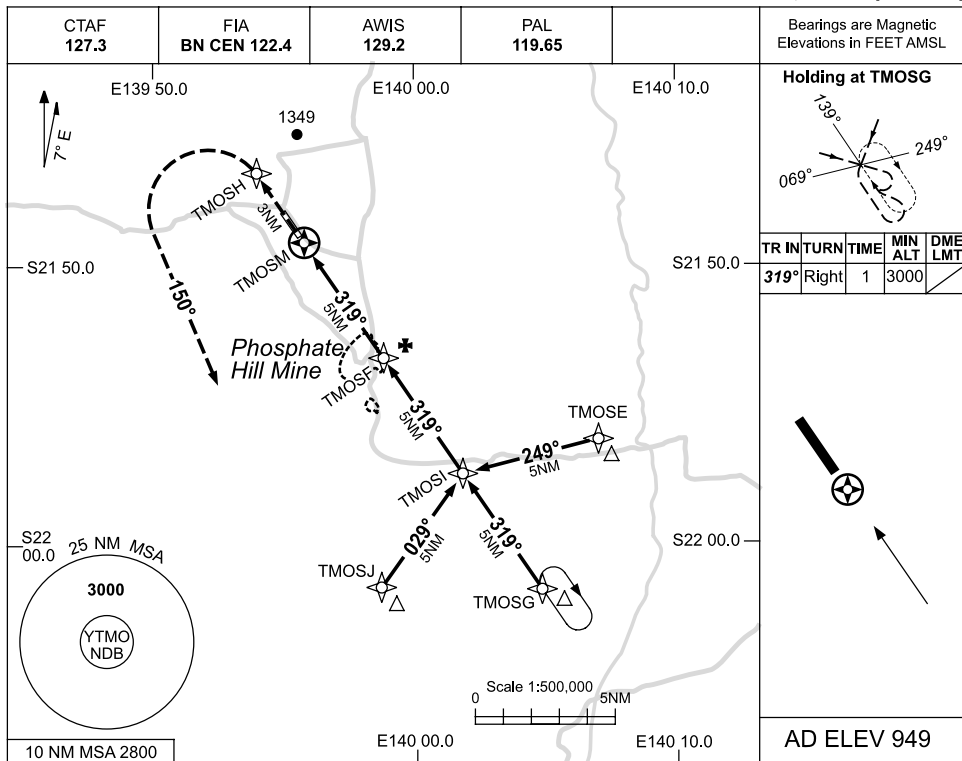


USE QNH

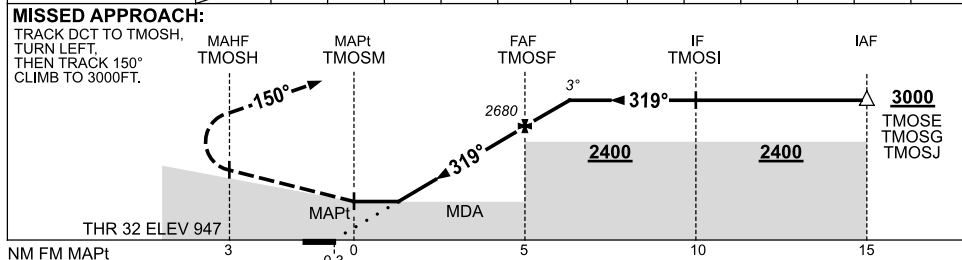
RNAV_(GNSS)RWY 32

THE MONUMENT, QLD (YTMO)

12 MAR 2009



NM TO NEXT WPT	TMOSM	1.2	2.4	3	4	TMOSF	1				
ALT (3° APCH PATH)		1470	1840	2040	2360	2680	3000				



NOTES

CATEGORY	A	B	C	D
S-I GNSS	1470 (521-2.9)			NOT APPLICABLE
CIRCLING	1840 (891-2.4)		2010 (1061-4.0)	
ALTERNATE	(1391-4.4)		(1561-6.0)	

1. MAX IAS: INITIAL : 210KT.

Changes: PROC NAME, Editorial.

TMOGN02-118

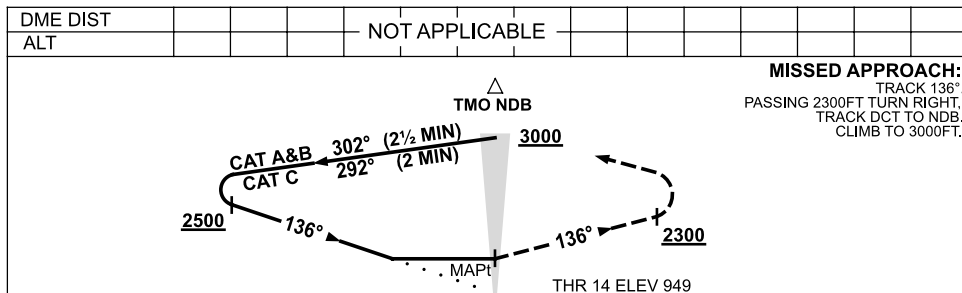
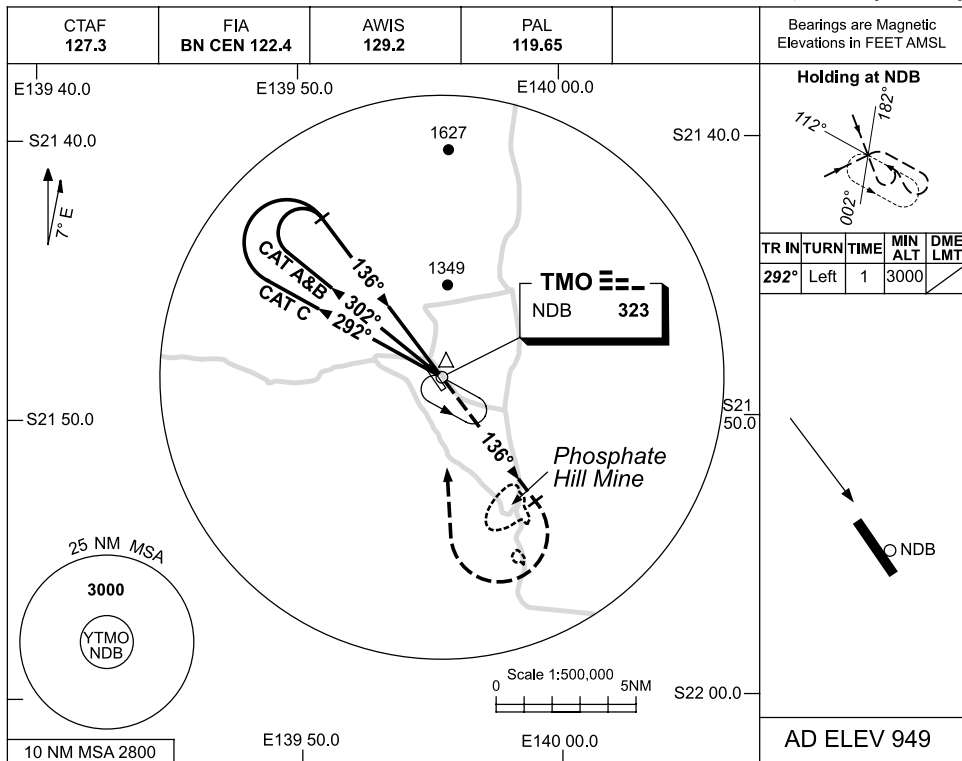


USE QNH

NDB RWY 14

12 MAR 2009

THE MONUMENT, QLD (YTMO)



NOTES

CATEGORY	A	B	C	D
S-I NDB	1840 (891-5.0)			NOT APPLICABLE
CIRCLING	1840 (891-2.4)	2010 (1061-4.0)		
ALTERNATE	(1391-4.4)	(1561-6.0)		

1. MAX IAS:
INITIAL : 210KT.

Changes: PROC NAME, Editorial.

TMONB01-118