

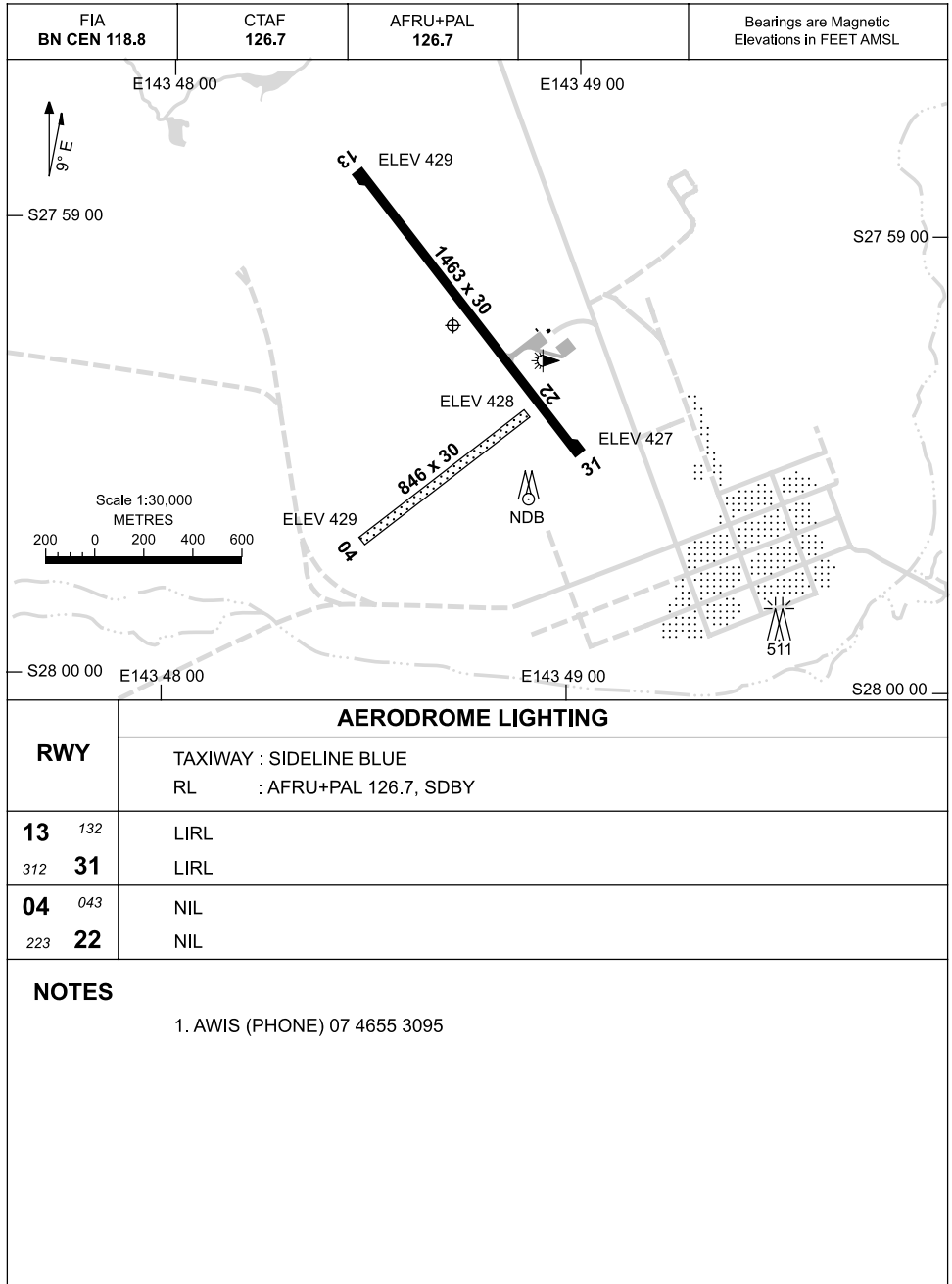
AD ELEV 433

AERODROME CHART

2 JUN 2011

S27 59 11 E143 48 39

THARGOMINDAH, QLD (YTGM)



AERODROME LIGHTING

RWY

TAXIWAY : SIDELINE BLUE
RL : AFRU+PAL 126.7, SDBY

13	132	LIRL
312	31	LIRL

04	043	NIL
223	22	NIL

NOTES

1. AWIS (PHONE) 07 4655 3095

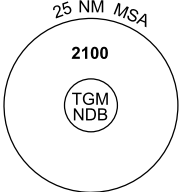
Changes: FIA FREQ.

TGMAD01-127

11 MAR 2010

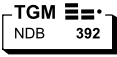
**GPS ARRIVAL PROCEDURES
THARGOMINDAH, QLD (YTGM)**

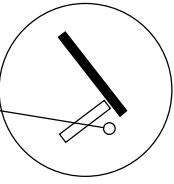
FIA BN CEN 118.8	CTAF 126.7	AFRU+PAL 126.7			Bearings are Magnetic Elevations in FEET AMSL
---------------------	---------------	-------------------	--	--	--



25 NM MSA
2100
TGM NDB

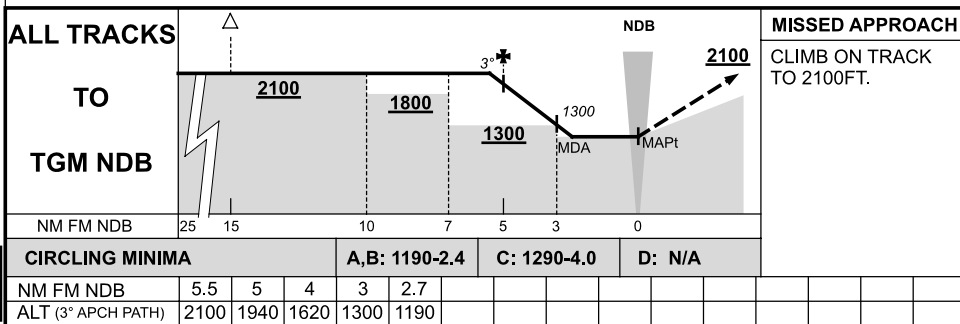
GPS REFERENCE WAYPOINT TGM NDB
AWIS (PHONE) 07 4655 3095





AD ELEV 433

10 NM MSA 1800



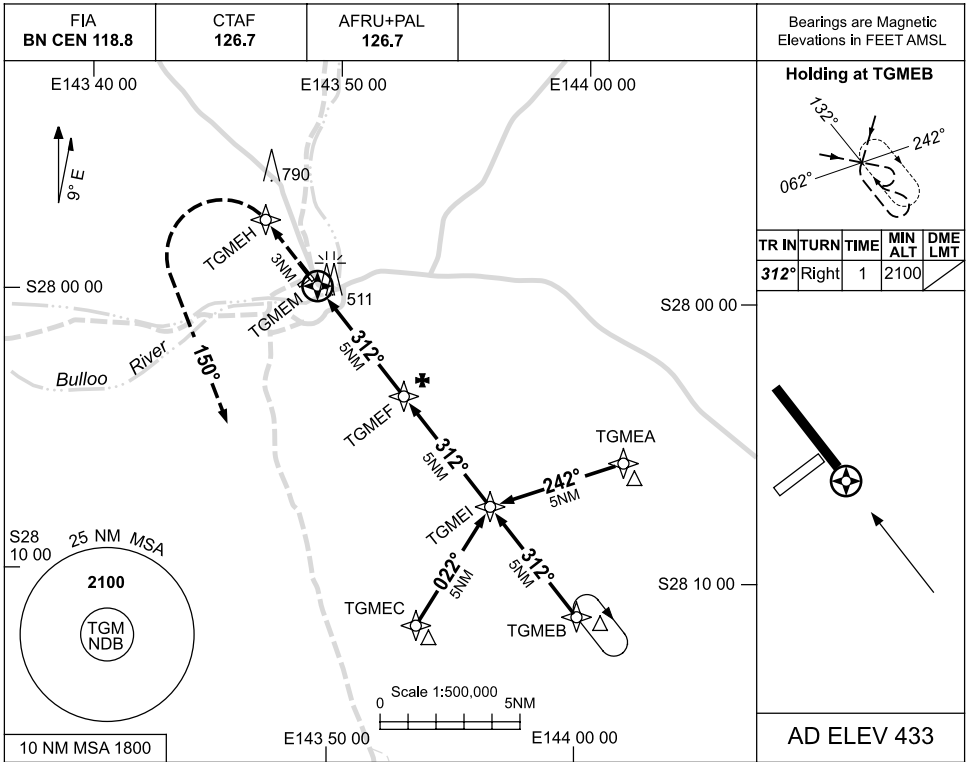
TGMDG01-122

USE QNH

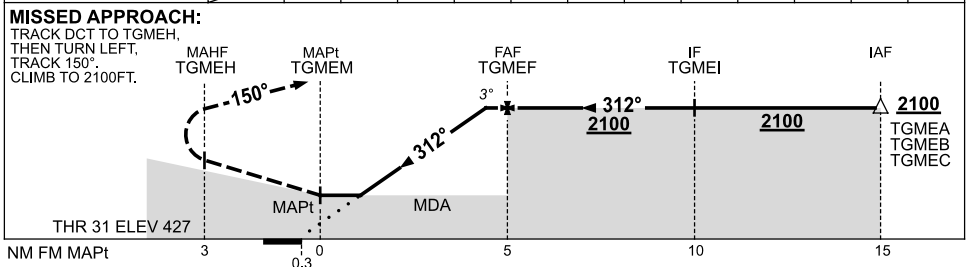
RNAV_(GNSS)RWY 31

11 MAR 2010

THARGOMINDAH, QLD (YTGM)



NM TO NEXT WPT	TGMEM	1.5	2	3	4	4.8			
ALT (3° APCH PATH)		1040	1200	1520	1840	2100			



NOTES

1. MAX IAS: INITIAL : 210KT.
2. AWIS (PHONE) 07 4655 3095

CATEGORY	A	B	C	D
S-I GNSS	1040 (607-3.4)			NOT APPLICABLE
CIRCLING	1060 (627-2.4)		1290 (857-4.0)	
ALTERNATE	(1127-4.4)		(1357-6.0)	

Changes: 790FT TWR, CO-ORDS FORMAT, CIRCLING MNM, ALTERNATE MNM.

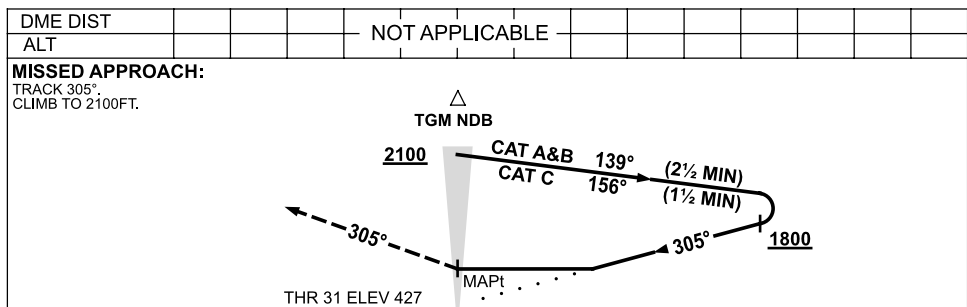
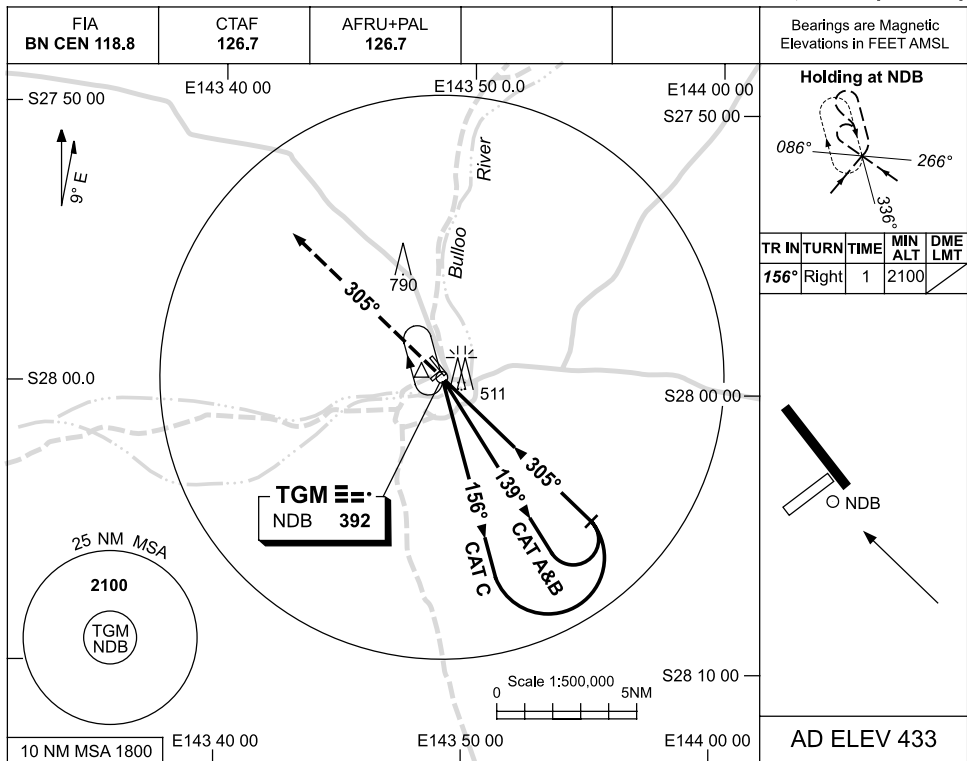
TGMGN01-122

USE QNH

NDB RWY 31

11 MAR 2010

THARGOMINDAH, QLD (YTGM)



NOTES

CATEGORY	A	B	C	D
S-I NDB	1060 (627-3.5)			NOT APPLICABLE
CIRCLING	1060 (627-2.4)	1290 (857-4.0)		
ALTERNATE	(1127-4.4)		(1357-6.0)	

1. MAX IAS:
INITIAL :
CAT A&B 140KT.
CAT C 210KT.
2. AWIS (PHONE)
07 4655 3095

Changes: 790FT TWR, CO-ORDS FORMAT, CIRCLING MNM, ALTERNATE MNM.

TGMNB01-122