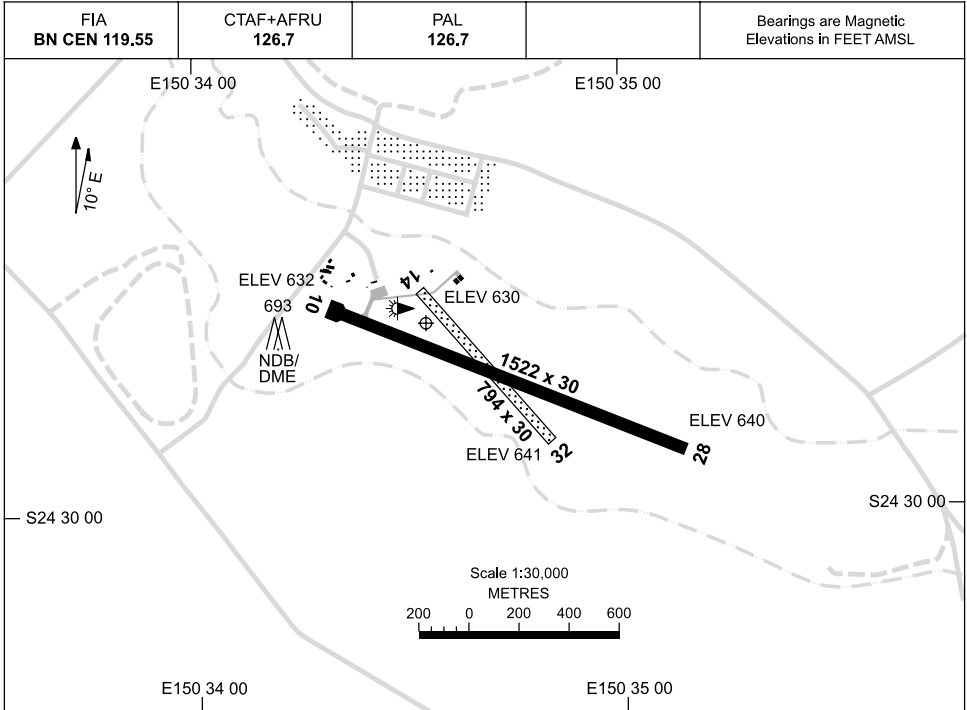


18 NOV 2010

AD ELEV 644
S24 29 38 E150 34 34

AERODROME CHART
THANGOOL, QLD (YTNG)



	AERODROME LIGHTING	
RWY	TAXIWAY : SIDELINE BLUE	
	RL : AFRU+PAL 126.7 , SDBY , PTBL PN	
10 ¹⁰²	LIRL	
282 28	LIRL	
14 ¹³⁰	NIL	
310 32	NIL	

NOTES

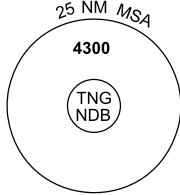
Changes: RWY LGT.

TNGAD01-125

DME or GPS ARRIVAL PROCEDURES THANGOOL, QLD (YTNG)

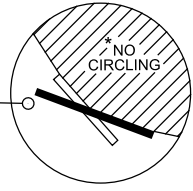
26 AUG 2010

FIA BN CEN 119.55	CTAF+AFRU 126.7	PAL 126.7			Bearings are Magnetic Elevations in FEET AMSL
----------------------	--------------------	--------------	--	--	--



**DME USING TNG DME
GPS REFERENCE WAYPOINT TNG NDB**

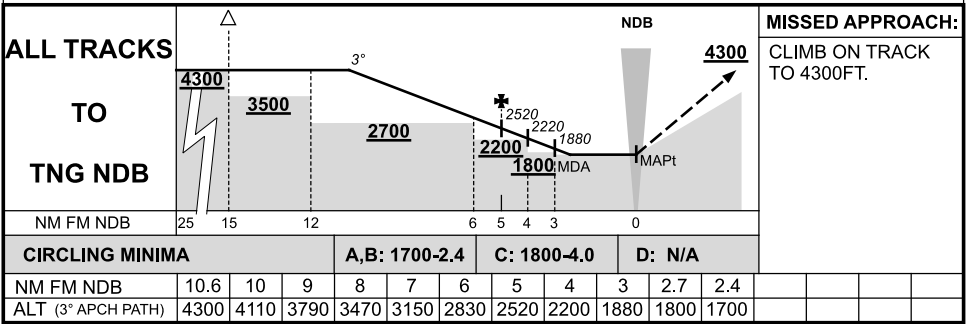
TNG	DME	446
	NDB	113.8



* NO CIRCLING IN
SECTOR NORTH OF
RWYS 14/32 & 10/28.

10 NM MSA 3200

AD ELEV 644

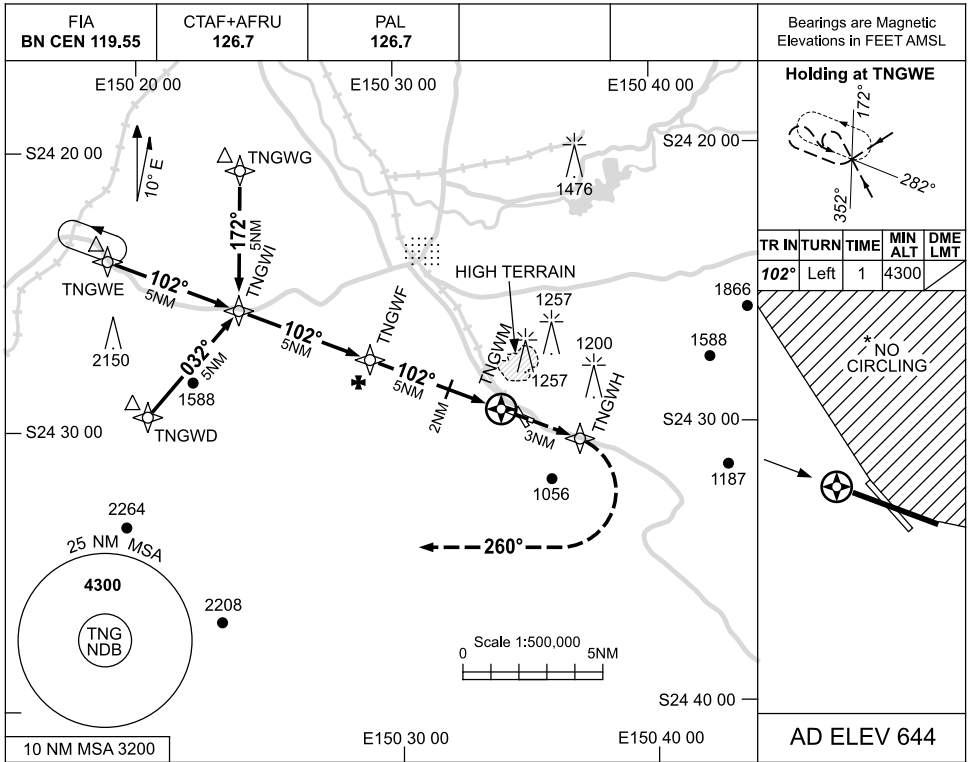


TNGDG01-124

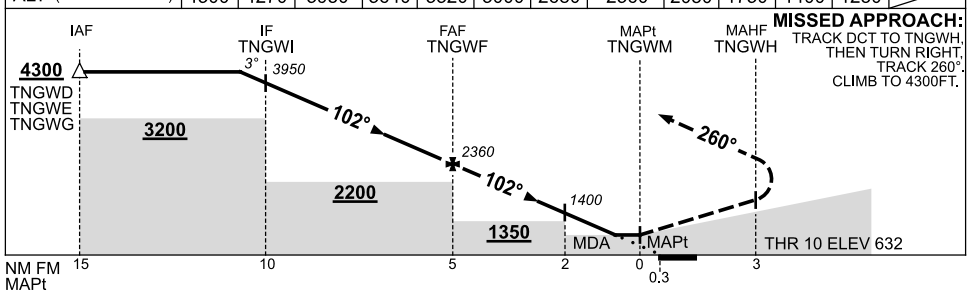
USE QNH

RNAV_(GNSS) RWY 10
THANGOOL, QLD (YTNG)

26 AUG 2010



NM TO NEXT WPT	1.1	1	TNGWI	4	3	2	1	TNGWF	4	3	2	1.5	TNGWM
ALT (3° APCH PATH)	4300	4270	3950	3640	3320	3000	2680	2360	2050	1730	1400	1250	



NOTES

CATEGORY	A	B	C	D
S-I GNSS	1250 (618-3.5)			NOT APPLICABLE
CIRCLING*	1700 (1056-2.4)		1800 (1156-4.0)	
ALTERNATE	(1556-4.4)		(1656-6.0)	

1. MAX IAS:
INITIAL : 210KT.
- *2. NO CIRCLING IN
SECTOR NORTH OF
RWYS 14/32 & 10/28.

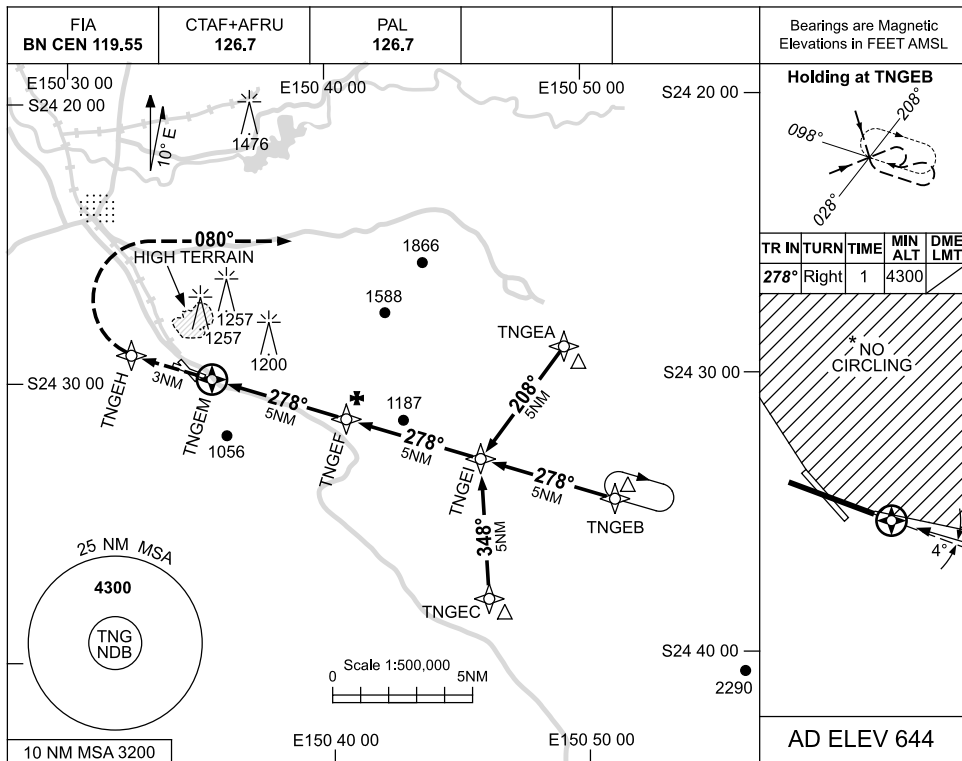
Changes: AFRU, PAL FREQ, CO-ORD FORMAT.

TNGGN01-124

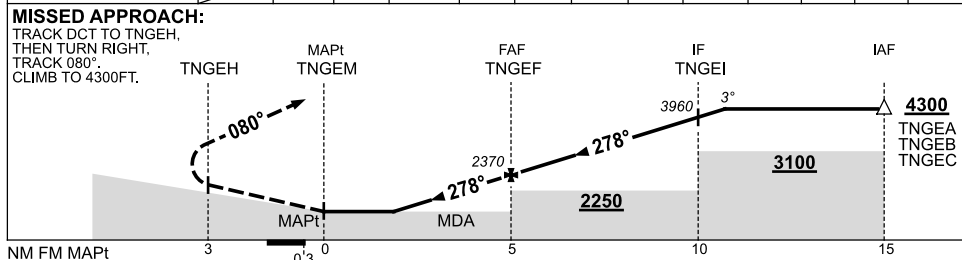
USE QNH

RNAV-E (GNSS)
THANGOOL, QLD (YTNG)

26 AUG 2010



NM TO NEXT WPT	TNGEM	2.9	4	TNGEF	1	2	3	4	TNGEI	1	1.1		
ALT (3° APCH PATH)		1700	2050	2370	2690	3000	3320	3640	3960	4280	4300		



NOTES

CATEGORY	A	B	C	D
CIRCLING *	1700 (1056-2.4)	1800 (1156-4.0)		NOT APPLICABLE
ALTERNATE	(1556-4.4)	(1656-6.0)		

1. MAX IAS: INITIAL : 210KT.
- * 2. NO CIRCLING IN SECTOR NORTH OF RWYS 14/32 & 10/28.

Changes: AFRU, PAL FREQ, CO-ORD FORMAT.

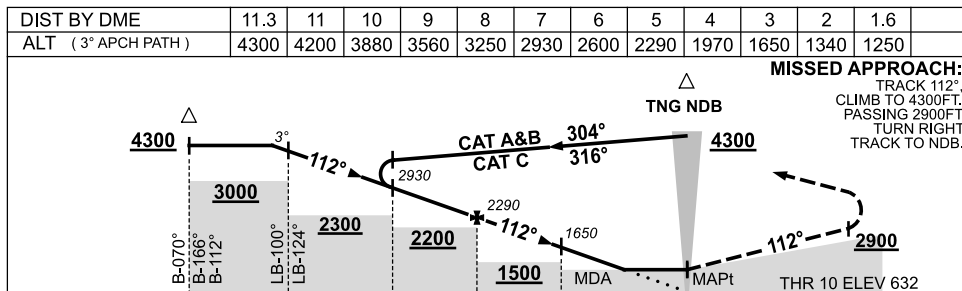
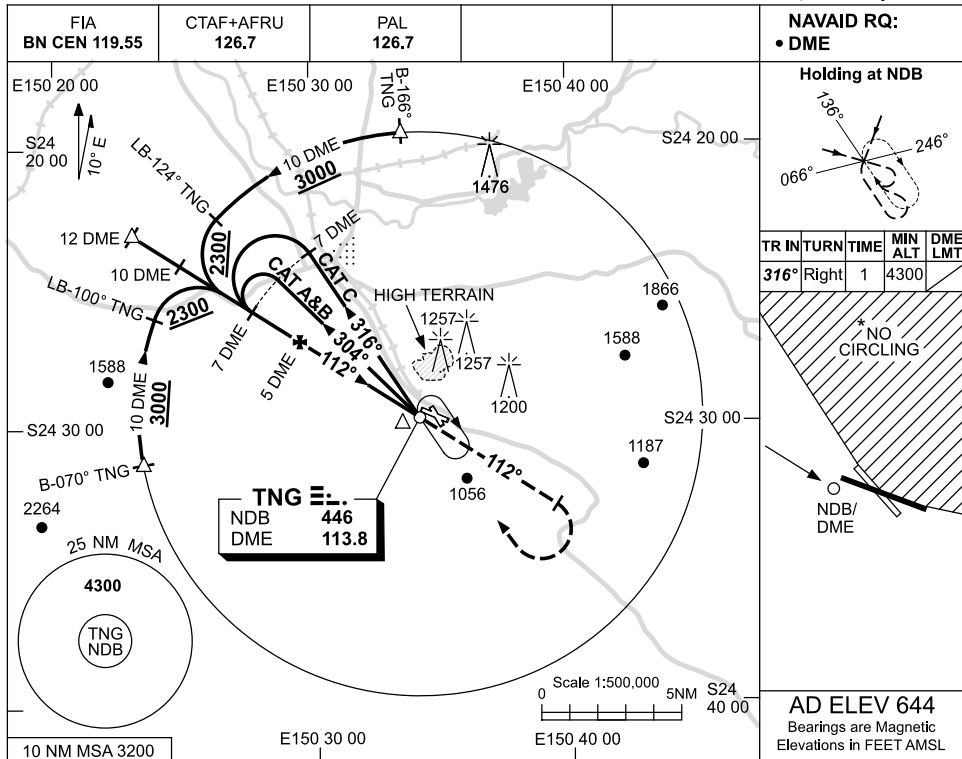
TNGGN02-124

USE QNH

NDB-Y RWY 10

26 AUG 2010

THANGOOL, QLD (YTNG)



CATEGORY	A	B	C	D
S-I NDB/DME	1250 (618-3.5)			NOT APPLICABLE
CIRCLING *	1700 (1056-2.4)		1800 (1156-4.0)	
ALTERNATE	(1556-4.4)		(1656-6.0)	

NOTES

- MAX IAS: INITIAL : 210KT.
- NO CIRCLING IN SECTOR NORTH OF RWYS 14/32 & 10/28.

Changes: TOPO, PROC ALT, AFRU, PAL FREQ, CO-ORD FORMAT.

TNGNB02-124