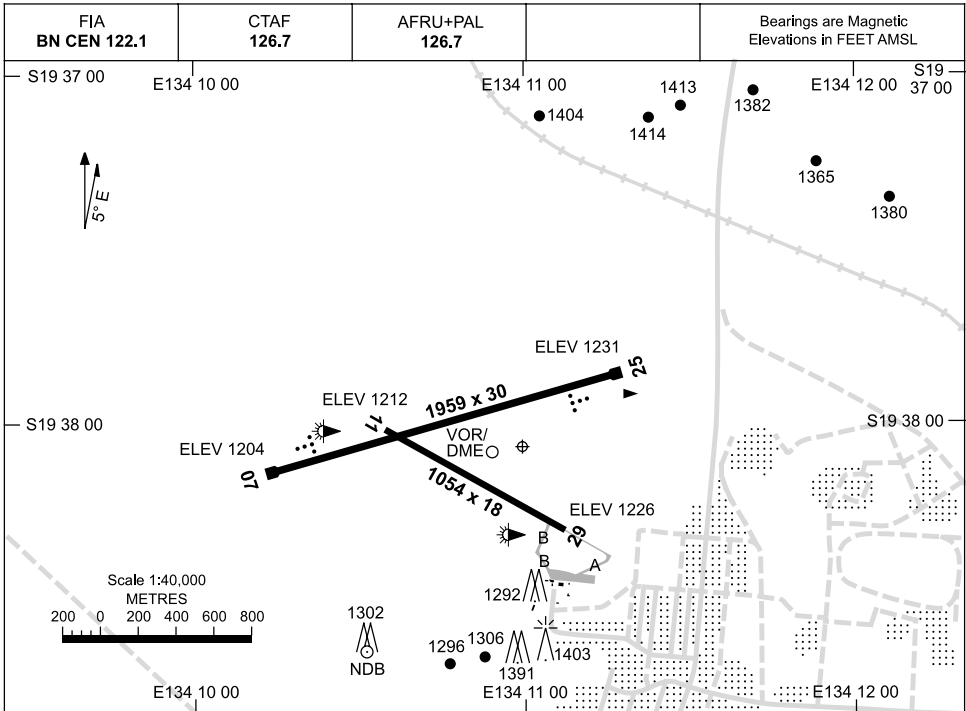


2 JUN 2011

AD ELEV 1236  
S19 38 04 E134 11 00

AERODROME CHART  
**TENNANT CREEK, NT (YTNK)**



RWY		AERODROME LIGHTING	
		TAXIWAY	RL
<b>07</b>	<i>069</i>	AT-VASIS LEFT SIDE 3.0° 49FT	LIRL
<i>249</i>	<b>25</b>	AT-VASIS LEFT SIDE 3.0° 45FT	LIRL
<b>11</b>	<i>115</i>		LIRL
<i>295</i>	<b>29</b>		LIRL

**NOTES**

1. TWY A AND EAST PORTION OF APRON NOT AVBL FOR ACFT ABV 5700KG MTOW.
2. ACFT ABV 15000KG MTOW MUST TURN AT RWY END ONLY.

Changes: NDB HEIGHT.

TNKAD01-127

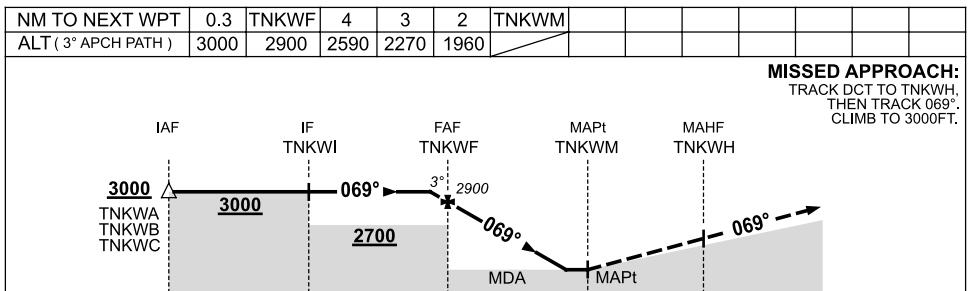
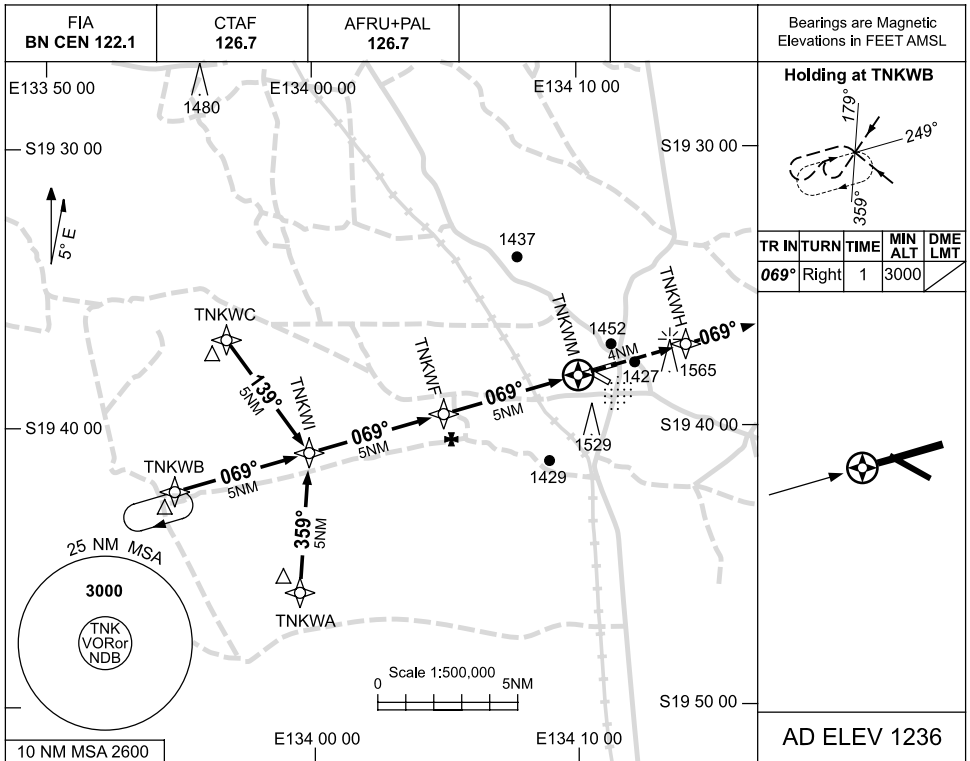


USE QNH

RNAV-W (GNSS)

18 NOV 2010

TENNANT CREEK, NT (YTNK)



NOTES

CATEGORY	A	B	C	D
				NOT APPLICABLE
CIRCLING	1960 (724-2.4)		2060 (824-4.0)	
ALTERNATE	(1224-4.4)		(1324-6.0)	

1. MAX IAS:  
INITIAL : 210KT.

Changes: ABN DELETED.

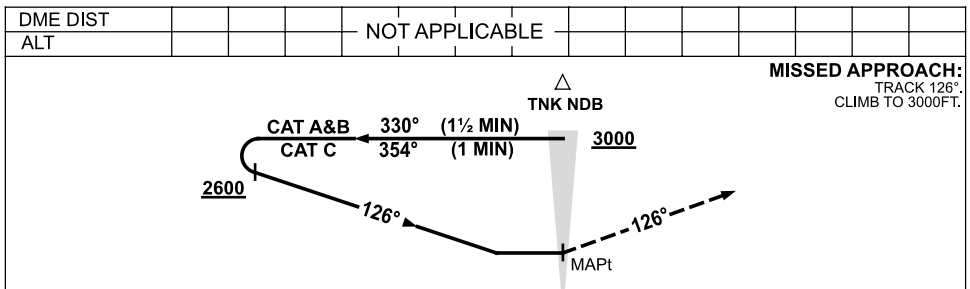
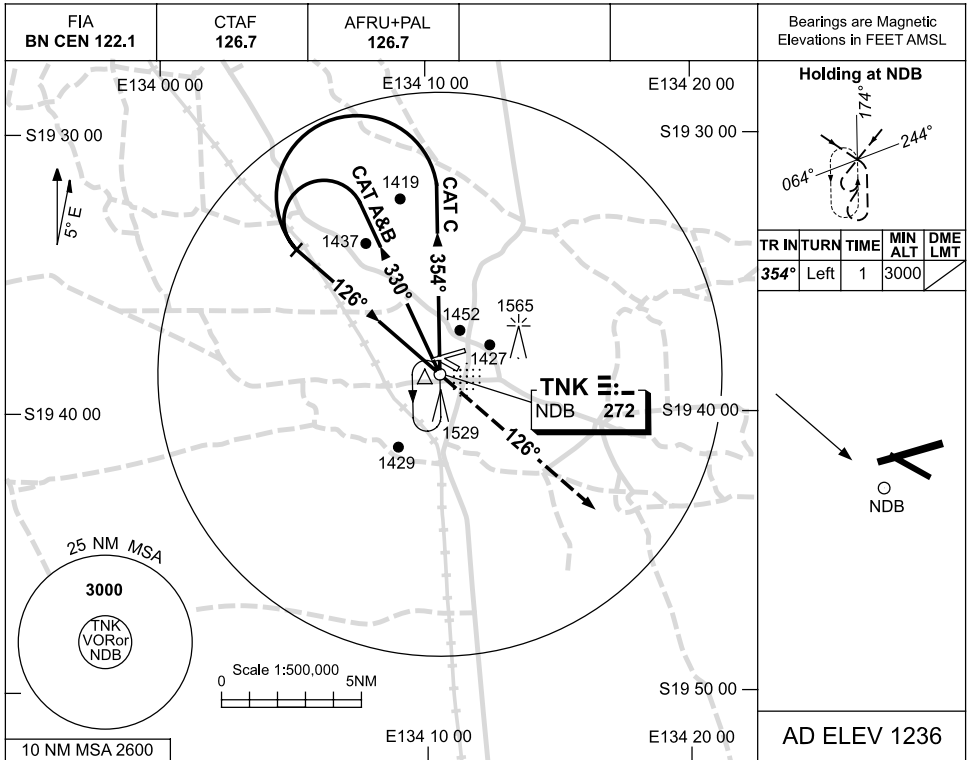
TNKGNO1-125

USE QNH

NDB-A

18 NOV 2010

TENNANT CREEK, NT (YTNK)



**NOTES**

- MAX IAS:  
INITIAL : 210KT.  
HOLDING: 200KT.

CATEGORY	A	B	C	D
CIRCLING	<b>1960</b> (724-2.4)		<b>2060</b> (824-4.0)	NOT APPLICABLE
ALTERNATE	(1224-4.4)		(1324-6.0)	

Changes: ABN DELETED.

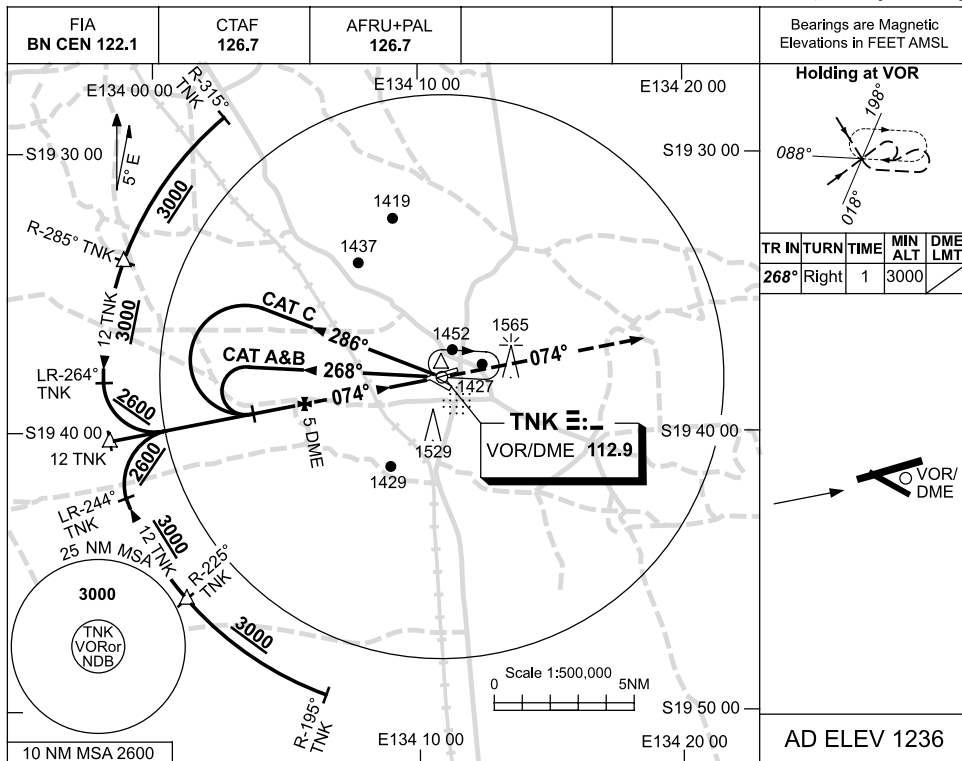
TNKNB01-125

USE QNH

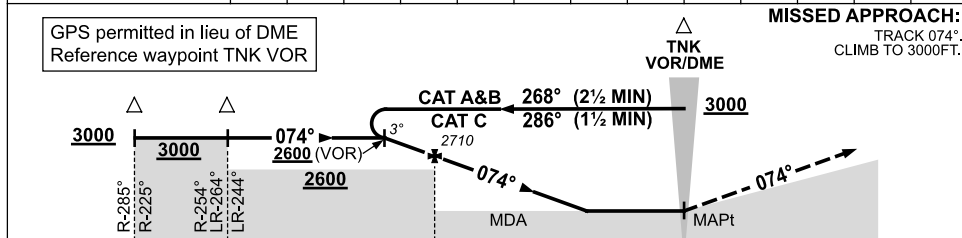
VOR-A

18 NOV 2010

TENNANT CREEK, NT (YTNK)



DIST BY DME	5.9	5	4	3	2.7					
ALT (3° APCH PATH)	3000	2710	2390	2070	1960					



**NOTES**

CATEGORY	A	B	C	D
CIRCLING	1960 (724-2.4)		2060 (824-4.0)	NOT APPLICABLE
ALTERNATE	(1224-4.4)		(1324-6.0)	

1. MAX IAS:  
HOLDING: 200KT.  
INITIAL : 210KT.(VOR)  
PROC CAT A&B 140KT).

Changes: ABN DELETED.

TNKVO01-125