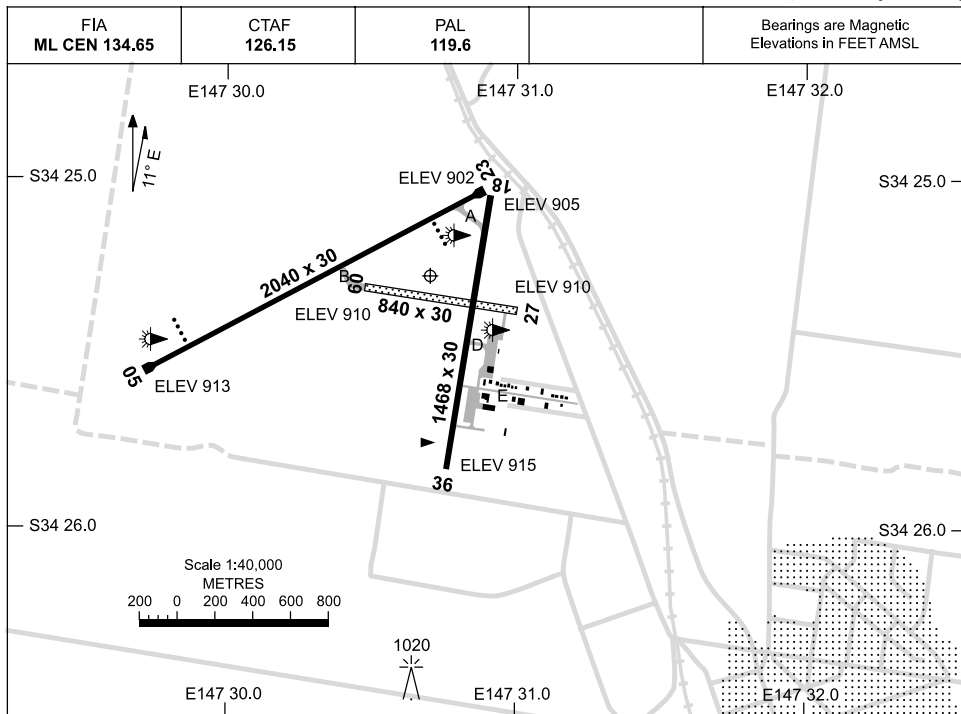


4 JUN 2009

AD ELEV 921
S34 25.3 E147 30.7

AERODROME CHART
TEMORA, NSW (YTEM)



	AERODROME LIGHTING
RWY	TAXIWAY : SIDELINE BLUE RL : PILOT ACTIVATED 119.6
05 <small>050</small>	PAPI 3.0° 41FT LIRL
<small>230</small> 23	PAPI 3.0° 41FT LIRL
18 <small>177</small>	NIL
<small>357</small> 36	NIL
09 <small>087</small>	NIL
<small>267</small> 27	NIL

CAUTION: AD WITHIN R406 AND D427, ACTIVATED BY NOTAM.
PJE OPS HJ.
GLIDING OPS HJ, JF.
AEROBATICS 300-5000FT AGL IMMEDIATELY W OF RWY 18/36 HJ.
BIRD HAZARD.

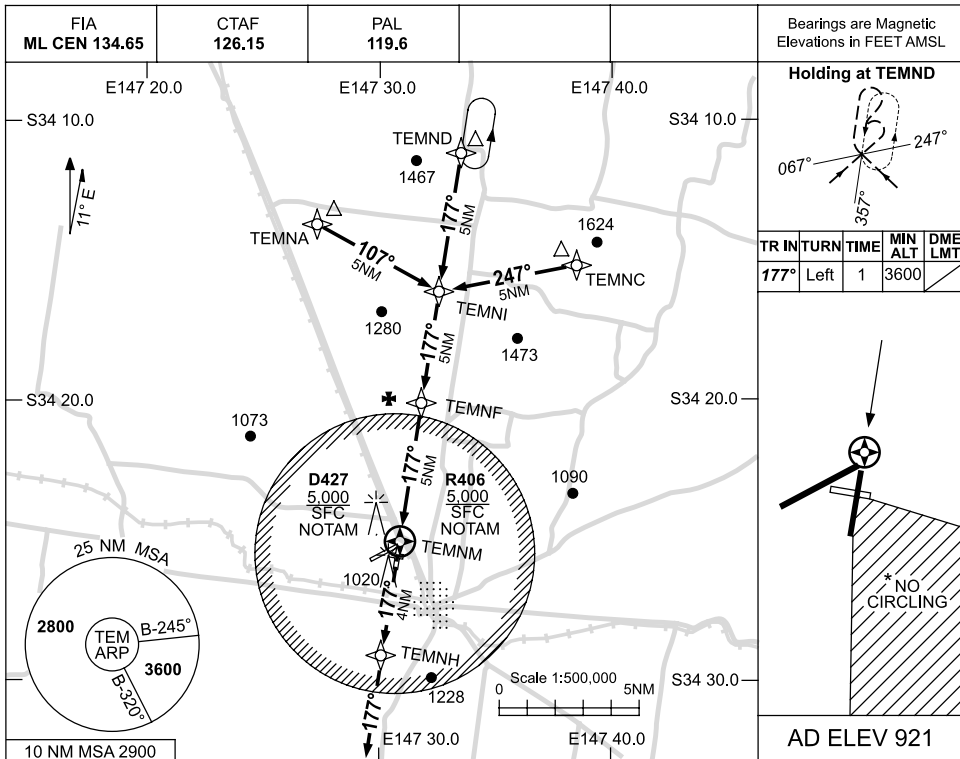
Changes: R406 AND D427 CAUTION, Editorial.

TEMAD01-119

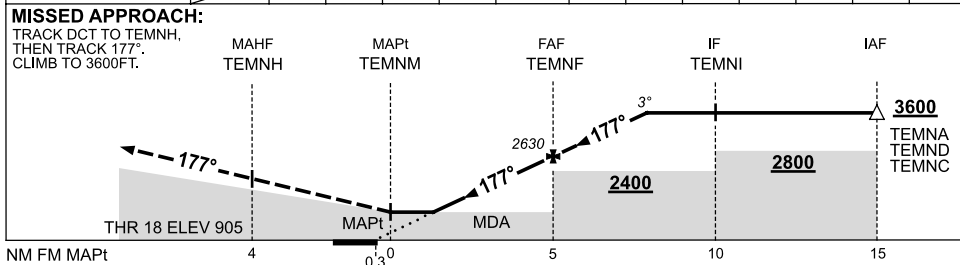
USE QNH

RNAV_(GNSS) RWY 18
TEMORA, NSW (YTEM)

4 JUN 2009



NM TO NEXT WPT	TEMNM	1.9	2	3	4	TEMNF	1	2	3			
ALT (3° APCH PATH)		1660	1680	2000	2310	2630	2950	3270	3600			



NOTES

CATEGORY	A	B	C	D
S-I GNSS	1660 (755-4.3)			NOT APPLICABLE
CIRCLING*	1840 (919-2.4)	1840 (919-4.0)		
ALTERNATE	(1419-4.4)		(1419-6.0)	

- MAX IAS: INITIAL : 210KT.
- NO CIRCLING IN SECTOR SOUTH EAST OF RWYS 27 & 36.
- NIL RWY LGT.

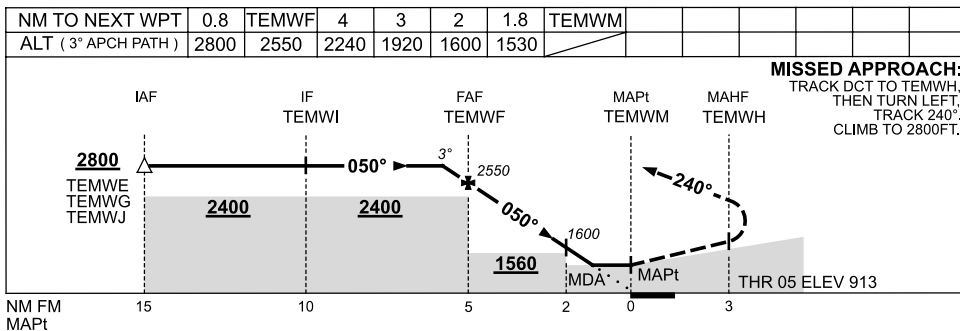
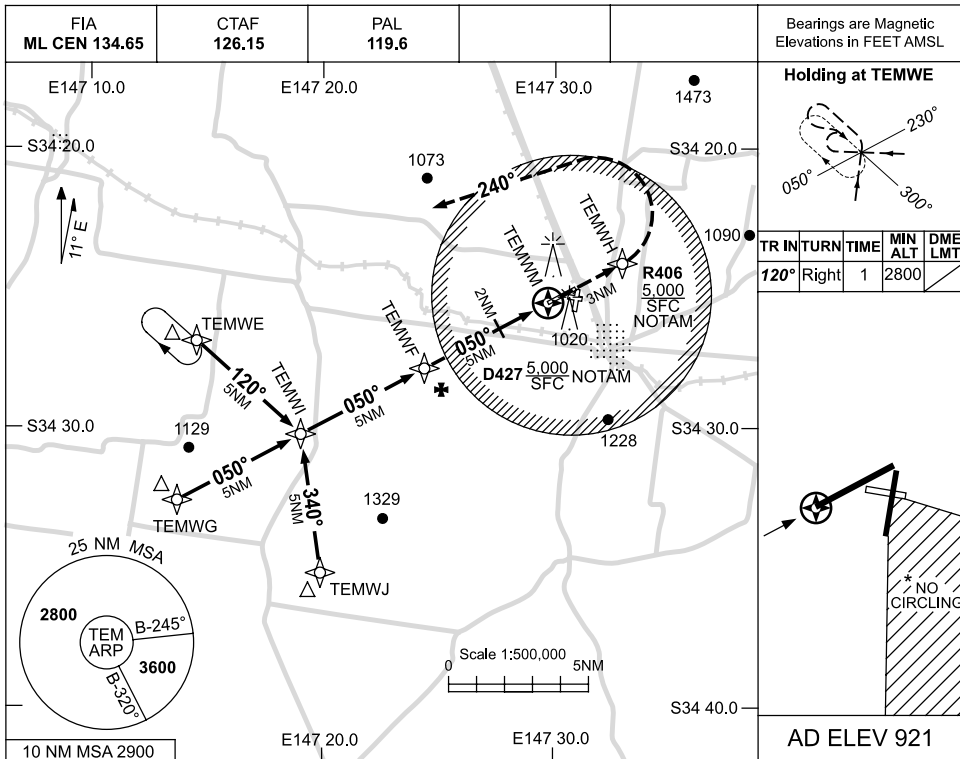
Changes: R406, D427, MAG VAR.

TEMGN01-119

USE QNH

RNAV (GNSS) RWY 05
TEMORA, NSW (YTEM)

4 JUN 2009



NOTES

CATEGORY	A	B	C	D
S-I GNSS	1530 (617-3.5)			
CIRCLING *	1840 (919-2.4)	1840 (919-4.0)	1840 (919-5.0)	
ALTERNATE	(1419-4.4)	(1419-6.0)	(1419-7.0)	

* 2. NO CIRCLING IN SECTOR SOUTH EAST OF RWYS 27 & 36.

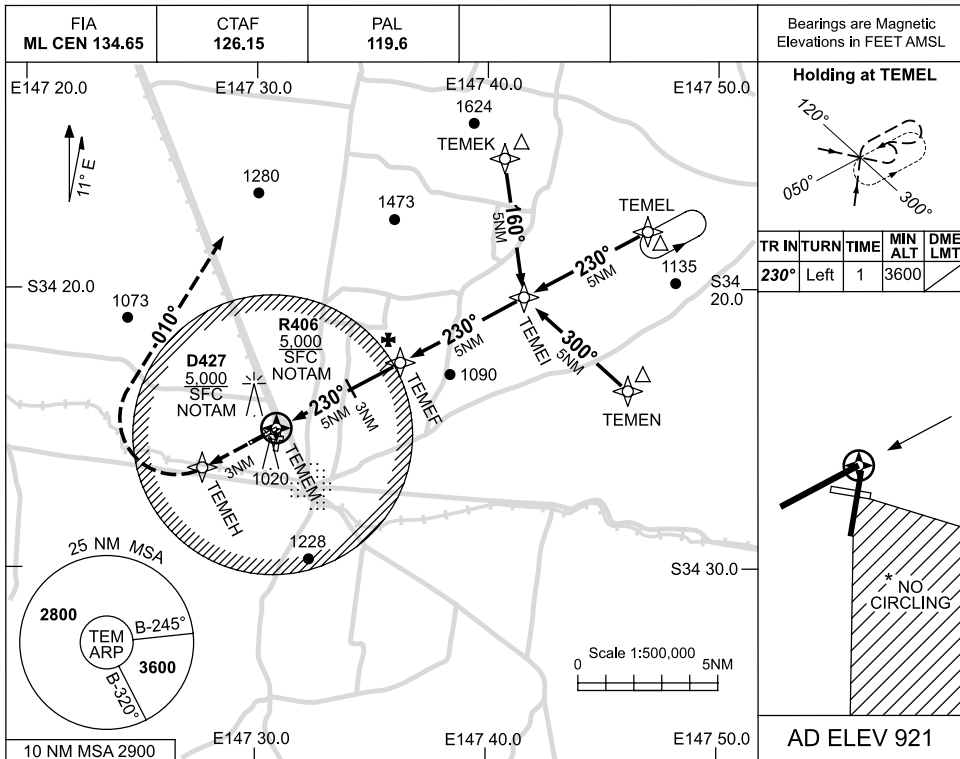
Changes: R406, D427, MAG VAR. TEMGN02-119



USE QNH

RNAV^(GNSS) RWY 23
TEMORA, NSW (YTEM)

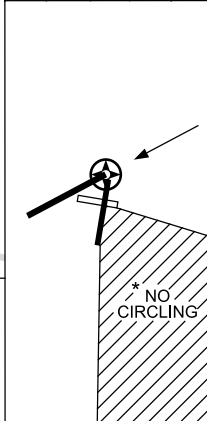
4 JUN 2009



Bearings are Magnetic Elevations in FEET AMSL

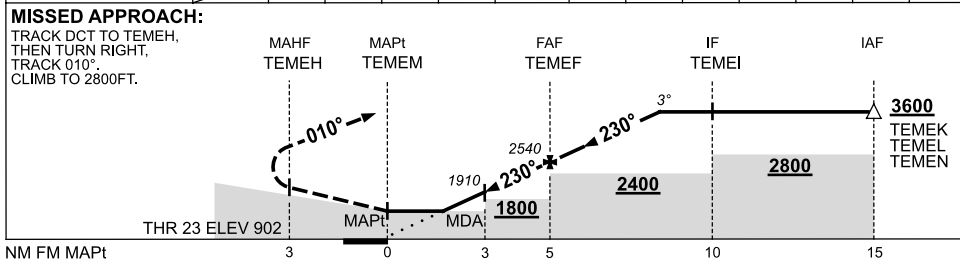
Holding at TEMEL

TR	IN	TURN	TIME	MIN ALT	DME LMT
230°	Left	1		3600	



AD ELEV 921

NM TO NEXT WPT	TEMEM	1.6	2	3	4	TEMEF	1	2	3	3.3		
ALT (3° APCH PATH)		1470	1590	1910	2230	2540	2860	3180	3500	3600		



NOTES

CATEGORY	A	B	C	D
S-I GNSS	1470 (568-3.2)			
CIRCLING *	1840 (919-2.4)	1840 (919-4.0)	1840 (919-5.0)	
ALTERNATE	(1419-4.4)	(1419-6.0)	(1419-7.0)	

- MAX IAS: INITIAL : 210KT.
- * NO CIRCLING IN SECTOR SOUTH EAST OF RWYS 27 & 36.

Changes: R406, D427, MAG VAR. TEMGN03-119

