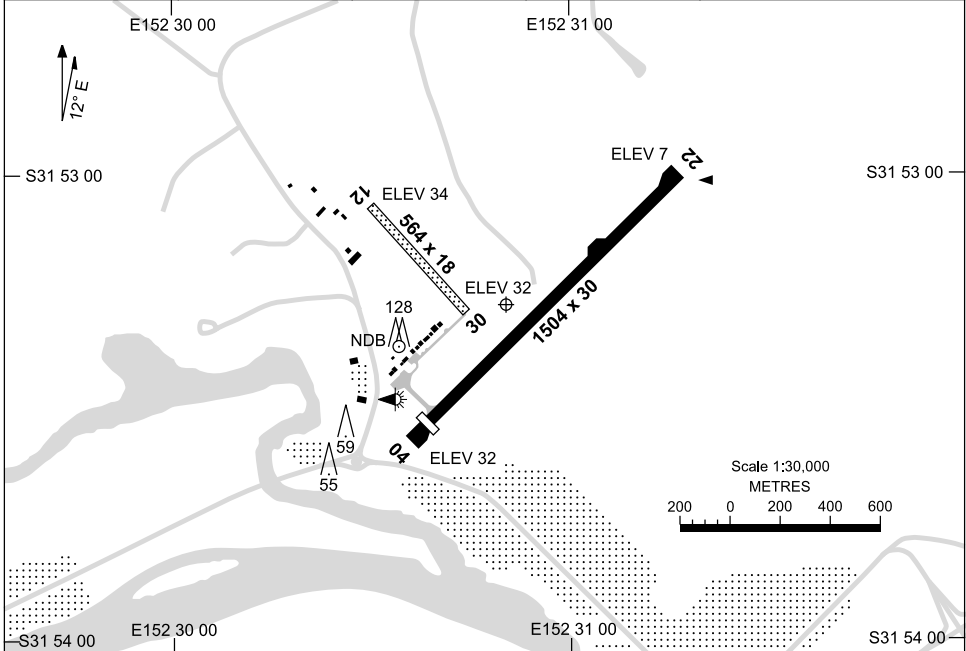


25 AUG 2011

AD ELEV 38
S31 53 19 E152 30 50

AERODROME CHART
TAREE, NSW (YTRE)

FIA BN CEN 120.55	CTAF 118.1	PAL 122.4	Bearings are Magnetic Elevations in FEET AMSL
----------------------	---------------	--------------	--



RWY		AERODROME LIGHTING
		TAXIWAY : SIDELINE BLUE RL : PILOT ACTIVATED LIGHTING 122.4 , SDBY
04 ⁰³³	LIRL	
²¹³ 22	LIRL	
12 ¹²⁵	NIL	
³⁰⁵ 30	NIL	

NOTES

1. AWIS (PHONE) 02 6553 8254

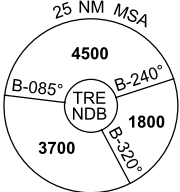
Changes: CO-ORD FORMAT.

TREAD01-128

GPS ARRIVAL PROCEDURES TAREE, NSW (YTRE)

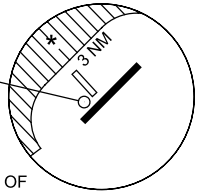
27 AUG 2009

FIA BN CEN 120.55	CTAF 118.1	PAL 122.4	
Bearings are Magnetic Elevations in FEET AMSL			



GPS REFERENCE WAYPOINT TRE NDB

AWIS (PHONE) 02 6553 8254



* NO CIRCLING WEST OF
04/22 OUTSIDE 3NM.

AD ELEV 38

SECTOR A

MISSED APPROACH:

TURN AS
APPROPRIATE,
TRACK 090°. CLIMB TO 1800FT.

NM FM NDB	25	18	15	11	7	6	5	4	3	2	1	0.1					
CIRCLING MINIMA	A,B: 1000-2.4			C: 1000-4.0			D: N/A										
NM FM NDB	11.1	10	9	8	7	6	5	4	3	2	1	0.1					
ALT (3° APCH PATH)	4500	4150	3830	3510	3200	2880	2560	2240	1920	1610	1290	1000					

SECTOR B

MISSED APPROACH:

TURN AS
APPROPRIATE,
TRACK 120°. CLIMB TO 1800FT.

NM FM NDB	25	15	14	9	5	2	0										
CIRCLING MINIMA	A,B: 790-2.4			C: 890-4.0			D: N/A										
NM FM NDB	4.5	4	3	2	1.7	1.3											
ALT (3° APCH PATH)	1800	1630	1320	1000	890	790											

SECTOR C

MISSED APPROACH:

TURN AS
APPROPRIATE,
TRACK 120°. CLIMB TO 1800FT.

NM FM NDB	25	15	14	9	7	6	5	4	3	2	1.7					
CIRCLING MINIMA	A,B: 1000-2.4			C: 1000-4.0			D: N/A									
NM FM NDB	10.2	10	9	8	7	6	5	4	3	2	1.7					
ALT (3° APCH PATH)	3700	3640	3330	3010	2690	2370	2050	1740	1420	1100	1000					

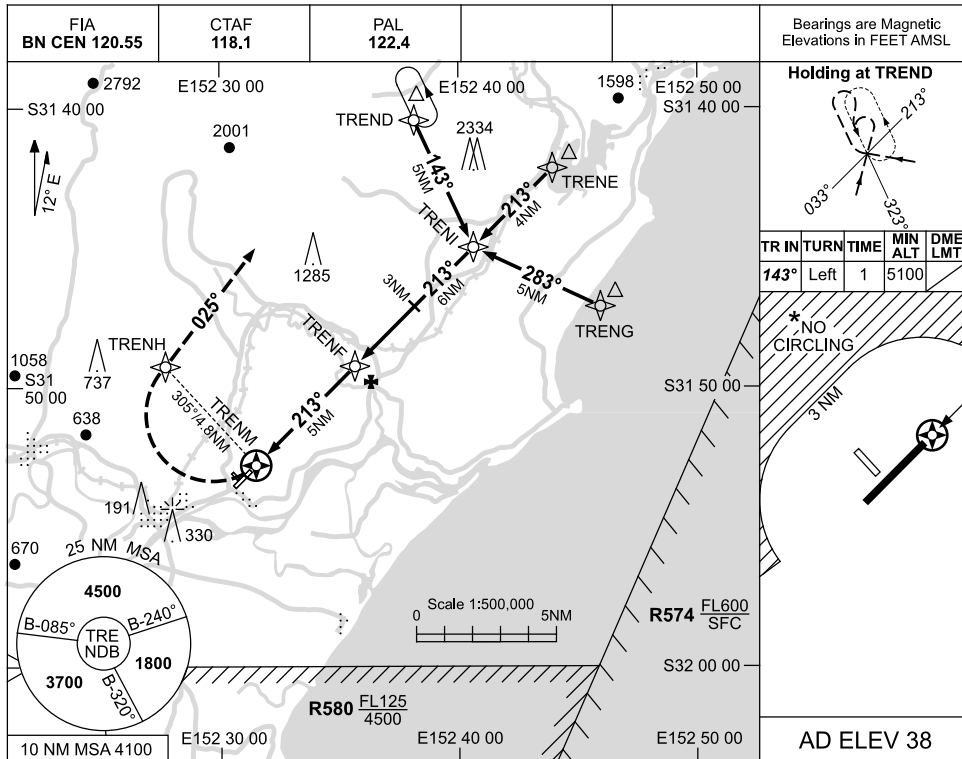
TREDG01-120



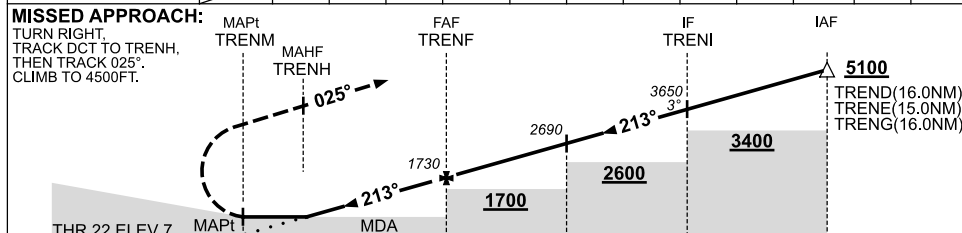
USE QNH

RNAV (GNSS) RWY 22
TAREE, NSW (YTRE)

25 AUG 2011



NM TO NEXT WPT	TRENM	1.6	3	4	TRENF	1	2	3	4	5	TRENI	5.5	
ALT (3° APCH PATH)		640	1100	1420	1730	2050	2370	2690	3010	3330	3650	5100	



CATEGORY	A	B	C	D
S-I GNSS	640 (633-3.6)			NO APPLICABLE
CIRCLING *	790 (752-2.4)	890 (852-4.0)		
ALTERNATE	(1252-4.4)		(1352-6.0)	

NOTES

- MAX IAS:
INITIAL : 210KT.
MAP TURN: 200KT.
- NO CIRCLING W OF RWY 04/22 OUTSIDE 3 NM.
- AWIS (PHONE)
02 6553 8254

CAUTION
HOLDING PATTERN OVERLIES HOLDING FOR YPMQ 03 GPS.

Changes: CO-ORD FORMAT, R574.

TREGN01-128

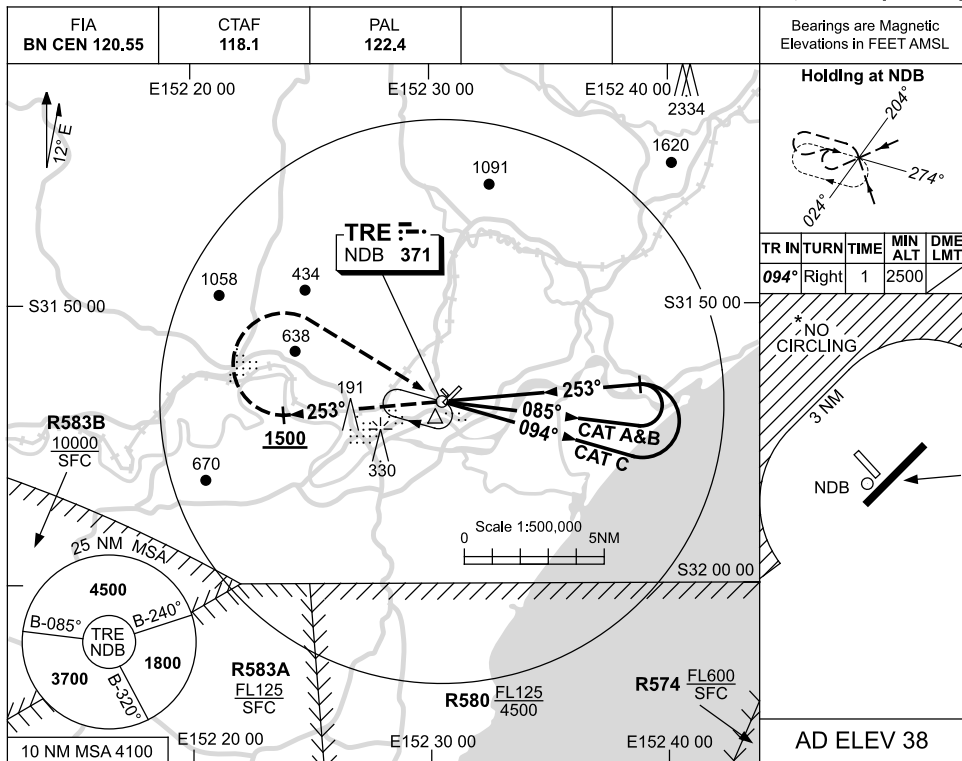


USE QNH

NDB-A

25 AUG 2011

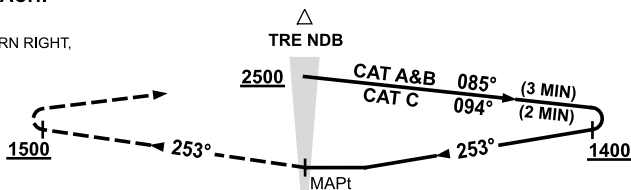
TAREE, NSW (YTRE)



DME DIST	NOT APPLICABLE			
ALT				

MISSED APPROACH:

TRACK 253°.
CLIMB TO 2500FT.
PASSING 1500FT TURN RIGHT,
TRACK TO NDB.



NOTES

- MAX IAS :
HOLDING : 180KT.
INITIAL :
CAT A&B 140KT.
CAT C 180KT.

- NO CIRCLING WEST OF 04/22 OUTSIDE 3NM.

- AWIS (PHONE)
02 6553 8254

CATEGORY	A	B	C	D
CIRCLING *	790 (752-2.4)		890 (852-4.0)	NOT APPLICABLE
ALTERNATE	(1252-4.4)		(1352-6.0)	

Changes: CO-ORD FORMAT, TOPO, R583A, R583B, R580, R574.

TREN01-128