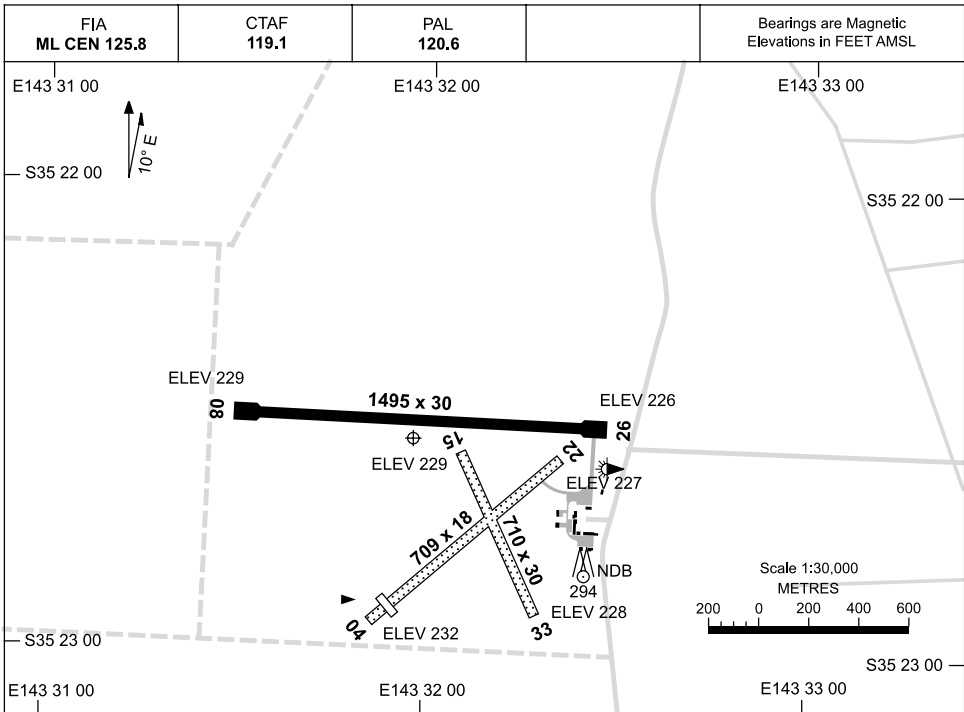


3 JUN 2010

AD ELEV 234  
S35 22 33 E143 32 58

AERODROME CHART  
SWAN HILL, VIC (YSWH)



	<b>AERODROME LIGHTING</b>
<b>RWY</b>	TAXIWAY : SIDELINE BLUE RL : PILOT ACTIVATED 120.6 , PTBL IN EMERG
<b>08</b> <small>081</small> <small>261</small> <b>26</b>	LIRL
<b>04</b> <small>039</small> <small>219</small> <b>22</b>	
<b>15</b> <small>145</small> <small>325</small> <b>33</b>	

**NOTES**

AWIS (PHONE) 03 5032 3396

Changes: DISPL THL, CO-ORD FORMAT.

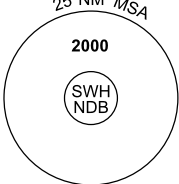
SWHAD01-123

# GPS ARRIVAL PROCEDURES SWAN HILL, VIC (YSWH)

19 NOV 2009

FIA <b>ML CEN 125.8</b>	CTAF <b>119.1</b>	PAL <b>120.6</b>		Bearings are Magnetic Elevations in FEET AMSL
----------------------------	----------------------	---------------------	--	--

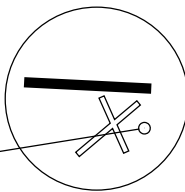
25 NM MSA



10 NM MSA 2000

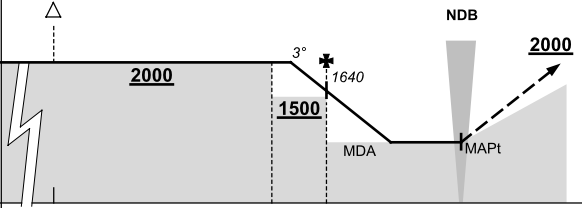
**GPS REFERENCE WAYPOINT SWH NDB**

AWIS (PHONE) 03 5032 3396



**SWH** **NDB** 407

AD ELEV 234

<b>ALL TRACKS TO SWH NDB</b>		<p><b>MISSED APPROACH:</b> CLIMB ON TRACK TO 2000FT.</p>
NM FM NDB	25   15   7   5   0	
<b>CIRCLING MINIMA</b>	A,B: 900-2.4   C: 1060-4.0   D: 1060-5.0	
NM FM NDB	6.2   6   5   4   3.2   3   2.7	
ALT (3° APCH PATH)	2000   1960   1640   1320   1060   1000   900	

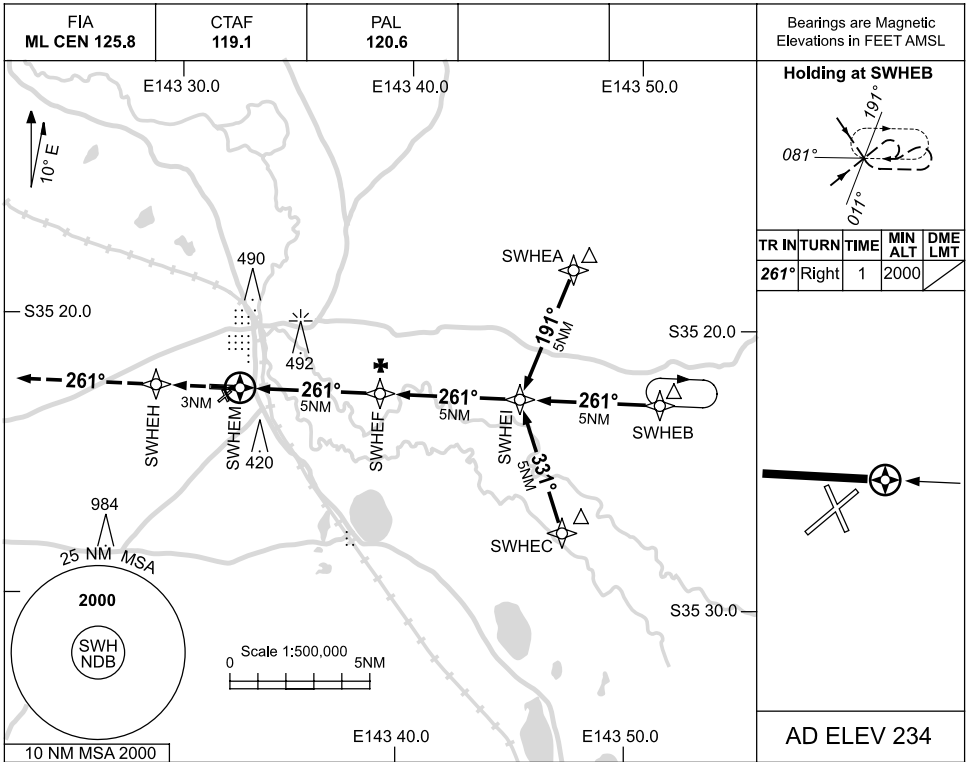
SWHDG01-121

USE QNH

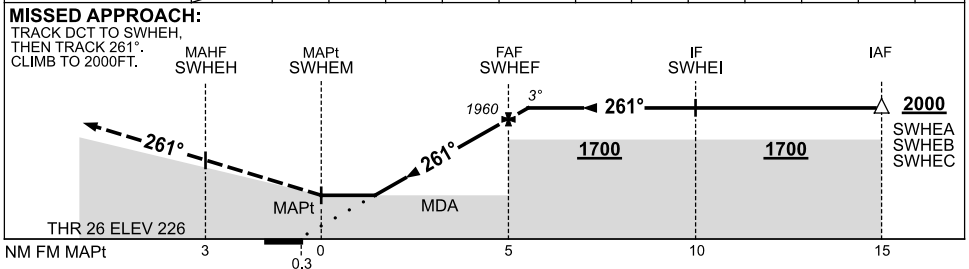
RNAV<sub>(GNSS)</sub>RWY 26

19 NOV 2009

SWAN HILL, VIC (YSWH)



NM TO NEXT WPT	SWHEM	1.5	2	3	4	SWHEF	0.1				
ALT (3° APCH PATH)		840	1000	1320	1640	1960	2000				



**NOTES**

CATEGORY	A	B	C	D
S-I GNSS	<b>840 (614-3.4)</b>			<b>NOT APPLICABLE</b>
CIRCLING	<b>890 (656-2.4)</b>		<b>1060 (826-4.0)</b>	
ALTERNATE	<b>(1156-4.4)</b>		<b>(1326-6.0)</b>	

1. MAX IAS:  
INITIAL : 210KT.
2. AWIS (PHONE)  
03 5032 3396

Changes: AWIS PHONE NO.

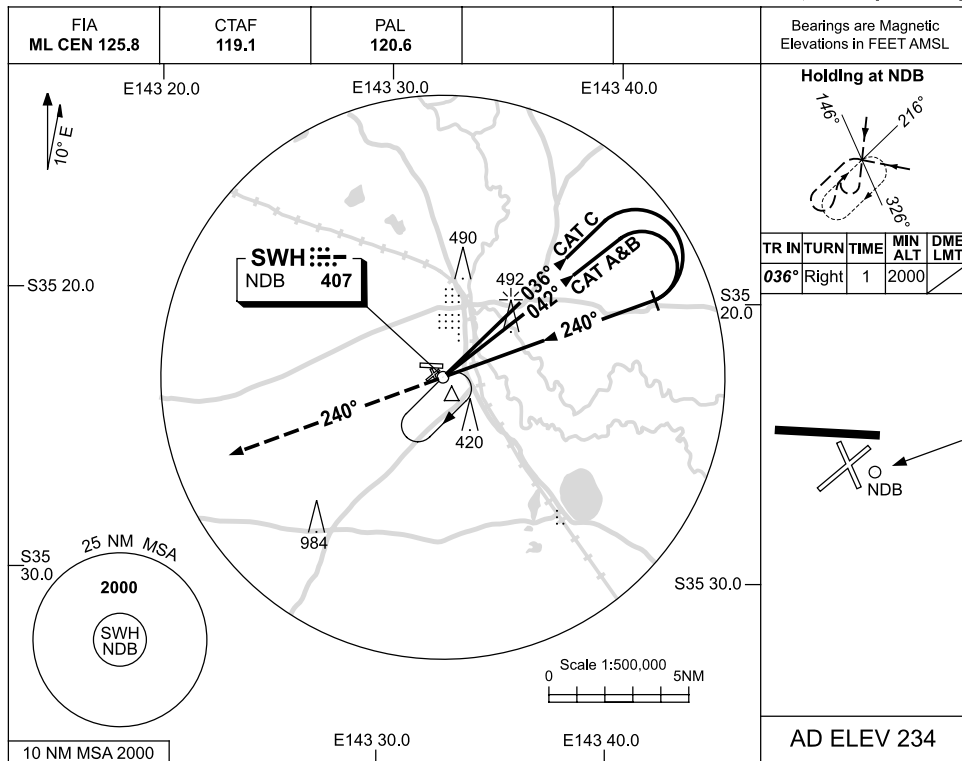
SWHGN01-121

USE QNH

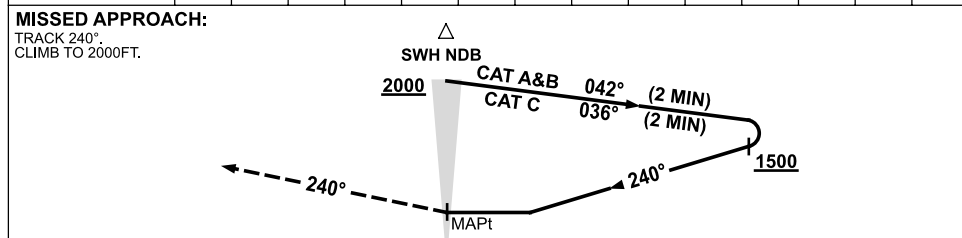
NDB-A

19 NOV 2009

SWAN HILL, VIC (YSWH)



DME DIST	NOT APPLICABLE			
ALT				



**NOTES**

CATEGORY	A	B	C	D
				NOT APPLICABLE
CIRCLING	890 (656-2.4)		1060 (826-4.0)	
ALTERNATE	(1156-4.4)		(1326-6.0)	

1. MAX IAS:  
INITIAL : 210KT.
2. AWIS (PHONE)  
03 5032 3396

Changes: AWIS PHONE NO.

SWHNB01-121