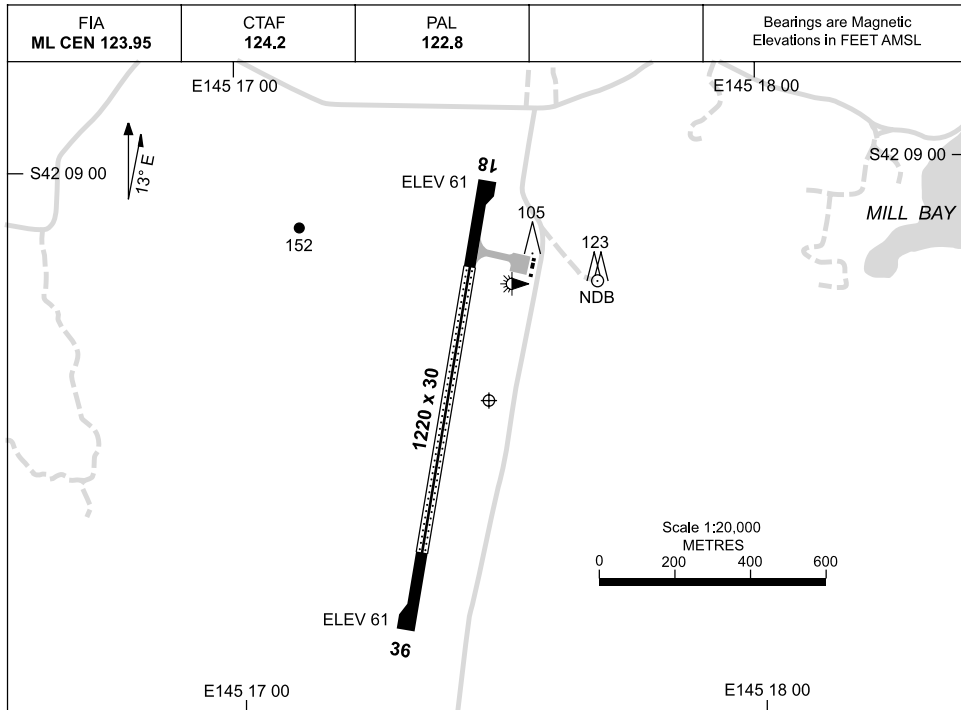


18 NOV 2010

AD ELEV 66
S42 09 20 E145 17 29

AERODROME CHART
STRAHAN, TAS (YSRN)



	AERODROME LIGHTING
RWY	TAXIWAY : SIDELINE BLUE RL : PILOT ACTIVATED 122.8
18 <small>178</small> <small>358</small> 36	LIRL LIRL

NOTES

1. CENTRAL 18M SEALED
2. RIGHT HAND CCTS RWY 18
3. AWIS (PHONE) 03 6471 7607

Changes: CO-ORD FORMAT.

SRNAD01-125

GPS ARRIVAL PROCEDURES STRAHAN, TAS (YSRN)

27 AUG 2009

FIA ML CEN 123.95	CTAF 124.2	PAL 122.8		Bearings are Magnetic Elevations in FEET AMSL
----------------------	---------------	--------------	--	--

25 NM MSA
B-125° 6000
SRN NDB 3600
B-330°

GPS REFERENCE WAYPOINT SRN NDB
AWIS (PHONE) 03 6471 7607

SRN NDB 257

* NO CIRCLING EAST OF RWY 18/36.

10 NM MSA 5100

AD ELEV 66

ALL ROUTES TO SRN NDB											<p>MISSED APPROACH: TURN AS APPROPRIATE, TRACK 270°. CLIMB TO 3600FT.</p>						
	NM FM NDB	25	18	15	5	0											
CIRCLING MINIMA			A,B: 3300-2.4		C: 3300-4.0		D: N/A										
NM FM NDB	7.5	7	6	5	4	3	2	1	0								
ALT (3.39° APCH PATH)	6000	5820	5460	5100	4740	4380	4020	3660	3300								

SRNDG01-120

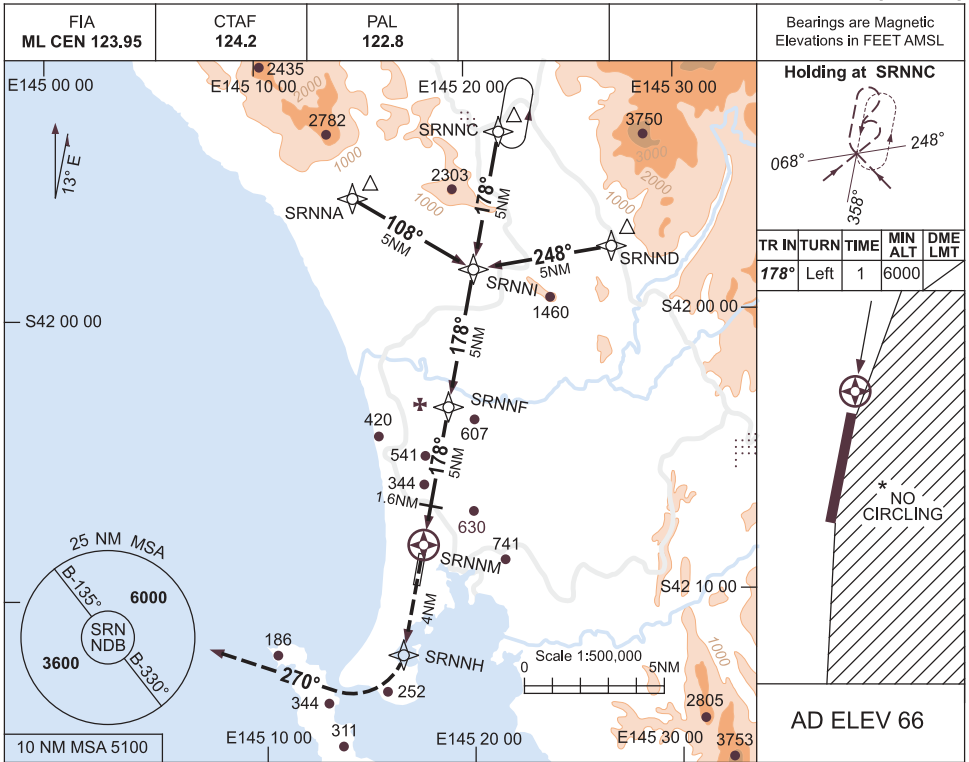


USE QNH

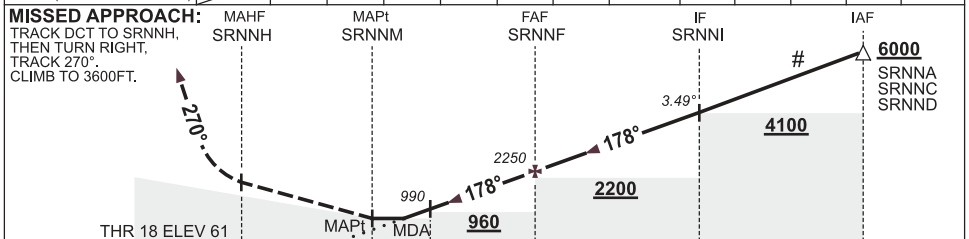
RNAV_(GNSS)RWY 18

18 NOV 2010

STRAHAN, TAS (YSRN)



NM TO NEXT WPT	SRNNM	0.7	1	1.6	2	3	4	SRNNF	1	2	3	4	SRNNI
ALT (3.49° APCH PATH)	660	760	990	1130	1500	1880	2250	2620	2990	3360	3730	4100	



NOTES

- MAX IAS: INITIAL : 210KT.
- NO CIRCLING EAST OF RWY 18/36.
- DESCENT GRADIENT REQUIRED IN INITIAL SEGMENT IS 7.7% (470FT/NM).
- AWIS (PHONE) 03 6471 7607
- COLOUR: SEE SPEC NOTICES.

CATEGORY	A	B	C	D
S-I GNSS	660 (594-3.3)			NOT APPLICABLE
CIRCLING *	840 (774-2.4)		1140 (1074-4.0)	
ALTERNATE	(1274-4.4)		(1574-6.0)	

Changes: CONTOURS, CO-ORD FORMAT, NOTE 5, Editorial.

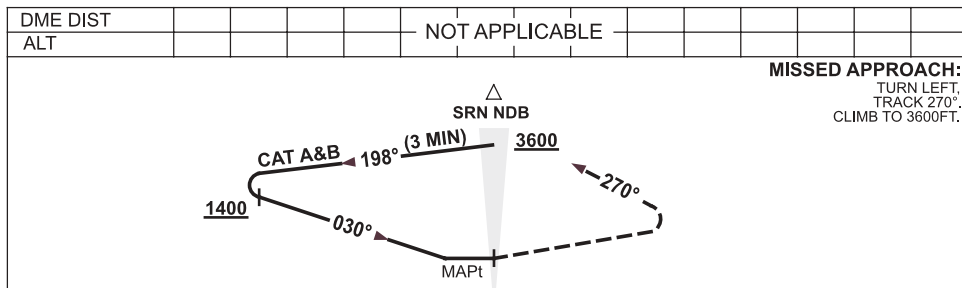
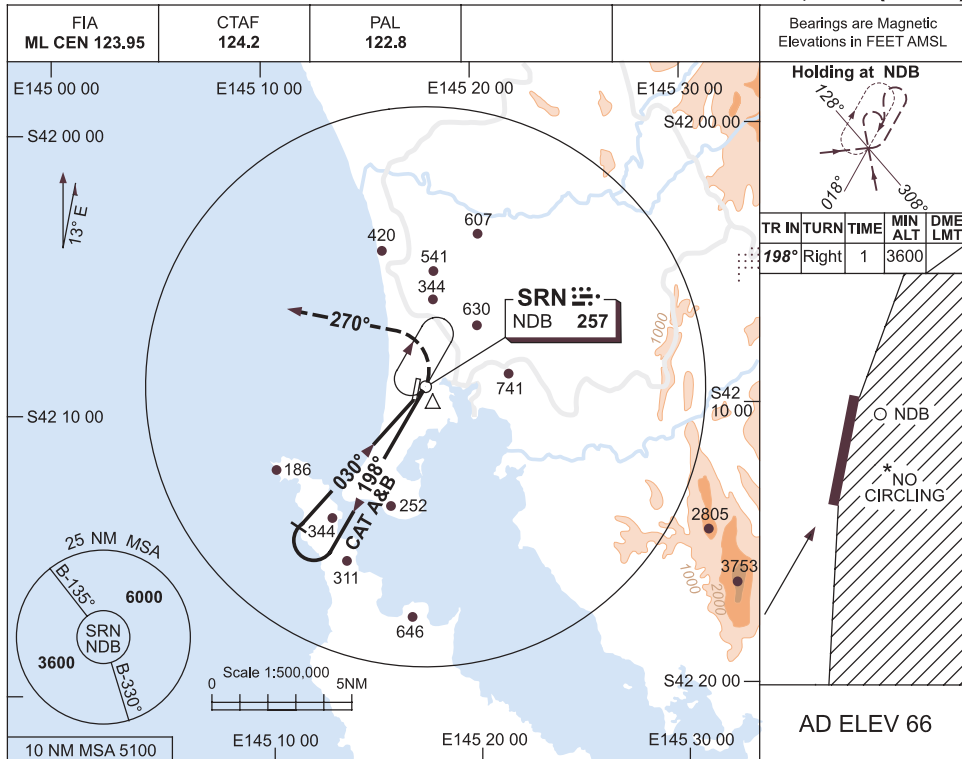
SRNGN01-125

USE QNH

NDB-A

18 NOV 2010

STRAHAN, TAS (YSRN)



NOTES

CATEGORY	A	B	C	D	
			NOT APPLICABLE		
CIRCLING *	840 (774 - 2.4)				
ALTERNATE	(1274 - 4.4)				

1. MAX IAS:
INITIAL : 140KT.
- * 2. NO CIRCLING EAST OF RWY 18/36.
3. AWIS (PHONE)
03 6471 7607
4. COLOUR: SEE SPEC NOTICES.

Changes: TOPO, CONTOURS, CO-ORD FORMAT, NOTE 4.

SRNNB01-125