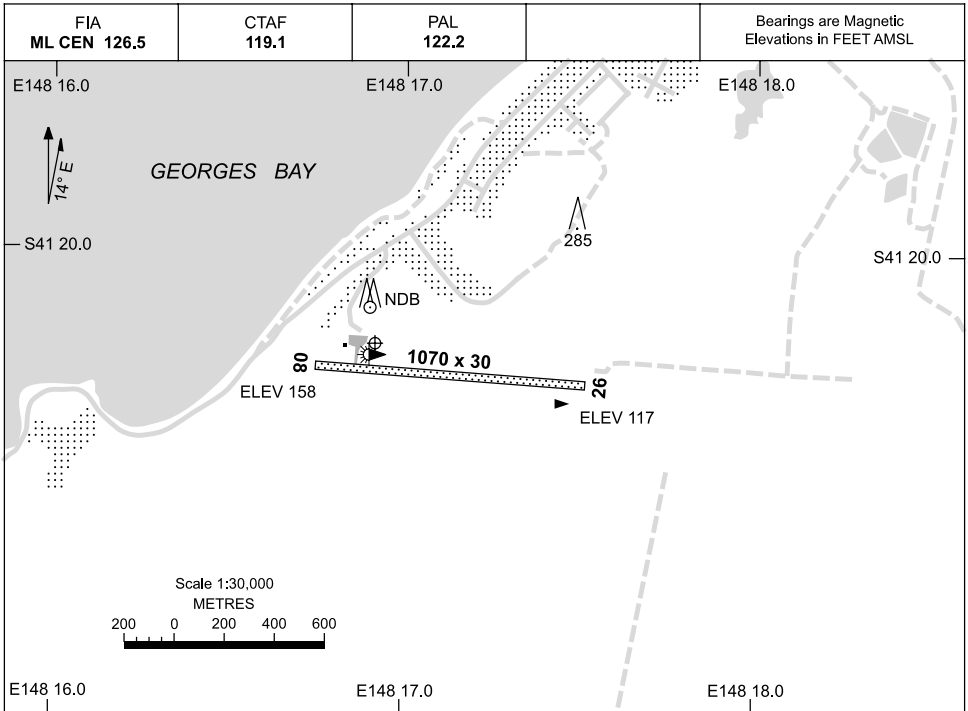


19 NOV 2009

AD ELEV 158
S41 20.2 E148 16.9

AERODROME CHART
ST HELENS, TAS (YSTH)



	AERODROME LIGHTING
RWY	TAXIWAY : SIDELINE BLUE RL : PILOT ACTIVATED 122.2 , PTBL IN EMERG
08 <small>079</small>	LIRL
<small>259</small> 26	LIRL

NOTES

1. RIGHT HAND CIRCUITS RWY 26 HN.
2. NIGHT CIRCUITS MUST REMAIN E OF ST HELENS TOWN AND OVER WATER WHEN AIRCRAFT ARE WEST OF THE AERODROME.
3. RWY 08/26 CENTRAL 18M GRAVELLED.
4. AWIS (PHONE) 03 6376 3581

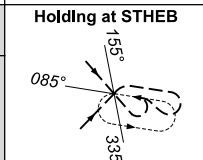
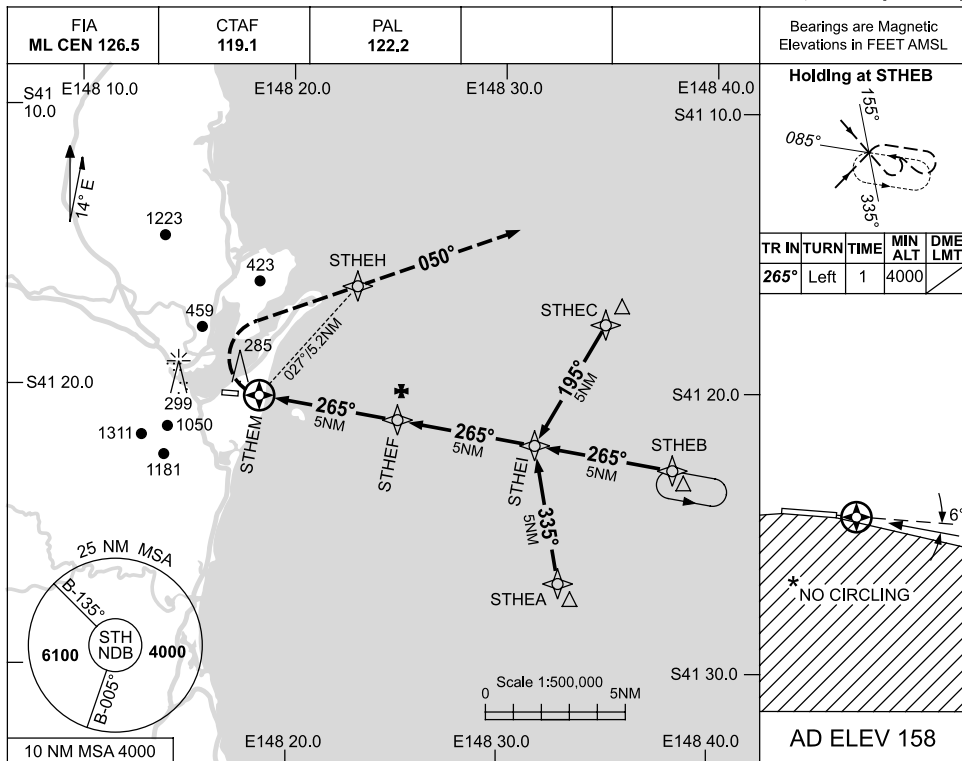
Changes: Editorial.

STHAD01-121

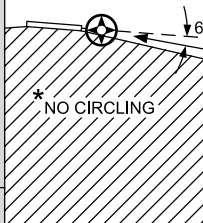
USE QNH

RNAV_(GNSS)RWY 26
ST HELENS, TAS (YSTH)

4 JUN 2009

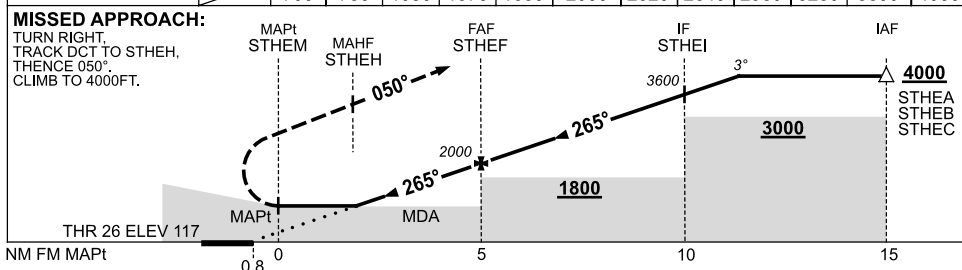


TR	IN	TURN	TIME	MIN ALT	DME LMT
265°	Left	1	4000		



AD ELEV 158

NM TO NEXT WPT	STHEM	0.9	1	2	3	4	STHEF	1	2	3	4	STHEI	1.3
ALT (3° APCH PATH)		700	730	1050	1370	1680	2000	2320	2640	2960	3280	3600	4000



NOTES

CATEGORY	A	B	C	D
S-I GNSS	700 (583-3.3)		NOT APPLICABLE	
CIRCLING *	1050 (892-2.4)			
ALTERNATE	(1392-4.4)			

* 1. NO CIRCLING SOUTH OF RWY 08/26.
 2. AWIS (PHONE) 03 6376 3581

Changes: RWY ALIGNMENT ANGLE, NOTE 2.

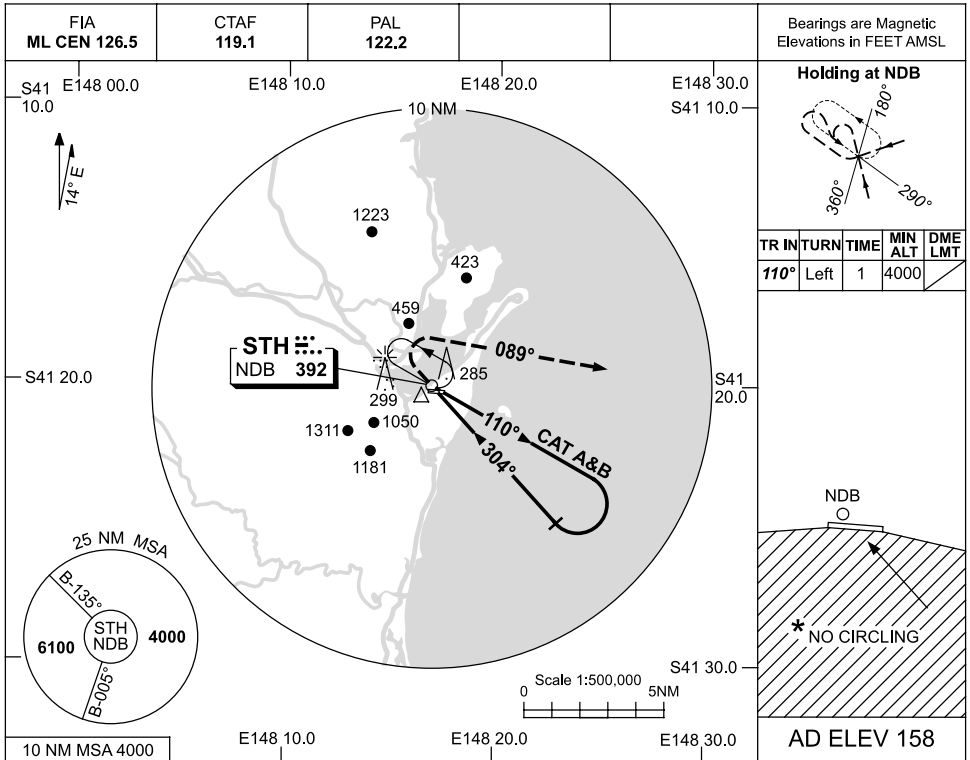
STHGN01-119



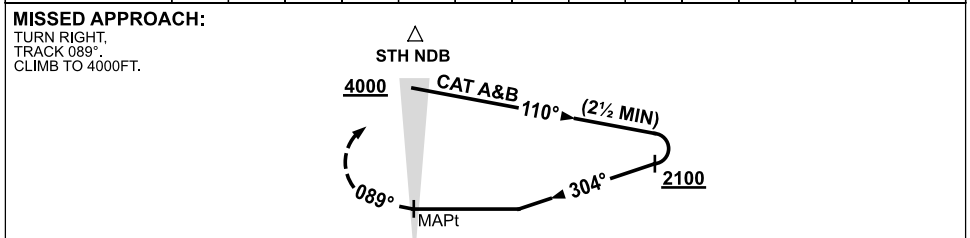
USE QNH

NDB-A
ST HELENS, TAS (YSTH)

4 JUN 2009



DME DIST	NOT APPLICABLE				
ALT					



NOTES

CATEGORY	A	B	C	D	
			NOT APPLICABLE		1. MAX IAS: INITIAL : 140KT. * 2. NO CIRCLING SOUTH OF RWY 08/26. 3. AWIS (PHONE) 03 6376 3581.
CIRCLING *	1050 (892-2.4)				
ALTERNATE	(1392-4.4)				

Changes: NOTE 3, PROC TRACKS.

STHNB01-119