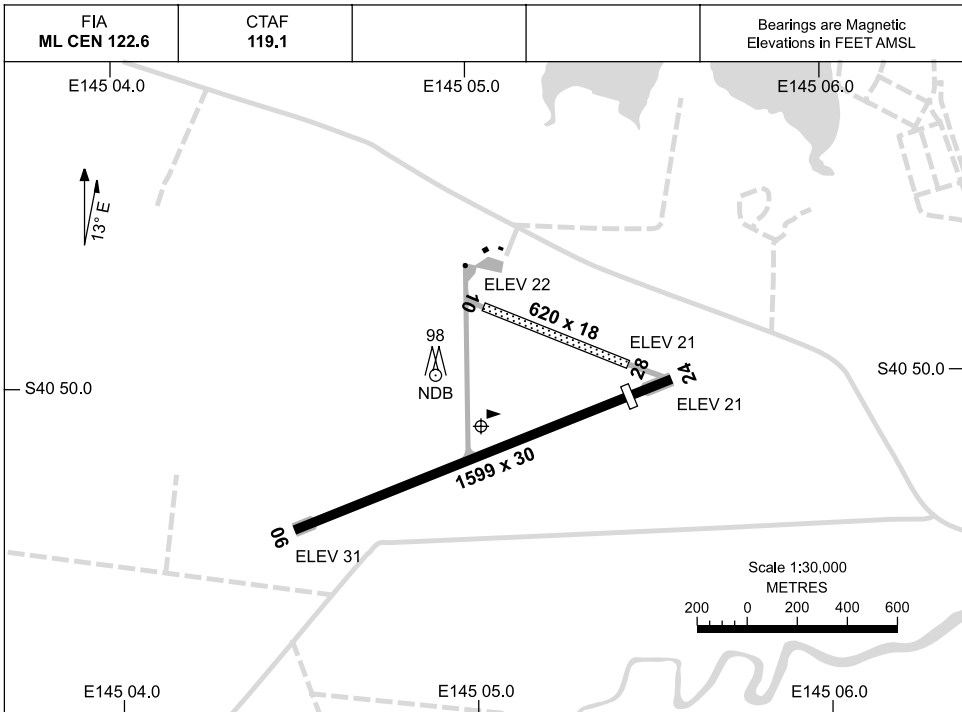


27 AUG 2009

AD ELEV 31
S40 50.1 E145 05.0 *

AERODROME CHART
SMITHTON, TAS (YSMI)



RWY	AERODROME LIGHTING	
		RL : PTBL EMERGENCY ONLY
06 <small>057</small>	NIL	
<small>237</small> 24	NIL	
10 <small>100</small>	NIL	
<small>280</small> 28	NIL	

NOTES

- RIGHT HAND CCTS REQ'D WHEN OPR ON RWYS 24 AND 28.
- AWIS (PHONE) 03 6452 2812

Changes: AWIS PHONE NO, Editorial.

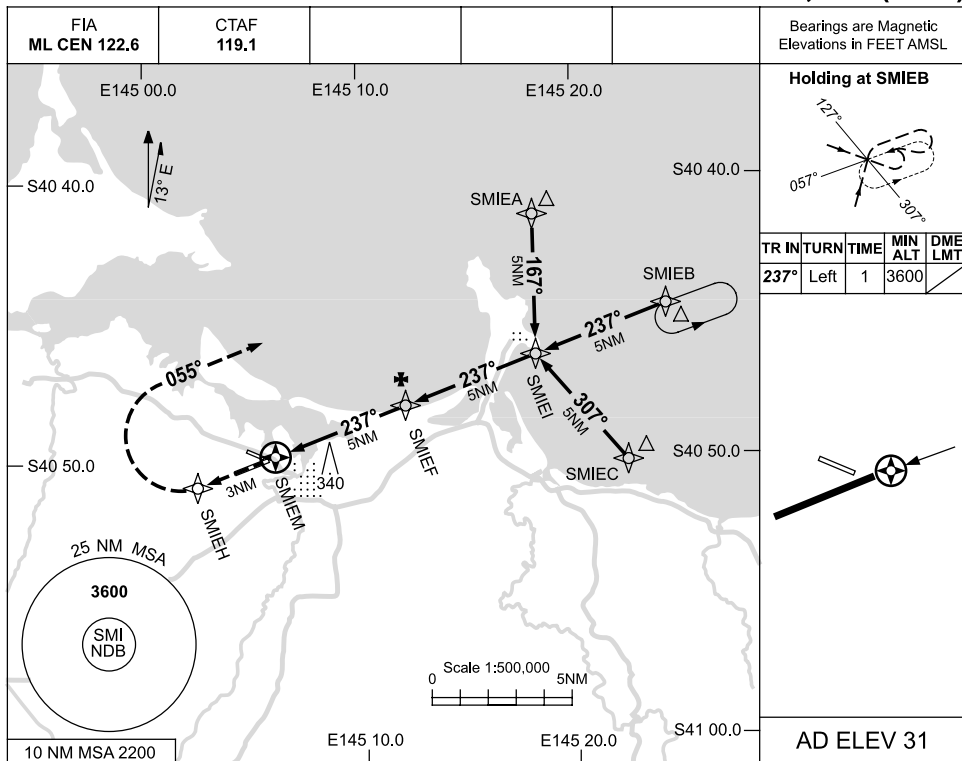
SMIAD01-120

USE QNH

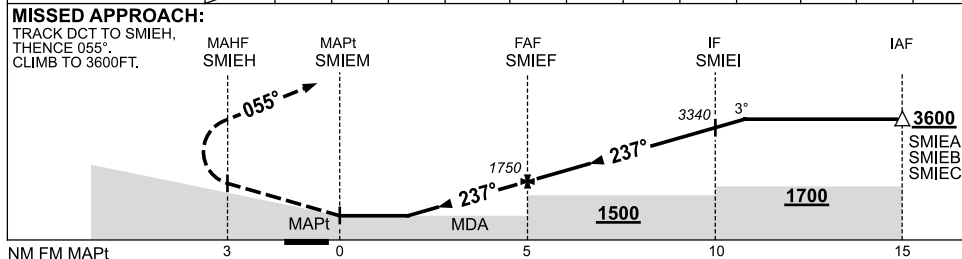
RNAV-E (GNSS)

19 NOV 2009

SMITHTON, TAS (YSMI)



NM TO NEXT WPT	SMIEI	2.3	3	4	SMIEF	1	2	3	4	SMIEI	0.8		
ALT (3° APCH PATH)		900	1110	1430	1750	2070	2390	2700	3020	3340	3600		



NOTES

CATEGORY	A	B	C	D
CIRCLING	900 (869-2.4)		1010 (979-4.0)	
ALTERNATE	(1369-4.4)		(1479-6.0)	
				NOT APPLICABLE

1. MAX IAS: INITIAL : 210KT.
2. RIGHT HAND CIRCUITS REQUIRED WHEN OPERATING ON RWY'S 24 AND 28.
3. AWIS (PHONE) 03 6452 2812

Changes: DIST/ALT SCALE.

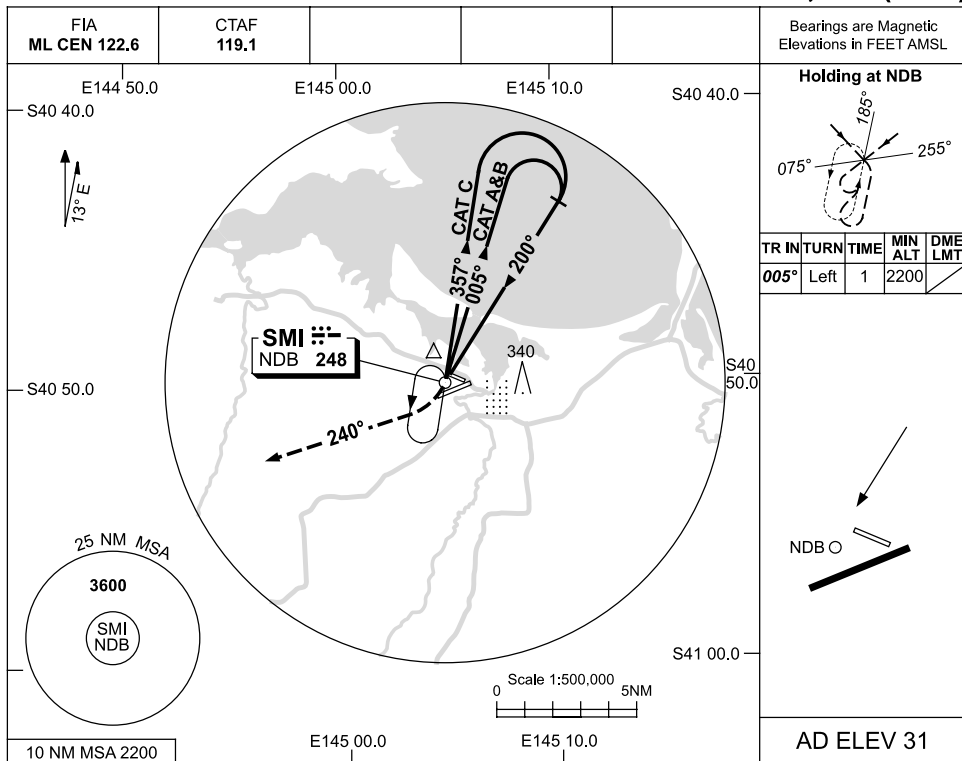
SMIGN01-121

USE QNH

NDB-A

27 AUG 2009

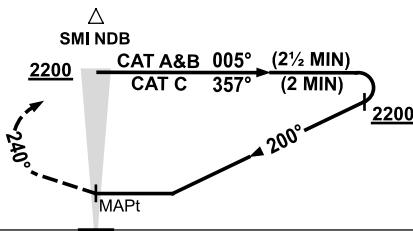
SMITHTON, TAS (YSMI)



DME DIST	NOT APPLICABLE							
ALT								

MISSED APPROACH:

TURN RIGHT,
TRACK 240°.
CLIMB TO 2200FT.



NOTES

1. MAX IAS:
INITIAL : 210KT.
- ‡2. RIGHT HAND CIRCUITS
REQUIRED WHEN
OPERATING ON
RWYS 24 AND 28.
3. AWIS (PHONE)
03 6452 2812

CATEGORY	A	B	C	D
				NOT APPLICABLE
CIRCLING‡	900 (869-2.4)		1010 (979-4.0)	
ALTERNATE	(1369-4.4)		(1479-6.0)	

Changes: AWIS PHONE NO, CAT A/B CIRCLING.

SMINB01-120