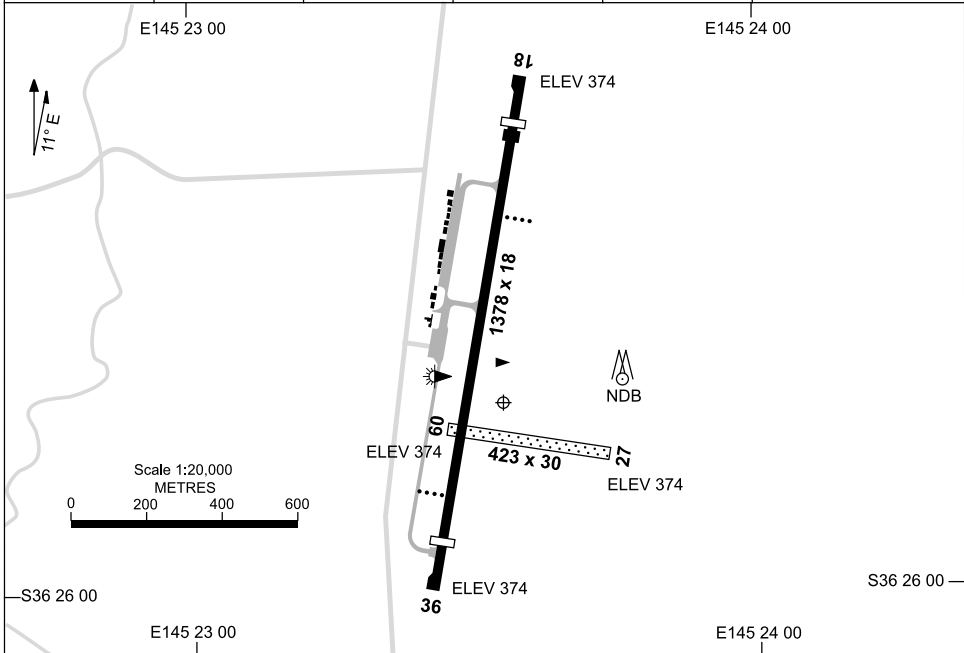


2 JUN 2011

AD ELEV 374
S36 25 44 E145 23 33

AERODROME CHART
SHEPPARTON, VIC (YSHT)

AVIS 212	FIA ML CEN 122.4	CTAF/UNICOM 118.8	AFRU+PAL 118.8	PAL 123.9	Bearings are Magnetic Elevations in FEET AMSL
-------------	---------------------	----------------------	-------------------	--------------	--



RWY	AERODROME LIGHTING	
		TAXIWAY : SIDELINE BLUE RL : PILOT ACTIVATED 123.9 , AFRU+PAL 118.8 , PTBL
18 ¹⁷⁹	PAPI 3.0° 38FT LIRL	
³⁵⁹ 36	PAPI 3.3° 44FT LIRL	
09 ⁰⁸⁸	NIL	
²⁶⁸ 27	NIL	

NOTES

Changes: REMOVE SDBY LIGHTING.

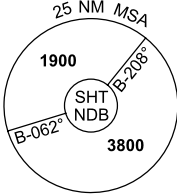
SHTAD01-127

GPS ARRIVAL PROCEDURES SHEPPARTON, VIC (YSHT)

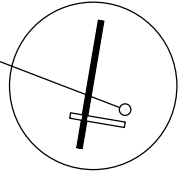
28 AUG 2008

AVIS 212	FIA ML CEN 122.4	CTAF/UNICOM 118.8	AFRU+PAL 118.8	PAL 123.9	Bearings are Magnetic Elevations in FEET AMSL
-------------	---------------------	----------------------	-------------------	--------------	--

GPS REFERENCE WAYPOINT SHT NDB



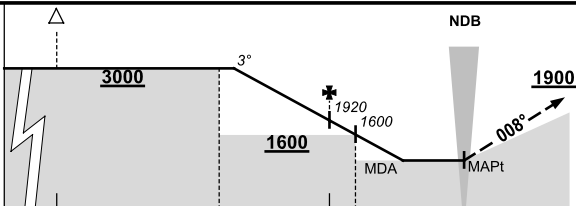
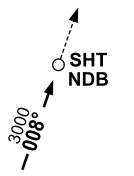
SHT NDB 212



10 NM MSA 2800

AD ELEV 374

MNG TO SHT

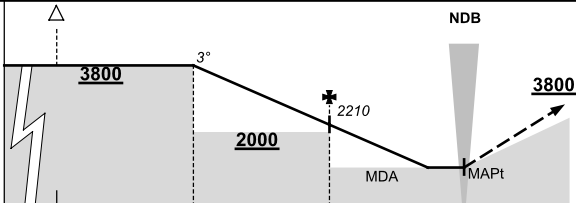
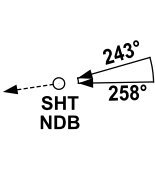


MISSED APPROACH:

TRACK 008°.
CLIMB TO 1900FT.

NM FM NDB	25	15	9	5	4	0													
CIRCLING MINIMA	A,B: 1030-2.4			C: N/A		D: N/A													
NM FM NDB	8.4	8	7	6	5	4	3	2.2											
ALT (3° APCH PATH)	3000	2870	2560	2240	1920	1600	1280	1030											

SECTOR A



MISSED APPROACH:

CLIMB ON TRACK
TO 3800FT.

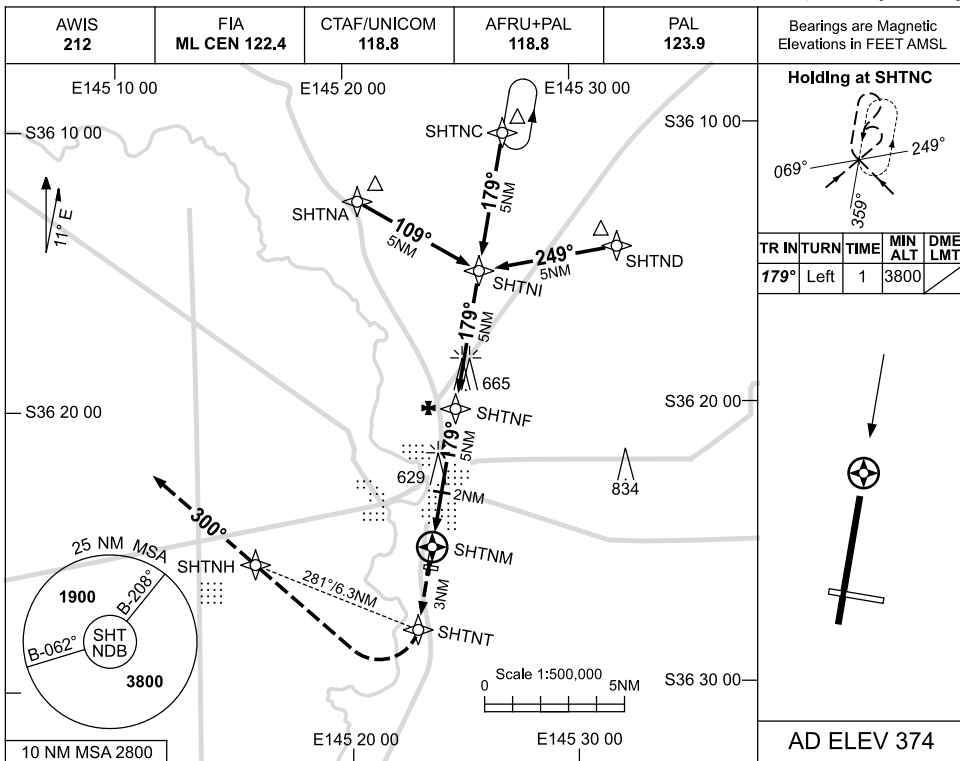
NM FM NDB	25	15	10	5	0														
CIRCLING MINIMA	A,B: 1030-2.4			C: N/A		D: N/A													
NM FM NDB	10	9	8	7	6	5	4	3	2	1.3									
ALT (3° APCH PATH)	3800	3480	3160	2840	2530	2210	1890	1570	1250	1030									

SHTDG01-116

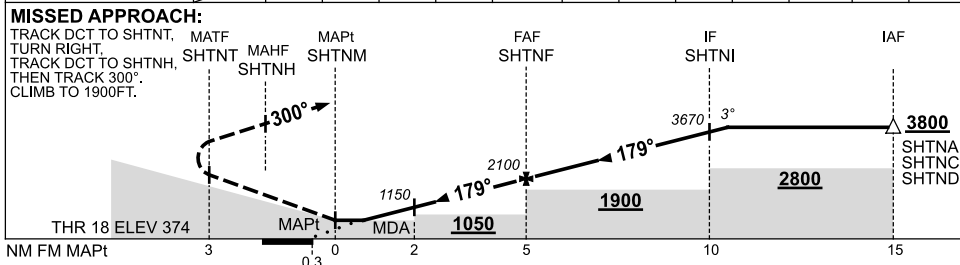
USE QNH

RNAV (GNSS) RWY 18
SHEPPARTON, VIC (YSHT)

25 AUG 2011



NM TO NEXT WPT	SHTNM	1.2	2	3	4	SHTNF	1	2	3	4	SHTNI	0.4	
ALT (3° APCH PATH)		880	1150	1470	1780	2100	2420	2740	3060	3380	3690	3800	



NOTES

CATEGORY	A	B	C	D
S-I GNSS	880 (506-2.8)		NOT APPLICABLE	
CIRCLING	1030 (656-2.4)			
ALTERNATE	(1156-4.4)			

Changes: 665FT OBST, 834FT TWR.

SHTGN01-128

