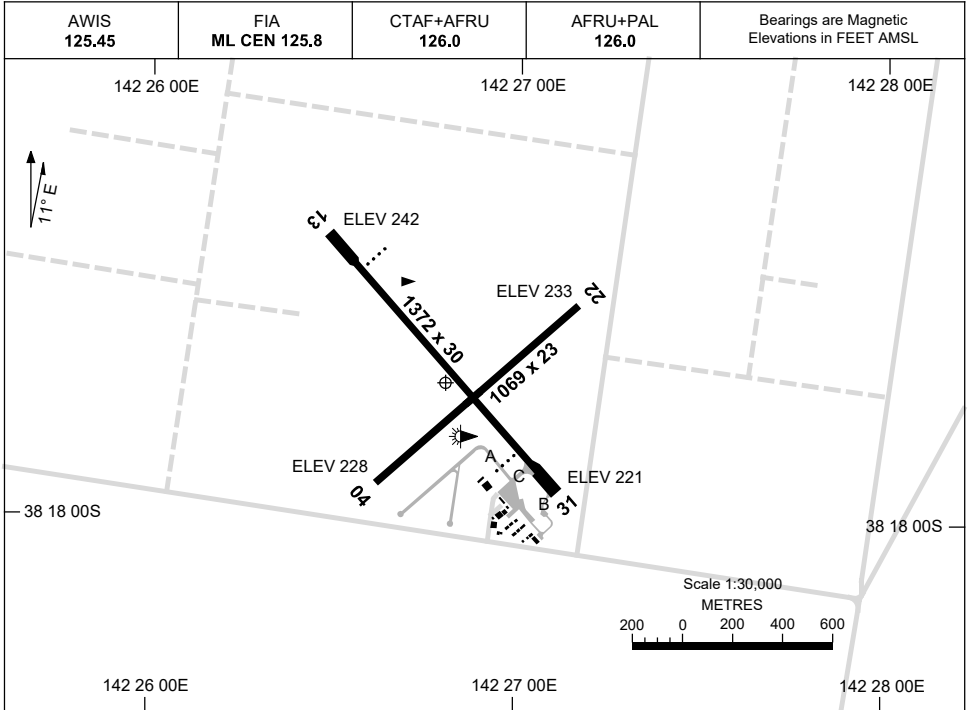


7 SEP 2023

AD ELEV 242  
38 17 43S 142 26 48E

AERODROME CHART  
**WARRNAMBOOL, VIC (YWBL)**



	<b>AERODROME LIGHTING</b>
<b>RWY</b>	TAXIWAY : BLUE EDGE RL : AFRU+PAL 126.0 , SDBY PWR (30 SEC)
<b>13</b> <sup>127</sup> 307 <b>31</b>	PAPI 3.0° 29FT LIRL PAPI 3.0° 29FT LIRL
<b>04</b> <sup>037</sup> 217 <b>22</b>	NIL NIL

**NOTES**

1. AWIS RQ 1 SEC PULSE ACT.
2. FIA 125.8 AVBL IN CIRCUIT AREA.

Changes: RWY 22 THR ELEV.

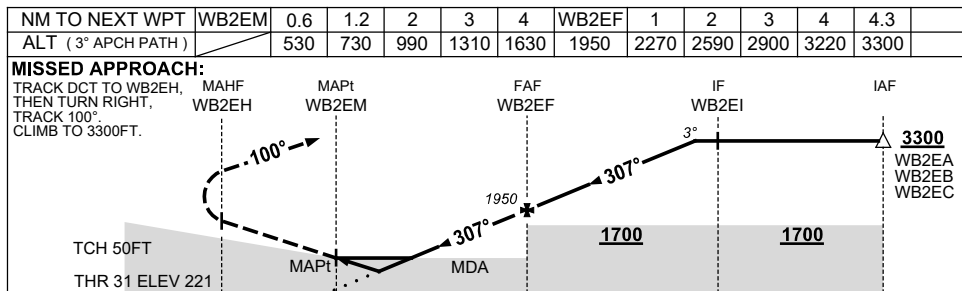
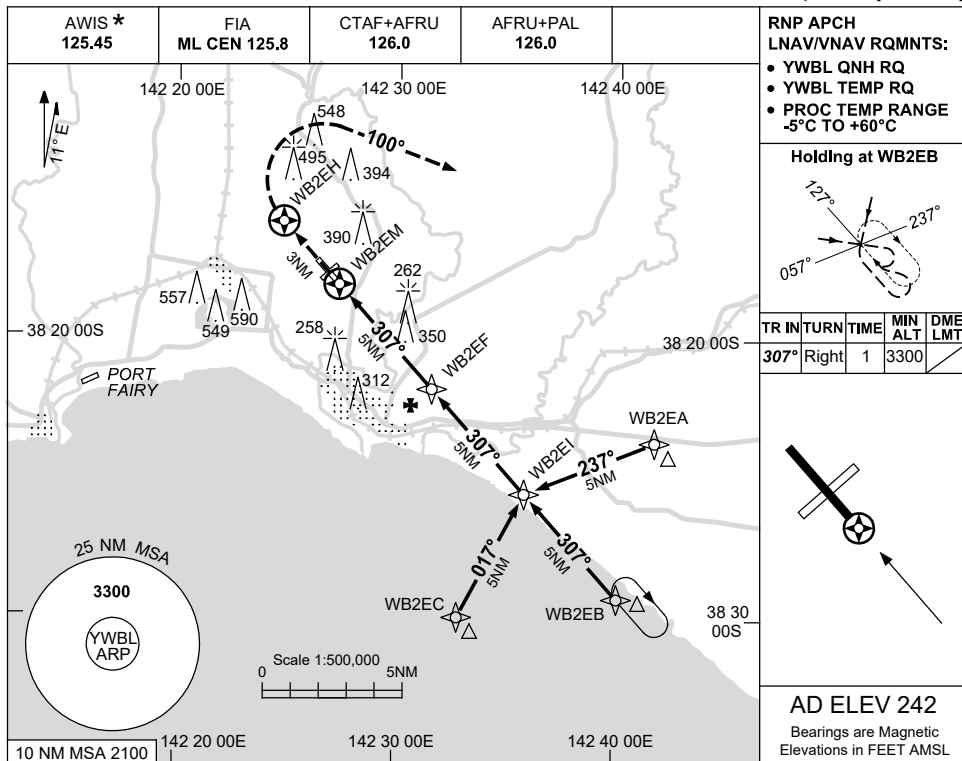
WBLAD01-176

USE QNH

RNP RWY 31

7 SEP 2023

WARRNAMBOOL, VIC (YWBL)



**NOTES**

CATEGORY	A	B	C	D
LNAV/VNAV	530 (309-1.7)			NOT APPLICABLE
LNAV	730 (509-2.9)			
CIRCLING	840 (598-2.4)		1090 (848-4.0)	
ALTERNATE	(1098-4.4)		(1348-6.0)	

1. MAX IAS:  
INITIAL : 210KT.
- \*2. AWIS 125.45 REQ  
1SEC PULSE TO ACT.

Changes: WPT NAMING, Editorial.

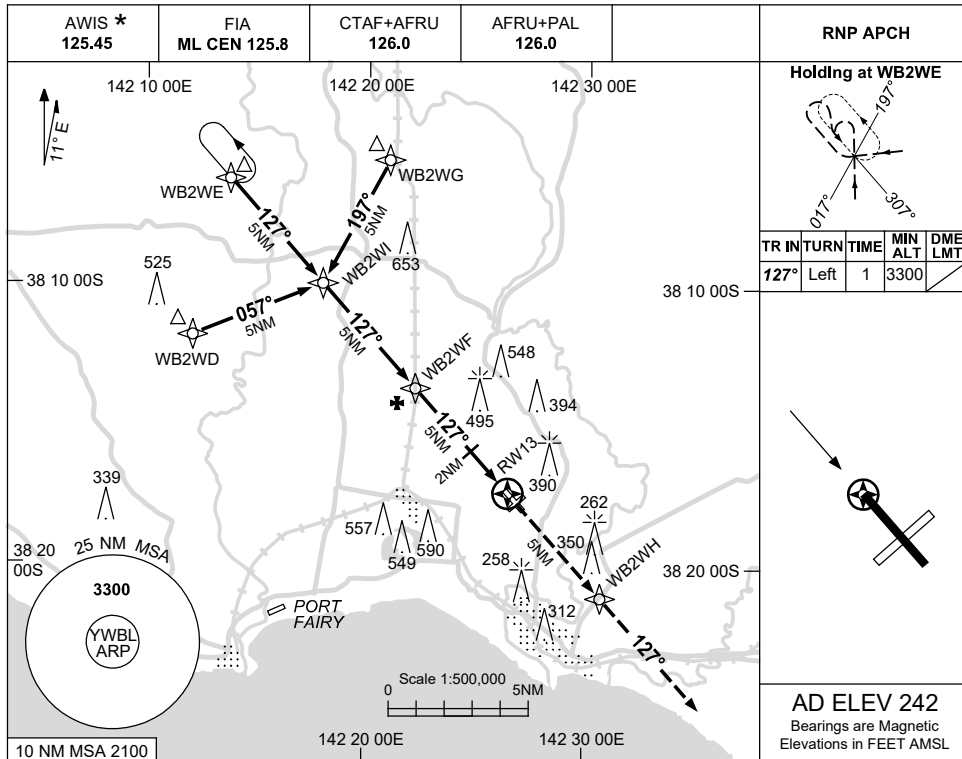
WBLGN01-176

USE QNH

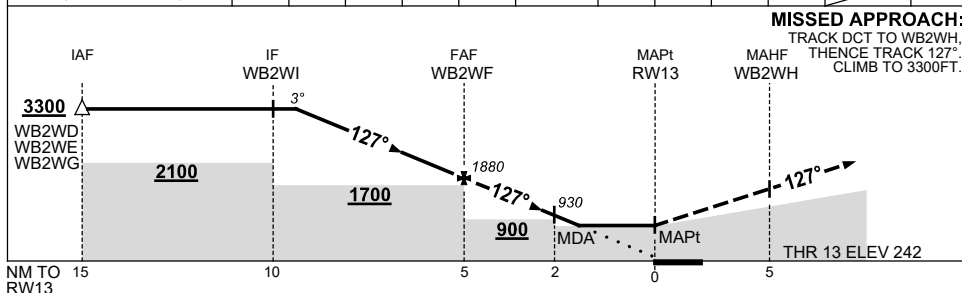
RNP RWY 13

7 SEP 2023

WARRNAMBOOL, VIC (YWBL)



NM TO NEXT WPT	4.4	4	3	2	1	WB2WF	4	3	2	1.4	RW13	
ALT (° APCH PATH)	3300	3160	2840	2520	2200	1880	1570	1250	930	750		



**NOTES**

CATEGORY	A	B	C	D
LNAV	<b>750 (508-2.9)</b>			<b>NOT APPLICABLE</b>
CIRCLING	<b>840 (598-2.4)</b>		<b>1090 (848-4.0)</b>	
ALTERNATE	<b>(1098-4.4)</b>		<b>(1348-6.0)</b>	

1. MAX IAS:  
INITIAL : 210KT.
- \* 2. AWIS 125.45 REQ  
1SEC PULSE TO ACT.

Changes: MINIMUM ALT, VIS, WPT NAMING, Editorial.

WBLGN02-176