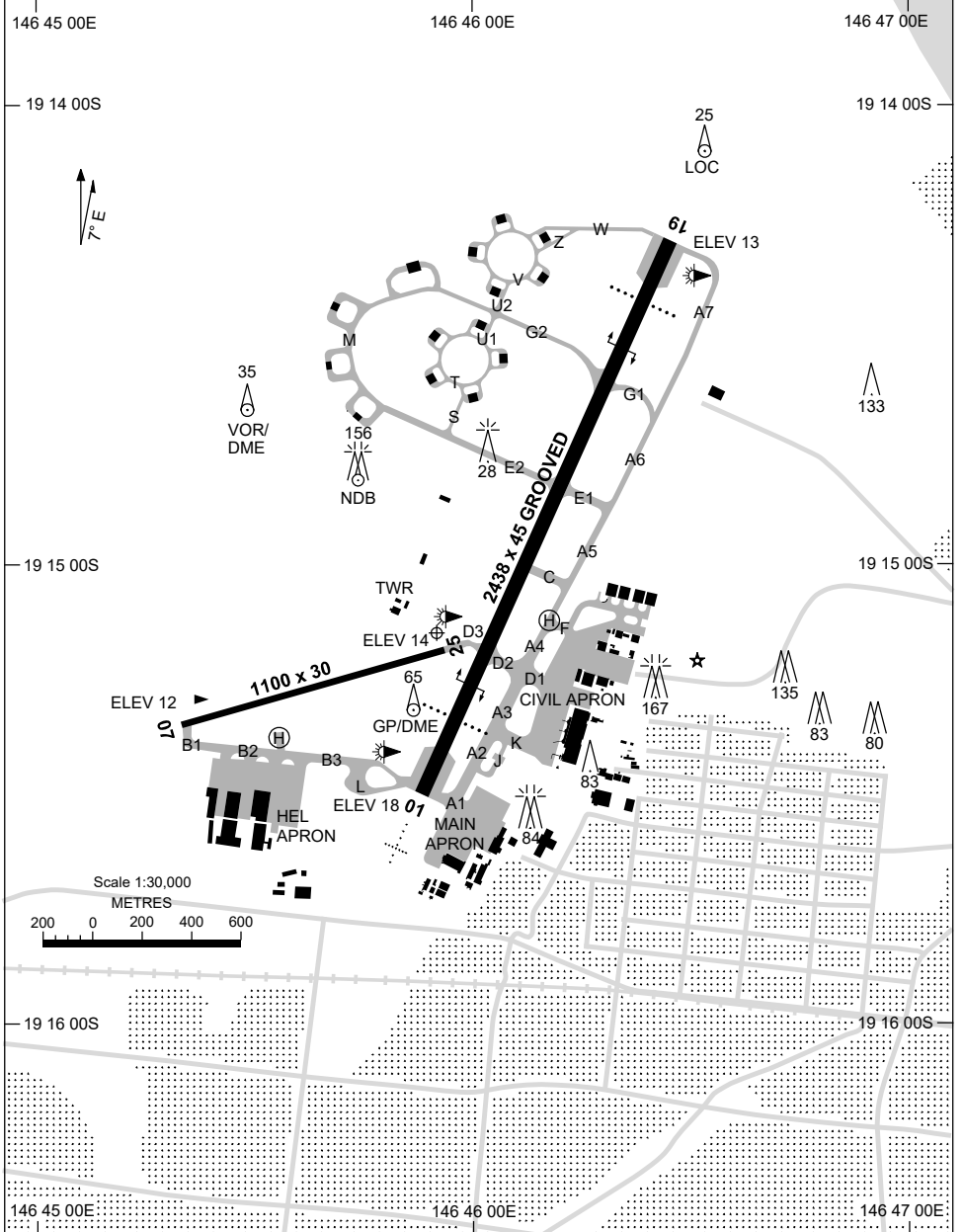


ATIS 114.1 133.5 276	ACD 128.1	SMC 121.8 264.6	TWR 118.3	FIA (AH) BN CEN 120.55	CTAF+AFRU (AH) AFRU+PAL (AH) 118.3	AWIS (AH) 133.5	Bearings are Magnetic Elevations in FEET AMSL
-------------------------	--------------	--------------------	--------------	------------------------------	--	--------------------	--



Changes: LOCATION NAME.

BTLD01-161

1 DEC 2022

19 15 09S 146 45 55E

TOWNSVILLE/TOWNSVILLE INTL, QLD (YBTL)

ATIS 114.1 133.5 276	ACD 128.1	SMC 121.8 264.6	TWR 118.3	FIA (AH) BN CEN 120.55	CTAF+AFRU (AH) AFRU+PAL (AH) 118.3	AWIS (CTAF HR) 133.5	Bearings are Magnetic Elevations in FEET AMSL
-------------------------	--------------	--------------------	--------------	------------------------------	--	-------------------------	--

--	--	--	--	--	--	--	--

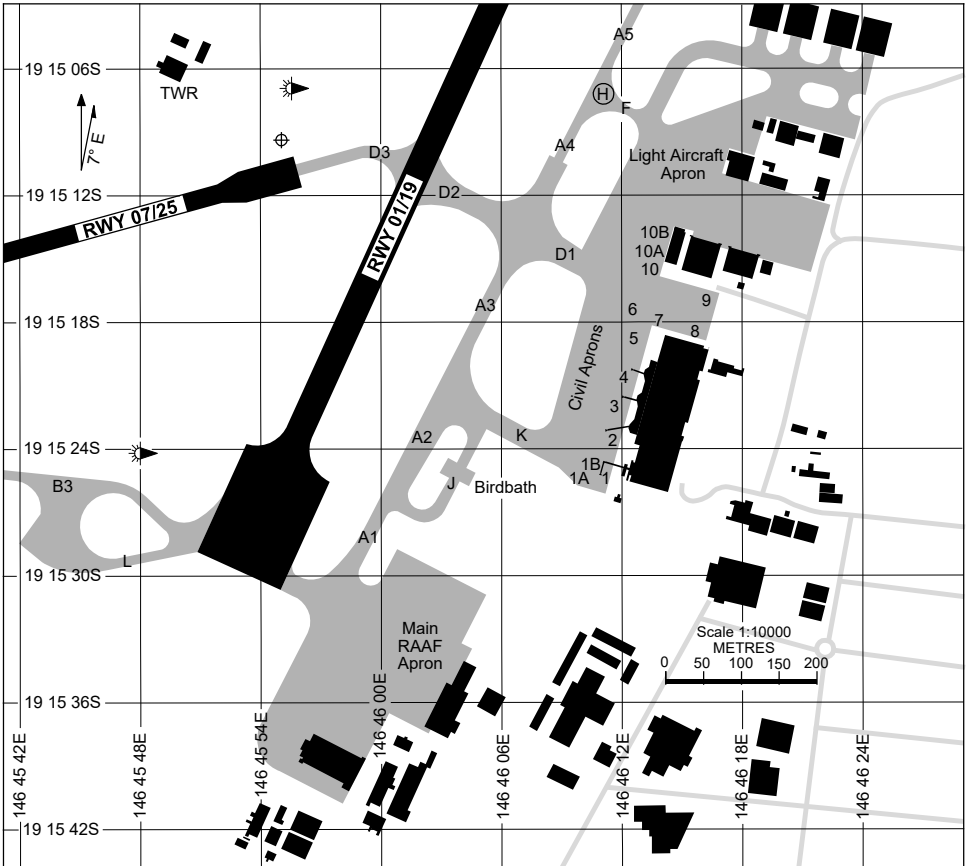
RWY	AERODROME LIGHTING						
		TAXIWAY : GREEN CENTRELINE RL : AFRU+PAL 118.3 , SDBY (15 SEC, OR 1 SEC DURING LOW VIS PROCS) , PTBL (RWY 01/19 30 MIN PN. RWY 07/25 EMERG ONLY).					
01 ⁰¹⁷ 197 19	PAPI 3.0° 49FT MIRL SALS PAPI 3.3° 49FT MIRL						
07 ⁰⁶⁷ 247 25	PTBL PTBL						

NOTES							

Changes: NOTES.

BTLAD02-173

7 NOV 2019



PARKING POSITION INFORMATION

STAND	CO-ORDINATES	ELEV (ft)	CAPACITY	HYDRANT FUEL	DOCKING SYSTEM
1	19 15 25.39S 146 46 11.16E	15	A332, A343	NIL	Safegate
1A	19 15 25.74S 146 46 09.85E	15	F100	NIL	
1B	19 15 24.83S 146 46 10.55E	15	F100	NIL	
2	19 15 23.60S 146 46 11.58E	15	B767	NIL	
3	19 15 21.95S 146 46 11.64E	15	B738	NIL	Safegate
4	19 15 20.61S 146 46 14.00E	15	B738	NIL	Safegate
5	19 15 18.78S 146 46 12.62E	15	B738	NIL	Safegate
6	19 15 17.33S 146 46 12.56E	15	B738	NIL	
7	19 15 17.93S 146 46 13.84E	15	DH8D	NIL	
8	19 15 18.61S 146 46 15.66E	15	SF34	NIL	
9	19 15 16.98S 146 46 16.21E	15	SF34	NIL	
10	19 15 15.36S 146 46 14.15E	15	B738	NIL	
10A	19 15 15.24S 146 46 14.25E	15	Q400	NIL	
10B	19 15 14.15S 146 46 14.60E	14	Q400	NIL	

NOTE
1. A332, A343 USE MARSHAL TO STAND 1

DME or GNSS ARRIVAL PROCEDURES TOWNSVILLE/TOWNSVILLE INTL, QLD (YBTL) Page 1

1 DEC 2022

ATIS 114.1 133.5 276	ACD 128.1	SMC 121.8 264.6	TWR 118.3	FIA (AH) BN CEN 120.55	CTAF+AFRU (AH) AFRU+PAL (AH) 118.3	AWIS (AH) 133.5	Bearings are Magnetic Elevations in FEET AMSL
-------------------------	--------------	--------------------	--------------	------------------------------	--	--------------------	--

**DME USING TL DME
REFERENCE WAYPOINT TL VOR**

SPEED
MAX IAS 250KT
BELOW 10,000FT

AD ELEV 18

SECTOR A

MISSED APPROACH:
TURN RIGHT,
TRACK 290°.
CLIMB TO 4700FT OR
AS DIRECTED BY ATC.
MAX IAS 200KT.

NM TO TL VOR	25	15	13	7	5	0								
CIRCLING MINIMA	A,B: 1350-2.4			C: 1350-4.0		D: 1350-5.0								
NM TO TL VOR	13	12	11	10	9	8	7	6	5	4	3	2.5		
ALT (3° APCH PATH)	4700	4380	4060	3740	3420	3110	2790	2470	2150	1830	1510	1350		

SECTOR B

MISSED APPROACH:
TURN LEFT OR RIGHT,
AS REQUIRED
TRACK 290°.
CLIMB TO 4700FT OR
AS DIRECTED BY ATC.

NM TO TL VOR	25	15	14	10	5	0							
CIRCLING MINIMA	A,B: 1410-2.4			C: 1410-4.0		D: 1410-5.0							
NM TO TL VOR	12.8	12	11	10	9	8	7	6	5	4	3	2	0.9
ALT (3° APCH PATH)	5200	4930	4610	4290	3970	3650	3330	3020	2700	2380	2060	1750	1410

SECTOR C

MISSED APPROACH:
TURN LEFT,
TRACK 290°.
CLIMB TO 4700FT OR
AS DIRECTED BY ATC.

NM TO TL VOR	25	16	13	6	0								
CIRCLING MINIMA	A,B: 2850-2.4			C: 2850-4.0		D: 2850-5.0							
NM TO TL VOR	10.4	10	9	8	7	6	5	4	3				
ALT (3° APCH PATH)	5200	5080	4770	4450	4130	3810	3490	3180	2850				

Changes: SEC B DIST/ALT TABLE.

BTLDG01-173

1 DEC 2022

ATIS 114.1 133.5 276	ACD 128.1	SMC 121.8 264.6	TWR 118.3	FIA (AH) BN CEN 120.55	CTAF+AFRU (AH) AFRU+PAL (AH) 118.3	AWIS (AH) 133.5	Bearings are Magnetic Elevations in FEET AMSL
-------------------------	--------------	--------------------	--------------	------------------------------	--	--------------------	--

**DME USING TL DME
REFERENCE WAYPOINT TL VOR**

SPEED
MAX IAS 250KT
BELOW 10,000FT

TL VOR/DME 114.1

TVL NDB 276

AD ELEV 18

* NO CIRCLING IN SECTOR EAST OF RWY 01 & RWY 19.

SECTOR D

MISSED APPROACH:
TURN LEFT,
TRACK 290°.
CLIMB TO 4700FT OR
AS DIRECTED BY ATC.

NM TO TL VOR	25	15	13	8	6	5	4	3	2	1	0.3			
CIRCLING MINIMA	A,B: 1350-2.4			C: 1350-4.0		D: 1350-5.0								
NM TO TL VOR	10	9	8	7	6	5	4	3	2	1	0.3			
ALT(3.24° APCH PATH)	4700	4350	4000	3660	3310	2970	2620	2280	1940	1590	1350			

LINSU TO TL

MISSED APPROACH:
TURN LEFT,
TRACK 290°.
CLIMB TO 4700FT OR
AS DIRECTED BY ATC.

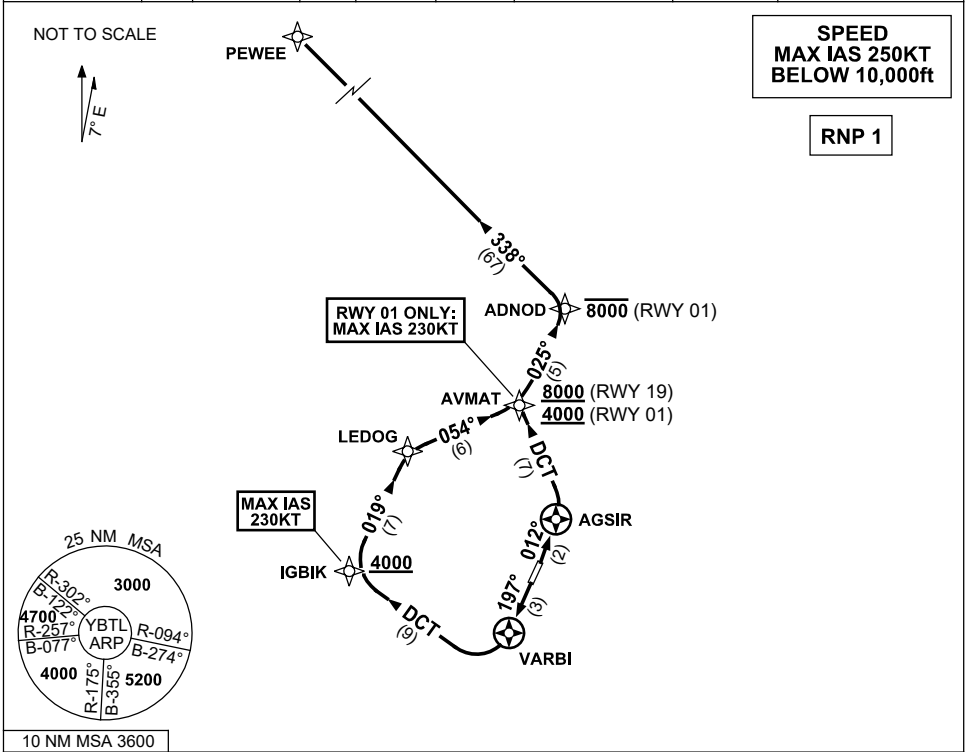
NM TO TL VOR	25	15	13	8	6	4								
CIRCLING MINIMA	A,B: 1800-2.4			C: 1800-4.0		D: 1800-5.0								
NM TO TL VOR	13	12	11	10	9	8	7	6	5	4	3	2.3		
ALT (3° APCH PATH)	5200	4880	4560	4240	3930	3610	3290	2970	2650	2340	2020	1800		

STANDARD INSTRUMENT DEPARTURES (SID)
RWY 01/19 PEWEE SIX (RNAV)

TOWNSVILLE/TOWNSVILLE INTL, QLD (YBTL)

24 MAR 2022

ATIS 114.1 133.5 276	ACD 128.1	SMC 121.8 264.6	TWR 118.3	APP/DEP 126.8	FIA (AH) BN CEN 120.55	CTAF+AFRU (AH) AFRU+PAL (AH) 118.3	AWIS (AH) 133.5	Bearings are Magnetic Elevations in FEET AMSL
-------------------------	--------------	--------------------	--------------	------------------	------------------------------	--	--------------------	--



PEWEE SIX DEPARTURE

RWY 01

- GRAD 5.4% to 1000ft then 3.3%
MAX IAS 230KT UNTIL PASSING AVMAT
- Track 012° to AGSIR
 - Turn LEFT, track DCT to AVMAT
Cross AVMAT AT or ABV 4000ft
(RQ GRAD to AVMAT: 7.0%)
 - Turn RIGHT, track 025° to ADNOD
Cross ADNOD AT or BLW 8000ft
 - Turn LEFT, track 338° to PEWEE

RWY 19

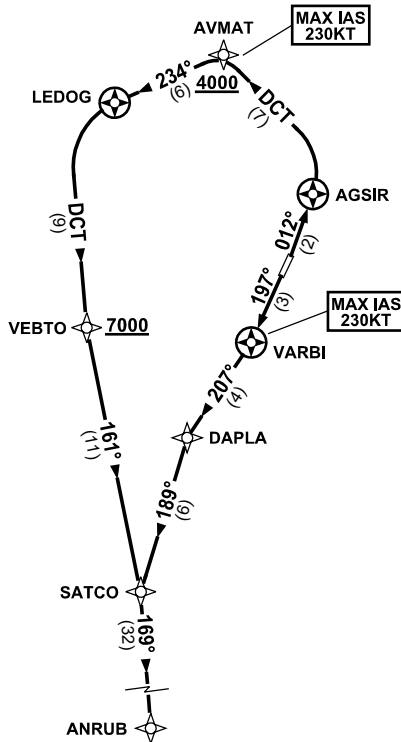
- GRAD 5.5% to 1300ft then 3.3%
MAX IAS 230KT UNTIL PASSING IGBIK
- Track 197° to VARBI
 - Turn RIGHT, track DCT to IGBIK
Cross IGBIK AT or ABV 4000ft
 - Turn RIGHT, track 019° to LEDOG
 - Turn RIGHT, track 054° to AVMAT
Cross AVMAT AT or ABV 8000ft
(RQ GRAD to AVMAT: 5.6%)
 - Turn LEFT, track 025° to ADNOD
 - Turn LEFT, track 338° to PEWEE

**STANDARD INSTRUMENT DEPARTURES (SID)
RWY 01/19 ANRUB ONE (RNAV)
TOWNSVILLE/TOWNSVILLE INTL, QLD (YBTL)**

24 MAR 2022

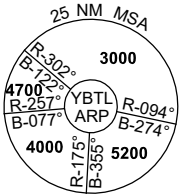
ATIS 114.1 133.5 276	ACD 128.1	SMC 121.8 264.6	TWR 118.3	APP/DEP 126.8	FIA (AH) BN CEN 120.55	CTAF+AFRU (AH) AFRU+PAL (AH) 118.3	AWIS (AH) 133.5	Bearings are Magnetic Elevations in FEET AMSL
-------------------------	--------------	--------------------	--------------	------------------	------------------------------	--	--------------------	--

NOT TO SCALE



**SPEED
MAX IAS 250KT
BELOW 10,000ft**

RNP 1



10 NM MSA 3600

ANRUB ONE DEPARTURE

RWY 01

- GRAD 5.4% to 1000ft then 3.3%
- MAX IAS 230KT UNTIL PASSING AVMAT**
- Track 012° to AGSIR
- Turn LEFT, track DCT to AVMAT
- Cross AVMAT AT or ABV 4000ft**
(RQ GRAD to AVMAT: 7.0%)
- Turn LEFT, track 234° to LEDOG
- Turn LEFT, track DCT to VEBTO
- Cross VEBTO AT or ABV 7000ft**
- Track 161° to SATCO
- Turn RIGHT, track 169° to ANRUB

RWY 19

- GRAD 5.5% to 1200ft then 3.3%
- MAX IAS 230KT UNTIL PASSING VARBI**
- Track 197° to VARBI
- Turn RIGHT, track 207° to DAPLA
- Turn LEFT, track 189° to SATCO
- Turn LEFT, track 169° to ANRUB

STANDARD INSTRUMENT DEPARTURES (SID)

RWY 01 CARMN ONE (RNAV)

TOWNSVILLE/TOWNSVILLE INTL, QLD (YBTL)

24 MAR 2022

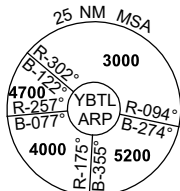
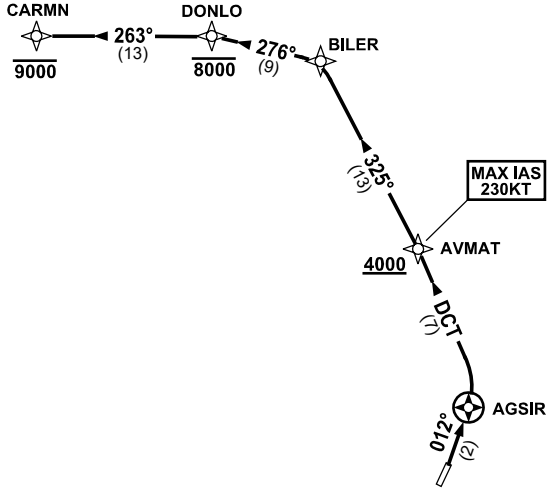
ATIS 114.1 133.5 276	ACD 128.1	SMC 121.8 264.6	TWR 118.3	APP/DEP 126.8	FIA (AH) BN CEN 120.55	CTAF+AFRU (AH) AFRU+PAL (AH) 118.3	AWIS (AH) 133.5	Bearings are Magnetic Elevations in FEET AMSL
-------------------------	--------------	--------------------	--------------	------------------	------------------------------	--	--------------------	--

NOT TO SCALE



**SPEED
MAX IAS 250KT
BELOW 10,000ft**

RNP 1



10 NM MSA 3600

CARMN ONE DEPARTURE

RWY 01

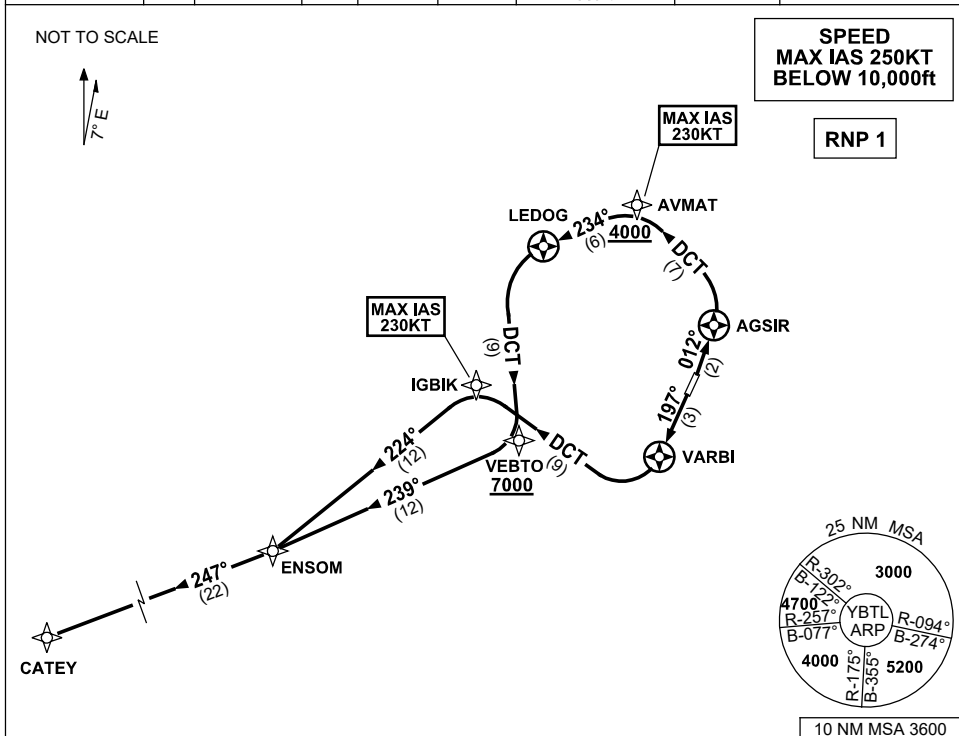
GRAD 5.4% to 1000ft then 3.3%
MAX IAS 230KT UNTIL PASSING AVMAT

- Track 012° to AGSIR
- Turn LEFT, track DCT to AVMAT
Cross AVMAT AT or ABV 4000ft
(RQ GRAD to AVMAT: 7.0%)
- Track 325° to BILER
- Turn LEFT, track 276° to DONLO
Cross DONLO AT or BLW 8000ft
- Turn LEFT, track 263° to CARMN
Cross CARMN AT or BLW 9000ft

**STANDARD INSTRUMENT DEPARTURES (SID)
RWY 01/19 CATEY ONE (RNAV)
TOWNSVILLE/TOWNSVILLE INTL, QLD (YBTL)**

24 MAR 2022

ATIS 114.1 133.5 276	ACD 128.1	SMC 121.8 264.6	TWR 118.3	APP/DEP 126.8	FIA (AH) BN CEN 120.55	CTAF+AFRU (AH) AFRU+PAL (AH) 118.3	AWIS (AH) 133.5	Bearings are Magnetic Elevations in FEET AMSL
-------------------------	--------------	--------------------	--------------	------------------	------------------------------	--	--------------------	--



CATEY ONE DEPARTURE

RWY 01

GRAD 5.4% to 1000ft then 3.3%
MAX IAS 230KT UNTIL PASSING AVMAT

- Track 012° to AGSIR
- Turn LEFT, track DCT to AVMAT
Cross AVMAT AT or ABV 4000ft
(RQ GRAD TO AVMAT: 7.0%)
- Turn LEFT, track 234° to LEDOG
- Turn LEFT, track DCT to VEBTO
Cross VEBTO AT or ABV 7000ft
- Turn RIGHT, track 239° to ENSOM
- Turn RIGHT, track 247° to CATEY

RWY 19

GRAD 5.5% to 1300ft then 3.3%
MAX IAS 230KT UNTIL PASSING IGBIK

- Track 197° to VARBI
- Turn RIGHT, track DCT to IGBIK
- Turn LEFT, track 224° to ENSOM
- Turn RIGHT, track 247° to CATEY

**STANDARD INSTRUMENT DEPARTURES (SID)
RWY 19 IGBIK ONE (RNAV)
TOWNSVILLE/TOWNSVILLE INTL, QLD (YBTL)**

24 MAR 2022

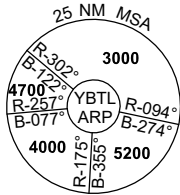
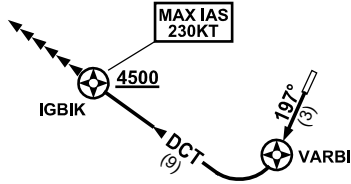
ATIS 114.1 133.5 276	ACD 128.1	SMC 121.8 264.6	TWR 118.3	APP/DEP 126.8	FIA (AH) BN CEN 120.55	CTAF+AFRU (AH) AFRU+PAL (AH) 118.3	AWIS (AH) 133.5	Bearings are Magnetic Elevations in FEET AMSL
-------------------------	--------------	--------------------	--------------	------------------	------------------------------	--	--------------------	--

NOT TO SCALE



**SPEED
MAX IAS 250KT
BELOW 10,000ft**

RNP 1



10 NM MSA 3600

**IGBIK ONE DEPARTURE
RWY 19**

- GRAD 5.5% to 1300ft then 3.3%
- MAX IAS 230KT UNTIL PASSING IGBIK**
- Track 197° to VARBI
- Turn RIGHT, track DCT to IGBIK
- Cross IGBIK AT or ABV 4500ft**
(RQ GRAD to IGBIK: 5.7%)
- Expect radar vectors to cleared route

COMMUNICATIONS FAILURE PROCEDURE

- On recognition of communication failure
- Squawk 7600
- Maintain last assigned vector for two minutes, and
- CLIMB IF NECESSARY TO MINIMUM SAFE ALTITUDE, to maintain terrain clearance, then
- Proceed in accordance with the latest ATC route clearance acknowledged.

Changes: Editorial.

BTLDP08-170

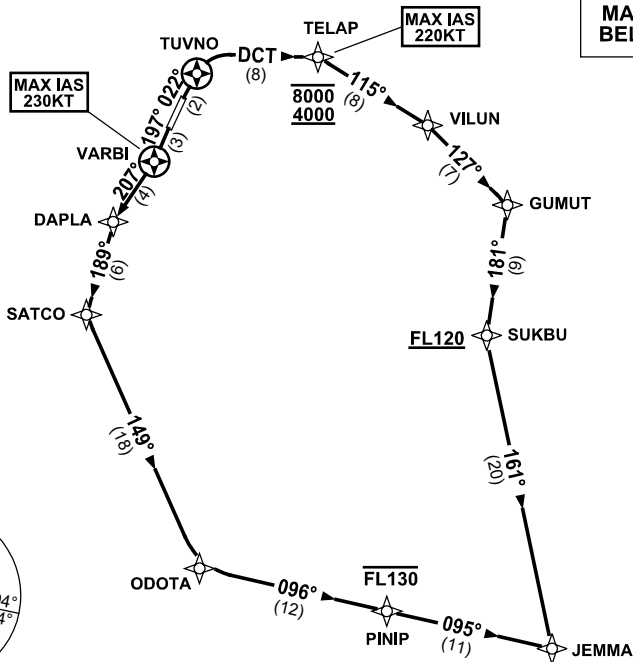
STANDARD INSTRUMENT DEPARTURES (SID)
RWY 01/19 JEMMA THREE (RNAV)

TOWNSVILLE/TOWNSVILLE INTL, QLD (YBTL)

30 NOV 2023

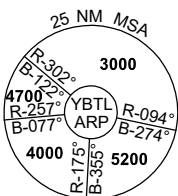
ATIS 114.1 133.5 276	ACD 128.1	SMC 121.8 264.6	TWR 118.3	APP/DEP 126.8	FIA (AH) BN CEN 120.55	CTAF+AFRU (AH) AFRU+PAL (AH) 118.3	AWIS (AH) 133.5	Bearings are Magnetic Elevations in FEET AMSL
-------------------------	--------------	--------------------	--------------	------------------	------------------------------	--	--------------------	--

NOT TO SCALE



SPEED
MAX IAS 250KT
BELOW 10,000ft

RNP 1



10 NM MSA 3600

JEMMA THREE DEPARTURE

RWY 01

- GRAD 4.9% to 1700ft then 3.3%
- MAX IAS 220KT UNTIL PASSING TELAP**
- Track 022° to TUVNO
- Turn RIGHT, track DCT to TELAP
- Cross TELAP BETWEEN 4000-8000ft**
(RQ GRAD to TELAP: 6.7%)
- Turn RIGHT, track 115° to VILUN
- Turn RIGHT, track 127° to GUMUT
- Turn RIGHT, track 181° to SUKBU
- Cross SUKBU AT or ABV FL120**
(RQ GRAD to SUKBU: 5.6% FM TELAP)
- Turn LEFT, track 161° to JEMMA

RWY 19

- GRAD 5.5% to 1200ft then 3.3%
- MAX IAS 230KT UNTIL PASSING VARBI**
- Track 197° to VARBI
- Turn RIGHT, track 207° to DAPLA
- Turn LEFT, track 189° to SATCO
- Turn LEFT, track 149° to ODOTA
- Turn LEFT, track 096° to PINIP
- Cross PINIP AT or BLW FL130**
- Track 095° to JEMMA

**STANDARD INSTRUMENT DEPARTURES (SID)
RWY 19 RURTO ONE (RNAV)
TOWNSVILLE/TOWNSVILLE INTL, QLD (YBTL)**

24 MAR 2022

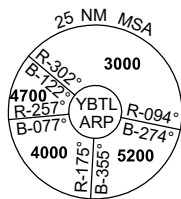
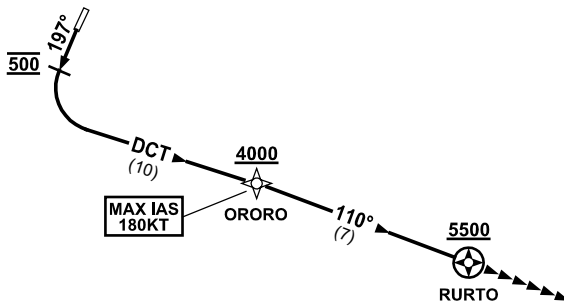
ATIS 114.1 133.5 276	ACD 128.1	SMC 121.8 264.6	TWR 118.3	APP/DEP 126.8	FIA (AH) BN CEN 120.55	CTAF+AFRU (AH) AFRU+PAL (AH) 118.3	AWIS (AH) 133.5	Bearings are Magnetic Elevations in FEET AMSL
-------------------------	--------------	--------------------	--------------	------------------	------------------------------	--	--------------------	--

NOT TO SCALE



**SPEED
MAX IAS 250KT
BELOW 10,000ft**

RNP 1



10 NM MSA 3600

RURTO ONE DEPARTURE

RWY 19

GRAD 8.0% to 1500ft then 3.3%
MAX IAS 180KT UNTIL PASSING ORORO

- Track 197°
- AT 500FT turn LEFT, track DCT to ORORO
Cross ORORO AT or ABV 4000ft
(RQ GRAD to ORORO: 5.4% FM 1500ft)
- Track 110° to RURTO
Cross RURTO AT or ABV 5500ft
(RQ GRAD to RURTO: 3.8% FM ORORO)
- Expect radar vectors to cleared route

COMMUNICATIONS FAILURE PROCEDURE

On recognition of communication failure

- Squawk 7600
- Maintain last assigned vector for two minutes, and
- CLIMB IF NECESSARY TO MINIMUM SAFE ALTITUDE, to maintain terrain clearance, then
- Proceed in accordance with the latest ATC route clearance acknowledged.

STANDARD INSTRUMENT DEPARTURES (SID)
RWY 01/19 AKROM ONE (RNAV)
TOWNSVILLE/TOWNSVILLE INTL, QLD (YBTL)

30 NOV 2023

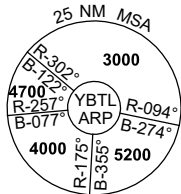
ATIS 114.1 133.5 276	ACD 128.1	SMC 121.8 264.6	TWR 118.3	APP/DEP 126.8	FIA (AH) BN CEN 120.55	CTAF+AFRU (AH) AFRU+PAL (AH) 118.3	AWIS (AH) 133.5	Bearings are Magnetic Elevations in FEET AMSL
-------------------------	--------------	--------------------	--------------	------------------	------------------------------	--	--------------------	--

NOT TO SCALE

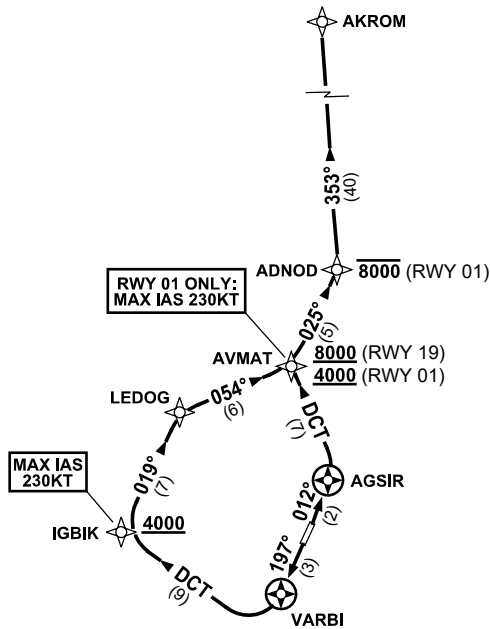


**SPEED
MAX IAS 250KT
BELOW 10,000ft**

RNP 1



10 NM MSA 3600



AKROM ONE DEPARTURE

RWY 01

- GRAD 5.4% to 1000ft then 3.3%
- MAX IAS 230KT UNTIL PASSING AVMAT**
- Track 012° to AGSIR
- Turn LEFT, track DCT to AVMAT
- Cross** AVMAT AT or ABV 4000ft
(RQ GRAD to AVMAT: 7.0%)
- Turn RIGHT, track 025° to ADNOD
- Cross** ADNOD AT or BLW 8000ft
- Turn LEFT, track 353° to AKROM

RWY 19

- GRAD 5.5% to 1300ft then 3.3%
- MAX IAS 230KT UNTIL PASSING IGBIK**
- Track 197° to VARBI
- Turn RIGHT, track DCT to IGBIK
- Cross** IGBIK AT or ABV 4000ft
- Turn RIGHT, track 019° to LEDOG
- Turn RIGHT, track 054° to AVMAT
- Cross** AVMAT AT or ABV 8000ft
(RQ GRAD to AVMAT: 5.6%)
- Turn LEFT, track 025° to ADNOD
- Turn LEFT, track 353° to AKROM

**STANDARD INSTRUMENT DEPARTURES (SID)
RWY 01/19 WALTA TWO (RNAV)
TOWNSVILLE/TOWNSVILLE INTL, QLD (YBTL)**

30 NOV 2023

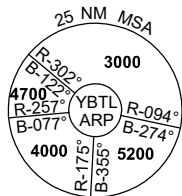
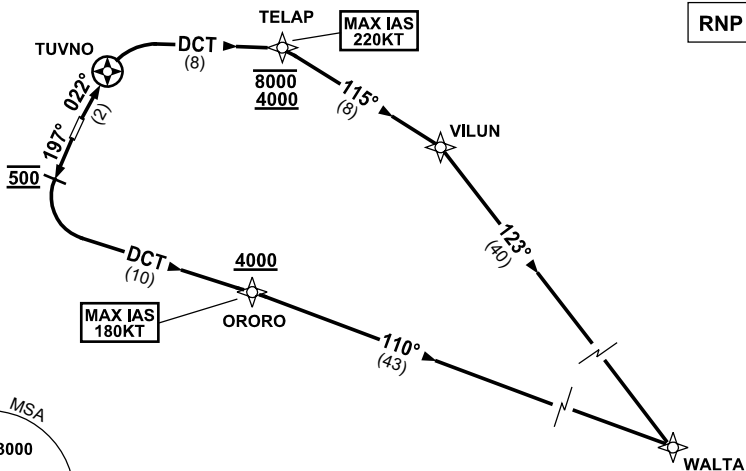
ATIS 114.1 133.5 276	ACD 128.1	SMC 121.8 264.6	TWR 118.3	APP/DEP 126.8	FIA (AH) BN CEN 120.55	CTAF+AFRU (AH) AFRU+PAL (AH) 118.3	AWIS (AH) 133.5	Bearings are Magnetic Elevations in FEET AMSL
-------------------------	--------------	--------------------	--------------	------------------	------------------------------	--	--------------------	--

NOT TO SCALE



**SPEED
MAX IAS 250KT
BELOW 10,000ft**

RNP 1



10 NM MSA 3600

**WALTA TWO DEPARTURE
RWY 01**

GRAD 4.9% to 1700ft then 3.3%
MAX IAS 220KT UNTIL PASSING TELAP

- Track 022° to TUVNO
- Turn RIGHT, track DCT to TELAP
Cross TELAP BETWEEN 4000-8000ft
(RQ GRAD to TELAP: 6.7%)
- Turn RIGHT, track 115° to VILUN
- Turn RIGHT, track 123° to WALTA

RWY 19

GRAD 8% to 1500ft then 3.3%
MAX IAS 180KT UNTIL PASSING ORORO

- Track 197°
- At 500ft turn LEFT, track DCT to ORORO
Cross ORORO AT or ABV 4000ft
(RQ GRAD to ORORO: 5.4% FM 1500ft)
- Track 110° to WALTA

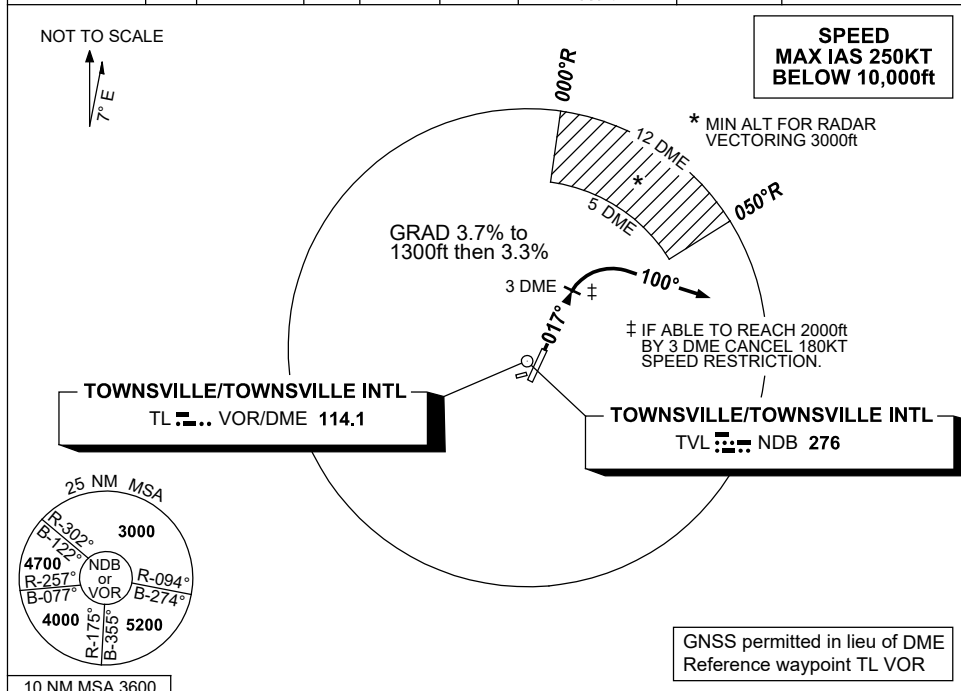
Changes: TELAP REPLACES MAGGY, VALIDITY NUMBER, Editorial.

BTLDP12-177

**STANDARD INSTRUMENT DEPARTURES (SID)
TOWNSVILLE EAST THREE DEPARTURE - RWY 01
TOWNSVILLE/TOWNSVILLE INTL, QLD (YBTL)**

24 MAR 2022

ATIS 114.1 133.5 276	ACD 128.1	SMC 121.8 264.6	TWR 118.3	APP/DEP 126.8	FIA (AH) BN CEN 120.55	CTAF+AFRU (AH) AFRU+PAL (AH) 118.3	AWIS (AH) 133.5	Bearings are Magnetic Elevations in FEET AMSL
-------------------------	--------------	--------------------	--------------	------------------	------------------------------	--	--------------------	--



TOWNSVILLE EAST THREE DEPARTURE

RWY 01

MAX IAS 180KT ‡
If able to reach 2000ft by 3 DME
cancel 180KT speed restriction

- GRAD 3.7% to 1300ft then 3.3%
- Track 017°
- **At 3 DME** turn RIGHT, track 100°
- Contact Approach/Departures for Radar Vectors

COMMUNICATIONS FAILURE PROCEDURE

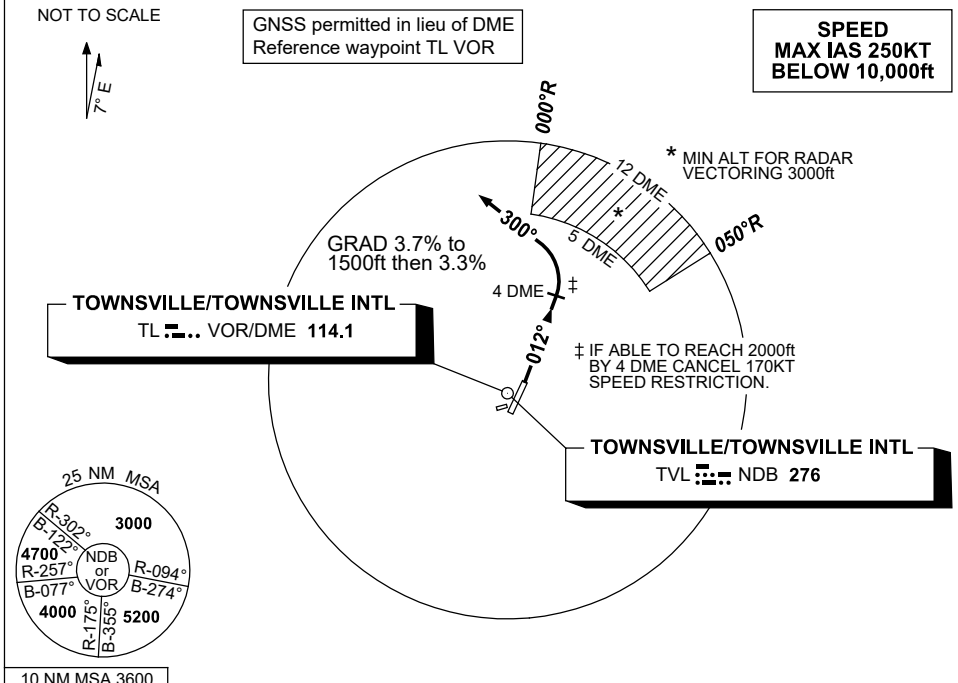
On recognition of communication failure

- Squawk 7600
- Maintain last assigned vector for two minutes, and
- CLIMB IF NECESSARY TO MINIMUM SAFE ALTITUDE, to maintain terrain clearance, then
- Proceed in accordance with the latest ATC route clearance acknowledged.

**STANDARD INSTRUMENT DEPARTURES (SID)
TOWNSVILLE NORTH FOUR DEPARTURE - RWY 01
TOWNSVILLE/TOWNSVILLE INTL, QLD (YBTL)**

24 MAR 2022

ATIS 114.1 133.5 276	ACD 128.1	SMC 121.8 264.6	TWR 118.3	APP/DEP 126.8	FIA (AH) BN CEN 120.55	CTAF+AFRU (AH) AFRU+PAL (AH) 118.3	AWIS (AH) 133.5	Bearings are Magnetic Elevations in FEET AMSL
-------------------------	--------------	--------------------	--------------	------------------	------------------------------	--	--------------------	--



TOWNSVILLE NORTH FOUR DEPARTURE

RWY 01

MAX IAS 170KT ‡

If able to reach 2000ft by 4 DME
cancel 170KT speed restriction

- GRAD 3.7% to 1500ft then 3.3%
- NOT BEFORE DER, turn LEFT, track 012°
- **At 4 DME** turn LEFT, track 300°
- Contact Approach/Departures for Radar Vectors

COMMUNICATIONS FAILURE PROCEDURE

On recognition of communication failure

- Squawk 7600
- Maintain last assigned vector for two minutes, and
- CLIMB IF NECESSARY TO MINIMUM SAFE ALTITUDE, to maintain terrain clearance, then
- Proceed in accordance with the latest ATC route clearance acknowledged.

FOR CASA APPROVED OPERATORS ONLY

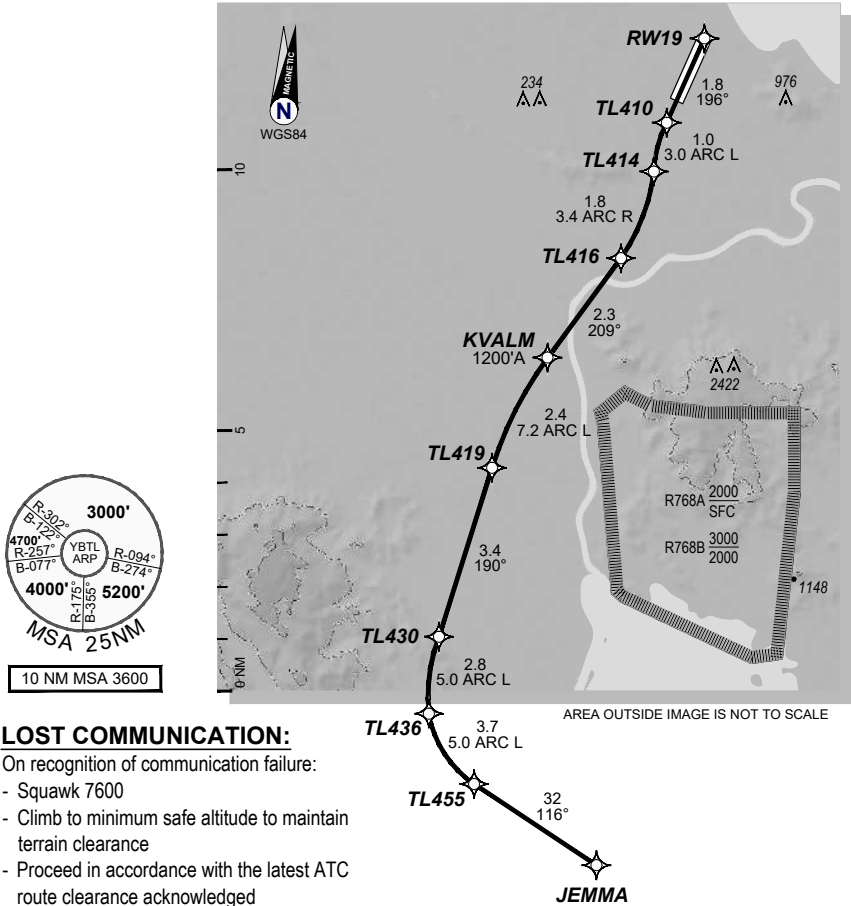
USE QNH

KVALM TWO DEPARTURE

30 NOV 2023

TOWNSVILLE/TOWNSVILLE INTL, QLD (YBTL)

Apt Elev 18'		Trans ALT 10000'							
ATIS	DEP	TWR	SMC	FIA (AH)	CTAF+AFRU (AH) AFRU+PAL (AH)	AWIS (AH)			
114.1 133.5 276	126.8	118.3	121.8 264.6	BN CEN 120.55	118.3	133.5			
KVALM TWO RNAV (RNP) DEPARTURE RNP 0.30 (KVALM2.JEMMA) RWY 19		Requires weather minima of 0' ceiling / 500 meters visibility.							
		TAKE-OFF: RWY 19: Fly the RNAV (RNP) track to JEMMA . Cross KVALM at or above 1200' .							



202307202142 COPYRIGHT 2023 GE DIGITAL. USA, PROPRIETARY AND CONFIDENTIAL

Changes: PROCEDURE UPNUMBERED, EDITORIAL

BTLDP16-177

DO NOT USE FOR NAVIGATION

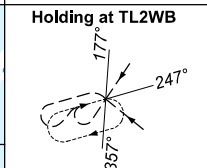
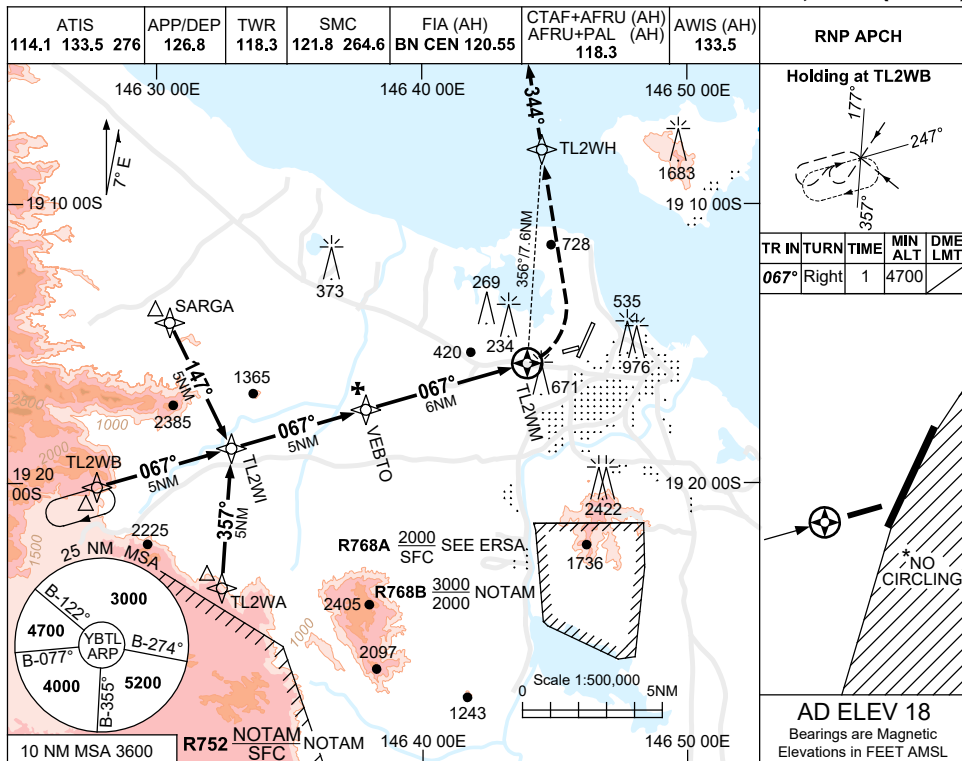
Prepared by GE Aviation



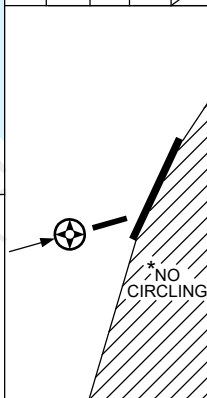
30 NOV 2023

USE QNH
TOWNSVILLE/TOWNSVILLE INTL, QLD (YBTL)

RNP RWY 07

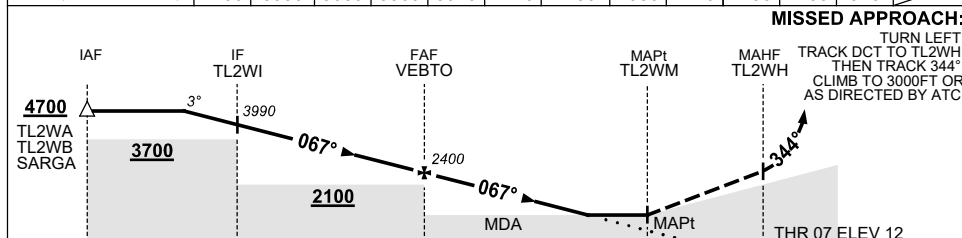


TR	IN	TURN	TIME	MIN ALT	DME LMT
067°	Right		1	4700	



AD ELEV 18
Bearings are Magnetic
Elevations in FEET AMSL

NM TO NEXT WPT	2.2	TL2WI	4	3	2	1	VEBTO	5	4	3	2	1.4	TL2WM
ALT (3° APCH PATH)	4700	3990	3680	3360	3040	2720	2400	2080	1770	1450	1130	940	



MISSED APPROACH:
TURN LEFT, TRACK DCT TO TL2WH, THEN TRACK 344°. CLIMB TO 3000FT OR AS DIRECTED BY ATC.

NOTES
1. MAX IAS: INITIAL : 210KT. MAP TURN: 180KT.
*2. NO CIRCLING IN SECTOR EAST OF RWY 01 & RWY 19.
3. WHEN R752 ACTIVE HOLDING AND APCH VIA TL2WA NOT AVBL.
4. COLOUR: SEE SPEC NOTICES.

CATEGORY	A	B	C	D
LNAV	940 (922-5.0)			NOT APPLICABLE
CIRCLING *	1090 (1072-2.4)		1350 (1332-4.0)	
ALTERNATE	(1572-4.4)		(1832-6.0)	

Changes: WPT NAMING CONVENTION, NEW LOGO.

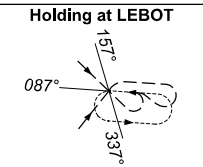
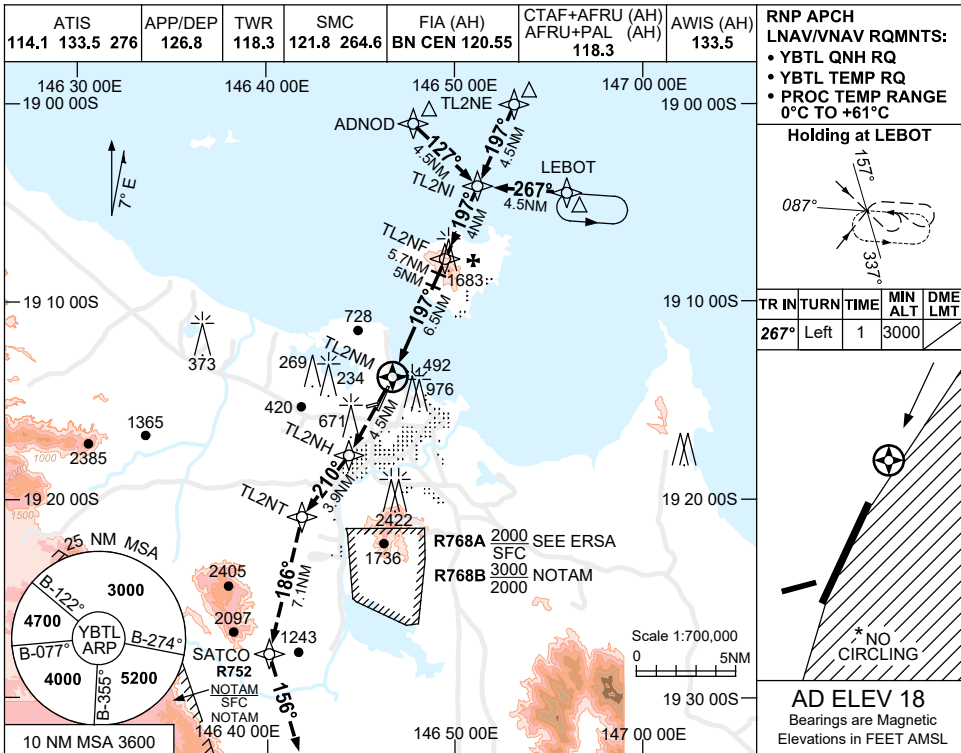
BTLGN01-177

USE QNH

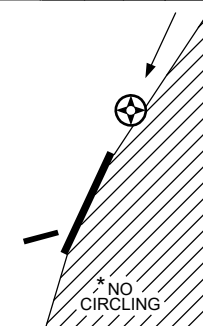
RNP Z RWY 19

30 NOV 2023

TOWNSVILLE/TOWNSVILLE INTL, QLD (YBTL)

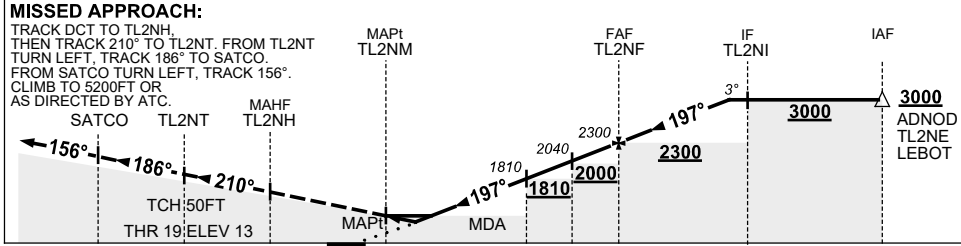


TR	IN	TURN	TIME	MIN ALT	DME LMT
267°	Left	1	3000		



AD ELEV 18
Bearings are Magnetic
Elevations in FEET AMSL

NM TO NEXT WPT	TL2NM	1.1	1.2	1.4	2	3	4	5	5.7	TL2NF	1	2	2.2
ALT (3.0° APCH PATH)		560	590	660	860	1180	1500	1810	2040	2300	2610	2930	3000



- NOTES**
- MAX IAS: INITIAL : 210KT. MISSED APCH TL2NH: 210KT. SATCO: 240KT.
 - NO CIRCLING IN SECTOR EAST OF RWY 01 & RWY 19.
 - COLOUR: SEE SPEC NOTICES.
 - HOLDING NOT CONTAINED IN CTA.
 - PAPI SLOPE DOES NOT COINCIDE WITH PROC SLOPE.

CATEGORY	A	B	C	D
LNAV/VNAV	550 (537-3.0)		590 (577-3.3)	660 (647-3.7)
LNAV	560 (542-3.1)			
CIRCLING*	1090 (1072-2.4)		1350 (1332-4.0)	1350 (1332-5.0)
ALTERNATE	(1572-4.4)		(1832-6.0)	(1832-7.0)

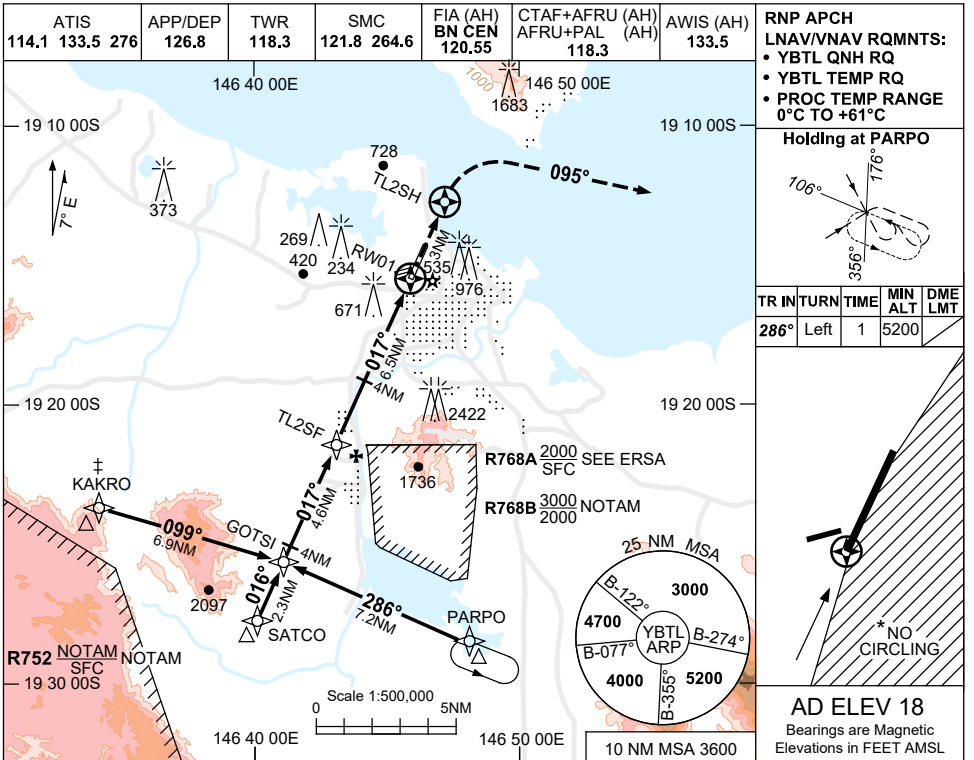
Changes: MISSED APCH, WPT NAMING CONVENTION, PROC TEMP RANGE, MINIMA, NEW LOGO. BTLGN02-177

USE QNH

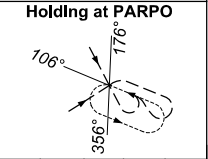
RNP Z RWY 01

30 NOV 2023

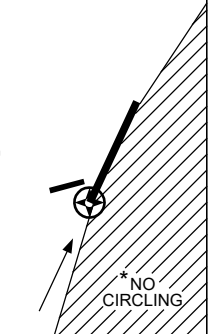
TOWNSVILLE/TOWNSVILLE INTL, QLD (YBTL)



- RNP APCH
LNAV/VNAV RQMNTS:
- YBTL QNH RQ
 - YBTL TEMP RQ
 - PROC TEMP RANGE 0°C TO +61°C

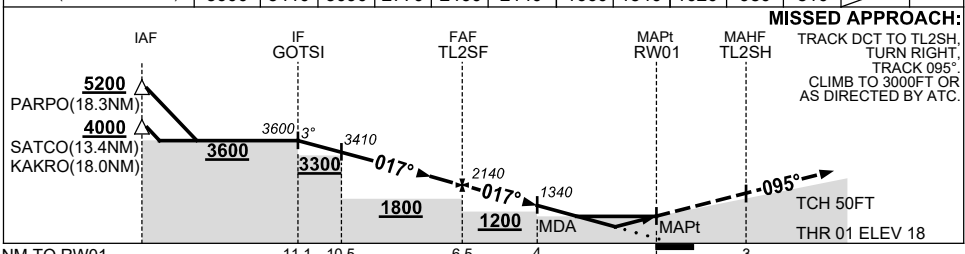


TR IN	TURN	TIME	MIN ALT	DME LMT
286°	Left	1	5200	



AD ELEV 18
Bearings are Magnetic
Elevations in FEET AMSL

NM TO NEXT WPT	GOTSI	4	3	2	1	TL2SF	5	4	3	2.9	2.3	RW01
ALT (3° APCH PATH)	3600	3410	3090	2770	2460	2140	1660	1340	1020	980	810	



MISSED APPROACH:
TRACK DCT to TL2SH.
TURN RIGHT,
TRACK 095°.
CLIMB TO 3000FT OR
AS DIRECTED BY ATC.

TCH 50FT
THR 01 ELEV 18

NM TO RW01: 11.1, 10.5, 6.5, 4, 0, 3

NOTES

- MAX IAS:
INITIAL : 200KT.
MAP TURN: 190KT.
- NO CIRCLING IN SECTOR EAST OF RWY 01 & RWY 19.
- WHEN R752 ACT ATC RADAR RQ AND APCH VIA KAKRO NOT AVBL.
- CLOUR: SEE SPEC NOTICES.

CATEGORY	A	B	C	D
LNAV/VNAV		810 (792-4.2)		
LNAV		980 (962-5.0)		
CIRCLING *	1090 (1072-2.4)		1350 (1332-4.0)	1350 (1332-5.0)
ALTERNATE	(1572-4.4)		(1832-6.0)	(1832-7.0)

Changes: WPT NAMING CONVENTION, KAKRO, PARPO, Editorial.

BTLGN05-177

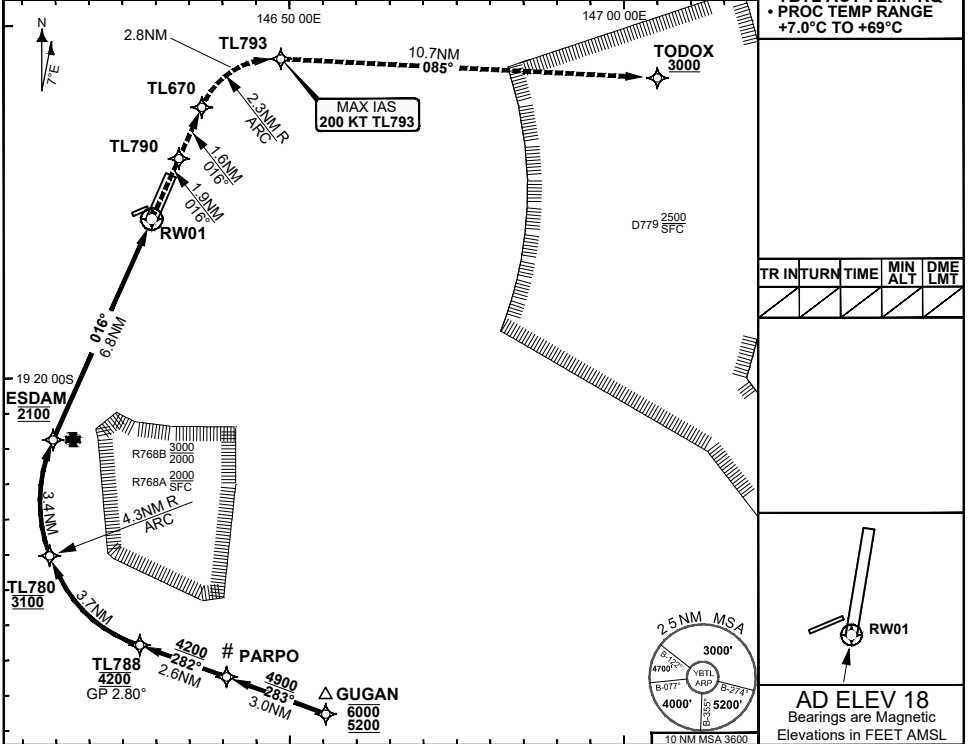
**FOR CASA APPROVED
OPERATORS ONLY
USE QNH**

RNP P RWY 01 (AR)

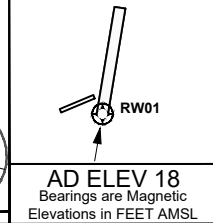
30 NOV 2023

TOWNSVILLE/TOWNSVILLE INTL, QLD (YBTL)

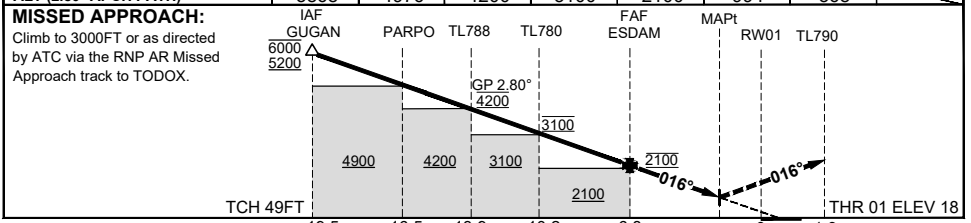
ATIS	APP	SMC	TWR	FIA (AH) BN CEN	CTAF+AFRU (AH) AFRU+PAL (AH)	AWIS	RNP P 01 THR ELEV 18	RNP AR APCH • RF RQ • YBTL ACT QNH RQ • YBTL ACT TEMP RQ • PROC TEMP RANGE +7.0°C TO +69°C
114.1 133.5 276	126.8	121.8 264.6	118.3	120.55	118.3	133.5		



TR	INTURN	TIME	MIN ALT	DME LMT



ALT (2.80° APCH PATH)	GUGAN	PARPO	TL788	TL780	ESDAM	3.1	1.0	RWY01
	5868	4976	4200	3100	2100	994	368	



MISSED APPROACH:
Climb to 3000FT or as directed by ATC via the RNP AR Missed Approach track to TODOX.

- NOTES**
- Lateral transition to MAP must not be initiated prior to DA/H PSN.
 - RNP 0.30 RQ FROM WPT GUGAN TO RWY01
 - RNP 0.50 RQ FROM WPT RWY01 TO TL790
 - RNP 0.10 Minimum MAP gradient 4.8% to 1600FT Required for Obstacle Clearance.
 - Latest Intercept Point (LIP)
 - APCH Path does not coincide with PAPI glide path 3.0°.

CATEGORY	A	B	C	D
RNP (0.30)			DA(H) 994 (976-5.0)	DA(H) 994 (976-5.0)
RNP (0.10)* (4.8% MAP)			DA(H) 368 (350-2.1) 1.7 HIALS	DA(H) 368 (350-2.1) 1.7 HIALS
CIRCLING	N/A		NOT AUTHORISED	NOT AUTHORISED
ALTERNATE				

202308030718 COPYRIGHT 2023 © NAVERUS, INC., USA., GE PROPRIETARY INFORMATION

Changes: EDITORIAL, KIRAN TO PARPO, WESTY TO TODOX.

BTLGN06-177

Prepared by GE Aviation - ICAO Doc 9905 Compliant

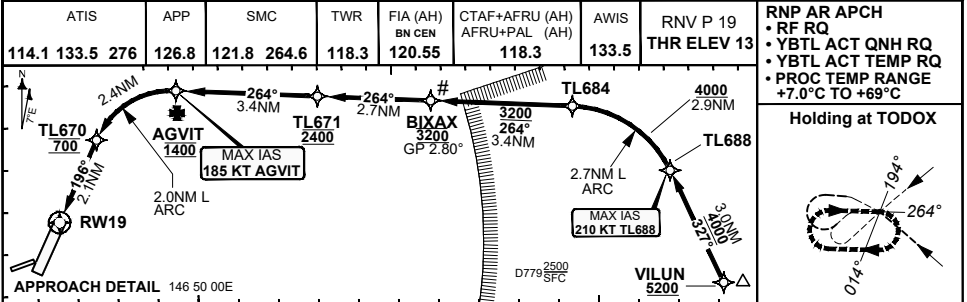


**FOR CASA APPROVED
OPERATORS ONLY
USE QNH**

RNP P RWY 19 (AR)

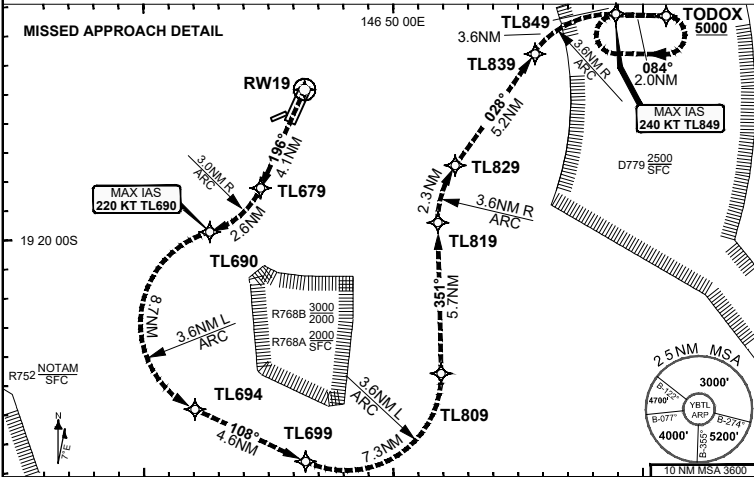
30 NOV 2023

TOWNSVILLE/TOWNSVILLE INTL, QLD (YBTL)



RNP AR APCH
 • RF RQ
 • YBTL ACT QNH RQ
 • YBTL ACT TEMP RQ
 • PROC TEMP RANGE
 +7.0°C TO +69°C

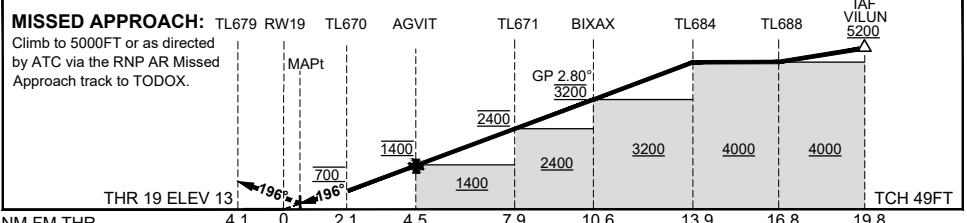
Holding at TODOX



TR	INTURN	TIME	MIN ALT	DME LMT
084°	Right	1'	5000	

AD ELEV 18
 Bearings are Magnetic
 Elevations in FEET AMSL

	RW19	TL670	AGVIT	TL671	BIXAX	TL684	TL688	VILUN
ALT (2.80° APCH PATH)		435	700	1400	2400	3200	4202	5070



MISSED APPROACH: TL679 RW19 TL670 AGVIT TL671 BIXAX TL684 TL688 IAF VILUN 5200

Climb to 5000FT or as directed by ATC via the RNP AR Missed Approach track to TODOX.

NOTES

1. APCH Path does not coincide with PAPI glide path 3.3°.
2. RNP 0.30 RQ FROM WPT VILUN TO RWY 19
- *3. Minimum MAP gradient 3.75% to 4300 FT Required for Obstacle Clearance.
- #4. Latest Intercept Point (LIP)

CATEGORY	A	B	C	D
RNP (0.30)* (3.75% MAP)			DA(H) 435 (422-2.5)	DA(H) 435 (422-2.5)
CIRCLING	N/A		NOT AUTHORISED	NOT AUTHORISED
ALTERNATE				

202308030717 COPYRIGHT 2023 © NAVERUS, INC., USA. GE PROPRIETARY INFORMATION

Changes: EDITORIAL, WESTY TO TODOX

BTLGN07-177

Prepared by GE Aviation - ICAO Doc 9905 Compliant

DO NOT USE FOR NAVIGATION

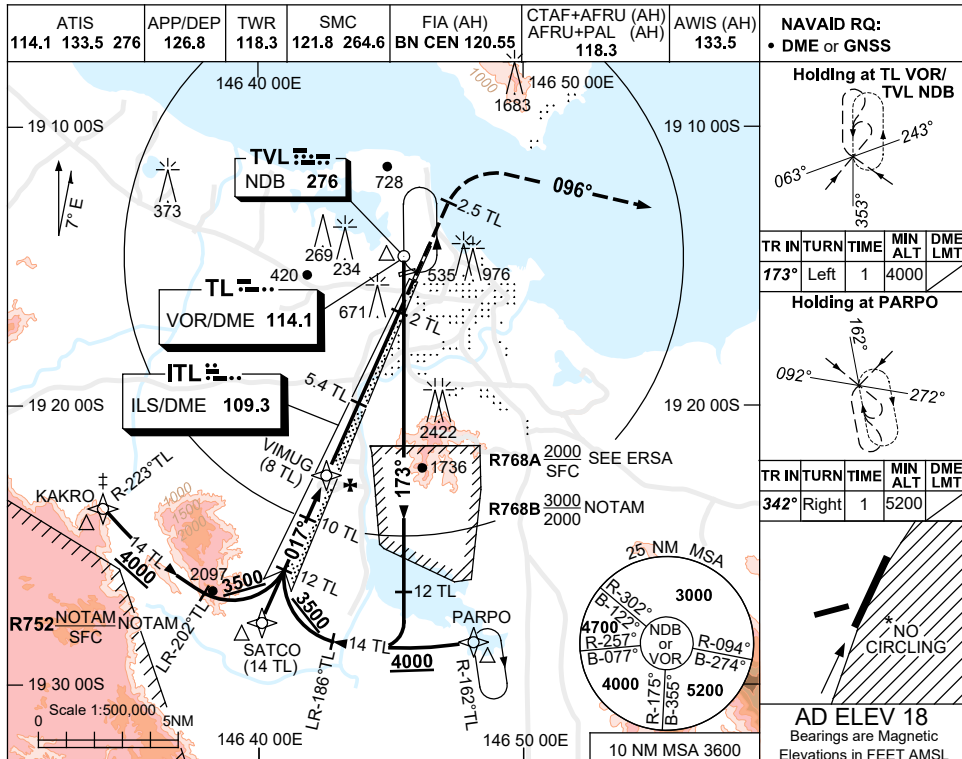


USE QNH

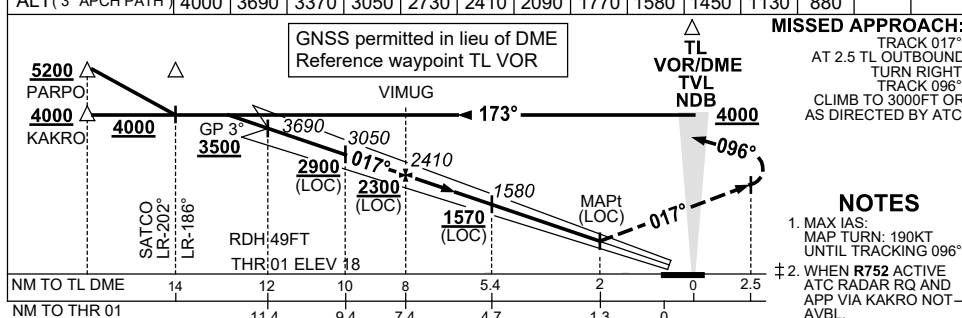
ILS-X or LOC-X RWY 01

30 NOV 2023

TOWNSVILLE/TOWNSVILLE INTL, QLD (YBTL)



NM TO TL DME	13	12	11	10	9	8	7	6	5.4	5	4	3.2		
ALT (3° APCH PATH)	4000	3690	3370	3050	2730	2410	2090	1770	1580	1450	1130	880		



CATEGORY	A	B	C	D
S-I ILS		370 (352)	1.6 (VIS 1.2 WITH ACTUAL QNH)	
S-I LOC		880 (862-4.6)		
CIRCLING *	1090 (1072-2.4)		1350 (1332-4.0)	1350 (1332-5.0)
ALTERNATE *	(1572-4.4)		(1832-6.0)	(1832-7.0)

Changes: KAKRO REPLACES FREDY, PARPO REPLACES KIRAN, Editorial.

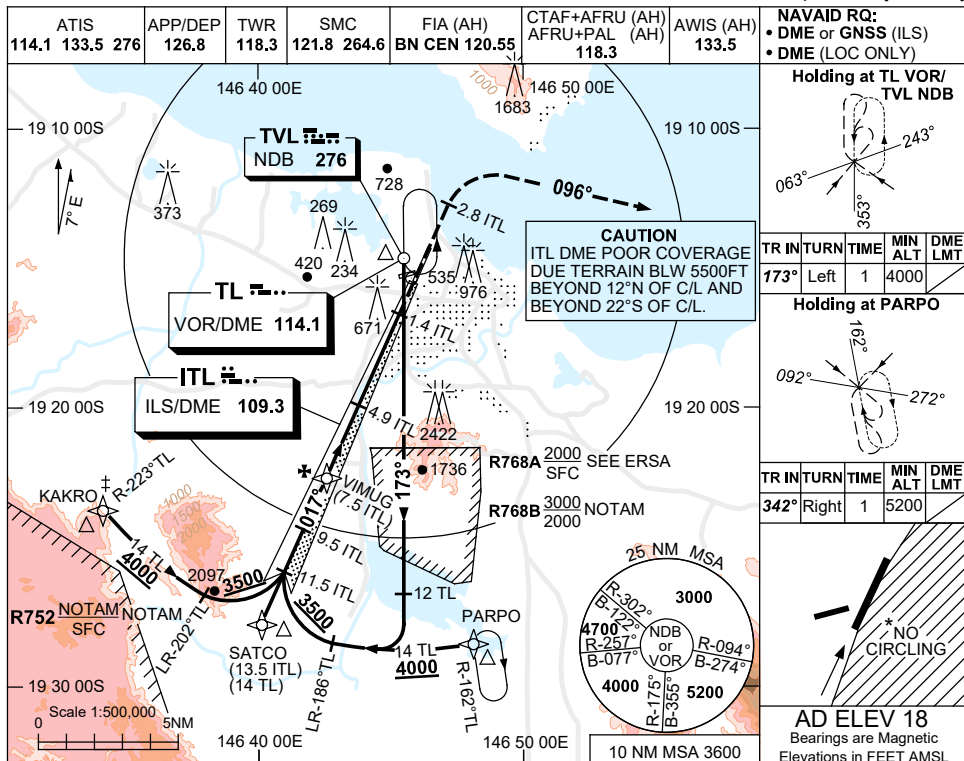
BTLII01-177

USE QNH

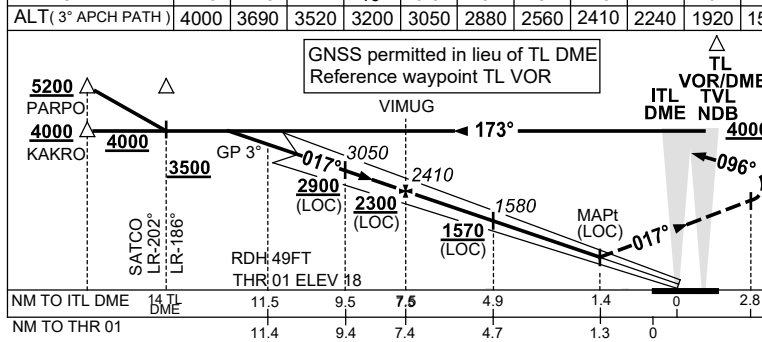
ILS-Z or LOC-Z RWY 01

30 NOV 2023

TOWNSVILLE/TOWNSVILLE INTL, QLD (YBTL)



NM TO ITL DME	12.5	11.5	11	10	9.5	9	8	7.5	7	6	4.9	4	3	2.7
ALT (3° APCH PATH)	4000	3690	3520	3200	3050	2880	2560	2410	2240	1920	1580	1290	970	880



MISSED APPROACH:
 TRACK 017°
 AT 2.8 ITL OUTBOUND
 TURN RIGHT,
 TRACK 096°
 CLIMB TO 3000FT OR
 AS DIRECTED BY ATC.

NOTES

- MAX IAS:
MAP TURN: 190KT
UNTIL TRACKING 096°
- WHEN R752 ACTIVE
ATC RADAR RQ AND
APP VIA KAKRO NOT
AVBL.
- NO CIRCLING IN
SECTOR EAST OF
RWY 01 & RWY 19.
- ACFT MAY BE RADAR
VECTORED TO IAF.
- SPECIAL ALTN MNM
900 /4 SKM. (NOT
APPLICABLE TO
LOC/DME).
- COLOUR: SEE
SPEC NOTICES.

CATEGORY	A	B	C	D
S-I ILS		370 (352)	1.6 (VIS 1.2 WITH ACTUAL QNH)	
S-I LOC		880 (862-4.6)		
CIRCLING *	1090 (1072-2.4)		1350 (1332-4.0)	1350 (1332-5.0)
ALTERNATE *	(1572-4.4)		(1832-6.0)	(1832-7.0)

Changes: KAKRO REPLACES FREDY, PARPO REPLACES KIRAN, Editorial.

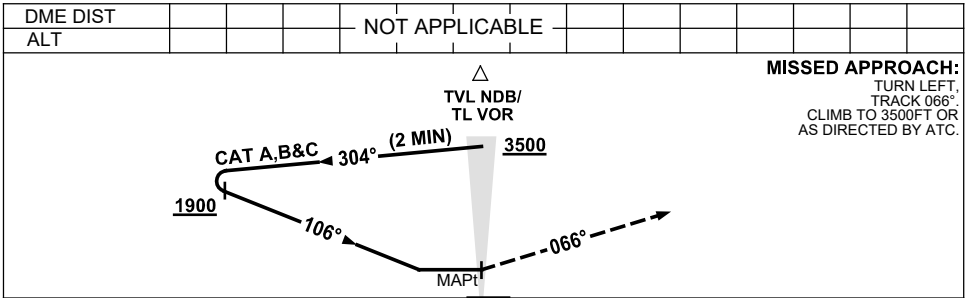
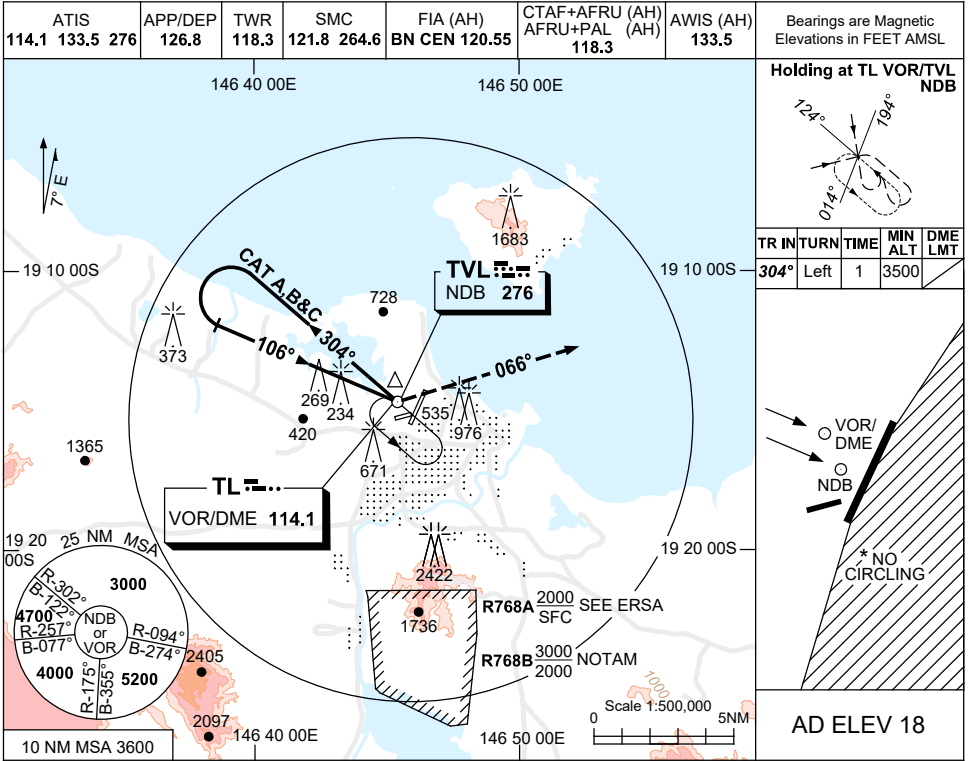
BT1102-177

USE QNH

NDB-A or VOR-A

8 SEP 2022

TOWNSVILLE/TOWNSVILLE INTL, QLD (YBTL)



NOTES

CATEGORY	A	B	C	D
				NOT APPLICABLE
CIRCLING *	1090 (1072-2.4)		1350 (1332-4.0)	
ALTERNATE	(1572-4.4)		(1832-6.0)	

1. MAX IAS:
HOLDING: 170KT.
INITIAL : 170KT.
- * 2. NO CIRCLING IN
SECTOR EAST OF
RWY 01 & RWY 19.
3. COLOUR: SEE
SPEC NOTICES.

Changes: 535FT OBST.

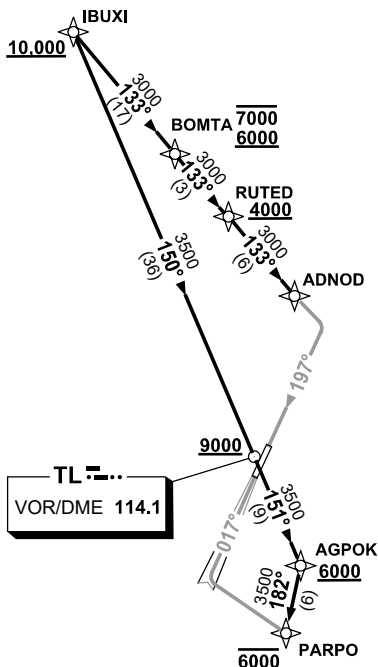
BTLN01-172

**STANDARD INSTRUMENT ARRIVAL (STAR)
IBUXI TWO ALPHA, ZULU ARRIVALS (RNAV)
TOWNSVILLE/TOWNSVILLE INTL, QLD (YBTL)**

30 NOV 2023

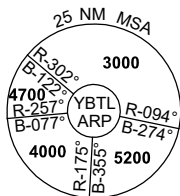
ATIS 114.1 133.5 276	ACD 128.1	SMC 121.8 264.6	TWR 118.3	APP/DEP 126.8	FIA (AH) BN CEN 120.55	CTAF+AFRU (AH) AFRU+PAL (AH) 118.3	AWIS (AH) 133.5	Bearings are Magnetic Elevations in FEET AMSL
-------------------------	--------------	--------------------	--------------	------------------	------------------------------	--	--------------------	--

NOT TO SCALE



**SPEED
MAX IAS 250KT
BELOW 10,000ft**

RNP 1



10 NM MSA 3600

IBUXI TWO ARRIVAL

RWY 01 ALPHA:

- **Cross** IBUXI AT or ABV 10,000ft
- From IBUXI track 150° to TL VOR
- **Cross** TL VOR AT or ABV 9000ft
- Track 151° to AGPOK
- **Cross** AGPOK AT or ABV 6000ft
- Turn RIGHT, track 182° to PARPO
- **Cross** PARPO AT or BLW 6000ft
- From PARPO track via RNP Z RWY 01 or ILS RWY 01

RWY 19 ZULU:

- **Cross** IBUXI AT or ABV 10,000ft
- From IBUXI track 133° to BOMTA
- **Cross** BOMTA BETWEEN 6000-7000ft
- Track 133° to RUTED
- **Cross** RUTED AT or ABV 4000ft
- Track 133° to ADNOD
- From ADNOD track via RNP Z RWY 19

**COMMUNICATIONS FAILURE: PROCEDURE IN IMC
IF ABLE CTC TL APP 07-4752-1207**

- Squawk 7600, comply with vertical navigation requirements, but not below MSA.
- Track via the latest STAR clearance to the nominated runway, then fly the most suitable approach in accordance with ERSA EMERG Section 1.5.

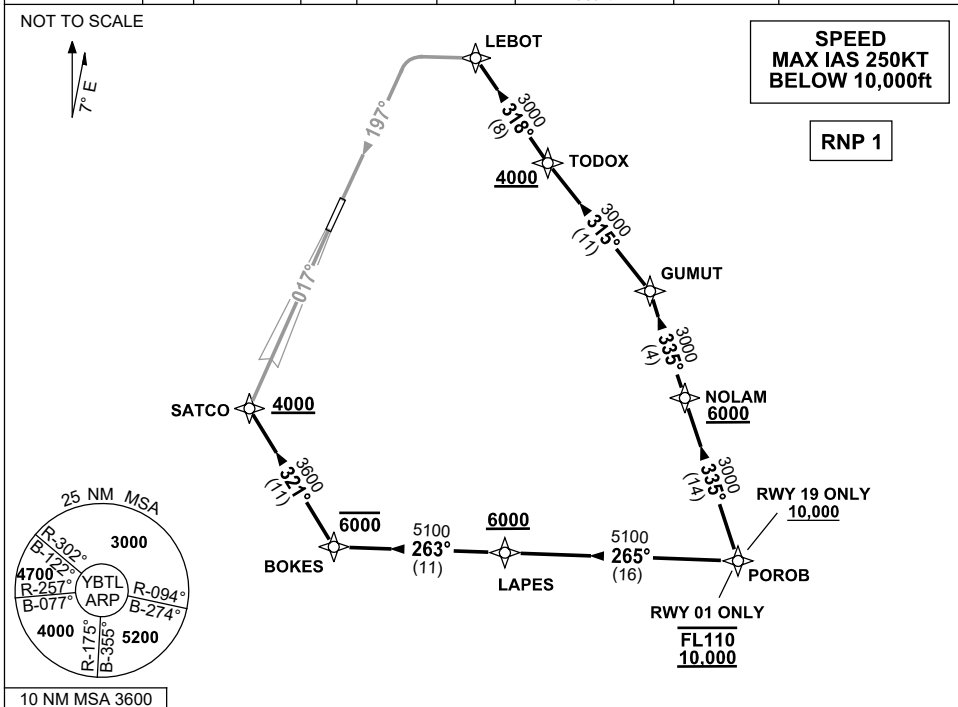
Changes: PARPO REPLACES KIRAN, VALIDITY NUMBER, Editorial.

BTLRS01-177

**STANDARD INSTRUMENT ARRIVAL (STAR)
POROB TWO ALPHA, ZULU ARRIVALS (RNAV)
TOWNSVILLE/TOWNSVILLE INTL, QLD (YBTL)**

30 NOV 2023

ATIS 114.1 133.5 276	ACD 128.1	SMC 121.8 264.6	TWR 118.3	APP/DEP 126.8	FIA (AH) BN CEN 120.55	CTAF+AFRU (AH) AFRU+PAL (AH) 118.3	AWIS (AH) 133.5	Bearings are Magnetic Elevations in FEET AMSL
-------------------------	--------------	--------------------	--------------	------------------	------------------------------	--	--------------------	--



POROB TWO ARRIVAL

RWY 01 ALPHA:

- **Cross** POROB BETWEEN 10,000ft-FL110
- From POROB track 265° to LAPES
Cross LAPES AT or ABV 6000ft
- Track 263° to BOKES
Cross BOKES AT or BLW 6000ft
- Turn RIGHT, track 321° to SATCO
Cross SATCO AT or ABV 4000ft
- From SATCO track via RNP Z RWY 01 or ILS RWY 01

RWY 19 ZULU:

- **Cross** POROB AT or ABV 10,000ft
- From POROB track 335° to NOLAM
Cross NOLAM AT or ABV 6000ft
- Track 335° to GUMUT
- Turn LEFT track 315° to TODOX
Cross TODOX AT or ABV 4000ft
- Track 318° to LEBOT
- From LEBOT track via RNP Z RWY 19

**COMMUNICATIONS FAILURE: PROCEDURE IN IMC
IF ABLE CTC TL APP 07-4752-1207**

- Squawk 7600, comply with vertical navigation requirements, but not below MSA.
- Track via the latest STAR clearance to the nominated runway, then fly the most suitable approach in accordance with ERSA EMERG Section 1.5.

Changes: TODOX REPLACES WESTY, VALIDITY NUMBER, Editorial.

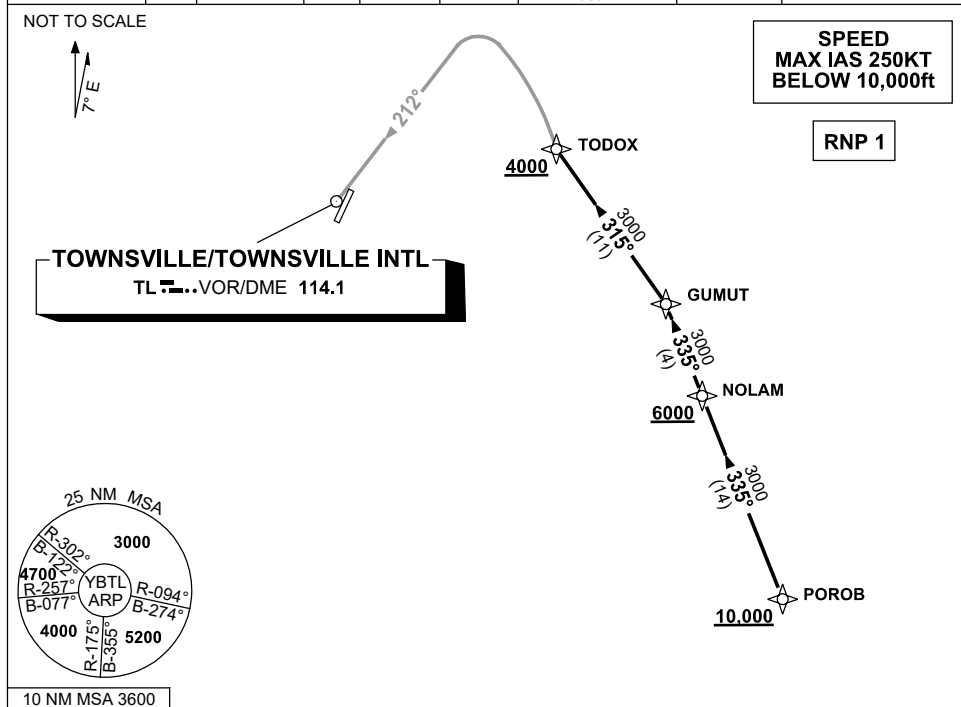
BTLSR02-177

STANDARD INSTRUMENT ARRIVAL (STAR)
POROB TWO BRAVO ARRIVAL (RNAV)

TOWNSVILLE/TOWNSVILLE INTL, QLD (YBTL)

30 NOV 2023

ATIS 114.1 133.5 276	ACD 128.1	SMC 121.8 264.6	TWR 118.3	APP/DEP 126.8	FIA (AH) BN CEN 120.55	CTAF+AFRU (AH) AFRU+PAL (AH) 118.3	AWIS (AH) 133.5	Bearings are Magnetic Elevations in FEET AMSL
-------------------------	--------------	--------------------	--------------	------------------	------------------------------	--	--------------------	--



POROB TWO ARRIVAL

RWY 19 BRAVO:

- **Cross** POROB AT or ABV 10,000ft
- From POROB track 335° to NOLAM
- **Cross** NOLAM AT or ABV 6000ft
- Track 335° to GUMUT
- Turn LEFT, track 315° to TODOX
- **Cross** TODOX AT or ABV 4000ft
- From TODOX track via VOR RWY 19

**COMMUNICATIONS FAILURE: PROCEDURE IN IMC
IF ABLE CTC TL APP 07-4752-1207**

- Squawk 7600, comply with vertical navigation requirements, but not below MSA.
- Track via the latest STAR clearance to the nominated runway, then fly the most suitable approach in accordance with ERSA EMERG Section 1.5.

Changes: TODOX REPLACES WESTY, VALIDITY NUMBER, Editorial.

BTLSR03-177

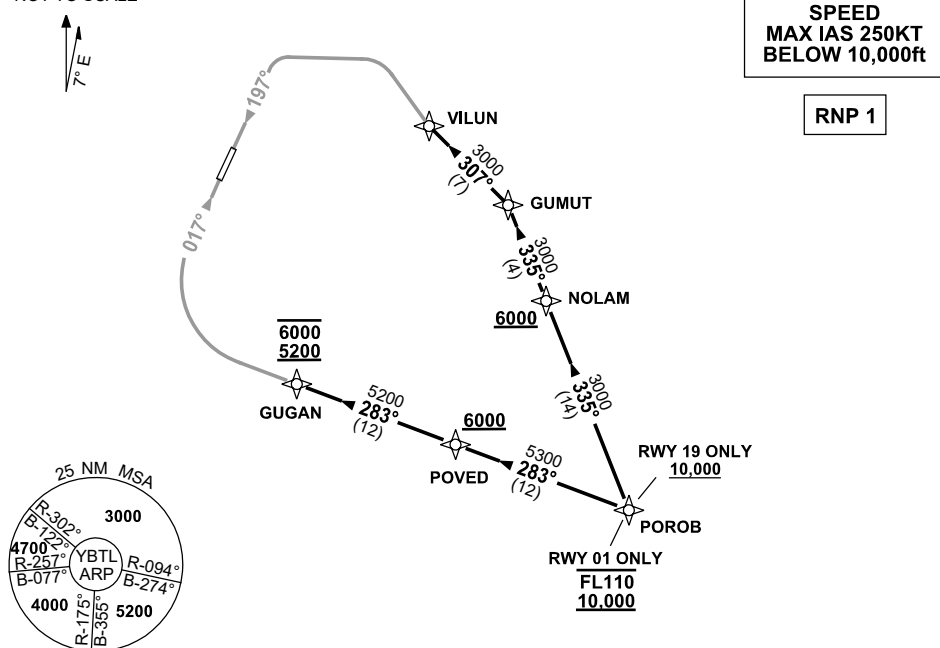
STANDARD INSTRUMENT ARRIVAL (STAR)
POROB TWO PAPA ARRIVAL (RNAV)

TOWNSVILLE/TOWNSVILLE INTL, QLD (YBTL)

21 MAR 2024

ATIS 114.1 133.5 276	ACD 128.1	SMC 121.8 264.6	TWR 118.3	APP/DEP 126.8	FIA (AH) BN CEN 120.55	CTAF+AFRU (AH) AFRU+PAL (AH) 118.3	AWIS (AH) 133.5	Bearings are Magnetic Elevations in FEET AMSL
-------------------------	--------------	--------------------	--------------	------------------	------------------------------	--	--------------------	--

NOT TO SCALE



10 NM MSA 3600

POROB TWO ARRIVAL

RWY 01 PAPA:

- **Cross** POROB BETWEEN 10,000ft-FL110
- From POROB track 283° to POVED
- **Cross** POVED AT or ABV 6000ft
- Track 283° to GUGAN
- **Cross** GUGAN BETWEEN 5200-6000ft
- From GUGAN track via RNP P RWY 01 (AR)

RWY 19 PAPA:

- **Cross** POROB AT or ABV 10,000ft
- From POROB track 335° to NOLAM
- **Cross** NOLAM AT or ABV 6000ft
- Track 335° to GUMUT
- Turn LEFT track 307° to VILUN
- From VILUN track via RNP P RWY 19 (AR)

**COMMUNICATIONS FAILURE: PROCEDURE IN IMC
IF ABLE CTC TL APP 07-4752-1207**

- Squawk 7600, comply with vertical navigation requirements, but not below MSA.
- Track via the latest STAR clearance to the nominated runway, then fly the most suitable approach in accordance with ERSA EMERG Section 1.5.

Changes: STAR VALIDITY INDICATOR, Editorial.

BTLSR04-178

STANDARD INSTRUMENT ARRIVAL (STAR)
IGIKI TWO ALPHA ARRIVAL (RNAV)

TOWNSVILLE/TOWNSVILLE INTL, QLD (YBTL)

30 NOV 2023

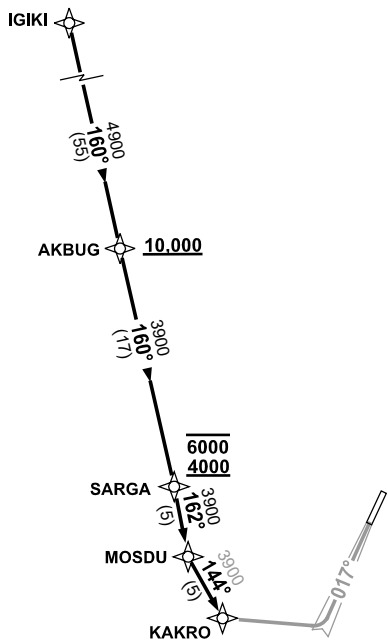
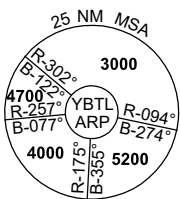
ATIS 114.1 133.5 276	ACD 128.1	SMC 121.8 264.6	TWR 118.3	APP/DEP 126.8	FIA (AH) BN CEN 120.55	CTAF+AFRU (AH) AFRU+PAL (AH) 118.3	AWIS (AH) 133.5	Bearings are Magnetic Elevations in FEET AMSL
-------------------------	--------------	--------------------	--------------	------------------	------------------------------	--	--------------------	--

NOT TO SCALE



**SPEED
MAX IAS 250KT
BELOW 10,000ft**

RNP 1



10 NM MSA 3600

IGIKI TWO ARRIVAL

RWY 01 ALPHA:

- From IGIKI track 160° to AKBUG
Cross AKBUG AT or ABV 10,000ft
- Track 160° to SARGA
Cross SARGA BETWEEN 4000-6000ft
- Turn RIGHT, track 162° to MOSDU
- Turn LEFT, track 144° to KAKRO
- From KAKRO track via RNP Z RWY 01 or ILS RWY 01

**COMMUNICATIONS FAILURE: PROCEDURE IN IMC
IF ABLE CTC TL APP 07-4752-1207**

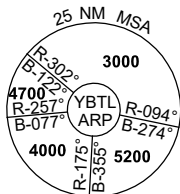
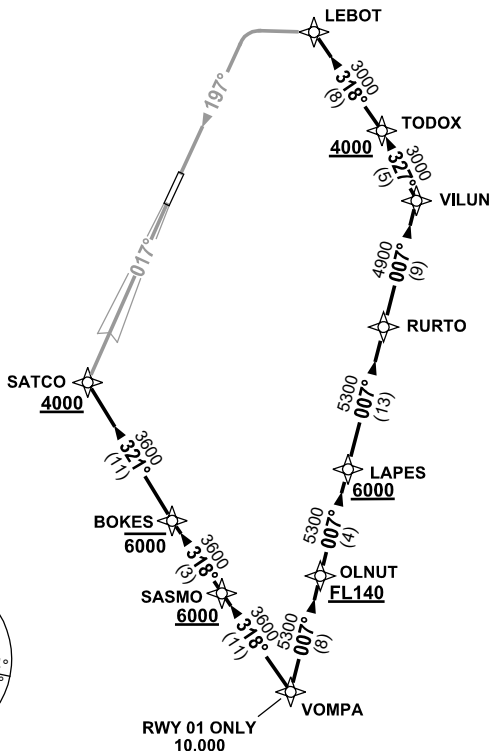
- Squawk 7600, comply with vertical navigation requirements, but not below MSA.
- Track via the latest STAR clearance to the nominated runway, then fly the most suitable approach in accordance with ERSA EMERG Section 1.5.

STANDARD INSTRUMENT ARRIVAL (STAR) VOMPA TWO ALPHA, ZULU ARRIVALS (RNAV) TOWNSVILLE/TOWNSVILLE INTL, QLD (YBTL)

30 NOV 2023

ATIS 114.1 133.5 276	ACD 128.1	SMC 121.8 264.6	TWR 118.3	APP/DEP 126.8	FIA (AH) BN CEN 120.55	CTAF+AFRU (AH) AFRU+PAL (AH) 118.3	AWIS (AH) 133.5	Bearings are Magnetic Elevations in FEET AMSL
-------------------------	--------------	--------------------	--------------	------------------	------------------------------	--	--------------------	--

NOT TO SCALE



10 NM MSA 3600

VOMPA TWO ARRIVAL

RWY 01 ALPHA:

- **Cross** VOMPA AT or ABV 10,000ft
- From VOMPA track 318° to SASMO
Cross SASMO AT or ABV 6000ft
- Track 318° to BOKES
Cross BOKES AT or BLW 6000ft
- Track 321° to SATCO
Cross SATCO AT or ABV 4000ft
- From SATCO track via RNP Z RWY 01 or ILS RWY 01

RWY 19 ZULU:

- From VOMPA track 007° to OLNUT
Cross OLNUT AT or ABV FL140
- Track 007° to LAPES
Cross LAPES AT or ABV 6000ft
- Track 007° to RURTO
- Track 007° to VILUN
- Turn LEFT, track 327° to TODOX
Cross TODOX AT or ABV 4000ft
- Turn LEFT, track 318° to LEBOT
- From LEBOT track via RNP Z RWY 19

COMMUNICATIONS FAILURE: PROCEDURE IN IMC IF ABLE CTC TL APP 07-4752-1207

- Squawk 7600, comply with vertical navigation requirements, but not below MSA.
- Track via the latest STAR clearance to the nominated runway, then fly the most suitable approach in accordance with ERSA EMERG Section 1.5.

Changes: TODOX REPLACES WESTY, VALIDITY NUMBER, Editorial.

BTLSR06-177

**STANDARD INSTRUMENT ARRIVAL (STAR)
VOMPA TWO BRAVO ARRIVAL (RNAV)
TOWNSVILLE/TOWNSVILLE INTL, QLD (YBTL)**

30 NOV 2023

ATIS 114.1 133.5 276	ACD 128.1	SMC 121.8 264.6	TWR 118.3	APP/DEP 126.8	FIA (AH) BN CEN 120.55	CTAF+AFRU (AH) AFRU+PAL (AH) 118.3	AWIS (AH) 133.5	Bearings are Magnetic Elevations in FEET AMSL
-------------------------	--------------	--------------------	--------------	------------------	------------------------------	--	--------------------	--

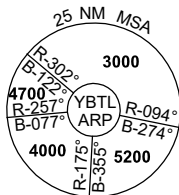
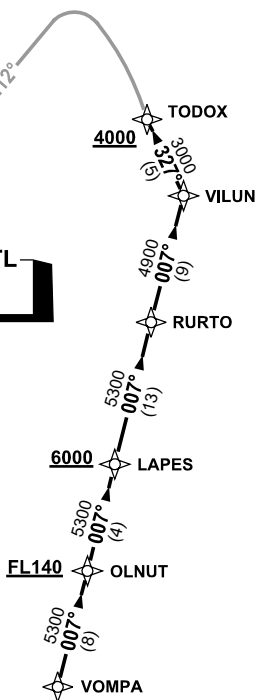
NOT TO SCALE



**SPEED
MAX IAS 250KT
BELOW 10,000ft**

RNP 1

TOWNSVILLE/TOWNSVILLE INTL
TL VOR/DME 114.1



10 NM MSA 3600

VOMPA TWO ARRIVAL

RWY 19 BRAVO:

- From VOMPA track 007° to OLNUT
Cross OLNUT AT or ABV FL140
- Track 007° to LAPES
Cross LAPES AT or ABV 6000ft
- Track 007° to RURTO
- Track 007° to VILUL
- Turn **LEFT**, track 327° to TODOX
Cross TODOX AT or ABV 4000ft
- From TODOX track via VOR RWY 19

**COMMUNICATIONS FAILURE: PROCEDURE IN IMC
IF ABLE CTC TL APP 07-4752-1207**

- Squawk 7600, comply with vertical navigation requirements, but not below MSA.
- Track via the latest STAR clearance to the nominated runway, then fly the most suitable approach in accordance with ERSA EMERG Section 1.5.

STANDARD INSTRUMENT ARRIVAL (STAR)
VOMPA TWO PAPA ARRIVAL (RNAV)

TOWNSVILLE/TOWNSVILLE INTL, QLD (YBTL)

21 MAR 2024

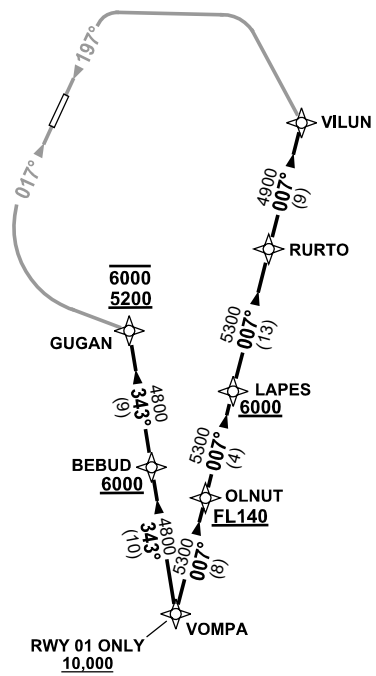
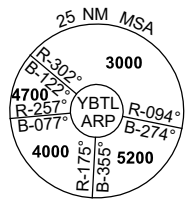
ATIS 114.1 133.5 276	ACD 128.1	SMC 121.8 264.6	TWR 118.3	APP/DEP 126.8	FIA (AH) BN CEN 120.55	CTAF+AFRU (AH) AFRU+PAL (AH) 118.3	AWIS (AH) 133.5	Bearings are Magnetic Elevations in FEET AMSL
-------------------------	--------------	--------------------	--------------	------------------	------------------------------	--	--------------------	--

NOT TO SCALE



**SPEED
MAX IAS 250KT
BELOW 10,000ft**

RNP 1



10 NM MSA 3600

VOMPA TWO ARRIVAL

RWY 01 PAPA:

- **Cross** VOMPA AT or ABV 10,000ft
- From VOMPA track 343° to BEBUD
- **Cross** BEBUD AT or ABV 6000ft
- Track 343° to GUGAN
- **Cross** GUGAN BETWEEN 5200-6000ft
- From GUGAN track via RNP P RWY 01 (AR)

RWY 19 PAPA:

- From VOMPA track 007° to OLNUT
- **Cross** OLNUT AT or ABV FL140
- Track 007° to LAPES
- **Cross** LAPES AT or ABV 6000ft
- Track 007° to RURTO
- Track 007° to VILUN
- From VILUN track via RNP P RWY19 (AR)

**COMMUNICATIONS FAILURE: PROCEDURE IN IMC
IF ABLE CTC TL APP 07-4752-1207**

- Squawk 7600, comply with vertical navigation requirements, but not below MSA.
- Track via the latest STAR clearance to the nominated runway, then fly the most suitable approach in accordance with ERSA EMERG Section 1.5.

Changes: STAR VALIDITY INDICATOR.

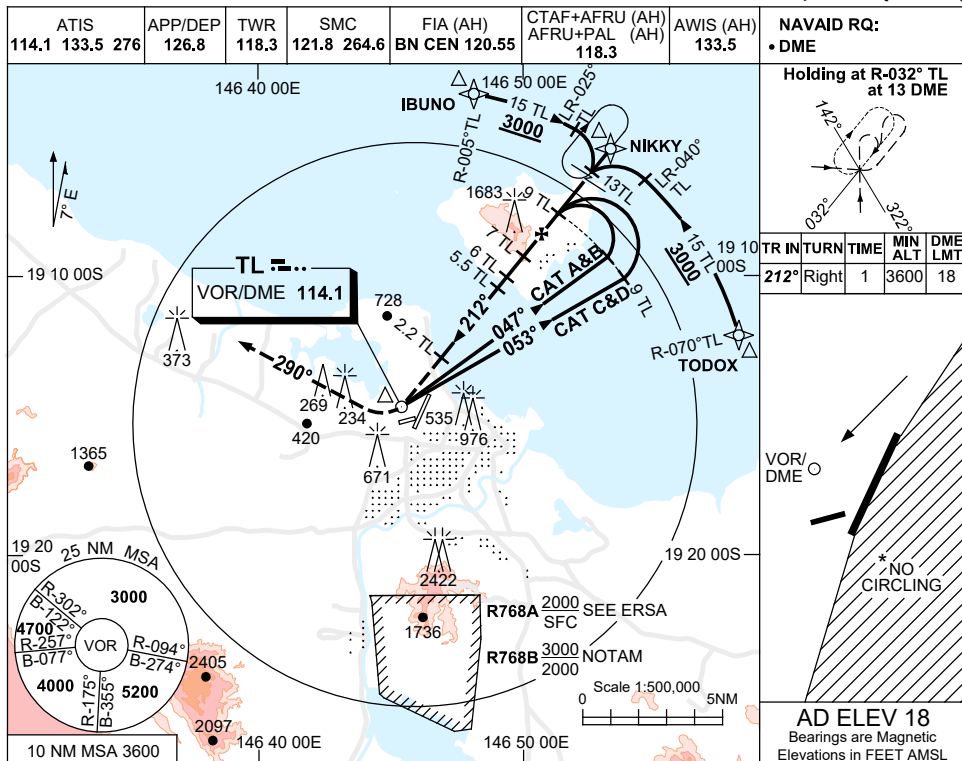
BTLSR08-178



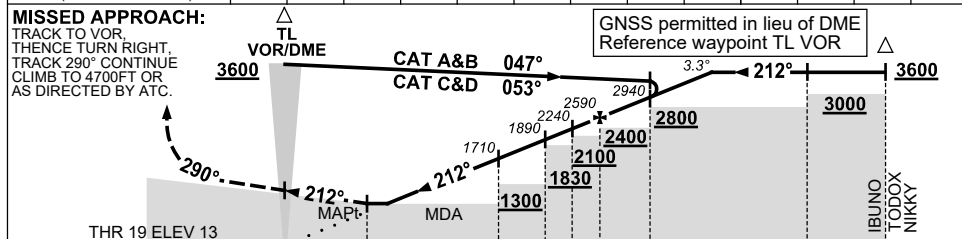
30 NOV 2023

USE QNH TOWNSVILLE/TOWNSVILLE INTL, QLD (YBTL)

VOR RWY 19



NM TO TL DME	2.4	3	4	5	5.5	6	7	8	9	10	10.9	
ALT (3.3° APCH PATH)	620	830	1190	1540	1710	1890	2240	2590	2940	3290	3600	



NM TO TL DME: 0, 2.2, 5.5, 6, 7, 8, 9, 13, 15

NOTES

1. MAX IAS:
INITIAL : 210KT.
MAP TURN: 240KT.
- * 2. NO CIRCLING IN SECTOR EAST OF RWY 01 & RWY 19.
- * 3. SPECIAL ALTN MNM 900/4.5KM.
4. COLOUR: SEE SPEC NOTICES.

CATEGORY	A	B	C	D
S-I VOR/DME	620 (602-3.1)			
CIRCLING *	1090 (1072-2.4)		1350 (1332-4.0)	1350 (1332-5.0)
ALTERNATE**	(1572-4.4)		(1832-6.0)	(1832-7.0)

Changes: IBUNO REPLACES NELLY, TODOX REPLACES WESTY, Editorial.

BTLV001-177