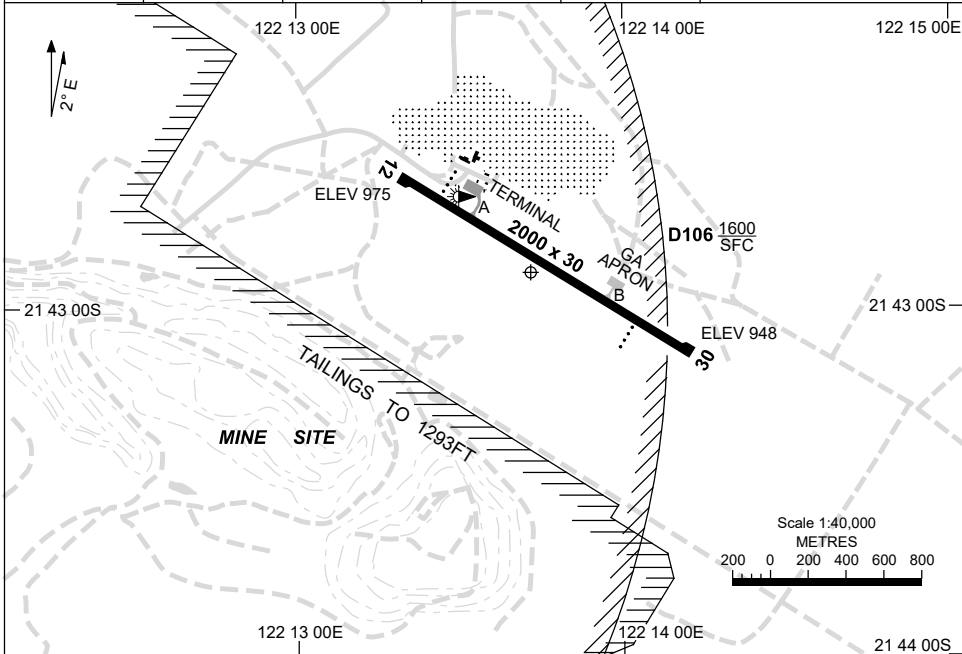


7 SEP 2023

AD ELEV 975
21 42 54S 122 13 42E

AERODROME CHART
TELFER, WA (YTEF)

AWIS 133.25	FIA ML CEN 134.5	CTAF+AFRU 126.65	UNICOM 126.65	PAL+AA 119.6	Bearings are Magnetic Elevations in FEET AMSL
----------------	---------------------	---------------------	------------------	-----------------	--



RWY	AERODROME LIGHTING	
	TAXIWAY : BLUE EDGE	RL : PAL+AA 119.6 , PTBL 60 MIN PN
12 ¹²⁰	PAPI 3.0° 44FT LIRL	
300 30	PAPI 3.0° 40FT LIRL	

NOTES

1. AWIS RQ 1 SEC TRANSMIT PULSE TO ACTIVATE.
2. PAL+AA RQ THREE - THREE SEC PULSES TO ACTIVATE.

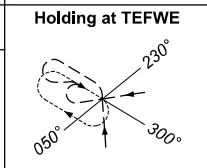
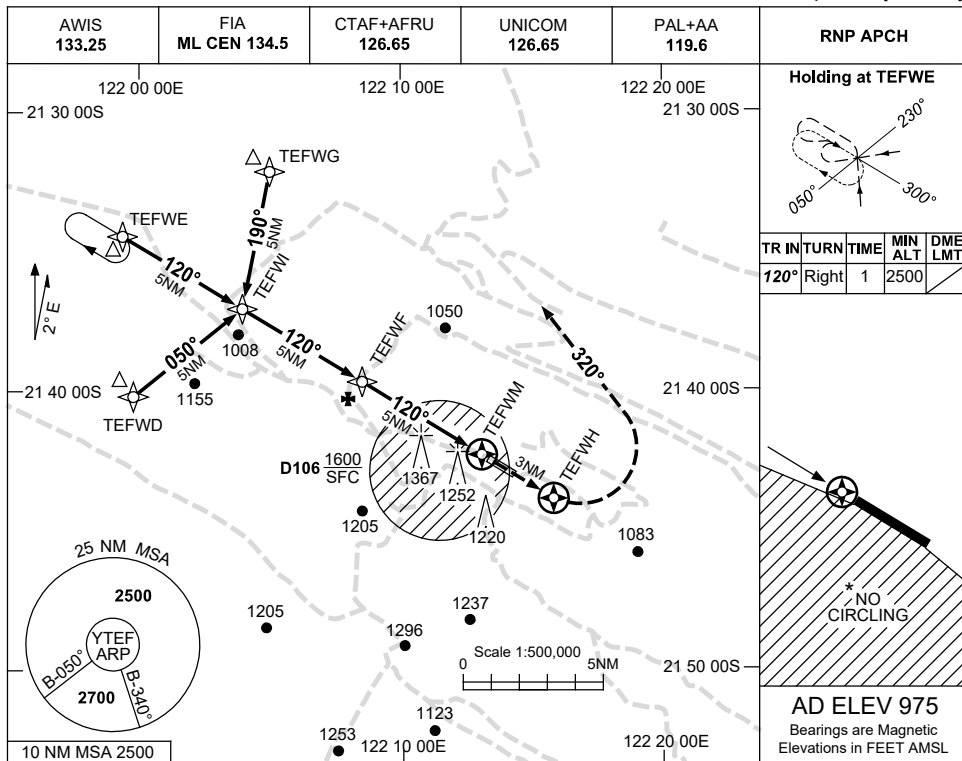
Changes: NOTES.

TEFAD01-176

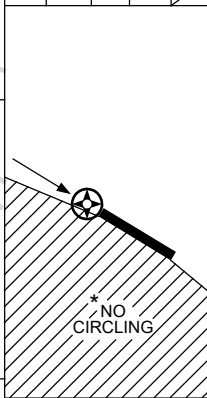
USE QNH

RNP RWY 12
TELFER, WA (YTEF)

30 NOV 2023

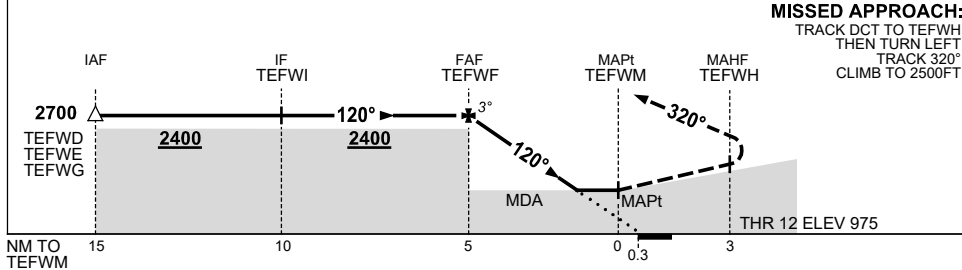


TR	IN	TURN	TIME	MIN ALT	DME LMT
120°	Right		1	2500	



AD ELEV 975
Bearings are Magnetic
Elevations in FEET AMSL

NM TO NEXT WPT	TEFWF	4	3	2	1.6	TEFWM				
ALT (3° APCH PATH)	2700	2380	2070	1750	1610					



MISSED APPROACH:
TRACK DCT TO TEFWH,
THEN TURN LEFT,
TRACK 320°,
CLIMB TO 2500FT.

CATEGORY	A	B	C	D
LNAV	1610 (635-3.6)			NOT APPLICABLE
CIRCLING*	1770 (795-2.4)		1870 (895-4.0)	
ALTERNATE	(1295-4.4)		(1395-6.0)	

- NOTES**
- MAX IAS:
INITIAL : 210KT.
 - CAUTION:** CHECK WITH UNICOM FOR BLASTING TIMES.
 - NO CIRCLING SW OF RWY 12/30.

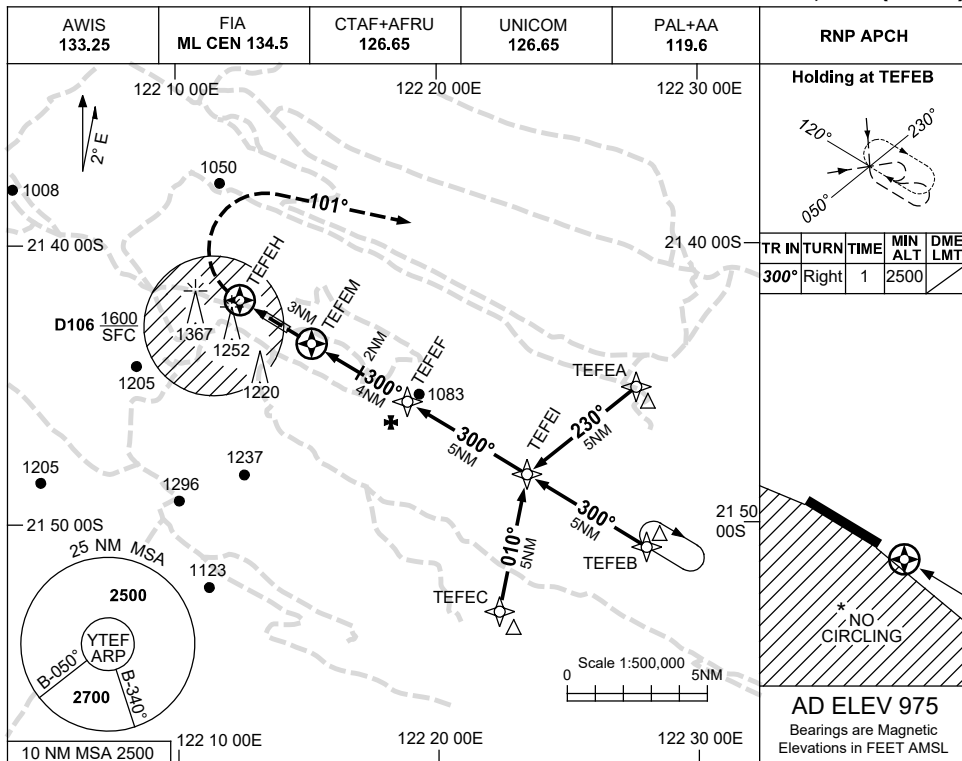
Changes: CHART TITLE, PBN SPECIFICATION BOX, Editorial.

TEFGN01-177

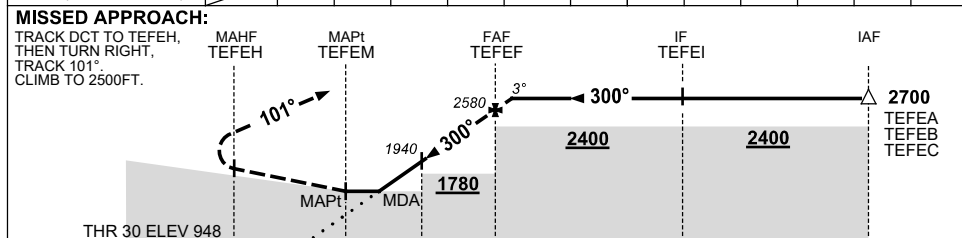
USE QNH

RNP RWY 30
TELFER, WA (YTEF)

30 NOV 2023



NM TO NEXT WPT	TEFEM	1	2	3	3.8	TEFEF	0.4			
ALT (3° APCH PATH)		1610	1940	2260	2500	2580	2700			



CATEGORY	A	B	C	D
LNAV	1610 (662-3.8)			NOT APPLICABLE
CIRCLING *	1770 (795-2.4)		1870 (895-4.0)	
ALTERNATE	(1295-4.4)		(1395-6.0)	

- NOTES**
- MAX IAS: INITIAL : 210KT.
 - CAUTION:** CHECK WITH UNICOM FOR BLASTING TIMES.
 - *3. NO CIRCLING SW OF RWY 12/30.

Changes: CHART TITLE, PBN SPECIFICATION BOX, Editorial.

TEFGN02-177